



# behringer AoIP-WSG AoIP Network Module User Guide

[Home](#) » [Behringer](#) » behringer AoIP-WSG AoIP Network Module User Guide 

behringer

## AoIP-WSG Quick Start Guide



AoIP Network Module with WAVES SoundGrid Technology and 64×64 Channels of Audio I/O

### Contents

- 1 Safety Instruction
- 2 Introduction
- 3 Installation
- 4 Inserting SoundGrid as EXTERNAL FX
- 5 Other important information
- 6 Documents / Resources
  - 6.1 References

### Safety Instruction

1. Please read and follow all instructions.
2. Keep the apparatus away from water, except for outdoor products.
3. Clean only with a dry cloth.
4. Do not block any ventilation openings. Install in accordance with the manufacturer's instructions.
5. Do not install near any heat sources such as radiators, heat registers, stoves or other apparatus (including amplifiers) that produce heat.
6. Use only attachments/accessories specified by the manufacturer.
7. Use only specified carts, stands, tripods, brackets, or tables. Use caution to prevent tip-over when moving the cart/ apparatus combination.



8. Avoid installing in confined spaces like bookcases.
9. Do not place near naked flame sources, such as lighted candles.
10. Operating temperature range 5° to 45°C (41° to 113°F).

#### **LEGAL DISCLAIMER**

Music Tribe accepts no liability for any loss which may be suffered by any person who relies either wholly or in part upon any description, photograph, or statement contained herein. Technical specifications, appearances and other information are subject to change without notice. All trademarks are the property of their respective owners. Midas, Klark Teknik, Lab Gruppen, Lake, Tannoy, Turbosound, TC Electronic, TC Helicon, Behringer, Bugera, Aston Microphones and Coolaudio are trademarks or registered trademarks of Music Tribe Global Brands Ltd. © Music Tribe Global Brands Ltd. 2024 All rights reserved.

#### **LIMITED WARRANTY**

For the applicable warranty terms and conditions and additional information regarding Music Tribe's Limited Warranty, please see complete details online at community. [musictribe.com/support](https://musictribe.com/support).

## **Introduction**

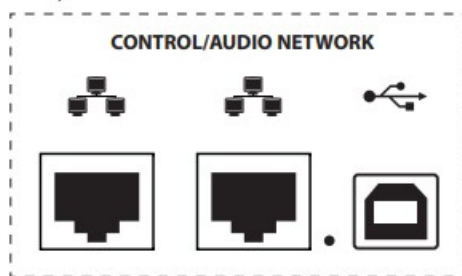
The WING SoundGrid module transmits up to 64 input and 64 output channels at 44.1 kHz or 48 kHz and 24 bits over either of the Ethernet ports on the rear panel in the CONTROL/AUDIO NETWORK section. Interconnected devices are also synchronized over the Ethernet connection.

## **Installation**

Waves plug-ins can be used on the WING by installing a SoundGrid module inside the console. Note that the installation procedure must only be performed by certified service centers. Check [behringer.com](https://behringer.com) for your closest service provider.

To activate the module, hold down UTILITY while turning on the console. The CONSOLE OPTIONS dialog will open automatically. Enter "MOD-WSG" and click on APPLY.

After the internal module has been installed, the two Ethernet ports on the rear panel act as a dual-redundant connection. Each port transmits 64 input and 64 output channels.



## Network Setup

### Single connection

Different network setups are possible, depending on the user's needs. The simplest setup can be seen below in Fig. 1, consisting of WING console connected directly to a computer with an Ethernet cable.



Fig. 1: Direct connection between WING and host computer

In this setup, the Waves SoundGrid software must allow the Digital Signal Processing (DSP) to be carried out by the host computer without the need for a Waves DSP server. Please refer to the documentation provided by Waves to compare SoundGrid software specifications.

### Multiple connections

Multiple SoundGrid-compatible devices like Waves servers and interfaces can be added by configuring a “star” network in which all devices are interconnected by a 1 Gigabit Ethernet switch (Fig. 2). Please refer to Waves’ documentation for a list of compatible switches.

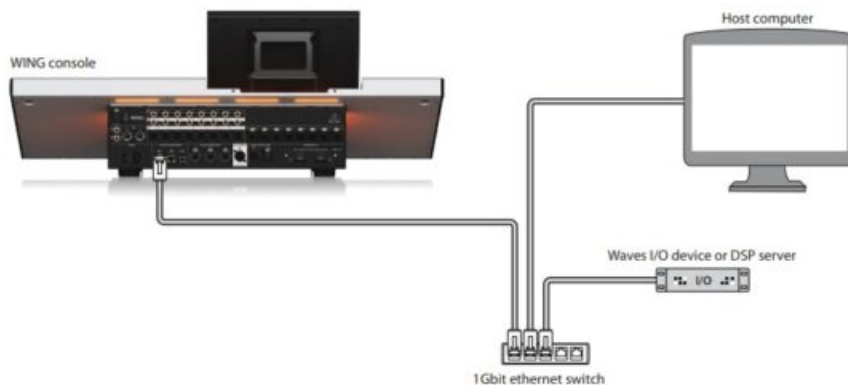


Fig. 2: WING console, host computer and additional I/O device forming a “star” network

## Direct routing of Sources to SoundGrid

After connecting the devices in one of the configurations described above, the WING console and all other devices in the network are shown in the SETUP tab in the SoundGrid software.

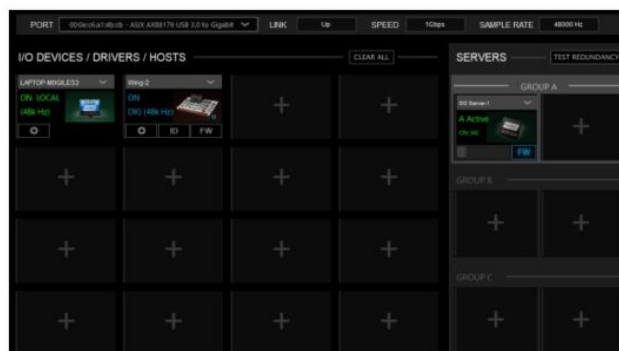


Fig. 3: SuperRack SoundGrid SETUP tab

The source and output groups “WSG” in the ROUTING screen of the WING console allow any source to be assigned to any of the 64 channels sent from the console, as well as assign any of the 64 return channels to any

channel on the WING. In the image below, local inputs 1 to 8 have been assigned to WSG outputs 1 to 8. Thus, the signal from the preamps 1 to 8 are sent to the SoundGrid network before channel processing.



Fig. 4: WSG source and output groups

To send a WING channel to the SoundGrid network after some or all the channel strip processing has been applied, a USER SIGNAL can be created on the ROUTING screen. The USER SIGNAL can be taken at the TAP point or POST fader. The signal can contain both left and right channels (L+R) or just one of them (L or R). Please refer to the WING console Quick Start Guide for more information on creating a USER SIGNAL.

In the SoundGrid software, the 64 channels coming from the console are routed to “racks” where the desired plug-ins are loaded. The output of each rack is then routed to one of the 64 channels sent back to the console.



Fig. 5: Rack routing SuperRack SoundGrid

Finally, choose the corresponding channel from the SOURCE GROUP WSG and assign it as source for the desired channel on the WING console.



Fig. 6: Assigning SOURCE GROUP WSG to a channel

## Inserting SoundGrid as EXTERNAL FX

Waves plug-ins can be assigned to an insert point on any channel of the WING using the EXTERNAL effects unit

within WING. When loaded on single channels, SoundGrid software processes the signal of that single channel. Alternatively, multiple channels can be sent to a single plug-in instance when the effect is loaded through an insert point on a bus.

In the example below, the EXTERNAL EFFECT has been loaded on Slot 1 of the 16 WING effect slots and then loaded on Insert Point 1 of Bus 1.



Fig. 7: External loaded as insert point on a bus

On the ROUTING screen, the SOURCE GROUP FX SENDS contains send channels for all 16 slots of the FX rack. EXTERNAL EFFECT is selected for Slot 1, FX SEND 1L and 1R must be sent through the desired channels to the SoundGrid software. In this example, FX SEND 1L and 1R are being sent via channels 9 and 10.



Fig. 8: FX SENDS

Channels 9 and 10 are routed through the SoundGrid software to the desired rack, where plug-ins are added. SoundGrid rack's output is sent back to the console through any available channel. In this example, the rack's output is sent back through channels 9 and 10, which are then selected as the EXTERNAL EFFECT RETURN signal (see Fig. 7).

## Other important information

### Important information

1. Register online. Please register your new Music Tribe equipment right after you purchase it by visiting [musictribe.com](https://musictribe.com). Registering your purchase using our simple online form helps us to process your repair claims more quickly and efficiently. Also, read the terms and conditions of our warranty, if applicable.
2. Malfunction. Should your Music Tribe Authorized Reseller not be located in your vicinity, you may contact the Music Tribe Authorized Fulfiller for your country listed under "Support" at [musictribe.com](https://musictribe.com). Should your country



not be listed, please check if your problem can be dealt with by our “Online Support” which may also be found under “Support” at [musictribe.com](https://musictribe.com). Alternatively, please submit an online warranty claim at [musictribe.com](https://musictribe.com) BEFORE returning the product.

**FEDERAL COMMUNICATIONS COMMISSION COMPLIANCE INFORMATION**

Behringer AoIP-WSG

Responsible Party Name:	Music Tribe Commercial NV Inc.
Address:	122 E. 42nd St.1, 8th Floor NY, NY 10168, United States
Email Address:	<a href="mailto:legal@musictribe.com">legal@musictribe.com</a>

**AoIP-WSG**

This equipment has been tested and found to comply with the limits for a Class B digital device, pursuant to part 15 of the FCC Rules. These limits are designed to provide reasonable protection against harmful interference in a residential installation. This equipment generates, uses and can radiate radio frequency energy and, if not installed and used in accordance with the instructions, may cause harmful interference to radio communications. However, there is no guarantee that interference will not occur in a particular installation. If this equipment does cause harmful interference to radio or television reception, which can be determined by turning the equipment off and on, the user is encouraged to try to correct the interference by one or more of the following measures:

- Reorient or relocate the receiving antenna.
- Increase the separation between the equipment and receiver.
- Connect the equipment into an outlet on a circuit different from that to which the receiver is connected.
- Consult the dealer or an experienced radio/TV technician for help.

This equipment complies with Part 15 of the FCC rules. Operation is subject to the following two conditions:  
(1) this device may not cause harmful interference, and  
(2) this device must accept any interference received, including interference that may cause undesired operation.

**Important information:**

Changes or modifications to the equipment not expressly approved by Music Tribe can void the user’s authority to use the equipment.

[Hereby, Music Tribe declares that this product is in compliance with General Product Safety Regulation (EU) 2023/988, Directive 2014/30/EU, Directive 2011/65/EU and Amendment 2015/863/EU, Directive 2012/19/EU, Regulation 519/2012 REACH SVHC and Directive 1907/2006/EC.

Full text of EU DoC is available at <https://community.musictribe.com/>

EU Representative: Music Tribe Brands DK A/S

Address: Gammel Strand 44, DK-1202 København K, Denmark

UK Representative: Music Tribe Brands UK Ltd.

Address: 8th


Floor, 20 Farringdon Street London EC4A 4AB, United Kingdom






Correct disposal of this product:

This symbol indicates that this product must not be disposed of with household waste, according to the WEEE Directive (2012/19/EU) and your national law. This product should be taken to a collection center licensed for the recycling of waste electrical and electronic equipment (EEE). The mishandling of this type of waste could have a possible negative impact on the environment and human health due to potentially hazardous substances that are generally associated with EEE. At the same time, your cooperation in the correct disposal of this product will contribute to the efficient use of natural resources. For more information about where you can take your waste equipment for recycling, please contact your local city office, or your household waste collection service.

Documents / Resources

	<div><a href="#">behringer AoIP-WSG AoIP Network Module</a> [pdf] User Guide</div> <div>AoIP-WSG AoIP Network Module, AoIP-WSG, AoIP Network Module, Network Module, Module</div>
---	---

References

-  [Behringer | Home](#)
-  [Music Tribe](#)
-  [Music Tribe](#)
- [User Manual](#)

[Manuals+.](#) [Privacy Policy](#)

This website is an independent publication and is neither affiliated with nor endorsed by any of the trademark owners. The "Bluetooth®" word mark and logos are registered trademarks owned by Bluetooth SIG, Inc. The "Wi-Fi®" word mark and logos are registered trademarks owned by the Wi-Fi Alliance. Any use of these marks on this website does not imply any affiliation with or endorsement.