

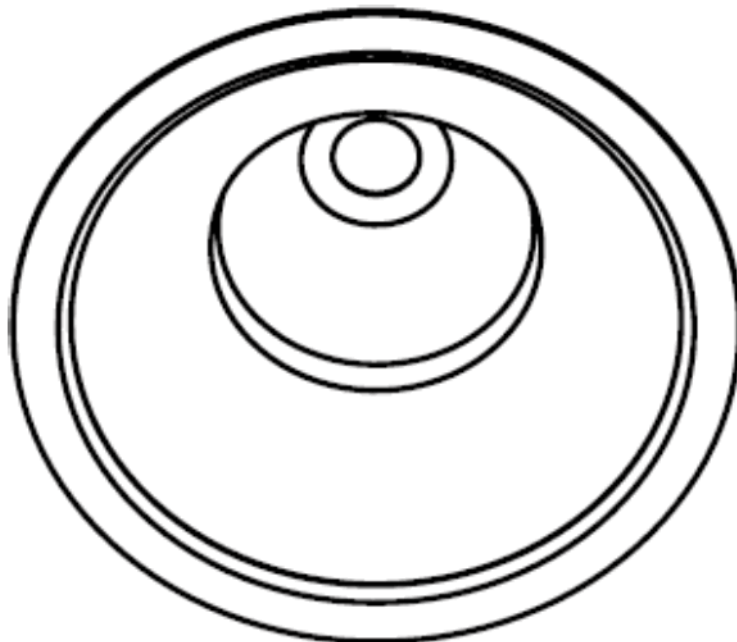


Beghelli DL-IP65 Recessed LED Downlight Instruction Manual

[Home](#) » [Beghelli](#) » Beghelli DL-IP65 Recessed LED Downlight Instruction Manual 

Beghelli

DL-IP65 – instruction manual



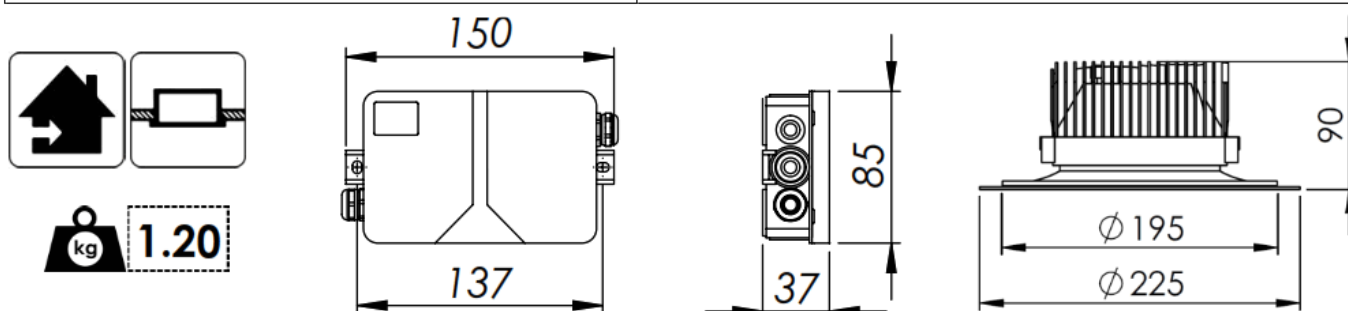
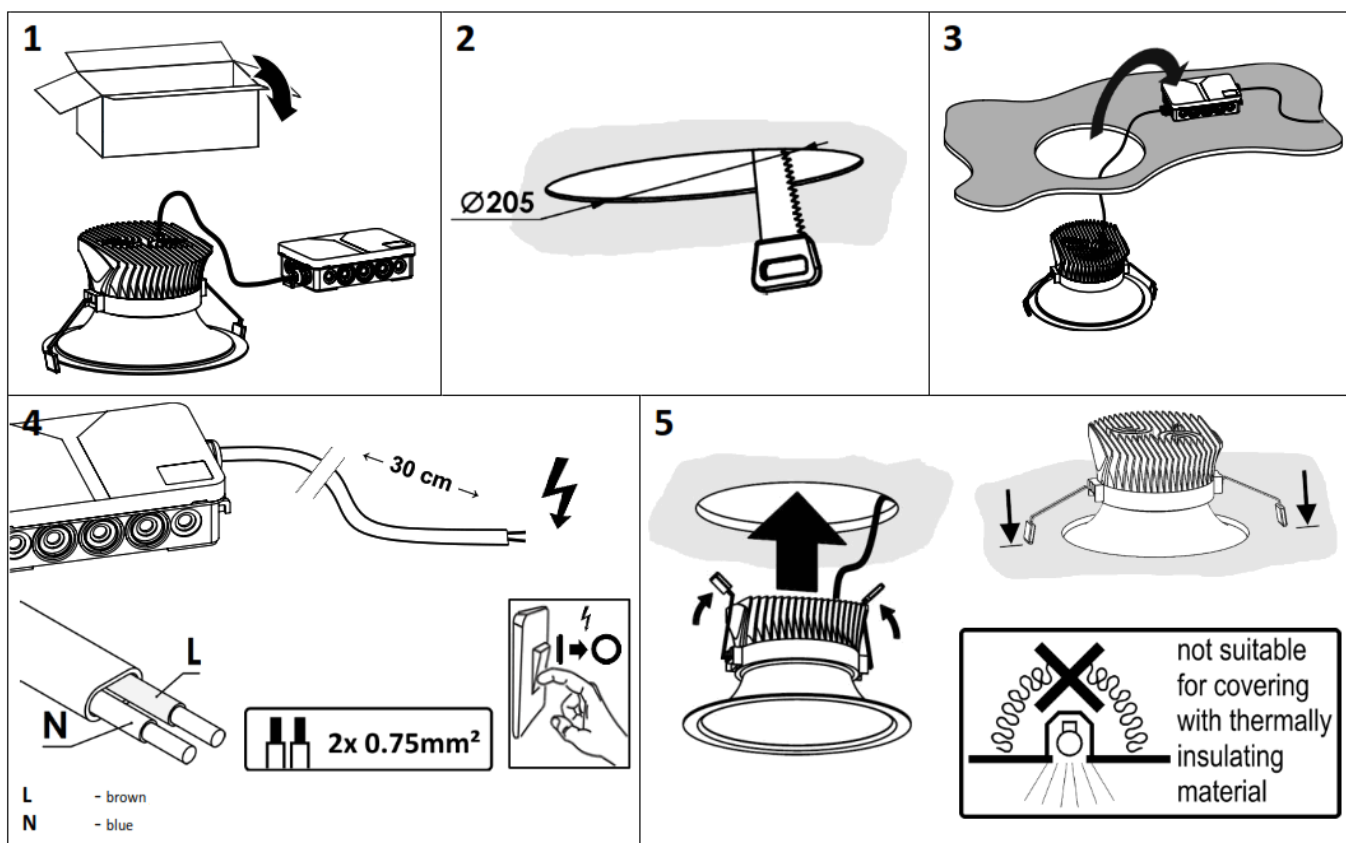
Contents

- 1 DL-IP65 Recessed LED Downlight
- 2 Documents / Resources
 - 2.1 References
- 3 Related Posts

DL-IP65 Recessed LED Downlight

installation instruction

Please read and understand all of the directions, before starting luminaire installation. Keep this instruction for future use.



Information is subject to change without notice



CAUTION!

RISK OF ELECTRIC SHOCK

LED version:

The light source contained in this luminaire shall only be replaced by the manufacturer or his service agent or a similar qualified person.

Installation can only be performed by an authorized electrician; Switch off the electricity supply before carrying out any work; Luminaire must be installed in compliance with all safety requirements; Attention! The exact model of the fixture marked on a label inside it.



IMPORTANT INFORMATION FOR CORRECT
DISPOSAL OF THE PRODUCT IN ACCORDANCE
WITH EC DIRECTIVE 2002/96/EC.

At the end of its working life, the product must not be disposed of as urban waste.

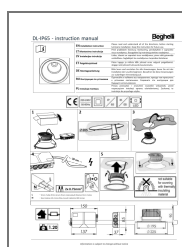
It must be taken to a special local authority differentiated waste collection centre or to a dealer providing this service.

Disposing of a household appliance separately avoids possible negative consequences for the environment and health, deriving from inappropriate disposal and enables the constituent materials to be recovered to obtain significant savings in energy and resources. As a reminder of the need to dispose of household appliances separately, the product is marked with a crossed-out wheeled dustbin.

Beghelli

www.beghelli.it

Documents / Resources



[Beghelli DL-IP65 Recessed LED Downlight](#) [pdf] Instruction Manual
DL-IP65, Recessed LED Downlight, LED Downlight, Recessed Downlight, DL-IP65, Downlight

References

- [Beghelli Lighting, LED, security systems](#)