



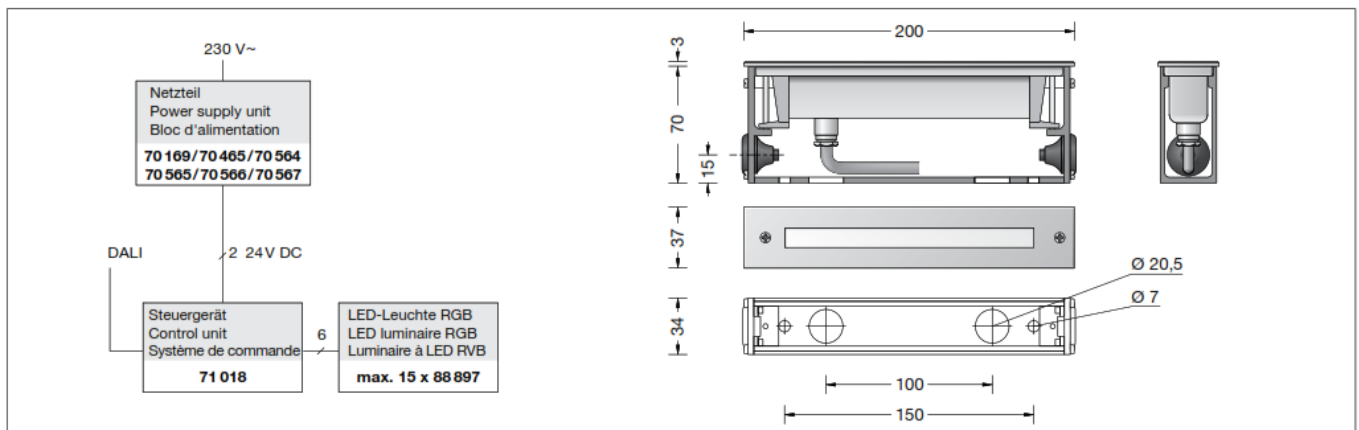
BEGA 88897 In-Ground RGB Luminaire Instruction Manual

[Home](#) » [BEGA](#) » BEGA 88897 In-Ground RGB Luminaire Instruction Manual 

BEGA

88 897

In-ground luminaire RGB
Instructions for use



Contents

- [1 Application](#)
- [2 Product description](#)
- [3 Safety](#)
- [4 Soil conditions](#)
- [5 Installation](#)
- [6 Cleaning · Maintenance](#)
- [7 Accessories](#)
- [8 Documents / Resources](#)
 - [8.1 References](#)

Application

Recessed in-ground luminaire with LEDs RGB for additive colour mix.

For recessed installation in compacted surfaces, paths and places. Drive-over luminaire for vehicles with pneumatic tyres.

Please note:

Luminaire must not be used for installation in road lanes, where the fixture is exposed to a horizontal strain due to braking, acceleration and change of direction.

A power supply unit and a controller are required to operate this luminaire – see accessories.

Lamp	
Module connected wattage	3 W
Luminaire connected wattage	4.1 W
Rated temperature	ta = 25 °C
Ambient temperature	ta max = 35 °C
When installed in heat-insulating material	ta max = 25 °C
Service life criteria	50 000 h / L70
Colour temperature of the white LED	4000 K
Luminaire luminous flux	47 lm
Luminaire luminous efficiency	11,5 lm / W

Product description

Recessed LED luminaire

without power supply unit

Luminaire made of stainless steel Steel grade no 1.4301


Installation housing made of aluminium profile, powder-coated with 2 entries for connection cable up to ø 12 mm

Safety glass, white

Reflector made of pure anodized aluminium water-resistant connecting cable

05RN8-F 4 × 0,75@

Cable length 3 m

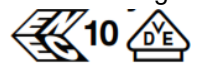
Safety class III 

Protection class IP 67

Dust-tight and protection against temporary immersion

Impact strength IK08

Protection against mechanical impacts < 5 joule



–Safety mark



– Conformity mark

Weight: 0.9 kg

This product contains light sources of energy efficiency class(es) G

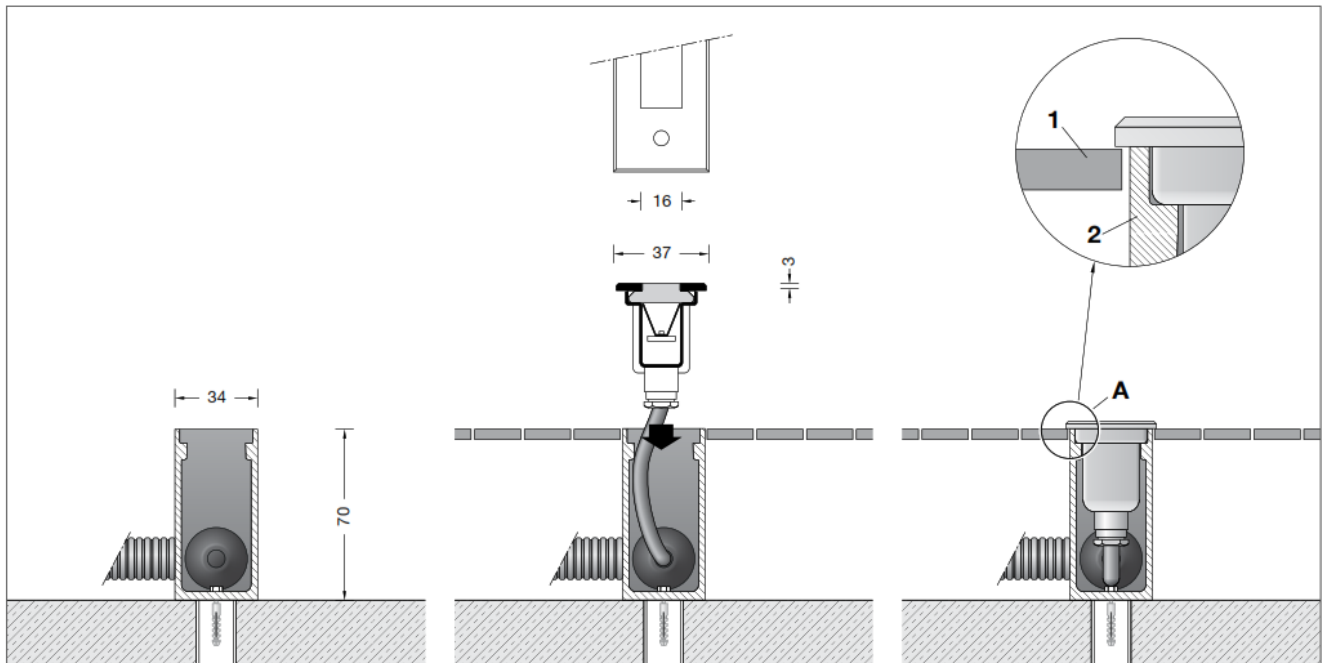
Safety

The installation and operation of this luminaire are subject to national safety regulations.

Installation and commissioning may only be carried out by a qualified electrician.

The manufacturer accepts no liability for damage caused by improper use or installation.

If subsequent modifications are made to the luminaire, the person responsible for these modifications shall be considered the manufacturer.



Notice prior to installation:

To accept the maximum pressure load of 1,000 kg (~10 kN) a proper foundation must be provided by the customer.

The luminaire is mounted in a recess housing made of high-strength aluminium profile.

The pressure load is transferred to the foundation by this housing. Foundation to be provided at site. The foundation must be carried out on firm subgrade.

In order to obtain a firm stability, the recess housing must be firmly concreted in.

During preparation of the foundation proper drainage must be provided, so that entering surface water can drain off.

The lacquering of the recess housing must not be damaged.

For the tightness of the luminaire it is important that the ground surface prepared later is either on the same level or slightly below top edge of the recess housing – see sketch (detail A).

Soil conditions

The luminaire must not permanently have contact with aggressive media.

Aggressive media might be washed out of the soil and might corrode the housing of the luminaire.

In case of an unknown composition of the soil a soil analysis should be made before installation.

Aggressive media that is outgoing from the ground surface might also affect the luminaire.

Thus an overuse of de-icing agents in the surroundings should be avoided.

Parasitic current, occurring from the outside, which is conducted by the luminaire into the soil, will cause corrosion damage.

Suitable counter measures must be carried out.

Please note:

The luminaire can only be operated with an operating device that fulfills the requirements according to EN 61347-2-13.

The maximum idle voltage of 60 V DC must conform to SELV or SELV equivalent.

Installation

Dismantle luminaire from the recess housing.

For this purpose undo screws in the stainless steel frame. Lift luminaire out of the recess housing.

Position recess housing on the foundation (as described above) and fix it with enclosed or any other suitable fixing material.

Push the enclosed protective cover flush into the recess housing. It is meant to protect the recess housing during the construction works against soiling.

After finishing the ground works remove protective cover.

The luminaire is delivered with a 3 m long connecting cable 05RN8-F 4 x 0.75@.

This is firmly encapsulated with the lamp housing and cannot be replaced.

Connect recessed luminaire to – control unit –accessory 71 018 – :

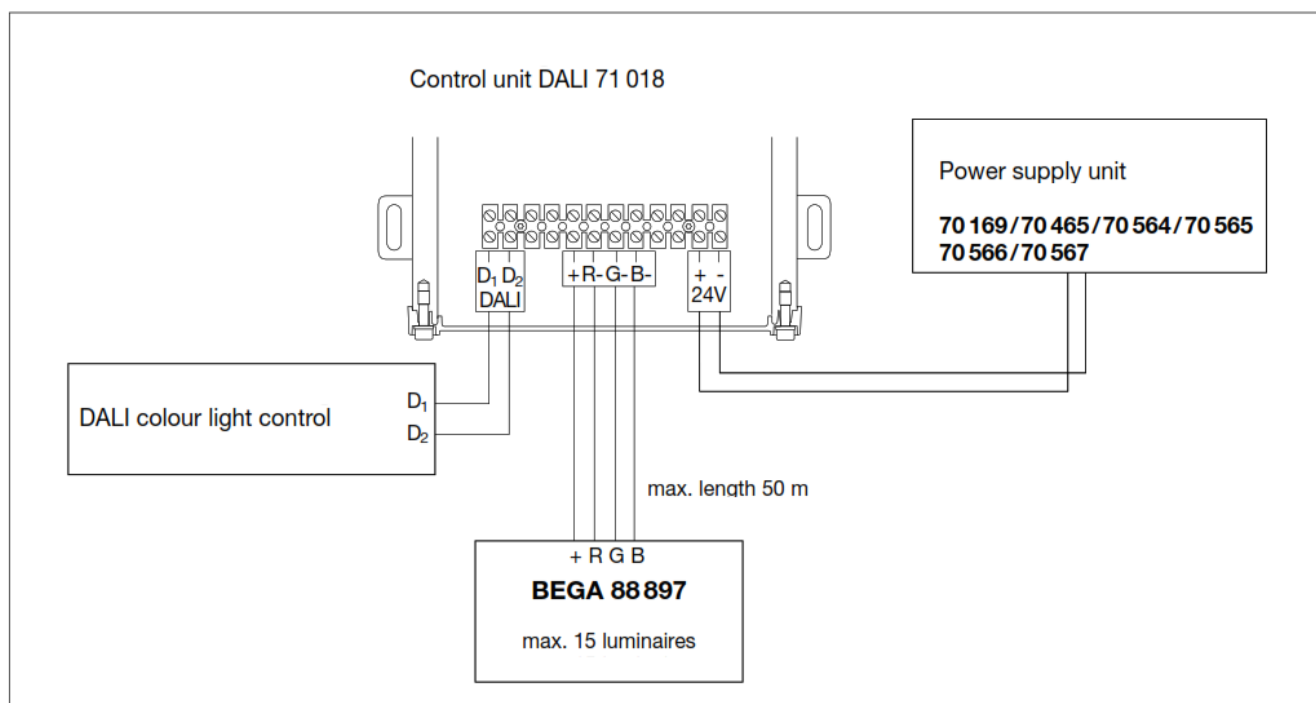
note the correct assignment of the connecting cable. The leads of the connecting cable are marked.

Terminal + :	Conductor red
Terminal R – :	Conductor 1
Terminal G – :	Conductor 2
Terminal B – :	Conductor 3

The electrical connection at the luminaire connecting cable must be carried out on site according to the protection class and safety class.

We recommend to use a distribution box 70 730.

Place luminaire housing into the recess housing and tighten screws.



Cleaning · Maintenance

After installation, the luminaire should first be cleaned. Building dust, residues from contact adhesives, paint splashes and rust film must be completely removed. Never use high pressure cleaners and cleaning implements made of normal steel, steel brushes or steel wool because they cause extraneous rust to form.

When using stainless steel cleaners, please read the directions carefully.

Cleaning agents containing hydrochloric acid and chlorides should never be used.

We recommend cleaning the luminaires regularly.

Accessories

BEGA Safety transformers according to
EN 61558-2-6/VDE 0570, part 2-6

70 564 Power supply unit for 5 – 15 W

70 465 Power supply unit for 10 – 25 W

70 565 Power supply unit for 20 – 35 W

70 566 Power supply unit for 30 – 50 W

70 567 Power supply unit for 40 – 75 W

70 169 Power supply unit for 70 – 150 W

71 018 Control unit DALI

70 730 Distribution box for installation in soil with 7 cable entries Connection terminals 5 x 4@

For the accessories a separate instructions for use can be provided upon request.

BEGA

Technical amendments reserved

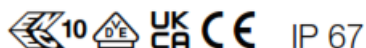
BEGA Gartenbrink-Leuchten KG

Postfach 31 60

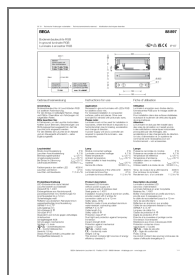
58689 Menden

info@bega.com

www.bega.com



Documents / Resources



[BEGA 88897 In-Ground RGB Luminaire](#) [pdf] Instruction Manual

88897, 88897 In-Ground RGB Luminaire, In-Ground RGB Luminaire, RGB Luminaire, Luminair e

References

- BEGA **[BEGA · Das gute Licht.](#)**

Manuals+