



BEGA 85235 Performance Floodlight Mounting Box Instruction Manual

[Home](#) » [BEGA](#) » BEGA 85235 Performance Floodlight Mounting Box Instruction Manual 

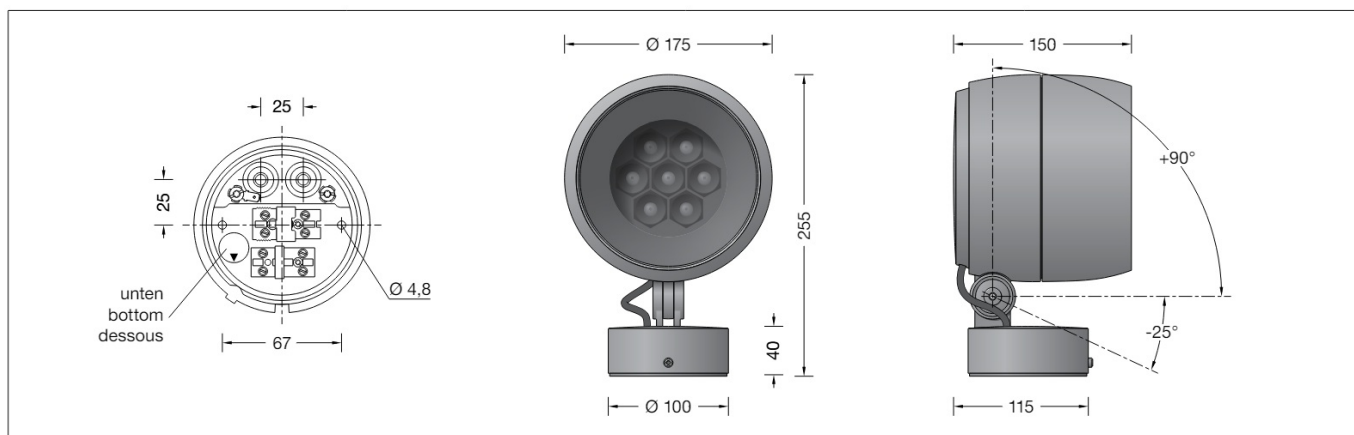
BEGA 85235 Performance Floodlight Mounting Box



Contents

- [1 Dimensions](#)
- [2 Application](#)
- [3 Product Description](#)
- [4 Safety](#)
- [5 Overvoltage Protection](#)
- [6 Installation](#)
- [7 Lamp](#)
- [8 85 235K3](#)
- [9 85 235K4](#)
- [10 Lighting Technology](#)
- [11 Cleaning · Maintenance](#)
- [12 Maintenance](#)
- [13 Replacing the LED module](#)
- [14 Accessories](#)
- [15 Spares](#)
- [16 Customer Support](#)
- [17 Documents / Resources](#)
 - [17.1 References](#)
- [18 Related Posts](#)

Dimensions



Application

Performance floodlight with mounting box.

For a variety of interior and exterior lighting applications.

BEGA Ultradark Optics® offer a maximum of illumination and eye comfort due to a minimised diffuse light percentage and highly efficient glare suppression.

Product Description

Luminaire made of aluminium alloy,

aluminium and stainless steel

BEGA Unidure® coating technology

Colour graphite or silver

Matt safety glass

Internal louvres and polymer lens

BEGA Ultradark Optics®

Louvres and interior surface of anti-glare ring

with maximum light-absorbing ultra-black

nano-coating

Rotation range of floodlight 350°

Swivel range $-25^\circ/+90^\circ$

Mounting box with 2 fixing holes

$\varnothing 4.8\text{mm} \cdot 67\text{mm}$ spacing

2 cable entries for through-wiring of mains

supply cable $\varnothing 7\text{-}10.5\text{mm}$, max. $5\text{G}1.5@$

Connecting terminal $2.5@$

with plug connection

Earth conductor connection

BEGA Ultimate Driver®

Complies with flicker requirements in

accordance with IEEE 1789,

DIN IEC/TR 63158, DIN IEC/TR 61547-1

LED power supply unit

$220\text{-}240\text{ V}$ \sim $0/50\text{-}60\text{ Hz}$

DC $176\text{-}264\text{ V}$

DALI-controllable

Number of DALI addresses: 1

Basic insulation is provided between the mains

and control cables

BEGA Thermal Control®

Temporary thermal regulation to protect

temperature-sensitive components without

switching off the luminaire

Safety class I
Protection class IP 65
Dust-tight and protection against water jets
Impact strength IK06
Protection against mechanical
impacts < 1 joule
CE – Conformity mark
Wind catching area: 0.031 m²
This product contains light sources of energy
efficiency class(es) E, F

Safety

The installation and operation of this luminaire are subject to national safety regulations.
Installation and commissioning may only be carried out by a qualified electrician.
The manufacturer accepts no liability for damage caused by improper use or installation.
If subsequent modifications are made to the luminaire, the person responsible for these modifications shall be considered the manufacturer.

Overvoltage Protection

The electronic components installed in the luminaire are protected against overvoltage in accordance with DIN EN 61547.

To achieve an additional protection against e.g. transients, etc. we recommend separate overvoltage protection components.

You can find them on our website at www.bega.com.

The ideal protection of all electronic components installed in the luminaires is achieved by using bounce-free switching contacts such as an electronic relay (solid-state relay), e.g. BEGA 71320.

Please note:

Contact with the inner surface of the luminaire reflector should be avoided in order to permanently protect the special stray light minimising properties of the nano-coating.

Installation

LED are high-quality electronic components! Please avoid touching the light output opening of the LED directly during installation or relamping.

Undo hexagon socket head screws (wrench size 3 mm) at the mounting box and remove mounting plate.

Disconnect the earth conductor connection from the plug connection.

Pass the power connecting cable through the cable entry in the mounting plate.

Note position of application of the mounting plate "arrow down".

Fix the mounting plate with enclosed or any other suitable fixing material onto the mounting surface.

Be sure to use the gasket rings supplied.


Make earth conductor connection.

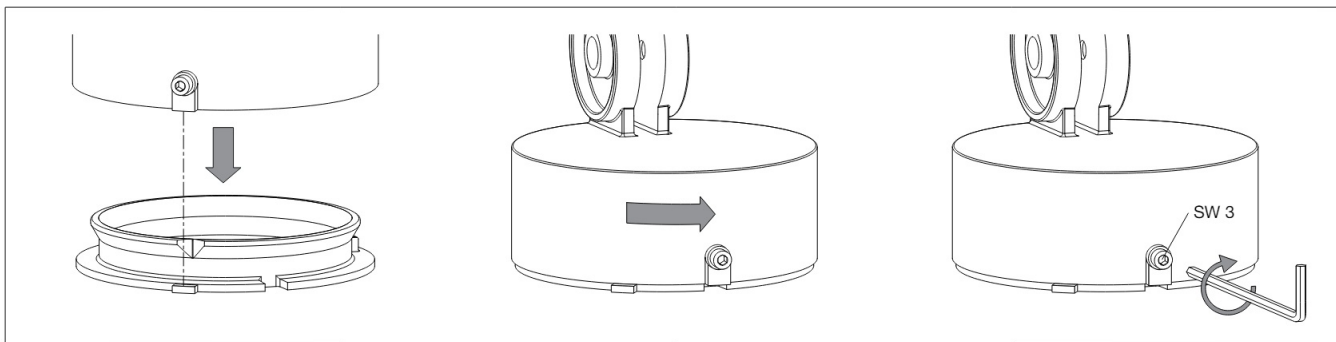
Push silicone sleeves over the lines and make electrical connection to terminal (plug connection).

For digital control please use the 2-pole plug connector DA, DA.

In case this connector is not used the luminaire will be operated at full light output.

Push plug into coupler as far as it will go.

Connect the floodlight unit's green and yellow protective earth conductor to the terminal marked  in the mounting plate.



Make sure that gasket is positioned correctly.

Place floodlight unit onto the mounting plate as displayed in the sketch, align and screw together firmly.

Adjustment of beam direction:

Undo joint screw (hexagon socket head wrench size 6 mm) and set the desired beam direction.

Tighten the joint screw.

Torque = 12Nm.

Lamp

Module connected wattage	25.2 W
Luminaire connected wattage	28 W
Rated temperature	ta=25 °C
Ambient temperature	ta max=35 °C

85 235K3

Module designation	LED-1254/930
Colour temperature	3000 K
Colour rendering index	CRI >90
Module luminous flux	2825 lm
Luminaire luminous flux	1426 lm
Luminaire luminous efficiency	50,9 lm/W

85 235K4

Module designation	LED-1254/940
Colour temperature	4000 K
Colour rendering index	CRI >90
Module luminous flux	3070 lm
Luminaire luminous flux	1550 lm
Luminaire luminous efficiency	55,4 lm/W

Lighting Technology

Symmetrically focused broad spread light distribution with minimal diffuse light percentage.
Half beam angle 56°

Cleaning · Maintenance

Clean luminaire regularly with solvent-free cleansers from dirt and deposits. Do not use high pressure cleaners.

Maintenance

The connecting cable between mounting box and floodlight has to be inspected regarding obvious damages and has to be replaced by a qualified electrician only

Replacing the LED module

The designation of the LED module is noted on a separate label in the luminaire or on the underside of the specific LED module.

The light colour and light output of BEGA replacement modules correspond to those of the modules originally fitted. The module can be replaced by a qualified person using commercially available tools.

Disconnect the system from the power supply.

Open the floodlight:

Loosen the locking pin (hexagon socket wrench SW2.5) on the back of the floodlight housing. Remove the trim ring along with the safety glass and reflector by twisting it anti-clockwise.

Please note:

Contact with the inner surfaces of the louvres and luminaire reflector should be avoided in order to permanently protect the special stray light-minimising properties of the nano-coating.

Grasp the louvres from the outside and lift them out. Loosen the three mounting screws (Torx drive T20) and lift the lens holder (with the loosely inserted lenses) upward horizontally out of the housing.

Replace LED module.

Please follow the installation instructions for the LED module.

Install in reverse order.

When installing the lens holder, make sure that the LED connecting cable is not pinched.

Inspect and, if necessary, replace the luminaire gaskets.

Defective glass must be replaced.

Place the trim ring with glass and reflector on the floodlight housing so that the notches in the trim ring and luminaire housing sit on top of each other.

Twist on the trim ring clockwise as far as the stop. Screw in the locking pin.

Accessories

71333 Shield

71 **338** Cylindrical shield

For the accessories a separate instructions for use can be provided upon request.

Spares

Spare glass internal	14 001 631
Trim ring graphite with glass	25 000 281
Trim ring silver with glass	25 000 282
LED power supply unit	DEV-0270/1200i
LED module 3000 K	LED-1254/930
LED module 4000 K	LED-1254/940
Gasket housing	83 001 579
Gasket mounting box	83 001 839
Gasket trim ring	83 002 306

Customer Support

4/4 BEGA Gantenbrink-Leuchten KG · Postfach 3160 · 58689 Menden ·

info@bega.com ·

www.bega.com

UK
CA CE IP 65

BEGA

Documents / Resources



[BEGA 85235 Performance Floodlight Mounting Box](#) [pdf] Instruction Manual 85235 Performance Floodlight Mounting Box, Performance Floodlight Mounting Box, Floodlight Mounting Box, Mounting Box

References

- BEGA [BEGA · Das gute Licht.](#)
- [User Manual](#)

[Manuals+](#), [Privacy Policy](#)

This website is an independent publication and is neither affiliated with nor endorsed by any of the trademark owners. The "Bluetooth®" word mark and logos are registered trademarks owned by Bluetooth SIG, Inc. The "Wi-Fi®" word mark and logos are registered trademarks owned by the Wi-Fi Alliance. Any use of these marks on this website does not imply any affiliation with or endorsement.