

BEGA 85232 Performance Floodlight with Mounting Box



BEGA 85232 Performance Floodlight with Mounting Box Instruction Manual

[Home](#) » [BEGA](#) » BEGA 85232 Performance Floodlight with Mounting Box Instruction Manual 

Contents

- [1 BEGA 85232 Performance Floodlight with Mounting Box](#)
- [2 Product Information](#)
- [3 Dimensions](#)
- [4 Product Description](#)
- [5 Safety](#)
- [6 Installation](#)
- [7 Specifications](#)
- [8 Maintenance](#)
- [9 Replacing the LED module](#)
- [10 Accessories And Spares](#)
- [11 Contact](#)
- [12 Documents / Resources](#)
 - [12.1 References](#)

BEGA

BEGA 85232 Performance Floodlight with Mounting Box



Product Information

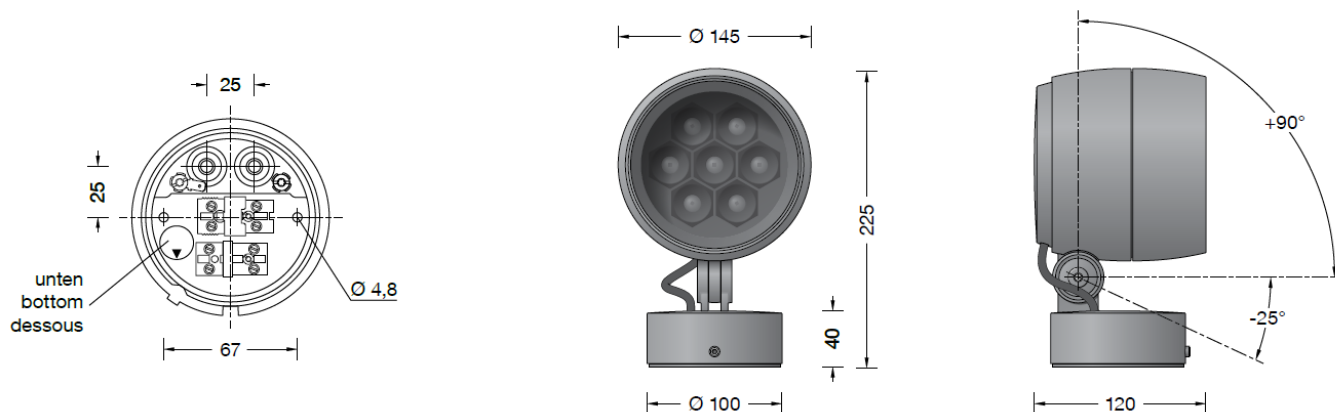
Specifications

- **Product Name:** Performance Floodlight with Mounting Box
- **Application:** For a variety of interior and exterior lighting applications
- **Installation:** To be carried out by a qualified electrician
- **Overvoltage Protection:** In accordance with DIN EN 61547
- **Beam Direction Adjustment Torque:** 7 Nm

FAQ

- **Q:** Can I install the floodlight without professional help?
 - **A:** No, the installation should only be done by a qualified electrician to ensure safety and proper functionality.
- **Q:** How do I protect the electronic components from overvoltage?
 - **A:** Additional overvoltage protection components are recommended, along with using bounce-free switching contacts like an electronic relay.


Dimensions




Application

- Performance floodlight with mounting box.
- For a variety of interior and exterior lighting applications.
- BEGA Ultradark Optics® offer maximum of illumination and eye comfort due to a minimised diffuse light percentage and highly efficient glare suppression.

Product Description

- Luminaire made of aluminium alloy, aluminium and stainless steel
- BEGA Unidure® coating technology
- Colour graphite or silver
- Matt safety glass
- Internal louvres and polymer lens
- BEGA Ultradark Optics®
- Louvres and interior surface of anti-glare ring with maximum light-absorbing ultra-black nano-coating
- Rotation range of floodlight 350°
- Swivel range -25°/+90°
- Mounting box with 2 fixing holes
- \varnothing 4.8 mm · 67 mm spacing
- 2 cable entries for through-wiring of mains supply cable \varnothing 7-10.5 mm, max. 5 G 1.5@
- Connecting terminal 2.5@ with plug connection
- Earth conductor connection
- BEGA Ultimate Driver®
- Complies with flicker requirements in accordance with IEEE 1789,
- DIN IEC/TR 63158, DIN IEC/TR 61547-1
- LED power supply unit 220-240 V  0/50-60 Hz
- DC 176-264 V
- DALI-controllable
- Number of DALI addresses: 1
- Basic insulation is provided between the mains and control cables
- BEGA Thermal Control®
- Temporary thermal regulation to protect temperature-sensitive components without switching off the luminaire
- Safety class I

- Protection class IP 65
- Dust-tight and protection against water jets
-  – Conformity mark
- **Wind catching area:** 0.023 m²
- This product contains light sources of energy efficiency class(es) E, F

Safety

- The installation and operation of this luminaire are subject to national safety regulations.
- Installation and commissioning may only be carried out by a qualified electrician.
- The manufacturer accepts no liability for damage caused by improper use or installation.
- If subsequent modifications are made to the luminaire, the person responsible for these modifications shall be considered the manufacturer.

Overvoltage protection


- The electronic components installed in the luminaire are protected against overvoltage in accordance with DIN EN 61547.
- To achieve an additional protection against e. g. transients, etc. we recommend separate overvoltage protection components.
- You can find them on our website at www.bega.com.
- The ideal protection of all electronic components installed in the luminaires is achieved by using bounce-free switching contacts such as an electronic relay (solid-state relay), e.g. BEGA 71 320.

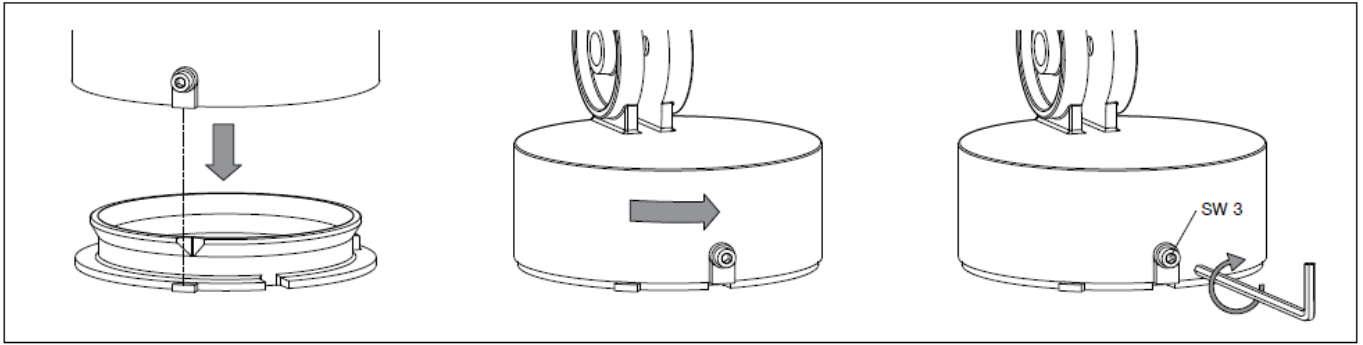
Please note:

- Contact with the inner surface of the luminaire reflector should be avoided in order to permanently protect the special stray light-minimising properties of the nano-coating.

Installation

- LED are high-quality electronic components!
- Please avoid touching the light output opening of the LED directly during installation or relamping.
- Undo hexagon socket head screws (wrench size 3 mm) at the mounting box and remove mounting plate.
- Disconnect the earth conductor connection from the plug connection.
- Pass the power connecting cable through the cable entry in the mounting plate.
- Note position of application of the mounting plate “arrow down”.
- Fix the mounting plate with enclosed or any other suitable fixing material onto the mounting surface.
- Be sure to use the gasket rings supplied.
- Make earth conductor connection.
- Push silicone sleeves over the lines and make electrical connection to terminal (plug connection).
- For digital control please use the 2-pole plug connector DA, DA.
- In case this connector is not used the luminaire will be operated at full light output.
- Push plug into coupler as far as it will go.

- Connect the floodlight unit's green and yellow protective earth conductor to the terminal marked  in the mounting plate.



Make sure that gasket is positioned correctly.

Place floodlight unit onto the mounting plate as displayed in the sketch, align and screw together firmly.

Adjustment of beam direction:

Undo joint screw (hexagon socket head wrench size 5 mm) and set the desired beam direction.

- Tighten the joint screw.
- Torque = 7 Nm.

Specifications

Lamp

- **Module connected wattage** / 18.3 W
- **Luminaire connected wattage** / 20.5 W
- **Rated temperature** / $t_a = 25\text{ }^{\circ}\text{C}$
- **Service life criteria** / 50 000 h / L70

85 232 K3

- **Module designation** / LED-1254/930
- **Colour temperature** / 3000 K
- **Colour rendering index** / CRI > 90
- **Module luminous flux** / 2190 lm
- **Luminaire luminous flux** / 1542 lm
- **Luminaire luminous efficiency** / 75,2 lm / W

85 232 K4

- **Module designation** / LED-1254/940
- **Colour temperature** / 4000 K
- **Colour rendering index** / CRI > 90

- **Module luminous flux** / 2375 lm
- **Luminaire luminous flux** / 1672 lm
- **Luminaire luminous efficiency** / 81,6 lm / W

Lighting technology

- Symmetrically focused wide beam light distribution with minimal diffuse light percentage.
- Half beam angle 25°

Maintenance

Cleaning / Maintenance

- Clean luminaire regularly with solvent-free cleansers from dirt and deposits.
- Do not use high pressure cleaners.

Maintenance

- The connecting cable between mounting box and floodlight has to be inspected regarding obvious damages and has to be replaced by a qualified electrician only.

Replacing the LED module

- The designation of the LED module is noted on a separate label in the luminaire or on the underside of the specific LED module.
- The light colour and light output of BEGA replacement modules correspond to those of the modules originally fitted. The module can be replaced by a qualified person using commercially available tools.
- Disconnect the system from the power supply.

Open the floodlight:

- Loosen the locking pin (hexagon socket wrench SW 2.5) on the back of the floodlight housing.
- Remove the trim ring along with the safety glass and reflector by twisting it anti-clockwise.

Please note:

- Contact with the inner surfaces of the louvres and luminaire reflector should be avoided in order to permanently protect the special stray light-minimising properties of the nano-coating.
- Grasp the louvres from the outside and lift them out. Loosen the three mounting screws (Torx drive T20) and lift the lens holder (with the loosely inserted lenses) upward horizontally out of the housing.
- Replace LED module.
- Please follow the installation instructions for the LED module.
- Install in reverse order.
- When installing the lens holder, make sure that the LED connecting cable is not pinched.
- Inspect and, if necessary, replace the luminaire gaskets.

- Defective glass must be replaced.
- Place the trim ring with glass and reflector on the floodlight housing so that the notches in the trim ring and luminaire housing sit on top of each other.
- Twist on the trim ring clockwise as far as the stop. Screw in the locking pin.

Accessories And Spares

Accessories

- **71 332** / Shield
- **71 337** / Cylindrical shield

For the accessories a separate instructions for use can be provided upon request.

Spares

- **Spare glass internal** / 14 001 631
- **Trim ring graphite with glass** / 25 000 277
- **Trim ring silver with glass** / 25 000 278
- **LED power supply unit** / DEV-0485/900i
- **LED module 3000 K** / LED-1254/930
- **LED module 4000 K** / LED-1254/940
- **Gasket housing** / 83 000 521
- **Gasket mounting box** / 83 001 839
- **Gasket end ring** / 83 001 952

Contact

BEGA Gantenbrink-Leuchten KG

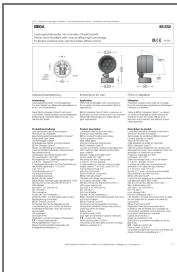
- Postfach 31 60 · 58689 Menden
- info@bega.com
- www.bega.com

UK
CA

CE

IP 65

Documents / Resources



[BEGA 85232 Performance Floodlight with Mounting Box](#) [pdf] Instruction Manual
85232, 85232 Performance Floodlight with Mounting Box, Performance Floodlight with Mountin
g Box, Floodlight with Mounting Box, Mounting Box, Box

References

- BEGA **[BEGA · Das gute Licht.](#)**
- **[User Manual](#)**

[Manuals+](#), **[Privacy Policy](#)**

This website is an independent publication and is neither affiliated with nor endorsed by any of the trademark owners. The "Bluetooth®" word mark and logos are registered trademarks owned by Bluetooth SIG, Inc. The "Wi-Fi®" word mark and logos are registered trademarks owned by the Wi-Fi Alliance. Any use of these marks on this website does not imply any affiliation with or endorsement.