

BEGA 85139 Performance Flood Light



BEGA 85139 Performance Flood Light Instruction Manual

[Home](#) » [BEGA](#) » BEGA 85139 Performance Flood Light Instruction Manual 

Contents

- [1 BEGA 85139 Performance Flood Light](#)
- [2 Product Information](#)
- [3 Product Usage Instructions](#)
- [4 FAQs](#)
- [5 Performance Floodlight](#)
- [6 Instructions for use](#)
- [7 Product Description](#)
- [8 Safety](#)
- [9 Overvoltage protection](#)
- [10 Installation](#)
- [11 Cleaning Maintenance](#)
- [12 Accessories](#)
- [13 CONTACT](#)
- [14 Documents / Resources](#)
 - [14.1 References](#)

BEGA

BEGA 85139 Performance Flood Light



Product Information

- **Specifications:**

- **Product Name:** Performance Floodlight
- **Model Number:** 85 139
- **Lamp Module Connected Wattage:** 36.8 W
- **Luminaire Connected Wattage:** 40 W
- **Colour Temperature:** 3000 K or 4000 K
- **Colour Rendering Index (CRI):** > 90
- **Module Luminous Flux:** 5145 lm – 5220 lm
- **Luminaire Luminous Flux:** 3834 lm – 3890 lm
- **Luminaire Luminous Efficiency:** 95.8 lm/W – 97.2 lm/W

Product Usage Instructions

- **Application:**

- The Performance Floodlight is suitable for a variety of interior and exterior lighting applications.

- **Safety:**

- Installation and operation must comply with national safety regulations.
- Only a qualified electrician should perform installation and commissioning to avoid damage due to improper use or installation.
- Any modifications made to the luminaire must be done by a qualified individual.

- **Overvoltage Protection:**

- The luminaire's electronic components are protected against overvoltage according to DIN EN 61547.
- Additional protection against transients is recommended through separate overvoltage protection components available on the manufacturer's website.

- **Installation:**

- Handle LED components with care during installation to avoid direct contact with the light output opening.
- Place the floodlight unit on the mounting plate as shown in the diagram, align it, and securely fasten it with screws.

- To adjust the beam direction, loosen the joint screw using a 5 mm hexagon socket head wrench, set the desired direction, and then tighten the screw with a torque of 7 Nm.

FAQs

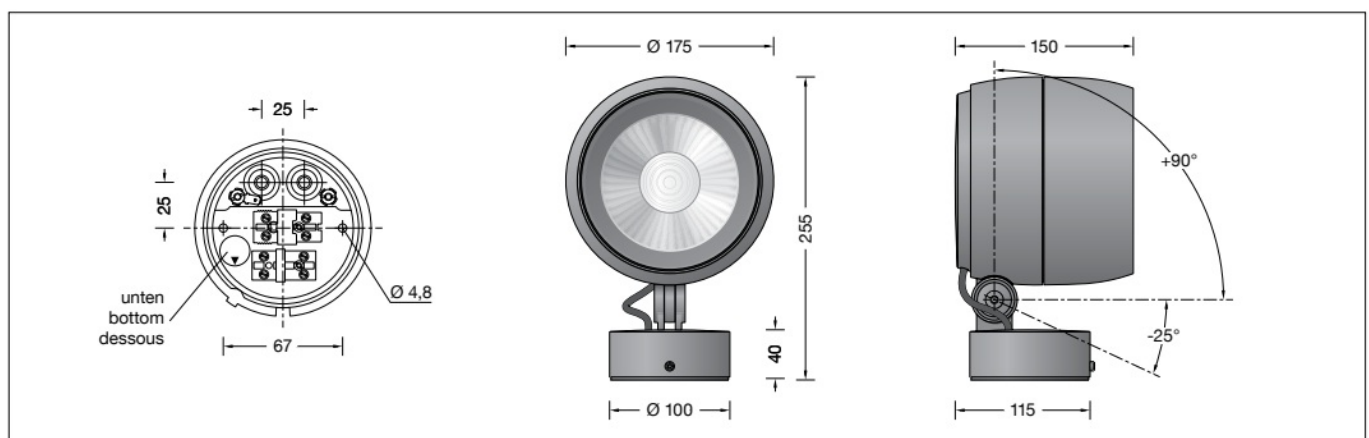
- **Q: Can I install the Performance Floodlight myself?**

- **A:** Installation and commissioning should only be carried out by a qualified electrician to ensure safety and proper functionality.

- **Q: What should I do if I need to modify the luminaire?**

- **A:** Any modifications to the luminaire should be performed by a qualified individual to avoid voiding the manufacturer's liability.

Performance Floodlight



Instructions for use

Application

- Performance floodlight with mounting box.
- For a variety of interior and exterior lighting applications.

Product Description

- Luminaire made of aluminium alloy, aluminium and stainless steel
- BEGA Unidure® coating technology
- Colour graphite or silver
- Clear safety glass
- Silicone gasket
- The reflector surface is made of pure aluminium
- BEGA Hybrid Optics®
- The rotation range of floodlight is 350°
- Swivel range $-25^\circ/+90^\circ$
- Mounting box with 2 fixing holes $\varnothing 4.8\text{mm}$ · 67mm spacing 2 cable entries for through-wiring of mains supply cable $\varnothing 7\text{-}10.5\text{mm}$, max. 5G1.5@

- Connecting terminal 2.5@ with plug connection
- Earth conductor connection
- BEGA Ultimate Driver®
- Complies with flicker requirements by IEEE 1789,
- DIN IEC/TR 63158, DIN IEC/TR 61547-1
- LED power supply unit 220-240 V x 0/50-60 Hz
- DC 176-264 V
- DALI-controllable
- Number of DALI addresses: 1
- Basic insulation is provided between the mains and control cables
- BEGA Thermal Control®
- Temporary thermal regulation to protect temperature-sensitive components without switching off the luminaire
- Safety class I
- Protection class IP 65
- Dust-tight and protection against water jets
- Impact strength IK06
- Protection against mechanical impacts < 1 joule c – Conformity mark
- **Wind catching area:** 0.031 m²
- **Weight:** 2.8 kg

This product contains light sources of energy efficiency class(es) E

Lighting technology

- Symmetrical wide beam light distribution Half beam angle 54°
- For special lighting applications, an optical filter can be used to change the symmetrical light cone into a flat beam light distribution.

Lamp

- Module connected wattage 36.8 W
- Luminaire connected wattage 40 W
- Rated temperature $t_a=25\text{ }^{\circ}\text{C}$
- Ambient temperature $t_a\text{ max}=40\text{ }^{\circ}\text{C}$

85 139K3

- Module designation LED-0780/930
- Colour temperature 3000 K
- Colour rendering index CRI >90
- Module luminous flux 5145 lm
- Luminaire luminous flux 3834 lm
- Luminaire luminous efficiency 95,8 lm/W

- Module designation LED-0780/940
- Colour temperature 4000 K
- Colour rendering index CRI >90
- Module luminous flux 5220 lm
- Luminaire luminous flux 3890 lm
- Luminaire luminous efficiency 97,2 lm/W

Safety

- The installation and operation of this luminaire are subject to national safety regulations.
- Installation and commissioning may only be carried out by a qualified electrician.
- The manufacturer accepts no liability for damage caused by improper use or installation.
- If subsequent modifications are made to the luminaire, the person responsible for these modifications shall be considered the manufacturer.

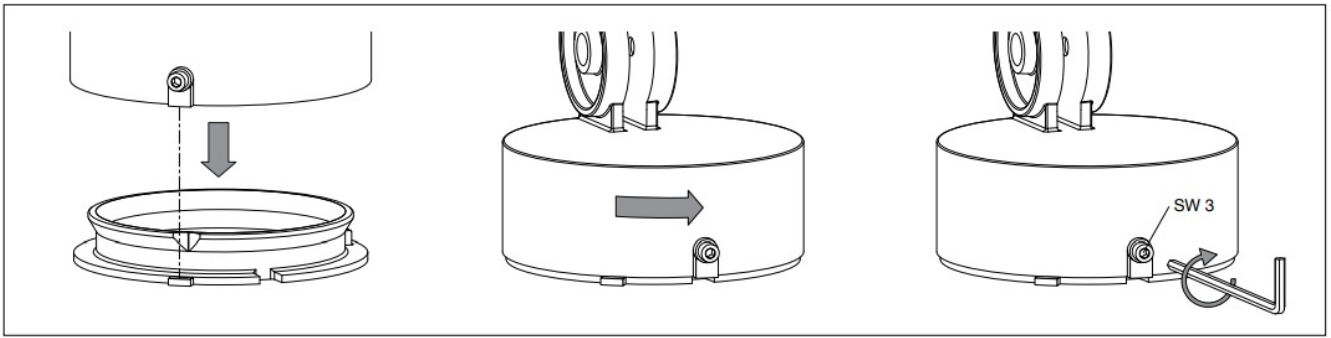
Overvoltage protection

- The electronic components installed in the luminaire are protected against overvoltage per DIN EN 61547.
- To achieve additional protection against e.g. transients, etc. we recommend separate overvoltage protection components.
- You can find them on our website at www.bega.com.
- The ideal protection of all electronic components installed in the luminaires is achieved by using bounce-free switching contacts such as an electronic relay (solid-state relay), e.g. BEGA 71320.

Installation

LEDs are high-quality electronic components!

- Please avoid touching the light output opening of the LED directly during installation or relamping.
- Undo the hexagon socket head screw (wrench size 3mm) up to the stop and disassemble the mounting plate.
- Pass the power connecting cable through the cable entry in the mounting plate.
- Note the position of application of the mounting plate "arrow down".
- Fix the mounting plate with enclosed or any other suitable fixing material onto the mounting surface.
- Be sure to use the gasket rings supplied.
- Make an earth conductor connection.
- Push silicone sleeves over the lines and make an electrical connection to the terminal (plug connection).
- For digital control please use the 2-pole plug connector DA, DA.
- In case this connector is not used the luminaire will be operated at full light output.
- Push plug into the coupler as far as it will go.
- Connect the floodlight unit's green and yellow protective earth conductor to the terminal marked 1 in the mounting plate.
- Make sure that the gasket is positioned correctly.



- Place the floodlight unit onto the mounting plate as displayed in the sketch, and align and screw together firmly.

Adjustment of beam direction:

- Undo the joint screw (hexagon socket head wrench size 5 mm) and set the desired beam direction.
- Tighten the joint screw.
- **Torque** = 7Nm.

Cleaning Maintenance

- Clean the luminaire regularly with solvent-free cleansers from dirt and deposits.
- Do not use high-pressure cleaners.

Maintenance

- The connecting cable between mounting box and the floodlight has to be inspected for obvious damages and has to be replaced by a qualified electrician only.

Please note:

- Do not remove the desiccant bag from the luminaire housing.
- It is needed to remove residual moisture.

Replacing the LED module

- The designation of the LED module is noted on a separate label in the luminaire or on the underside of the specific LED module.
- The light colour and light output of BEGA replacement modules correspond to those of the modules originally fitted. The module can be replaced by qualified persons using standard tools.
- Disconnect the system.

Open the floodlight:

- Undo the locking pin (hexagon socket head wrench size 2.5 mm) on the back side of the floodlight housing.
- Remove the trim ring along with the safety glass and reflector by twisting it counterclockwise.
- Replace the LED module.
- Please follow the installation instructions for the LED module.

- Inspect and, if necessary, replace the luminaire gaskets.
- The defective glass must be replaced.
- Place the trim ring with glass and reflector on the floodlight housing in such a way that the notches in the trim ring and floodlight housing align on top of each other.
- Twist on the trim ring clockwise as far as the stop. Tighten the locking pin.

Accessories

- **71 291** Optical filter flat beam
- **71333** Shield
- **71 338** Cylindrical shield

For the accessories, separate instructions for use can be provided upon request.

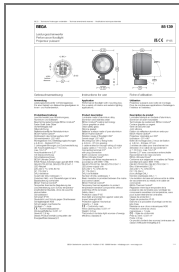
Spares

- **Trim ring graphite with glass** 25 000 281
- **Trim ring silver with glass** 25 000 282
- **LED power supply unit** DEV-0270/1050i
- **LED module 3000 K** LED-0780/930
- **LED module 4000 K** LED-0780/940
- **Reflector** 75 005 099
- **Gasket housing** 83 001 579
- **Gasket mounting** box 83 001 839
- **Gasket trim ring** 83 002 306

CONTACT

- BEGA Gantenbrink-Leuchten KG
 - Postfach 3160
 - 58689 Menden
 - info@bega.com.
 - www.bega.com.
-

Documents / Resources



[BEGA 85139 Performance Flood Light](#) [pdf] Instruction Manual
85139 Performance Flood Light, 85139, Performance Flood Light, Flood Light, Light

References

- BEGA **[BEGA · Das gute Licht.](#)**
- **[User Manual](#)**

[Manuals+](#), [Privacy Policy](#)

This website is an independent publication and is neither affiliated with nor endorsed by any of the trademark owners. The "Bluetooth®" word mark and logos are registered trademarks owned by Bluetooth SIG, Inc. The "Wi-Fi®" word mark and logos are registered trademarks owned by the Wi-Fi Alliance. Any use of these marks on this website does not imply any affiliation with or endorsement.