



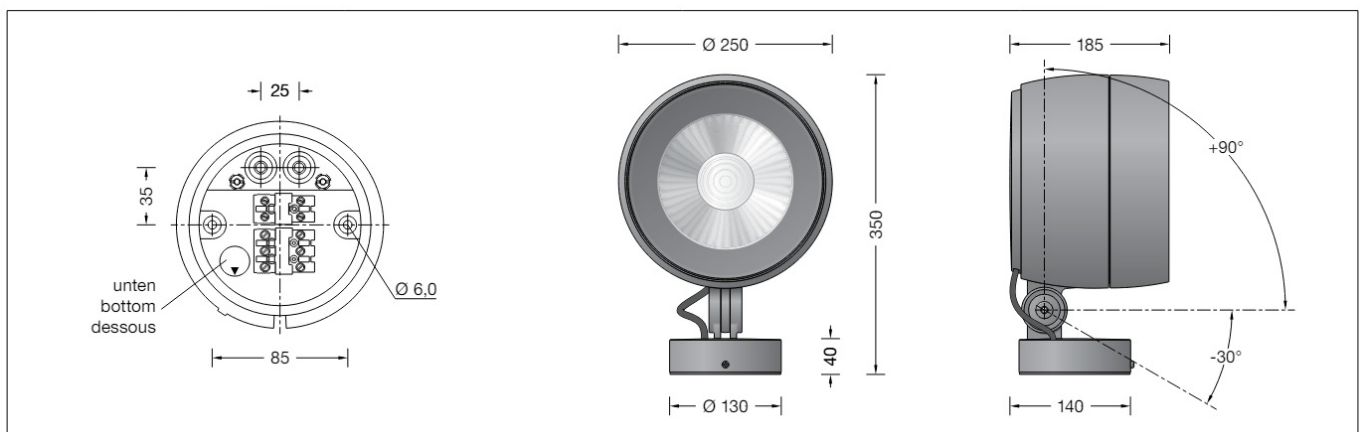
## BEGA 85135 Performance Floodlight Instruction Manual

[Home](#) » [BEGA](#) » BEGA 85135 Performance Floodlight Instruction Manual 

# BEGA

Technical amendments reserved  
Performance floodlight  
85 135

UK  
CA  IP 65



Instructions for use

## Contents

- [1 Application](#)
- [2 Product description](#)
- [3 Safety](#)
- [4 Overvoltage protection](#)
- [5 Installation](#)
- [6 Accessories](#)
- [7 Documents / Resources](#)
  - [7.1 References](#)
- [8 Related Posts](#)

## Application

Performance floodlight with mounting box.  
For a variety of interior and exterior lighting applications.

## Product description

Luminaire made of aluminium alloy, aluminium and stainless steel BEGA Unidure® coating technology Colour graphite or silver Clear safety glass Silicone gasket Reflector surface made of pure aluminium BEGA Hybrid Optics®

Rotation range of floodlight 350°

Swivel range -30°/+90°

Mounting box with 2 fixing holes ø 6 mm · 85 mm spacing 2 cable entries for through-wiring of mains supply cable ø 7-10.5 mm, max. 5 G 1.5@ Connecting terminal 2.5@ with plug connection Earth conductor connection BEGA Ultimate Driver®

Complies with flicker requirements in accordance with IEEE 1789, DIN IEC/TR 63158, DIN IEC/TR 61547-1 LED power supply unit

220-240 V  0/50-60 Hz

DC 176-264 V

DALI-controllable


Number of DALI addresses: 1

Basic insulation is provided between the mains and control cables BEGA Thermal Control®

Temporary thermal regulation to protect temperature-sensitive components without switching off the luminaire

Safety class I Protection class IP 65 Dust-tight and protection against water jets Impact strength IK08

Protection against mechanical impacts < 5 joule

 – Conformity mark

Wind catching area: 0.057 m²

Weight: 6.2 kg

This product contains light sources of energy efficiency class(es) D

## Safety

The installation and operation of this luminaire are subject to national safety regulations.

Installation and commissioning may only be carried out by a qualified electrician.

The manufacturer accepts no liability for damage caused by improper use or installation.

If subsequent modifications are made to the luminaire, the person responsible for these modifications shall be considered the manufacturer.

## Overvoltage protection

The electronic components installed in the luminaire are protected against overvoltage in accordance with

DIN EN 61547.

To achieve an additional protection against e. g. transients, etc. we recommend separate overvoltage protection components.

You can find them on our website at [www.bega.com](http://www.bega.com).

The ideal protection of all electronic components installed in the luminaires is achieved by using bounce-free switching contacts such as an electronic relay (solid-state relay), e.g. BEGA 71 320.

## Installation

LED are high-quality electronic components!

Please avoid touching the light output opening of the LED directly during installation or relamping.

Undo hexagon socket head screw (wrench size 3 mm) up to the stop and disassemble the mounting plate.

Pass the power connecting cable through the cable entry in the mounting plate.

Note position of application of the mounting plate "arrow down".

Fix the mounting plate with enclosed or any other suitable fixing material onto the mounting surface.

Be sure to use the gasket rings supplied.

Make earth conductor connection.

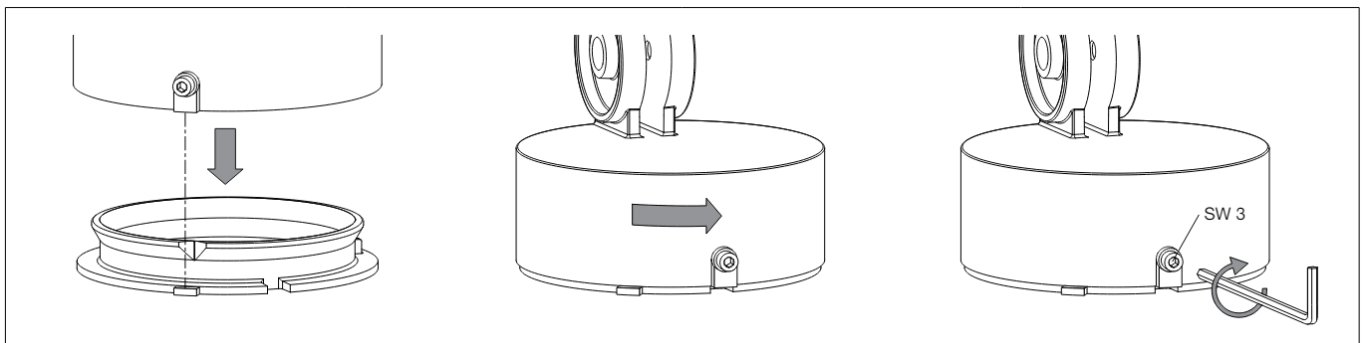
Push silicone sleeves over the lines and make electrical connection to terminal (plug connection).

For digital control please use the 2-pole plug connector DA, DA.

In case this connector is not used the luminaire will be operated at full light output.

Push plug into coupler as far as it will go.

Make sure that gasket is positioned correctly.



Place floodlight unit onto the mounting plate as displayed in the sketch, align and screw together firmly.

Adjustment of beam direction:

Undo joint screw (hexagon socket head wrench size 6 mm) and set the desired beam direction.

Tighten the joint screw.

Torque = 12 Nm.

<b>Lamp</b>	
Module connected wattage	71.1 W
Luminaire connected wattage	76 W
Rated temperature	ta = 25 °C
Ambient temperature	ta max = 40 °C
<b>85 135 K3</b>	
Module designation	LED-0442/930
Colour temperature	3000 K
Colour rendering index	CRI > 90
Module luminous flux	10550 lm
Luminaire luminous flux	7837 lm
Luminaire luminous efficiency	103,1 lm / W
<b>85 135 K4</b>	
Module designation	LED-0442/940
Colour temperature	4000 K
Colour rendering index	CRI > 90
Module luminous flux	10710 lm
Luminaire luminous flux	7956 lm
Luminaire luminous efficiency	104,7 lm / W

### Light technique

Symmetrical wide beam light distribution Half beam angle 27°

For special lighting applications, an optical filter can be used to change the symmetrical light cone into a flat beam light distribution.

### Cleaning · Maintenance

Clean luminaire regularly with solvent-free cleansers from dirt and deposits.

Do not use high pressure cleaners.

#### Maintenance

The connecting cable between mounting box and floodlight has to be inspected regarding obvious damages and has to be replaced by a qualified electrician only.

#### Please note:

Do not remove the desiccant bag from the luminaire housing.

It is needed to remove residual moisture.

#### Replacing the LED module

The designation of the LED module is noted on a separate label in the luminaire or on the underside of the specific LED module.

The light colour and light output of BEGA replacement modules correspond to those of the modules originally fitted. The module can be replaced by qualified persons using standard tools.

Disconnect the system.

Open the floodlight:

Undo locking pin (hexagon socket head wrench size 2.5 mm) on the back side of the floodlight housing.

Remove the trim ring along with the safety glass and reflector by twisting it counter- clockwise.

Replace LED module.

Please follow the installation instructions for the LED module.  
 Inspect and, if necessary, replace the luminaire gaskets.  
 Defective glass must be replaced.  
 Place trim ring with glass and reflector on the floodlight housing in such a way that the notches in the trim ring and floodlight housing align on top to each other.  
 Twist on the trim ring clockwise as far as the stop. Tighten locking pin.

## Accessories

- 71 292 Optical filter flat beam
- 71 334 Shield
- 71 339 Cylindrical shield

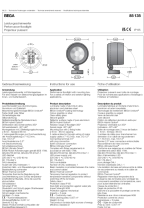
For the accessories a separate instructions for use can be provided upon request.

## Spares

Trim ring graphite with glass	25 000 285
Trim ring silver with glass	25 000 286
LED power supply unit	DEV-0356/1400i
LED module 3000 K	LED-0442/930
LED module 4000 K	LED-0442/940
Reflector	75 005 020
Gasket housing	83 001 780
Gasket mounting box	83 001 838
Gasket trim ring	83 002 225

BEGA Gantenbrink-Leuchten KG · Postfach 31 60 · 58689 Menden · [info@bega.com](mailto:info@bega.com) · [www.bega.com](http://www.bega.com)

## Documents / Resources

	<p><b><a href="#">BEGA 85135 Performance Floodlight</a></b> [pdf] Instruction Manual        85135, 85135 Performance Floodlight, Performance Floodlight, Floodlight</p>
---	---

## References

- BEGA [BEGA · Das gute Licht.](#)
- [User Manual](#)

[Manuals+.](#) [Privacy Policy](#)

This website is an independent publication and is neither affiliated with nor endorsed by any of the trademark owners. The "Bluetooth®" word mark and logos are registered trademarks owned by Bluetooth SIG, Inc. The "Wi-Fi®" word mark and logos are registered trademarks owned by the Wi-Fi Alliance. Any use of these marks on this website does not imply any affiliation with or endorsement.