

BEGA
85132K3
Performance
Floodlight



BEGA 85132K3 Performance Floodlight Instruction Manual

[Home](#) » [BEGA](#) » BEGA 85132K3 Performance Floodlight Instruction Manual 

Contents

- [1 BEGA 85132K3 Performance Floodlight](#)
- [2 Product Information](#)
- [3 Product Usage Instructions](#)
- [4 Application](#)
- [5 Product Description](#)
- [6 Light technique](#)
- [7 Lamp](#)
- [8 Safety](#)
- [9 Overvoltage protection](#)
- [10 Installation](#)
- [11 Dimension](#)
- [12 Cleaning And Maintenance](#)
- [13 Replacing the LED module](#)
- [14 Accessories](#)
- [15 Spares Parts](#)
- [16 Documents / Resources](#)
 - [16.1 References](#)
- [17 Related Posts](#)

BEGA

BEGA 85132K3 Performance Floodlight



Product Information

Specifications:

- **Product Name:** Performance Floodlight
- **Model Number:** 85 132
- **Lamp Module Connected Wattage:** 24.1 W
- **Luminaire Connected Wattage:** 26.8 W
- **Color Temperature:** 3000 K or 4000 K
- **Colour Rendering Index (CRI):** > 90
- **Luminaire Luminous Flux:** Up to 2500 lm
- **Luminaire Luminous Efficiency:** Up to 93.3 lm/W

Product Usage Instructions

Safety Information:

The installation and operation of this luminaire are subject to national safety regulations. Only a qualified electrician should carry out the installation and commissioning. The manufacturer is not liable for damage due to improper use or installation. Any modifications should be done by qualified personnel.

Overvoltage Protection:

The electronic components in the luminaire are protected against overvoltage according to DIN EN 61547. For additional protection against transients, separate overvoltage protection components are recommended. These components can be found on the manufacturer's website.

Installation:

- LED components are high-quality; avoid touching the LED's light output opening directly during installation or relamping.
- To install, place the floodlight unit on the mounting plate as shown in the sketch, align it, and securely screw it

together.

- For adjusting the beam direction, undo the joint screw using a hexagon socket head wrench size 5 mm, set the desired beam direction, and tighten the joint screw to a torque of 7 Nm.

FAQ:

- **Q: Can I install this floodlight outdoors?**

A: Yes, this performance floodlight is suitable for both interior and exterior lighting applications.

- **Q: What is the recommended method for protecting electronic components in the luminaire?**


A: To protect the electronic components, use bounce-free switching contacts like an electronic relay (solid-state relay).

Application

- Performance floodlight with mounting box.
- For a variety of interior and exterior lighting applications.

Product Description

- Luminaire made of aluminum alloy, aluminum, and stainless steel
- BEGA Unidure® coating technology
- Color graphite or silver
- Clear safety glass
- Silicone gasket
- The reflector surface is made of pure aluminum
- BEGA Hybrid Optics®
- The rotation range of floodlight is 350°
- Swivel range -25°/+90°
- Mounting box with 2 fixing holes \varnothing 4.8 mm · 67 mm spacing 2 cable entries for through-wiring of mains supply cable \varnothing 7-10.5 mm, max. 5 G 1.5@
- Connecting terminal 2.5@ with plug connection
- Earth conductor connection
- BEGA Ultimate Driver®
- Complies with flicker requirements by IEEE 1789,
- DIN IEC/TR 63158, DIN IEC/TR 61547-1
- LED power supply unit 220-240 V x 0/50-60 Hz
- DC 176-264 V
- DALI-controllable
- Number of DALI addresses: 1
- Basic insulation is provided between the mains and control cables
- BEGA Thermal Control®
- Temporary thermal regulation to protect temperature-sensitive components without switching off the luminaire
- Safety class I
- Protection class IP 65

- Dust-tight and protection against water jets
-  – Conformity mark
- Wind catching area: 0.023 m²
- Weight: 2.2 kg
- This product contains light sources of energy efficiency class(es) E

Light technique

- Symmetrical wide beam light distribution Half beam angle 24°
- For special lighting applications, an optical filter can be used to change the symmetrical light cone into a flat beam light distribution.

Lamp

- Module connected wattage 24.1 W
- Luminaire connected wattage 26.8 W
- Rated temperature $t_a = 25\text{ °C}$
- Ambient temperature $t_a \text{ max} = 40\text{ °C}$

85 132 K3

- Module designation LED-0800/930
- Color temperature 3000 K
- Color rendering index CRI > 90
- Module luminous flux 3350 lm
- Luminaire luminous flux 2463 lm
- Luminaire luminous efficiency 91,9 lm / W

85 132 K4

- Module designation LED-0800/940
- Color temperature 4000 K
- Color rendering index CRI > 90
- Module luminous flux 3400 lm
- Luminaire luminous flux 2500 lm
- Luminaire luminous efficiency 93,3 lm/W

Safety


- The installation and operation of this luminaire are subject to national safety regulations.
- Installation and commissioning may only be carried out by a qualified electrician.
- The manufacturer accepts no liability for damage caused by improper use or installation.
- If subsequent modifications are made to the luminaire, the person responsible for these modifications shall be considered the manufacturer.

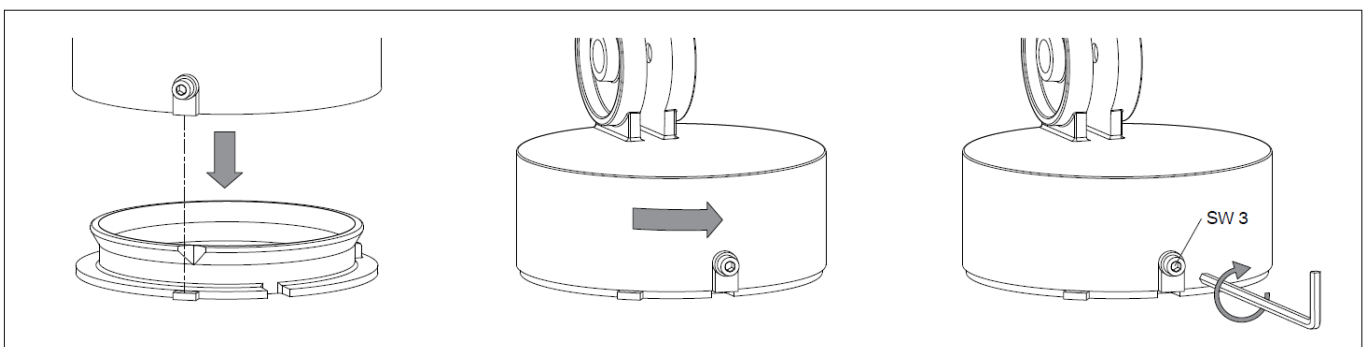
Overvoltage protection

- The electronic components installed in the luminaire are protected against overvoltage under DIN EN 61547.
- To achieve additional protection against e. g. transients, etc. we recommend separate overvoltage protection components.
- You can find them on our website at www.bega.com.
- The ideal protection of all electronic components installed in the luminaires is achieved by using bounce-free switching contacts such as an electronic relay (solid-state relay), e.g. BEGA 71 320.

Installation

LEDs are high-quality electronic components!

- Please avoid touching the light output opening of the LED directly during installation or relamping.
- Undo the hexagon socket head screw (wrench size 3 mm) up to the stop and disassemble the mounting plate.
- Pass the power connecting cable through the cable entry in the mounting plate.
- Note the position of application of the mounting plate “arrow down”.
- Fix the mounting plate with enclosed or any other suitable fixing material onto the mounting surface.
- Be sure to use the gasket rings supplied.
- Make an earth conductor connection.
- Push silicone sleeves over the lines and make an electrical connection to the terminal (plug connection).
- For digital control please use the 2-pole plug connector DA, DA.
- In case this connector is not used the luminaire will be operated at full light output.
- Push the plug into the coupler as far as it will go.
- Connect the floodlight unit's green and yellow protective earth conductor to the terminal marked  in the mounting plate.
- Make sure that the gasket is positioned correctly.



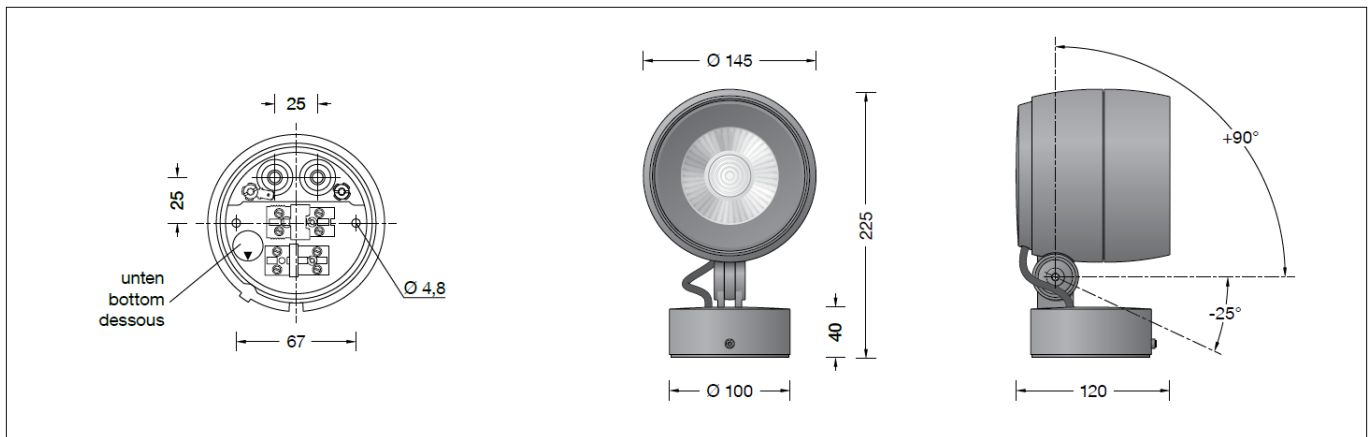
- Place the floodlight unit onto the mounting plate as displayed in the sketch, and align and screw it together firmly.

Adjustment of beam direction:

- Undo the joint screw (hexagon socket head wrench size 5 mm) and set the desired beam direction.
- Tighten the joint screw.

- Torque = 7 Nm.

Dimension



Cleaning And Maintenance

- Clean the luminaire regularly with solvent-free cleansers from dirt and deposits.
- Do not use high-pressure cleaners.

Maintenance

The connecting cable between the mounting box and the floodlight has to be inspected for obvious damages and has to be replaced by a qualified electrician only.

Please note:

- Do not remove the desiccant bag from the luminaire housing.
- It is needed to remove residual moisture.

Replacing the LED module

- The designation of the LED module is noted on a separate label in the luminaire or on the underside of the specific LED module.
- The light color and light output of BEGA replacement modules correspond to those of the modules originally fitted. The module can be replaced by qualified persons using standard tools.
- Disconnect the system.

Open the floodlight:

- Undo the locking pin (hexagon socket head wrench size 2.5 mm) on the back side of the floodlight housing.
- Remove the trim ring along with the safety glass and reflector by twisting it counterclockwise.
- Replace the LED module.
- Please follow the installation instructions for the LED module.
- Inspect and, if necessary, replace the luminaire gaskets.
- The defective glass must be replaced.
- Place the trim ring with glass and reflector on the floodlight housing in such a way that the notches in the trim

ring and floodlight housing align on top of each other.

- Twist on the trim ring clockwise as far as the stop. Tighten the locking pin.

Accessories

- 71 290 Optical filter flat beam
- 71 332 Shield
- 71 337 Cylindrical shield


For the accessories, separate instructions for use can be provided upon request.

Spares Parts

- Trim ring graphite with glass 25 000 277
- Trim ring silver with glass 25 000 278
- LED power supply unit DEV-0353/700
- LED module 3000 K LED-0800/930
- LED module 4000 K LED-0800/940
- Reflector 75 005 074
- Gasket housing 83 000 521
- Gasket mounting box 83 001 839
- Gasket Abschlussring 83 002 222

BEGA Gantenbrink-Leuchten KG · Postfach 31 60 · 58689 Menden · info@bega.com · www.bega.com.

Documents / Resources

	<p>BEGA 85132K3 Performance Floodlight [pdf] Instruction Manual 85132K3, 85132K4, 85132K3 Performance Floodlight, 85132K3, Performance Floodlight, Flood light</p>
---	---

References

- BEGA [BEGA · Das gute Licht.](#)
- [User Manual](#)

Manuals+, Privacy Policy

This website is an independent publication and is neither affiliated with nor endorsed by any of the trademark owners. The "Bluetooth®" word mark and logos are registered trademarks owned by Bluetooth SIG, Inc. The "Wi-Fi®" word mark and logos are registered trademarks owned by the Wi-Fi Alliance. Any use of these marks on this website does not imply any affiliation with or endorsement.