



BEGA 85127K3 Performance Flood Light Instruction Manual

[Home](#) » [BEGA](#) » BEGA 85127K3 Performance Flood Light Instruction Manual 

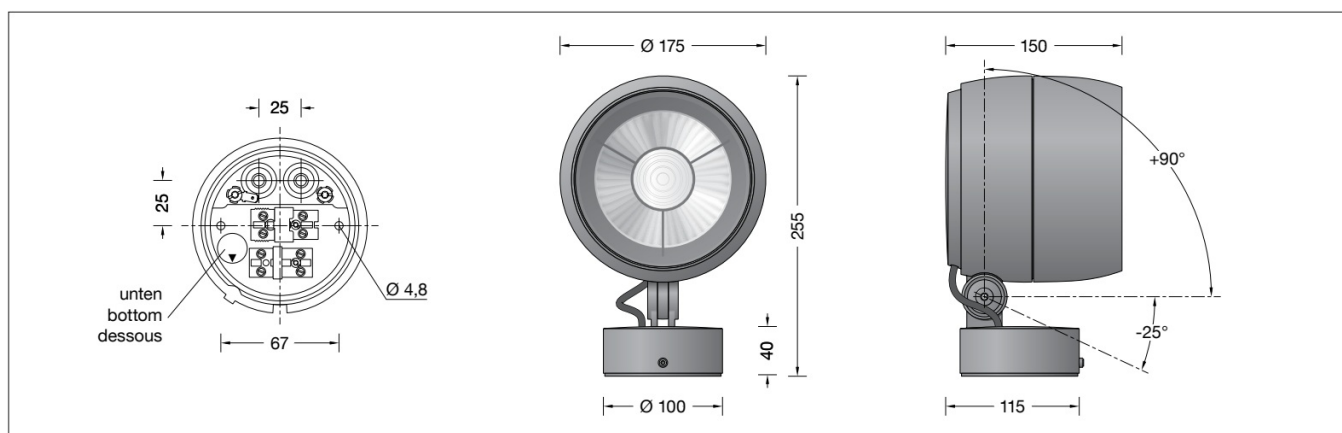
BEGA 85127K3 Performance Flood Light



Contents

- 1 Dimensions
- 2 Application
- 3 Product Description
- 4 Lighting Technology
- 5 Lamp
- 6 85 127K3
- 7 85 127K4
- 8 Safety
- 9 Overvoltage protection
- 10 Installation
- 11 Cleaning · Maintenance
- 12 Maintenance
- 13 Replacing the LED module
- 14 Accessories
- 15 Spares
- 16 Customer Support
- 17 Documents / Resources
 - 17.1 References
- 18 Related Posts

Dimensions





Application

Performance floodlight with mounting box. For a variety of interior and exterior lighting applications.

Product Description

Luminaire made of aluminium alloy,
aluminium and stainless steel
BEGA Unidure® coating technology
Colour graphite or silver
Clear safety glass
Silicone gasket
Reflector surface made of pure aluminium
BEGA Hybrid Optics®
Rotation range of floodlight 350°

Swivel range -25°/+90°
Mounting box with 2 fixing holes
ø 4.8mm · 67mm spacing
2 cable entries for through-wiring of mains
supply cable ø 7-10.5mm, max. 5G1.5@
Connecting terminal 2.5@
with plug connection
Earth conductor connection
BEGA Ultimate Driver®
Complies with flicker requirements in
accordance with IEEE 1789,
DIN IEC/TR 63158, DIN IEC/TR 61547-1
LED power supply unit
220-240 V  x 0/50-60 Hz
DC 176-264 V
DALI-controllable
Number of DALI addresses: 1
Basic insulation is provided between the mains
and control cables
BEGA Thermal Control®
Temporary thermal regulation to protect
temperature-sensitive components without
switching off the luminaire
Safety class I
Protection class IP 65
Dust-tight and protection against water jets
Impact strength IK06
Protection against mechanical
impacts < 1 joule
 – Conformity mark
Wind catching area: 0.031 m²
Weight: 3.0 kg
This product contains light sources of energy
efficiency class(es) E

Lighting Technology

Focused light distribution with minimal diffuse light percentage.

Half beam angle 10°

For special lighting applications, an optical filter can be used to change the symmetrical light cone into a flat beam light distribution.

Lamp

Module connected wattage 37.5 W

Luminaire connected wattage 40.5 W

Rated temperature $t_a=25\text{ }^{\circ}\text{C}$

Ambient temperature $t_a\text{ max}=35\text{ }^{\circ}\text{C}$

85 127K3

Module designation LED-0779/930

Colour temperature 3000 K

Colour rendering index CRI >90

Module luminous flux 4855 lm

Luminaire luminous flux 2712 lm

Luminaire luminous efficiency 67 lm/W

85 127K4

Module designation LED-0779/940

Colour temperature 4000 K

Colour rendering index CRI >90

Module luminous flux 4930 lm

Luminaire luminous flux 2754 lm

Luminaire luminous efficiency 68 lm/W

Safety

The installation and operation of this luminaire are subject to national safety regulations.

Installation and commissioning may only be carried out by a qualified electrician.

The manufacturer accepts no liability for damage caused by improper use or installation.

If subsequent modifications are made to the luminaire, the person responsible for these modifications shall be considered the manufacturer.

Overvoltage protection

The electronic components installed in the luminaire are protected against overvoltage in accordance with DIN EN 61547.

To achieve an additional protection against e.g. transients, etc. we recommend separate overvoltage protection components.

You can find them on our website at www.bega.com.

The ideal protection of all electronic components installed in the luminaires is achieved by using bounce-free switching contacts such as an electronic relay (solid-state relay), e.g. BEGA 71320.

Installation

Undo hexagon socket head screw (wrench size 3mm) up to the stop and disassemble the mounting plate.

Pass the power connecting cable through the cable entry in the mounting plate.

Note position of application of the mounting plate "arrow down".

Fix the mounting plate with enclosed or any other suitable fixing material onto the mounting surface.

Be sure to use the gasket rings supplied.

Make earth conductor connection.

Push silicone sleeves over the lines and make electrical connection to terminal (plug connection).

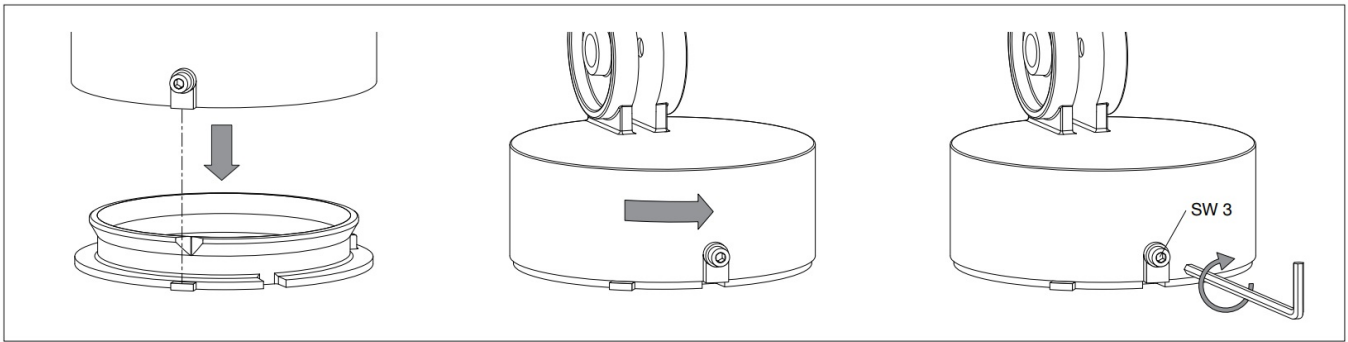
For digital control please use the 2-pole plug connector DA, DA.

In case this connector is not used the luminaire will be operated at full light output.

Push plug into coupler as far as it will go.

Connect the floodlight unit's green and yellow protective earth conductor to the terminal marked 1 in the mounting plate.

Make sure that gasket is positioned correctly.



Place floodlight unit onto the mounting plate as displayed in the sketch, align and screw together firmly.

Adjustment of beam direction:

Undo joint screw (hexagon socket head wrench size 5 mm) and set the desired beam direction.

Tighten the joint screw.

Torque = 7Nm.

Cleaning · Maintenance

Clean luminaire regularly with solvent-free cleansers from dirt and deposits.

Do not use high pressure cleaners.

Maintenance

The connecting cable between mounting box and floodlight has to be inspected regarding obvious damages and has to be replaced by a qualified electrician only

Please note:

Do not remove the desiccant bag from the luminaire housing.

It is needed to remove residual moisture.

Replacing the LED module

The designation of the LED module is noted on a separate label in the luminaire or on the underside of the specific LED module.

The light colour and light output of BEGA replacement modules correspond to those of the modules originally fitted. The module can be replaced by qualified persons using standard tools.

Disconnect the system.

Open the floodlight:

Undo locking pin (hexagon socket head wrench size 2.5 mm) on the back side of the floodlight housing.

Remove the trim ring along with the safety glass and reflector by twisting it counterclockwise. Replace LED module.

Please follow the installation instructions for the LED module.

Inspect and, if necessary, replace the luminaire gaskets.

Defective glass must be replaced.

Place trim ring with glass and reflector on the floodlight housing in such a way that the notches in the trim ring and floodlight housing align on top to each other.

Twist on the trim ring clockwise as far as the stop. Tighten locking pin.

Accessories

71 **291** Optical filter flat beam
71**333** Shield
71 **338** Cylindrical shield

For the accessories a separate instructions for use can be provided upon request.

Spares

Trim ring graphite with glass 25 000 254
Trim ring silver with glass 25 000 255
LED power supply unit DEV-0270/1050i
LED module 3000 K LED-0779/930
LED module 4000 K LED-0779/940
Reflector 75 005 100
Gasket housing 83 001 579
Gasket mounting box 83 001 839
Gasket trim ring 83 002 306.

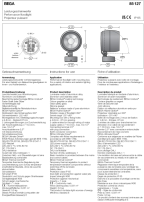
Customer Support

UK
CA C € IP 65

4/4 BEGA Gantenbrink-Leuchten KG · Postfach 3160 · 58689 Menden · info@bega.com · www.bega.com

BEGA

Documents / Resources

| | |
|---|---|
|  | <p>BEGA 85127K3 Performance Flood Light [pdf] Instruction Manual 85127K3 Performance Flood Light, 85127K3, Performance Flood Light, Flood Light, Light</p> |
|---|---|

References

- BEGA [BEGA · Das gute Licht.](#)
- [User Manual](#)

[Manuals+](#), [Privacy Policy](#)

This website is an independent publication and is neither affiliated with nor endorsed by any of the trademark owners. The "Bluetooth®" word mark and logos are registered trademarks owned by Bluetooth SIG, Inc. The "Wi-Fi®" word mark and logos are registered trademarks owned by the Wi-Fi Alliance. Any use of these marks on this website does not imply any affiliation with or endorsement.