



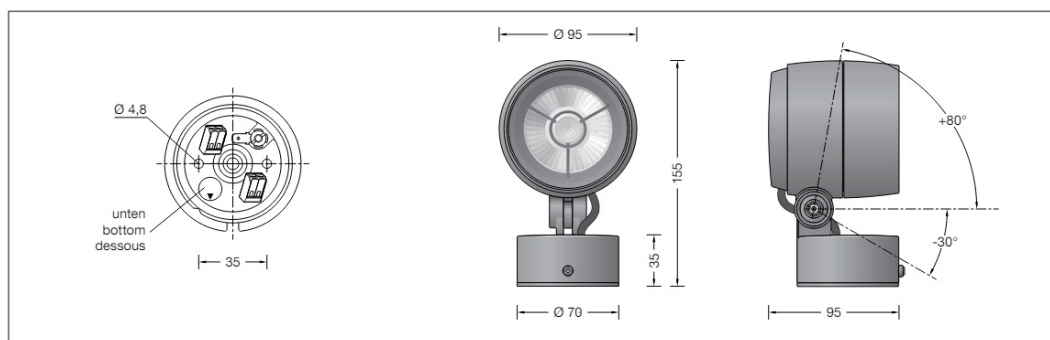
## BEGA 85124K3 Performance Floodlight User Manual

[Home](#) » [BEGA](#) » BEGA 85124K3 Performance Floodlight User Manual 

### BEGA 85124K3 Performance Floodlight User Manual



**Performance floodlight**



## Instructions for use

### Application

Performance floodlight with mounting box. For a variety of interior and exterior lighting applications. Product description Luminaire made of aluminium alloy, aluminium and stainless steel BEGA Unidure® coating technology Colour graphite or silver Clear safety glass Silicone gasket Reflector surface made of pure aluminium BEGA Hybrid Optics® Rotation range of floodlight 350° Swivel range -30°/+80° Mounting box with 2 fixing holes  $\varnothing$  4.8mm · 35mm spacing 1 cable entry for mains supply cable up to  $\varnothing$  10,5mm Connecting terminals 2.5@ Earth conductor connection BEGA Ultimate Driver® Complies with flicker requirements in accordance with IEEE 1789, DIN IEC/TR 63158, DIN IEC/TR 61547-1 LED power supply unit 220-240 V x 0/50-60 Hz DC 176-280 V BEGA Thermal Control® Temporary thermal regulation to protect temperature-sensitive components without switching off the luminaire Safety class I Protection class IP 65 Dust-tight and protection against water jets Impact strength IK07 Protection against mechanical impacts < 2 joule



Conformity mark Wind catching area: 0.01 m<sup>2</sup>

**Weight:** 0.85 kg

This product contains light sources of energy efficiency class(es) E

### Lighting technology

Focused light distribution with minimal diffuse light percentage. Half beam angle 9°

For special lighting applications, an optical filter can be used to change the symmetrical light cone into a flat beam light distribution.

### Lamp

Module connected wattage	8.8 W
Luminaire connected wattage	10 W
Rated temperature	ta=25 °C
Ambient temperature	ta max=50 °C
<b>85 124K3</b>	
Module designation	LED-1268/930
Colour temperature	3000 K
Colour rendering index	CRI >90
Module luminous flux	1080 lm
Luminaire luminous flux	528 lm
Luminaire luminous efficiency	52,8 lm/W
<b>85 124K4</b>	
Module designation	LED-1268/940
Colour temperature	4000 K
Colour rendering index	CRI >90
Module luminous flux	1140 lm
Luminaire luminous flux	557 lm
Luminaire luminous efficiency	55,7 lm/W

### Safety

The installation and operation of this luminaire are subject to national safety regulations. Installation and commissioning may only be carried out by a qualified electrician. The manufacturer accepts no liability for damage caused by improper use or installation. If subsequent modifications are made to the luminaire, the person responsible for these modifications shall be considered the manufacturer.

### Overvoltage protection

The electronic components installed in the luminaire are protected against overvoltage in accordance with DIN EN 61547.

To achieve an additional protection against e.g. transients, etc. we recommend separate overvoltage protection components. You can find them on our website at [www.bega.com](http://www.bega.com).

The ideal protection of all electronic components installed in the luminaires is achieved by using bounce-free switching contacts such as an electronic relay (solid-state relay), e.g. BEGA 71320.

### Installation


LED are high-quality electronic components! Please avoid touching the light output opening of the LED directly during installation or relamping.

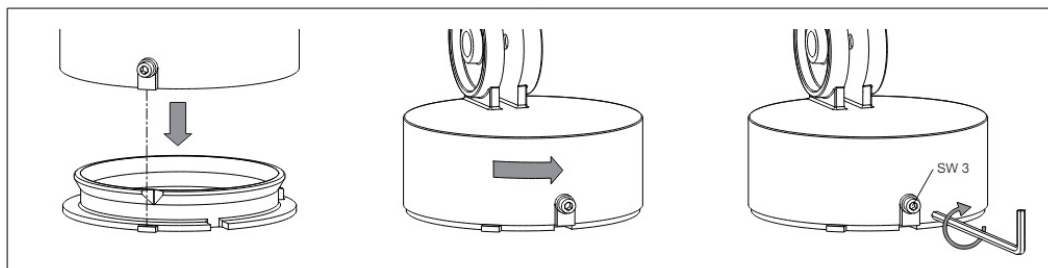
Undo hexagon socket head screw (wrench size 3mm) up to the stop and disassemble the mounting plate.

Pass the power connecting cable through the cable entry in the mounting plate. Note position of application of the mounting plate "arrow down".

Fix the mounting plate with enclosed or any other suitable fixing material onto the mounting surface.

Be sure to use the gasket rings supplied. Make earth conductor connection. Push silicone sleeves over the lines and make electrical connection. Connect the floodlight unit's green and yellow protective earth conductor to the

terminal marked  1 in the mounting plate. Make sure that gasket is positioned correctly.



Place floodlight unit onto the mounting plate as displayed in the sketch, align and screw together firmly.

**Adjustment of beam direction:**

Undo joint screw (hexagon socket head wrench size 3 mm) and set the desired beam direction.

**Tighten the joint screw.**

Torque = 2.5Nm.

**Cleaning · Maintenance**

Clean luminaire regularly with solvent-free cleansers from dirt and deposits. Do not use high pressure cleaners.

**Maintenance**

The connecting cable between mounting box and floodlight has to be inspected regarding obvious damages and has to be replaced by a qualified electrician only.

**Please note:**

Do not remove the desiccant bag from the luminaire housing. It is needed to remove residual moisture.

**Replacing the LED module**

The designation of the LED module is noted on a separate label in the luminaire or on the underside of the specific LED module. The light colour and light output of BEGA replacement modules correspond to those of the modules originally fitted. The replacement can be carried out by a qualified person using standard tools. Disconnect the system from the power supply. Open the floodlight: Remove the trim ring along with the safety glass and reflector by twisting it anti-clockwise. Replace LED module. Please follow the installation instructions for the LED module. Inspect and, if necessary, replace the luminaire gaskets. Defective glass must be replaced. Place the trim ring with glass and reflector on the floodlight housing so that the notches in the trim ring and luminaire housing sit on top of each other. Twist on the trim ring clockwise as far as the stop

**Accessories**

**71 288** Optical filter flat beam

**71330** Shield

**71 335** Cylindrical shield

For the accessories a separate instructions for use can be provided upon request.

# BEGA

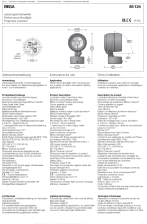
## Contents

### [1 Documents / Resources](#)

#### [1.1 References](#)

### [2 Related Posts](#)

## Documents / Resources

	<p><a href="#">BEGA 85124K3 Performance Floodlight</a> [pdf] User Manual</p> <p>85124K3 Performance Floodlight, 85124K3, Performance Floodlight, Floodlight</p>
---	---

## References

- BEGA [BEGA · Das gute Licht.](#)
- [User Manual](#)

[Manuals+](#), [Privacy Policy](#)

This website is an independent publication and is neither affiliated with nor endorsed by any of the trademark owners. The "Bluetooth®" word mark and logos are registered trademarks owned by Bluetooth SIG, Inc. The "Wi-Fi®" word mark and logos are registered trademarks owned by the Wi-Fi Alliance. Any use of these marks on this website does not imply any affiliation with or endorsement.