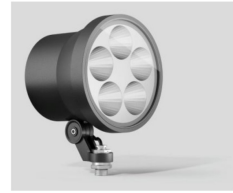


## **BEGA**

**85 233 Performance  
Floodlight With Minimal  
Diffuse Light Percentage**



# **BEGA 85 233 Performance Floodlight With Minimal Diffuse Light Percentage Instruction Manual**

[Home](#) » [BEGA](#) » **BEGA 85 233 Performance Floodlight With Minimal Diffuse Light Percentage Instruction Manual** 

## **Contents**

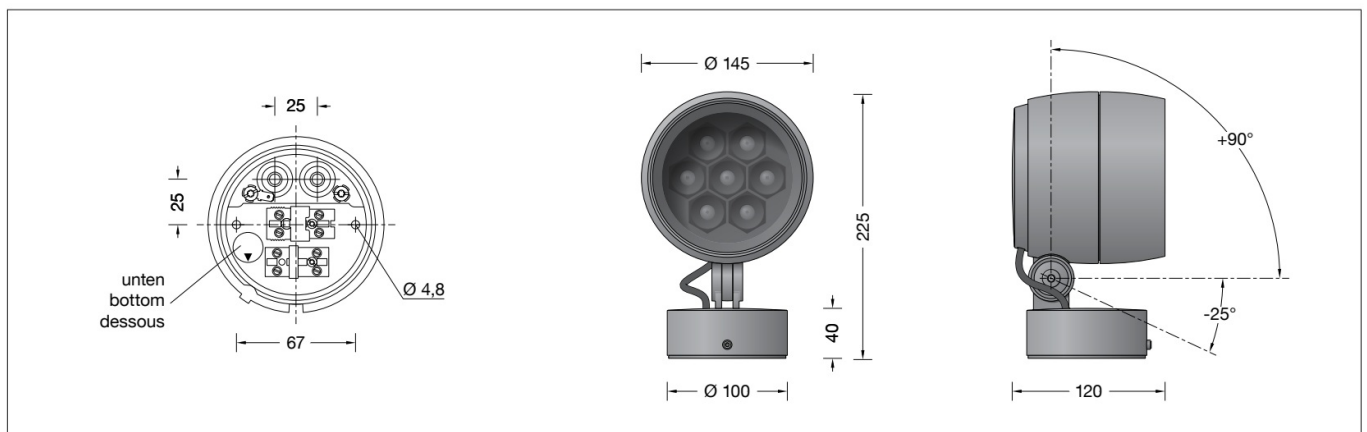
- [1 BEGA 85 233 Performance Floodlight With Minimal Diffuse Light Percentage](#)
- [2 instructions for use](#)
- [3 Product Description](#)
- [4 Overvoltage protection](#)
- [5 Installation](#)
- [6 Cleaning · Maintenance](#)
- [7 Accessories](#)
- [8 Documents / Resources](#)
  - [8.1 References](#)
- [9 Related Posts](#)

# **BEGA**

**BEGA 85 233 Performance Floodlight With Minimal Diffuse Light Percentage**



Performance floodlight with minimal diffuse light percentage.



## instructions for use

### Application

- Performance floodlight with mounting box.
- For a variety of interior and exterior lighting applications.
- BEGA Ultradark Optics® offers maximum of illumination and eye comfort due to a minimized diffuse light percentage and highly efficient glare suppression.

### Product Description

- Luminaire made of aluminum alloy, aluminum, and stainless steel
- BEGA Unidure® coating technology
- Color graphite or silver

- Matt safety glass
- Internal louvers and polymer lens
- BEGA Ultradark Optics®
- Louvers and the interior surface of the anti-glare ring with maximum light-absorbing ultra-black nano-coating
- The rotation range of floodlight is 350°
- Swivel range -25°/+90°
- Mounting box with 2 fixing holes  $\varnothing$  4.8mm · 67mm spacing
- 2 cable entries for through-wiring of mains supply cable  $\varnothing$  7-10.5mm, max. 5G1.5@
- Connecting terminal 2.5@ with plug connection
- Earth conductor connection
- BEGA Ultimate Driver®
- Complies with flicker requirements under IEEE 1789,
- DIN IEC/TR 63158, DIN IEC/TR 61547-1
- LED power supply unit 220-240 V x 0/50-60 Hz DC 176-264 V
- DALI-controllable
- Number of DALI addresses: 1
- Basic insulation is provided between the mains and control cables
- BEGA Thermal Control®
- Temporary thermal regulation to protect temperature-sensitive components without switching off the luminaire
- Safety class I
- Protection class IP 65
- Dust-tight and protection against water jets
- **CE** – Conformity mark
- Wind catching area: 0.023 m<sup>2</sup>
- This product contains light sources of energy efficiency class(es) E, F

### Safety

The installation and operation of this luminaire are subject to national safety regulations. Installation and commissioning may only be carried out by a qualified electrician. The manufacturer accepts no liability for damage caused by improper use or installation.

If subsequent modifications are made to the luminaire, the person responsible for these modifications shall be considered the manufacturer.

### Overvoltage protection

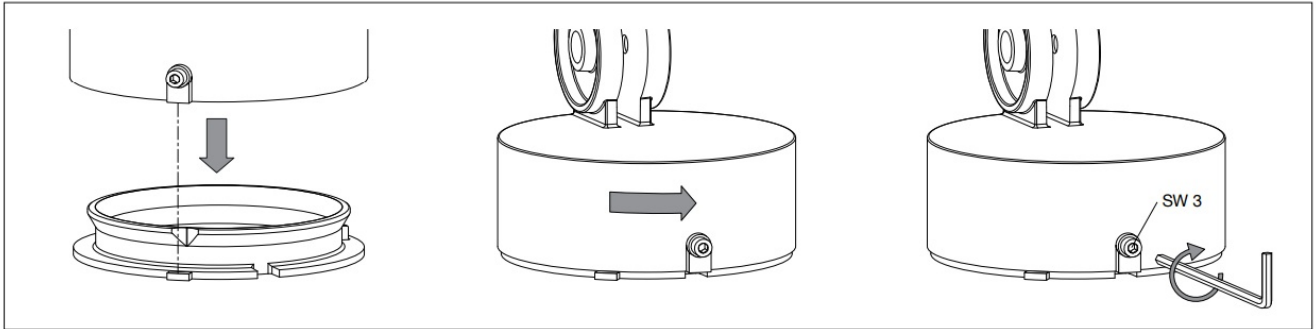
- The electronic components installed in the luminaire are protected against overvoltage by DIN EN 61547.
- To achieve additional protection against e.g. transients, etc. we recommend separate overvoltage protection components.
- You can find them on our website at [www.bega.com](http://www.bega.com).
- The ideal protection of all electronic components installed in the luminaires is achieved by using bounce-free switching contacts such as an electronic relay (solid-state relay), e.g.

### Please note

Contact with the inner surface of the luminaire reflector should be avoided to permanently protect the special stray light minimising properties of the nano-coating.

## Installation

- LEDs are high-quality electronic components! Please avoid touching the light output opening of the LED directly during installation or relamping.
- Undo the hexagon socket head screws (wrench size 3 mm) at the mounting box and remove the mounting plate.



- Disconnect the earth conductor connection from the plug connection.
- Pass the power connecting cable through the cable entry in the mounting plate.
- Note the position of application of the mounting plate “arrow down”.
- Fix the mounting plate with enclosed or any other suitable fixing material onto the mounting surface.
- Be sure to use the gasket rings supplied.
- Make an earth conductor connection.
- Push silicone sleeves over the lines and make an electrical connection to the terminal (plug connection).
- For digital control please use the 2-pole plug connector DA, DA.
- In case this connector is not used the luminaire will be operated at full light output.
- Push the plug into the coupler as far as it will go.
- Connect the floodlight unit's green and yellow protective earth conductor to the terminal marked 1 in the mounting plate.
- Make sure that the gasket is positioned correctly.
- Place the floodlight unit onto the mounting plate as displayed in the sketch, and align and screw it together firmly.

## Adjustment of beam direction

Undo joint screw (hexagon socket head wrench size 5 mm) and set the desired beam direction. Tighten the joint screw.

- Torque = 7Nm.

## Lamp

- Module connected wattage 18.3 W
- Luminaire connected wattage 20.5 W
- Rated temperature  $t_a=25\text{ }^{\circ}\text{C}$
- Service life criteria 50000 h/L70

**85 233K3**

- Module designation LED-1254/930
- Color temperature 3000 K
- Color rendering index CRI >90
- Module luminous flux 2190 lm
- Luminaire luminous flux 1098 lm
- Luminaire luminous efficiency 53,6 lm/W

## **85 233K4**

- Module designation LED-1254/940
- Color temperature 4000 K
- Color rendering index CRI >90
- Module luminous flux 2375 lm
- Luminaire luminous flux 1190 lm
- Luminaire luminous efficiency 58 lm/W

## **Lighting technology**

- Symmetrically focused broad spread
- light distribution with minimal diffuse light percentage.
- Half beam angle 56°

## **Cleaning · Maintenance**

Clean the luminaire regularly with solvent-free cleansers from dirt and deposits. Do not use high-pressure cleaners.

### **Maintenance**

The connecting cable between the mounting box and floodlight has to be inspected for obvious damages and has to be replaced by a qualified electrician only.

### **Replacing the LED module**

The designation of the LED module is noted on a separate label in the luminaire or on the underside of the specific LED module. The light color and light output of BEGA replacement modules correspond to those of the modules originally fitted. The module can be replaced by a qualified person using commercially available tools. Disconnect the system from the power supply.

### **Open the floodlight:**

Loosen the locking pin (hexagon socket wrench SW2.5) on the back of the floodlight housing. Remove the trim ring along with the safety glass and reflector by twisting it anti-clockwise.

### **Please note**

Contact with the inner surfaces of the louvers and luminaire reflector should be avoided to permanently protect the special stray light-minimizing properties of the nano-coating. Grasp the louvers from the outside and lift them out. Loosen the three mounting screws (Torx drive T20) and lift the lens holder (with the loosely inserted lenses) upward horizontally out of the housing.

### **Replace the LED module**

Please follow the installation instructions for the LED module. Install in reverse order. When installing the lens

holder, make sure that the LED connecting cable is not pinched. Inspect and, if necessary, replace the luminaire gaskets. The defective glass must be replaced. Place the trim ring with glass and reflector on the floodlight housing so that the notches in the trim ring and luminaire housing sit on top of each other. Twist on the trim ring clockwise as far as the stop. Screw in the locking pin.

## Accessories

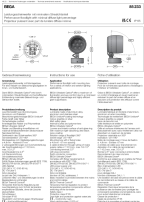
- 71332 Shield
- 71 337 Cylindrical shield
- For the accessories separate instructions
- for use can be provided upon request.

## Spares

- Spare glass internal 14 001 631
- Trim ring graphite with glass 25 000 277
- Trim ring silver with glass 25 000 278
- LED power supply unit DEV-0485/900i
- LED module 3000 K LED-1254/930
- LED module 4000 K LED-1254/940
- Gasket housing 83 000 521
- Gasket mounting box 83 001 839
- Gasket end ring 83 001 952

BEGA Gantenbrink-Leuchten KG · Postfach 3160 · 58689 Menden · [info@bega.com](mailto:info@bega.com) · [www.bega.com](http://www.bega.com)

## Documents / Resources

	<p><b><a href="#">BEGA 85 233 Performance Floodlight With Minimal Diffuse Light Percentage</a></b> [pdf] Instruction Manual</p> <p>85 233, 85 233 Performance Floodlight With Minimal Diffuse Light Percentage, Performance Floodlight With Minimal Diffuse Light Percentage, Floodlight With Minimal Diffuse Light Percentage, Minimal Diffuse Light Percentage, Diffuse Light Percentage, Light Percentage, Percentage</p>
---	--

## References

- BEGA **[BEGA · Das gute Licht.](#)**
- **[User Manual](#)**

[Manuals+](#) · [Privacy Policy](#)

This website is an independent publication and is neither affiliated with nor endorsed by any of the trademark owners. The "Bluetooth®" word mark and logos are registered trademarks owned by Bluetooth SIG, Inc. The "Wi-Fi®" word mark and logos are registered trademarks owned by the Wi-Fi Alliance. Any use of these marks on this website does not imply any affiliation with or endorsement.