

BEGA 50 142.2
TECHNICAL
AMENDMENTS
RESERVED



BEGA 50 142.2 Technical Amendments Reserved Instruction Manual

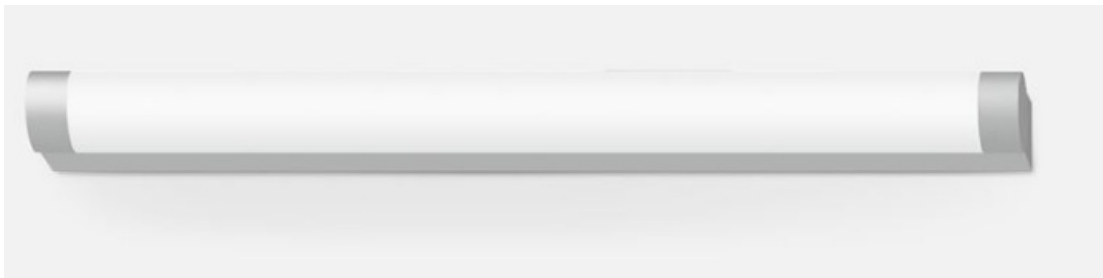
[Home](#) » [BEGA](#) » BEGA 50 142.2 Technical Amendments Reserved Instruction Manual 

Contents

- [1 BEGA 50 142.2 Technical Amendments Reserved](#)
- [2 Product Usage Instructions](#)
- [3 Instructions for use](#)
- [4 Product Description](#)
- [5 Overvoltage protection](#)
- [6 Installation](#)
- [7 Replacing the LED module](#)
- [8 Cleaning · Maintenance](#)
- [9 FAQ](#)
- [10 Documents / Resources](#)
 - [10.1 References](#)
- [11 Related Posts](#)

BEGA

BEGA 50 142.2 Technical Amendments Reserved



Specifications

- Material: Aluminium with matt surface finish
- Light cover: Light-diffusing synthetic material
- Power supply: LED, 220-240 V AC / 176-276 V DC, 50-60 Hz
- Control: DALI-controllable, 1 DALI address
- Safety Features: Safety class I, Impact strength IK05
- Weight: 2.3 kg

Product Usage Instructions

Installation

1. Installation and commissioning must be done by a qualified electrician following national safety regulations.
2. Ensure proper earth conductor connection.
3. Verify basic insulation between mains and control cables.

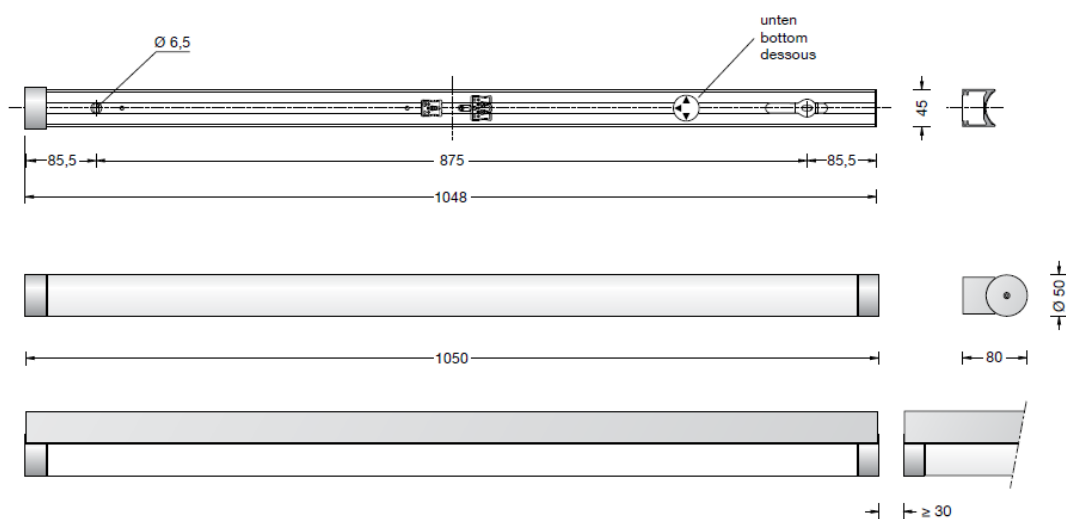
Operation

1. The luminaire operates at reduced LED power (15%) during DC operation.
2. Can be controlled via the DALI system with one address.
3. Temporary thermal regulation protects temperature-sensitive components without turning off the luminaire.

Maintenance

1. Avoid making modifications to the luminaire without the manufacturer's approval.
2. The manufacturer recommends additional overvoltage protection components for enhanced safety.

Instructions for use



Application

Ceiling and wall luminaire · indoor luminaire made of impact-resistant synthetic diffuser and aluminum housing. Luminaire with free-radiating and uniform light distribution for linear illumination in the interior.

Product Description

- Luminaire made of aluminum,
- matt surface finish
- Light-diffusing synthetic luminaire cover
- Two elongated mounting holes
- Width 6.5 mm · 875 mm spacing
- Connection terminal 2.5@
- Earth conductor connection
- 2-pole connecting terminal for
- digital control
- Complies with flicker requirements in
- accordance with IEEE 1789,
- DIN IEC/TR 63158, DIN IEC/TR 61547-1
- LED power supply unit
- 220-240 V x 0/50-60 Hz
- DC 176-276 V
- During DC operation the LED power
- is reduced to 15 %
- DALI-controllable
- Number of DALI addresses: 1
- Basic insulation is provided between the mains
- and control cables
- BEGA Thermal Control®
- Temporary thermal regulation to protect
- temperature-sensitive components without
- switching off the luminaire
- Safety class I
- Impact strength IK05
- Protection against mechanical
- impacts < 0.7 joule
- r – Safety mark
- c – Conformity mark
- Weight: 2.3 kg
- This product contains light sources of energy efficiency class(es) D

Safety

The installation and operation of this luminaire are subject to national safety regulations. Installation and commissioning may only be carried out by a qualified electrician. The manufacturer accepts no liability for damage caused by improper use or installation. If subsequent modifications are made to the luminaire, the person responsible for these modifications shall be considered the manufacturer.

Overvoltage protection

The electronic components installed in the luminaire are protected against overvoltage by DIN EN 61547. To achieve additional protection against e. g. transients, etc. we recommend separate overvoltage protection components. You can find them on our website at www.bega.com.

Lamp

- Module connected wattage 34.8 W
- Luminaire connected wattage 40 W
- Rated temperature $t_a = 25\text{ }^{\circ}\text{C}$
- Ambient temperature $t_a \text{ max} = 50\text{ }^{\circ}\text{C}$
- 50 142.2 K3
- Module designation 4x LED-0694/930
- Color temperature 3000 K
- Color rendering index CRI > 90
- Module luminous flux 5540 lm
- Luminaire luminous flux 4357 lm
- Luminaire luminous efficiency 108,9 lm / W
- 50 142.2 K4
- Module designation 4x LED-0694/940
- Color temperature 4000 K
- Color rendering index CRI > 90 Module luminous flux 5860 lm
- Luminaire luminous flux 4500 lm
- Luminaire luminous efficiency 112,5 lm / W

Please note

If the luminaire is to be mounted onto a metallic, electroconductive surface, it is mandatory to make sure that the mounting surface is connected conductive to the earth conductor of the luminaire

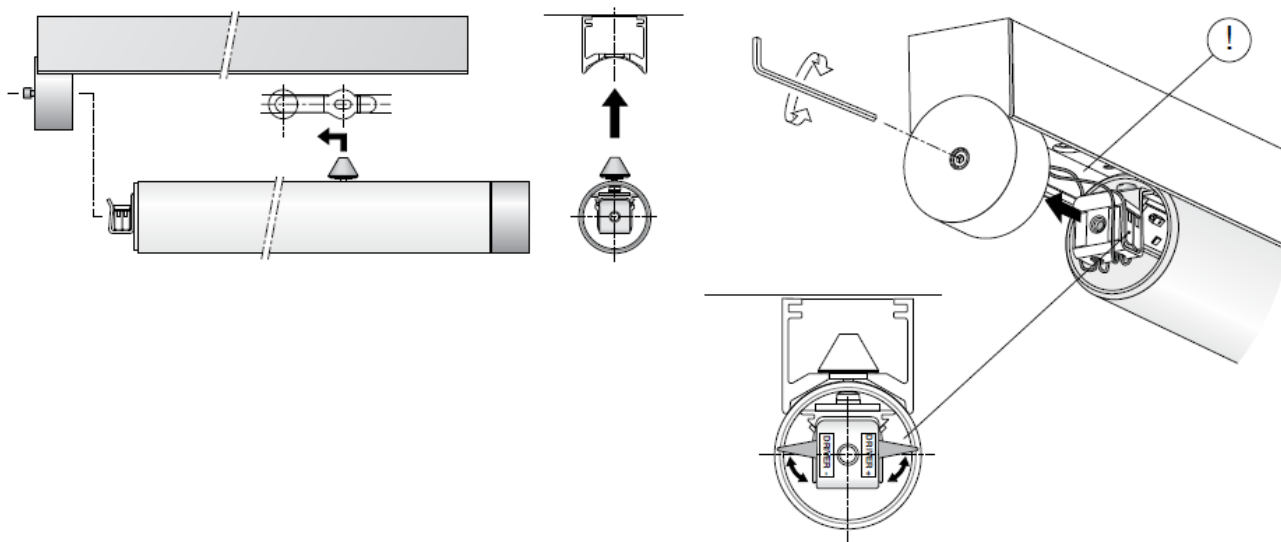
Note

If you are planning a linear arrangement of several luminaires, you must keep a minimum distance of 30 mm between the luminaire caps for installation reasons. The synthetic cover of the luminaire body can expand by max. 7 mm when hot.

Installation

- LEDs are high-quality electronic components! Please avoid touching the light output opening of the LED directly during installation or relamping.
- Remove the luminaire from the packaging and put it down on a soft surface with the rear of the housing open.
- Undo the hex socket screw on the side of the luminaire cap.
- Push the luminaire body on the housing to the side until the luminaire body can be removed freely.
- Make an earth conductor connection.
- Push silicone sleeves over the lines and make an electrical connection to the terminals.
- For digital control please use the connecting terminal DA, DA.
- In case this terminal is not used the luminaire will be operated at full light output
- Secure the luminaire housing to the installation surface with the fixing materials provided or other suitable materials.
- For wall installation note the position of the application "arrow down". Pick up the luminaire body and insert the retention bolt into the opening in the housing (keyhole).
- Before you connect the LED, first swing up the two locking levers of the LED connection terminal.
- Make the LED connection at the luminaire terminal – use long-nose pliers if necessary.

- Check that the poles are correct, black: “Driver -“, read: “Driver +”.
- Close the locking levers of the LED connection terminal.
- Push the luminaire body against the housing cap.
- Make sure not to damage the connection wires when pushing in. The hex socket screw is on the side of the housing cap.



Replacing the LED module

- The designation of the LED module is noted on a separate label in the luminaire or on the underside of the specific LED module. The light color and light output of BEGA replacement modules correspond to those of the modules originally fitted.
- The module can be replaced by qualified persons using standard tools. Disconnect the system. Undo the hex socket screw on the side of the luminaire cap. Push the luminaire body on the housing to the side and swing up the two locking levers of the LED connection terminal.
- Disconnect the LED connection at the luminaire terminal. Push the luminaire body on the housing to the side until the luminaire body can be removed freely.
- Unscrew the retention bolts (hexagon socket SW 3). Loosen the Pin-Torx countersunk screw (T 20). Slide the luminaire cover over the LED modules to the side.
- Remove the LED module. Install the replacement LED module.
- Please follow the installation instructions for the LED module.
- The defective luminaire cover must be replaced. Reassemble the luminaire again in reverse order. Make sure not to damage the connection wires when pushing into the housing cap.

Cleaning · Maintenance

- Clean the luminaire regularly with solvent-free cleaning agents to remove dirt.
- A defective synthetic cover must be replaced

Spares

- Synthetic cover 15 000 482

- LED power supply unit DEV-0469/1050i
- LED module 3000 K LED-0694/930
- LED module 4000 K LED-0694/940

FAQ

Q: Can I install this luminaire myself?

A: No, installation and commissioning should only be done by a qualified electrician to ensure safety and compliance.

Q: What is the weight of the product?

A: The luminaire weighs 2.3 kg.

Q: How does the luminaire protect temperature-sensitive components?

A: The luminaire has temporary thermal regulation to safeguard such components without shutting down the light.

Documents / Resources

	<p>BEGA 50 142.2 Technical Amendments Reserved [pdf] Instruction Manual 50 142.2 Technical Amendments Reserved, 50 142.2, Technical Amendments Reserved, Amendments Reserved, Reserved</p>
------------------------------------------------------------------------------------	-----------------------------------------------------------------------------------------------------------------------------------------------------------------------------------------------------------------

References

- [BEGA · Das gute Licht.](#)
- [User Manual](#)

Manuals+, [Privacy Policy](#)

This website is an independent publication and is neither affiliated with nor endorsed by any of the trademark owners. The "Bluetooth®" word mark and logos are registered trademarks owned by Bluetooth SIG, Inc. The "Wi-Fi®" word mark and logos are registered trademarks owned by the Wi-Fi Alliance. Any use of these marks on this website does not imply any affiliation with or endorsement.