



BEG 93547 PICO-BMS-DALI-2-FP Mini Multi Sensor Detector Installation Guide

[Home](#) » [BEG](#) » [BEG 93547 PICO-BMS-DALI-2-FP Mini Multi Sensor Detector Installation Guide](#) 

B.E.G

93547 PICO-BMS-DALI-2-FP Mini Multi Sensor Detector Installation Guide

Contents

- [1 Safety instructions](#)
- [2 Initial operation](#)
- [3 Technical data](#)
- [4 Trouble shooting](#)
- [5 Documents / Resources](#)

Safety instructions



Work on the mains supply may only be carried out by qualified professionals or by instructed persons under the direction and supervision of qualified skilled electrical personnel in accordance with electrotechnical regulations.



Disconnect supply before installing! This device is not to be used to isolate other equipment from the mains supply.



DALI is not SELV – the installation instructions for low voltage apply. The DALI screw clamps must not be connected to 230 VAC!



Read this supplementary sheet and the operating instructions before putting the device into operation.

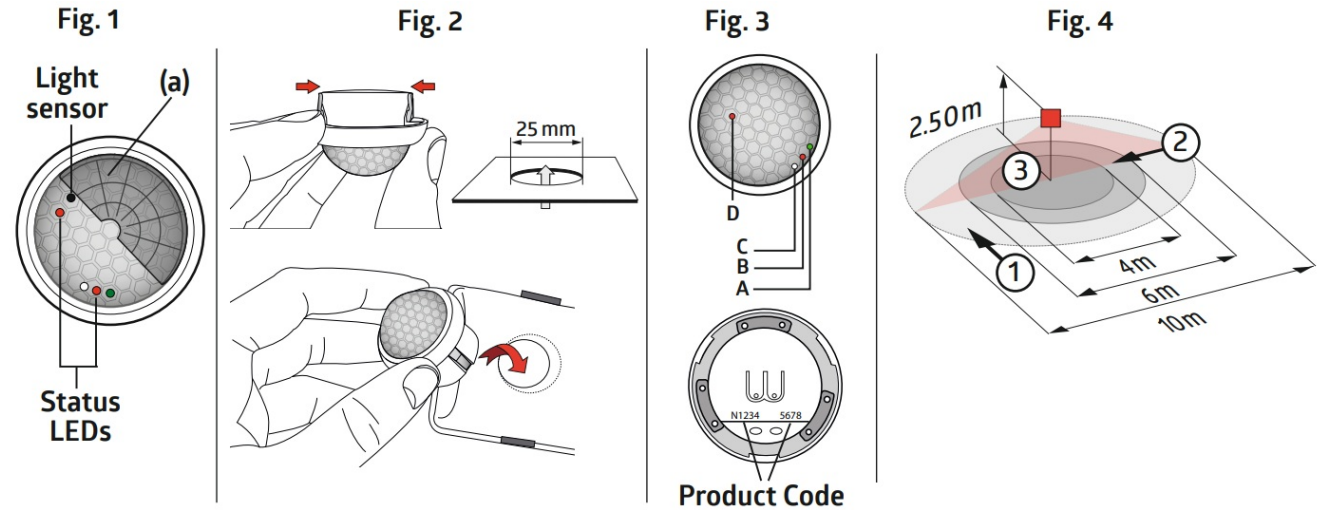
Knowledge of these documents is part of the intended use!

Function

DALI-2 mini multi-sensor (input device) with only 11 mm installation depth for installation in luminaires. Power supply via DALI bus.

i Addressable according to IEC 62386 Part 103 (control device). Instance 0 provides information regarding occupancy and movement for the DALI bus according to IEC 62386 part 303. Instance 1 provides LUX values for the DALI bus according to IEC 62386 part 304. Parameterization is possible via mandatory Multimeter-Application-Controller of any manufacturer. This controller must support IEC 62386 parts 101/103/303/304

Mounting



	1	2	3
2.50 m	Ø 10.00 m	Ø 6.00 m	Ø 4.00 m
5.00 m	Ø 20.00 m	Ø 12.00 m	—

Initial operation

i **General:** The device can be put into service directly after mounting, following the software instructions from the relevant controller manufacturer.

Exclude sources of interference

In case the detection area of the detector is too large or areas are being covered that should not be monitored, the range can be reduced or limited by using the enclosed blinds.

Self-test cycle

During the first 20 sec after connecting to the DALI bus power, the product will enter a self-test cycle. During this time the device does not respond to movement.

LED function indicators

Shortly on:

A Green	Movement
B Red	—
C White	—


Flashing:

A Green	Localization
B Red	Initialization
C White	Localization
D Red	Localization

Technical data



Settings: via application which supports DALI multisensory (IEC 62386 parts 101/103/303/304).'

DALI-BUS max. 22.5 V  Voltage



.5 – 0.75 mm² 10mm

Terminal clamps: for solid one-wire conductors

360° A

Area of coverage

2 m / 5 m / 2.5 m

Mounting height min./max./ recommended

Fig. 4 2.5 m 18°C

1 = Ø 10m

2 = Ø 6 m

3 = Ø 4m

Range of coverage at mounting height Ambient temperature

1. accross
2. towards
3. seated activities

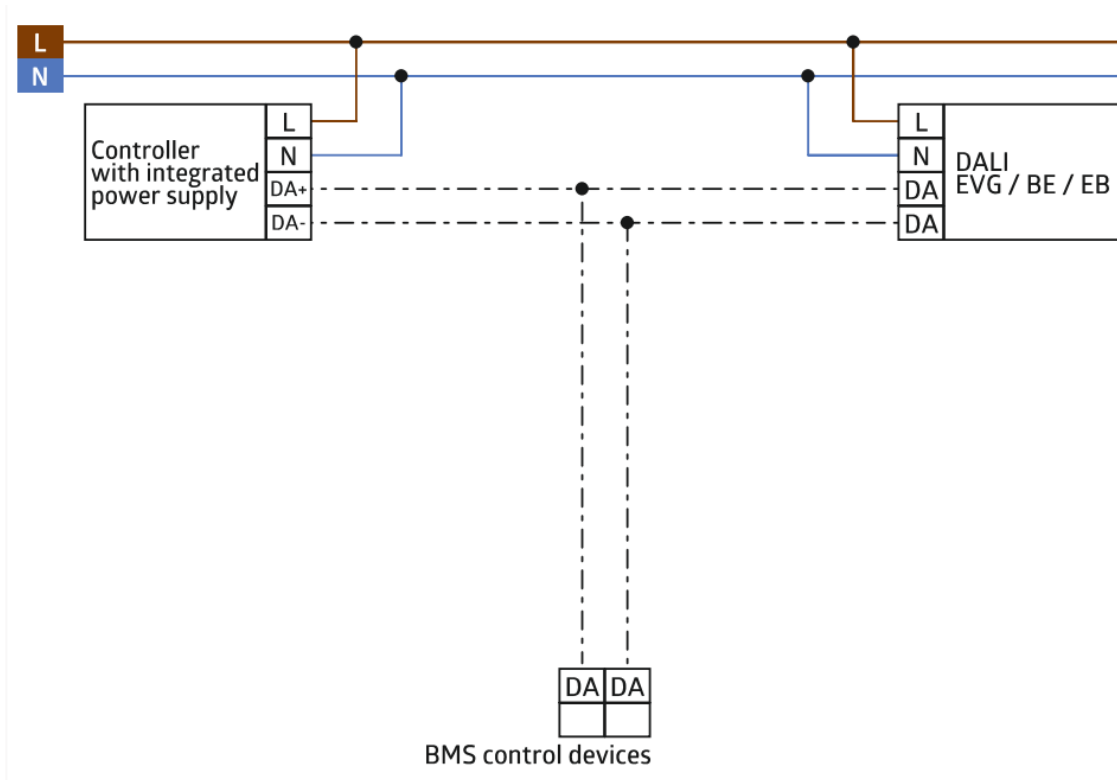
79 m²

Monitored surface, when the detector is mounted at 2.5 m mounting height and for tangential approach

II / IP20	Class / Degree of protection
Ø 33 x 27 mm	Dimensions
-25°C – +50°C	Ambient temperature
0 – 4095 Lux	Measured light output

Schematic diagram

Schematic diagram – when connecting the detector, please respect the labelling of the terminal connections at the device!



Declaration of conformity

This product respects the directives concerning

1. Electrical Equipment Safety Regulation 2016
2. Electromagnetic Compatibility Regulation 2016
3. The Restriction of the Use of Certain Hazardous Substances in Electrical and Electronic Equipment Regulation 2012

Contact

B.E.G. UK Ltd., Apex Court Grove House • Camphill Road • West By fleet, Surrey KT14 6SQ

Trouble shooting

1. Power consumption on DALI line too high Please be aware of the total power consumption of all the DALI units in your system.
2. Heat sources in the vicinity If, for example, the detector is located in the immediate vicinity of ventilation slits or a projector, the warm air currents can trigger motion detection. Place the detector at a sufficient distance from potential sources of interference such as ventilation slits, projectors, beamers, etc.



<https://www.beg-luxomat.com/qr.php?prtno=93547>

Safety instructions



Work on the mains supply may only be carried out by qualified professionals or by instructed persons under the direction and supervision of qualified skilled electrical personnel in accordance with electrotechnical regulations.



Disconnect supply before installing! This device is not to be used to isolate other equipment from the mains supply.



DALI is not SELV – the installation instructions for low voltage apply. The DALI screw clamps must not be connected to 230 VAC!



Read this supplementary sheet and the operating instructions before putting the device into operation. Knowledge of these documents is part of the intended use!

Operation

DALI-2 mini multi-sensor (input device) with only 11 mm installation depth for installation in luminaires. Power supply via DALI bus.



Addressable according to IEC 62386 Part 103 (control device). Instance 0 provides information regarding occupancy and movement for the DALI bus according to IEC 62386 part 303. Instance 1 provides LUX values for the DALI bus according to IEC 62386 part 304. Parameterization is possible via mandatory Multimeter-Application-Controller of any manufacturer. This controller must support IEC 62386 parts 101/103/303/304.

Mounting

Fig. 1

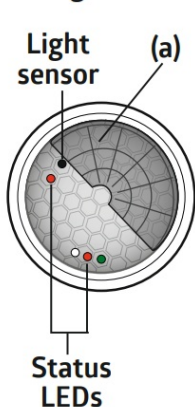


Fig. 2

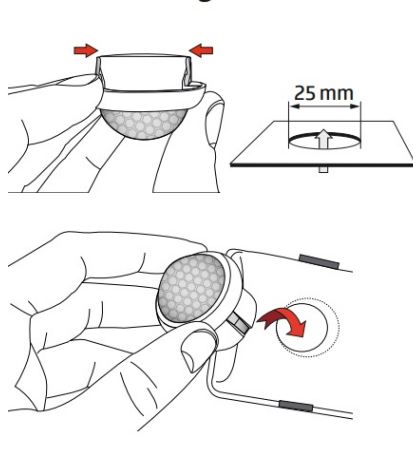


Fig. 3

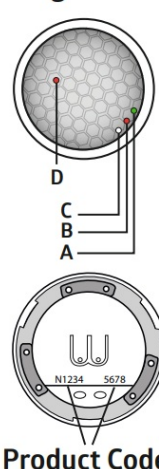
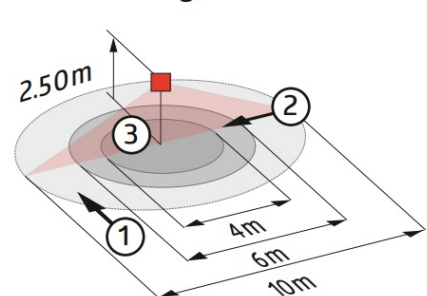



Fig. 4



	1	2	3
2.50 m	Ø 10.00 m	Ø 6.00 m	Ø 4.00 m
5.00 m	Ø 20.00 m	Ø 12.00 m	–

Initial operation



General: The device can be put into service directly after mounting, following the software instructions from the relevant controller manufacturer.

Exclude sources of interference

In case the detection area of the detector is too large or areas are being covered that should not be monitored, the range can be reduced or limited by using the enclosed blinds.

Self-test cycle

During the first 20 sec after connecting to the DALI bus power, the product will enter a self-test cycle. During this time the device does not respond to movement.

LED function indicators

Shortly on:

A Green	Movement
B Red	–
C White	–

Flashing:


A Green	Localization
B Red	Initialization
C White	Localization
D Red	Localization

Technical data

Settings: via application which supports DALI multisensors (IEC 62386 parts 101, 103, 303, 304).

DALI-BUS max. 22.5 V  Voltage



 .5 – 0.75 mm² 10mm

Terminal clamps: for solid one-wire conductors

360° A

Detection area

2 m / 5 m / 2.5 m

Mounting height min./max./ recommended

Fig. 4 2.5 m 18°C

1 = Ø 10m

2 = Ø 6 m

3 = Ø 4m

Range of coverage at mounting height Ambient temperature

1. across

2. towards

3. seated activities

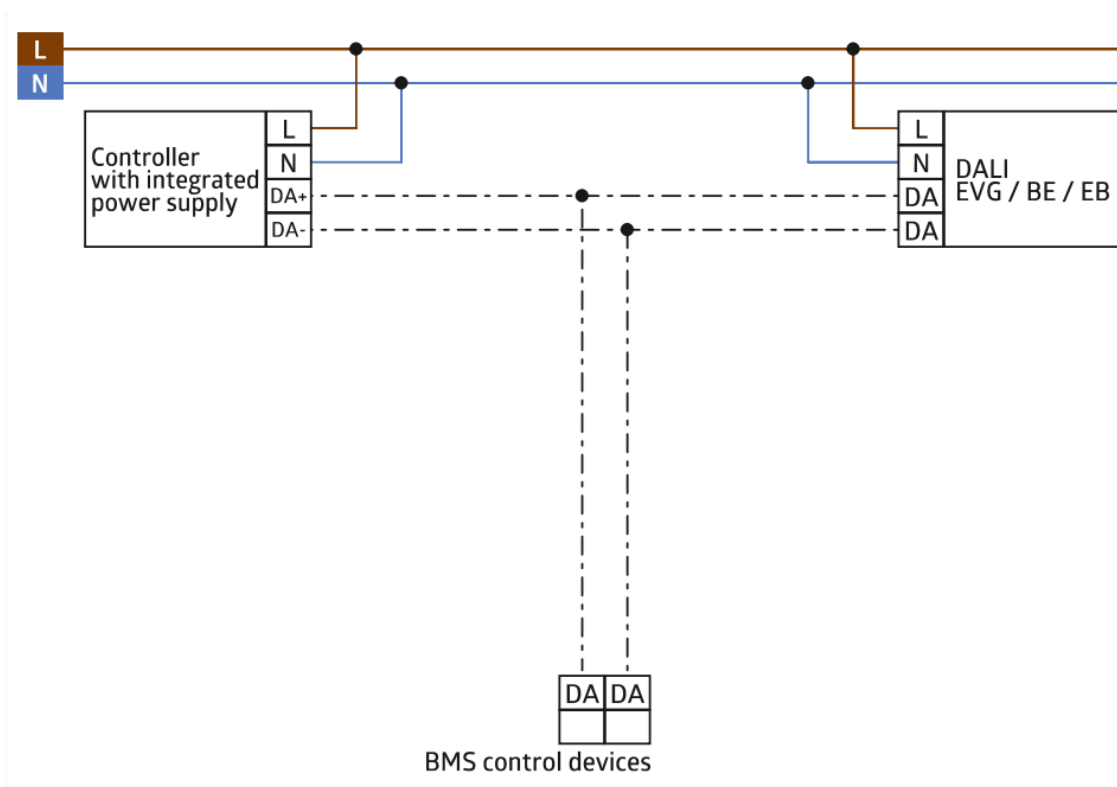
79 m²

Monitored surface, when the detector is mounted at 2.5 m mounting height and for tangential approach

II / IP20	Class / Degree of protection
Ø 33 x 27 mm	Dimensions
-25°C – +50°C	Ambient temperature
0 – 4095 Lux	Measured light output

Wiring diagram

Schematic diagram – when connecting the detector, please respect the labelling of the terminal connections at the device!



Declaration of conformity

This product respects the directives concerning

1. electromagnetic compatibility (2014/30/EU)
2. low voltage (2014/35/EU)
3. restriction of the use of certain hazardous substances in electrical and electronic equipment (2011/65/EU)

Trouble shooting

1. Power consumption on DALI line too high Please be aware of the total power consumption of all the DALI units in your system.
2. Heat sources in the vicinity If, for example, the detector is located in the immediate vicinity of ventilation slits or a projector, the warm air currents can trigger motion detection. Place the detector at a sufficient distance from potential sources of interference such as ventilation slits, projectors, beamers etc.



<https://www.beg-luxomat.com/gr.php?prtno=93547>

Product page on the internet

Brück Electronic GmbH | Gerberstr. 33 | 51789 Lindlar | GERMANY

Phone: +49 (0) 2266 90121-0

Fax: +49 (0) 2266 90121-50

info@beg.de

beg-luxomat.com

Documents / Resources



[BEG 93547 PICO-BMS-DALI-2-FP Mini Multi Sensor Detector](#) [pdf] Installation Guide
93547 PICO-BMS-DALI-2-FP Mini Multi Sensor Detector, 93547 PICO-, BMS-DALI-2-FP Mini M
ulti Sensor Detector, Mini Multi Sensor Detector, Multi Sensor Detector, Sensor Detector

[Manuals+](#)