

BEG 91102 LC-Click Motion Detector



BEG 91102 LC-Click Motion Detector Instruction Manual

[Home](#) » [BEG](#) » **BEG 91102 LC-Click Motion Detector Instruction Manual** 

Contents

- [1 BEG 91102 LC-Click Motion Detector](#)
- [2 Product Information](#)
- [3 Product Usage Instructions](#)
- [4 FAQ](#)
- [5 Safety instructions](#)
- [6 Function](#)
- [7 Mounting](#)
- [8 Mounting hints](#)
- [9 Technical data](#)
- [10 Troubleshooting](#)
- [11 Documents / Resources](#)
 - [11.1 References](#)



BEG 91102 LC-Click Motion Detector



Product Information

Specifications:

- Product Code: 91102 / 91122
- Colors Available: White, Black
- Maximum Load Capacity: Limited due to high inrush currents of electronic ballasts and LED drivers
- Recommended Use: For motion detection and automatic switching of lighting

Product Usage Instructions

Safety Instructions:

Work on the mains supply should only be carried out by professionals or instructed persons under the supervision of a qualified skilled electrical personnel.

Disconnect the power supply before installing the device. Do not use the device to isolate other equipment from the mains supply.

Function:

The device is designed to automatically switch lighting based on the presence of individuals (motion) and ambient light levels.

The light turns on if the ambient light level falls below a specific threshold and movement is detected. The light remains on as long as movement is detected plus the set follow-up time.

Mounting:

Refer to the provided figures for proper mounting instructions. Ensure to follow all steps carefully for successful installation.

FAQ

Q: What should I do if I need to connect a large number of loads?

A: In case of a large number of connected loads, it is recommended to use an external contactor to manage the load effectively.

Q: Is interference suppression necessary for all connected loads?

A: Yes, proper interference suppression is obligatory for all connected loads. It is recommended to use arc extinction kits for this purpose.

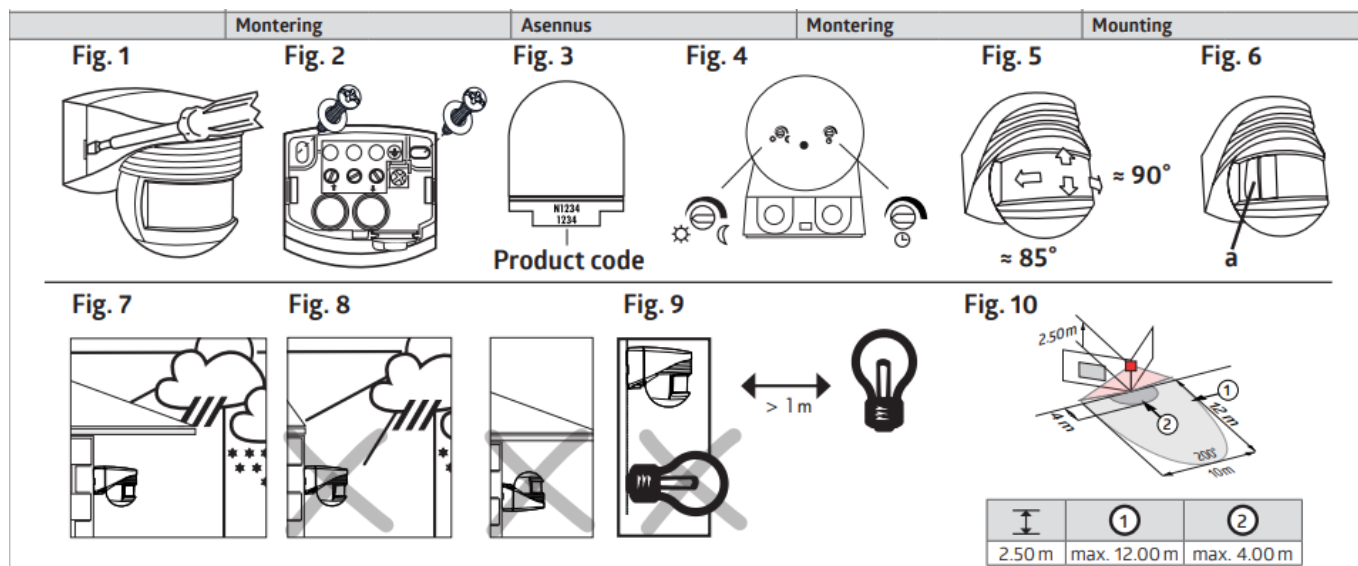
Safety instructions

- Work on the mains supply may only be carried out by qualified professionals or by instructed persons under the direction and supervision of qualified skilled electrical personnel in accordance with electrotechnical regulations.
- Disconnect supply before ins-talling! This device is not to be used to isolate other equipment from the mains supply.
- The total number of switchable loads is limited due to high inrush currents of electronic ballasts and LED drivers. In case of a large number of connected loads please use an external contactor.
- For all connected loads, proper interference suppression is obligatory (we recommend to use our arc extinction kits).
- Read this supplementary sheet before putting the device into operation.
Knowledge of this document is part of the intended use.

Function

- The device is a motion detector for outdoor use with 200° detection area.
- Motion detectors automatically control the light, based on people being present (motion) and on the ambient light level. The detector switches the light on if the ambient light level is below a switch-on threshold (which can be set on the device) and movement is detected. The light remains switched on as long as the detector detects movement (independent of the lighting level) plus follow-up time.

Mounting



Mounting hints

- The detector has to be mounted in such a way that the potentiometers are facing down.
- The device does not fulfil the requirements of DIN EN50131-2-2 and therefore cannot be used in professional intrusion detection systems.
- Remove the detector from the mounting base using a slotted screwdriver.
- Fix the mounting socket on a solid plane using two screws (please take care with cable introduction).
- The detection range can be modified by rotating the detector head vertically and horizontally (detector head horizontal = max. detection range)
- Install the LC-Click in a weather protected area
- Influence of weather has negative impact on the device's lifetime. Inappropriate installation or use will interfere with trouble-free operation or will make a trouble-free operation impossible.
- Minimum distance to switched lighting, frontally or laterally to device: 1 m
Do not install any lighting below the device.

Exclude sources of interference

In case the detection area of the detector is too large or areas are being covered that should not be monitored, the range can be reduced or limited by using the enclosed blinds (a).

Self-test cycle

The product enters an initial 60-second self-test cycle when the supply is first connected. During this time the device does not respond to movement.

EU Declaration of conformity

This product respects the directives concerning

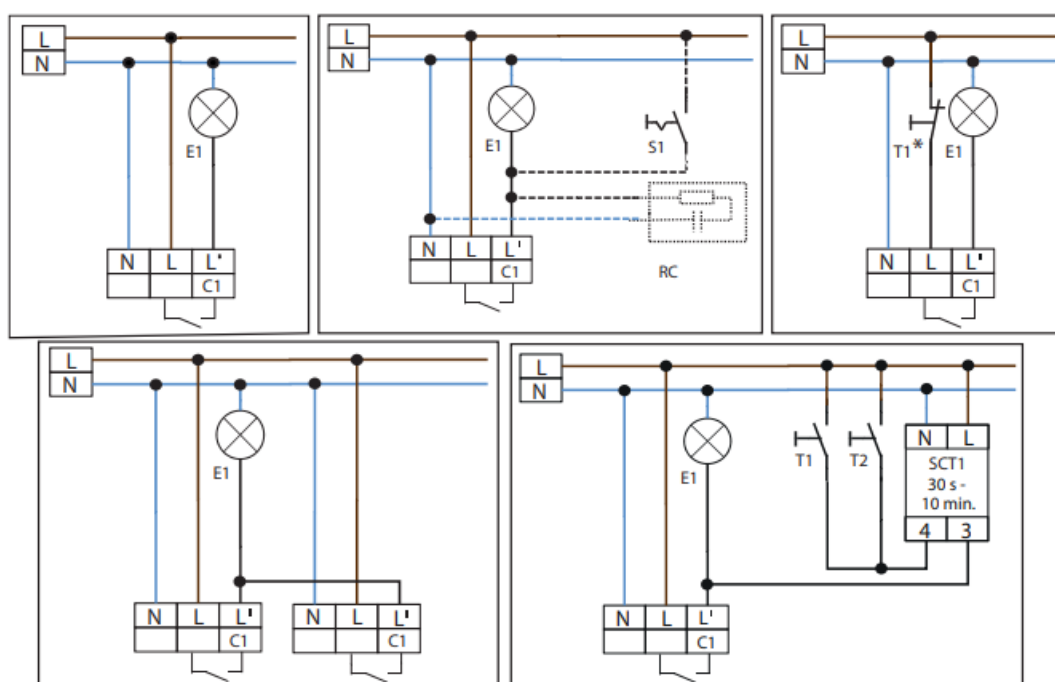
1. electromagnetic compatibility (2014/30/EU)
2. low voltage (2014/35/EU)
3. restriction of the use of certain hazardous substances in electrical and electronic equipment (2011/65/EU) and (2015/863/EU)

Technical data

110-240 V ~, 50/60 Hz	Voltage	
ca./approx. 0.4 W	Power input	
0.5 – 2.5 mm² 10mm	Terminal clamps: for solid one-wire conductors	
200°	Area of coverage	
2 m / 3 m / 2.5 m	Mounting height min./max./ recommended	
u Fig. 10 2.5 m 18°C 1 = max. Ø 12 m 2 = max. Ø 4 m	Range of coverage at mounting height Ambient temperature 1 across 2 towards	
II / IP44	Class / Degree of protection	
103 x 78 x 80 mm	Dimensions	
-25°C – +50°C	Ambient temperature	

C1 μ – NO 1000 W cosφ = 1 500 VA cosφ=0.5	Relay contact Switching capacity	
A B A = 4 s – 10 min B = 10 – 300 Lux	Settings via potentiometers Follow-up time Switch-on threshold	
	Schematic diagram	
	Schematic diagram – when connecting the detector, please respect the labelling of the terminal connections at the device!	
T1/T2	button, manual switching on T1* + manual switching off	
S1	Switch for permanent light	
E1	Lamp	
RC	Arc extinction kit if required – Part no . 10880	

SCT1	Light control with staircase timer model SCT1 – Part no. 92655	
	Do not connect more than 5 devices in parallel in order to avoid any erroneous switching.	
	Accessory	
10880	RC-Arc extinction kit	
92467	Wire basket BSK (Ø 164 x 143 mm)	



Troubleshooting

1. Lamp does not light up

- Lamp may be defect: Replace lamp
- No mains connection/power: Check connection and mains fuse by qualified electrician
- Incorrect setting of switch-on threshold:
- Correct setting of threshold (potentiometer)
- Lens of sensor unit obstructed by dirt or other objects: Clean lens

2. Lamp turns ON too late or detection range too small

- The detector is mounted too high:
Correct mounting height if required.
- Incorrect setting of switch-on threshold:
- Correct setting of threshold (potentiometer)

3. Lamp stays ON continuously

- Continuous thermal activity detected within detection area:
Remove heat source. Check proper function of the detector by covering the lens. After expiry of the follow-up time, the detector has to turn OFF lighting.
- The detector is connected in parallel to a manual override switch:
Connect switch correctly

4. Unintended switching of light

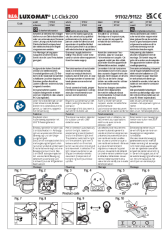
- Movement of heat sources within detection area:
 - Do not install the detector in the vicinity of radiators, fans or air vents.
 - Animals are detected as moving heat sources, too.

Product page on the internet



Brück Electronic GmbH | Gerberstr. 33 | 51789 Lindlar | GERMANY | Phone: +49 (0) 2266 90121-0 | support@beg.de | beg-luxomat.com

Documents / Resources

	<p>BEG 91102 LC-Click Motion Detector [pdf] Instruction Manual 91102 LC-Click Motion Detector, 91102, LC-Click Motion Detector, Click Motion Detector, Motion Detector, Detector</p>
---	--

References

- [B.E.G. Home - B.E.G.](#)
- [User Manual](#)

Manuals+. Privacy Policy

This website is an independent publication and is neither affiliated with nor endorsed by any of the trademark owners. The "Bluetooth®" word mark and logos are registered trademarks owned by Bluetooth SIG, Inc. The "Wi-Fi®" word mark and logos are registered trademarks owned by the Wi-Fi Alliance. Any use of these marks on this website does not imply any affiliation with or endorsement.