



BEEKMAN Barcode Tool Setup Windows User Guide

[Home](#) » [BEEKMAN](#) » BEEKMAN Barcode Tool Setup Windows User Guide 

Contents

- 1 [BEEKMAN Barcode Tool Setup Windows](#)
- 2 [Product Information](#)
- 3 [Product Usage Instructions](#)
- 4 [Click Users](#)
- 5 [Documents / Resources](#)
 - 5.1 [References](#)
- 6 [Related Posts](#)

BEEKMAN I802

BEEKMAN Barcode Tool Setup Windows



Product Information

The Beekman Barcode Tool is software used for setting up the Beekman (Opticon) Barcode Scanner on Windows operating systems. It is important to follow the instructions carefully to ensure proper installation and usage.

Product Usage Instructions

1. Do not connect the Beekman Barcode Scanner yet. First, download the Beekman Barcode Scanner Tool from this link: <https://www.beekman.nl/files/download/bbt.exe>.
2. Open the downloaded file from your browser (e.g. Google Chrome or Microsoft Edge).
3. Follow the on-screen instructions and input the necessary information as shown in the examples.
4. Click "Finish" to complete the installation.
5. Download the latest drivers for the Opticon Barcode Scanner from this link:
<https://www.opticon.com/support/Drivers/USB%20Drivers%20Installer.exe>.
6. Open the downloaded file from your browser (e.g. Google Chrome or Microsoft Edge).
7. Select only the option "OPN/OPR/MDI/OPI/M5/M6 Drivers".
8. After installation, click "OK". If you encounter any issues, create an incident and forward it to your ICT department.
9. Open the Windows Explorer app and navigate to the Beekman Barcode Tool folder.
10. Select the folder on the right side of the window, right-click on it, and click "Properties".
11. Click on the "Security" tab, then click "Edit".
12. Select "Users" and check the box next to "Full control" by clicking on it with the left mouse button. Other empty boxes will automatically be checked.
13. Click "OK" twice to apply the changes to ensure proper functionality of the Beekman Barcode Scanner on Windows.
14. Restart your computer.
15. After logging in, connect the Beekman Barcode Scanner to an available USB port. Check if the connection is established by double-clicking on the Beekman Barcode Scanner Tool icon in the taskbar (system tray) with the left mouse button. The Beekman Scanner Tool window will appear. If other windows are open, minimize them as the Beekman Scanner Tool window may be hidden behind them.
16. If the installation is successful, the window should show "Connected". If it shows "Not connected", disconnect the scanner and reconnect it with the USB cable. If "Not connected" still appears, click on "Retry". If the issue persists, contact customer support.

Beekman Barcode Tool Setup Windows

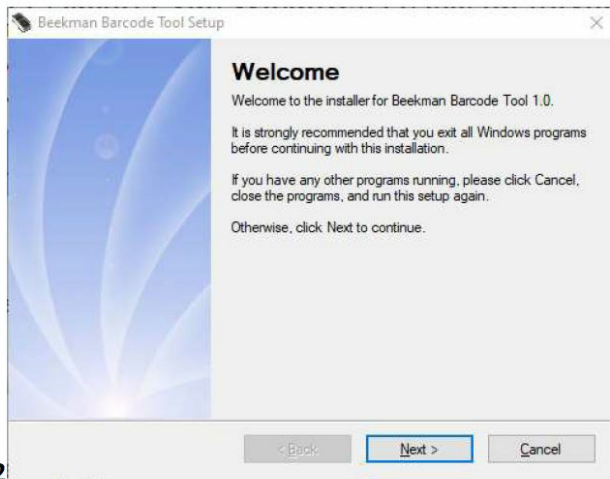
Important! Do not connect the Beekman (Opticon) Barcode Scanner yet! Follow the instructions below

Attention: Download the Beekman Barcode Scanner Tool here:

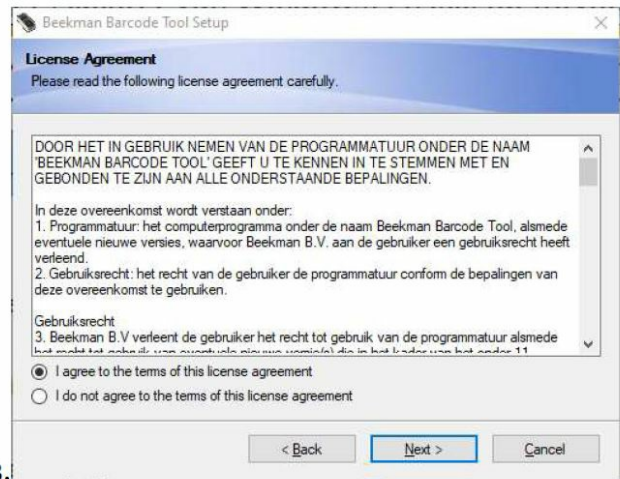
<https://www.beekman.nl/files/download/bbt.exe>.



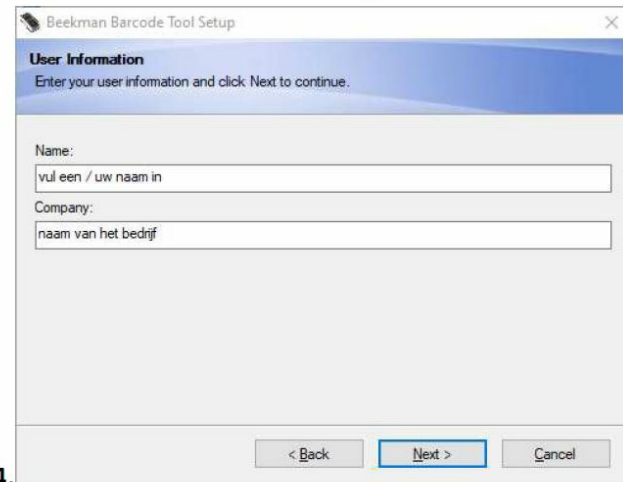
perform (open) e.g. Google Chrome or Microsoft Edge



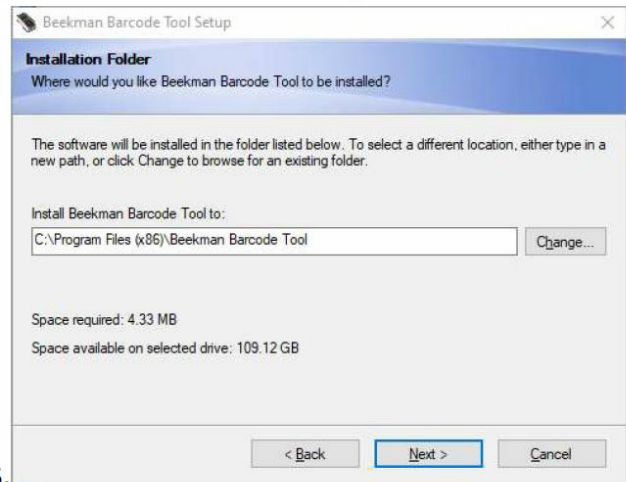
2.



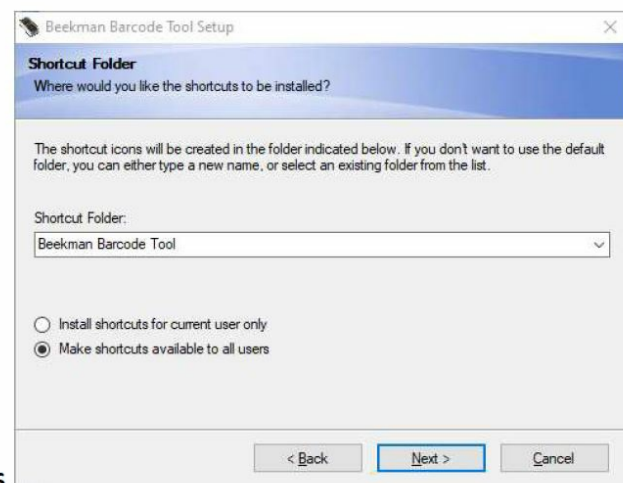
3.



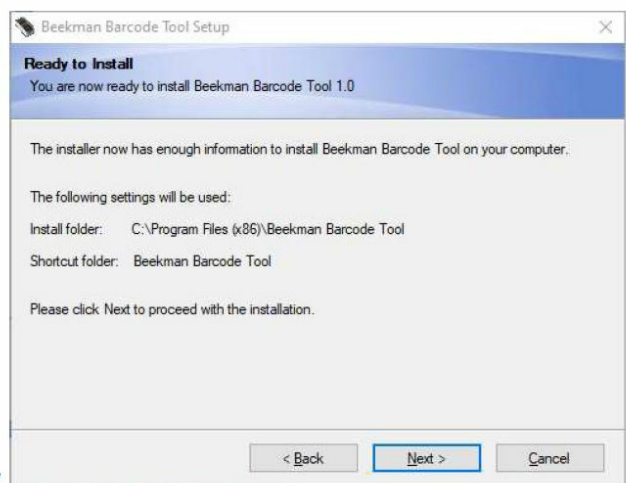
4.



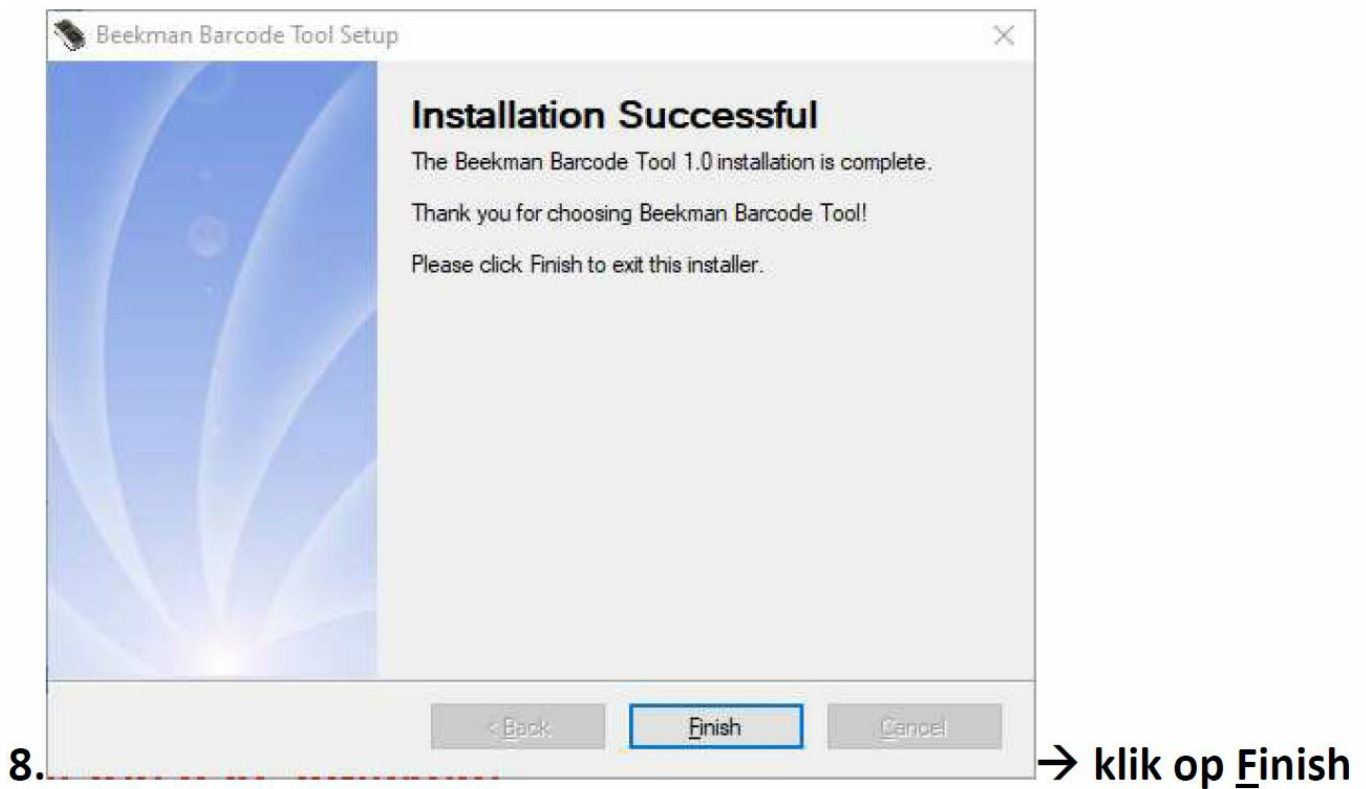
5.



6.



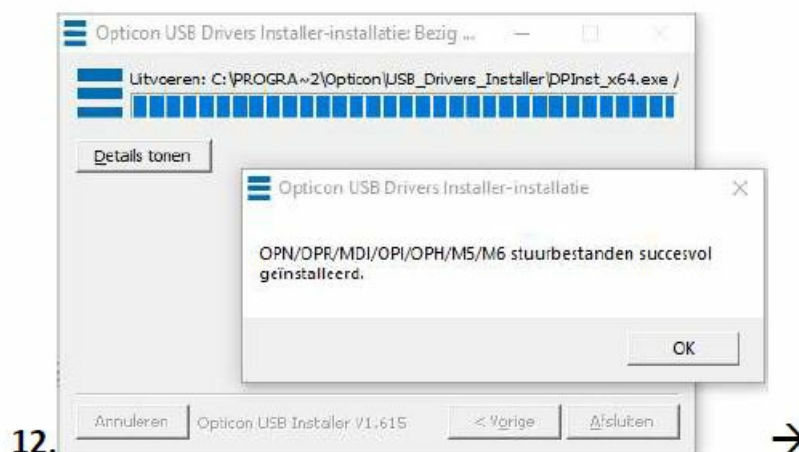
7.




Click-up finish Download de most recent drivers van de vipatacon barcode scanner hir
<https://www.opticon.com/support/Drivers/USB%20Drivers%20Installer.exe>.

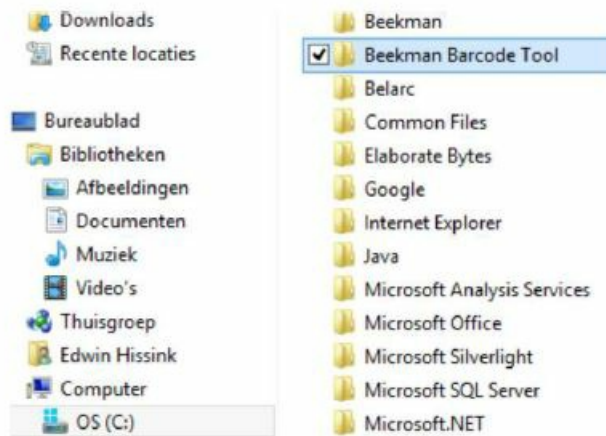


just select the REC/OPR/MDI/OPI/M5/M6 Drivers option

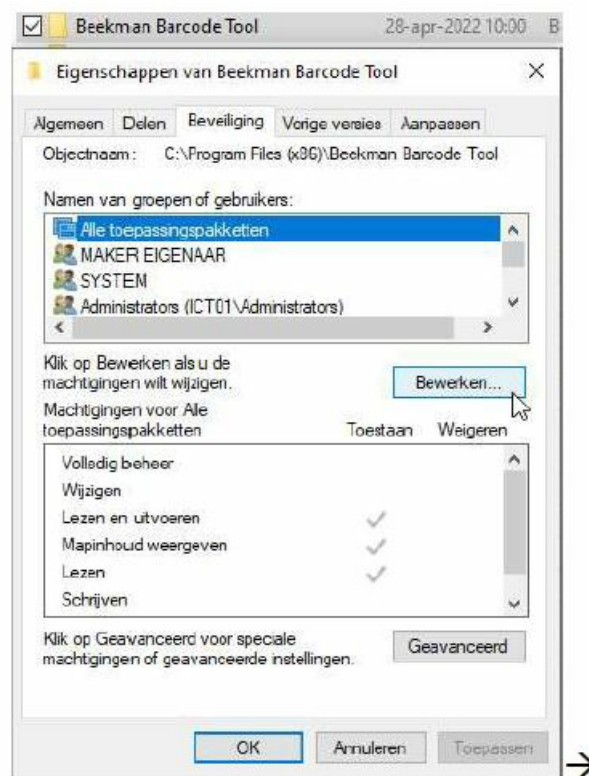


After installation, click OK. If you have another (error) message, please contact our Sales Department on number 055 – 538 1100. They can create an incident and forward it to the ICT department.

13. Now open the Windows Explorer App  and select the on the right side of the window leaflet Beekman Barcode Tool

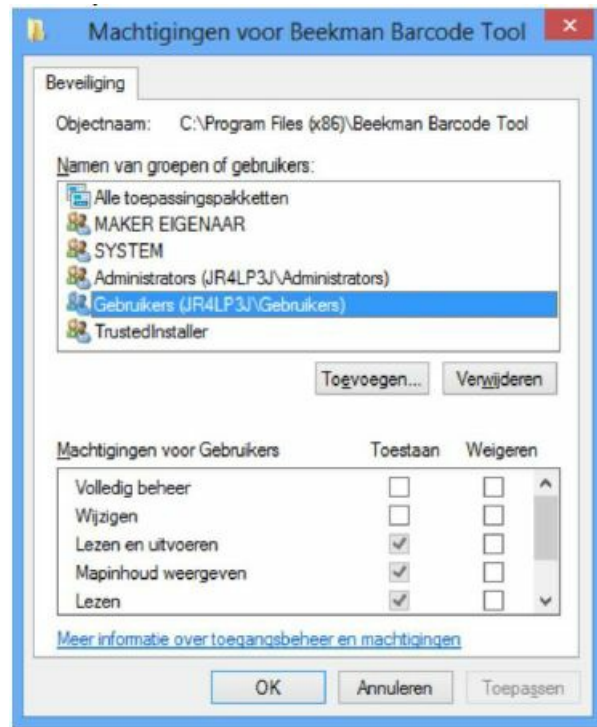


-right-click on the folder  and click →  →



click the Security tab. Then click Edit.

Click Users

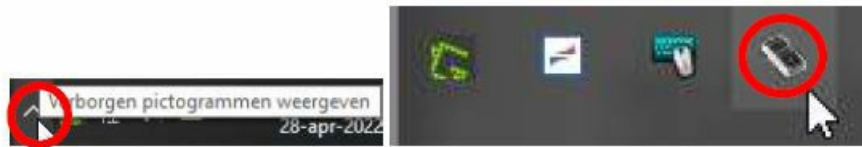


Place a checkmark by clicking with the left(!) mouse button on it empty box at Full control – Allow. Other (empty) boxes are automatically checked.



Then click 2x on OK... (two windows). Adjusting the permissions to work properly can work under Windows 1x with the Beekman Barcode Scanner.
Now restart the computer.

After you have logged in you can connect the Beekman Barcode Scanner to an available USB port. Check whether the connection has actually been made by clicking twice with the left(!) mouse button clicking on the Beekman Barcode Scanner Tool icon at the bottom of the taskbar (system icon)

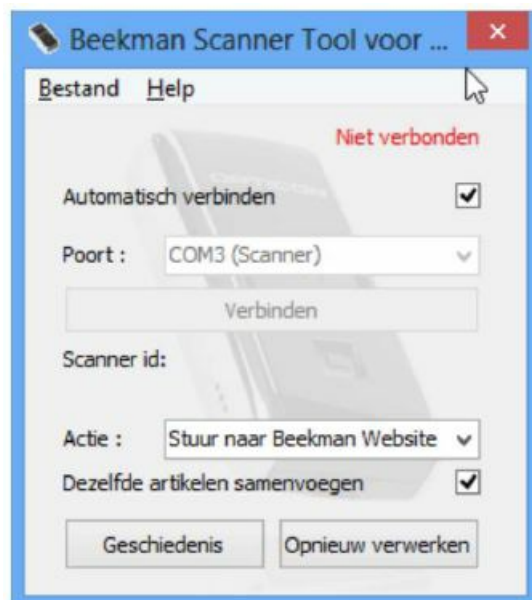


The window below will appear –

Note: if other windows are open, you must open them first minimalize. The Beekman Scanner Tool window nestles behind all other active windows...



If the installation was successful, the window should look like this (or comparable)! If you see the window below (Not Connected) then something is wrong with the scanner and/or the connection cable. Then disconnect the scanner and reconnect with the USB connection cable. If Even if Not Connected is visible, click Reprocess once. This is still wanted to be the solution. It is also possible that the installation did not go well. Then take it Contact us.



NB If you unpair the scanner and then re-pair it to a physically different one USB port then the drivers will be reinstalled. You will then see an installation window which may take some time (up to 30 sec.). This is completely normal because every physical USB port functions separately. You can then use the scanner again. Windows 'remembers' this installation and will not reinstall the drivers for that USB port afterwards. Telephone number Beekman B.V.: 055 – 538 1100



[BEEKMAN Barcode Tool Setup Windows](#) [pdf] User Guide
Barcode Tool Setup Windows, Tool Setup Windows, Setup Windows, Windows

References

- beekman.nl/files/download/bbt.exe
- opticon.com/support/Drivers/USB%20Drivers%20Installer.exe

Manuals+.