



Beech Lane A05 Wireless RV Leveling System Instruction Manual

[Home](#) » [Beech Lane](#) » Beech Lane A05 Wireless RV Leveling System Instruction Manual 

Contents

- [1 Beech Lane A05 Wireless RV Leveling System](#)
- [2 Product Information](#)
- [3 Setup](#)
- [4 Important Installation Tips](#)
- [5 Using The Application](#)
- [6 Leveling Your RV](#)
- [7 Leveling Method 2 Overlook view screen](#)
- [8 Troubleshooting Guides](#)
- [9 FCC STATEMENT](#)
- [10 Documents / Resources](#)
 - [10.1 References](#)



Beech Lane A05 Wireless RV Leveling System



Product Information

Specifications

- Product: RV Leveling System
- Warranty: Lifetime Warranty
- Contact: youngood2000@gmail.com
- Document Number: WI-MU-Z04

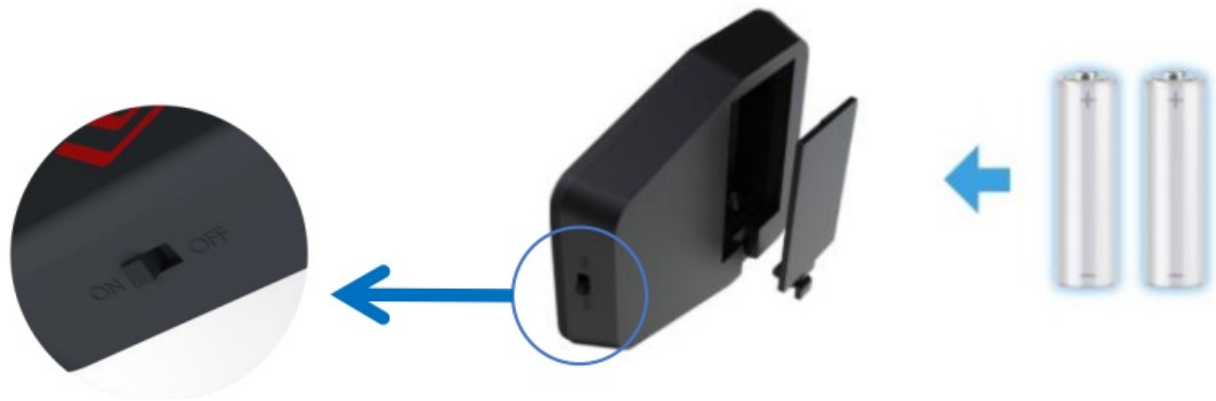
Setup

Installing The Unit

1. First, use the provided screws to fix the base to the wall. The base has two screw holes, each to be secured with one screw. If you do not want to drill screws into the walls of your RV, you can choose to use 3M adhesive to install the base on the wall. Try to mount it flat on the wall, but it does not need to be perfectly level.



2. Next, open the battery cover of the device, insert two AA batteries, close the battery cover, and turn the power switch on the bottom of the device to “on” position.



3. Finally, insert the device into the base from top to bottom to secure it in place.



Important Installation Tips

1. You should place the device as close to the driver's seat of your RV or truck as possible for the best connection. Avoid having objects such as cabinets or appliances between the leveler box and the driver's seat. Placing the box near a window can also help improve the connection.
2. You may want to test the connection in various locations to find the best spot before permanently installing the device on the wall. Although the device has strong wireless capabilities, every RV is different and can affect the connection. We have found that installing it in an external storage compartment provides the best connection.
3. Try to mount the device as level as possible on the wall, but it does not need to be perfect since you will recalibrate it later.

Pair With Your Phone

1. Download our phone application from the Google Play Store or the Apple App Store. The app is called Beech Lane RV Leveling System and is available for free. However, it will not function without the wireless device. Below are QR codes to download the app directly.



ANDROID/ iOS

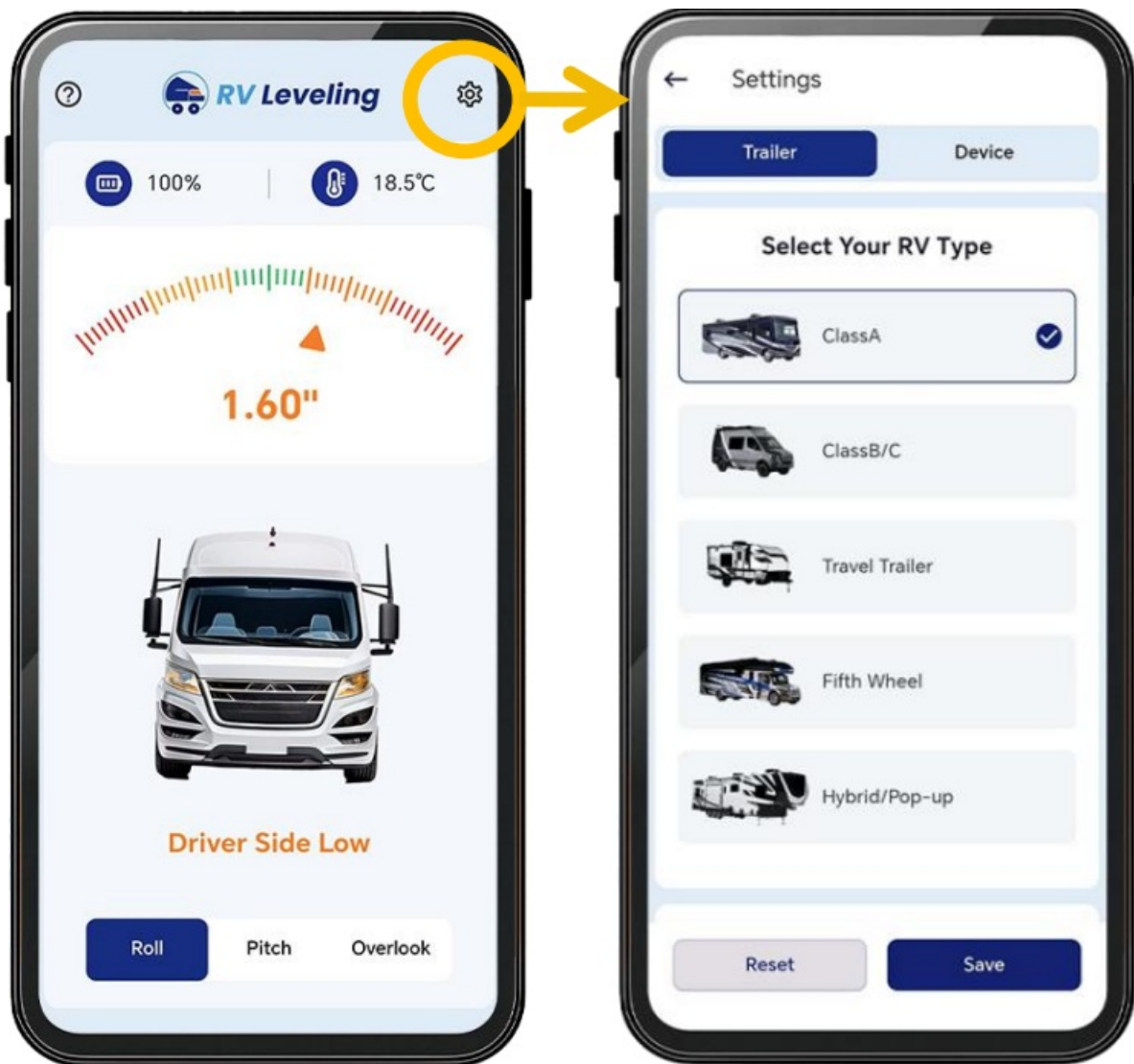
2. Make sure that the device has batteries and the switch is in the “on” position
3. Open the phone application and start the setup process.

Application Setup

It's fine if you don't input all the correct information the first time you open the app. Everything can be updated later if needed.

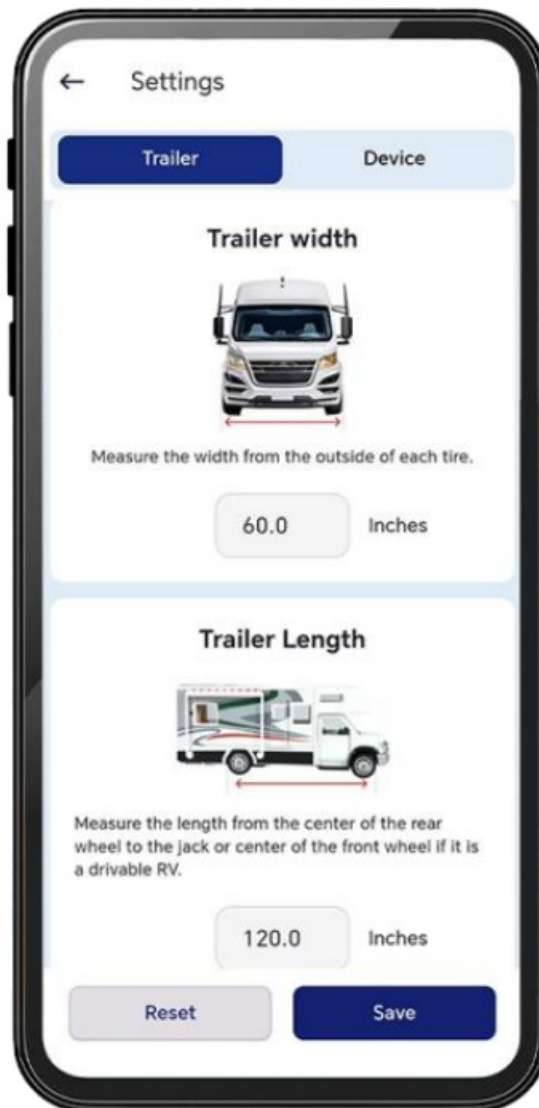
Trailer setting

1. Access settings through the gear icon in the top right corner of the app.
2. **Select Your RV Type**
 - Selecting your RV type will not affect measurement accuracy, only affect the Top view display
 - If your RV has 3 fulcrum points when stationed, select the 'Travel Trailer' type



Vehicle Measurements

- Within “Trailer Settings”, scroll down to Trailer Width and Trailer Length
- Trailer Width: Measure the width from the outside of each tire. Input the measurement in the box.
- Trailer Length:
 - Travel Trailer: Measure the length from the center of the rear wheel to the jack.
 - Drivable (Class A, B, C): Measure the length from the center of the rear wheel to the center of the front wheel.
- Input the measurement in the box.
- Click the “Save” button



Device setting

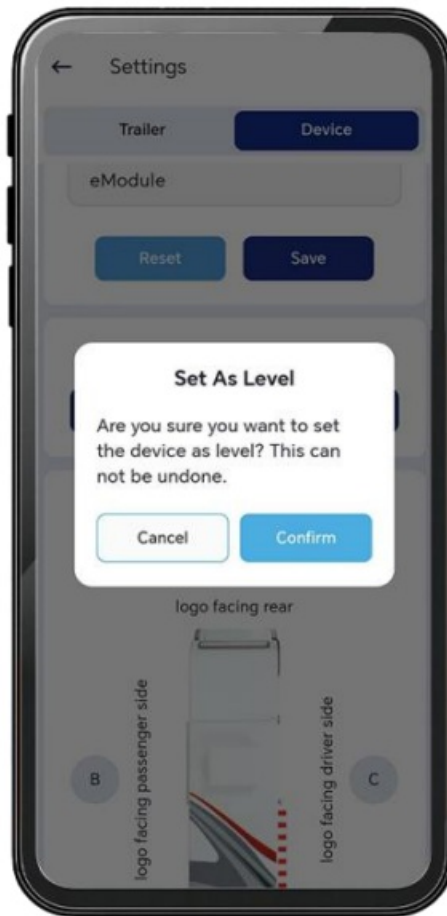
Unit Installation Location

- Within "Device Settings", scroll down to Unit Installation Location
- You need to select where the logo is facing. For example if it is on the Driver Sidewall, with the logo facing the Passenger's Side, select Facing Passenger Side. However, if it is installed on the side of a cabinet that happens to be along side the Passenger Side, but the logo faces the rear of the RV, select Facing Rear
- Once you make the proper selection, click the "Save" button



Set Your Trailer As Level

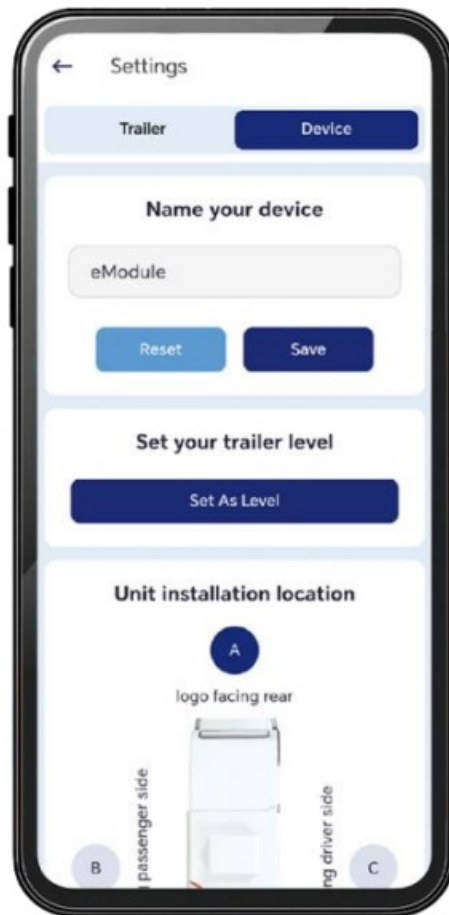
- This step must be done before you use the unit at a campground.
In this setting, you are calibrating the device at the point it will always remember as level.
- Calibrate procedure:
 1. Make sure the device is already installed on your RV wall. If not, go back and follow the instructions to install the unit.
 2. Take your RV to very level ground and use traditional methods such as a bubble level to confirm it is level all around: front to back and side to side.
 3. Navigate to Device Settings and click the “Set As Level” button. It will ask you to confirm, then click “Set As Level” again.
 4. If you switchback to the leveling screens, you will see both Roll and Pitch at 0.00” as the device is now calibrated to know this position as perfectly level.
 5. **IMPORTANT NOTE:** Be very careful when using this button. For example, If it is calibrated as perfectly level and then you take it to unlevel ground, press the button again intentionally or accidentally, it will now think this unlevel position is level.



Tips: Generally, you only need to make this selection once with the initial setup of the app and never have to touch it again. However, you can always do it again in settings if needed.

Rename Device

In device Settings, you can always rename your device to whatever name you want. Enter a new name and press Save. When you open the app again to search the device, you will find the device you named.



Using The Application

Leveling Screen Overview

1. There are three main leveling screens: Roll, Pitch, top
 - Roll displays side to side measurements.
 - Pitch displays front to back measurements.
 - Top displays show the the recommended adjustment height for each support point.

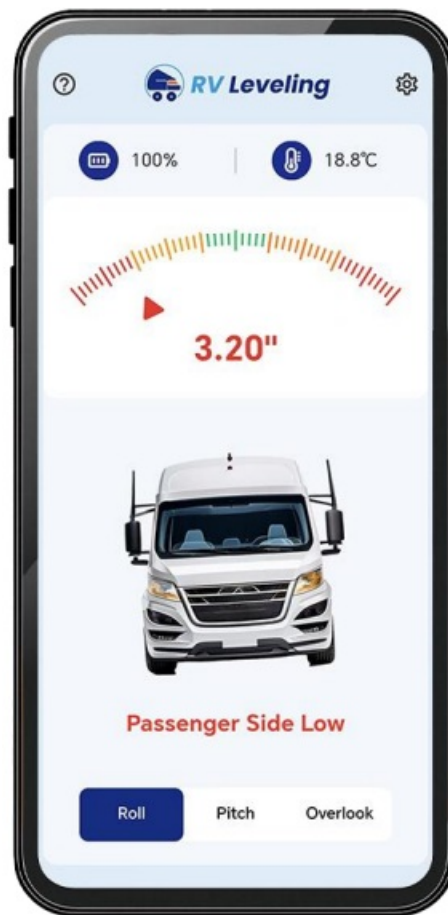


2. Each screen has a gauge, measurement number, vehicle image, and text guides at the bottom. These all work together to make the leveling process as easy as possible
- The pointer, scale values, and images will all reflect the level status of your RV in real time
 - As shown in the right image, the Roll interface pointer scale indicates that the right side is 2.25 degrees lower, with a text "Passenger side low" making it more clear to use.
 - The gauge, measurement, and text are designed with three color zones It displays red if you are over 3" from level, yellow if 1" to 3" from level, and green if within 1"of level.



3. Roll

- Measures side to side leveling
- Text guides display “Driver Side Low” or “Passenger Side Low”
- Arrow on the right side of the gauge means Driver Side Low and arrow on the left side of the gauge means Passenger Side Low.
- The vehicle image is a front view image, showing the front of the RV, i.e. driver’s side is the right side and passenger’s side is the left side.



4. Pitch

- Measures front to back leveling
- Text guides display “Front Low” or “Front High”, since all measurement adjustments are made at the front.
- Arrow on the left side of the gauge means Front High and arrow on the right side of the gauge means Front Low.



5. Overlook

- Measure the level height difference at the RV holders.
- An arrow next to a holder pointing upwards suggests raising the holder, while an arrow pointing downwards suggests lowering the holder. The number indicates the recommended adjustment height
- It is recommended to adjust one holder at a time. Adjusting any holder will affect all recommended adjustment heights.



6. Settings, User manual, Contact, Etc.

- Settings can be accessed with the gear icon in the top right
- User manual, Contact, Etc. can be accessed with the gear icon in the top left
- Battery percentage is displayed on the main screen
- The current temperature the device is detecting is also on the main screen

Leveling Your RV

Now ready to begin leveling your RV with the application. Leveling Method 1 roll screen & pitch screen

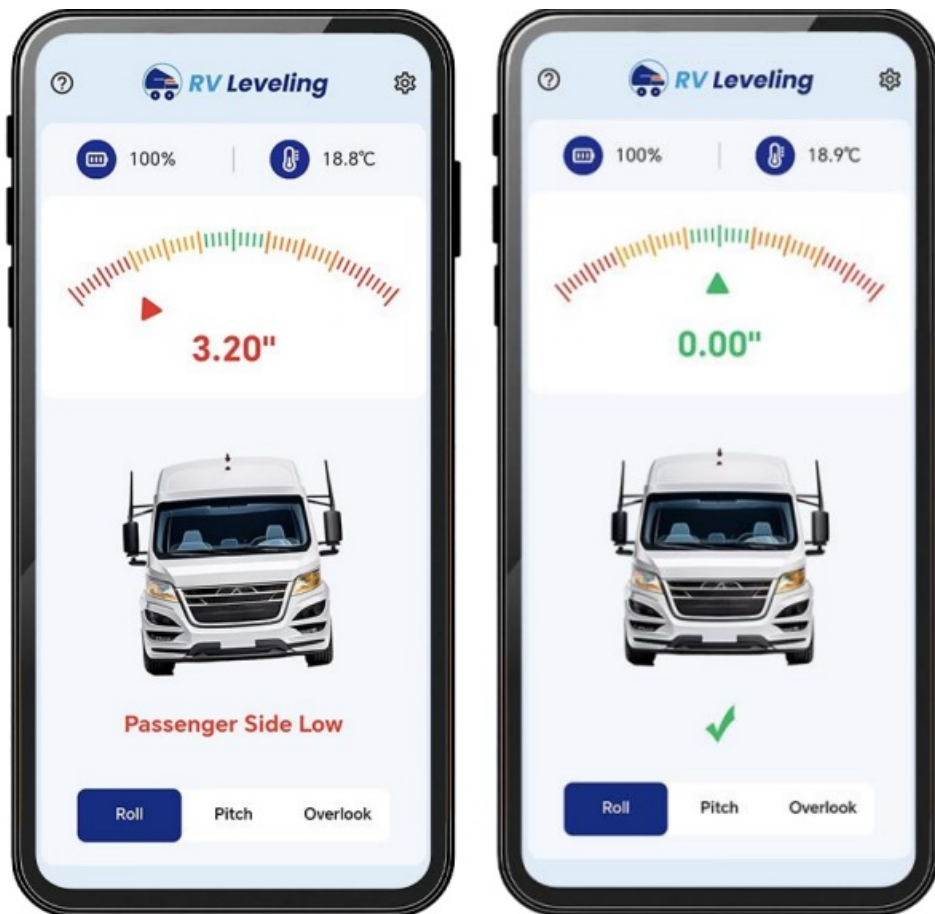
1. Pulling Into The Campsite

- When you first pull into your campsite, open the app and check the Roll and Pitch screen measurements. Some campsites are perfectly flat, while others are not, or may have some random variation.
- Try to pull your camper onto the most level part of the campsite as possible to minimize the adjustments that you have to make

2. Leveling Side To Side

- Open the roll screen and check the measurements. In this example, the passenger side is low by 3.20"
- Put your leveling ramps under the passenger side tire and drive up on them slowly. You'll see the number get closer to 0.00" side and then chock the levelers in place to hold that position. It will show "✓" when it direct to 0.00".

3.



Leveling Front to Back.

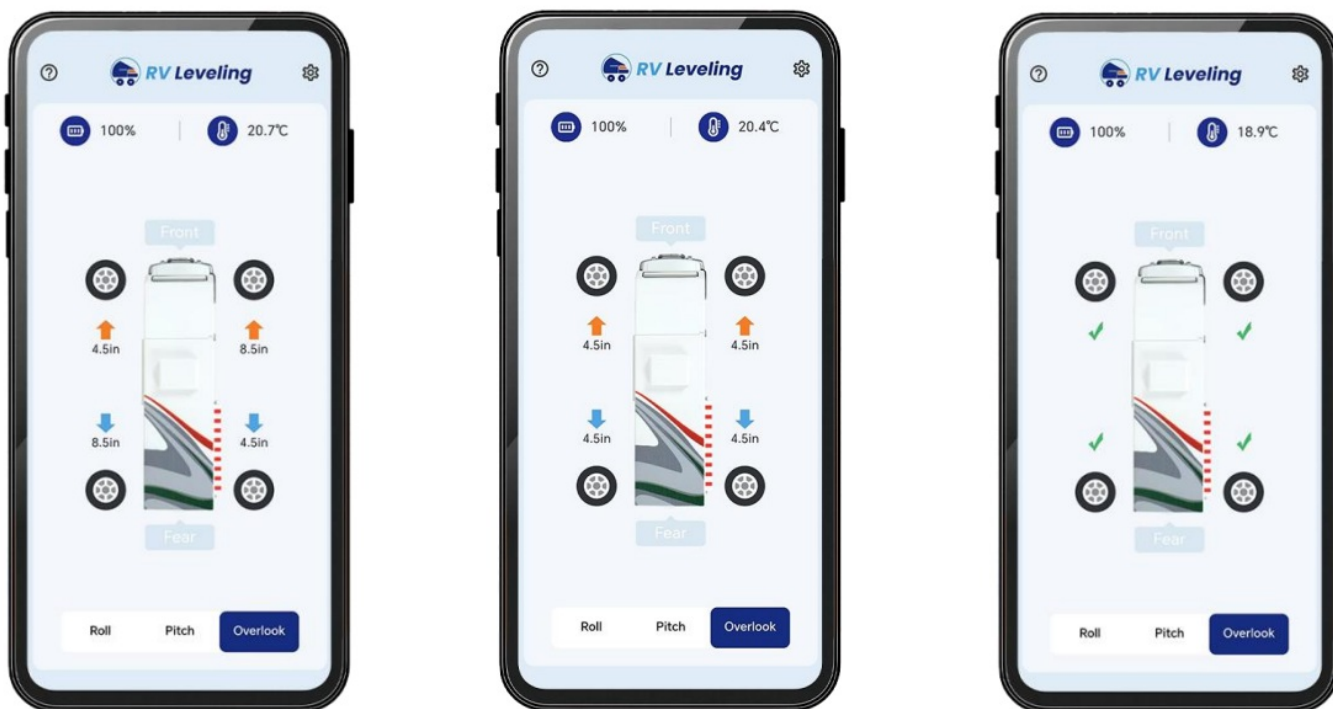
- Now that roll is level, open the pitch screen and check the measurements
- Use the tongue jack to raise or lower the front. You'll see the number get closer to 0.00"
- Get it close to 0.00" it will show "✓" and you are finished
- Your RV is now level side to side and front to back.



Leveling Method 2 Overlook view screen

Overlook view

- Pulling your RV into the campsite
- Open the Overlook screen and check the measurements
- Chose the tire or the holder which easier for you to adjust, Adjust the height follower the top screen measurements
- In this example, you can adjust the Right front tire first.
- Put your leveling ramps under the Right front tire and drive up on them slowly. You'll see the low side number get closer to the other side
- Use the tongue jack to raise the front. You'll see the measurements get closer to 0.00", It will show "✓" and you are finished.



Troubleshooting Guides

1. Device Not Connecting

If you are having trouble connecting the device to your phone, follow the below steps:

- Batteries: Make sure batteries are installed, installed correctly.
- Switch: Make sure the switch is in “on” position.
- Wireless Connection: Make sure your phone is in range of the wireless connection of the device. Move your phone closer to the device and refresh to see if the device shows. It has great wireless connection range, but is still something you should check and rule out when troubleshooting.
- Location Services (Android Only): Make sure your Location Services are turned on. This is an Android requirement for some phones. If Location Services are turned off, you may not be able to connect.
- Already Connected: If the device is actively connected to another person’s phone, it will not show as available when trying to connect to a new phone. Make sure it is not currently connected to another phone. If another phone is connected, close the app on that phone to make the device available for connection to a new phone again.
- Restart the device: If none of the above work, turn off the switch to “off” position, wait 10 to 15 seconds and turn on the switch. This disconnects the device from any phone and makes it available for connection again. Close and reopen the app and on the connect to a device screen, it should be available.

If you are still not able to connect to the device, contact us youngood2000@gmail.com

2. Incorrect Measurements

If the device is showing incorrect measurements, check the below to see if it fixes the issue.

- Vehicle Measurements: Go into settings and make sure your vehicle measurements are entered correctly, both front to back and side to side. Revisit that section of the user manual for how to properly measure your RV. Check for typos in the settings of the app to make sure you entered the numbers correctly. This can greatly throw off the readings.
- Installation Location: Go into settings and make sure you have the correct installation location selected. If your device is on the passenger wall facing the driver’s side, select “Logo Facing Driver Side”. If your

device is on a cabinet, for example, on the passenger side wall, but faces the front of the RV, select “Logo Facing Front” . This is extremely important and can throw off readings if selected incorrectly.

- Calibration: If improperly calibrated (when you set it as level), it will always have the wrong “Level” reference point. This is very important because if you set it as level in the app when the RV is not in fact level, it will give you incorrect readings. If you think this is the issue, take your RV to extremely level ground and check the reading. If you need to, repeat the steps to Traditional level your RV and recalibrate it “set as level” within the app.

FCC STATEMENT

1. This device complies with Part 15 of the FCC Rules. Operation is subject to the following two conditions:
 1. This device may not cause harmful interference.
 2. This device must accept any interference received, including interference that may cause undesired operation.
2. Changes or modifications not expressly approved by the party responsible for compliance could void the user’s authority to operate the equipment.

NOTE: This equipment has been tested and found to comply with the limits for a Class B digital device, pursuant to Part 15 of the FCC Rules. These limits are designed to provide reasonable protection against harmful interference in a residential installation. This equipment generates uses and can radiate radio frequency energy and, if not installed and used in accordance with the instructions, may cause harmful interference to radio communications. However, there is no guarantee that interference will not occur in a particular installation. If this equipment does cause harmful interference to radio or television reception, which can be determined by turning the equipment off and on, the user is encouraged to try to correct the interference by one or more of the following measures:

1. Reorient or relocate the unit.
2. Increase the separation between the equipment and receiver.
3. Consult the dealer or an experienced radio/TV technician for help.


FCC Radiation Exposure Statement

This equipment complies with FCC radiation exposure limits set forth for an uncontrolled environment. This equipment should be installed and operated with minimum distance 20cm between the radiator & your body.

Contact Us

If you have any questions, You can contact us By email: youngood2000@gmail.com

Documents / Resources

	<p>Beech Lane A05 Wireless RV Leveling System [pdf] Instruction Manual 2BN6W-A05, 2BN6WA05, A05 Wireless RV Leveling System, A05, Wireless RV Leveling System, RV Leveling System, Leveling System, System</p>
-------------------------------------------------------------------------------------	------------------------------------------------------------------------------------------------------------------------------------------------------------------------------------------------------------------------------------

References

- [User Manual](#)

[Manuals+](#), [Privacy Policy](#)

This website is an independent publication and is neither affiliated with nor endorsed by any of the trademark owners. The "Bluetooth®" word mark and logos are registered trademarks owned by Bluetooth SIG, Inc. The "Wi-Fi®" word mark and logos are registered trademarks owned by the Wi-Fi Alliance. Any use of these marks on this website does not imply any affiliation with or endorsement.