



## BeaverLAB DDL-MX Intelligent Microscope Instruction Manual

[Home](#) » [BeaverLAB](#) » BeaverLAB DDL-MX Intelligent Microscope Instruction Manual 

*BeaverLAB DDL-MX Intelligent Microscope Instruction Manual*

# BeaverLAB Intelligent Microscope MX

## DDL—MX Instruction Manual

Please read this user manual carefully! Better reading experience!

Please keep the manual properly!

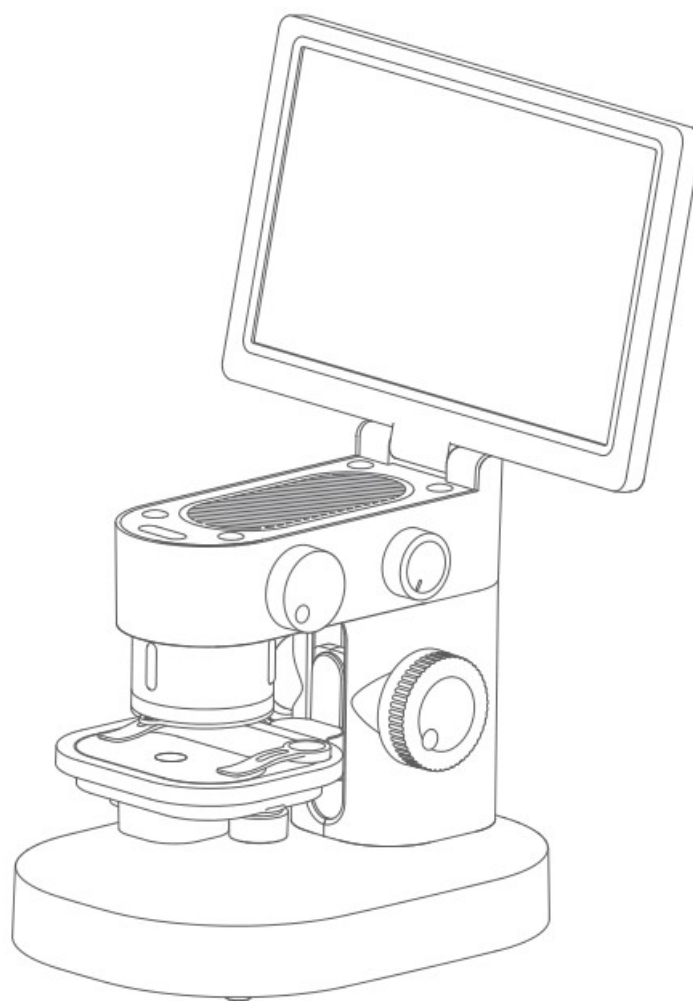


## Contents

|    |  |
|----|--|
| 1  | 1 Product Overview                           |
| 2  | 2 Instructions For Use                       |
| 3  | 3 Instructions For Microscope                |
| 4  | 4 Instructions for using the microscope      |
| 5  | 5. Interface User Guide                      |
| 6  | 6 Function Description Of External Equipment |
| 7  | 7 Accessories And Tools                      |
| 8  | 8 Troubleshooting Of Microscope              |
| 9  | 9 Trademark And Legal Declaration            |
| 10 | 10 Product Warranty Description              |
| 11 | 11 Documents / Resources                     |
|    | 11.1 References                              |
| 12 | 12 Related Posts                             |

## 1 Product Overview

- Thank you for purchasing BeaverLAB intelligent microscope, hereinafter referred to as microscope.
- Please read this manual carefully and keep it properly before use. Do not use the microscope without any instructions.



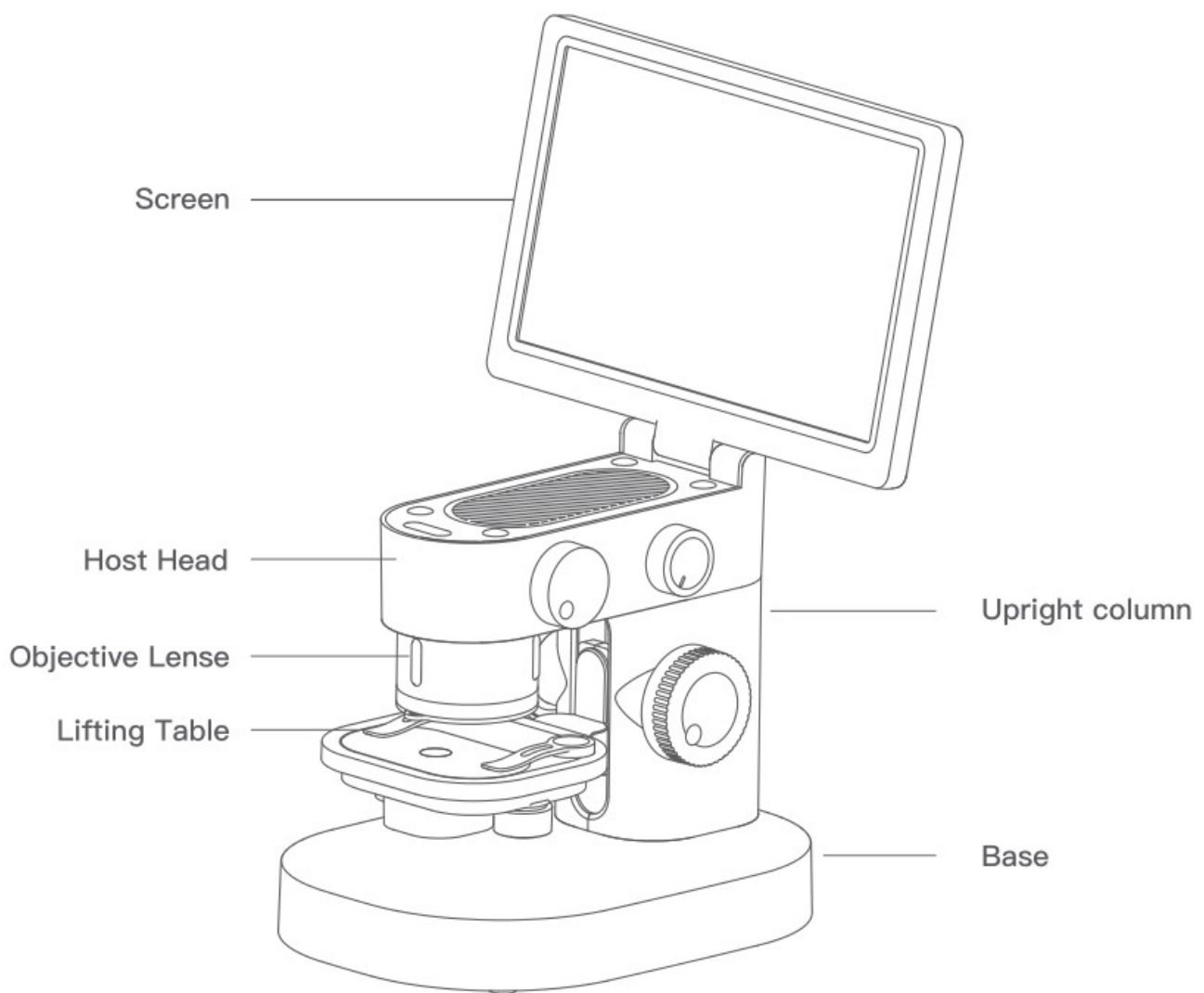
## 2 Instructions For Use

- Please read this manual carefully and use it correctly.

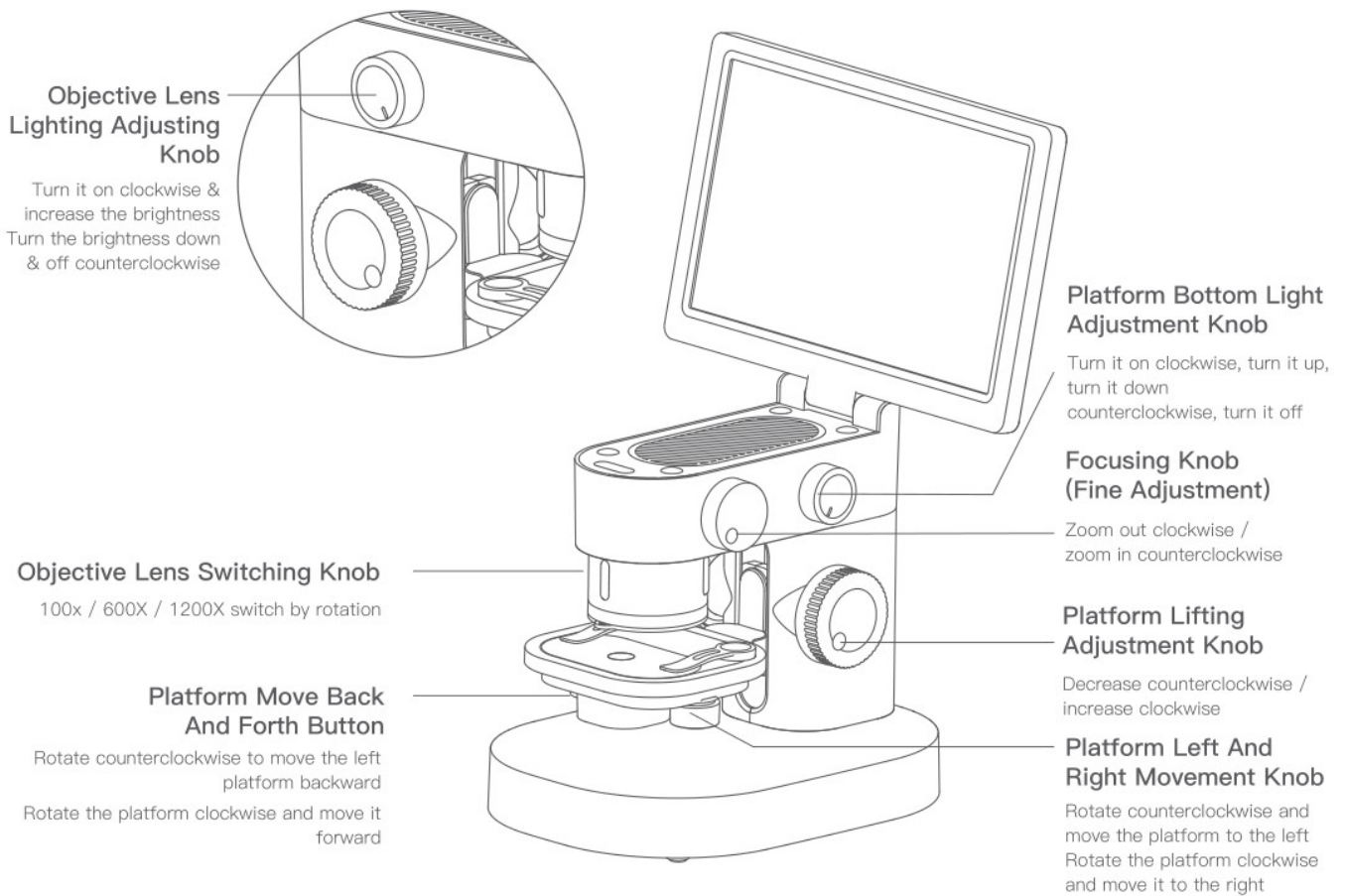
- Pay attention to protect the lens. Be sure to close the lens cover after using, avoid entering dust or foreign matters.
- Pay attention to protect the display screen. Please close the screen after using, avoid damaging the display screen.
- The observation table of this microscope is a lifting table. Please keep the table clean and do not press it heavily.
- When placing specimens or other observation objects, pay attention to the placement position and place them in the center accurately below the lens as far as possible. Avoid being unable to see objects and bring a bad experience.
- Import of external files is not supported (external files such as videos, pictures, and documents do not support import and reading, which may cause the device to malfunction.)

### 3 Instructions For Microscope

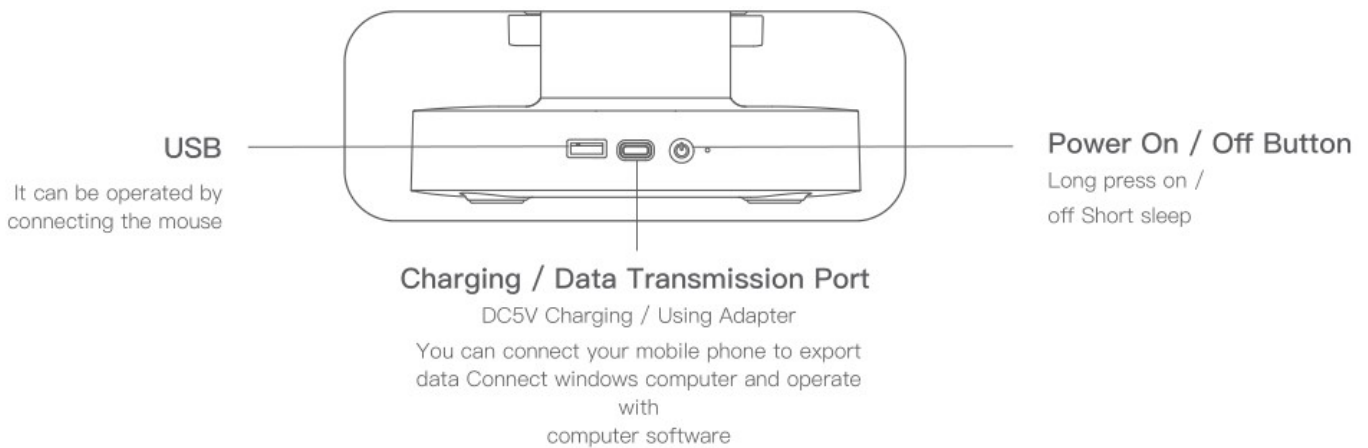
#### Microscope Composition



#### Knob Function Description



## Interface Usage



## Use Environment



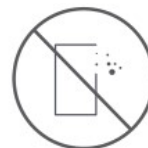
Please use it at -10 °C ~ 45 °C



Please prevent the microscope from getting wet by water, beverages and corrosive lampliquids



Please keep the microscope away from heat source, open fire, flammable and explosive gas (liquid)



Please avoid dust entering the microscope lens and inside

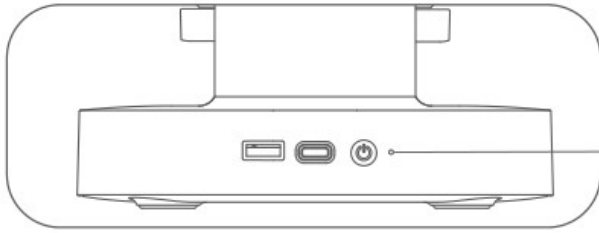


Please avoid the impact and violent vibration of the microscope

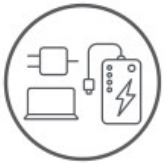
- At low temperature, the available capacity of the battery will decay to varying degrees.

- In case of any abnormality, please contact the after-sales department for maintenance. Disassembling the microscope without permission will not enjoy the warranty policy and may lead to irreparable damage.

### Charging Instructions



The red light is always on during charging and the green light is always on after charging



Can use daily mobile phone charger, computer The power bank charges the microscope.



Do not charge for more than 12 hours, Avoid affecting the service life of the battery.

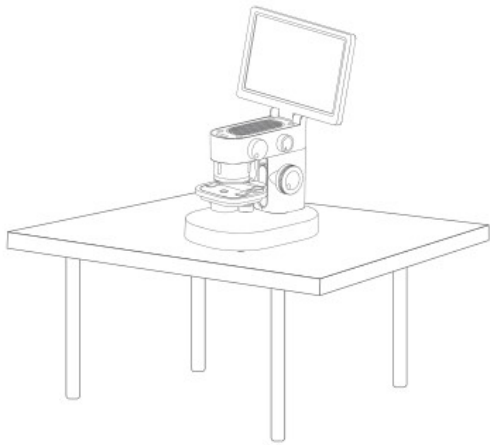
- During charging, if the microscope shell and battery have slight heating, it is normal. Please rest assured to use it

### Storage Environment

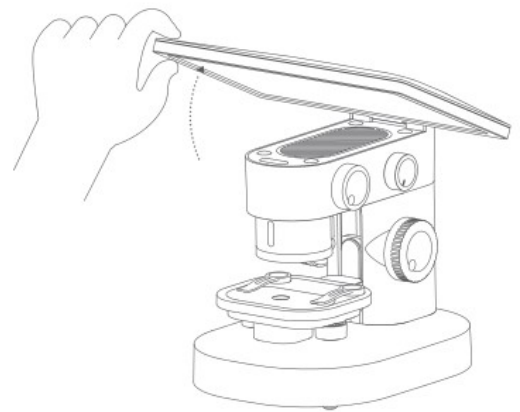
- Store in a cool and dry place for daily use and avoid direct sunlight.
- Avoid storing the microscope in a place where there is a risk of falling, which may cause lens deviation inside the microscope or damage to other components, as well as other irreparable defects damage problem.

### 4 Instructions for using the microscope

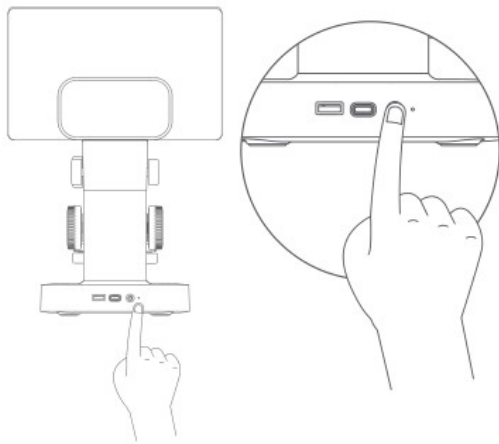
1. Place Stably



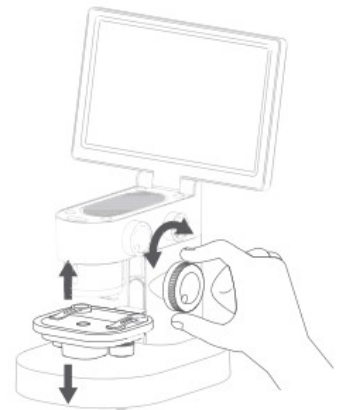
2. Open the screen



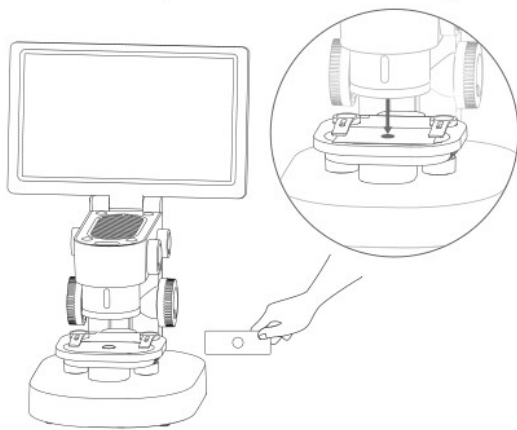
3. Press the on / off button for a long time to start the machine



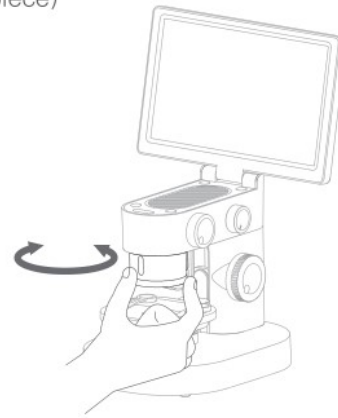
4. Move the platform to a suitable



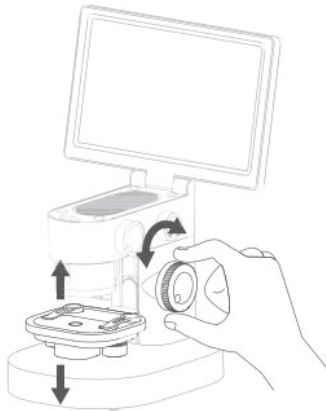
5. Remove the lens cover and put in the observation items (note that the specimen should be facing the eyepiece)



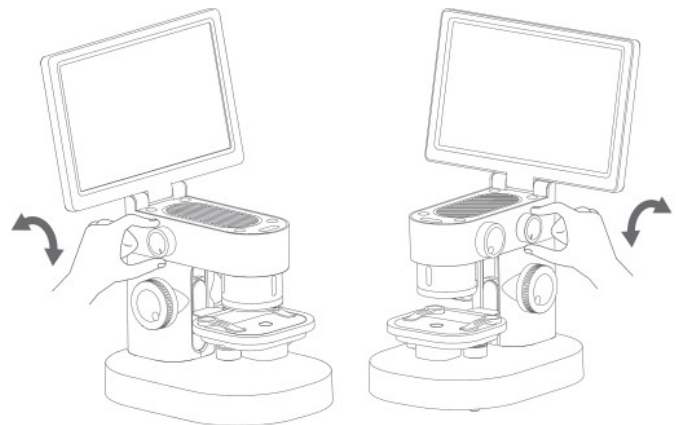
6. Select the multiple to be observed (note that the specimen should be facing the eyepiece)



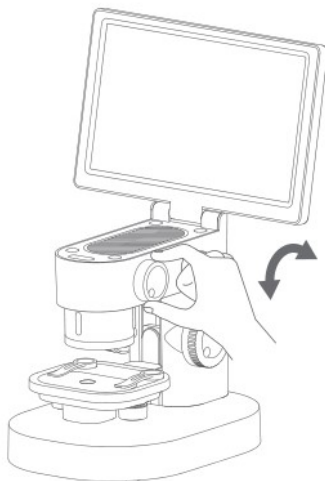
7. Raise the platform to a suitable height



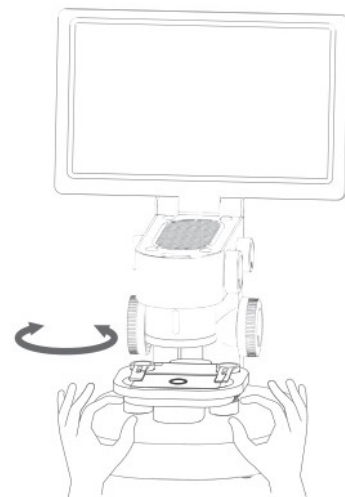
8. Adjust the intensity of bottom lighting and top lighting



9. Focus through the focusing knob and observe the display screen to a clear position



10. The observation position can be moved by adjusting the moving knob under the platform



The Pithy Formula For Microscope Use: large multiples should be close and small multiples should be far away. Coarse adjustment depends on lifting and fine adjustment depends on knob (coarse adjustment can be fine adjusted after seeing the observation object)

### Use Of Specimen Holder



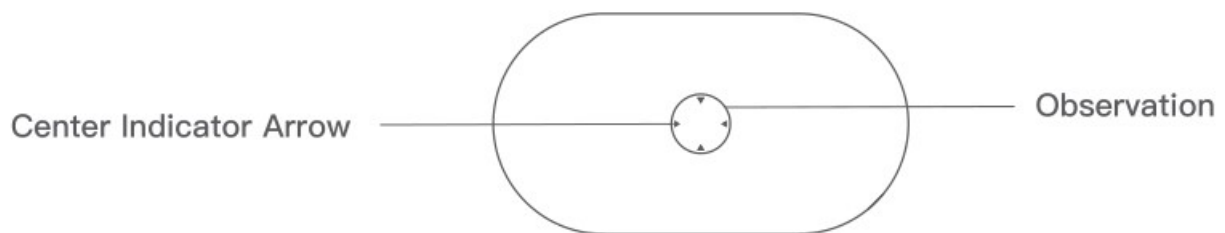
### Specimen Fixing Clip

Fixed specimen or observation target

### Matters Needing Attention:

- The fixing clip adopts magnetic suction type, which can be absorbed in place as long as it is installed close to the base.
- The adsorption positions at the bottom and base of the specimen fixing clip shall be cleaned regularly to avoid adsorption of other metal substances.

### Use Of Observation Panel



### Matters Needing Attention:

- The observation panel shall be wiped regularly to avoid oil stain or other stains affecting the observation experience.

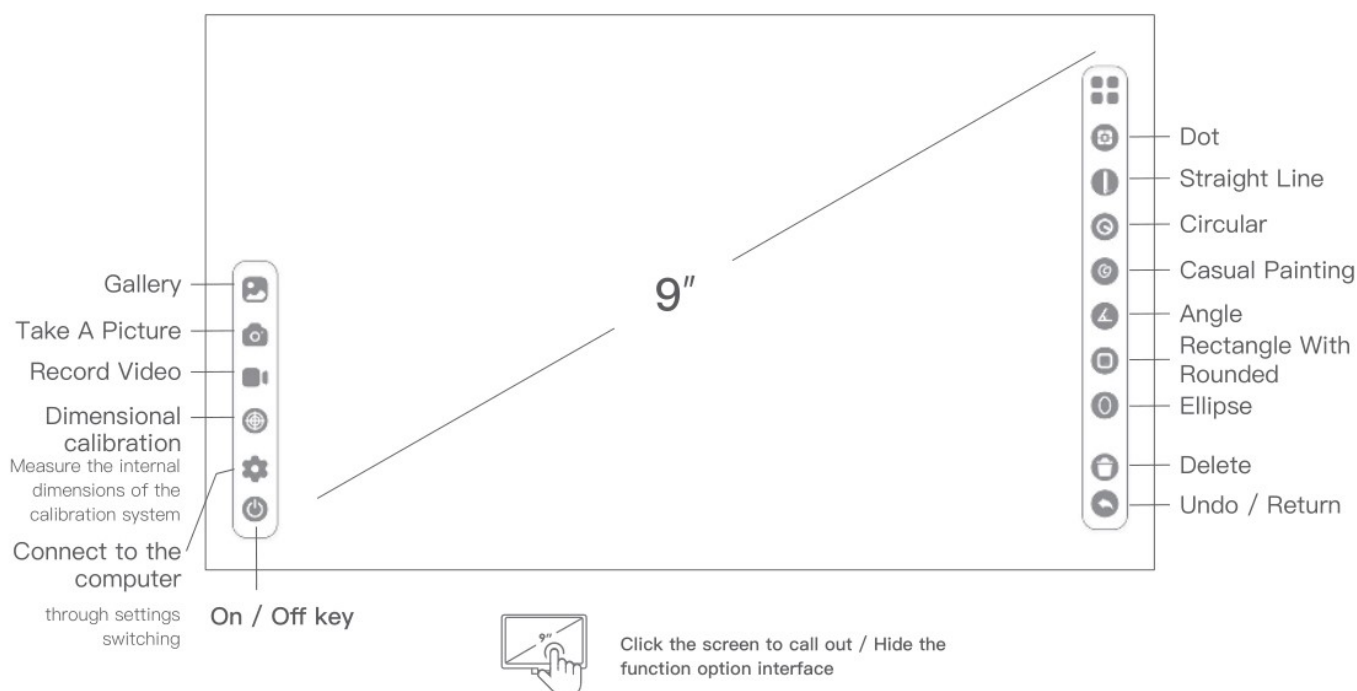
### Description of light adjustment function of observation window

If the light becomes stronger and weaker, the outline and details of the specimen will have different effects. Please pay attention to the adjustment and use.

## 5. Interface User Guide

### Software interface function introduction





### Gallery

Observe, browse and edit the photographed Pictures and videos.



### Take A Picture

Take pictures of the currently observed objects.



### Record Video

Take a video of the currently observed object



### Dimensional calibration

Measure the internal dimensions of the calibration system



### Set Up

Language: Chinese / English  
Time :time/ date Sleep: never / 3 min / 5 min / 10 min / 15 min  
Timed Shutdown: never / 5 min/ 10 min / 30 min / 1 hour  
Memory Card Switching: in / out  
Camera Switching: in / out  
Color Selection: blue, green, red, yellow, purple



### Shut Down

Turn off the device



### Grid

locate the center point of the image



### Straight Line

Measure the length of the observation object



### Circular

Measure the S (area) of the selected range C (perimeter), D (diameter)



### Casual Painting

Tagging



### Angle

Measure the angle of the observation object



### Rectangle with rounded corners

Measure s (area) c (perimeter) of the selected range



### Ellipse

Measure s (area) and d(diameter) of the selected range



### Delete

Delete all dimensions on the interface



### Undo / Return

Undo the previous action

## 6 Function Description Of External Equipment

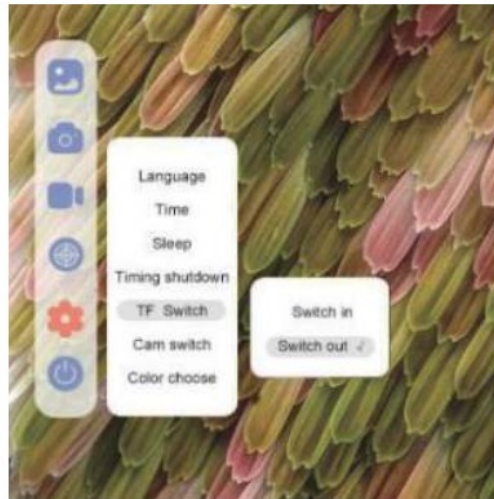
### Connect To Mobile Phone

**Purpose:**

Read the pictures in the microscope memory with the mobile phone or copy them to the mobile phone.

**Operation method:**

- ① Plug the data cable into the DC5V charging port of MX microscope, plug the adapter into the mobile phone end, and connect the data cable with the adapter.
- ② Open the MX microscope and click: Setting → Memory card switching → Cut out in sequence. At this time, the screen will darken.



- ③ Open the mobile phone File manager. At this time, you can see a USB storage device. After opening, you can see all the pictures in the memory of MX microscope.

**Computer Device Connection**

Visit [www.dangdangli.com](http://www.dangdangli.com) Download and install the software installation package

**Purpose:**

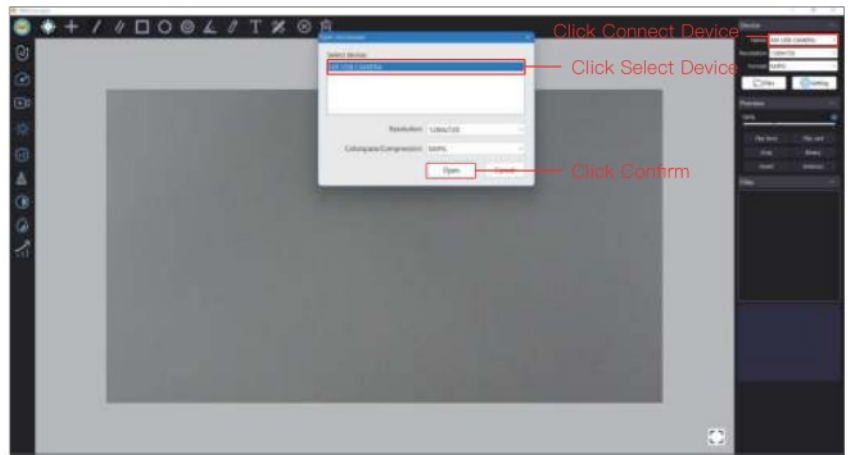
Directly connect to the computer, use the computer software to observe and operate, and the screen is larger.

**Operation Method:**

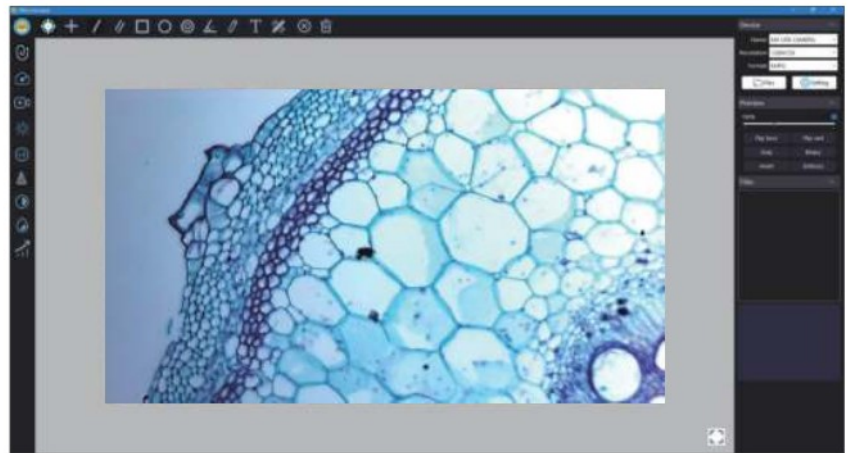
- ① Plug the data cable into the DC5V charging port of MX microscope, and connect one end to the USB interface of computer.
- ② Open BeaverLAB computer software (only windows computers are supported).
- ③ Open the MX microscope and click:  
Setting → Camera Switching → Cut Out, and the screen darkens at this time.



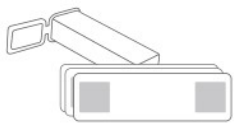
④ In the computer software, click: connect device button  
 → select device (select the recognized camera device)  
 → open



⑤ At this time, the software on the computer side is directly connected to the camera, so you can use the computer to observe directly.



## 7 Accessories And Tools



Prepared Slides x10



Adapter



Data Line



Magnetic specimen holder x2


## 8 Troubleshooting Of Microscope

| Problem Phenomenon                        | Reason   | Processing Method                                    |
|---|--|--|
| Lifting is not smooth /<br>Unable to lift | During charging, the current is large and the calorific value of the battery is high, which is a normal phenomenon | Normal state   |
| Lifting is not smooth /<br>Unable to lift | Internal lifting gear damaged  | Send for repair                                      |
| The light cannot be adjusted              | Dimmer circuit board damaged / Lamp board damaged /<br>Connecting wire open circuit                                | Send for repair                                      |
| The device cannot be charged              | ① The charging interface is not firmly plugged in ② No power connection<br>③ Equipment failure                     | ①Unplug the interface ②Connect the power ③For repair |

|   |   |   |
|---|---|---|
| The device cannot be used normally  | Internal damage of equipment due to water spray, collision and other reasons  | Send for repair *Man made damage is not covered by warranty   |
| The device cannot be connected to the computer software                   | The interface is not plugged tightly, the data line is damaged, and the connecting line with data transmission function is not used | Reseat the interface, replace the data cable, replace the data cable with data transmission function, and then connect it for use |
| Lens display image blur   | The ambient temperature changes sharply, causing the lens to fog  | Wait for the temperature to be constant and use it after the fog disappears for a period of time                                  |
| There are foreign bodies in the specimen and the observation is not clear | The surface of the specimen is dirty, and the panel is dirty  | Wipe the surface of the specimen and the surface of the observation panel   |
| The shell is broken and cracked due to falling and impact                 | Damage caused by external use   | Man made damage is not covered by the warranty  |
| The product cannot be turned off or the key fails                         | Crash   | Please reset and restart  |

## 9 Trademark And Legal Declaration



“”, “BeaverLAB” is a trademark applied for or registered in Chinese Mainland by Beaver

Technology Co., Ltd. and is used on this product use. Without the permission of the trademark owner, no person or institution may use the above trademark logo on unapproved goods without authorization.

This manual is made and copyrighted by Beaver culture and innovation technology (Shenzhen) Co., Ltd. no organization or individual may copy or distribute all or any part of this manual without permission.

Due to the continuous improvement of product functions, design changes and other reasons, this manual may be inconsistent with the products you purchased. Please take the actual products as the standard. Product executive standard: GB 4943.1-2011 GB / T 9254-2008

## 10 Product Warranty Description

### 1. Warranty Period

1. Within 7 days from the day after you sign for it, if the product has any performance failure listed in the performance failure table of BeaverLAB intelligent microscope products, you can enjoy the return or replacement service free of charge after being tested and determined by BeaverLAB after-sales service center;
2. Within 8-15 days from the next day after you sign for it, if this product has any performance failure listed in the performance failure table of BeaverLAB intelligent microscope products, it can enjoy the replacement or maintenance service free of charge after being tested and determined by BeaverLAB after-sales service center;
3. Within 6 months from the day after you sign for it, this product has the performance faults listed in the performance fault table of BeaverLAB intelligent microscope products. After being tested and determined by BeaverLAB after-sales service center, you can enjoy the maintenance service free of charge.

Friendly Tip: because the packing box needs to be used during transportation to ensure the safety of product transportation, it is recommended that you keep the packing box for at least 30 days from the date of signing.

### 2. Warranty Content

The host is guaranteed for 6 months.

### 3. Non Warranty Regulations

1. Unauthorized maintenance, misuse, collision, negligence, abuse, liquid inlet, accident, modification and other incorrect use methods, or tearing, altering labels and anti-counterfeiting marks;
2. The warranty period has expired;
3. Damage caused by force majeure;
4. It does not comply with the performance faults listed in the performance fault table of BeaverLAB intelligent microscope products;
5. Due to human factors, this product and its accessories have the performance faults listed in the performance fault table of BeaverLAB intelligent microscope products.

### Overall Parameters Of Microscope

|                      |                               |
|----------------------|-------------------------------|
| Product Brand:       | BeaverLAB                     |
| Product Name: Beav   | BeaverLAB Smart Microscope MX |
| Product Model:       | DDL-MX                        |
| Product Color:       | Gray/ White/ Yellow           |
| Battery Capacity:    | 3500mAh                       |
| Texture Of Material: | ABS+PC                        |

### Intelligent Microscope MX

**Product Name:** Intelligent microscope MX

**Product Model:** DDL-MX

**Product Size:** 214x224x324mm

**Input Voltage:** DC5V 1A

**Battery Capacity:** 3500mAh

**Display Size:** 9 inches

**Brand Name:** BeaverLAB


**Executive Standard:** CE FCC

**Brand Company:** Beaver Technology (Shenzhen) Co., Ltd.


**Service Mailbox:** [support@beaverlabtech.com](mailto:support@beaverlabtech.com)

Please refer to BeaverLAB official website for more information of this product : [www.beaverlabtech.com](http://www.beaverlabtech.com) / [www.dangdangli.com](http://www.dangdangli.com)

### Documents / Resources

|  |   |
|--|---|
| <div> <div>BeaverLAB Intelligent Microscope MX</div> <div>  </div> </div> | <div> <div>BeaverLAB DDL-MX Intelligent Microscope [pdf] Instruction Manual</div> <div>DDL-MX Intelligent Microscope, DDL-MX, Intelligent Microscope, Microscope</div> </div> |
|--|---|

References

- 
[BEAVERLAB](#)
- 
[- \[ \] \[ \] \[ \]](#)