

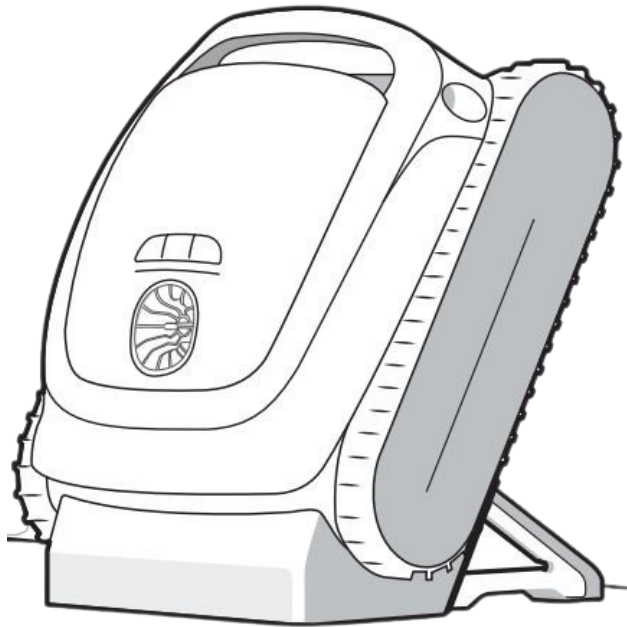


## Contents [ [hide](#) ]

- 1 Beatbot RCDS01-RCDS02 Robotic Pool Cleaner
- 2 Product Information:
- 3 Product Usage Instructions
- 4 Frequently Asked Questions (FAQ)
- 5 Safety Regulations
- 6 FCC/IC Statement
- 7 Packaging accessories
- 8 Product Structure Diagram
- 9 Product Specifications
- 10 Robot buttons
- 11 APP
  - 11.1 Instructions for Using the APP
- 12 Product Operation
- 13 Lighting Effects
- 14 Maintenance and Replacement
- 15 Storage
- 16 FAQ
- 17 After-sales Service
- 18 WEEE Information
- 19 Documents / Resources
  - 19.1 References



**Beatbot RCDS01-RCDS02 Robotic Pool Cleaner**



## Product Information:

### Specifications:

- **Product Name:** AquaSense
- **Age Recommendation:** 8 years and above
- **Usage:** Robotic pool cleaner
- **Safety Regulations:** Follow all safety instructions provided
- **Manufacturer Recommended Supply Unit:** RCDS01/RCDS02

## Product Usage Instructions

### Safety Precautions:

Before using the AquaSense robotic pool cleaner, ensure you read and understand all safety instructions provided in the user manual.

### Installation:

1. Ensure the robot is turned off and the charge dock is unplugged before performing any maintenance.
2. Do not place the charge dock near a heat source.
3. Follow all charging instructions provided.

### Operation:

1. Only use with the specified supply unit recommended by the manufacturer.
2. Keep children and pets at a safe distance from the robotic pool cleaner during operation.
3. Avoid unintentional starting by ensuring the robot is turned off before picking it up or carrying it.
4. If the robot needs to be pulled out underwater, use the supplied hook carefully to avoid injury.

### **Maintenance:**

Cleaning and maintenance should not be done by children without supervision. If the supply cord is damaged, it must be replaced by qualified personnel to avoid hazards.

### **Battery Safety:**

Avoid using damaged or modified batteries. If battery liquid comes in contact with skin or eyes, rinse immediately with water and seek medical attention.

### **Service and Repair:**

Do not attempt to repair or modify the appliance or battery yourself. Have servicing performed by qualified technicians using only identical replacement parts.

## **Frequently Asked Questions (FAQ)**

- **Can children operate the AquaSense robotic pool cleaner?**

Children aged 8 years and above can use the product under adult supervision to ensure safe operation and avoid risks.

- **What should I do if the battery is damaged?**

Do not use a damaged battery. Contact qualified technicians for battery replacement to prevent unpredictable behavior.

- **How should I store the AquaSense robotic pool cleaner?**

Store the cleaner in a safe place away from heat sources and follow all storage instructions provided in the user manual.

## **Safety Regulations**

## **IMPORTANT SAFETY INSTRUCTIONS**

## READ ALL INSTRUCTIONS BEFORE USING

When installing and using this electrical equipment, basic safety precautions should always be followed, including the following:

**WARNING:** Read all safety warnings and instructions. Failure to follow the warnings and instructions may result in electric shock, fire, and/or serious injury.

### Warnings and Cautions

- READ AND FOLLOW ALL INSTRUCTIONS.
- This product can be used by children aged 8 years and above and persons with physical, sensory, or intellectual deficiencies, or limited experience or knowledge, under the supervision of a parent or guardian to ensure safe operation and to avoid any risks. Cleaning and maintenance shall not be done by children without supervision.
- Children shall not play with this product. Ensure children and pets are kept at a safe distance from the robotic pool cleaner while it is in operation.
- Prevent unintentional starting. Ensure the robot is turned off before picking up or carrying it. Carrying the robot with your finger on the power button invites accidents.
- Under abusive conditions, battery liquid may be expelled. Avoid contact. If contact occurs, rinse with water. If liquid contacts the eyes, seek medical attention. Battery liquid may cause irritation or burns.
- Do not use a battery or appliance that is damaged or modified. Damaged or modified batteries may exhibit unpredictable behavior resulting in fire, explosion or risk of injury.
- Do not use any third-party battery or charge dock. Use only with RCDS01/RCDS02 supply unit specified by the manufacturer. If the supply cord is damaged, it must be replaced by the manufacturer, its service agent or similarly qualified persons in order to avoid a hazard.
- Make sure the robot is turned off and the charge dock is unplugged before performing maintenance.
- Do not place the charge dock near a heat source. Follow all charging instructions and do not charge the appliance outside of the temperature range specified in the instructions. Charging improperly or at temperatures outside of the specified range may damage the battery and increase the risk of fire.

- This product contains batteries that can only be replaced by qualified technicians. Do not modify or attempt to repair the appliance or the battery except as indicated in the instructions for use and care. Have servicing performed by a qualified repair person using only identical replacement parts. This will ensure that the safety of the product is maintained.
- Do not enter the pool while the robot is working in water.
- When the robotic pool cleaner is underwater or in other scenarios where it is not convenient to lift the robot directly, it needs to be pulled out using the supplied hook. Please use the hook correctly and carefully to avoid any accidental injury.
- Do not expose a battery pack or appliance to fire or excessive temperature. Exposure to fire or temperature above 130°C may cause explosion. The temperature of 130°C can be replaced by the temperature of 265°F.
- Under normal use of condition, this equipment should be kept a separation distance of at least 20 cm (7.87 inches) between the antenna and the body of the user.
- The robot is equipped with a range of cutting-edge sensors that play a crucial role in its functionality and performance. To ensure the robot's performance and lifespan, please do not place the robot under extreme environmental conditions for a long time, such as high temperature, strong light, or low temperature. It is recommended to use and store the robot within the requirements of this manual.
- Exceeding an altitude of 2100 m (6889.77ft) will cause the robotic pool cleaner to be unable to function properly. Therefore, please ensure that the robot is used in areas that comply with this altitude restriction to avoid any issues arising from operating the robot at high altitudes.
- SAVE THESE INSTRUCTIONS.

## **FCC/IC Statement**

Any changes or modifications not expressly approved by the part responsible for compliance could void the user's authority to operate the equipment. This equipment has been tested and found to comply with the limits for a Class B digital device, under part 15 of the FCC Rules. These limits are designed to provide reasonable protection against harmful interference in a residential installation. This equipment generates uses and can radiate radio frequency energy and, if not installed and used by the instructions, it may cause harmful interference to radio communications. However, there is no

guarantee that interference will not occur in a particular installation. If this equipment does cause harmful interference to radio or television reception, which can be determined by turning the equipment off and on, the user is encouraged to try to correct the interference by one or more of the following measures:

- Reorient or relocate the receiving antenna.
- Increase the separation between the equipment and receiver.
- Connect the equipment to an outlet on a circuit different from that to which the receiver is connected.
- Consult the dealer or an experienced radio/TV technician for help.

### **MPE Requirements**

To satisfy FCC / IC RF exposure requirements, a separation distance of 20 cm or more should be maintained between the antenna of this device and persons during device operation. To ensure compliance, operation closer than this distance is not recommended.

Under normal use conditions, this equipment should be kept a separation distance of at least 20cm between the antenna and the body of the user.

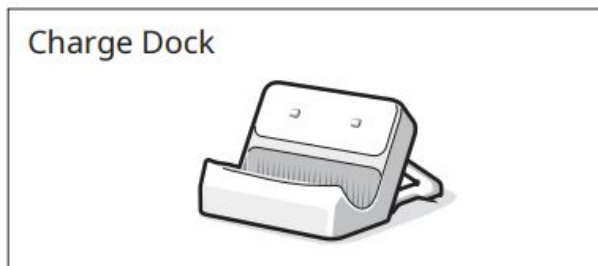
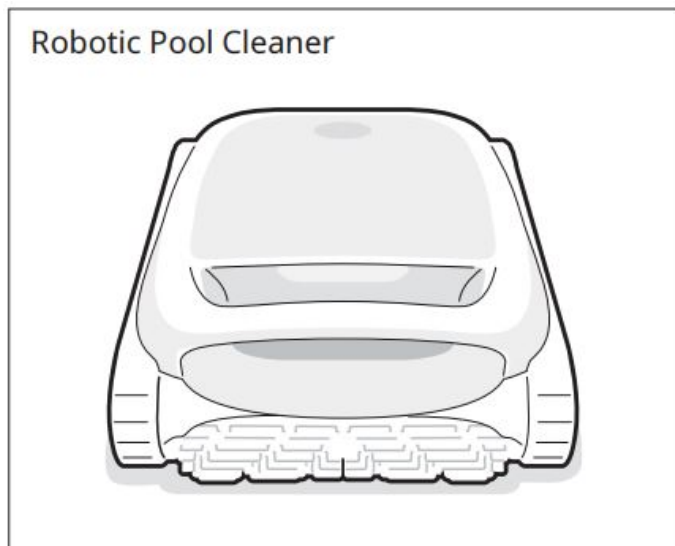
### **CEC**

Press and hold the “ECO Mode” button for about 20s to enable CEC Mode. And press any button to disable it.

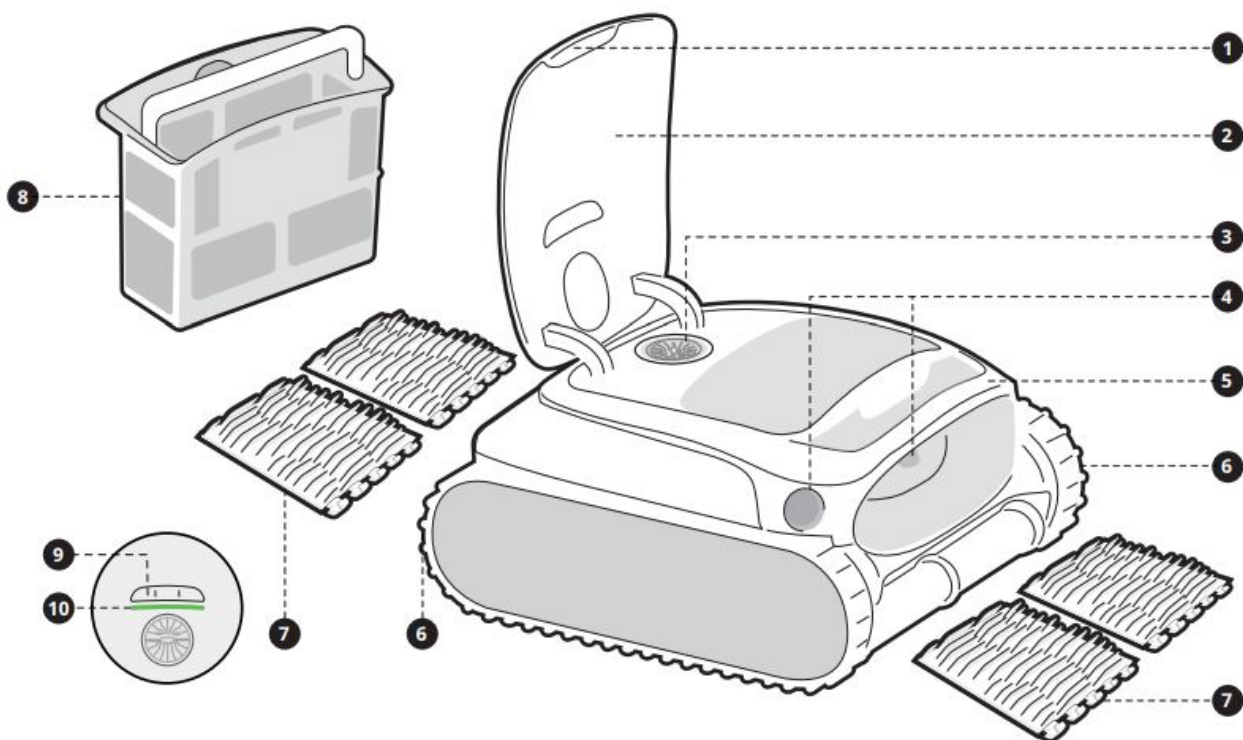
### **Water Conditions for Robot Use**

<b>Chlorine</b>	Max 4 PPM
<b>PH</b>	7.0-7.8
<b>Temperature</b>	6-35°C (42.8-95 °F)
<b>Salt</b>	Maximum = 5000 PPM
<b>Water Depth</b>	0.5-3.0 m (1.64-9.84 ft)
<b>Ingress Protection</b>	IP68 for robotic pool cleaner, IPX4 for charge dock

## Packaging accessories



## Product Structure Diagram



1. Push-to-open Switch
2. Filter Basket Cover
3. Water Outlet
4. Ultrasonic Smart Sensor\*2
5. Handle
6. Track Wheel\*2
7. Dual Roller Brush\*2
8. Filter Basket

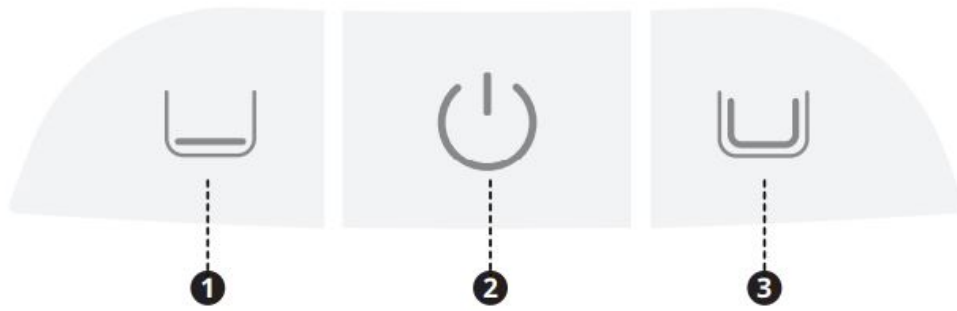
- 9. Mode Button
- 10. Panel Indicator

Product Specifications

Model	AquaSense
Working Voltage	Robotic pool cleaner: 21.6 V Charge dock: 100-240 V, 50/60 Hz
Run Time	2.5~3.5 h
Charge Input	Charge dock: 100-240 V, 50/60 Hz
Charge Output	Charge dock: 28 V 3 A
Nominal Capacity	6700 mAh
Charging Time	2.5~3 h 25 °C/77 °F)
Operation Frequency	2400-2483.5 MHz
Maximum Output Power	20 dBm
Filter Basket Capacity	2 L
Running Speed	0.18 m/s (0.59 ft/s)
Charging Environment Temperature	0 °C~40 °C (32 °F~104 °F)
Working Water Depth	0.5 m-3 m (1.64 ft-9.84 ft)
Product Storage Temperature	-20 °C~45 °C -4 °F~113 °F RH<=75%

Robot buttons





- **Power Button (2)**

Short press to turn the robot on, and press and hold for about 3s to turn it off.

- **Mode Button**

Press the corresponding mode button to switch.

- **Quick mode (1):** Clean the floor once.
- **Standard 3d mode (3):** Clean once in the order of floor, wall, and waterline.

- **Hotspot Configuration**

Press and hold both the “Quick Mode” (1) and “Power” (2) buttons simultaneously for about 3s to trigger the hotspot configuration.

- **Factory Reset**

Press and hold the “Quick mode” (1), “Power” (2) and “Standard Mode” (3) buttons simultaneously for about 10s to restore the factory settings.

## APP

### Instructions for Using the APP

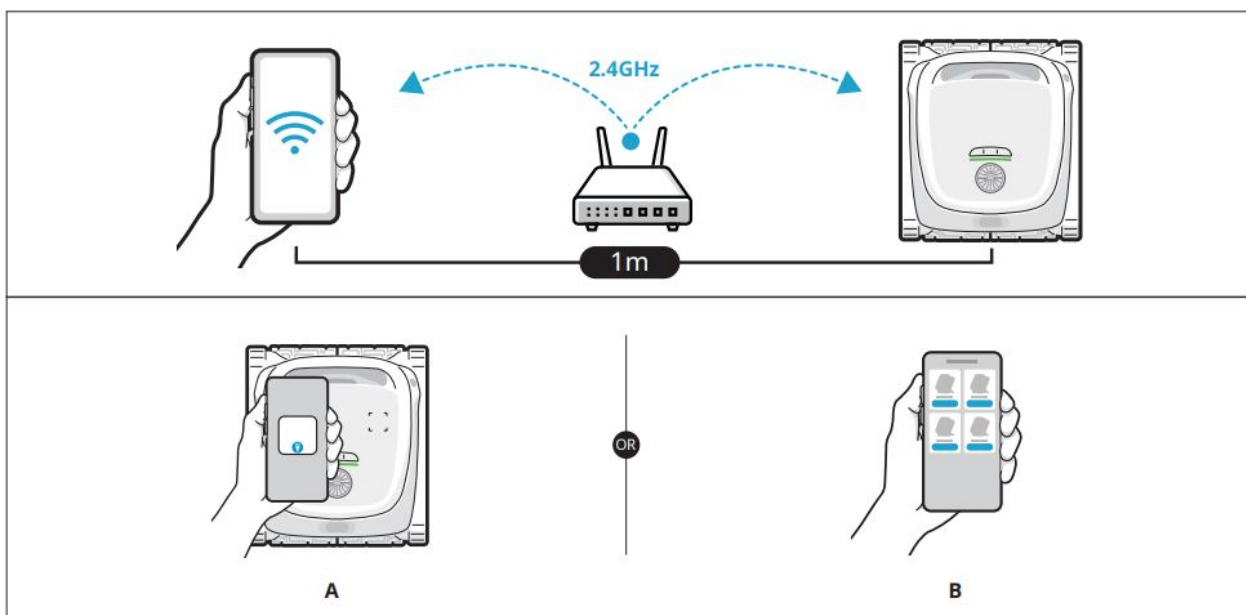
#### APP Download

You can either scan the QR code below or search for “Beatbot” in the App Store or Google Play to download the APP.



### Robot Connection

- Please check the following items before connecting:
  - Make sure the robot is turned on.
  - Confirm that both your mobile phone and the robot are within the same Wi-Fi coverage range with a strong signal.
  - Ensure your phone is connected to Wi-Fi, supporting only the 2.4GHz network.
  - Bring the phone close to the robot (the distance between your phone and the robot should be within 1m).
- Press the “Power” and “Quick Mode” buttons simultaneously for about 3s, and when you see the indicator flashing blue, the robot is ready for network setup.? Then, you can choose either of the following methods to complete the connection:
  - **Scan to add (recommended):** Tap the “Scan to Add” on the home page of the APP, aim the camera at the QR code on the robot, and follow the APP instructions to complete the connection.
  - **Add manually:** Tap the “Add Device” on the home page of the APP, choose your robot model, and follow the APP instructions to complete the connection.



## Product Operation

### Charging

- **Install the charge dock**

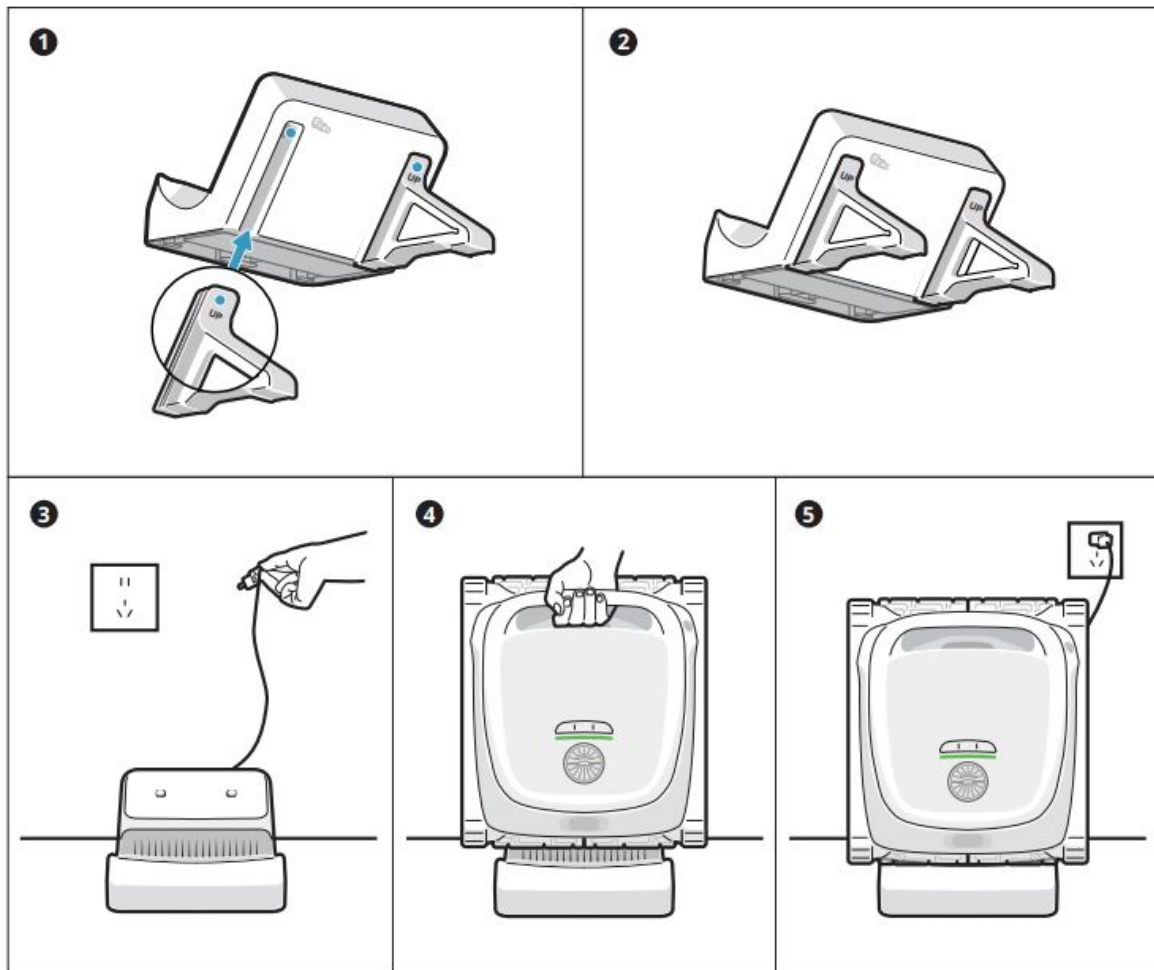
Push the bracket from the bottom up into the groove on the back of the charge dock (1). It is properly installed when you hear a “click” (2).

- **Connect the power supply.**

Plug into the power source (3).

- **Charge the robot**

Place the robot on the charge dock (4). When the panel indicator on the robot shows a breathing light (5), it means the robot is charging.



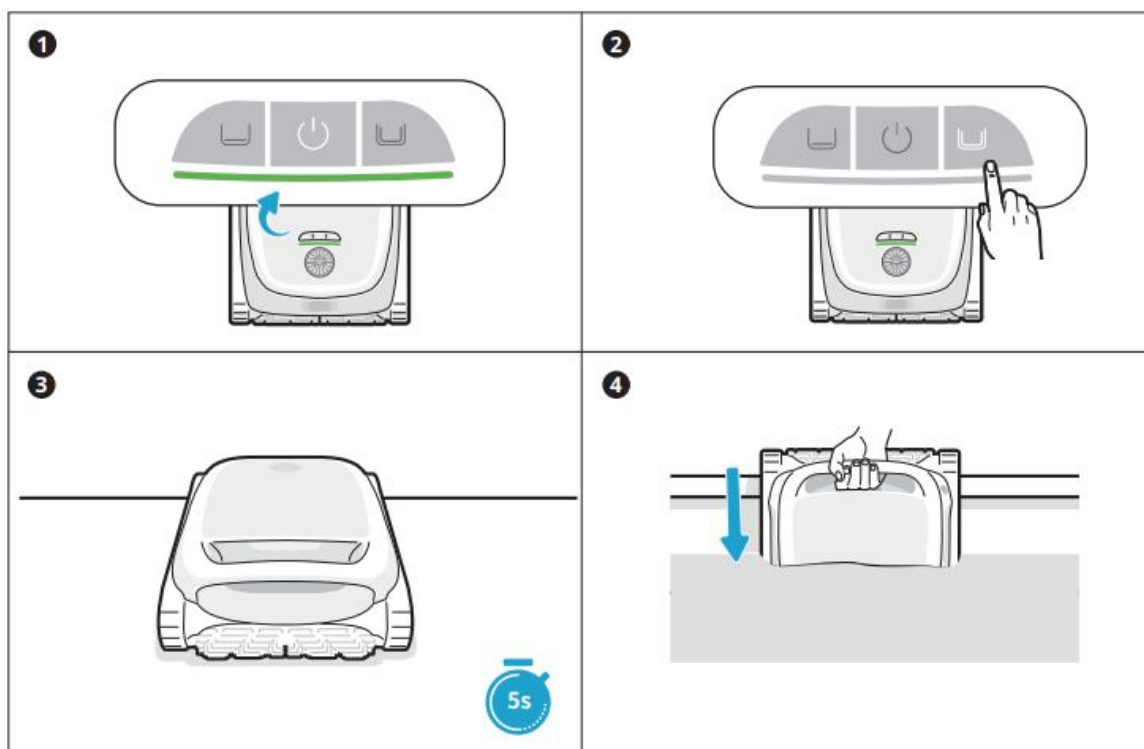
### Tips

- Before using the robot, please make sure it is sufficiently powered.
- The charging temperature is 0°C ~ 40°C /32~104°F. While charging, it is recommended to keep the robot within the Wi-Fi coverage area and away from moisture and direct sunlight.

### Before Cleaning

- Before cleaning, make sure the robot is turned on and has enough power. The panel indicator on the robot should be solid green when the robot is fully charged (1). (If you have connected the robot to the APP, you can also check the power level within the APP.)

- Set the cleaning mode, and the selected mode button will show solid white (2).
- Before entering the water, place the robot on a level surface and wait for about 5s for it to calibrate (3).
- After placing the robot in the water, it will start cleaning automatically (4).



Before entering the water, it is crucial to place the robot on a level ground and to wait for about 5s for it to calibrate. By following these steps, you ensure maximize the effectiveness of the robot's cleaning path.

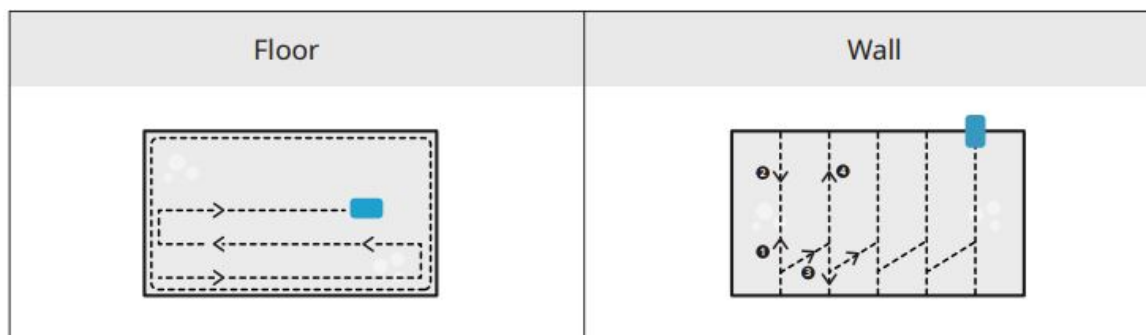
### Tips

- Before cleaning, please make sure there are no foreign objects, such as towels or toys, in the pool.
- Avoid animals and people from entering the pool during cleaning.
- Please turn off the pool circulation or heating system before cleaning.

### During Cleaning

The robotic pool cleaner will automatically disconnect from the phone after entering the water.

### Cleaning Path:



## Tips

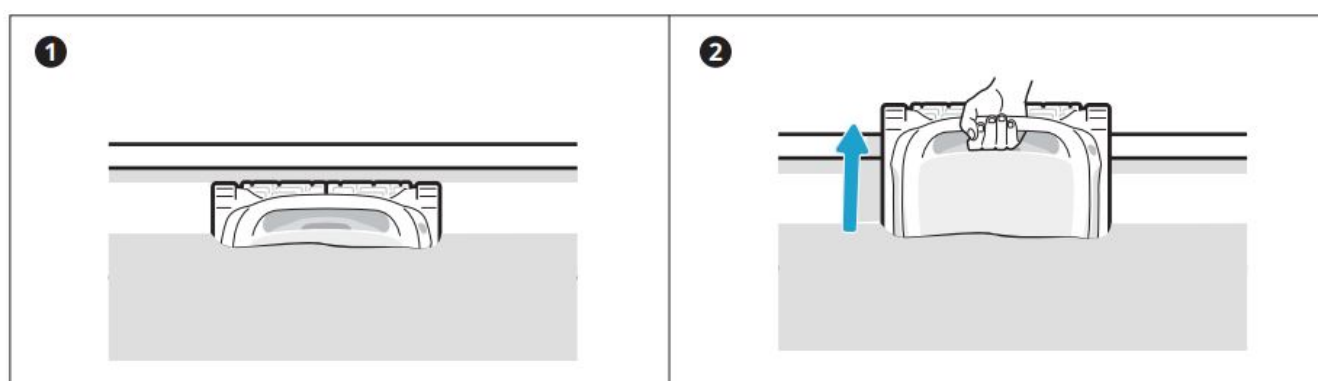
- After the cleaning cycle is completed, pull out the robot gently. Then, the relevant cleaning data will be synchronized once the APP automatically connects (the robot must be within the Wi-Fi coverage area).
- When the robotic pool cleaner does not have enough power to complete this cleaning task, it will automatically climb the wall and stop on the surface next to the wall, and the panel indicator on the robot will show solid orange.
- To ensure the robot's cleaning performance and lifespan, do not take out the filter basket during cleaning.

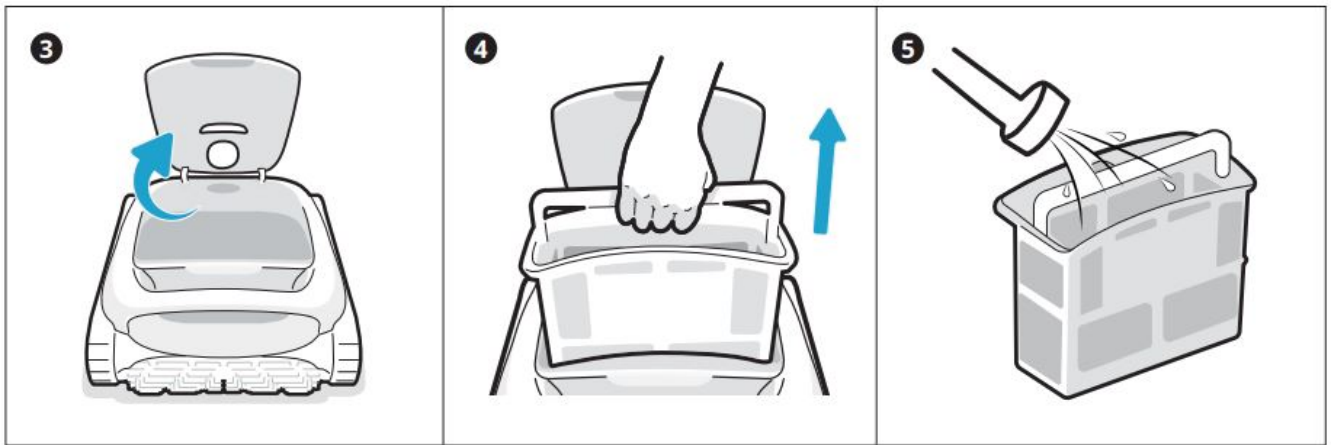
## After Cleaning

- After completion of the cleaning task, the robot will attach itself to the waterline next to the wall (1).

If left idle for an extended period, the robot will descend to the pool floor to conserve power. To retrieve it, the supplied hook can be utilized.

- Pull the robot out of the swimming pool gently (2).
- Clean the filter basket.
- Open the top cover of the robot (3), take out the filter basket (4), rinse the filter clean and put it back into the robot (5).

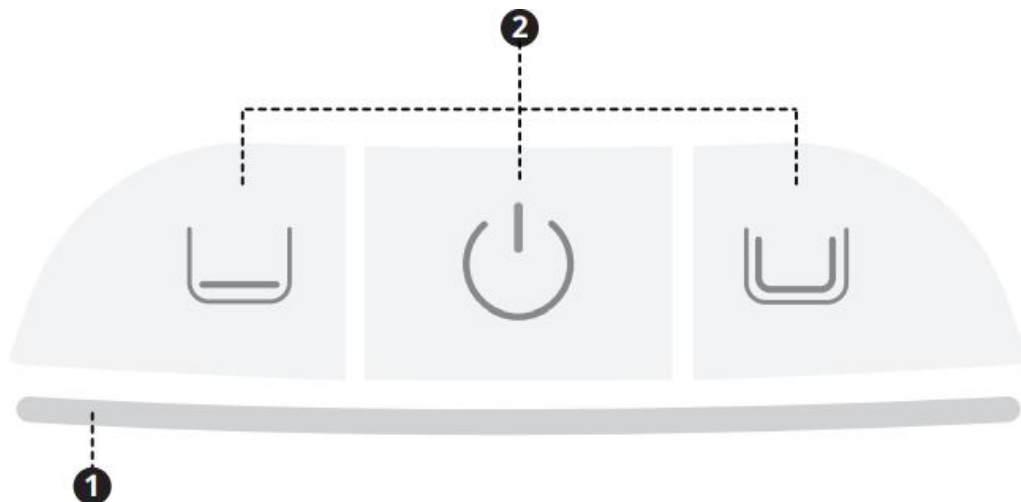




## Tips

- After the robot stops dripping water, put it back on the charge dock for the next use.
- If the robot fails to return to the shore automatically, please use the supplied hook to pull it to the surface and then lift it out.

## Lighting Effects



## Panel Indicator

- |  |  |                                   |  |                       |                                      |          |
|--|--|-----------------------------------|--|-----------------------|--------------------------------------|----------|
|  | Solid green light  | Sufficient battery power          |  | Solid yellow light    | $15\% \leq \text{Battery} \leq 30\%$ |          |
|  | Solid orange light   | Battery $\leq 15\%$               |  | Flashing orange light | Robot malfunction                    |          |
|  | Flashing blue light  | Network configuring/OTA upgrading |  |                       |                                      |          |
|  | Breathing light (The displayed light color corresponds to the current battery level) |                                   |  |                       |                                      | Charging |

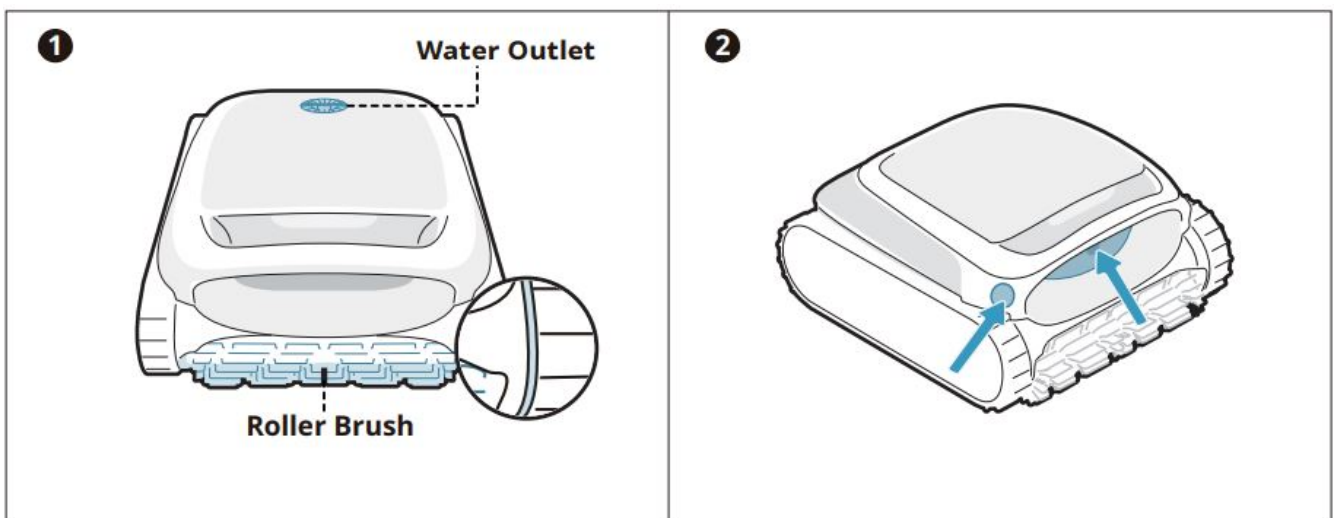
## Power Button+Mode button

○ Solid white light      Robot is powered on; This cleaning mode is selected      ○○ Flashing white light      Returning

## Maintenance and Replacement

### Maintenance

- After each use, check and clean any foreign objects, such as tangled hair and trapped sand, from the water outlet, track wheels, and roller brushes.
- Clean the ultrasonic smart sensors. Ensure no obstacles are on the sensors before cleaning.



### Replaceable Accessories

- **Filter Basket**

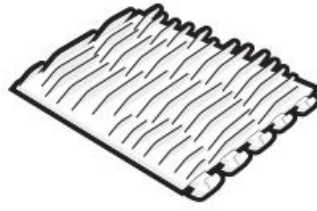
It is recommended to regularly check the condition of the filter basket and replace it as needed to ensure the system is functioning at its best.



- **Roller Brush**

It is recommended to regularly inspect the condition of the roller brush and replace it

as necessary to keep the robot running smoothly and effectively.



## Storage

- Find an appropriate indoor storage space that is cool, dry, and shielded from direct sunlight, rain, and frost.
- Keep the robotic pool cleaner away from extreme temperatures, open flames, and places accessible to children.
- Properly protect it from dust when stored for a long period.
- Power off and disconnect it from the power source when storing. Please check the battery level at least every 6 months and charge the battery to around 50%.

## FAQ

What type swimming pool is suitable?

Available for all shapes of pools, and pools of vinyl, fiberglass, ceramic and other materials.

Why does the robot not move or move slowly at the pool floor?

Please turn off the pool circulation or heating system before cleaning. The robot may be stuck by the drain or other obstacles on the pool floor. If it does not get out of the trap successfully after a few minutes, please help it manually by using the hook. And the robot will resume cleaning after getting out of the trap. If the pool is too dirty, the robot will quickly suction up debris and sludge. Please check the filter basket promptly to see if it needs cleaning.

Why is there water in the new machine?



As each machine needs to undergo strict testing before leaving the factory, including underwater testing, etc., there will be a small amount of residual water stains, which is normal, please feel free to use it.

Why doesn't the robot follow the S-shaped path during pool floor cleaning?

In cases where the connection between the pool floor and walls is curved or the pool shape is too complex, the robot will switch to DeepSense Mode for a better cleaning. The robot is in MultiZone Mode cleaning.

Why can't the robot be charged?

Please check if the robot is properly plugged in. Ensure that the robot is correctly positioned on the charge dock. Examine whether the charging pins of the dock and the robot are rusted or soiled. If so, please clean them before attempting to charge again.

Why is the robot offline?

Weak Wi-Fi signal: the robot is far away from the area of Wi-Fi signal or it enters the water, causing the network to disconnect. The robot will connect automatically when the signal is restored. Device shutdown: The robot automatically shuts down when it runs out of power. After charging and powering on, the robot will connect automatically. The device is connected to another account: the robot has been connected to another user. You can reset its Wi-Fi and connect again. Router related: If the router is rebooting, if there are changes to the router's Wi-Fi name or password, or if the router has blacklisted the device, please address these issues first to determine if the device comes back online. If the issue persists, reset the Wi-Fi and reconnect.

Why does the robot go offline after entering the water?

Wi-Fi signals operate using 2.4GHz electromagnetic waves to transmit data. Water, being a medium with a high dielectric constant, can absorb and scatter these electromagnetic waves significantly. When the robot is submerged in water, the water acts as a barrier that severely attenuates the Wi-Fi signal, making it difficult for the robot to maintain a stable connection to the network. The loss or weakening of the Wi-Fi signal in water can cause the robot to lose its connection to the network and go offline.

What should I do if the filter basket is clogged?

When you receive the notification for a clogged filter basket, please clean the filter basket promptly. It's important to note that when you use the pool for the first time in this season or after a long period of inactivity, there may be a significant buildup of sediment or dead algae at the pool floor, leading to a blockage in the filter basket. In such cases, it is recommended to turn on the circulation system to help the pool clear up more quickly. Regular maintenance and cleaning of the filter basket will help prevent future blockages and ensure optimal pool performance.

Why does the robot automatically return when the battery is not used up?

The robot returns automatically before the battery is depleted to prevent the following situations: In case the battery runs out and the robot shuts down, it may not be able to report its status promptly. To prevent deep discharging of the battery, which can help prolong the battery's lifespan. Before each use, please ensure that the robot has sufficient battery power for optimal performance.

## After-sales Service

Warranty Policy	2-year warranty
After-sales Email	<a href="mailto:service@beatbot.com">service@beatbot.com</a>

<b>Official Website</b>	<a href="http://www.beatbot.com">www.beatbot.com</a>
<b>North America Toll Free</b>	<a href="tel:833-702-4399">833-702-4399</a> Mon-Sun 9:00 am-6:00 pm (CST)


Please refer to the Beatbot official website for the latest after-sales policy.

The lithium-ion pack contains substances that are hazardous to the environment. Before disposing of the robot, please remove the battery pack, then discard or recycle it. It is used according to the local laws and regulations of the country or region.

## WEEE Information

All products bearing this symbol are waste electrical and electronic equipment (WEEE as in directive 2012/19/EU), which should not be mixed with unsorted household waste. Instead, you should protect human health and the environment by handing over your waste equipment to a designated collection point appointed by the government or local authorities for recycling waste electrical and electronic equipment. Correct disposal and recycling will help prevent potential negative consequences to the environment and human health. Please contact the installer or local authorities for more information about the location, as well as the terms and conditions of such collection points.

## Documents / Resources

	<a href="#">Beatbot RCDS01-RCDS02 Robotic Pool Cleaner [pdf]</a> User Manual RCDS01, RCDS02, RCDS01-RCDS02 Robotic Pool Cleaner, RCDS01-R CDS02, Robotic Pool Cleaner, Pool Cleaner, Cleaner
---	--

## References

- [User Manual](#)

---

## Leave a comment

Your email address will not be published. Required fields are marked \*

Comment \*

Name

Email

Website

☐ Save my name, email, and website in this browser for the next time I comment.

**Post Comment**

**Search:**

e.g. whirlpool wrf535swhz

**Search**

[Manuals+](#) | [Upload](#) | [Deep Search](#) | [Privacy Policy](#) | [@manuals.plus](#) | [YouTube](#)

This website is an independent publication and is neither affiliated with nor endorsed by any of the trademark owners. The "Bluetooth®" word mark and logos are registered trademarks owned by Bluetooth SIG, Inc. The "Wi-Fi®" word mark and logos are registered trademarks owned by the Wi-Fi Alliance. Any use of these marks on this website does not imply any affiliation with or endorsement.