

# Beads

## Beads LS-S200 Smart Ambient Light String User Manual

[Home](#) » [BEADS](#) » Beads LS-S200 Smart Ambient Light String User Manual 

Beads LS-S200 Smart Ambient Light String User Manual

# Beads

### Contents

- [1 Specifications](#)
- [2 Remote](#)
- [3 App Download](#)
- [4 Grouping](#)
- [5 Color Selection](#)
- [6 Documents / Resources](#)
  - [6.1 References](#)
- [7 Related Posts](#)

## Specifications

**Color:** RCB 16 million colors

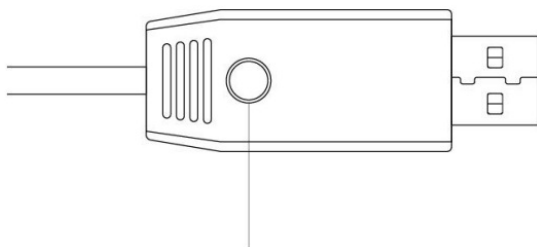
**Connectivity:** BT

**Working Voltage:** 5V/2A

**Operating Temperature:** -5-45°C

**Life Span:** About 20,000 hours

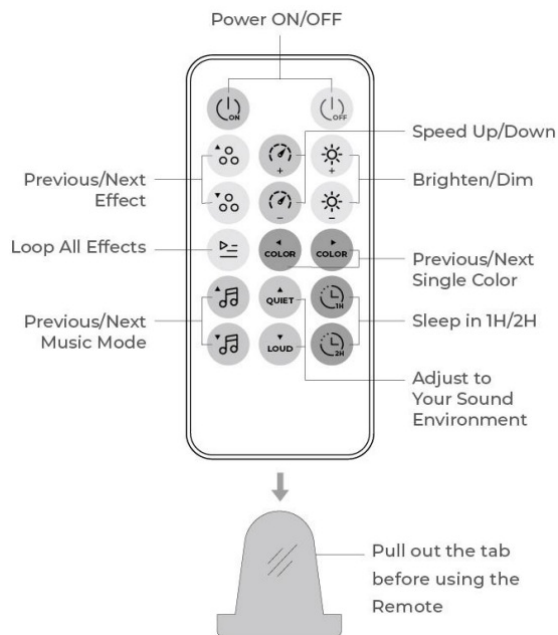
### Controller




- Press-On/Switch Effects (8 regular effects + 2 music modes)

- Press and hold for 2 seconds-Loop all 25 effects
- Press and hold for 5 seconds-Off
- Press twice and hold for 10 seconds Restore factory settings

## Remote



## WARNING

-  **INGESTION HAZARD:** This product contains a button dollar coin battery
- DEATH or injury can result if ingested
- A swallowed button cell or coin battery can cause internal chemical burn within 2 hours
- KEEP new and used batteries OUT OF REACH OF CHILDREN
- Seek immediate medical attention if a battery is suspected to be swallowed or inserted into any part of the body

## App Download



Please scan the QR code to download the 'LED SMART App'.



\*This application requires IOS 10.0 or later/Android 4.4 or later

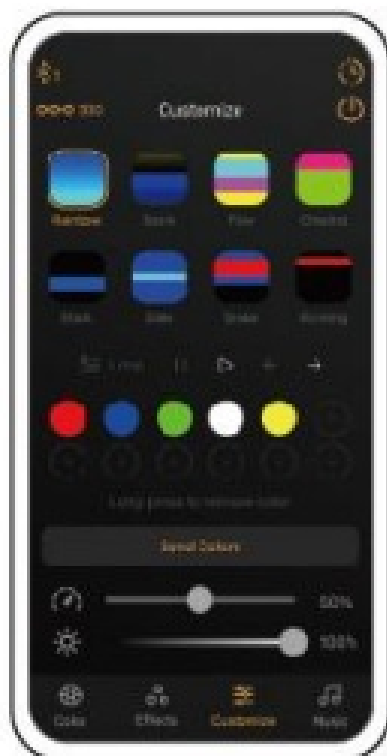
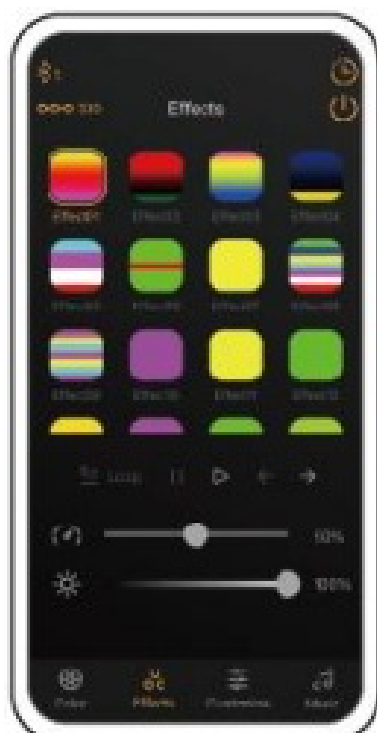
1. Download and install the LED SMART App
  2. Make sure the BT of your mobile device is on
  3. Go to our App directly, and all available devices nearby will be listed. Select the device you wish to connect.
- If you are using an Android mobile device, please make sure you have enabled precise location access and nearby devices permission for our App.

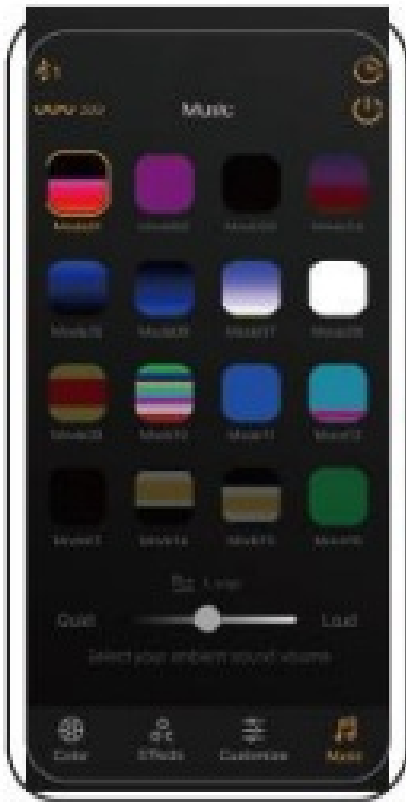




- Generally, 1 mobile device can group up to 5 devices together and control them simultaneously. This may vary from different phones
- The user interfaces provided above are for reference only, and might be different from the latest version of the App







## Grouping

1. Turn on multiple controllers and click the “Group button
2. Select the controllers you wish to add, click Add Device’, and name the group to complete grouping
3. If you need to delete a group, just long press the group to delete it.

Devices Group



Add devices

Selected devices

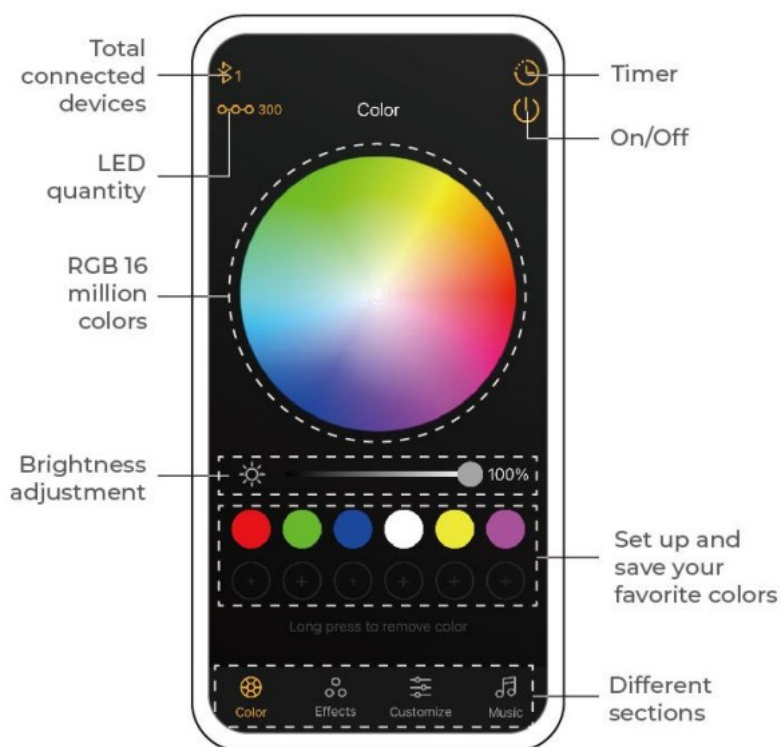


Name the group

Long press to delete group



## Color Selection



## FCC WARNING



This device complies with part 15 of the FCC Rules. Operation is subject to the following two conditions:

1. this device may not cause harmful interference, and
  2. this device must accept any interference received, including interference that may cause undesired operation.
- Any changes or modifications not expressly approved by the party responsible for compliance could void the user's authority to operate the equipment.

**NOTE:** This equipment has been tested and found to comply with the limits for a Class B digital device, pursuant to Part 15 of the FCC Rules. These limits are designed to provide reasonable protection against harmful interference in a residential installation.

This equipment generates, uses, and can radiate radio frequency energy and, if not installed and used in accordance with the instructions, may cause harmful interference to radio communications. However, there is no guarantee that interference will not occur in a particular installation. If this equipment does cause harmful interference to radio or television reception, which can be determined by turning the equipment off and on, the user is encouraged to try to correct the interference by one or more of the following measures:

- Reorient or relocate the receiving antenna.
- Increase the separation between the equipment and receiver.
- Connect the equipment into an outlet on a circuit different from that to which the receiver is connected.
- Consult the dealer or an experienced radio technician for help. To maintain compliance with FCC's RF Exposure guidelines, this equipment should be installed and operated with a minimum distance of 20cm between the radiator and your body: Use only the supplied antenna.



---

## Documents / Resources

	<p><a href="#">Beads LS-S200 Smart Ambient Light String</a> [pdf] User Manual</p> <p>LS-S200 Smart Ambient Light String, LS-S200, Smart Ambient Light String, Ambient Light String, Light String, String</p>
---	--

## References

- [User Manual](#)