



10KEYPADU
Stand Alone
Access Control
Keypads



BEA 10KEYPADU Stand Alone Access Control Keypads Installation Guide

[Home](#) » [BEA](#) » BEA 10KEYPADU Stand Alone Access Control Keypads Installation Guide 

Contents

- [1 BEA 10KEYPADU Stand Alone Access Control Keypads](#)
- [2 DESCRIPTION](#)
- [3 TECHNICAL SPECIFICATIONS](#)
- [4 PRECAUTIONS](#)
- [5 MOUNTING](#)
- [6 WIRING](#)
- [7 PROGRAMMING](#)
- [8 OPTIONAL PROGRAMMING](#)
- [9 CONTACT](#)
- [10 Documents / Resources](#)
 - [10.1 References](#)
- [11 Related Posts](#)



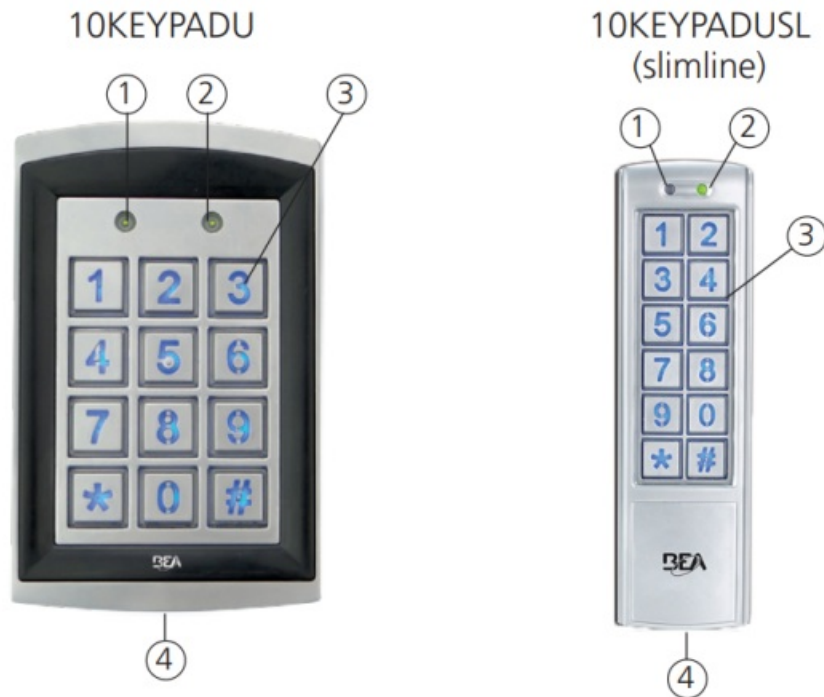
BEA 10KEYPADU Stand Alone Access Control Keypads



Visit [website](#) for available languages of this document.



DESCRIPTION



1. Door LED
2. Mode LED
3. Matrix keypad
4. Case screw

(bottom of case)

TECHNICAL SPECIFICATIONS

Supply voltage: 12 – 24 VAC/VDC

WARNING: Product will be damaged and warranty will be voided if supply voltage exceeds 30VDC or 24VAC. This product shall not be used with a BEA part number 1024VAC transformer or any standard, non-regulated 24VAC transformer as the measured voltage exceeds 24 VAC.

- **Standby current:** ≤ 30 mA
- **Working current:** ≤ 160 mA
- **Max user codes:** 1100 (zone 1: 1000 users, zone 2: 100 users)
- **Relock time:** 0 – 99 seconds
- **Output:** 2 Form-C relays (free of potential change-over contact)
- **Max. contact voltage:** 42 VAC/VDC
- **Max. contact current:** 1 A (resistive)
- **Max. switching power:** 30 W (VDC) / 48 VA (VAC)
- **Cable length:** 3 ft
- **Operating temperature:** -22 – 158 °F
- **Operating humidity:** 0 – 95% (non-condensing)
- **IP rating:** IP66 (waterproof and dustproof)
- **Dimension:** 10KEYPADU: 3.0" (W) x 4.7" (H) x 0.9" (D) – (76 mm x 120 mm x 22 mm)
- **10KEYPADUSL:** 1.7" (W) x 5.9" (H) x 0.95" (D) – (44 mm x 150 mm x 24 mm)
- **Certification:** CE, RoHS

- **Backlight:** Blue keypad illumination

Specifications are subject to change without prior notice. All values measured in specific conditions.

PRECAUTIONS



- Shut off all power going to header before attempting any wiring procedures.
- Maintain a clean and safe environment when working in public areas.
- Always check placement of all wiring before powering up to ensure that moving door parts will not catch any wires and cause damage to equipment.
- Ensure compliance with all applicable safety standards (i.e. ANSI A156.10) upon completion of installation.

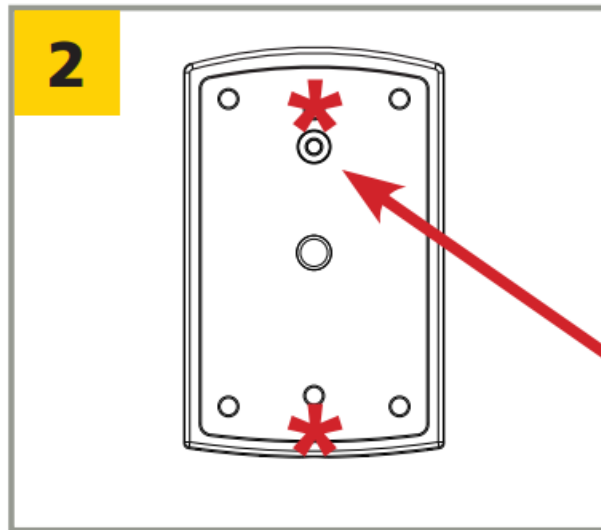
MOUNTING

INSTALLATION TIPS

- Handle the equipment with care.
- Add thread locker to all screws before installing.
- Firmly tighten screws.

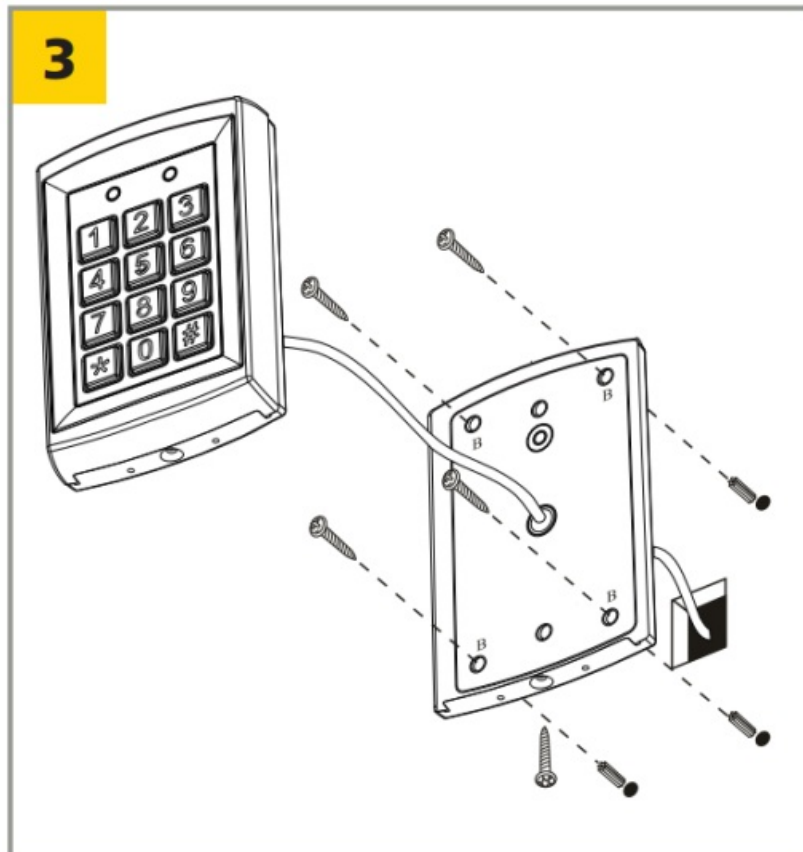


Using the supplied hex key, remove the backcase screw from the keypad bottom.



- Use the drilling template and drill required holes.
- For surface mounting, drill the 4 corner holes in the image.
- For single-gang box mounting, drill the 2 holes marked with an asterisk in the image.

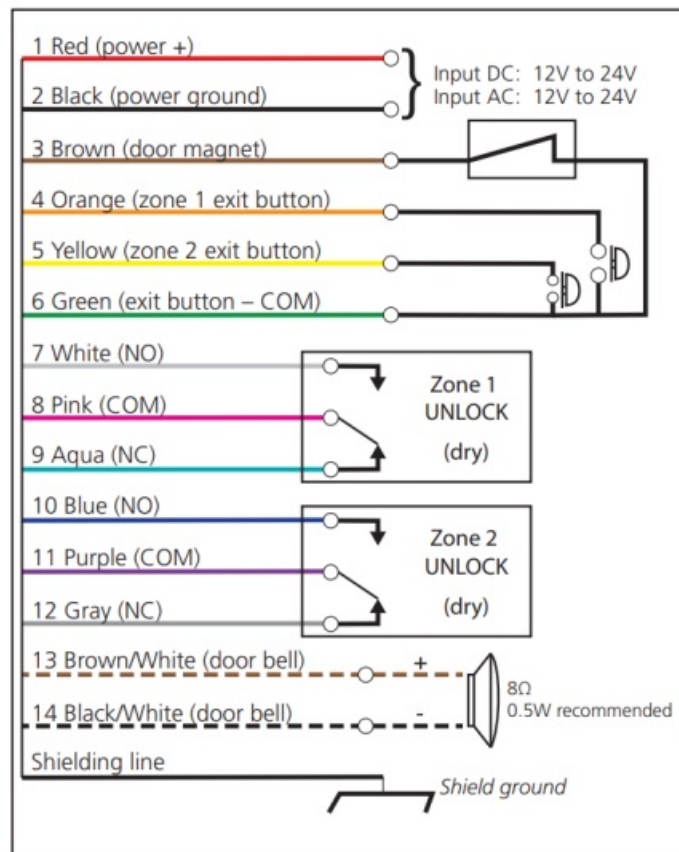
NOTE: Do not damage the tamper sensor.



- Mount backcase on the wall with provided screws. Make sure to pull keypad cable through the center hole.
- Keep keypad horizontal to the floor.

WIRING

Connect the wires based on the wiring diagram below.



When wiring is complete, mount the keypad to the back cover by using the provided screws.

PROGRAMMING

PROGRAMMING TIPS

- If you forget the administration code, turn off the power, press and hold “#” key, and then turn the power back on. A short beep will be heard and the administration code has been restored back to 1234.
- If no buttons are pressed within 30 seconds while in “setup” mode, the device will turn back to normal function automatically. Mode LED turns green.
- If any incorrect key combinations are entered, a continuous beep will be heard.

GETTING STARTED

DOOR MODE

ENTER SETUP MODE

- Enter the default administration code (1234) twice (i.e. 1234 + 1234) to enter “setup” mode.



Mode LED will turn red and a long beep will be heard.

- Press the “#” key to exit “setup” mode. Mode LED will turn green.



ADMIN CODES

CHANGE LENGTH OF ADMIN CODE

Changing the admin code length will delete all existing user codes.

Changing the admin code length will reset the admin code back to a sequential number (similar to that in step 1a), consisting of the correct amount of digits (e.g. if the admin code length is changed to 6 digits, the admin code defaults to "123456"). Enter "setup" mode.

Press the star (*) key and then "9". Mode LED will flash red.



Press "0" and then "4". A short beep will sound. Mode LED will turn red.



Enter the length of the admin code in digits, ranging from "2" to "6" ("2" is the minimum code length, and "6" is the maximum).

- one beep = admin code length successfully changed
- three beeps = admin code length is equal to existing length

Press "#" to exit "Admin code length setup" mode. Mode LED remains red.



Press "#" again to exit "setup" mode. Mode LED turns green.



MODIFY ADMIN CODE

Enter "setup" mode.

Press the star (*) key and then "3". Mode LED will flash red.



Enter a new code, 2 – 6 digits (00 – 999999) twice to set the new admin code.

Note: The number of digits must match the admin code length.

Press "#" to exit "setup" mode. Mode LED turns green.



USER CODES

ADD USER CODE TO ZONE 1

(must be different from admin code)

Enter "setup" mode.

Press the star (*) key and then "9". Mode LED will flash red.



Press "0" and then "2". A short beep will sound. Mode LED will turn red.



Enter a 3-digit number (000 – 999) to set the electronic location for the zone 1 user code. LED remains red, and a

a short beep will sound after entering the 3-digit number. If the location is occupied, the door LED will illuminate red.



Enter the new user code. The user code must be the same length as the admin code. A long beep will sound. User code is successfully added. The new code will replace the existing code stored in the same location. Repeat the previous two steps to add more codes.

Press “#” to exit “Add user code to zone 1” mode. Mode LED remains red.



Press “#” again to exit “setup” mode. Mode LED turns green.

NOTE: When zone 1 output relay is activated, the door indicator LED will turn green.



ADD USER CODE TO ZONE 2

(must be different from admin code and zone 1 user code)

Enter “setup” mode.

Press the star (*) key and then “9”. Mode LED will flash red.



Press “0” and then “3”. A short beep will sound. Mode LED will turn red.



Enter a 2-digit number (00 – 99) to set the electronic location for the zone 2 user code. LED remains red, and a short beep will sound after entering the 2-digit number. If the location is occupied, the door LED will illuminate red.



Enter the new user code. The user code must be the same length as the admin code. A long beep will sound. User code is successfully added. The new code will replace the existing code stored in the same location.

Repeat the previous two steps to add more codes.

Press “#” to exit “Add user code to zone 2” mode. Mode LED remains red.



Press # again to exit “setup” mode. Mode LED turns green.



NOTE: When zone 2 output relay is activated, the door indicator LED will turn red



REMOVE ONE USER CODE

Enter “setup” mode.

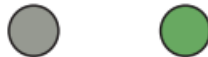
Enter the location of the user code to be deleted (three digits). Mode LED will flash red.



Press the star (*) key twice to delete. Door LED turns green. Mode LED will flash red.



Press “#” twice to end programming. Mode LED turns green.



REMOVE ALL USER CODES

Enter "setup" mode.

Press the star (*) key and then "8". Mode LED will flash red.



Press "8" twice. A long beep will sound. Mode LED will flash red.



Press "#" again to exit "setup" mode. Mode LED turns green.



UNLOCKING TIMES

SET UNLOCKING TIME FOR ZONE 1

Enter "setup" mode.

Press the star (*) key and then "1". Mode LED will flash red.



Enter a 2-digit number (00 – 99) for the "unlock time" value.

- "00" = sets "unlock time" to toggle mode ("00" to both open and close the door)
- "01" to "99" = "unlock time" in seconds
- "01" = default

After entering the "unlock time" number, a long beep will sound and the mode LED turns red.



Press "#" to exit "setup" mode. Mode LED turns green.



SET UNLOCKING TIME FOR ZONE 2

Enter "setup" mode.

Press the star (*) key and then "5". Mode LED will flash red.



Enter a 2-digit number (00 – 99) for the "unlock time" value.

- "00" = sets "unlock time" to toggle mode ("00" to both open and close the door)
- "01" to "99" = "unlock time" in seconds
- "01" = default

After entering the "unlock time" number, a long beep will sound and the mode LED turns red.



Press "#" to exit "setup" mode. Mode LED turns green.



BUZZER

TURN ON BUZZER

Enter "setup" mode.

Press the star (*) key and then "2". Mode LED will flash red.



Press "0" and then "3". Mode LED will turn red.



Press "#" again to exit "setup" mode. Mode LED turns green.



TURN OFF BUZZER

Enter "setup" mode.

Press the star (*) key and then "2". Mode LED will flash red.



Press "0" and then "4". Mode LED will turn red.



Press "#" again to exit "setup" mode. Mode LED turns green.



NOTE: Buzzer will still sound (for 1 second) after a valid access code is entered.

BACKLIGHT

FACTORY DEFAULT = ON

TURN ON BACKLIGHT

Enter "setup" mode.

Press the star (*) key and then "2". Mode LED will flash red.



Press the star (*) key and then "2". Mode LED will turn red.



Press "#" again to exit "setup" mode. Mode LED turns green.



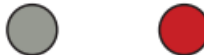
TURN OFF BACKLIGHT (10KEYPADSU only)

Enter "setup" mode.

Press the star (*) key and then "2". Mode LED will flash red.



Press the star (*) key and then "1". Mode LED will turn red.



Press "#" again to exit "setup" mode. Mode LED turns green.



NOTE: Backlight will illuminate after any button is pressed, and will turn off after 45 seconds of no activity.

DOOR BELL

PROGRAM A DOORBELL

Connect an external speaker (8Ω, 0.5w) to the brown/white and black/white wires of this device. Press the star (*) key and the external speaker rings as a door bell.

OPTIONAL PROGRAMMING

TAMPER ALARM

This feature allows a built-in buzzer to activate if the keypad is removed from the wall. The alarm will stop automatically in 60 seconds or if the admin code is entered before the 60-second timeout.

FACTORY DEFAULT: OFF

TURN ON TAMPER ALARM

To turn on the tamper alarm feature, enter "setup" mode.
Press the star (*) key and then "6". Mode LED will flash red.



Press "0" and then "2". A long beep will sound. Mode LED will turn red.



Press "#" again to exit "setup" mode. Mode LED turns green.



TURN OFF TAMPER ALARM

To turn off the tamper alarm, enter "setup" mode.
Press the star (*) key and then "6". Mode LED will flash red.



Press "0" and then "1". A long beep will sound. Mode LED will turn red.



Press "#" again to exit "setup" mode. Mode LED turns green.



FACTORY RESTORE

RESTORE TO FACTORY DEFAULTS

(clears all user codes, resets admin code length and admin code)

Enter "setup" mode.
Press the star (*) key and then "8". Mode LED will flash red.



Press "9" twice. A long beep will sound. Mode LED will flash red.



Press "#" twice to exit "setup" mode. Mode LED turns green.



USER OPERATION

Simply enter the user code provided to you.
If 3 invalid consecutive keyboard input entries occur, the keypad will be disabled for 60 seconds

BEA, INC. INSTALLATION/SERVICE COMPLIANCE EXPECTATIONS

BEA Inc., the sensor manufacturer, cannot be held responsible for incorrect installations or incorrect adjustments of the sensor/device; therefore, BEA Inc. does not guarantee any use of the sensor/device outside its intended purpose.

BEA Inc. strongly recommends that installation and service technicians be AAADM-certified for pedestrian doors, IDA-certified for doors/gates, and factory-trained for the type of door/gate system.

Installers and service personnel are responsible for executing a risk assessment following each installation/service performed, ensuring that the sensor/device system performance is compliant with local, national, and international regulations, codes, and standards.

Once installation or service work is complete, a safety inspection of the system shall be performed and documented per the manufacturer's recommendations or industry guidelines. Examples of compliance may apply to ANSI 156.10, ANSI 156.19, ANSI/DASMA 102, ANSI/DASMA 107, UL294, UL325, and International Building Code.

CONTACT

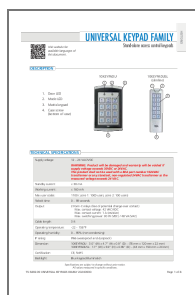
Tech Support: 1-[800-407-4545](tel:800-407-4545)

Customer Service: 1-[800-523-2462](tel:800-523-2462)

General Tech Questions: techservices-us@BEAsensors.com | www.BEAsensors.com

BEA | Original Instructions | PLEASE KEEP FOR FURTHER USE – DESIGNED FOR COLOR PRINTING

Documents / Resources



[BEA 10KEYPADU Stand Alone Access Control Keypads](#) [pdf] Installation Guide
10KEYPADU, 10KEYPADUSL, 10KEYPADU Stand Alone Access Control Keypads, 10KEYPAD U, Stand Alone Access Control Keypads, Alone Access Control Keypads, Access Control Keypads, Control Keypads, Keypads

References

- [User Manual](#)

[Manuals+](#), [Privacy Policy](#)

This website is an independent publication and is neither affiliated with nor endorsed by any of the trademark owners. The "Bluetooth®" word mark and logos are registered trademarks owned by Bluetooth SIG, Inc. The "Wi-Fi®" word mark and logos are registered trademarks owned by the Wi-Fi Alliance. Any use of these marks on this website does not imply any affiliation with or endorsement.