

[Skip to content](#)

**Manuals+**

User Manuals Simplified.

## be quiet! Silent Loop 2 CPU Cooler Instruction Manual



[Home](#) » [be quiet!](#) » be quiet! Silent Loop 2 CPU Cooler Instruction Manual

# be quiet!

Instruction Manual

CPU Cooler



Silent Loop 2  
360mm/280mm  
240mm/120mm

Contents [hide](#)

[1 Silent Loop 2 CPU Cooler](#)

[2 Warranty:](#)

[3 SCOPE OF DELIVERY](#)

[4 AMD: AM4](#)

[5 Intel LGA 1700 / 1200 / 1150 / 1151 / 1155](#)

[6 RECOMMENDED INSTALLATION](#)

[7 ILLUMINATION](#)

[8 REFILLING THE SYSTEM](#)

[9 TROUBLESHOOTING](#)

[10 LIMITED WARRANTY](#)

[11 Documents / Resources](#)

[11.1 References](#)

[12 Related Posts](#)

Silent Loop 2 CPU Cooler

120mm



[www.bequiet.com/bw009](http://www.bequiet.com/bw009)

240mm



[www.bequiet.com/bw010](http://www.bequiet.com/bw010)

280mm



[www.bequiet.com/bw011](http://www.bequiet.com/bw011)

360mm



[www.bequiet.com/bw012](http://www.bequiet.com/bw012)

» Product information for this CPU cooler

**Introduction:** Thank you for deciding to purchase a be quiet!

product. The following instructions will guide you through the installation process. If you do encounter installation problems, please don't hesitate to contact our customer services by mailing [service@bequiet.com](mailto:service@bequiet.com). Please note that be quiet! cannot accept liability for damage caused by compatibility problems.

**Warranty:**

- 3-year manufacturer guarantee for consumers (original purchase from authorized be quiet! dealers only)
- Guarantee work can only be processed with a copy included of the purchase receipt from an authorized be quiet! dealer
- Manipulation and structural changes of any kind, including any damage caused by external mechanical force, will lead to a complete voiding of the guarantee
- Our General Warranty Conditions apply, which can be viewed on [bequiet.com](https://bequiet.com)

Listan GmbH . Wilhelm-Bergner-Straße 11c .21509 Glinde Germany

For further information contact us via e-mail: [service@bequiet.com](mailto:service@bequiet.com)

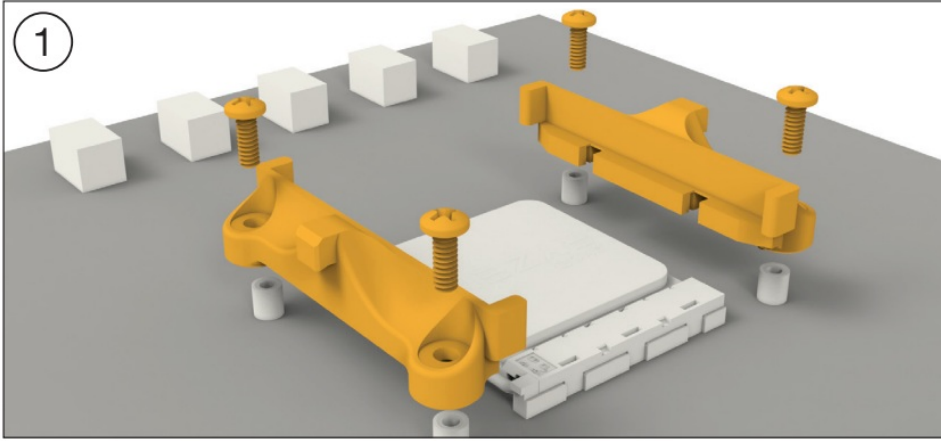
**SCOPE OF DELIVERY**

	Name	Quantity
①	be quiet! Silent Loop 2 CPU cooler	1
②	Fans	120: 2 240 / 280: 2 360: 3
③	Intel backplate	1
④	Intel mounting brackets	2
⑤	Intel mounting brackets LGA 1700	2
⑥	Short AMD mounting brackets	2
⑦	Intel spacer nut A	4
⑧	Intel spacer nut B	4
⑨	AMD Spacer nuts	4
⑩	Mounting bracket fastening screws	4
⑪	Intel backplate screws	4
⑫	AMD backplate screws	4
⑬	Radiator mounting screws	120: 8 240 / 280: 8 360: 12
⑭	Fan mounting screws	120: 8 240 / 280: 8 360: 12
⑮	O-Rings	4
⑯	Thermal paste	1
⑰	Bottle of coolant	1
⑱	SATA cable for ARGB controller	1
⑲	Y-cable	1
⑳	ARGB controller	1
㉑	ON/OFF Tool	1

#### AMD: AM4

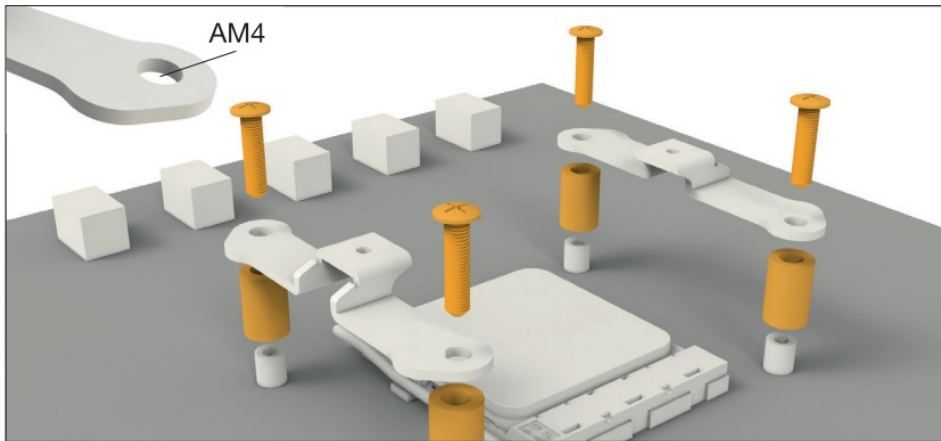
##### The following parts are needed for this:

Silent Loop 2 CPU cooler (1), fans (2), short AMD mounting brackets (6), AMD spacer nuts (9), AMD backplate screws (12), radiator mounting screws (13), fan mounting screws (14), thermal paste (16), Y-cable (19)

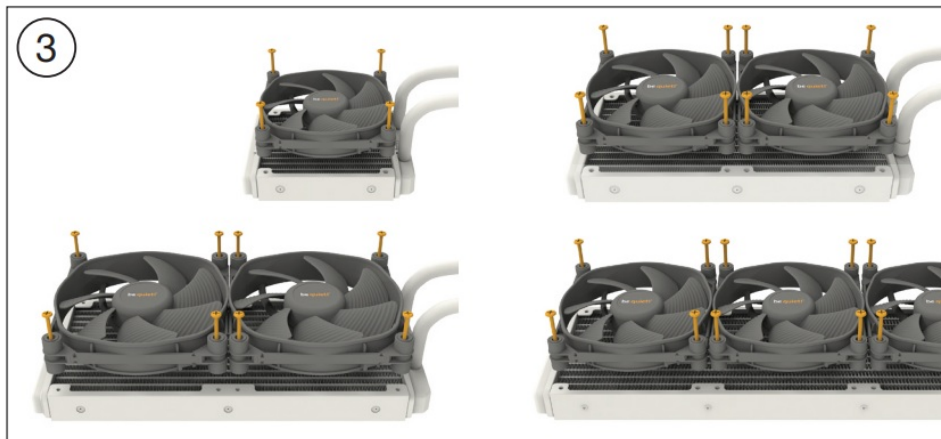


### Assembly of the cooler mounting frame

Prior to mounting the cooler, please detach both plastic holders of the AMD retention module. The factory-mounted backplate on the rear side of the motherboard is required for further installation of the cooler.

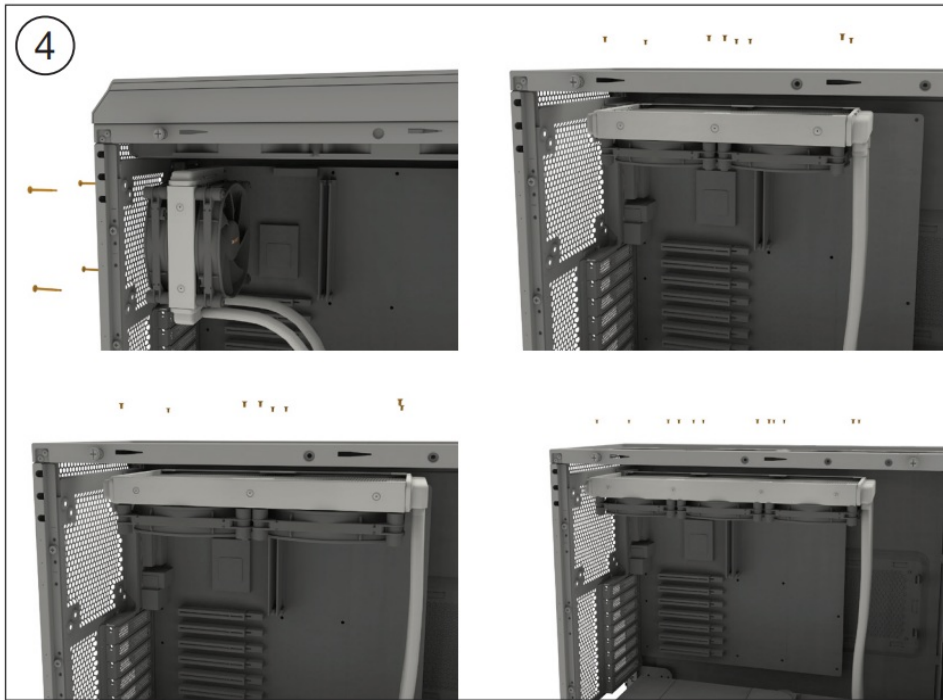


Place the four AMD spacer nuts (9) over the bolt threads of the backplate on the front side and fix both the AMD mounting brackets (6) using the AMD backplate screws (12).



### Mounting the fans on the radiator

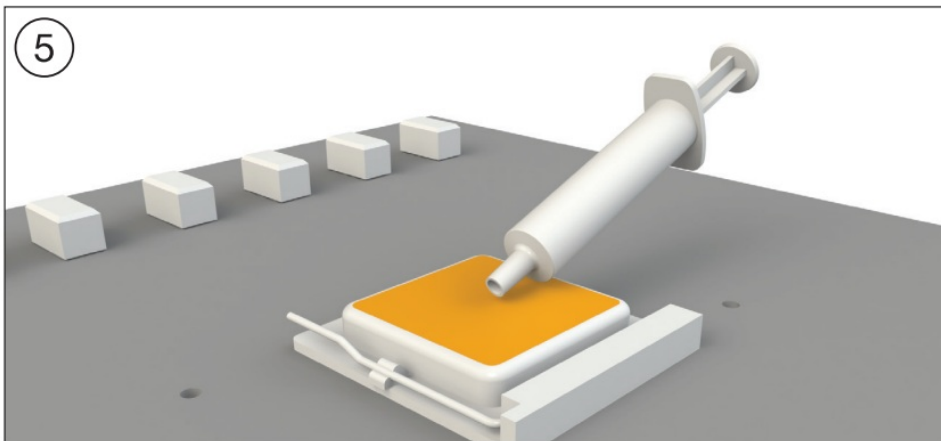
Affix the fans (2) to the radiator with the fan mounting screws (14). An installation in a push configuration (120mm: push pull) is being recommended, as shown in the picture. Next connect the fans (2) to the CPU connection of the motherboard. You can use the Y-cable (19) for this.



#### Affixing the radiator to the case

Fix the radiator of Silent Loop 2 (1) with the radiator mounting screws (13) to the case. You can use a normal crosshead screwdriver for this.

If you use the Silent Loop 2 120mm in a push pull configuration, fix the radiator as well as one of the fans (2) with the fan mounting screws (14) to the case.



#### Mounting of the CPU block

First peel off the protective film from the underside of the cooler. Apply thermal paste (16) on the CPU surface. The tube contains enough for about 1 or 2 applications.

**Caution:** The thermal paste supplied should not be swallowed. If any is swallowed, drink lots of water and urgently seek the advice of a doctor. Store it beyond the reach of children. Avoid contact with skin and eyes.



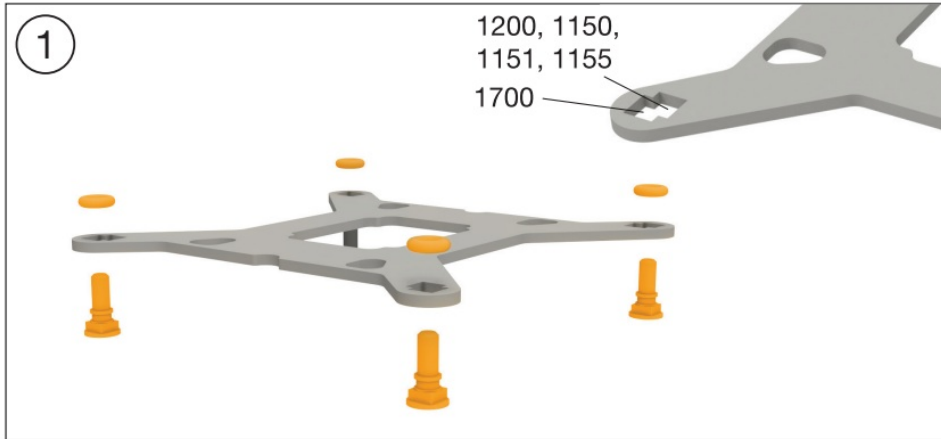
Place the CPU block centrally over the short AMD mounting brackets (6), such that these allow the CPU block to be screwed down. For this you can use a normal crosshead screwdriver. Next connect the pump to the motherboard.

**Warning:** The pump requires 9V – 12V to operate properly. Lower voltages can lead to loss of performance and faults. Please continue on page 23.

## Intel LGA 1700 / 1200 / 1150 / 1151 / 1155

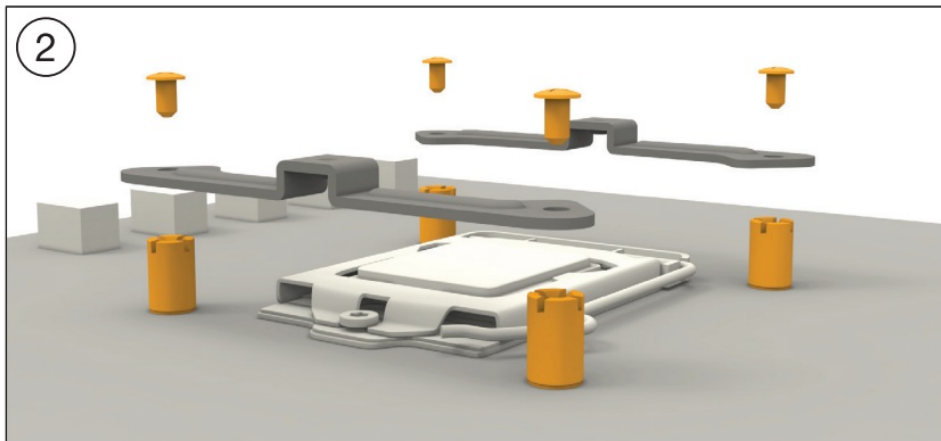
### The following parts are needed for this:

Silent Loop 2 CPU cooler (1), fans (2), Intel Backplate (3), Intel mounting brackets (4), Intel mounting brackets LGA 1700 (5), Intel spacer nut B (8), Mounting bracket fastening screws (10), Intel backplate screws (11), Radiator mounting screws (13), Fan mounting screws (14), O-Rings (15), Thermal paste (16), Y-cable (19)



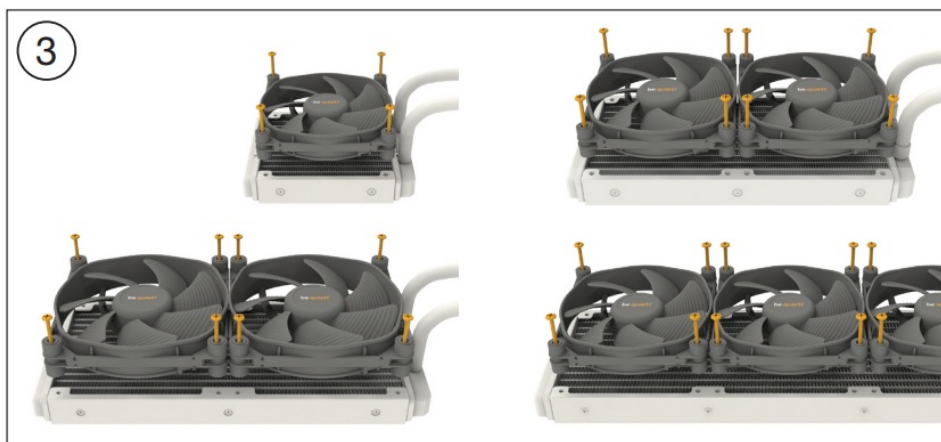
### Affixing the backplate

Place the Intel backplate screws (11) in the notches found on the rear of the Intel backplate (3). Observe the drilled holes for the actual CPU socket. Use the O-rings (15) to fasten the backplate screws (11) on the Intel backplate (3). Once the Intel backplate (3) is assembled for the actual Intel socket, position it beneath the motherboard. Make sure that the Intel backplate screws (11) exactly match the positions of the motherboard holes.



### Installation of the mounting bridges

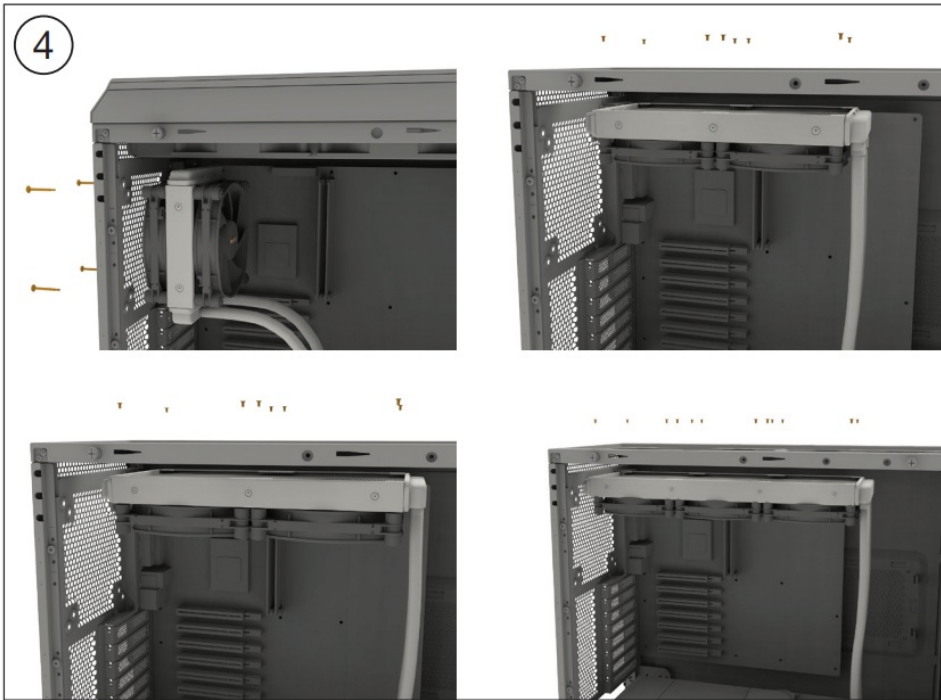
Screw the Intel spacer nut B (8) onto the previously positioned Intel backplate (3). Then position, depending on your socket, the Intel mounting brackets (4) or Intel mounting brackets LGA 1700 (5) over the Intel spacer nut B (8) and affix these with the mounting bracket fastening screws (10). You can use any cross-tip screwdriver for this.



### Mounting the fans on the radiator

Affix the fans (2) to the radiator with the fan mounting screws (14). An installation in a push configuration (120mm: push pull) is being recommended, as shown in the picture. Next connect the fans (2) to the CPU connection of the motherboard. You can use the Y-cable (19) for this.

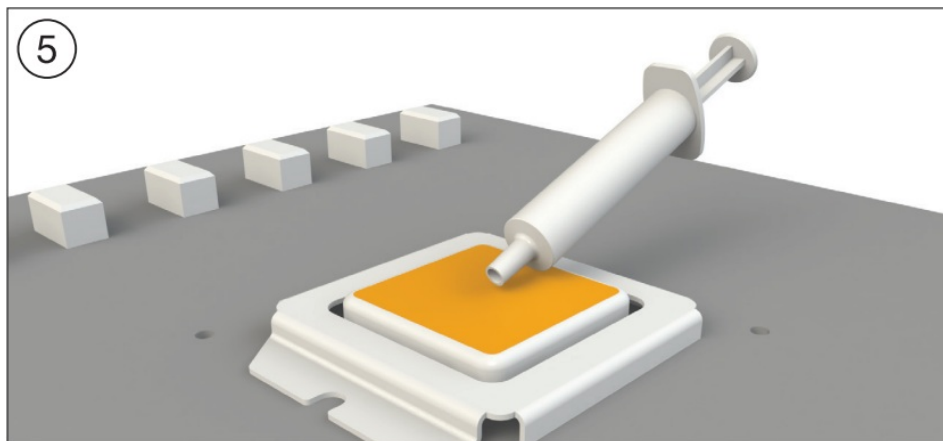




#### Affixing the radiator to the case

Fix the radiator of Silent Loop 2 (1) with the radiator mounting screws (13) to the case. You can use a normal crosshead screwdriver for this.

If you use the Silent Loop 2 120mm in a push pull configuration, fix the radiator as well as one of the fans (2) with the fan mounting screws (14) to the case.



#### Mounting of the CPU block

First peel off the protective film from the underside of the cooler. Apply thermal paste (16) on the CPU surface. The tube contains enough for about 1 or 2 applications.

**Caution:** The thermal paste supplied should not be swallowed. If any is swallowed, drink lots of water and urgently seek the advice of a doctor. Store it beyond the reach of children. Avoid contact with skin and eyes.



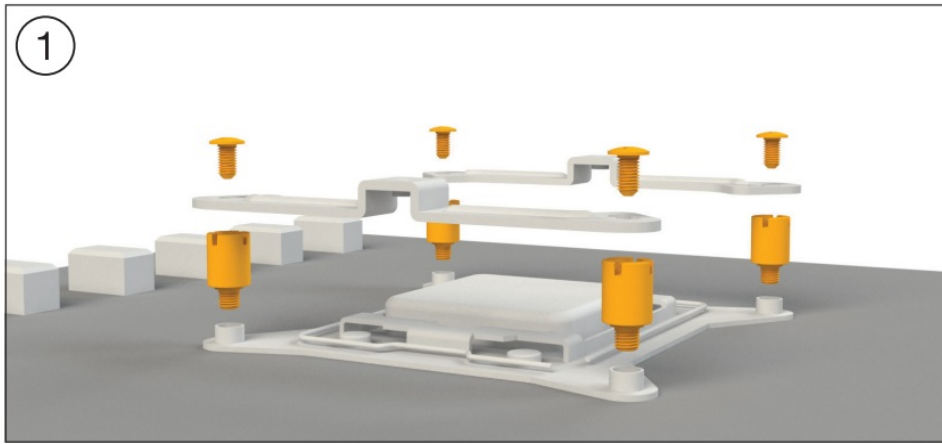
Place the CPU block centrally over the Intel mounting brackets (4) or Intel mounting brackets LGA 1700 (5), such that these allow the CPU block to be screwed down. For this you can use a normal crosshead screwdriver. Next connect the pump to the motherboard.

**Warning:** The pump requires 9V – 12V to operate properly. Lower voltages can lead to loss of performance and faults.

Please continue on page 23.

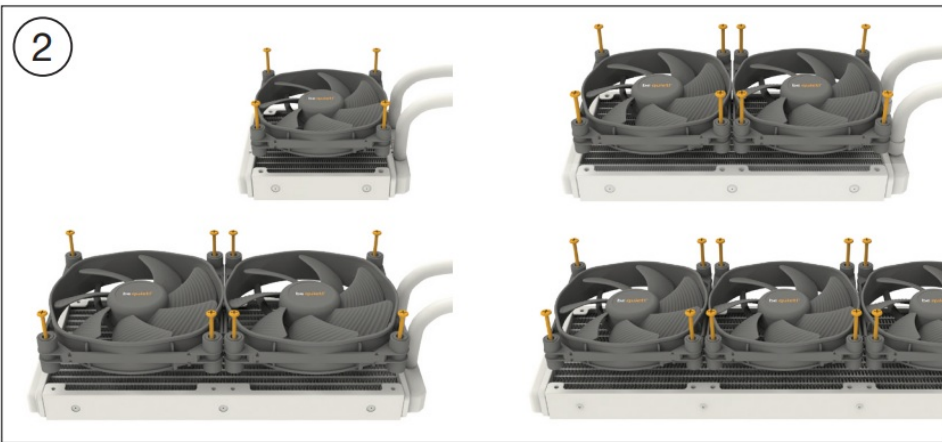
The following parts are needed for this:

Silent Loop 2 CPU cooler (1), fans (2), Intel mounting brackets (4), Intel spacer nut A (7), Mounting bracket fastening screws (10), Radiator mounting screws (13), Fan mounting screws (14), Thermal paste (16), Y-cable (19)



#### Assembly of the cooler mounting frame

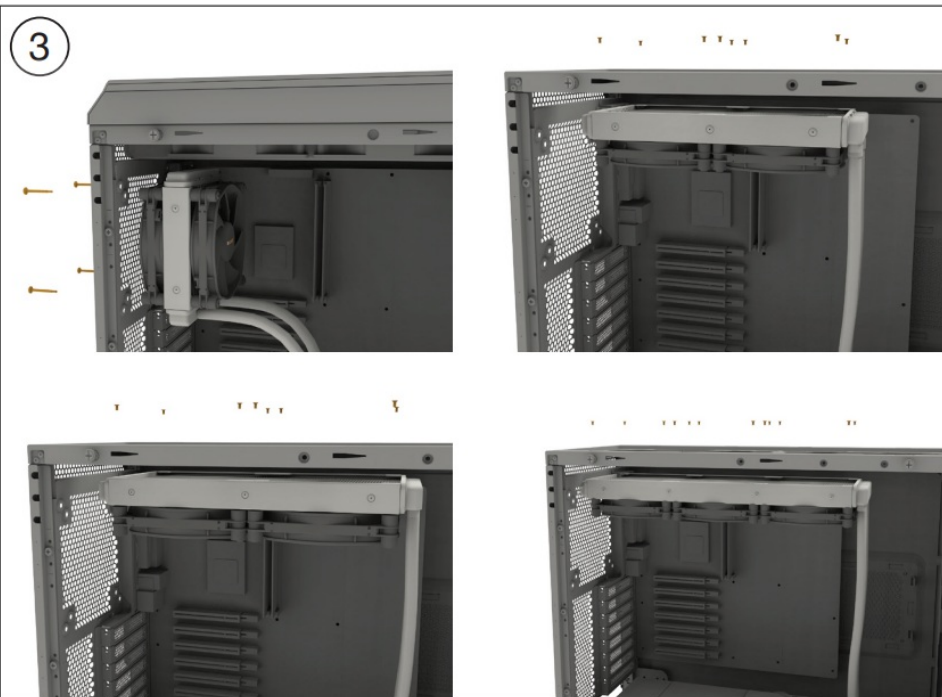
First screw the Intel spacer nuts A (7) into the threaded holes of the socket frame. Place both the Intel mounting brackets (4) over the bolts and affix these with the fixing screws for the mounting bridges (10). To do this you can use a normal crosshead screwdriver.



#### Mounting the fans on the radiator

Affix the fans (2) to the radiator with the fan mounting screws (14). An installation in a push configuration (120mm: push pull) is being recommended, as shown in the picture. Next connect the fans (2) to the CPU connection of the motherboard. You can use the Y-cable (19) for this.

#### Intel LGA 2011(-3) square ILM / LGA 2066

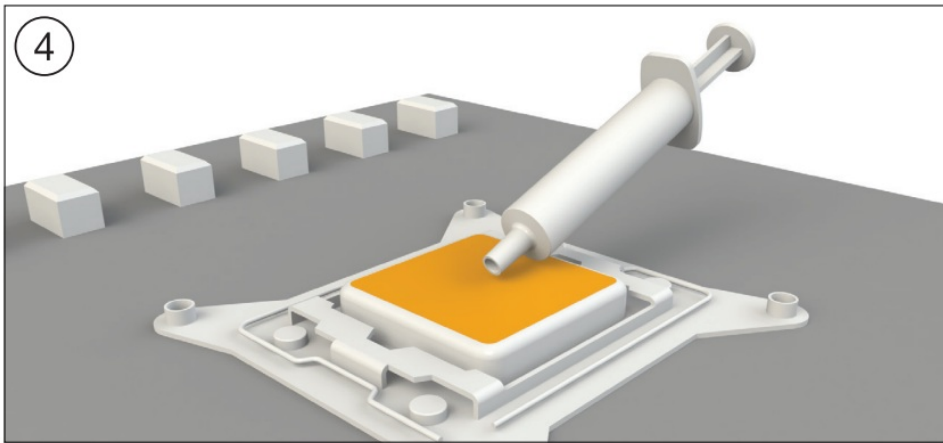


#### Affixing the radiator to the case

Fix the radiator of Silent Loop 2 (1) with the radiator mounting screws (13) to the case. You can use a normal crosshead screwdriver for this.

If you use the Silent Loop 2 120mm in a push pull configuration, fix the radiator as well as one of the fans (2) with the fan mounting screws (14) to the case.

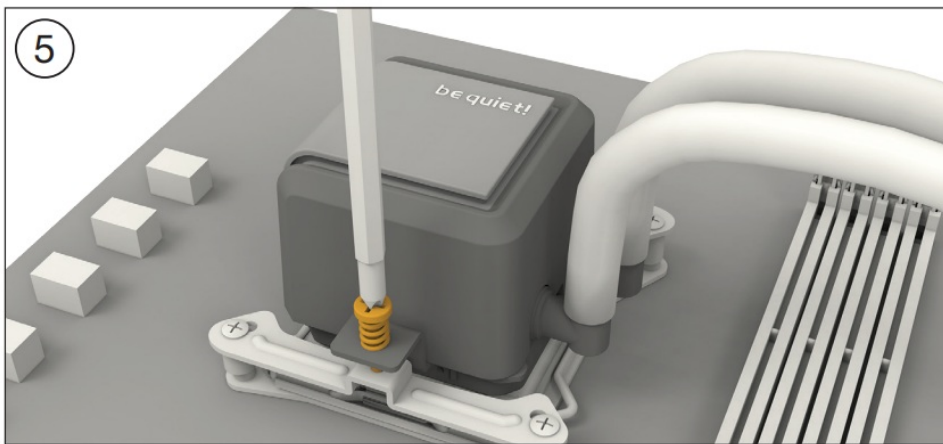




#### Mounting of the CPU block

First peel off the protective film from the underside of the cooler. Apply thermal paste (16) on the CPU surface. The tube contains enough for about 1 or 2 applications.

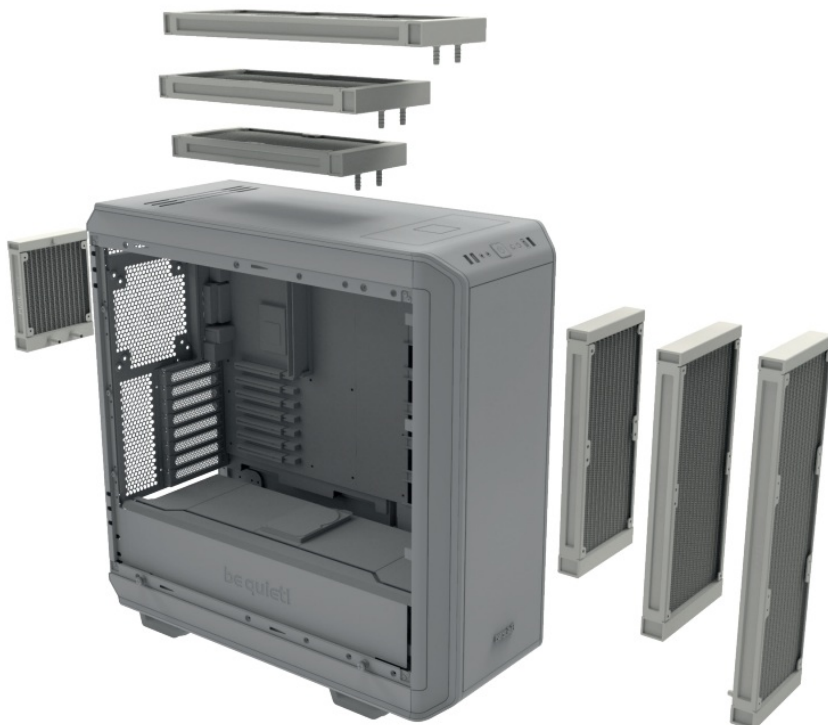
**Caution:** The thermal paste supplied should not be swallowed. If any is swallowed, drink lots of water and urgently seek the advice of a doctor. Store it beyond the reach of children. Avoid contact with skin and eyes.



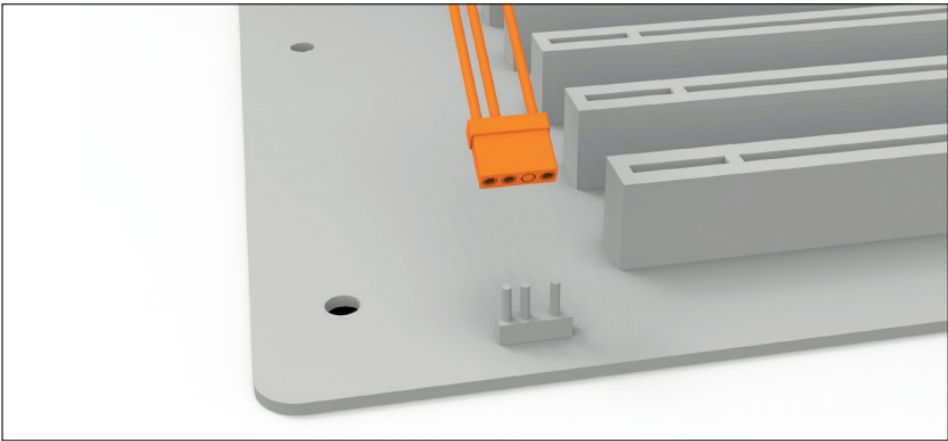
Place the CPU block centrally over the Intel mounting brackets (4), such that these allow the CPU block to be screwed down. For this you can use a normal crosshead screwdriver. Next connect the pump to the motherboard.

**Warning:** The pump requires 9V – 12V to operate properly. Lower voltages can lead to loss of performance and faults.

#### RECOMMENDED INSTALLATION



#### ILLUMINATION



Synchronization of ARGB illumination with the motherboard  
 Silent Loop 2 (1) enables you to synchronize the ARGB illumination directly via your motherboard.  
 To do that switch off your system prior to installation. Next connect the ARGB connector with your motherboard. Now the ARGB illumination is being controlled by the software of the motherboard.  
**Warning:** The ARGB connector may only be connected to a 5V ARGB header.

▲

▼

Next

Previous

Select mode

Illumination effect

Color

Speed

Brightness

Special effects

M

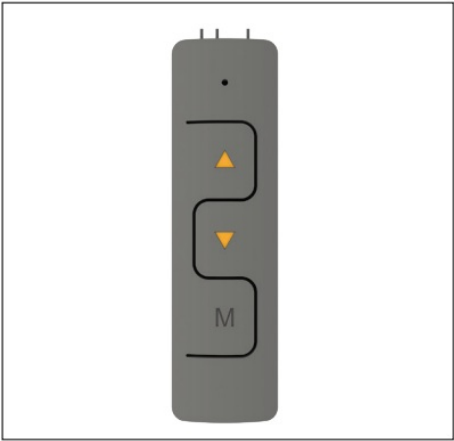
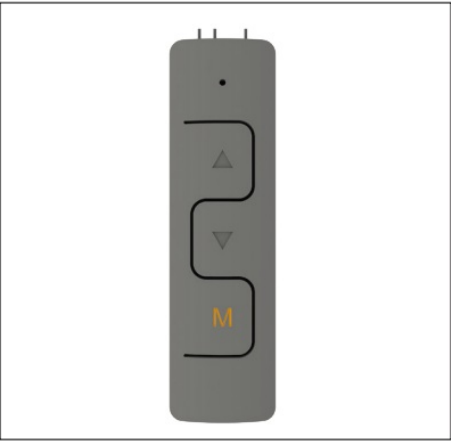
Yellow

Orange

Green

Blue

Red



**RGB control via ARGB controller**  
 You can optionally control the ARGB illumination via the ARGB controller (20). To do that, connect the latter with the ARGB connector of Silent Loop 2 (1) and use the SATA cable for ARGB controller (18) for connection of the ARGB controller (20) with your power supply.  
 The LED of the ARGB controller (20) glows in different colors depending on the mode. Please read the chart to know which color represents which mode.



Switching logo illumination on/off

Insert ON/OFF tool (21) in the slot to switch illumination of the logo of be quiet! on and off.

REFILLING THE SYSTEM



**Caution:** For refilling only use the included coolant bottle. Coolants not specifically meant for this product may damage the unit.



#### Refilling the system

Topup the system after about two years of use. In order to do this, first detach the radiator from the case. The filling port is on the opposite end of the hoses. Open this as well as the bottle with cooling fluid (17). Rotate the bottle into the filling port. Hold the radiator so that the filling port is at the highest level with the bottle upended over it. Then lightly squeeze the bottle. Repeat this until no further air bubbles appear in the bottle.

## TROUBLESHOOTING

### Insufficient cooling performance

- Ensure the CPU block is mounted as described in the instructions. Use only the mounting equipment supplied with the unit.
- Please operate the pump with 9 to 12 volts. No voltage regulator below 9V should be used, because this can damage the device.
- Have you applied too much or too little thermal paste? It is sufficient when it thinly covers the back of the CPU.
- After a drop in coolant is apparent, it is advisable to top up the coolant level to maintain optimum cooling performance. For the correct way to top up the coolant, refer to the installation instructions.
- Please ensure that the airflow of the fans is not restricted, to guarantee their maximum performance.
- Check that sufficient room is allocated to the radiator, so it is able to draw in sufficient cooling air and expel the warmed air.

### Produces more noise

- Check the coolant level and if necessary top it up. The right way to do this is described in the installation instructions. When the coolant level is too low, it leads to more noise and can damage the device.
- The radiator must be mounted in a suitable position in the case to prevent vibration and turbulence in the airflow. Please also note any advice given by the manufacturer of the case.
- Make sure that no tubes or cables come into contact with fans in the case. Bubbles of air may have become trapped in the pump's impeller during transportation. It may be possible to free the impeller by repeated switching on and/or loading cycles.

### Painted surfaces of the radiator

- The Silent Loop 2 water cooler uses an aluminum radiator, which is originally silver in color. The radiator is lightly tinted with black paint, which from certain perspectives might not be entirely opaque. This outer paint cover does not affect the cooling performance in any way.
- The Silent Loop 2 water cooler is a cooling unit intended for the cooling of processors and made solely for that purpose. If you plan to open up or modify its closed system we are no longer able to guarantee its functionality or cooling performance in any way. Please only allow authorized service technicians to undertake repairs. Opening the device besides of the refillport voids the warranty.
- Should you experience any other problems with the water cooler, please get in touch with our service department. You will find our contact details at [www.bequiet.com](http://www.bequiet.com).

## LIMITED WARRANTY

### I. APPLICABILITY

This non-transferable warranty is applicable to newly purchased, previously unopened be quiet! products and is enforceable by only the original consumer purchaser. Proof of purchase is required for warranty service, so should be retained. be quiet! does not provide warranty registration services.

### II. WARRANTY PERIOD

For eligible products, parts and labor are warranted for the applicable warranty period from the date of purchase. The applicable warranty period varies by product model, and is identified in your user documentation, on the product package, or as listed below. Should any of these warranty periods differ, the longest specified warranty period will

apply. Replaced products will be warranted for the remainder of the original warranty period or thirty days, whichever is longer.

### III. EXCLUSIONS

The following are not covered by the warranty:

1. Normal wear and tear.
2. Any product which has been modified without permission from be quiet!, or on which the serial number or warranty sticker has been defaced, modified, or removed.
3. Damage, deterioration or malfunction resulting from: Accident, abuse, misuse or improper use, neglect, connection to an improper voltage source, unauthorized product modification, or failure to follow instructions included with the product. Fire, water, lightning, or other acts of nature. Repair or attempted repair by anyone not authorized by be quiet!. Shipping or transport damage (claims must be made with the carrier). Any other cause which does not relate to a defect in materials or manufacturing workmanship.
4. Cartons, cases, batteries, cabinets, tapes, accessories or other consumables used with this product.
5. be quiet!, Inc. does not warrant that this product will meet your requirements. It is your responsibility to determine the suitability of this product for your purpose.
6. Removal or installation charges.
7. Shipping charges.
8. Any incidental charges.

### IV. EXCLUSION OF DAMAGES

be quiet!'s sole obligation and liability under this warranty is limited to the repair or replacement of a defective product at its option. be quiet! shall not, in any event, be liable for any special, incidental, indirect, or consequential damages whatsoever, including but not limited to loss of profits, revenue, or data (whether direct or

indirect), damages resulting from interruption of service and loss of business, or for liability in tort relating to this product or resulting from its use or possession, even if be quiet! has been advised previously of the possibility of such damages.

**V. LIMITATIONS OF IMPLIED WARRANTIES**

There are no other warranties, expressed or implied, including but not limited to those of merchantability or fitness for a particular purpose. The duration of implied warranties is limited to the warranty length specified in Paragraph II.

**VI. LOCAL LAW AND YOUR WARRANTY**

This warranty gives you specific legal rights. You may also have other rights granted under local law. These rights may vary.

**VII. NO OTHER WARRANTY**

No be quiet! employee, dealer, or other agent is authorized to make any modification, extension, or addition to this warranty.

**VIII. TO OBTAIN TECHNICAL SUPPORT OR WARRANTY SERVICE**

Please see your product owner's manual or visit the Online Support section at [www.bequiet.com](http://www.bequiet.com)



**Documents / Resources**



[be quiet! Silent Loop 2 CPU Cooler](#) [pdf] Instruction Manual

360mm Silent Loop 2, 280mm Silent Loop 2, 240mm Silent Loop 2, 120mm Silent Loop 2, Silent Loop 2, Silent Loop, Silent Loop 2 CPU Cooler, CPU Cooler, Cooler

**References**

- [be quiet! - Silent PSUs, cases and PC cooling products. PSU calculator and cooler check for your PC](#)
- [be quiet! - Silent PSUs, cases and PC cooling products. PSU calculator and cooler check for your PC](#)
- [be quiet! - Silent PSUs, cases and PC cooling products. PSU calculator and cooler check for your PC](#)
- [be quiet! - Silent PSUs, cases and PC cooling products. PSU calculator and cooler check for your PC](#)
- [be quiet! - Silent PSUs, cases and PC cooling products. PSU calculator and cooler check for your PC](#)
- [be quiet! - Silent PSUs, cases and PC cooling products. PSU calculator and cooler check for your PC](#)

**[Manuals+](#)**

- [home](#)
- [privacy](#)