



be quiet! PURE LOOP 2 FX CPU Cooler Installation Guide

[Home](#) » [be quiet!](#) » be quiet! PURE LOOP 2 FX CPU Cooler Installation Guide 

be quiet! PURE LOOP 2 FX CPU Cooler Installation Guide



Contents

- [1 LIMITED WARRANTY](#)
- [2 APPLICABILITY](#)
- [3 WARRANTY PERIOD](#)
- [4 EXCLUSIONS](#)
- [5 EXCLUSION OF DAMAGES](#)
- [6 LIMITATIONS OF IMPLIED WARRANTIES](#)
- [7 LOCAL LAW AND YOUR WARRANTY](#)
- [8 NO OTHER WARRANTY](#)
- [9 TO OBTAIN TECHNICAL SUPPORT OR WARRANTY SERVICE](#)
- [10 Documents / Resources](#)
 - [10.1 References](#)
- [11 Related Posts](#)

LIMITED WARRANTY

APPLICABILITY

This non-transferable warranty is applicable to newly purchased, previously unopened be quiet! products and is enforceable by only the original consumer purchaser. Proof of purchase is required for warranty service, so should be retained. be quiet! does not provide warranty registration services.

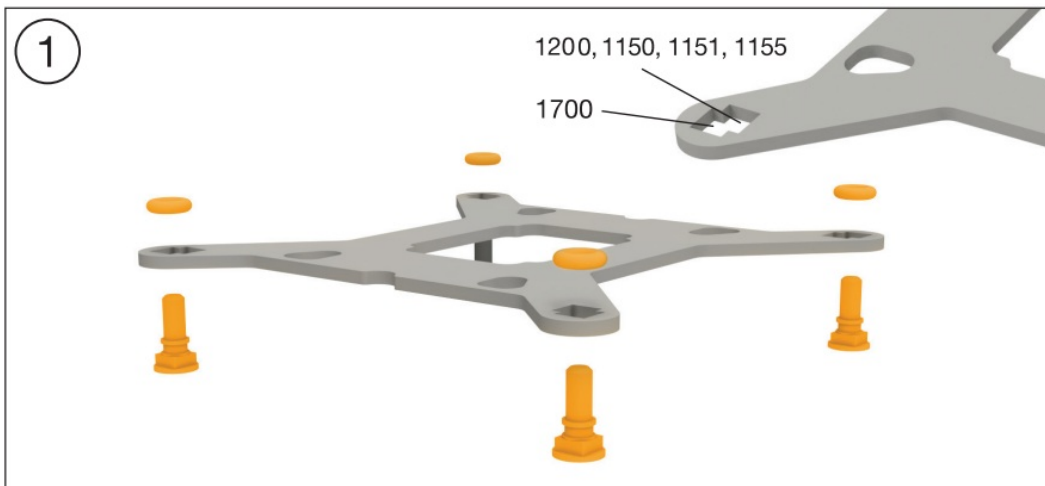
WARRANTY PERIOD

For eligible products, parts and labor are warranted for the applicable warranty period from the date of purchase. The applicable warranty period varies by product model, and is identified in your user documentation, on the product package, or as listed below. Should any of these warranty periods differ, the longest specified warranty period will apply. Replaced products will be warranted for the remainder of the original warranty period or thirty days, whichever is longer.

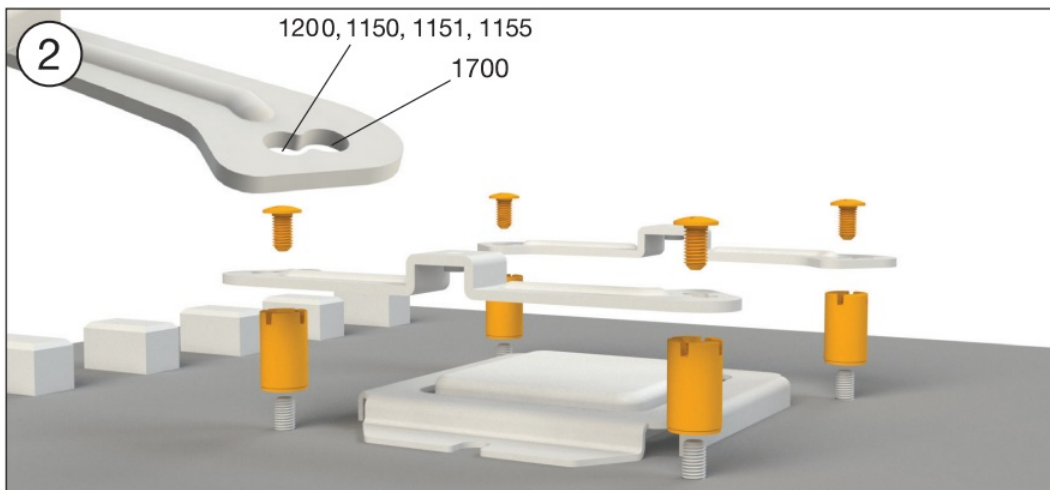
EXCLUSIONS

The following are not covered by the warranty:

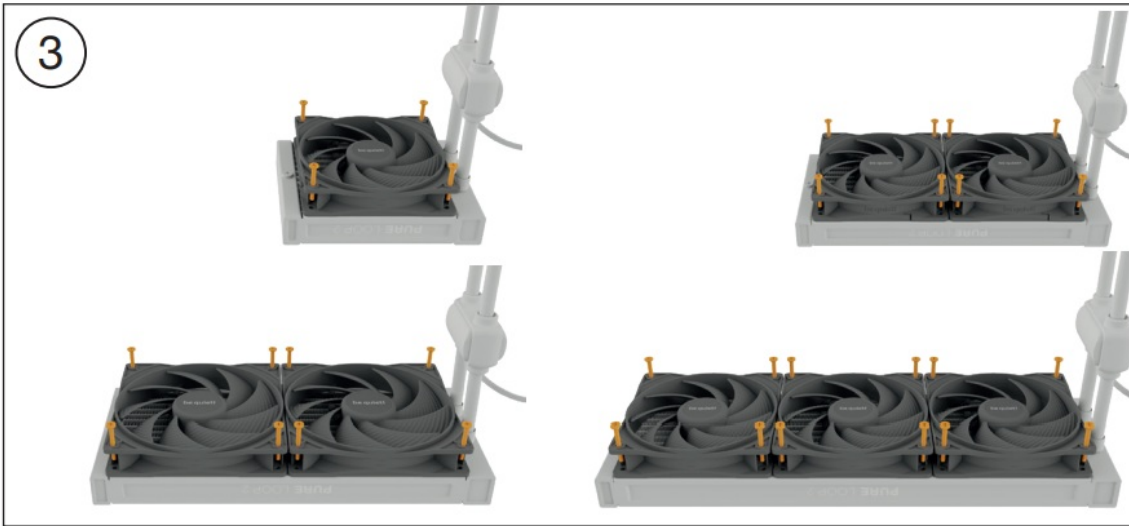
1. Normal wear and tear.



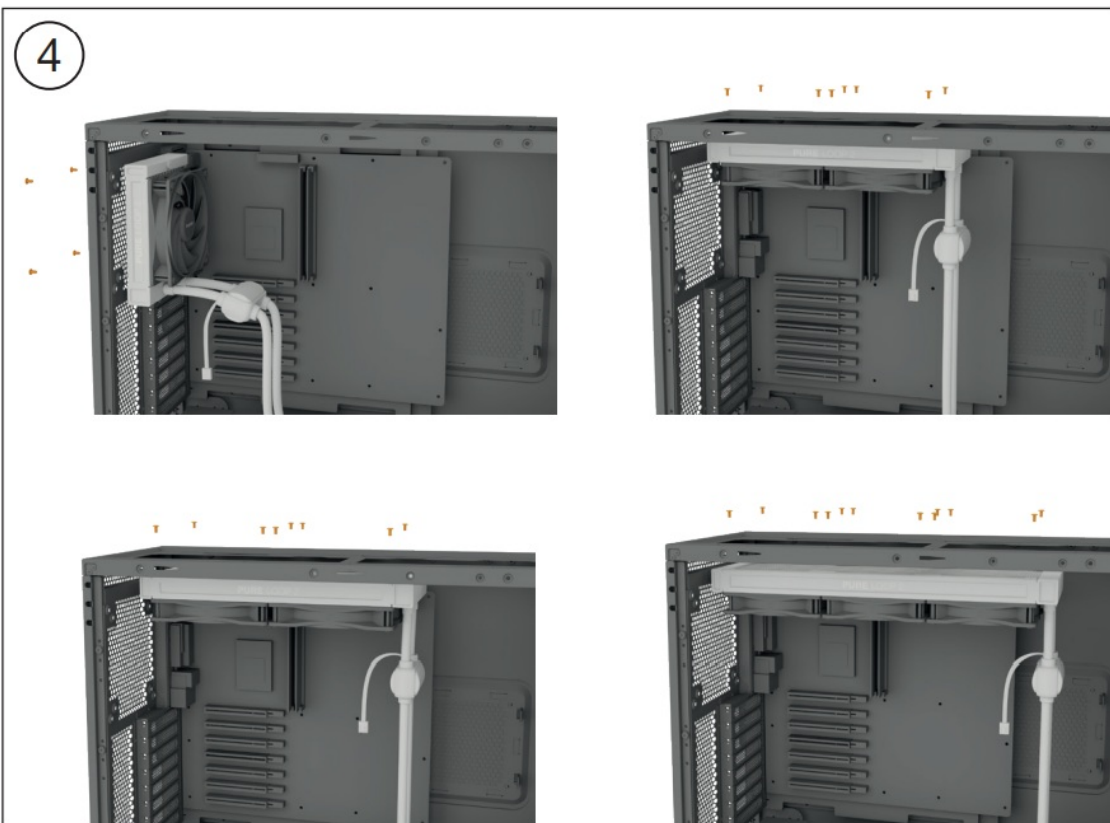
2. Any product which has been modified without permission from be quiet!, or on which the serial number or warranty sticker has been defaced, modified, or removed.



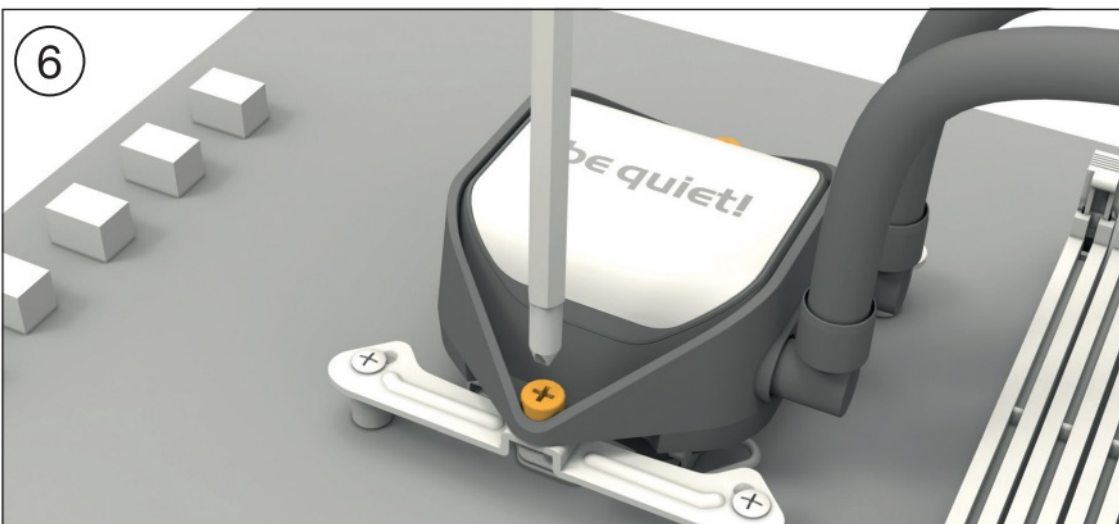
3. Damage, deterioration or malfunction resulting from: Accident, abuse, misuse or improper use, neglect, connection to an improper voltage source, unauthorized product modification, or failure to follow instructions included with the product. Fire, water, lightning, or other acts of nature. Repair or attempted repair by anyone not authorized by be quiet!. Shipping or transport damage (claims must be made with the carrier). Any other cause which does not relate to a defect in materials or manufacturing workmanship.



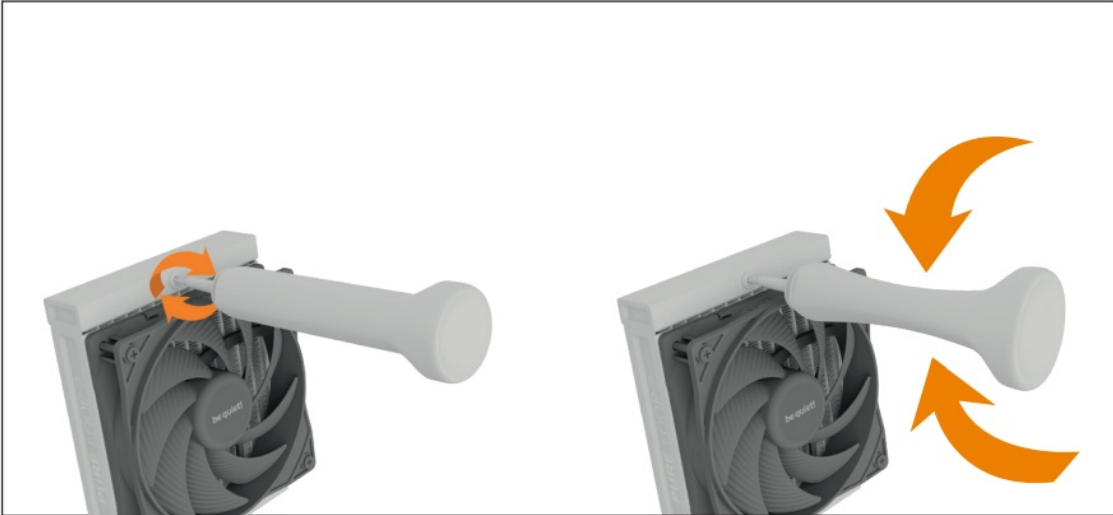
4. Cartons, cases, batteries, cabinets, tapes, accessories or other consumables used with this product.



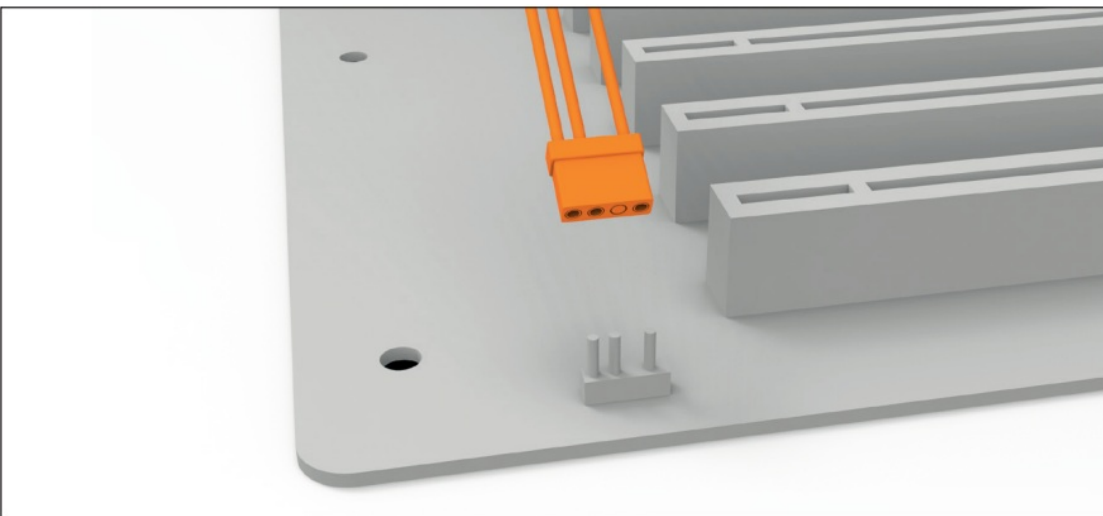
5. be quiet!, Inc. does not warrant that this product will meet your requirements. It is your responsibility to determine the suitability of this product for your purpose.



6. Removal or installation charges.



7. Shipping charges.



8. Any incidental charges.

EXCLUSION OF DAMAGES

be quiet's sole obligation and liability under this warranty is limited to the repair or replacement of a defective product at its option. be quiet! shall not, in any event, be liable for any special, incidental, indirect, or consequential damages whatsoever, including but not limited to loss of profits, revenue, or data (whether direct or indirect), damages resulting from interruption of service and loss of business, or for liability in tort relating to this product or resulting from its use or possession, even if be quiet! has been advised previously of the possibility of such damages.

LIMITATIONS OF IMPLIED WARRANTIES

There are no other warranties, expressed or implied, including but not limited to those of merchantability or fitness for a particular purpose. The duration of implied warranties is limited to the warranty length specified in Paragraph II.

LOCAL LAW AND YOUR WARRANTY

This warranty gives you specific legal rights. You may also have other rights granted under local law. These rights may vary.

NO OTHER WARRANTY

No be quiet! employee, dealer, or other agent is authorized to make any modification, extension, or addition to this warranty.

TO OBTAIN TECHNICAL SUPPORT OR WARRANTY SERVICE

Please see your product owner's manual or visit the Online Support section at www.bequiet.com

360mm



www.bequiet.com/BW019

280mm



www.bequiet.com/BW018

240mm



www.bequiet.com/BW017

120mm



www.bequiet.com/BW016






Documents / Resources



[be quiet! PURE LOOP 2 FX CPU Cooler](#) [pdf] Installation Guide
PURE LOOP 2, PURE LOOP 2 FX CPU Cooler, FX CPU Cooler, CPU Cooler, Cooler

References

-  [be quiet! - Silent PSUs, cases and PC cooling products. PSU calculator and cooler check for your PC](#)
-  [be quiet! - Silent PSUs, cases and PC cooling products. PSU calculator and cooler check for your PC](#)
-  [be quiet! - Leise Netzteile, Gehäuse und PC Kühlungsprodukte. PSU Kalkulator und Kühler Check für](#)

[Ihren PC](#)

- [!\[\]\(6841ca9b0e023296428e7c9e683b9367_img.jpg\) be quiet! - Leise Netzteile, Gehäuse und PC Kühlungsprodukte. PSU Kalkulator und Kühler Check für Ihren PC](#)
- [!\[\]\(e258e347e7683f87061f627f84598eb5_img.jpg\) be quiet! - Leise Netzteile, Gehäuse und PC Kühlungsprodukte. PSU Kalkulator und Kühler Check für Ihren PC](#)
- [!\[\]\(1233990ad3f0b7475c568d7bf16af31f_img.jpg\) be quiet! - Leise Netzteile, Gehäuse und PC Kühlungsprodukte. PSU Kalkulator und Kühler Check für Ihren PC](#)
- [User Manual](#)

[Manuals+](#), [Privacy Policy](#)

This website is an independent publication and is neither affiliated with nor endorsed by any of the trademark owners. The "Bluetooth®" word mark and logos are registered trademarks owned by Bluetooth SIG, Inc. The "Wi-Fi®" word mark and logos are registered trademarks owned by the Wi-Fi Alliance. Any use of these marks on this website does not imply any affiliation with or endorsement.