

## be quiet! Light Wings White PWM High-Speed User Manual

[Home](#) » [be quiet!](#) » be quiet! Light Wings White PWM High-Speed User Manual 

be quiet! Light Wings White PWM High-Speed



## Contents

- 1 Introduction:
- 2 SCOPE OF DELIVERY
- 3 Installation of Light Wings White
- 4 be quiet! Limited Warranty
  - 4.1 APPLICABILITY
  - 4.2 WARRANTY PERIOD
  - 4.3 EXCLUSIONS
  - 4.4 EXCLUSION OF DAMAGES
  - 4.5 LIMITATIONS OF IMPLIED WARRANTIES
  - 4.6 LOCAL LAW AND YOUR WARRANTY
  - 4.7 NO OTHER WARRANTY
  - 4.8 VIII. TO OBTAIN TECHNICAL SUPPORT OR WARRANTY SERVICE
- 5 Documents / Resources
  - 5.1 References
- 6 Related Posts







## Introduction:

Thank you for deciding to purchase a be quiet! product. The following instructions will guide you through the installation process. If you do encounter installation problems, please don't hesitate to contact our customer services by mailing [service@bequiet.com](mailto:service@bequiet.com). Please note that be quiet! cannot accept liability for damage caused by compatibility problems.

## Warranty:

- 3-year manufacturer guarantee for consumers (original purchase from authorized be quiet! dealers only)
- Guarantee work can only be processed with a copy included of the purchase receipt from an authorized be quiet! dealer
- Manipulation and structural changes of any kind, including any damage caused by external mechanical force, will lead to a complete voiding of the guarantee
- Our General Warranty Conditions apply, which can be viewed on [bequiet.com](https://www.bequiet.com)

## SCOPE OF DELIVERY

	Part name	Quantity
<b>1</b> 	be quiet! Light Wings White fans	3
<b>2</b> 	ARGB Hub	1
<b>3</b> 	Double coated tissue tape	1
<b>4</b> 	Fan screws	12
<b>5</b> 	Fastening screws for ARGB Hub	4
<b>6</b> 	ARGB cable	1

## Installation of Light Wings White

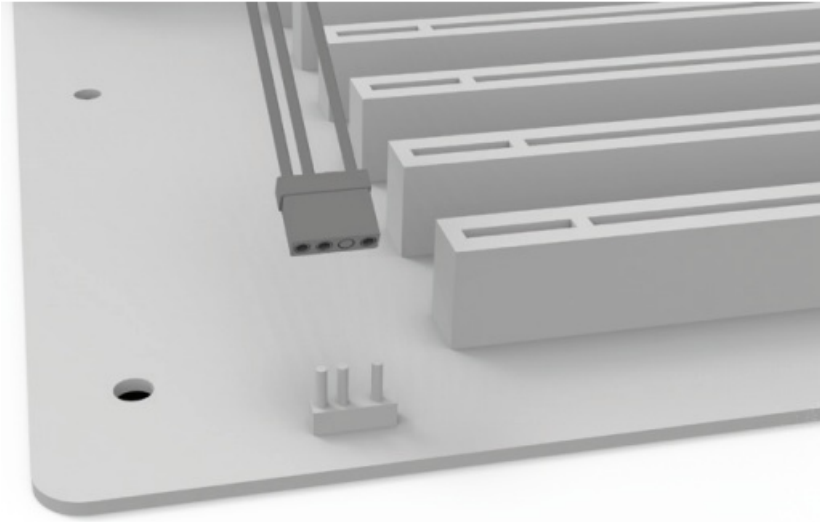
1. Screw down the fans using the fan screws.



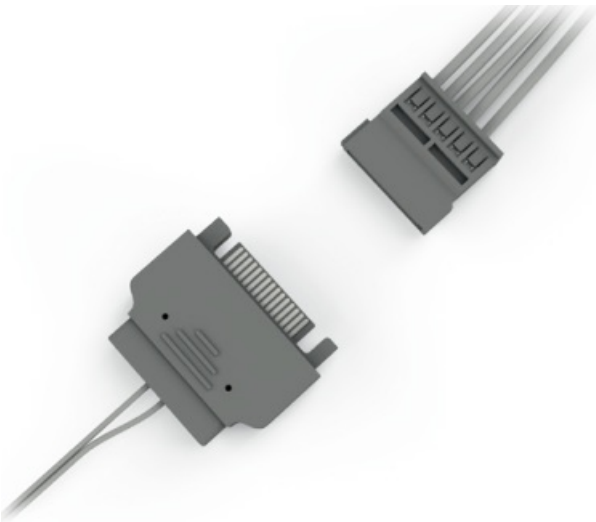
2. The ARGB Hub allows you to synchronize up to six 5V ARGB devices directly through your motherboard. To do that switch off your system prior to installation. Next combine the connector of the fan with one of 6 LED headers.



3. Use the ARGB cable to connect the RGB IN connector of the ARGB Hub with the 5V ARGB connector of the motherboard.



4. Connect the SATA cable of the ARGB Hub with a SATA header of your power supply. Next attach the ARGB Hub with the screws or double coated tissue tape on the case.



## **be quiet! Limited Warranty**

Per the terms and conditions of this limited warranty as given below, be quiet! warrants its new products to be free of defects resulting from faulty materials and faulty manufacturing for the length of the warranty period.

### **APPLICABILITY**

This non-transferable warranty is applicable to newly purchased, previously unopened be quiet! products and is enforceable by only the original consumer purchaser. Proof of purchase is required for warranty service, so should be retained. be quiet! does not provide warranty registration services.

### **WARRANTY PERIOD**

For eligible products, parts and labor are warranted for the applicable warranty period from the date of purchase. The applicable warranty period varies by product model, and is identified in your user documentation, on the product package, or as listed below. Should any of these warranty periods differ, the longest specified warranty period will apply. Replaced products will be warranted for the remainder of the original warranty period or thirty days, whichever is longer.

### **EXCLUSIONS**

The following are not covered by the warranty:

1. Normal wear and tear.
2. Any product which has been modified without permission from be quiet!, or on which the serial number or warranty sticker has been defaced, modified, or removed.
3. Damage, deterioration or malfunction resulting from:
  - Accident, abuse, misuse or improper use, neglect, connection to an improper voltage source, unauthorized product modification, or failure to follow instructions included with the product.
  - Fire, water, lightning, or other acts of nature.
  - Repair or attempted repair by anyone not authorized by be quiet!.
  - Shipping or transport damage (claims must be made with the carrier).
  - Any other cause which does not relate to a defect in material's or manufacturing workmanship.
4. Cartons, cases, batteries, cabinets, tapes, accessories or other consumables used with this product.
5. be quiet!, Inc. does not warrant that this product will meet your requirements. It is your responsibility to determine the suitability of this product for your purpose.
6. Removal or installation charges.
7. Shipping charges.
8. Any incidental charges.

#### **EXCLUSION OF DAMAGES**

be quiet!'s sole obligation and liability under this warranty is limited to the repair or replacement of a defective product at its option. be quiet! shall not, in any event, be liable for any special, incidental, indirect, or consequential damages whatsoever, including but not limited to loss of profits, revenue, or data (whether direct or indirect), damages resulting from interruption of service and loss of business, or for liability in tort relating to this product or resulting from its use or possession, even if be quiet! has been advised previously of the possibility of such damages

#### **LIMITATIONS OF IMPLIED WARRANTIES**

There are no other warranties, expressed or implied, including but not limited to those of merchantability or fitness for a particular purpose. The duration of implied warranties is limited to the warranty length specified in Paragraph II.

#### **LOCAL LAW AND YOUR WARRANTY**

This warranty gives you specific legal rights. You may also have other rights granted under local law. These rights may vary

#### **NO OTHER WARRANTY**

No be quiet! employee, dealer, or other agent is authorized to make any modification, extension, or addition to this warranty

#### **VIII. TO OBTAIN TECHNICAL SUPPORT OR WARRANTY SERVICE**

Please see your product owner's manual or visit the Online Support section at [www.bequiet.com](http://www.bequiet.com) for details and contact information. You will need to provide proof of purchase for warranty service

Points de collecte sur [www.quefairedemesdechets.fr](http://www.quefairedemesdechets.fr)

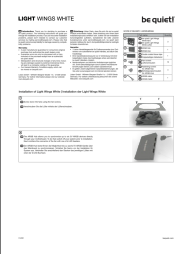


UK  
CA

UK Authorised Representative (for authorities only)  
ProductIP (UK) Ltd.  
8, Northumberland Av. London WC2N 5BY

# be quiet!®

## Documents / Resources

	<p><a href="#">be quiet! Light Wings White PWM High-Speed</a> [pdf] User Manual Light Wings White PWM High-Speed, White PWM High-Speed, PWM High-Speed, High-Speed , Light Wings White, Light Wings</p>
---	---

## References

- [be quiet! - Silent PSUs, cases and PC cooling products. PSU calculator and cooler check for your PC](#)
- [be quiet! - Silent PSUs, cases and PC cooling products. PSU calculator and cooler check for your PC](#)
- [Info-tri | Ministères Écologie Énergie Territoires](#)