

BE COOL WiFi Connect User Manual

Contents

1 WiFi Connect

1.1 Current operating instructions and other languages

1.2 Let's get start!

1.3 Basic parameters for Wi-Fi:

1.4 5. Activation QR code

1.5 3. Activation code words: BECOOL

1.6 Registration

1.7 6. Tap ">" and choose the country.

1.8 Log in

1.9 Log in

1.10 Add device

1.11 Trouble Shooting

2 Documents / Resources

2.1 References

3 Related Posts

WiFi Connect



Current operating instructions and other languages

Download current user manuals in various languages via the link www.becool.at/downloads or scan the displayed QR code. Follow the instructions on the website.



This description is applied to appliance with Wi-Fi function. Please read the manual carefully before using the product and keep it for future reference.

Note: Only for portable air conditioner

Current operating instructions and other languages

Download current user manuals in various languages via the link

www.becool.at/downloads or scan the displayed QR code. Follow the instructions on the website.



Let's get start!

Operation guideline. Please take below simple guideline instruction as reference.

Operation Steps	Operation Items	New Account	Re-install APP (registered before)
Step 1	Download and Install APP	YES	YES
Step 2	Active APP	YES	YES
Step 3	Registration Account	YES	NO
Step 4	Login	YES	YES
Step 5	Add Device to control	YES	Registered Device will remain.

FCC Caution

FC

Contains FCC ID:2ANDL-TYWE1S

Contains IC ID:23243-TYWE1S

This device complies with part 15 of the FCC Rules. Operation is subject to the following two conditions: (1) This device may not cause harmful interference, and (2) this device must accept any interference received, including interference that may cause undesired operation.

Any Changes or modifications not expressly approved by the party responsible for compliance could void the user's authority to operate the equipment. Note: This equipment has been tested and found to comply with the limits for a Class B digital device, pursuant to part 15 of the FCC Rules. These limits are designed to provide reasonable protection against harmful interference in a residential installation. This equipment generates uses and can radiate radio frequency energy and, if not installed and used in accordance with the instructions, may cause harmful interference to radio communications. However, there is no guarantee that interference will not occur in a particular installation. If this equipment does cause harmful interference to radio or television reception, which can be determined by turning the equipment off and on, the user is encouraged to try to correct the interference by one or more of the following measures:

- Reorient or relocate the receiving antenna.
- Increase the separation between the equipment and receiver.
- Connect the equipment into an outlet on a circuit different from that to which the receiver is connected.
- Consult the dealer or an experienced radio/TV technician for help.

The distance between user and device should be no less than 20cm.

- If the appliance have the Wi-Fi function, the transmission power: less than 20dBm, and the radio frequency range is: 2412MHz – 2472MHz.
- The appliance is compliant with the RE Directive (2014/53/ EU).

Wi-Fi Module specification and basic information

Minimum specifications on a Smart phone: Android 5.0 version or higher

IOS 10.0 version or higher

Basic parameters for Wi-Fi:

Parameters Details

Network frequency 2.400 2.500GHz

Standards of WLAN IEEE 802.11 b/g/n(channels 1-14)



IOS



Android



SmartLife-SmartHome

Download and Install the App

Method1:

Please scan the QR code with a browser scanner, download and install the APP.



Method2:

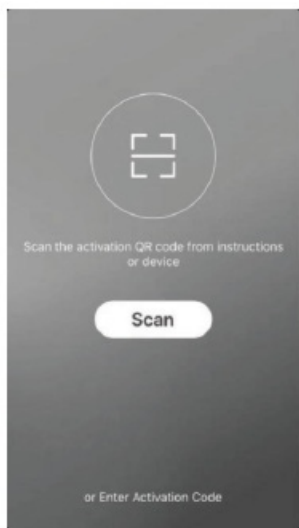
For Android smart phone, open the Google “Play Store” on your smart phone and search “SmartLife–SmartHome”, download and install the APP.

**Note:**

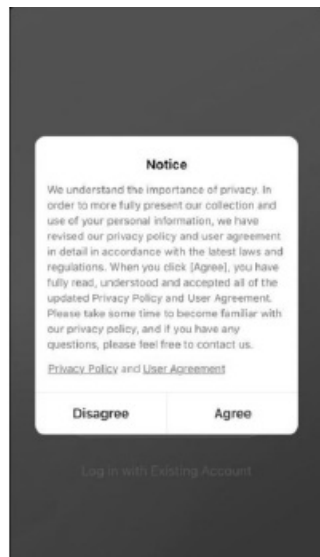
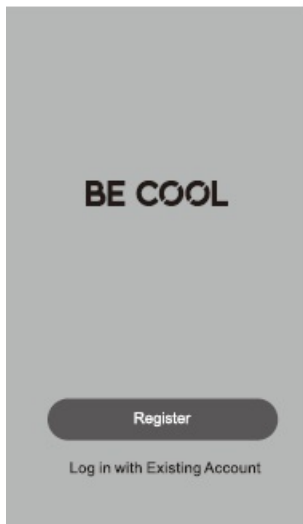
Please enable the permissions of Storage / Location / Camera / Wi-Fi / Bluetooth for this APP when installing. Otherwise it will have some problems when operating.

Active App

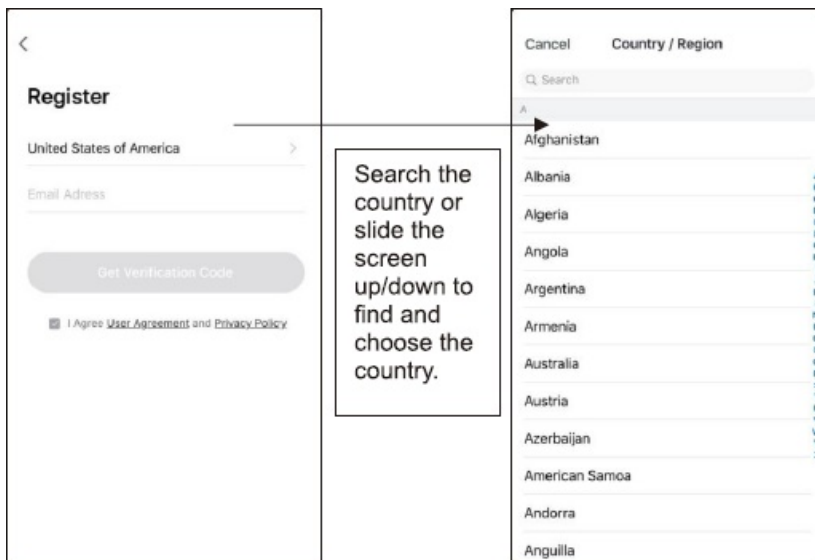
4. When you first time enter the APP, it will display activation interface, you can select activation QR code(click "Scan" button and scan the activation QR code in below page) or input "Activation code" words (in below page), click "Activate" button to active it..

**5. Activation QR code****3. Activation code words: BECOOL****Registration**

1. If you don't have any account please tap button "Register". 2.Read the "Privacy Policy" and tap "Agree".

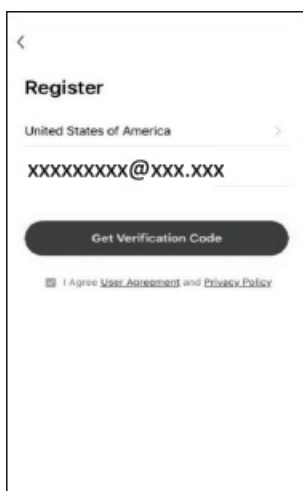


6. Tap “>” and choose the country.



Registration

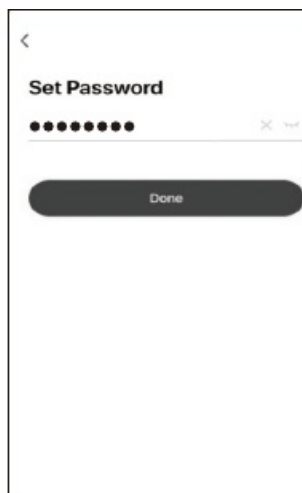
4. Enter your E-mail address.
5. Tap the button “Get Verification Code”.



6. Enter the verification code you received from E-mail.

7.Set the Password with 6-20 characters including characters and numbers.

8. Tap “Done”.

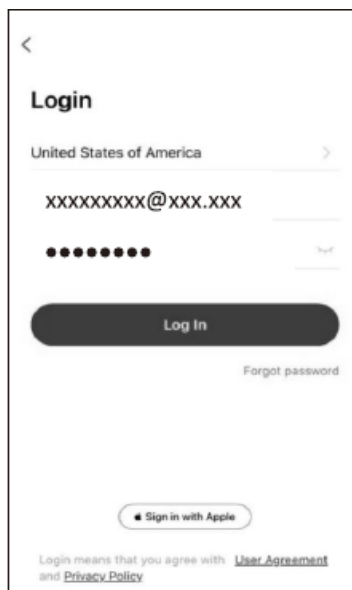


Log in

1.If you already have account, tap “Log in with Existing Account”.

2.Enter your registered account and password.

3. Tap “Log in” button.



Log in

Forgot the password

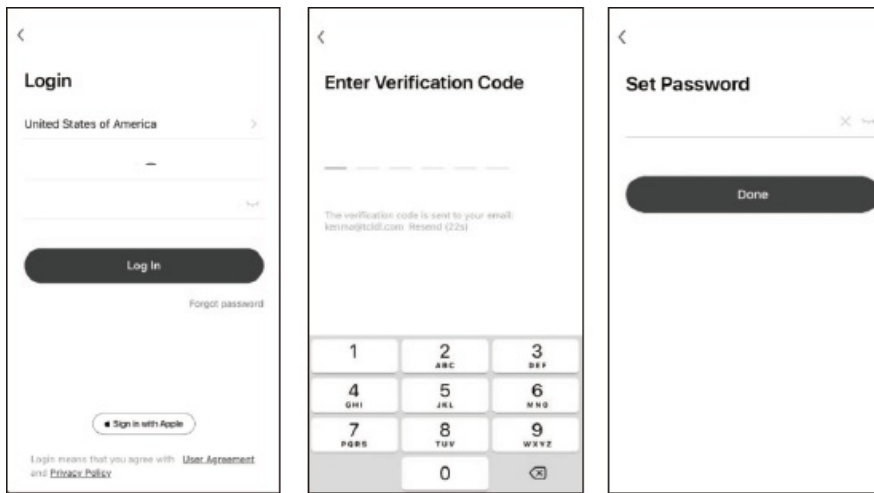
If you forgot the password or you want to reset the password , operate as below:

1.Tap “Forgot password”.

2.Enter your account(E-mail address) and tap button “Get verification code”.

3.Enter the verification code received by your E-mail.

4.Set the new password and tap button “Done”.



Add device

There are 2 methods to add the device.

Please power on the appliance, “**⏻**” button to turn but do not press the on it. And the screen show:

1- Switch on Wi-Fi function

1.1 Hold the “**FAN**” and “**—**” button about 5 seconds to switch on the Wi-Fi function.

1.2 The display screen will show the “**CF**”, and follow the CF mode to connect.

Note: For the BC9KL2201SSA+ \ BC9KL2202SSA+ \ BC12KL2201FWA+ \ BC14KL2201FW \ BC16KL2201FW \ BC12INKL2401FW model, no

need switch on Wi-Fi function, after plug into the mains socket, the display screen show “**CF**”, so can skip the step 1.1, connect Wi-Fi follow the guide below.

2-CF mode

2.4 Reset WiFi

There are three methods to reset the WIFI module

- A; Press the “**FAN**” button on the control panel 6 times within 4 seconds;
- B: Hold the “**ON/OFF**” button on the control panel about 5 seconds;
- C: Hold the “**Mode**” button on the control panel about 3 seconds.

Please wait about 10 seconds, until the LED screen show “**CF**”, and connect it again

Note: Applicable to BC9KL2201SSA+ \ BCSKL2202SSA+ \ BC12KL2201FWA+ \ BC14KL2201FW \ BC16KL2201FW \ BC12INKL2401FW models without B and C options.

2.2 Click “**+**” in the upper right corner of the “**Home**” screen or tap “**Add device**” on the room which has no device.

2.3 Tap the “Portable Air Conditioner” logo .

2.4 Input the password of the Wi-Fi which the same as your smart phone connected, then tap “Next”.

Note: Please make sure the “Password” is correct , or the connect will be failure.

2.6 You can see the percent rate of connecting process , at the same time “PP”, “SA”, “AP” shining in turn on the appliances display.

“PP” means “Searching the router”.

“SA” means “connected to the router”.

“AP” means “connected to the server”.

2.7 If connect Wi-Fi failure, please try to reset WIFI module and connect it again.

Note: Every time reset the Wi-Fi, must wait about 10 seconds, then the screen will display “CF” or “AP ” 5 times.

Note: There will be switch between “CF” and “AP” mode if reset the WIFI module.

Add device

3-AP mode

3.1 Reset Wi-Fi

There are three methods to reset the WIFI module.

A: Press the “FAN” button on the control panel 6 times within 4 seconds ;

B: Hold the “ON/OFF” button on the control panel about 5 seconds ;

C: Hold the “Mode” button on the control panel about 3 seconds.

Please wait about 10 seconds, until the LED screen show “AP”, and connect it again.

Note: Applicable to BC7KL\ BC9KL2201SSA+ \ BC9KL2202SSA+ \

BC12KL2201FWA+ \ BC14KL2201FW \ BC16KL2201FW \ BC12INKL2401FW models without B and C options.

Note: The original state of the newly bought unit is in CF mode. If you choose to use AP mode, please reset the Wi-Fi module and wait about 10 seconds until the LED screen show “AP“, then start to connect it.

3.2 Click (+) in the upper right corner of the “Home” screen or tap “Add device” on the room which has no device.

3.3 Tap the “Portable Air Conditioner” logo .

3.4 Input the password of the Wi-Fi which the same as your smart phone connected, then tap “Next”.

Note: Please make sure the “Password” is correct, or the connect will be failure.

3.5 Power on the appliances, no need to launch the appliances. Follow the comments on the next screen, Click

in the upper right corner and select the “AP Mode”,then check “Select circle to confirm the AP is blinking” and tap “Next”.

3.6 Select the device as name “Smartlife-XXXX” at the WLAN setting, then back to the APP interface, The APP will automatically do match.

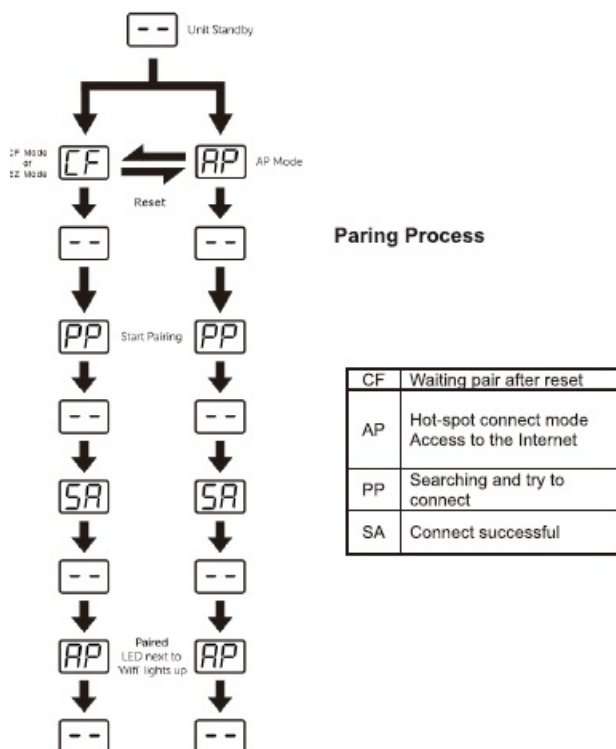
3.7 You can see the percent rate of connecting process, at the same time “PP“, “SA“, “AP” shining in turn on the appliances display.

“PP” means “Searching the router” “SA” means “connected to the router” “AP” means “connected to the server”

3.8 If connect Wi-Fi failure, please try to reset WIFI module and connect it again.

Note: Every time reset the Wi-Fi, must wait about 10 seconds, then the screen will display “CF” or “AP” 5 times.

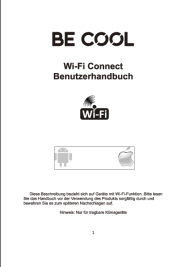
Note: There will be switch between “CF” and “AP” mode if reset the WIFI module.



Trouble Shooting

Description	Analysis of cause
Appliance can't be configured successfully	<p>Please enable the permissions of Storage / Location / Camera / Wi-Fi / Bluetooth for this APP when installing. Otherwise it will have some problems when operating.</p> <p>Check the mobile connected WLAN router SSID and password is correct;</p> <p>Check whether there are additional settings of WLAN router as shown below.</p> <p>Firewall by router itself or by PC</p> <p>MAC address filtering</p> <p>Hidden SSID</p> <p>DHCP server</p> <p>Reboot WLAN router, mobile device and appliance (WLAN module) and connect appliance by CF or AP mode again. Before rebooting, check nobody has already connected to same appliance.</p>
Mobile can't control appliance	<p>When appliance (WLAN module) is rebooted and app displays device remove, ignoring this confirmation will lead to mobile device losing control permission of the appliance. You will need to connect the appliance by CF or AP mode again.</p> <p>In case of power failure, mobile device will lose control permission of appliance for 3 minutes after power failure. (Notification will now show up on the mobile device.)</p> <p>If you cannot control the app (appliance) even after power restored, you will need to connect the appliance by CF or AP mode again.</p>
Mobile can't find appliance	<p>App display appliance Device offline. Please check the following conditions.</p> <p>The appliance has been reconfigured.</p> <p>Appliance out of power.</p> <p>Router out of power.</p> <p>Appliance can't connect to router.</p> <p>Appliance can't connect to network through the router.</p> <p>Mobile device can't connect to network.</p> <p>After adding the device, it disappears in device list .</p> <p>Hold and slide down to refresh the device list. If it has no change, shut down the app and start again.</p>

Documents / Resources

 <p>BE COOL Wi-Fi Connect Benutzerhandbuch</p> <p>WiFi</p> <p>These trademarks are registered with the United States Patent and Trademark Office. They are used here under license. All other trademarks are the property of their respective owners. © 2014 BE COOL. All rights reserved.</p>	<p>BE COOL WiFi Connect [pdf] User Manual</p> <p>WiFi Connect, WiFi, Connect</p>
---	--

References

- [User Manual](#)

Manuals+. [Privacy Policy](#)

This website is an independent publication and is neither affiliated with nor endorsed by any of the trademark owners. The "Bluetooth®" word mark and logos are registered trademarks owned by Bluetooth SIG, Inc. The "Wi-Fi®" word mark and logos are registered trademarks owned by the Wi-Fi Alliance. Any use of these marks on this website does not imply any affiliation with or endorsement.