

bDonix
K03 Keyboard



bDonix K03 Keyboard User Guide

[Home](#) » [bDonix](#) » bDonix K03 Keyboard User Guide 

Contents

- 1 bDonix K03 Keyboard
- 2 Product Information
- 3 Product Usage Instructions
- 4 Frequently Asked Questions (FAQ)
- 5 USING INSTRUCTION
- 6 The package includes
- 7 Basic Parameters
- 8 FCC Warning
- 9 Warranty term
- 10 Compensation
- 11 Documents / Resources
 - 11.1 References
- 12 Related Posts

bDonix
Personalized Digital Life

bDonix K03 Keyboard



Product Information

Specifications:

- **Model:** K03
- **Package Includes:** Wireless Keyboard, Mouse, Mini Receiver, Quick Start Guide
- **Frequency Range:** 2.405GHz – 2.475GHz
- **Operating Distance:** 8-10m
- **Power Consumption:** 5mA
- **Dimensions:** 404.4 x 135 x 34.6mm

Product Usage Instructions

1. Battery Installation:

1. Open the battery cover of the keyboard or mouse.
2. Insert the battery, ensuring the positive and negative terminals are correctly oriented.

2. Receiver Installation:

1. Remove the receiver (or connector) from the package.
2. Insert the receiver into a USB port on your computer.

Frequently Asked Questions (FAQ)

- **What is the operating frequency range of the wireless keyboard and mouse?**

The operating frequency range is between 2.405GHz and 2.475GHz.

- **How far is the effective operating distance of the wireless keyboard and mouse?**

The effective operating distance is between 8-10 meters.

- **How do I check if the battery is inserted correctly?**

Make sure that the positive and negative terminals of the battery align with the corresponding markings inside the battery compartment.

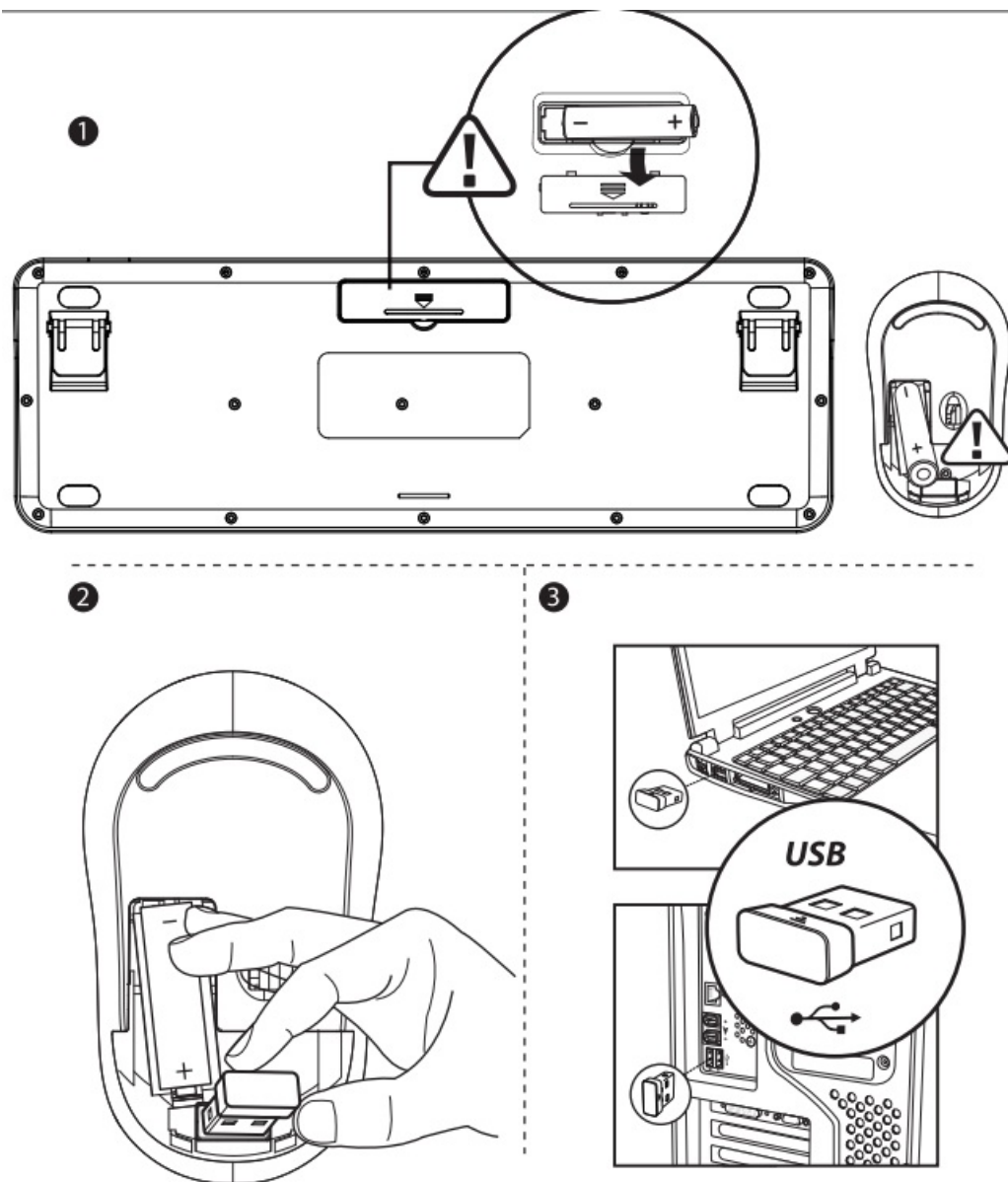
- **What is the power consumption of the wireless keyboard and mouse?**

The power consumption is approximately 5mA.

- **Is there a conformity certificate included in the package?**

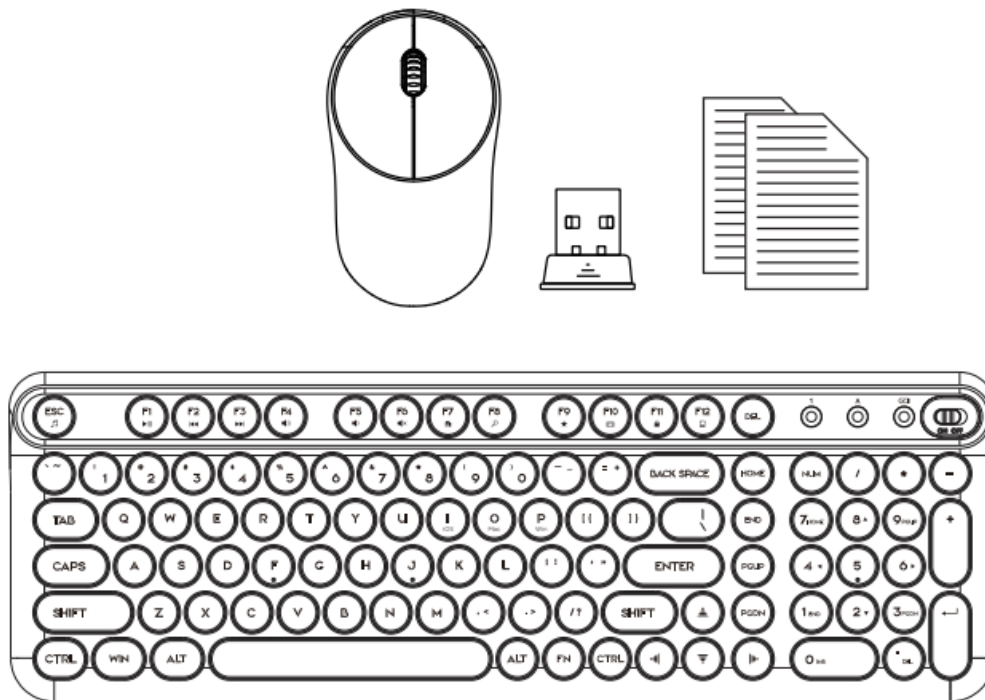
Yes, a conformity certificate is included with the product.

USING INSTRUCTION



1. Open the battery cover and insert the battery, ensuring the positive and negative terminals are oriented correctly.
2. Remove the receiver(or connector).
3. Insert it into the USB port on your computer

The package includes



- Wireless Keyboard and Mouse
- Mini receiver
- Quick start guide

Basic Parameters

- **Mouse basic parameters:**
 - **Wireless data transmission:** 2Mbps
 - **Frequency:** 2403MHZ-2479MHZ
 - **Channel:** 16
 - **Engine:** no light
 - **Distance:** 20m
 - **Working voltage:** 1.5V
 - **Working current:** 11mA
 - **Mouse button life:** more than 3 million
 - **Mouse size:** 106x62x40mm
- **Mouse tracking performance:**
 - **Mouse resolution:** 1500DPI
 - **Mouse return rate:** 500Hz
- **Keyboard basic parameters:**
 - **Frequency:** 2.405G~2.475GHZ
 - **Channel:** 8
 - **Distance:** 8-10m
 - **Working voltage:** 2.2 – 3.2V
 - **Working current:** 5mA
 - **Keyboard button life:** More than 8 million
 - **Keyboard size:** 404.4x135x34.6mm

- **System requirements**

System combination

- IBM or compatible calculator
- **Windows:** 2000/XP(X64)/Vista/7/8/10
- Mac OS X(More than V10.4)
- A workable USB interface

- **Mouse step operating current:**

- **Working current** = 11mA
- **Standby current** = 1.3mA
- **Sleep current** = 50uA
- **No reception status** <30uA

FCC Warning

This device complies with Part 15 of the FCC Rules. Operation is subject to the following two conditions:

1. this device may not cause harmful interference
2. this device must accept any interference received, including interference that may cause undesired operation.

Changes or modifications not expressly approved by the party responsible for compliance could void the user's authority to operate the equipment.

NOTE: This equipment has been tested and found to comply with the limits for a Class B digital device, pursuant to Part 15 of the FCC Rules. These limits are designed to provide reasonable protection against harmful interference in a residential installation. This equipment generates, uses and can radiate radio frequency energy and, if not installed and used in accordance with the instructions, may cause harmful interference to radio communications. However, there is no guarantee that interference will not occur in a particular installation. If this equipment does cause harmful interference to radio or television reception which can be determined by turning the equipment off and on, the user is encouraged to try to correct the interference by one or more of the following measures:

- Reorient or relocate the receiving antenna.
- Increase the separation between the equipment and receiver
- Connect the equipment into an outlet on a circuit different from that to which the receiver is connected.
- Consult the dealer or an experienced radio/TV technician for help

NOTE: This device and its antenna(s) must not be co-located or operation in conjunction with any other antenna or transmitter

The device has been evaluated to meet general RF exposure requirement. The device can be used in portable exposure condition without restriction.

Warranty term

The equipment is provided with a limited product hardware warranty service for 1 year from the date of purchase.

Security reminder

Please do not open or repair the equipment. Please do not use the equipment in a wet environment. Please wipe the equipment using the dry cloth.

Warranty restrictions

The limited warranty doesn't cover the problems or damages due to the following causes:


1. Accidents, misuse, improper operation, or any unauthorized maintenance, modification or dismantling;
2. Improper operation or maintenance, violation of the product description during the application or improper connection of voltage source;

Compensation

1. In case of quality problems within 7 days, according to the "three guarantees" stipulated by the country, the hardware will be returned to the purchase place under the intact appearance and packaging of the product, and the payment for the bought hardware will be returned when presenting the valid voucher for purchase.
2. In case of quality problems within 60 days, the hardware product can be replaced at the purchase place or repaired at the specified repairing block, and the expiration date of the replaced hardware is the remaining days.
3. In case of quality problems within 1 year, the product can be repaired at the specified repairing block.

warranty period		date	Maintenance situation
Date of purchase			
Where to buy			
Product Serial Number			
Product Number			
stamp			

Documents / Resources

	bDonix K03 Keyboard [pdf] User Guide K03, 2BEPS-K03, 2BEPSK03, K03 Keyboard, Keyboard
---	--

References

- [User Manual](#)

[Manuals+](#), [Privacy Policy](#)

This website is an independent publication and is neither affiliated with nor endorsed by any of the trademark owners. The "Bluetooth®" word mark and logos are registered trademarks owned by Bluetooth SIG, Inc. The "Wi-Fi®" word mark and logos are registered trademarks owned by the Wi-Fi Alliance. Any use of these marks on this website does not imply any affiliation with or endorsement.