

BDI LINQ 5 Drawer Chest



BDI LINQ 5 Drawer Chest Instruction Manual

[Home](#) » [BDi](#) » BDI LINQ 5 Drawer Chest Instruction Manual 

Contents

- [1 BDI LINQ 5 Drawer Chest](#)
- [2 Product Usage Instructions](#)
- [3 HARDWARE AND COMPONENTS](#)
- [4 ASSEMBLY](#)
- [5 FINE-TUNING](#)
- [6 CARE & MAINTENANCE](#)
- [7 WARRANTY](#)
- [8 PRODUCT REGISTRATION](#)
- [9 Documents / Resources](#)
 - [9.1 References](#)



BDI LINQ 5 Drawer Chest



Specifications

- Product Name: LINQ 9185 Chest
- Designer: Matthew Weatherly
- Assembly: Simple assembly required
- Tools Required (Not Included): Phillips Screwdriver
- Hardware Included: Hex Wrench, Leveler Wrench, Screws (H1-H5), Thumb Screw
- Hardware Required (Not Included): Drywall Anchor, Drywall Screw

Product Usage Instructions

Step 1: Assemble Base

Lay the Spanners (C1) on a soft, non-marring surface. Attach the Legs (C2) to the Spanners (C1) using 8 Screws (H1) and Hex Wrench (T1). Do not fully tighten the screws yet.

Step 2: Attach Base to Cabinet

With help from another person, position the Cabinet (C3) onto a layer of honeycomb packing material. Attach the Base with 6 Screws (H2). Tighten the screws with Hex Wrench (T1).

Step 3: Attach Drawer Pulls

Turn the Chest onto its feet. Open each drawer, cut off the ribbon, and install the 5 Drawer Pulls (C4) using 10 Screws (H3). Use a Phillips Screwdriver to tighten the screws.

Step 4: Install KLEETS

Attach the KLEET (C5) to the back of the Cabinet with 2 Wood Screws (H4). Tighten using a Phillips Screwdriver.

FAQ

- **Q: What should I do if I am missing hardware pieces?**

A: For missing hardware pieces, please contact BDI Customer Service at customerservice@bdiusa.com.

- **Q: Can I use power tools for assembly?**

A: Do not use power tools for the assembly of this product to prevent any damage.

Congratulations on the purchase of your LINQ Chest 9185 from BDI. Your chest has been designed to provide a lifetime of enjoyment. This manual will provide assembly instructions and other helpful information to ensure you get the most out of your product. Please save it for future reference.

Your LINQ Chest has been engineered for simple assembly. Please follow these directions carefully to prevent any damage.

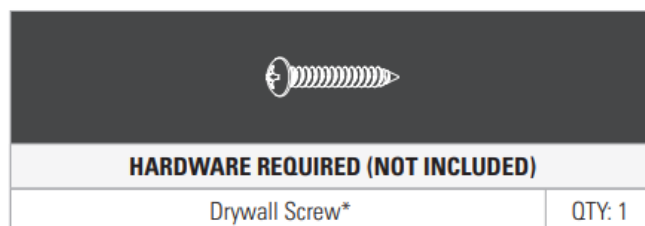
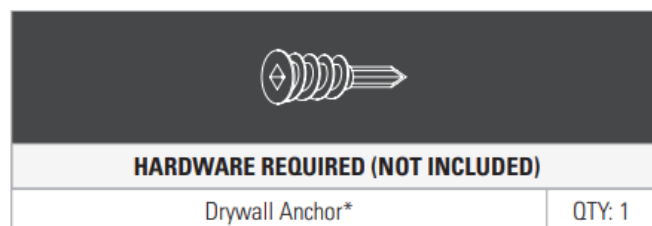
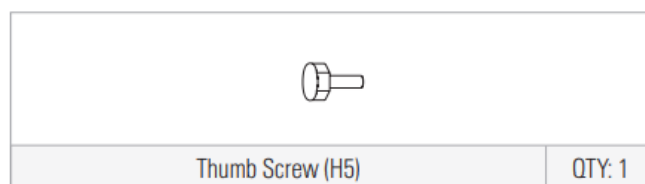
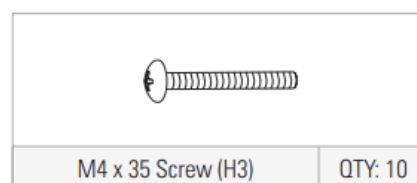
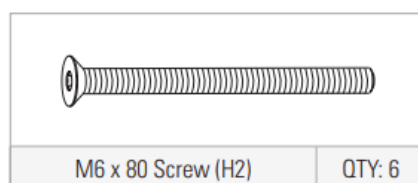
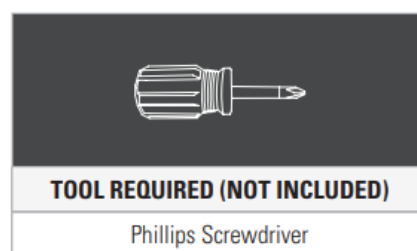
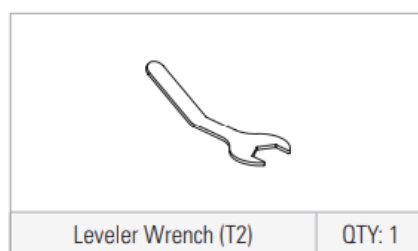
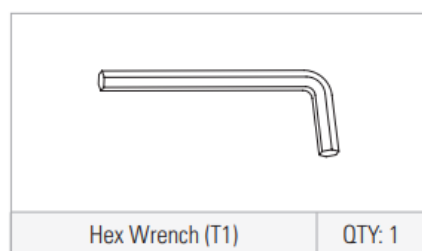
Should you need further assistance, contact BDI at customerservice@bdiusa.com.

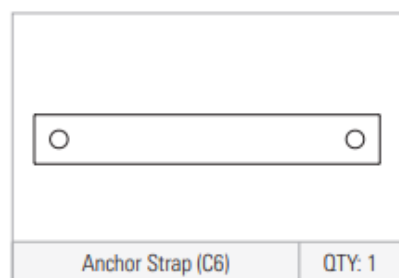
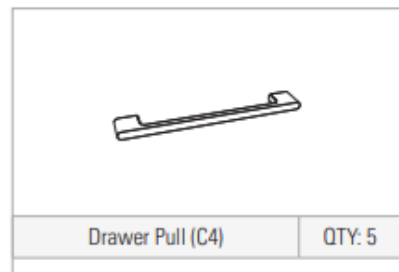
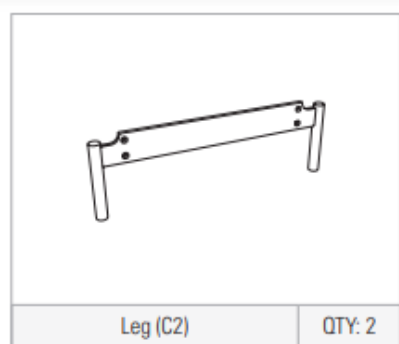
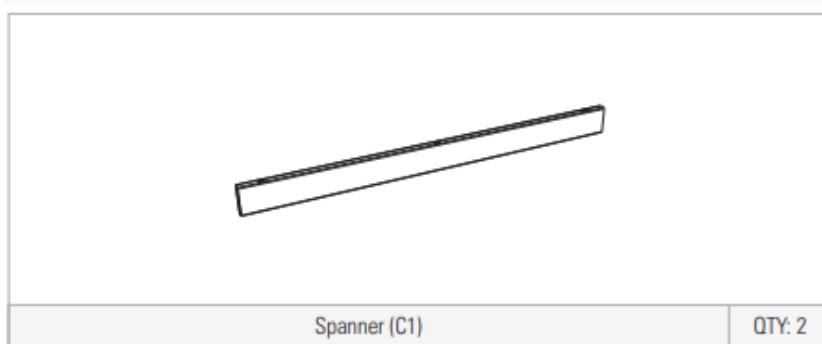
ENJOY!

HARDWARE AND COMPONENTS

Unpack and identify the parts listed below. The assembly workspace should be a non-marring surface, such as carpet. For missing hardware pieces, please contact BDI Customer Service at customerservice@bdiusa.com. For all other concerns, please contact your BDI retailer.

Do not use power tools for the assembly of this product.



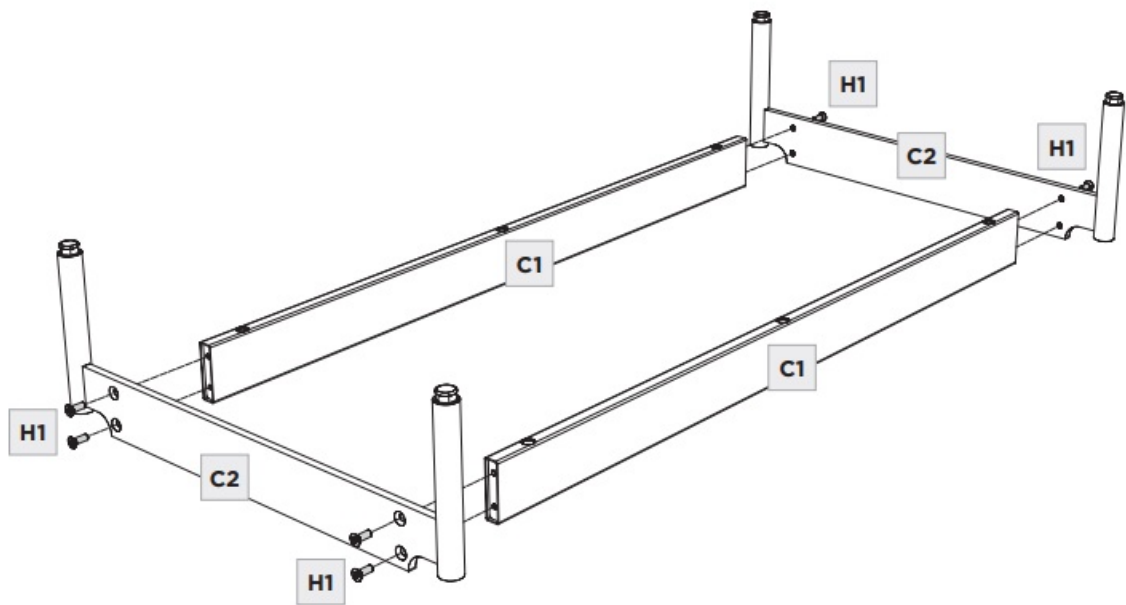


ASSEMBLY

• STEP 1. ASSEMBLE BASE

Lay the Spanners (C1) on a soft, non-marring surface, like carpet. Attach the Legs (C2) to the Spanners (C1) using 8 Screws (H1) and Hex Wrench (T1). DO NOT fully tighten the screws yet.

	HEX WRENCH – T1	QTY 1
	SCREW – H1	QTY 8



• STEP 2. ATTACH BASE TO CABINET

With help from another person, carefully position the Cabinet (C3) onto a layer of honeycomb packing material and orient it on its back as shown.

Position the Base as shown and attach with 6 Screws (H2). With all screws started, tighten with Hex Wrench (T1).

NOTE: The packing material creates finger space to lift the cabinet after attaching the base.

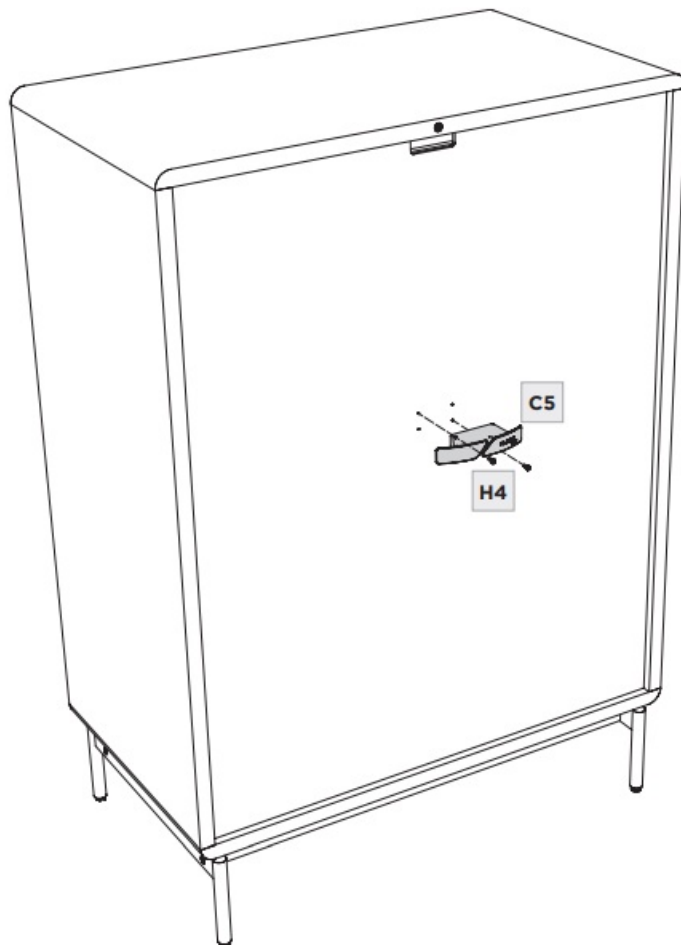
	NOT INCLUDED PHILLIPS SCREWDRIVER	QTY 1
	SCREW – H3	QTY 10



• STEP 4. INSTALL KLEETS

Install the KLEET (C5) to the back of the Cabinet using 2 Wood Screws (H4). Tighten with Phillips Head Screwdriver (not included).

	NOT INCLUDED PHILLIPS SCREWDRIVER	QTY 1
	SCREW – H4	QTY 2






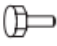
• STEP 5. INSTALL ANCHOR STRAP & SECURE CABINET

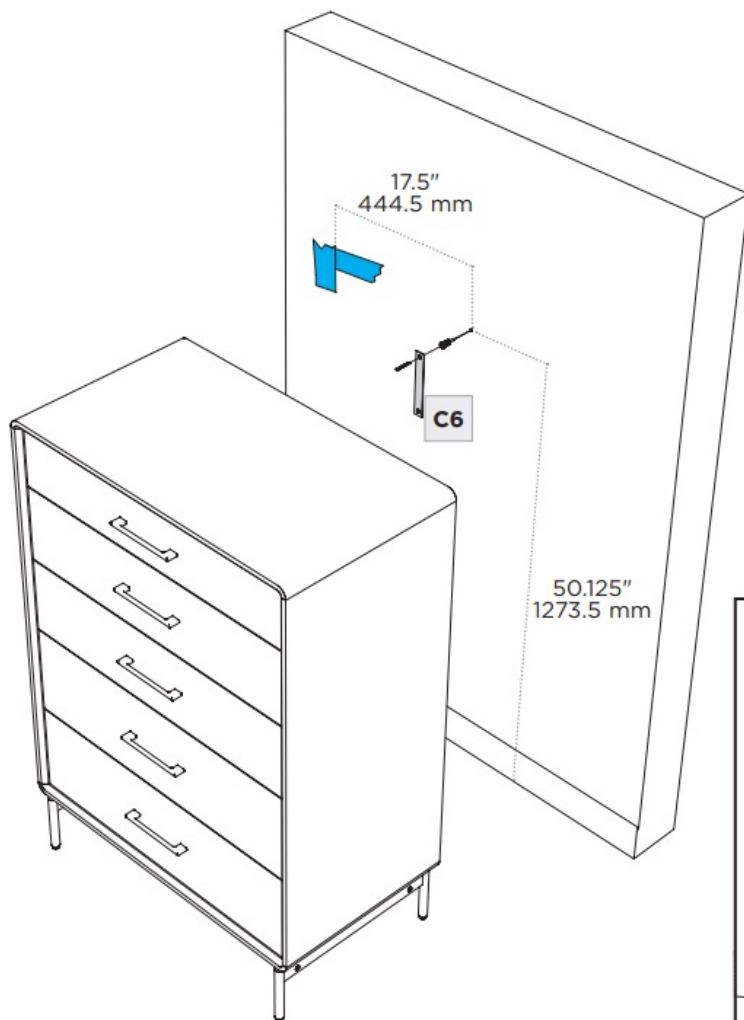
With help from another person, carefully walk the cabinet into the desired position against the wall.

It is strongly recommended that you anchor your LINQ Dresser to the wall using the provided Anchor Strap (C6). Use painter's tape to mark the upper left corner of the unit, as shown.

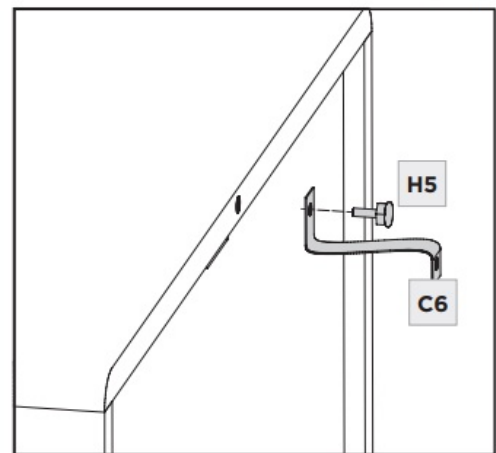
With help from another person, carefully move the cabinet away from the wall. Measure and mark the wall as shown.

Attach one end of the Anchor Strap (C6) to the wall at the marked location with an appropriate wall anchor and screw (not included).

	NOT INCLUDED PHILLIPS SCREWDRIVER	QTY 1
	NOT INCLUDED WALL ANCHOR	QTY 1
	NOT INCLUDED SCREW	QTY 1
	THUMB SCREW – H5	QTY 1



Carefully move your Chest close to the wall and attach the loose end of the **Anchor Strap (C6)** to the back edge of the top panel with the **Thumb Screw (H5)**.

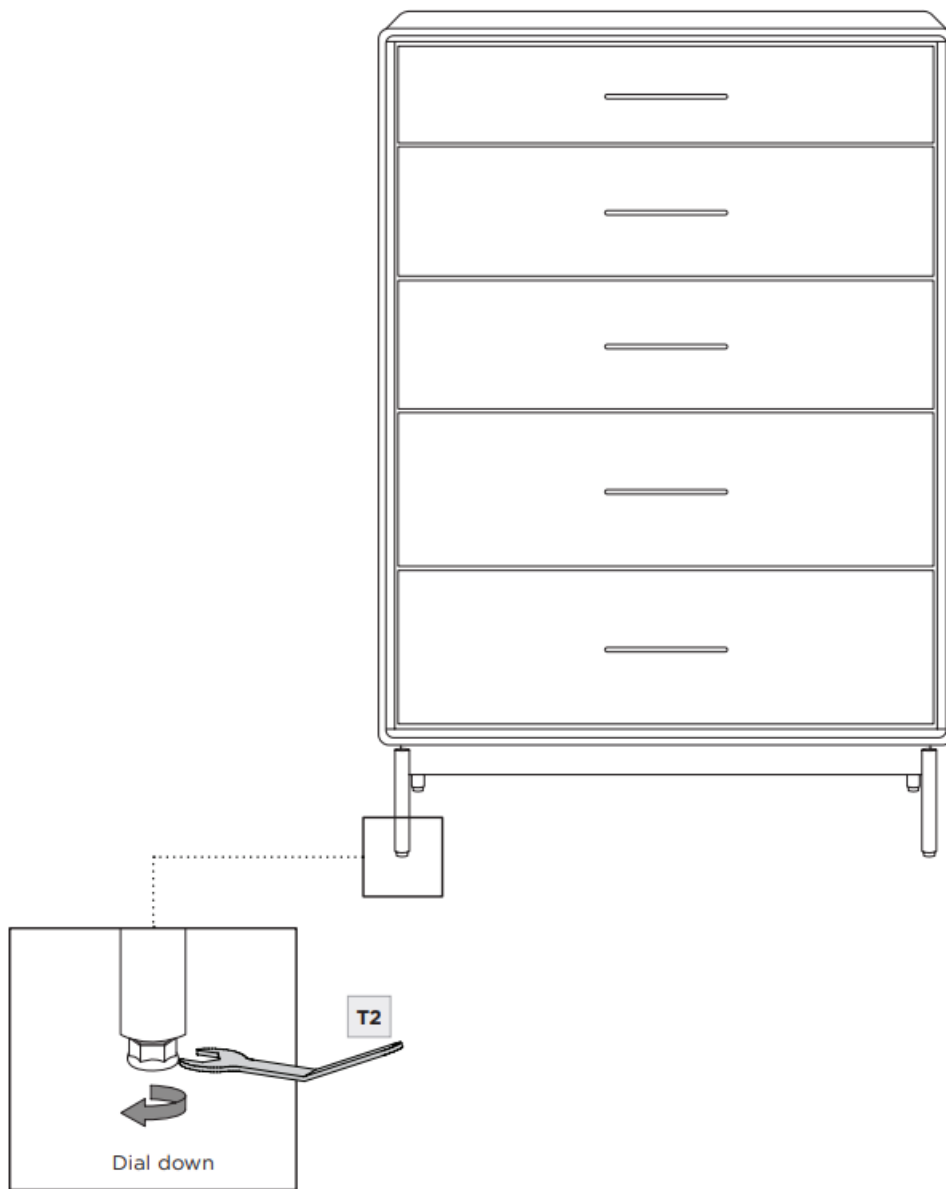


FINE-TUNING

LEVEL CHEST

Once the unit is completely assembled and in its final position, adjust the levelers using Leveler Wrench (T2). Using a level (not provided), level your cabinet first side to side and then front to back. If your cabinet is on carpeting, check your front to back level after loading the cabinet and opening the heaviest drawers. This will ensure the cabinet remains level during operation and reduce the risk of tip-over.

	PART/DESCRIPTION	QTY
	LEVELER WRENCH – T2	1



CARE & MAINTENANCE

Your BDI furniture has been constructed with the finest materials, carefully manufactured, and designed to last a lifetime. Regular furniture care will prolong your enjoyment and keep it looking its best. Here are some general tips for taking care of BDI furniture. Your surfaces may vary.

- **GLASS**

Glass surfaces are maintained using household glass cleaner and a paper towel or cloth.

- **SATIN-ETCHED GLASS**

This uniquely smooth-to-the-touch glass surface can be regularly maintained using household glass cleaner and a paper towel or cloth.

A 'Magic Eraser' removes minor scratches or scuffs not eliminated using a paper towel or cloth. 'Magic Eraser' is a melamine foam product available at any grocery store or home improvement center. Dampen the entire glass surface and the Magic Eraser, then rub the whole surface in broad, even strokes using moderate pressure. Clean and dry the surface with a paper towel. Check for results and repeat as necessary. Any scratches or scuffing not eliminated by one of the above methods can often be addressed by 'refreshing' the glass. This process should not be required more than once per 6–12 months. See this brief video for the simple method: www.bdiusa.com/glass

• WOOD

Wood surfaces should be cleaned with a slightly damp (not saturated) cloth or paper towel. Do not use glass cleaner on wood. If moisture remains, dry the surface with another cloth. If needed, a gentle, non-abrasive cleanser may be used, but wipe away all cleaner residue and dry the surface with a cloth.

BDI's wood finishes feature natural hardwood solids and veneers. Wood is a product of nature and—unlike man-made materials that can be manufactured to strict and consistent specifications—has natural imperfections that are part of its appeal and character. Every piece of wood differs from every other, even when coming from the very same tree. As such, grain, texture, and tone variation should be expected from one panel or piece of furniture to the next.

While BDI's stained wood finishes are stable in tone & appearance, all finishes are subject to some degree of discoloration with prolonged exposure to direct sunlight. Please avoid positioning your BDI cabinet in any area with ample direct sunlight. To learn more about the features of natural wood, visit www.bdiusa.com/wood

• METAL, PORCELAIN, & PAINTED SURFACES

Surfaces should be cleaned with a slightly damp (not saturated) cloth or paper towel. If moisture remains, dry the surface with another cloth. If needed, a gentle, non-abrasive cleanser may be used, but be sure to wipe away all cleaner residue and dry the surface with a cloth.

WARRANTY

- BDI warrants to the original purchaser that for the below-stated warranty term, BDI will repair or replace any product, part, or component covered by this warranty that fails under everyday use due to a defect in material or workmanship. BDI will repair or replace the product mentioned above, part, or component with a comparable product, part, or component. The decision to repair or replace will be at BDI's sole discretion.
- BDI furniture is warranted for three (3) years from the date of purchase, as shown on your sales receipt. The warranty period starts from the date of purchase. This warranty extends only to the original purchasers who acquire new products from BDI Authorized Resellers. To be eligible for warranty coverage, any product, part, or component must have been assembled, installed, used, and maintained according to BDI's published instructions. Any modification to the original product voids the warranty.
- To view BDI's complete warranty information, visit www.bdiusa.com/warranty


PRODUCT REGISTRATION

Registering your new BDI product allows us to send you important product updates, service information, and helpful hints related to your BDI products. Register today, and you will be entered to win free a BINK table from BDI: www.bdiusa.com/register

These distinctive product configurations are protected by US and international patents, trade dress, and/or copyright laws. LINQ & BDI are trademarks of Becker Designed, Inc. All rights reserved. ©2023, BDI |

V.06.22.2023

Made in Vietnam.

	<p>BDI LINQ 5 Drawer Chest [pdf] Instruction Manual LINQ 5 Drawer Chest, LINQ 5, Drawer Chest, Chest</p>
---	--

References

- [BDI BDI Furniture | Designed for Modern Living](#)
- [BDI Caring for BDI's Satin-Etched Glass | BDI Furniture](#)
- [BDI Register Your BDI Product | BDI Furniture](#)
- [BDI Limited Warranty | BDI Furniture](#)
- [BDI The Distinction, Diversity and Durability of Natural Wood | BDI Furniture](#)
- [User Manual](#)

[Manuals+](#), [Privacy Policy](#)

This website is an independent publication and is neither affiliated with nor endorsed by any of the trademark owners. The "Bluetooth®" word mark and logos are registered trademarks owned by Bluetooth SIG, Inc. The "Wi-Fi®" word mark and logos are registered trademarks owned by the Wi-Fi Alliance. Any use of these marks on this website does not imply any affiliation with or endorsement.