



## bbpos POS Go Card Reader Device User Guide

[Home](#) » [bbpos](#) » bbpos POS Go Card Reader Device User Guide 

### Contents

- [1 bbpos POS Go Card Reader Device](#)
- [2 Get started with POS Go](#)
- [3 Using the barcode scanner](#)
- [4 Accepting a tap payment](#)
- [5 Accepting a swipe payment](#)
- [6 Accepting a chip payment](#)
- [7 Charge your POS Go](#)
- [8 Use POS Go for customers](#)
- [9 Documents / Resources](#)
- [10 Related Posts](#)



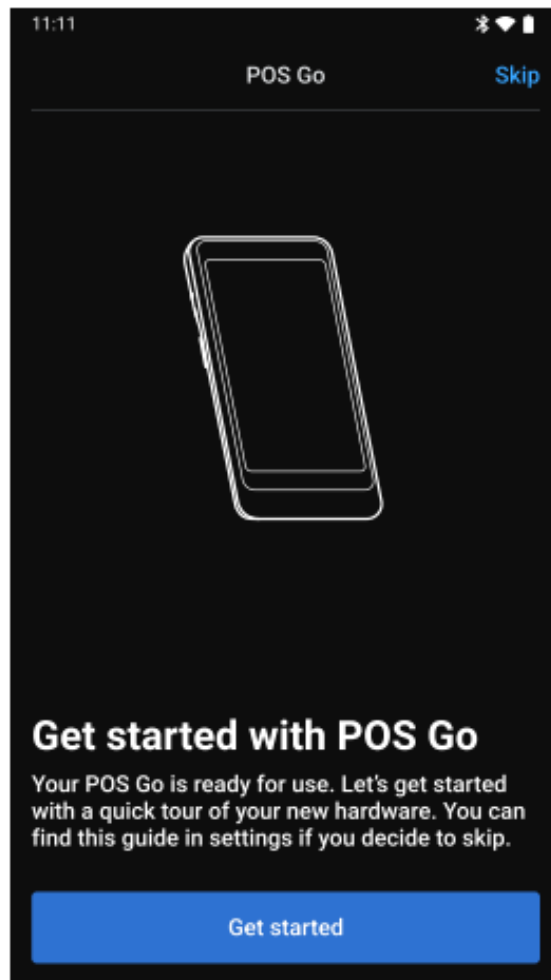
**bbpos POS Go Card Reader Device**



**Please note:** These are designs are not final and are subject to change.

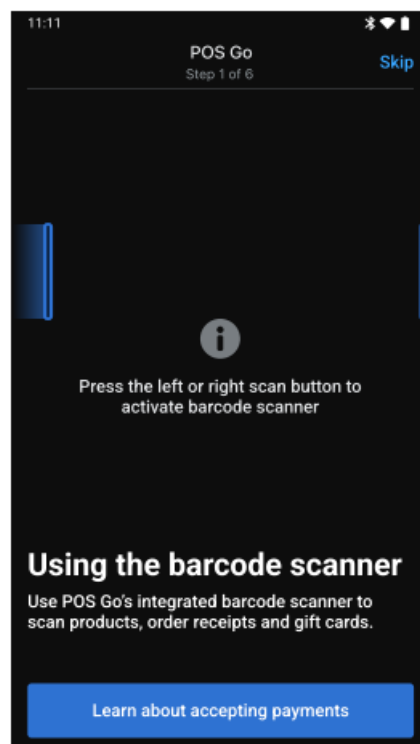
### **Get started with POS Go**

Your POS Go is ready for use. Let's get started with a quick tour of your new hardware. You can find this guide in settings if you decide to skip.



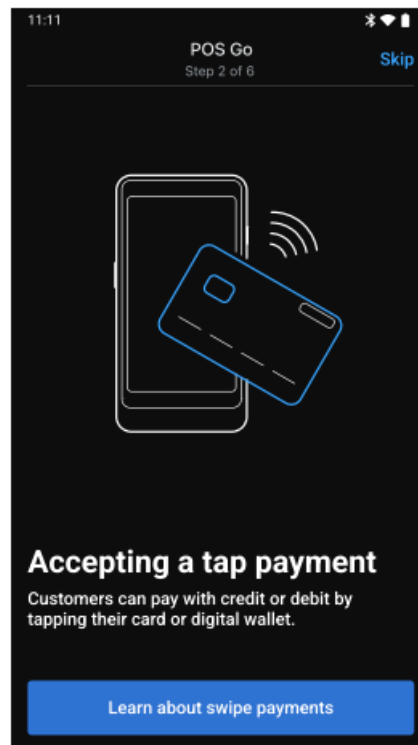
## Using the barcode scanner

Use POS Go's integrated barcode scanner to scan products, order receipts and gift cards.



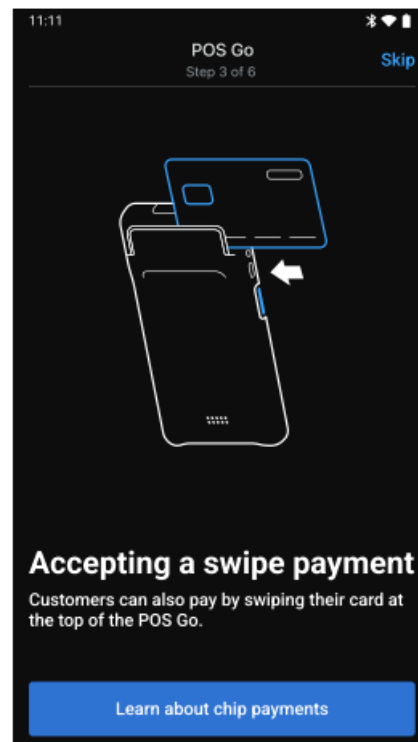
## Accepting a tap payment

Customers can pay with credit or debit by tapping their card or digital wallet.



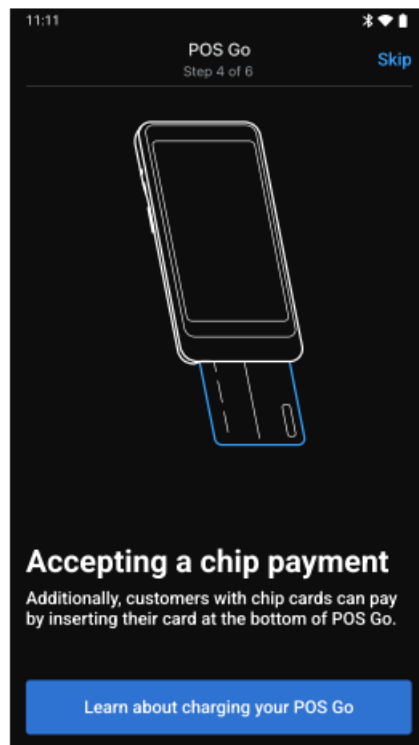
## Accepting a swipe payment

Customers can also pay by swiping their card at the top of the POS Go.



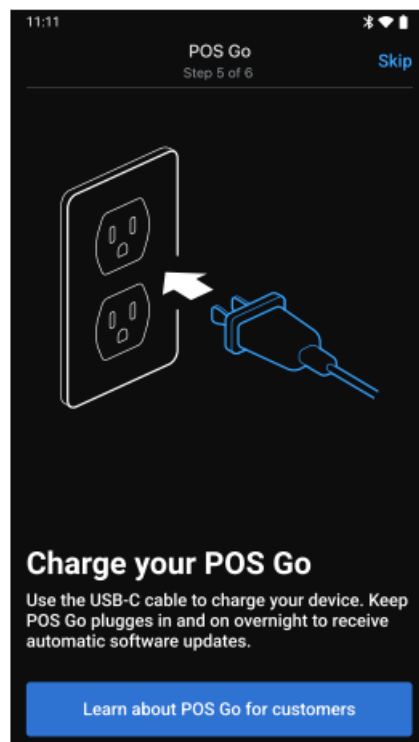
## Accepting a chip payment

Additionally, customers with chip cards can pay by inserting their card at the bottom of POS Go.



## Charge your POS Go

Use the USB-C cable to charge your device. Keep POS Go plugged in and on overnight to receive automatic software updates.




## Use POS Go for customers

POS Go can be used as a customer facing display during a checkout. Enable customer view in settings or automatically with the POS Go Dock.



Documents / Resources

	<p><a href="#">bbpos POS Go Card Reader Device</a> [pdf] User Guide S2001, 2AB7X-S2001, 2AB7XS2001, POS Go Card Reader Device, POS Go, Card Reader Device</p>
--	---