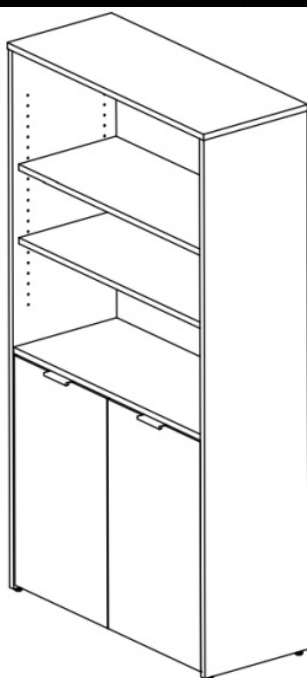




[Home](#) » [bbf](#) » **bbf A191893B 5 Shelf Bookcase Installation Guide** 



Assembly Guide



Contents [[hide](#)]

1 A191893B 5 Shelf Bookcase

2 Get Ready to Assemble

2.1 IMPORTANT SAFETY INFORMATION

2.2 Get to know your Fasteners

2.3 Get to know your Hardware

2.4 PARTS LIST

3 Documents / Resources

3.1 References

A191893B 5 Shelf Bookcase

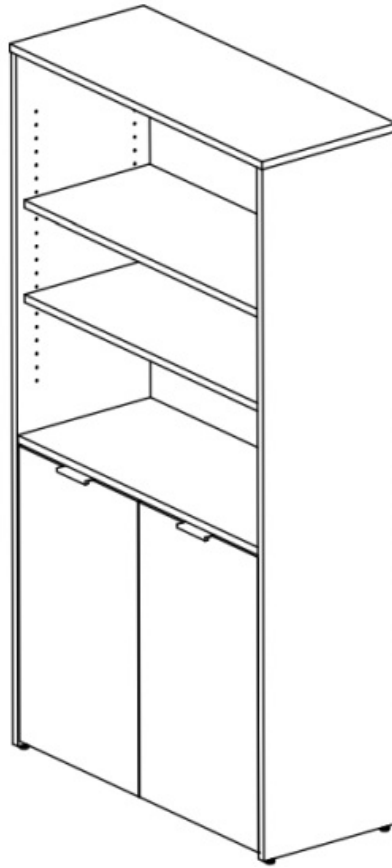


If you're having any difficulty during assembly of this product, don't hesitate to call us at 1-[800-950-4782](tel:800-950-4782).

Our customer service experts are trained to provide step-by-step instruction and can easily replace any missing or damaged parts.

Representatives are available Monday-Friday from 8:30 a.m. to 7:30 p.m. (ET)

5 Shelf Bookcase







Get Ready to Assemble

For best results, keep these tips in mind:




1. We know you want to finish this assembly as quickly as possible, but trust us: you'll have a better experience if you take it one step at a time.
2. Give yourself some room to work near where you want the fully assembled product.
3. If your floor isn't carpeted, assemble this product on the empty carton to avoid scratching.
4. Do you have a friend who owes you a favor? Some steps may go a little easier with a second set of hands.

DOS

	Use a #2 Phillips head screwdriver (or other handheld tools as indicated)
	Wear safety glasses at all times during assembly

	Carefully follow the instructions in this guide and complete all steps in order
	Give us a call if you're having trouble with a particularly tricky step

DON'Ts

	We know power tools are quick and easy, but you shouldn't use them when assembling this product (unless otherwise specified)
	Never move your furniture with items inside or resting on the surface
	Do not attempt to use this product before all steps have been completed



Watch assembly videos right on your phone or computer!

Some steps include QR codes that link to helpful videos. Watch out for the icon below! Simply open up your smartphone camera to scan the code.



(Users of older smartphones may need to install a QR Reader.)

SCAN HERE



<https://www.youtube.com/playlist?list=PL3IP1CwWzcfb2TkasUyqdp4rIPxKBdfQA>

FOR VIDEOS

Or visit <https://bushfurniture.com/help-faq/#assembling>

IMPORTANT SAFETY INFORMATION

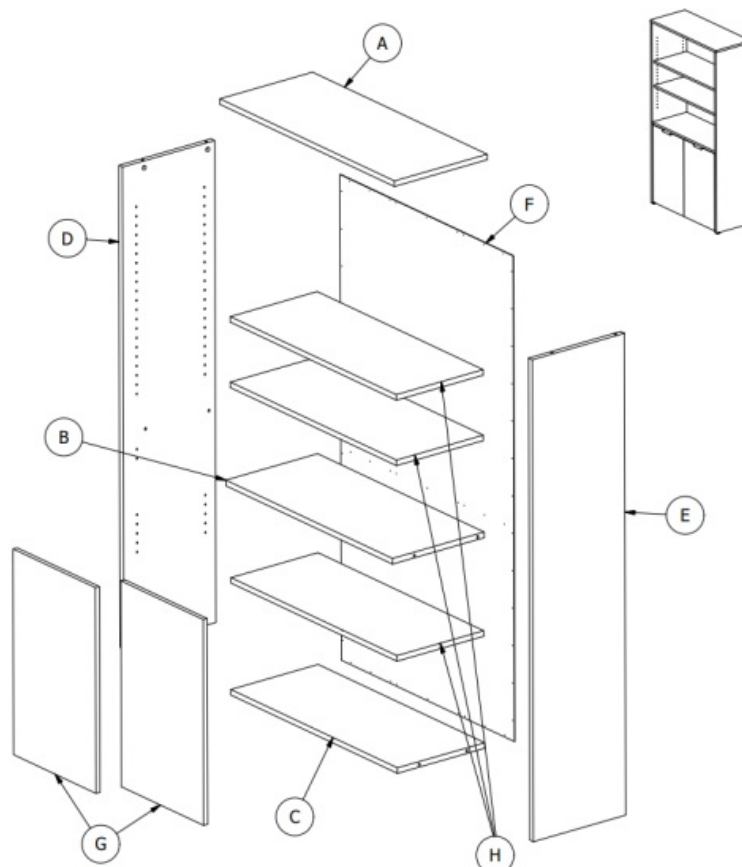
PLEASE READ WARNINGS

Improper use can cause safety hazards, or damage to your furniture and household items.

Warning	Do	Don't	Why it's important
---------	----	-------	--------------------

<p>Serious injury may occur.</p>	<ul style="list-style-type: none"> • Assemble following all instructions using all indicated parts and hardware provided. • Install tip-over restraint provided. • Install every indicated nail and/or screw. • Verify furniture is stable on its own. • Place heaviest items in the lower drawers. • Remove items that might tempt kids to climb, such as toys and remote controls from the top and upper shelves of furniture. 	<ul style="list-style-type: none"> • Do not move unit when loaded. • Do not load with a television or other heavy equipment. • Do not exceed the maximum load limits stated in the instructions. • Do not allow children to stand, climb, or hang on furniture. 	<p>Improper assembly, use or loading can lead to product instability, tipover, or collapse.</p>
----------------------------------	--	---	---

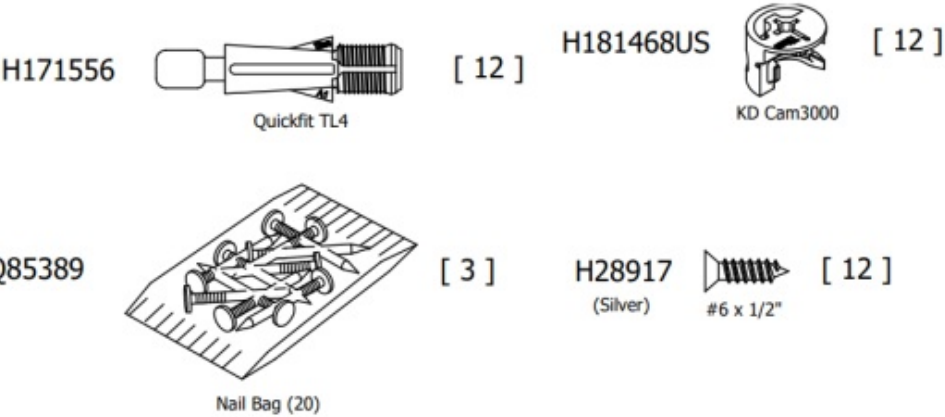
Get to know your Boards



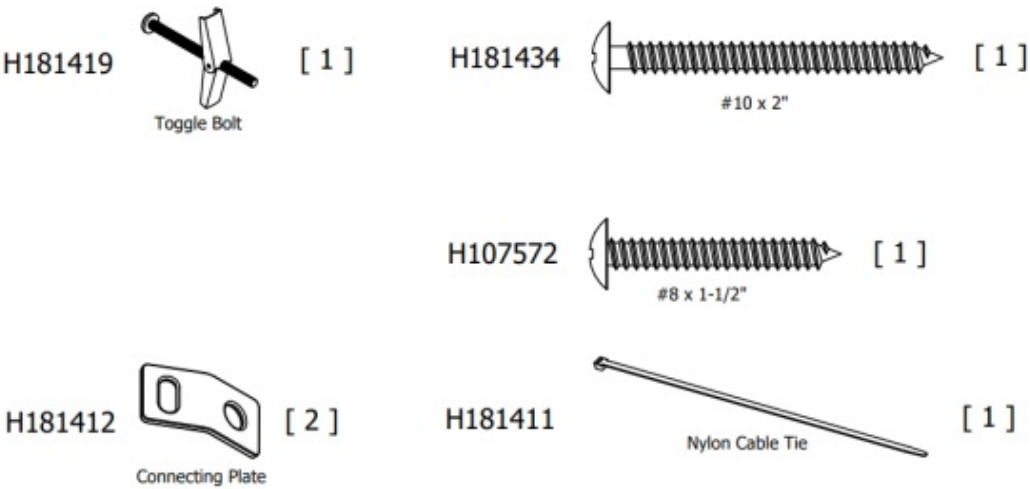
Have an assembly question or need a replacement part? Just call 1-[800-950-4782](tel:800-950-4782), we are here to help.

Get to know your Fasteners

Fasteners are shown actual size.

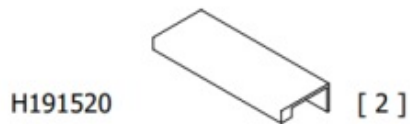
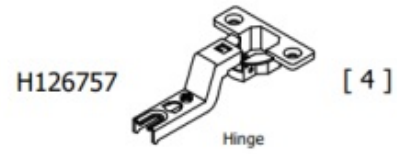
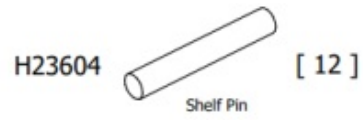


TIPOVER RESTRAINT HARDWARE

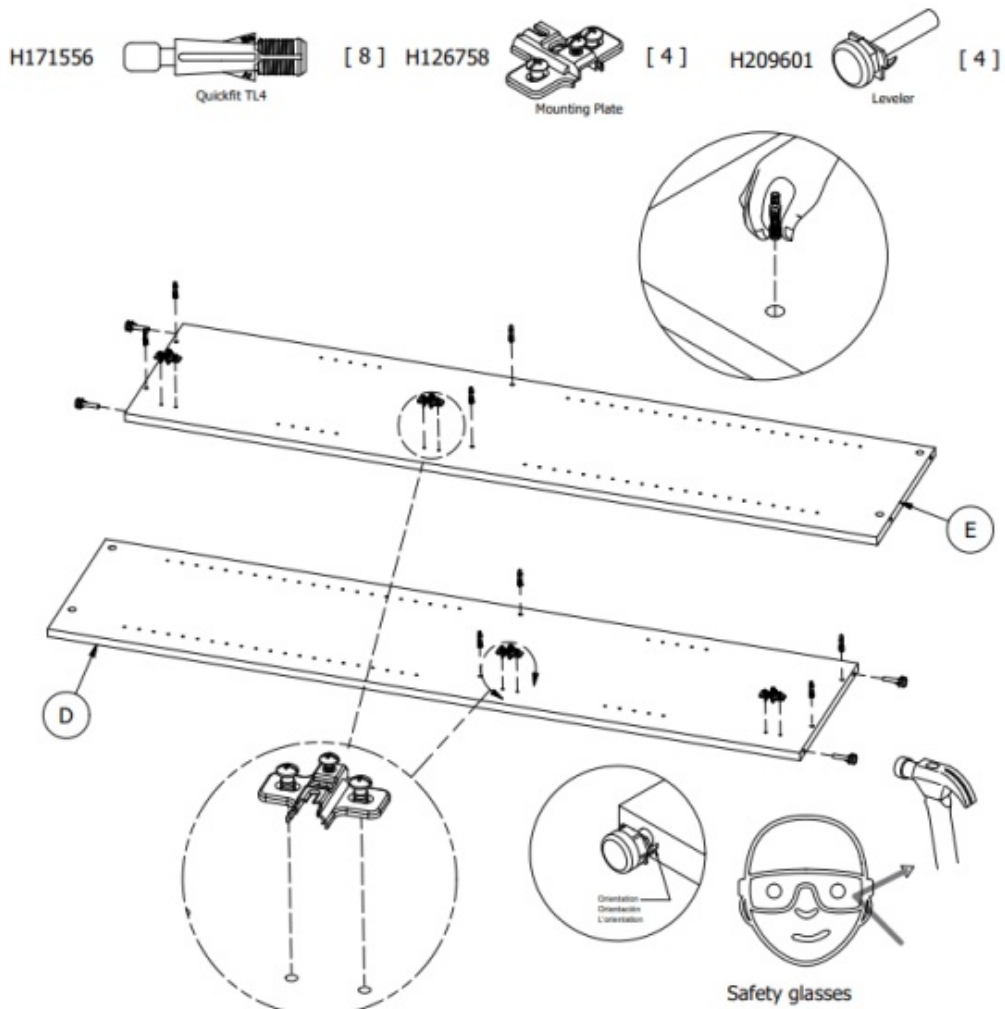


Get to know your Hardware

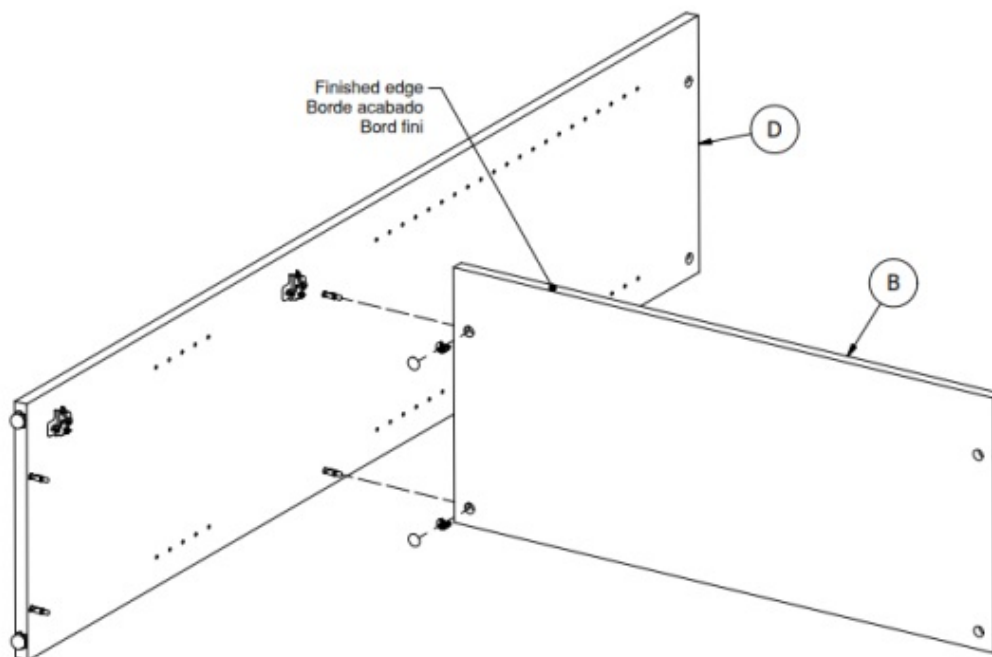
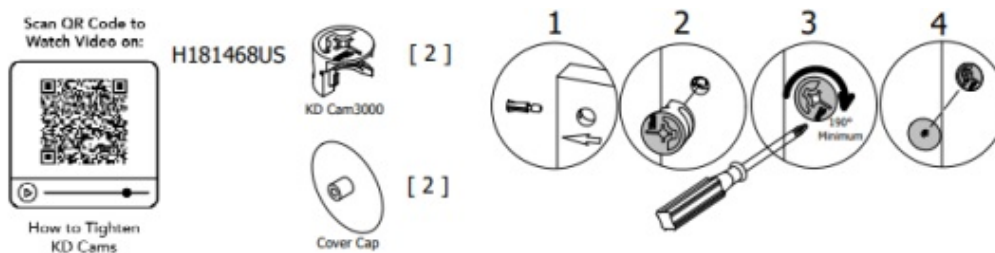
Hardware not to scale.



STEP 1 Prepare Panels



STEP 2 Assemble Panels



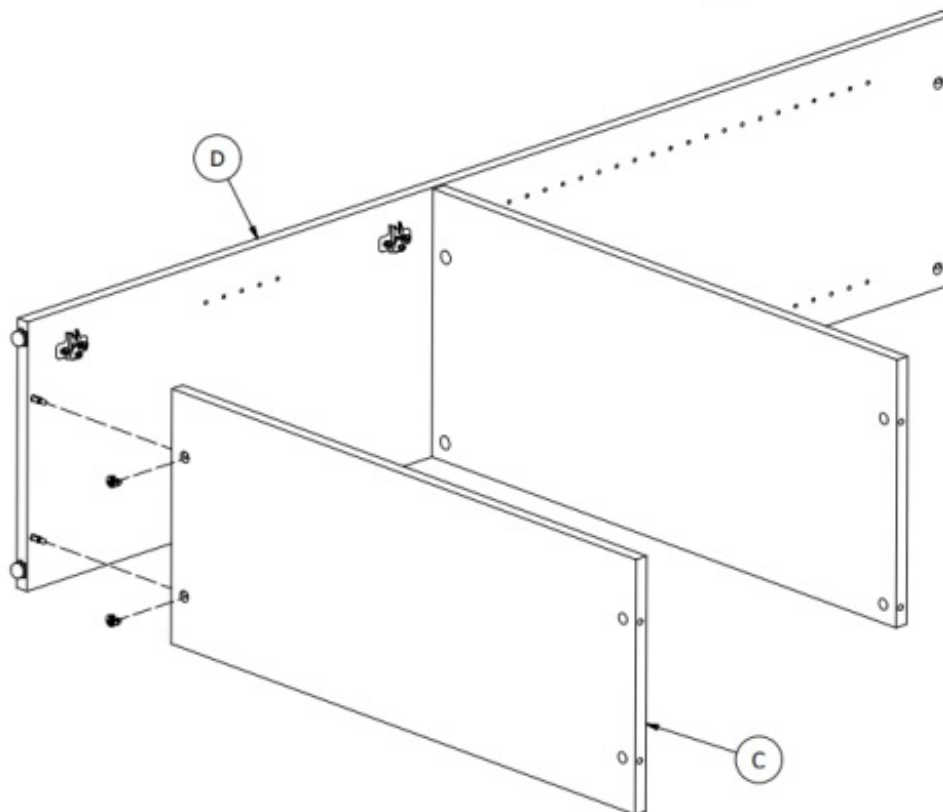
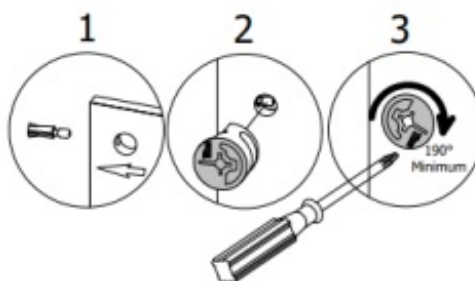
STEP 3 Assemble Panels



H181468US



[2]



4 STEP Assemble Panels



H181468US



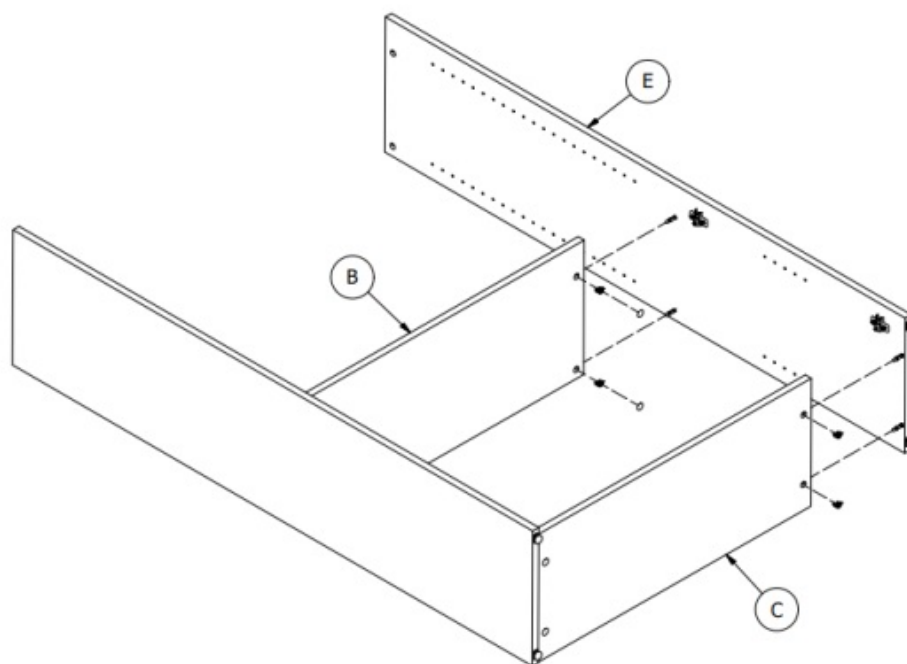
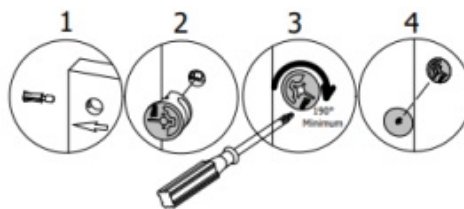
KD Cam3000

[4]



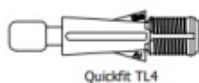
Cover Cap

[2]



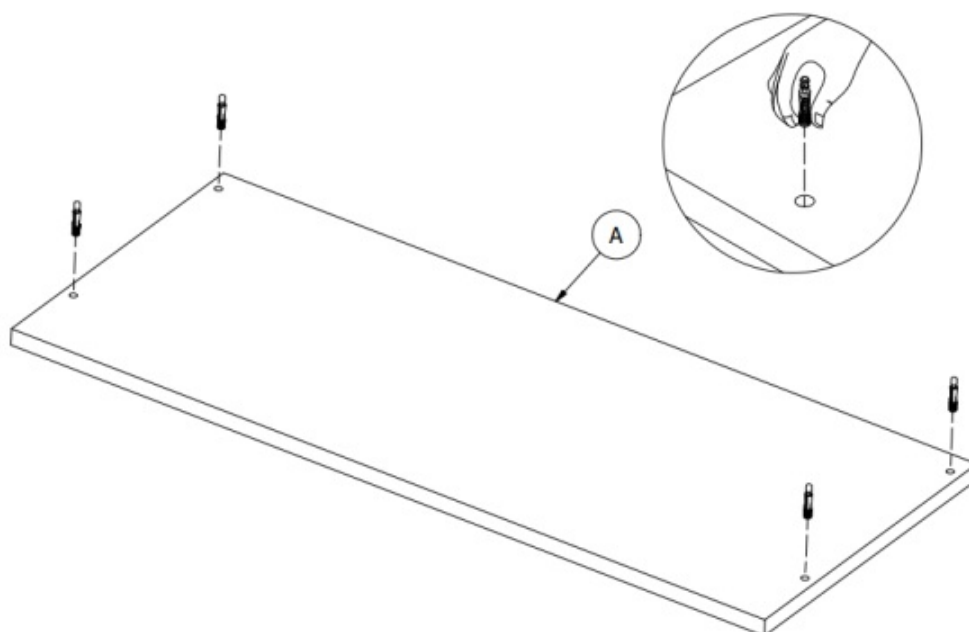
5 STEP Prepare Panel

H171556

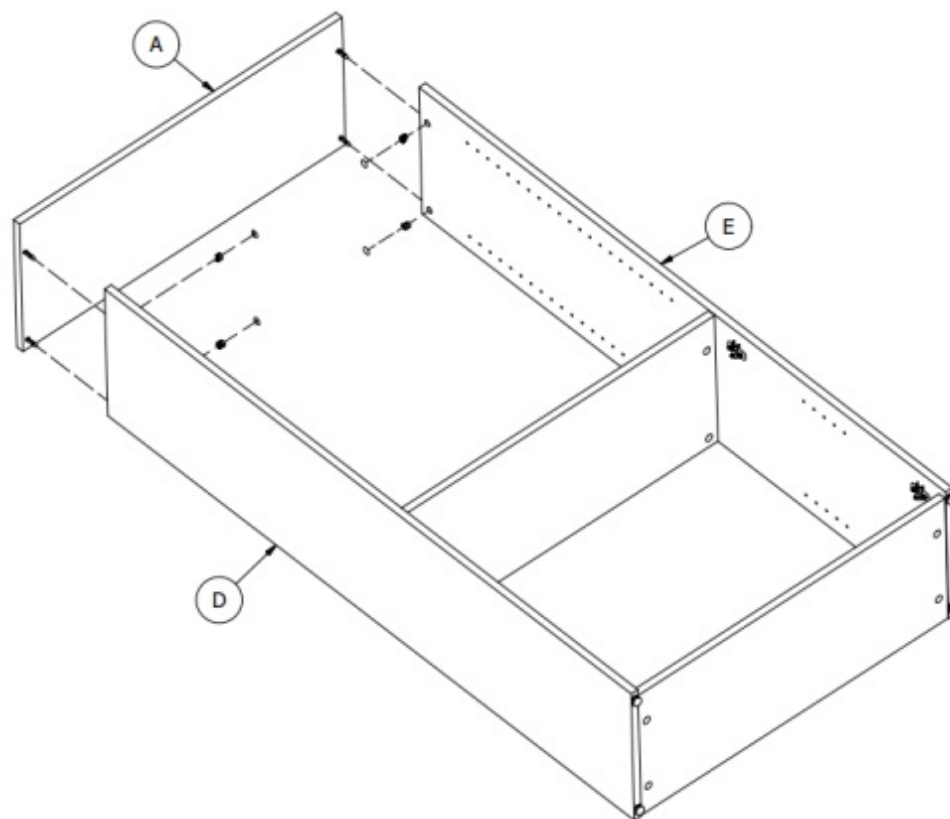
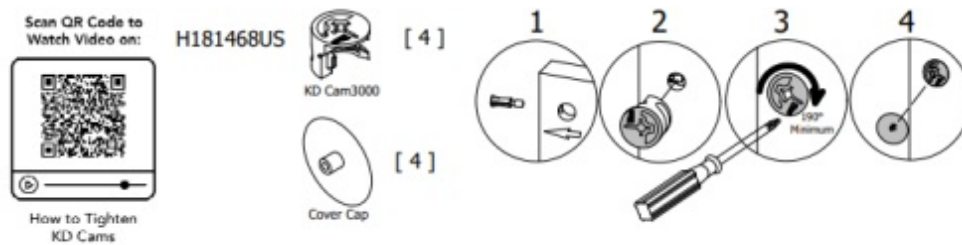


Quickfit TL4

[4]



STEP 6 Assemble Panels

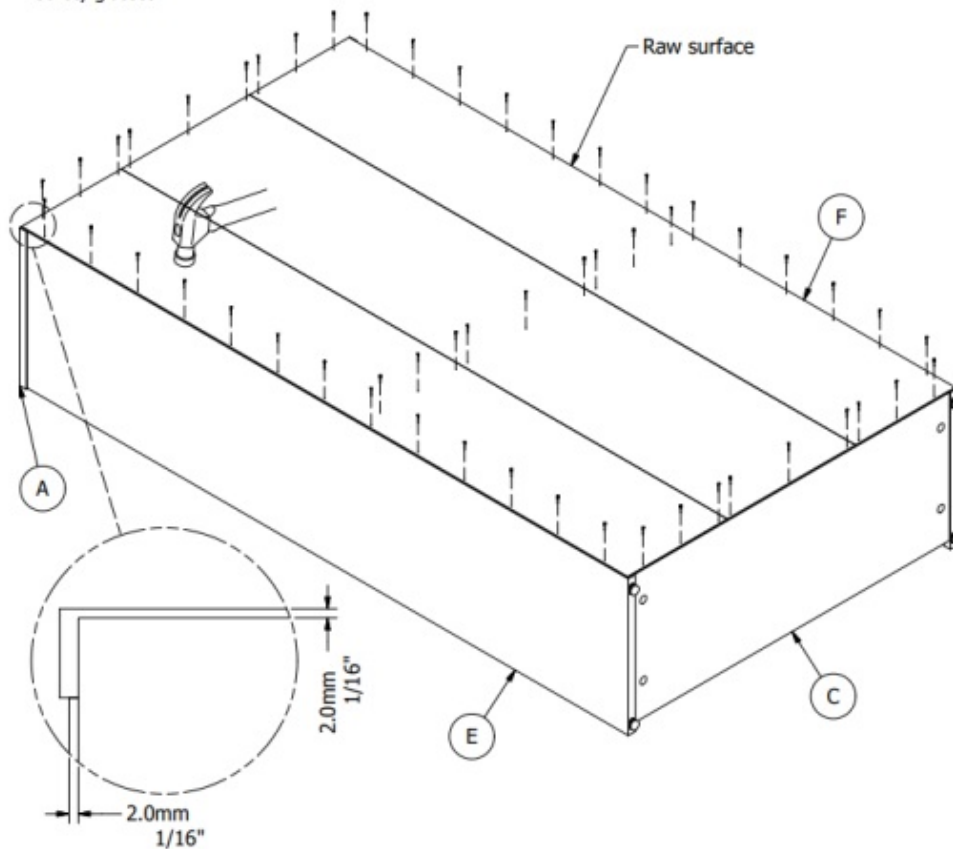


7 STEP Assemble Panels



Safety glasses

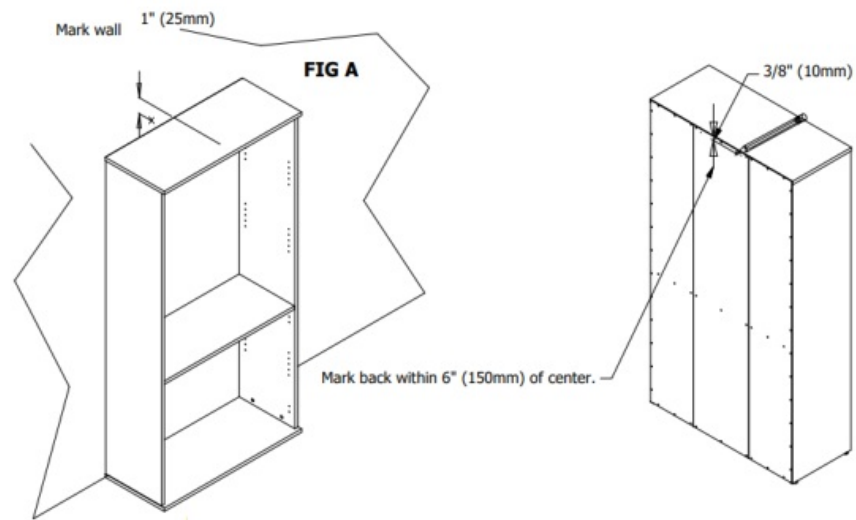
H34174 [53]



STEP 8 Wall Attachment

Secure unit to the wall with a tip-over restraint.

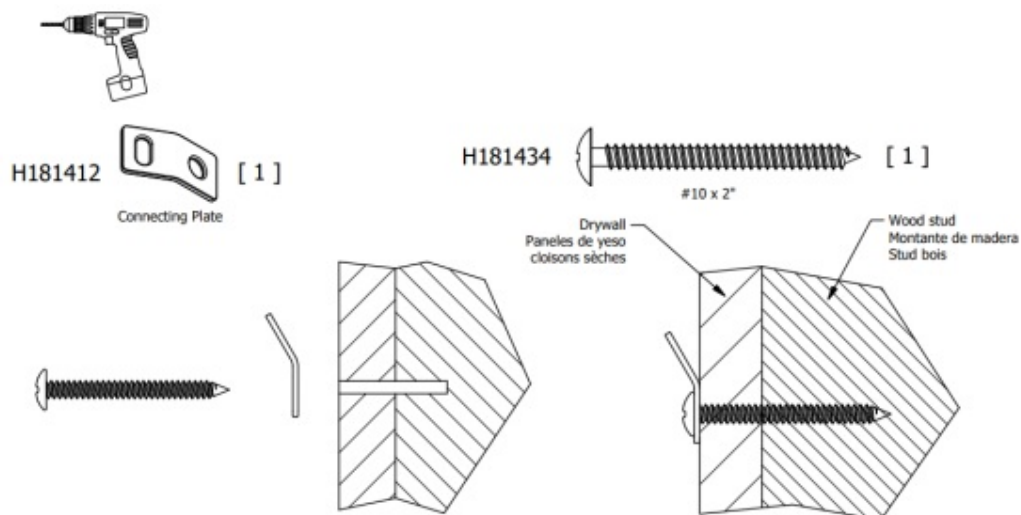
1. Place unit in desired location.
2. Locate wall stud nearest unit center. FIG A
3. On wall, mark center of stud location 1" below top of unit. FIG A
4. If a wall stud cannot be located mark hollow wall at unit center. FIG A
5. On back of unit, mark corresponding location 3/8" below top of unit. FIG B



STEP 9 Wall Attachment

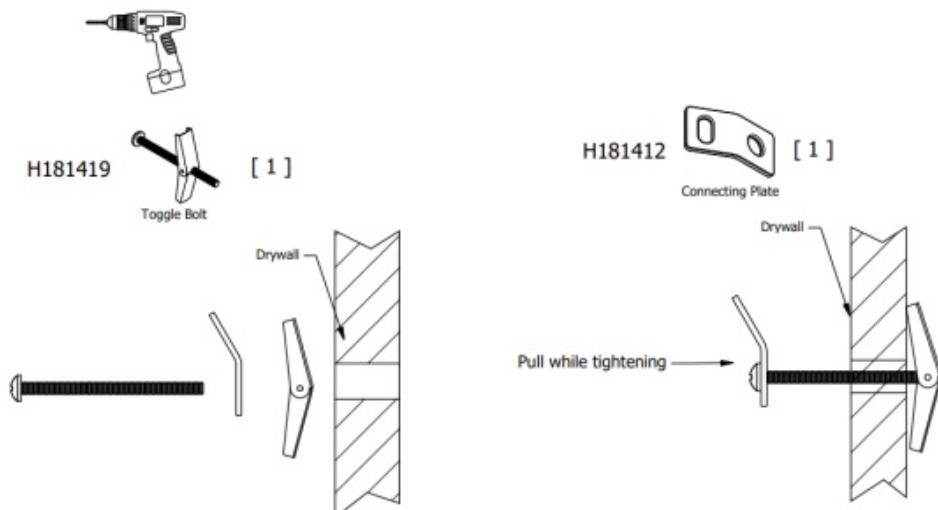
WALL STUD ATTACHMENT

Drill 1/8" hole 2" deep at mark on wall.



HOLLOW WALL ATTACHMENT

Drill 1/2" hole 1" deep at mark on wall.



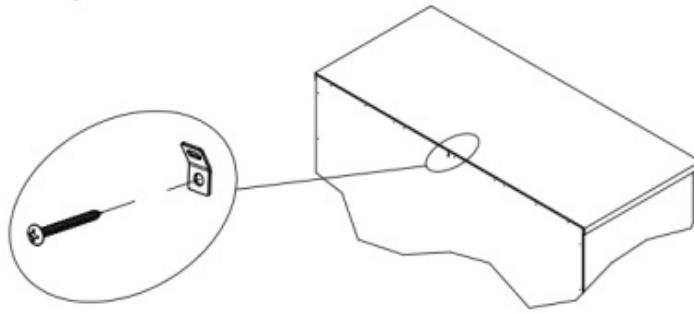
STEP 10 Wall Attachment

H107572  [1]
#8 x 1-1/2"

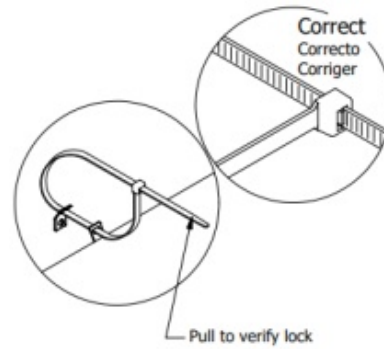
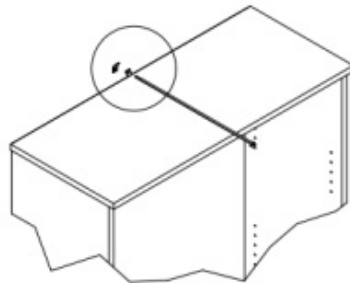
H181412  [1]
Connecting Plate



Drill 1/8" hole 1/2" deep at mark on unit.

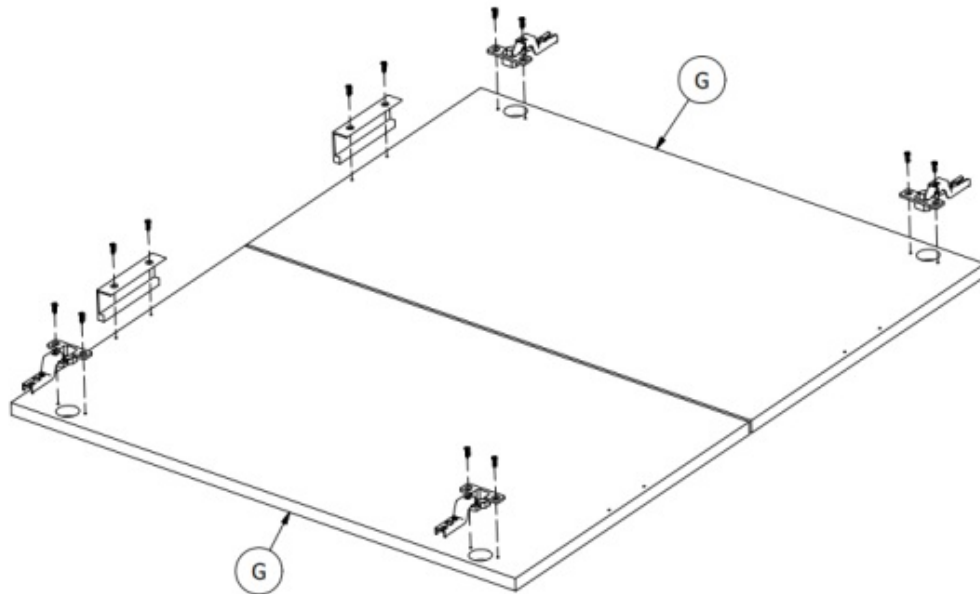
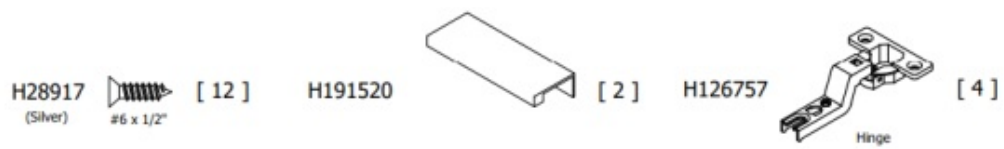


H181411  [1]
Nylon Cable Tie

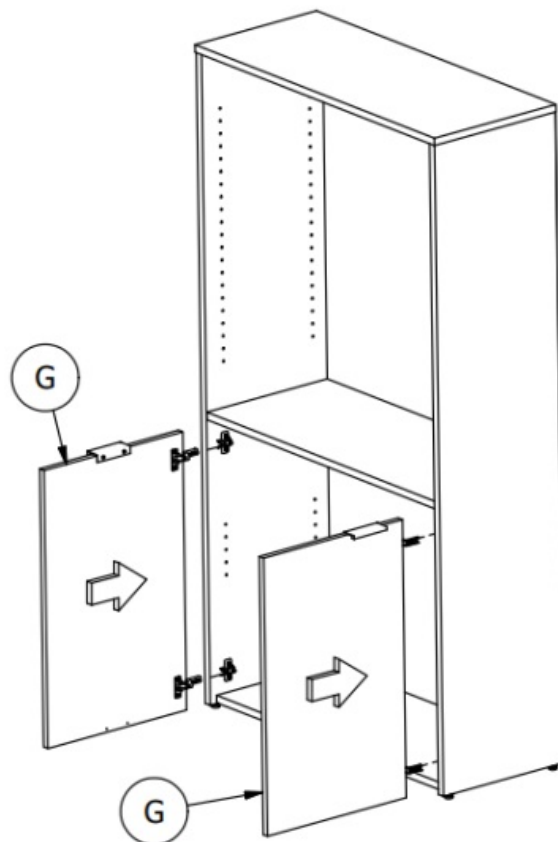


Use replacement cable tie with minimum breaking strength of 120lbs.

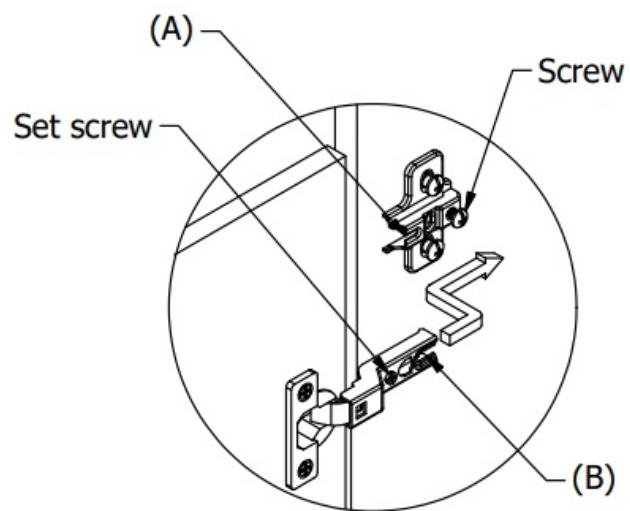
STEP 11 Prepare Doors



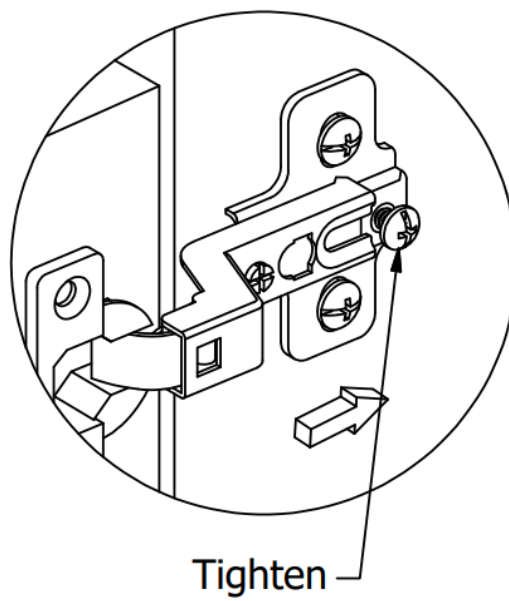
STEP 12 Attach Doors



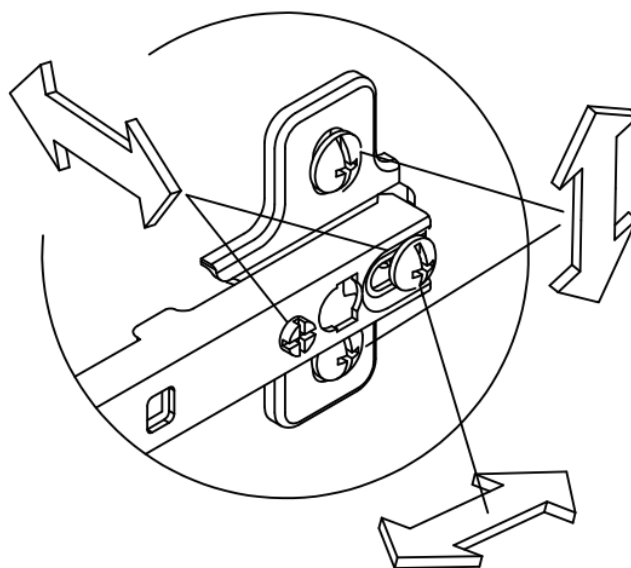
1. Align set screw with slot (A) and slot (B) with screw



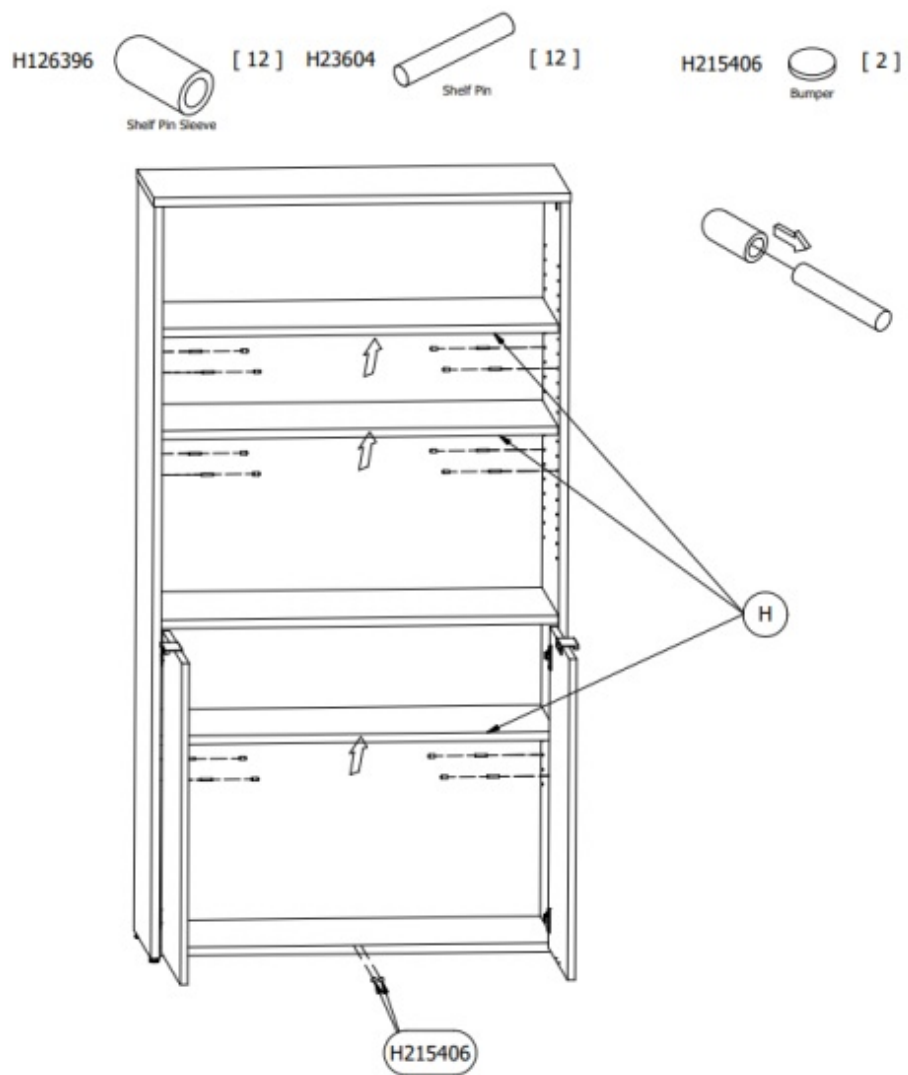
2. Slide hinge into position and tighten.



3. Adjust alignment



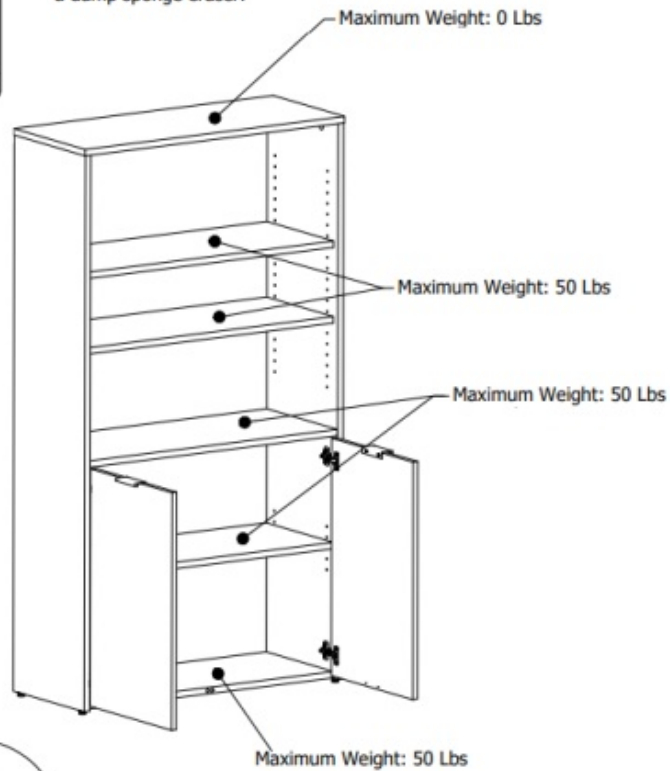
STEP 13 Insert Panels



STEP 14 Cleaning & Maximum Loading



Gently clean surfaces with
a damp sponge eraser.



PARTS LIST

JTB136FWWH

LABEL	PART	QTY	DESCRIPTION
A	W191894	1	TOP SHELF
B	W191895	1	FIXED SHELF
C	W191896	1	BOTTOM SHELF
D	W191897	1	LEFT SIDE PANEL
E	W191898	1	RIGHT SIDE PANEL
F	W191899	1	BACK PANEL
G	W191900	2	DOOR

H	W191901	3	ADJUSTABLE SHELF
---	---------	---	------------------



JTB136SGWH

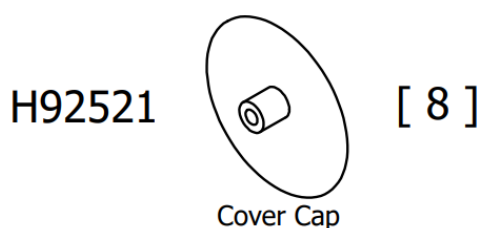
LABEL	PART	QTY	DESCRIPTION
A	W191894	1	TOP SHELF
B	W191895	1	FIXED SHELF
C	W191896	1	BOTTOM SHELF
D	W191897	1	LEFT SIDE PANEL
E	W191898	1	RIGHT SIDE PANEL
F	W191902	1	BACK PANEL
G	W191903	2	DOOR
H	W191901	3	ADJUSTABLE SHELF



JTB136SG

LABEL	PART	QTY	DESCRIPTION
A	W192775	1	TOP SHELF

B	W192776	1	FIXED SHELF
C	W192777	1	BOTTOM SHELF
D	W192778	1	LEFT SIDE PANEL
E	W192779	1	RIGHT SIDE PANEL
F	W191902	1	BACK PANEL
G	W191903	2	DOOR
H	W192780	3	ADJUSTABLE SHELF



Have an assembly question or need a replacement part? Just call
1-[800-950-4782](tel:800-950-4782), we are here to help.

Documents / Resources

	<p>bbf A191893B 5 Shelf Bookcase [pdf] Installation Guide</p> <p>A191893B, H171556, H181468US, A191893B 5 Shelf Bookcase, A191893B, 5 Shelf Bookcase, Bookcase</p>
--	--

References

- [User Manual](#)

5-Shelf Bookcase, A191893B, A191893B 5 Shelf Bookcase, bbf, Bookcase, H171556,

bbf H181468US

Leave a comment

Your email address will not be published. Required fields are marked *

Comment *

Name

Email

Website

☐ Save my name, email, and website in this browser for the next time I comment.

Post Comment

Search:

e.g. whirlpool wrf535swhz

Search

[Manuals+](#) | [Upload](#) | [Deep Search](#) | [Privacy Policy](#) | [@manuals.plus](#) | [YouTube](#)

This website is an independent publication and is neither affiliated with nor endorsed by any of the trademark owners. The "Bluetooth®" word mark and logos are registered trademarks owned by Bluetooth SIG, Inc. The "Wi-Fi®" word mark and logos are registered trademarks owned by the Wi-Fi Alliance. Any use of these marks on this website does not imply any affiliation with or endorsement.