



BAYROL 150200 Automatic pH with Wifi Module Instruction Manual

[Home](#) » [BAYROL](#) » BAYROL 150200 Automatic pH with Wifi Module Instruction Manual 

BAYROL 150200 Automatic pH with Wifi Module Instruction Manual



Contents

1	Introduction
2	Scope of delivery
3	Water values
4	Tools needed for Installation (not included)
5	Installation scheme
6	Electrical installation scheme
7	Cutting the hoses
8	Saddle clamp installation
9	Injection valve installation
10	Connection of the hoses to the dosing pump
11	Sensor installation
12	Electrical connections on the device
13	Commissioning
14	Operation
15	Additional Options
16	Winterizing
17	Maintenance
17.1	MAINTENANCE PLAN
18	Technical data
19	Declaration of Conformity
20	Disposal instructions
21	Safety instructions
22	Documents / Resources
23	Related Posts

Introduction

Congratulations on the purchase of your Automaticp H. You have chosen the easiest way to achieve a perfectly balanced pH value in your pool.



Please be sure to read the “Safety instructions” supplement!

IMPORTANT: The AutomaticpH must be installed by an experienced pool dealer to ensure proper functioning!

- Please read these instructions carefully and make sure that all necessary parts for installation as well as all required tools are at hand.
- Failure to comply with these instructions may result in health and/or equipment and installation hazards!
- Only use **BAYROL** water care products!
- The housing of the AutomaticpH does not have to be opened for installation.
- Be sure to observe all general and special hazard warnings when handling liquid water care products.
- Also observe all generally applicable safety regulations. Wear protective clothing if necessary

Scope of delivery



1. AutomaticpH
2. Saddle clamp Ø 50 mm, 2 pcs
3. Pressure hose
4. Suction hose
5. Wall mounting set
6. Feed filter
7. Sensor holder
8. Injection valve
9. pH sensor
10. Canister lid with hole for suction hose
11. Cleaning solution for sensor
12. Buffer solution pH 7
13. Teflon tape

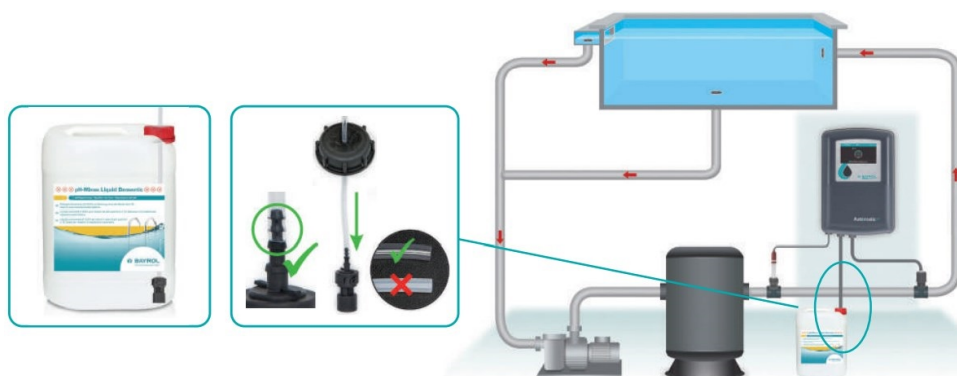
Water values

	Alkalinity/TAC (mg/l)	pH value (pH)
Recommended values	Min. 80	7.2
Tolerated values	Min. 80	7.0 – 7.4
To lift	Add BAYROL Alca-Plus®	Add pH-Plus Liquid
To lower	–	Add pH-Minus Liquid Domestic
Test during season	monthly	weekly

Tools needed for Installation (not included)



Installation scheme

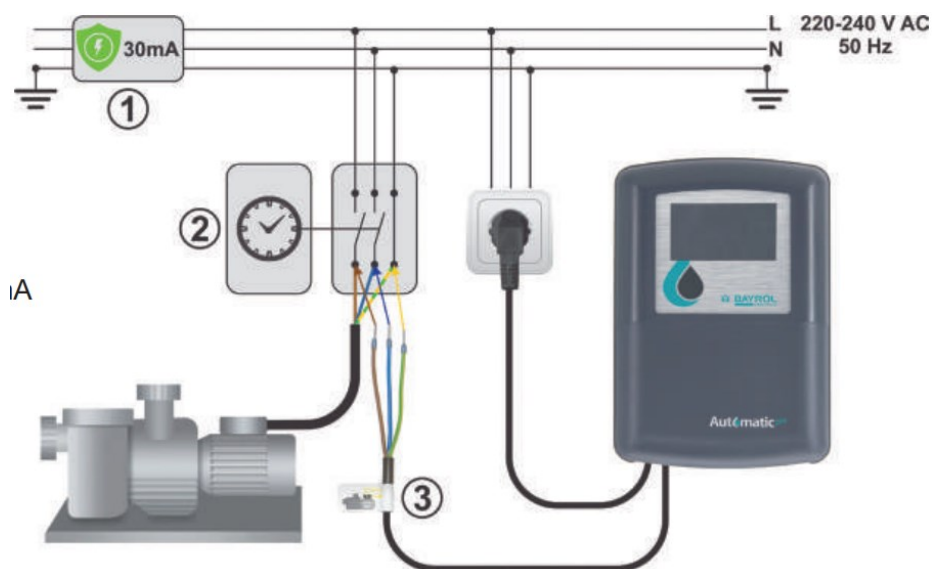


IMPORTANT:

The injection of pH-Minus Liquid Domestic or pH-Plus Liquid must be the last component of the installation before flowing into the pool. Make sure that the pressure in the circulation line does not exceed 1.0 bar!

We recommend using the convenient BAYROL Smart&Easy Connector with the additional flow monitoring.

Electrical installation scheme



IMPORTANT:

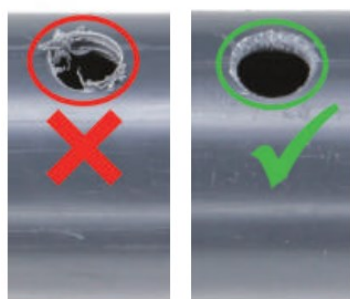
The electrical installation of the AutomaticpH must be done by an electrician.

1. Residual Current Protective Device (RCD) $\leq 30 \text{ mA}$
2. Filter control respectively time switch
3. Power supply for dosing pumps (voltage only when circulation pump is running)

Cutting the hoses



Saddle clamp installation



IMPORTANT: respect mounting position

Sensor



Injection valve



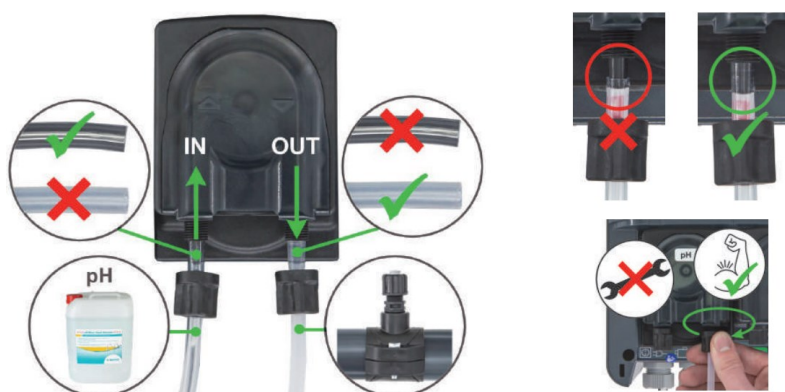
We recommend the use of the convenient **BAYROL** Smart&Easy Connector.



Injection valve installation



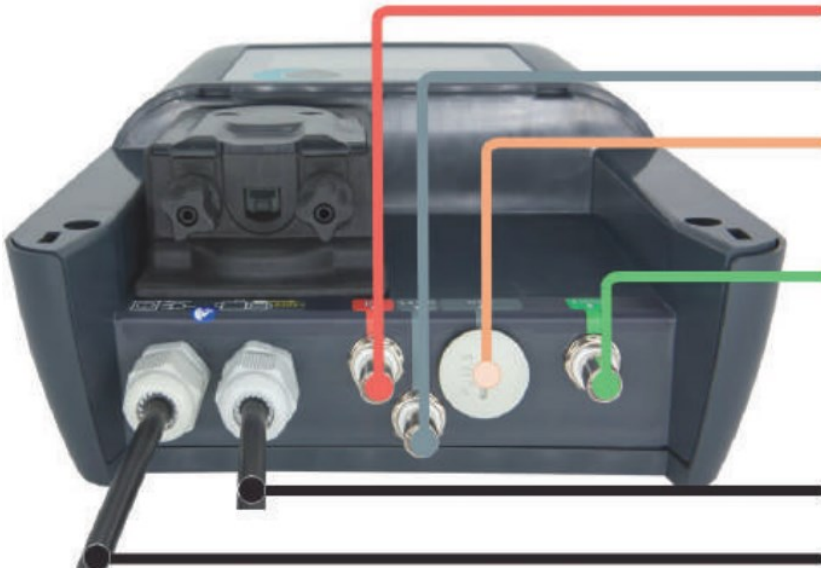
Connection of the hoses to the dosing pump



Sensor installation



Electrical connections on the device



1. pH sensor
2. Level pH (for optional suction lance)
3. USB port (updates via USB-stick)
4. Flow (for optional paddle switch)
5. Power supply for dosing pump
6. Power cable

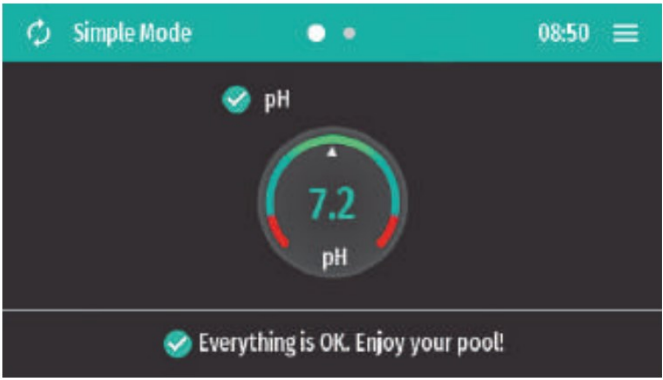
Commissioning

As soon as the water values are set and your device is installed with all components, you can start commissioning the AutomaticpH.

Switch on the AutomaticpH and follow the instructions on the display. You will be guided through the initial setup wizard, which will help you with the essential settings. Of course, you can also access all the settings you have made later and adjust them if necessary. As soon as the individual steps are completed, the AutomaticpH starts operation.

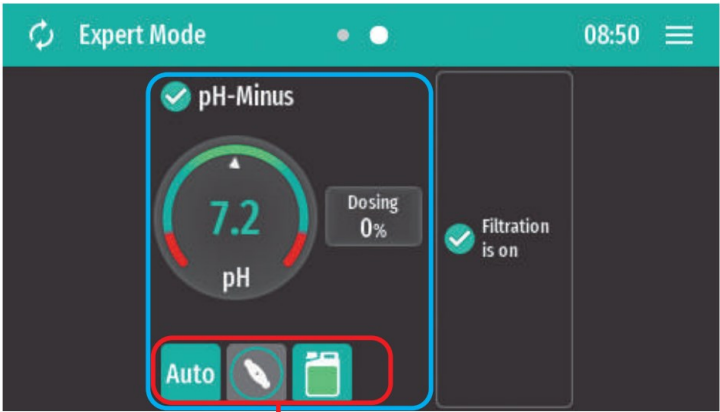
Operation

Tap in the blue areas ...






Access codes


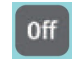
User Code	Service Code
1234	5678




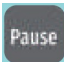
Status Icons pH

-  Operating mode
-  Indicator dosing pump pH
-  Fill level canister pH (red, when empty)

Operating modes pH value

	Auto The Automatic pH automatically doses pH-Minus Liquid Domestic (or pH-Plus Liquid) depending on the desired pH value in the pool.
	Off The automatic pH control is switched off.

Timer functions pH value

	Fill and/or flush pump hoses In the event that the pH dosing hose is empty (e.g. when changing canisters), you can start the pH-pump manually here to fill the hose. Stop the process as soon as the dosing hose is completely filled (i.e. up to the injection valve). Another menu helps you to rinse the dosing hose (e.g. when winterizing the tank).
	Time limited dosage The pH pump can be switched on for a selectable period of time. You can choose whether the pH dosing should stop when the desired value is reached or only after the selected time has elapsed. You can stop the dosing manually at any time.
	Pausing the pH regulation The automatic control of the pH value can be stopped for an adjustable period of time. After this pause, the previously set regulation starts again automatically.

Message list

All messages are listed in the message list. Additional information is displayed here for each message. In addition, AutomaticpH offers wizards for most messages that will guide you step by step to the solution. If the issue cannot be solved despite following all the instructions, please contact your dealer.

Calibration – adjustment of the measured pH value

Please note that when calibrating the pH sensor using the enclosed buffer solutions, you must remove the sensor from its holder. Make sure that not too much water can leak out during this process. Follow the instructions on the display

RECOMMENDATION

To avoid taking out the sensors, you can perform the calibration with the pool water. Please measure the pH value with a photometer (e.g. BAYROL Electronic Pooltester)

Additional Options

KIT Smart&Easy Connector Flow – Flow monitoring

The optionally available KIT Smart&Easy Connector Flow allows you to install the pH sensor and the pH injection point (pH-Minus Liquid Domestic or pH-Plus Liquid) in a particularly convenient and easy-to-maintain location.

The Smart&Easy Connector also includes an integrated paddle flow switch, which is connected to the AutomaticpH by means of a simple plug-in connection.



KIT Level Automatic Single – Canister monitoring

The optionally available KIT Level Automatic Single allows direct monitoring of the filling level of the canister for pH-Minus Liquid Domestic or pH-Plus Liquid by using an easy-to-handle suction lance. When the canister is empty, a message is shown on the display. The KIT replaces the supplied foot filter and can thus be easily connected to the pre-designated level pH connection and mounted on the corresponding liquid container with the

aid of a screw cap.



Winterizing

In colder temperatures, it is recommended to take the AutomaticpH out of operation (e.g. during the winter period).

The following instructions show you how to winterise your pool:

In case of active winterizing (pool filter system remains in operation)

- Stop the filter pump.
- Rinse the pump hoses with clear water.
- Empty all pump hoses.
- Remove the sensor from the holder and store it in its container, which is preferably filled with KCl solution or also with clean swimming pool water. Store the sensor in a dry and cool, but frost-free place.
- Insert a 1/2" plugs instead of the sensor holders.
- Store the canister for pH-Minus Liquid Domestic or pH-Plus Liquid in a dry and cool but frost-free place.

In case of passive wintering (filter system of the pool is switched off).

- Stop the filter pump.
- Rinse the pump hoses with clear water.
- Empty all pump hoses.
- Close and empty the filter system. Make sure that the entire pool circulation system is drained as much as possible.
- Remove the sensor from the holder and store it in its container, which is preferably filled with KCl solution or also with clean swimming pool water. Store the sensor in a dry and cool, but frost-free place.
- Store the canister for pH-Minus Liquid Domestic or pH-Plus Liquid in a dry and cool but frost-free place.

Maintenance

The indicated amount of maintenance is just the minimum requirement. The frequency of maintenance depends on the intensity of use.

The frequency of maintenance is determined by the applicable, country-specific requirements! This may result in considerably shorter maintenance intervals; the relevant country-specific specifications and standards must be observed.

NOTE

Only use original BAYROL Technik components. The use of third-party components can lead to malfunction during operation. BAYROL Deutschland GmbH disclaims all liability and warranty for this.

MAINTENANCE PLAN

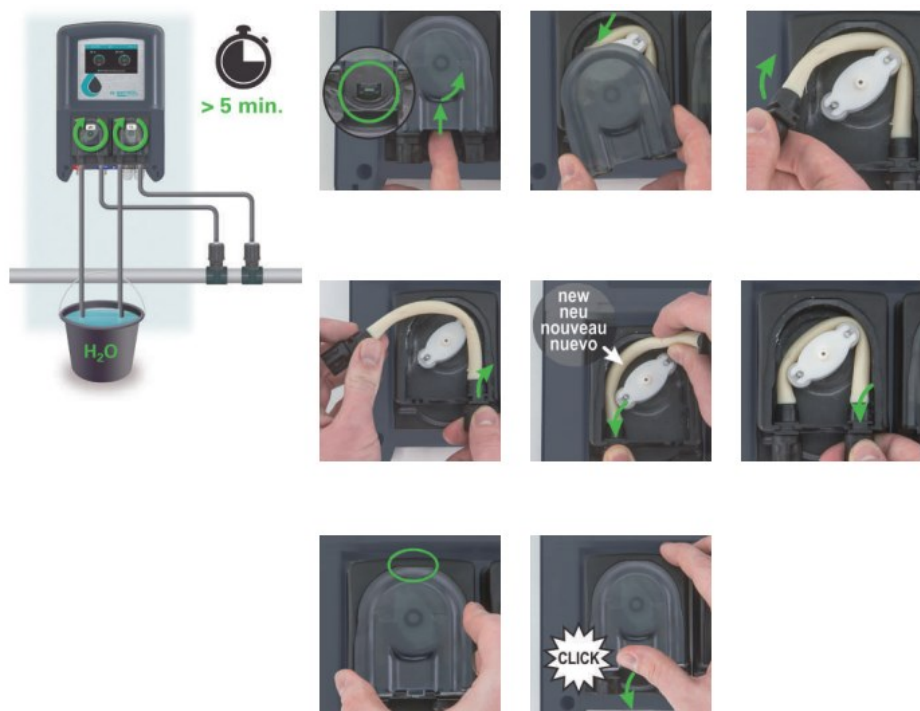
Weekly check:

- Make sure you keep your filter system in perfect condition.
- Check the pH value, preferably with a BAYROL Technik Electronic Pool Tester.
- Carry out a visual inspection of the system for leaks in all components, lines and hoses.

Annual maintenance:

- Replace the pH sensor and calibrate it.
- Replace the dosing pump hoses.
- Check the pH-injection valve and replace it if necessary.

Hose replacement dosing pump:



Technical data

Display	4.3" TFT colour touchscreen, 32bit Microprocessor, enhanced graphic acceleration
Regulation	Adaptive proportional control
Dosing	pH-Minus Liquid Domestic or pH-Plus Liquid
Measurement of pH value	Single-rod sensor, BNC
Measuring range pH	0 – 10.0
Cable length sensors	2 m
Max. pump delivery pressure	1.5 bar
Max. pump flow rate	2.4 l/h
Electrical connection	240 V~, 50/60 Hz
Power consumption	Controller max. 10 W / Dosing pump max. 8 W
Protection class of the device	IP 65
Operating temperature	0 °C – 40 °C // 32 °F – 104 °F
Dimension of the controller	315 x 210 x 94 mm (H x W x D)
Weight of the controller	Approx.: 1.7 kg

Declaration of Conformity

- We, BAYROL Deutschland GmbH
- Robert-Koch-Str. 4
- 82152 Planegg/Steinkirchen
- Germany

hereby declare that the models of the product named in the following that we bring into circulation meet the requirements of the indicated EC directive.\

Product designation: Measurement, control, and dosing system for swimming pools

Product model: AutomaticpH

Series no.: see type plate

EC directives: EC – Low Voltage Directive (2014/35/EU) EC – EMC Directive (2014/30/EU)

Harmonizing standards used: EN61000-3-2, EN61000-3-3, EN61000-4-2, EN61000-4-3, EN61000-4-3, EN61000-4-4, EN61000-4-5, EN61000-4-6, EN61000-4-8, EN61000-4-11

Date, manufacturer signature: 01.03.2022



Signer's information: Lars Birckenstaedt, Managing Director BAYROL Group

Disposal instructions



Disposal of electrical and electronic household appliances in the European Union

All products marked with this symbol must not be disposed of with household waste after use. It is the user's responsibility to dispose of this type of waste by taking it to a recycling centre suitable for the selective disposal of electrical and electronic waste. The appropriate recycling and treatment of this waste contribute significantly to the preservation of the environment and the health of users. For more information on collection points for this type of waste, please contact the retailer from whom you purchased the product or your local council.

Safety instructions

Hazards from non-compliance with safety information

Non-compliance with safety information can result in hazards to persons, the environment, and the equipment. Non-compliance with safety information will result in a forfeit of any potential right to damage compensation.



Professional installation

This product must be installed, commissioned and operated by a competent swimming pool professional. All applicable installation rules and local regulations must also be observed. This product is intended for use in private swimming pools only



Disconnect power supply (unexpected start-up)

The controller starts operation as soon as there is voltage on the incoming power line. Dosing pumps may start turning at any time.

Potential consequence: damage to property or health

- The unit must be disconnected from the power supply before any service work is carried out.



Caustic, Corrosive and fire-promoting dosing liquids

The dosing liquids used are caustic, corrosive and fire-promoting.



Potential consequence: damage to property or health (also danger to life).

- During commissioning and operation, always observe all relevant health and safety regulations as well as the safety data sheets of the products used.
- Never leave the ends of the dosing hoses hanging loosely to avoid possible contact of the water care products with each other or with other liquids or components.



Chlorine gas development on contact of pH-Minus and liquid chlorine

Toxic chlorine gas is produced when pH-Minus and liquid chlorine come into contact



Potential consequence: damage to property or health (also danger to life).

- Make sure that pH-Minus and liquid chlorine never come into contact with each other.
- Make sure that pH-Minus and liquid chlorine are never dosed into standing water.
- It is essential that the power supply for the dosing pumps is switched so that the dosing pumps are only supplied with power when the circulation pump is running.



Potential overdosing of liquid maintenance products

Despite comprehensive safety functions of the device a sensor failure and other errors may result in an overdosing of liquid maintenance products.



Potential consequence: damage to property or health

- Set up your installation so that uncontrolled dosing is not possible in the event of sensor failure and other errors, and/ or such that uncontrolled dosage is recognised and halted before damage is incurred.



Opening the housing

Danger of electric shock in case of opening the casing.

Potential consequence: damage to property or health (also danger to life).

- Do not open the unit casing of the controller, especially if the controller is connected to power supply network.



Dangerous system settings

Changing system settings (default values) can be dangerous under certain circumstances.

Potential consequence: Damage to property or health.

- Settings must be changed by trained technicians only.
- The operator assumes liability if settings are used improperly or modified.



Unauthorised access

Unauthorised access may result in dangerous settings.

Potential consequence: damage to property or health.

- Make sure unauthorised access to the controller and accessories such as buffer and cleaning solutions is not possible at any time.
- In particular, exclude access to the appliance and accessories by children.



Unexpected start-up

The unit starts working as soon as voltage is applied to the mains input. The dosing pumps can start at any time.

Potential consequence: Damage to property or health.

- Do not supply the unit with voltage until all preparations for safe start-up and operation have been completed.



Use of products from other manufacturers

The use of products from other manufacturers, such as hydrochloric acid for pH regulation, may result in serious damage in a short time!

Potential consequence: Damage to property or health.

- The system may only be operated with original BAYROL products and BAYROL spare parts only.
- BAYROL does not accept liability for issues caused by using other manufacturers' products or spare parts.



Disregard of mandatory change of components

Not changing relevant components may cause leakages or malfunction. Caustic and corrosive liquids can escape.

Potential consequence: damage to property or health (also danger to life).

- Change all in the maintenance plan named components in the specified intervals.
- Check the components for proper condition and function at the intervals specified in the maintenance plan.



Dosing liquids in hoses and components

Dosing pump, hoses, injection valve and foot filter are filled with dosing liquids during operation. Caustic and corrosive liquids can escape during maintenance work.

Potential consequence: damage to property or health

- Before maintenance work, flush the dosing pumps and all connected components with water for at least 5 minutes as shown in the illustration.
- Avoid any contact with the dosing liquids.
- Wear suitable protective clothing. Wear protective clothing.

- Familiarise yourself with the safety instructions for the dosing liquids used.



IMPORTANT NOTICE!

Compliance with the relevant accident prevention regulations, as well as other legal regulations and the generally recognised safety rules must be ensured by the system operator!

BAYROL Deutschland GmbH

Robert-Koch-Straße 4 · D-82152 Planegg

Telefon + 49 (0)89 85701-0

info@bayrol.de · www.bayrol.de

BAYROL France SAS

Chemin des Hirondelles – BP52

F-69572 Dardilly Cedex

Tél. +33 (0)4 72 53 23 87

www.bayrol.fr

BAYROL Deutschland GmbH

Robert-Koch-Str. 4 · D-82152 Planegg

Phone + 49 (0)89 85701-0

info@bayrol.de · www.bayrol.com

BAYROL Ibérica SLU

Avda Diagonal 453 bis Planta Entresuelo E-08036 Barcelona


Tel. +34 93 272 48 48

www.bayrol.es

1100030C-2M0301



Documents / Resources

	<p>BAYROL 150200 Automatic pH with Wifi Module [pdf] Instruction Manual 150200 Automatic pH with Wifi Module, 150200, Automatic pH with Wifi Module, Wifi Module, Module, Automatic pH</p>
---	--