

BAUHN AMAB-0222-D Dual Monitor Bracket Installation Guide

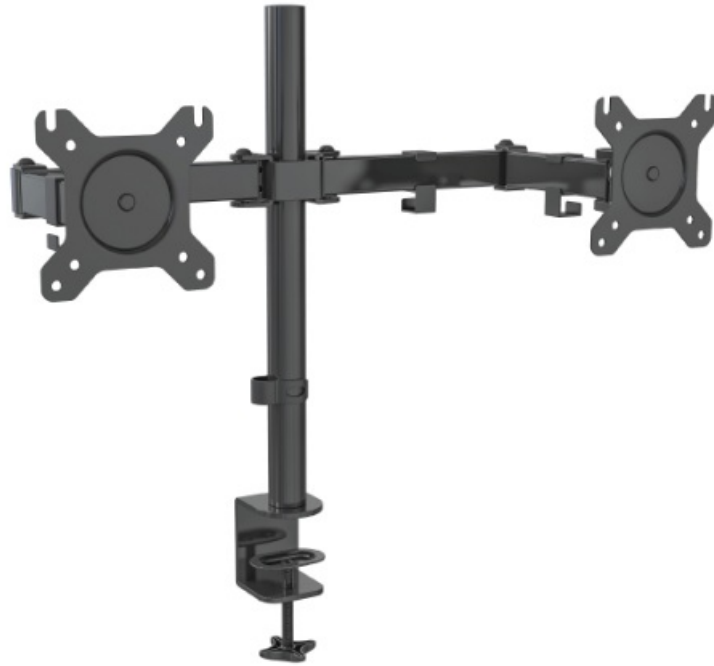
[Home](#) » [BAUHN](#) » BAUHN AMAB-0222-D Dual Monitor Bracket Installation Guide 

Contents

- [1 BAUHN AMAB-0222-D Dual Monitor Bracket](#)
- [2 Installation Guide](#)
- [3 Attach to your desk \(Mounting to the edge of the desk\)](#)
- [4 Attach the arm](#)
- [5 Mount your monitors](#)
- [6 Adjust to your space](#)
- [7 Hide those cables](#)
- [8 Give us a call](#)
- [9 Documents / Resources](#)
- [10 Related Posts](#)



BAUHN AMAB-0222-D Dual Monitor Bracket

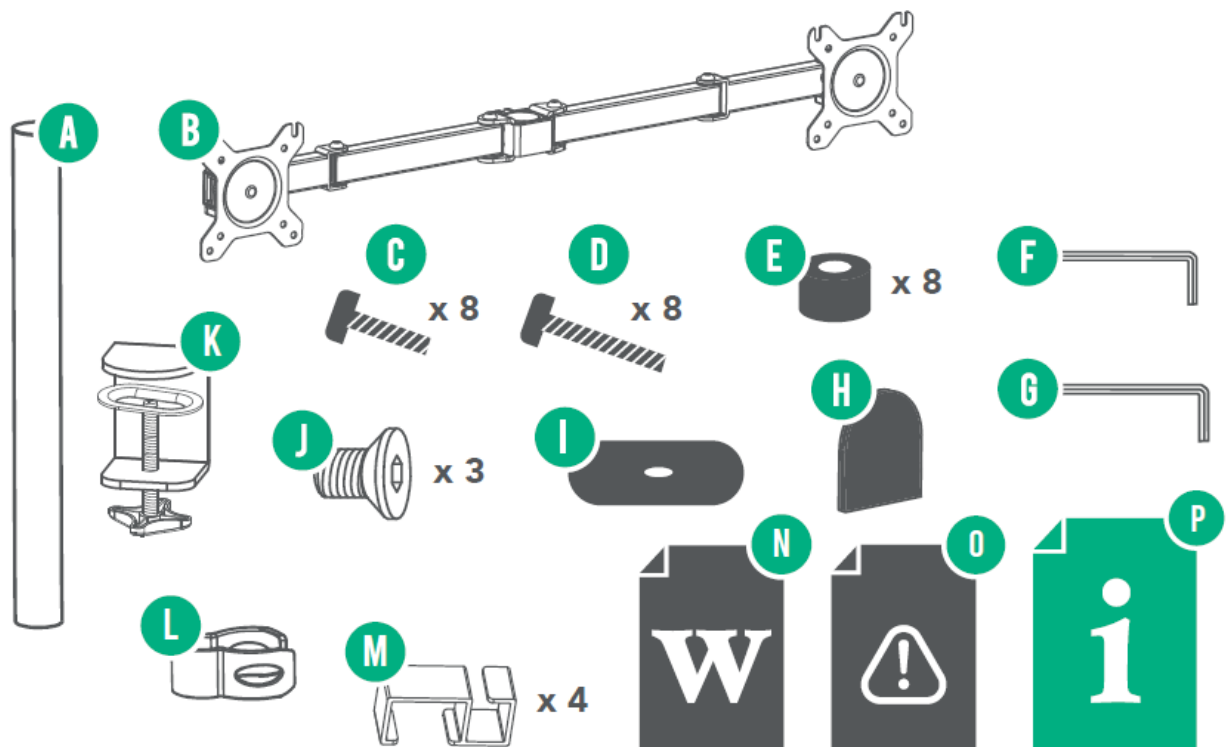


Installation Guide

Model: AMAB-0222-D
Dual Monitor Bracket

Have you got everything?

You will also need a Phillips-head screwdriver to secure your monitors to the bracket



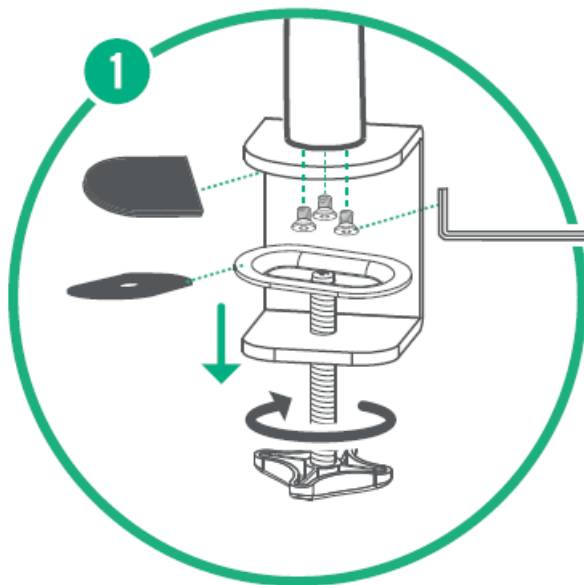
Unpack the box (be gentle) and make sure all of these items are there:

1. Pole

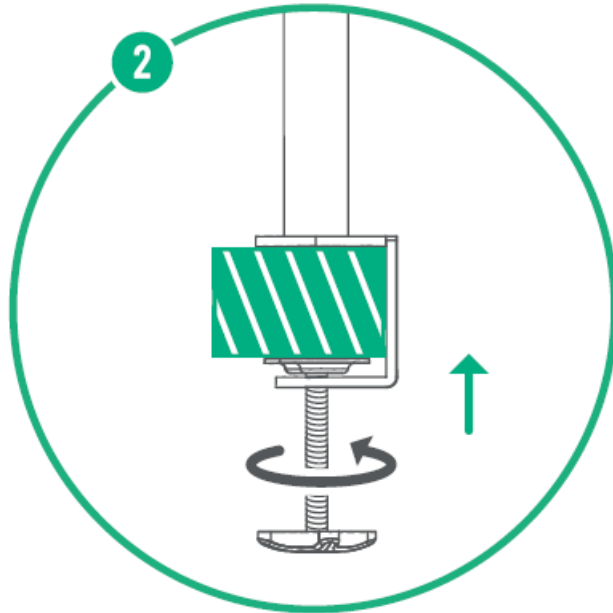
2. Monitor Arms
3. M4 x 8mm Screws (8)
4. M4 x 12mm Screws (8)
5. Screw Spacers (8)
6. 4mm Hex Key
7. 5mm Hex Key
8. Pole Cover
9. Bracket Clamp Cover
10. Cap Screw (3)
11. Bracket Clamp
12. Pole Cable Clip
13. Monitor Arm Cable Clips (4)
14. Warranty Certificate
15. General Safety Warnings
16. Installation Guide

Attach to your desk (Mounting to the edge of the desk)

1. Adhere the bracket clamp cover to the bracket clamp and attach the clamp to the base with the cap screw.
Use the 4mm hex key to tighten



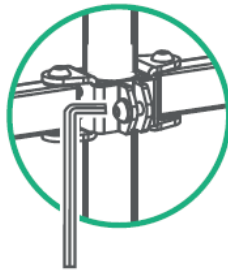
2. Tighten the bracket clamp from beneath by turning the adjuster clockwise and make sure it's tight.
Slide the base cover on and clip into place

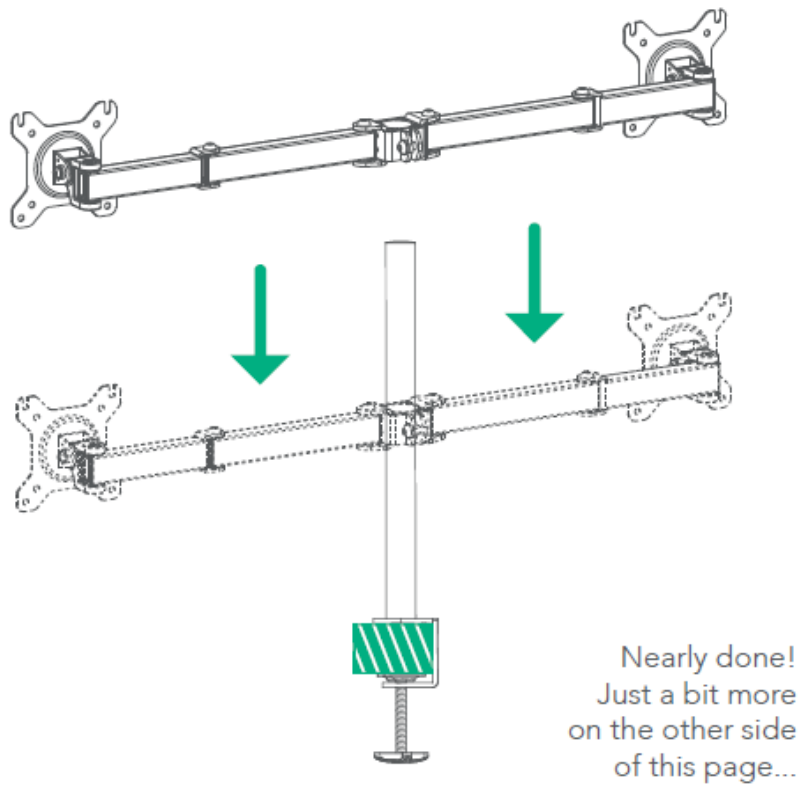


Be careful not to overtighten the clamp or you might cause surface damage to your desk or table

Attach the arm

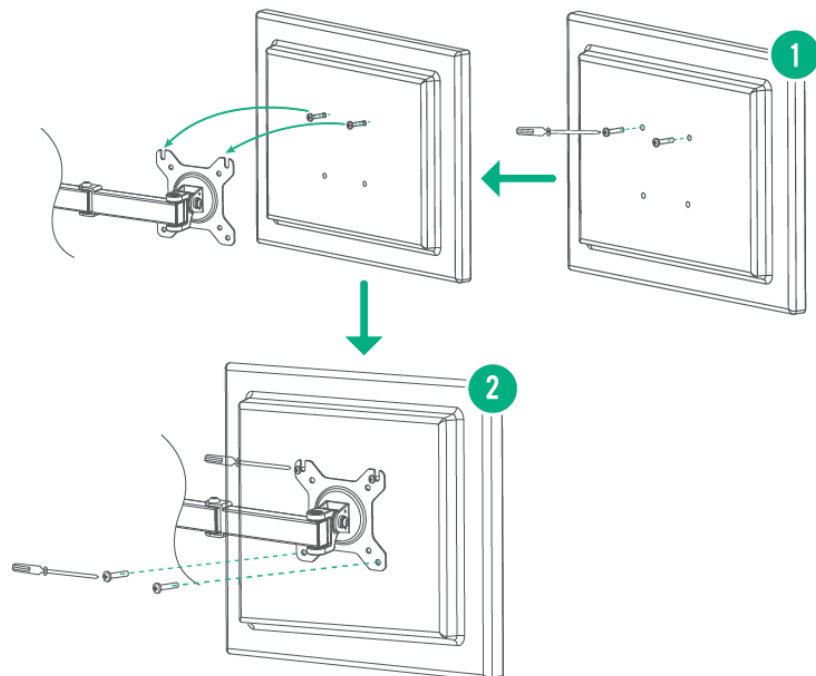
Slide the bracket arms onto the pole. Slide up or down to adjust the height of where your monitors will sit. Tighten into position at the back, using the supplied 5mm hex key.





Mount your monitors

Install the upper two screws but don't screw them completely just yet. Hang the monitor on the mounting plate. Install the lower two screws. Now you can fasten the upper two screws all the way.

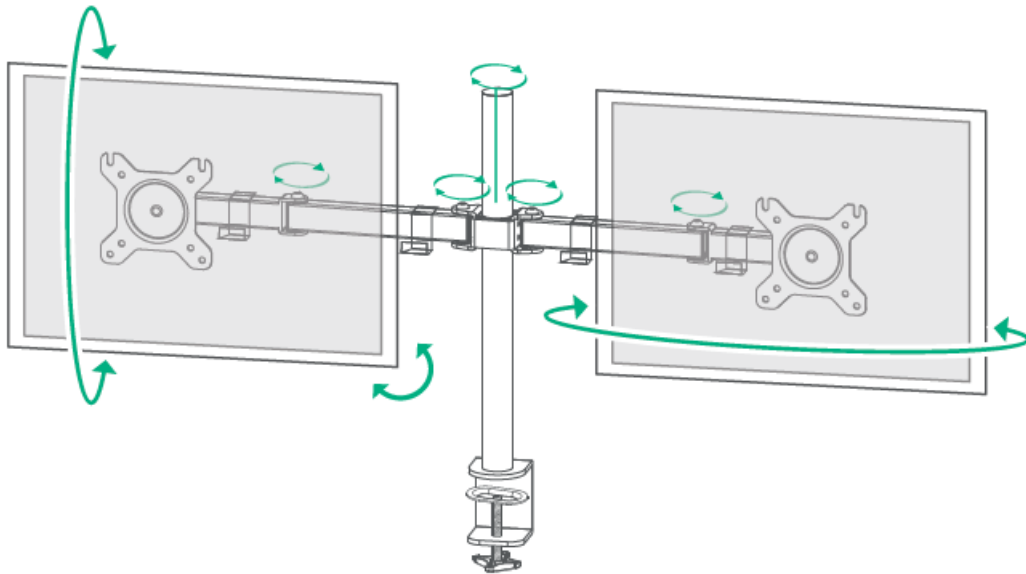


This bracket can handle monitors that weigh 8kg each or less!

Adjust to your space

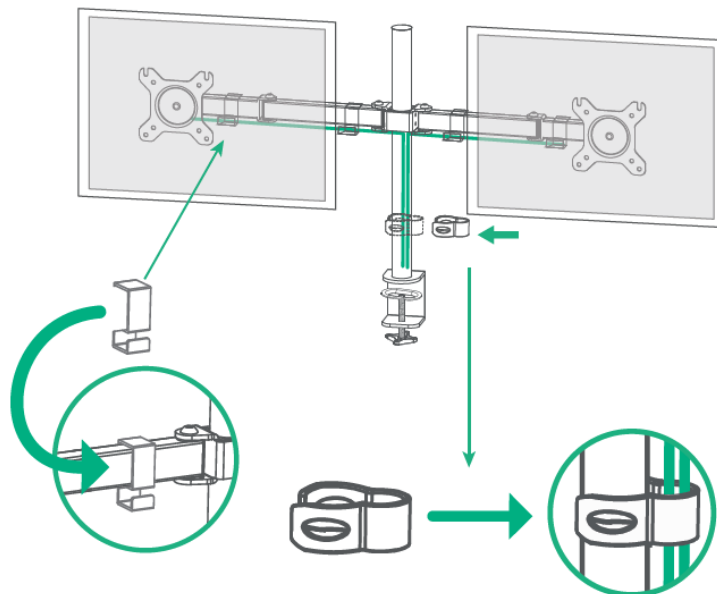
It's important to make your workspace as ergonomic as possible. This bracket allows you to adjust the height, tilt and swivel of your monitor's position, so that it's truly fitted to your space and sitting.

To lock in your adjusted position, you will need to tighten the bolts on the mounting plate and arms using the supplied 5mm hex key.



Hide those cables

You can tuck away those unsightly cables into the bracket arm itself. Put the cables through the pole cable clip and monitor arm cable clips as shown in the diagram.



Give us a call

What? You mean this Installation Guide didn't have ALL the answers? Speak to us! We'd love to help you get up and running as quickly as possible. Call our After Sales Support on 1300 002 534.
Operating hours: Monday-Friday, 8:30am-6pm; Saturday, 9am-6pm AEST

Your new Monitor Bracket is ready to enjoy

Well done, you made it. Now sit back and relax... your new monitor bracket is automatically covered by a 1-year warranty.

How nice!

