

BAUHN®
Dual Wireless Charging Clock



BAUHN ADWC-0623 Desktop Charging Stand User Guide

[Home](#) » [BAUHN](#) » BAUHN ADWC-0623 Desktop Charging Stand User Guide 

Contents

- 1 [BAUHN ADWC-0623 Desktop Charging Stand](#)
- 2 [Product Information](#)
- 3 [Product Usage Instructions](#)
- 4 [Have you got everything?](#)
- 5 [Product Overview](#)
- 6 [Troubleshooting](#)
- 7 [Give us a call](#)
- 8 [Specifications](#)
- 9 [General Safety Warnings](#)
- 10 [Documents / Resources](#)
- 11 [Related Posts](#)



BAUHN ADWC-0623 Desktop Charging Stand



Product Information

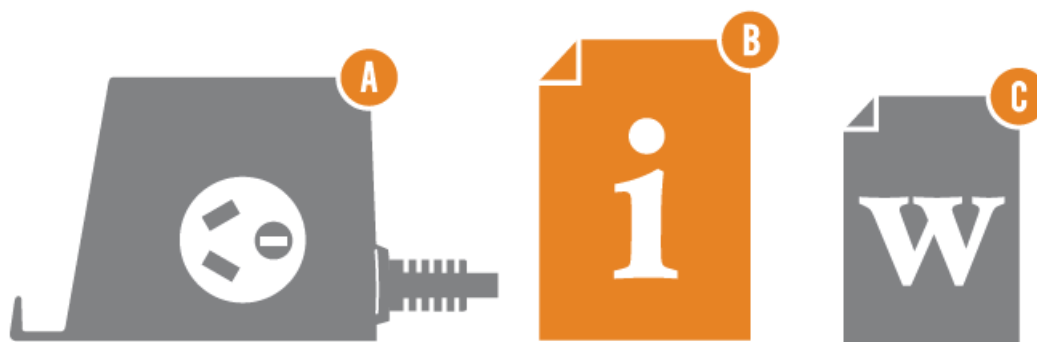
The ADWC-0623 Desktop Charging Stand is a charging device that can charge phones, tablets, and other devices. It has USB-C and USB-A charging ports, dual AC sockets, and a built-in phone cradle that supports wireless charging. The device also has a wireless charge LED indicator that lights up green when ready to charge and red when charging. It comes with a user guide and a warranty certificate.

The device complies with the Australian Safety standard AS/NZS 3105 to ensure safety. It has an input max power load of AC 100-240V, 50/60Hz, and an output of up to 10W for wireless charging. The USB-A output is 5V DC, 2A Max, while the USB-C output is also 5V DC, 2A Max. The USB-A + USB-C output is DC 5V, 3.4A Max. The product weighs approximately 400g and has dimensions of 92 x 71 x 99 mm.

Product Usage Instructions

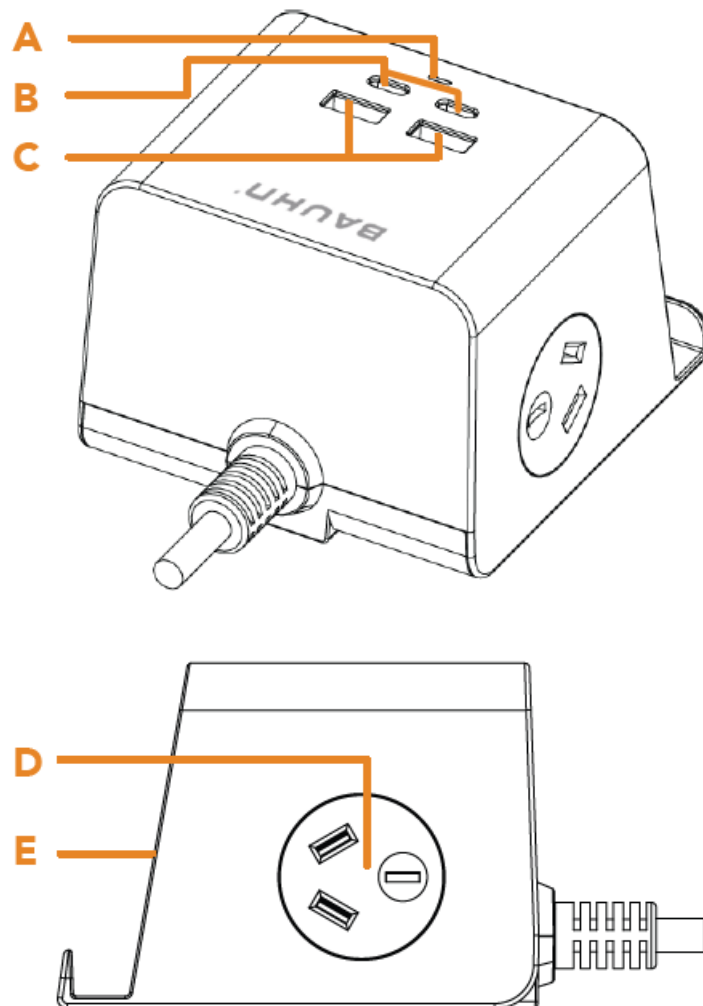
1. Place the ADWC-0623 Desktop Charging Stand on a flat surface near a power outlet.
2. Connect the device to the power outlet using the provided power cable.
3. To charge a device using the USB-C or USB-A ports, connect the device's charging cable to the appropriate port on the charging stand.
4. To charge a phone wirelessly, place it on the built-in phone cradle. If the phone is successfully charging wirelessly, the wireless charge LED indicator will light up red.
5. If you encounter any issues while using the charging stand, refer to the troubleshooting section of the user guide or contact the After Sales Support team using the provided phone number.
6. To clean the charging stand, use a soft, dry cloth. Do not use a damp cloth or any chemicals to clean the device. Wipe off any moisture, dirt, or dust on the power sockets and plug pins with a clean, dry cloth.
7. When disposing of the product or its packaging, follow the responsible disposal guidelines provided in the user manual.

Have you got everything?



- A. Desktop Charging Stand
- B. User Guide
- C. Warranty Certificate

Product Overview



- **Wireless Charge LED Indicator**

Lights up green when ready to charge. Lights up red when charging.

- **USB-C Charging Ports**

For charging devices that support USB-C.

- **USB-A Charging Ports**

For charging phones, tablets or other devices.

- **AC Sockets**

Dual sockets are the same sockets and can be used interchangeably.

- **10W Wireless Charger**

Place your phone on the built-in phone cradle for wireless charging. If the phone is successfully wireless charging, the wireless charge LED indicator will light up red.

Troubleshooting

- **No power output from one of the sockets**

- Try the other sockets. If the other sockets have power output, it's probably the contact of one faulty socket that is loose or not connected; avoid using that socket.

- **No power output from any of the sockets**

- Make sure the input socket for the powerboard has power output.

- **No output from the USB-A/USB-C ports**

- Check that the USB-A/USB-C cable is connected securely to the USB-A/USB-C port and/or try a

different USB-A/USB-C port.

- Remove devices using the other USB-A/USB-C ports.
- Use another USB-A/USB-C cable.

- **Wireless charger not working**

- Ensure that your phone supports wireless charge.
- Remove the phone's case.
- Check that the wireless charge LED indicator is green.
- Shift the position of the phone to the centre of the wireless charger.

Give us a call

What? You mean this User Guide didn't have ALL the answers? Speak to us! We'd love to help you get up and running as quickly as possible.

Call our After Sales Support on 1300 002 534. Operating hours: Monday-Friday, 8:30am-6pm; Saturday, 9am-6pm AEST

Enjoy using your product!

Well done, you made it.

Now sit back and relax... your product is automatically covered by a 1-year warranty. How nice!

Specifications

Input	AC 100-240V, 50/60Hz
Max. Power Load	2400W
Wireless Charger Output	10W Max.
USB-A Output	5V DC, 2A Max.
USB-C Output	5V DC, 2A Max.
USB-A + USB-C Output	DC 5V, 3.4A Max.
Mass	400g (approx.)
Dimensions (W x H x D)	92 x 71 x 99 mm

General Safety Warnings

For the safety of yourself and others, follow all instructions and take notice of all the warnings. When adhered to, these safety precautions can reduce the risk of fire, electric shock and injury.

This product complies with Australian Safety standard AS/NZS 3105 to ensure the safety of the product. This product is especially used for IT/AV devices.

The RCM is a visible indication of a product's compliance with all applicable ACMA regulatory arrangements, including all technical and record-keeping requirements.

IMPORTANT

- **Damage:** If the product or cord is damaged, contact the After Sales Support line for advice. Do not attempt to open the board or replace the cord. The cord must be replaced by appropriately qualified personnel.
- **Repair:** If the product requires repair, contact the After Sales Support line; never disassemble or modify the product or attempt to service it yourself.
- Run the power supply cord in such a way that there will be no risk of anyone pulling it inadvertently or tripping over it.
- The product is not intended for use by persons (including children) with reduced physical, sensory or mental capabilities, or lack of experience and knowledge, unless they have been given supervision or instruction by a person responsible for their safety.
- Young children should be supervised to ensure they do not play with the product. Close supervision is always necessary when any appliance is used by or near children.
- The product is not suitable for use in locations where children are likely to be present.
- The product is designed for indoor use in dry places only.
- Do not exceed a maximum loading of 2400 watts.
- For safety reasons, always use earth connections.
- Only use the product with the power supply cord fully unwound.
- Before installing the product, make sure to place it away from: heat sources, radiators or other products that produce heat; areas with high temperatures, high humidity or direct sunlight; excess dirt and dust; open windows and any place where water may get to the unit.
- Do not immerse the cord, plug or the product in water or other liquid, or expose the electrical connections to water or other liquid.
- Unpack the product and keep the original packaging carton and materials in a safe place. It will help prevent any damage if the product needs to be transported in the future, and you can use it to store the product when it is not in use.
- The product should always be repacked in its original packaging whenever transporting to prevent any possible damage to the product.
- When not in use: Disconnect from the power source and store in a cool, dry and well ventilated location out of direct sunlight, and not subject to humidity.
- **Warning:** The socket outlet should be located near the equipment and should be easily accessible.

Responsible disposal of the product

At the end of its working life, do not throw this product out with your household rubbish. An environmentally friendly method of disposal will ensure that valuable raw materials can be recycled. Contact your local authority for your nearest recycling centre. Electrical and electronic items contain materials and substances which, if handled or disposed of incorrectly, could potentially be hazardous to the environment and human health.

Responsible disposal of the packaging

The packaging of the product has been selected from environmentally friendly materials and can usually be recycled. Please ensure these are disposed of correctly. Plastic wrapping can be a suffocation hazard for babies and young children, please ensure all packaging materials are out of reach and are safely disposed of. Please ensure they are offered for recycling rather than throwing these materials away.

Cleaning the product

Only use a soft, dry cloth for cleaning the product; do not use a damp cloth. Never clean with industrial strength polish, wax, benzene, paint thinner, air freshener, lubricant, detergent or other chemicals. Wipe off any moisture,

GENERAL SAFETY WARNINGS

Documents / Resources

