



Contents [[hide](#)]

1 BATA 1 OPERATING MANUAL

1.1 ABOUT THE BATA 1

1.2 BEFORE YOU BEGIN

1.3 What's Included

1.4 GUIDELINES FOR THE SAFE ENJOYMENT OF YOUR PITCHING MACHINE

1.5 UNBOXING THE PITCHING MACHINE

1.6 OPERATING INSTRUCTIONS

1.7 MAINTENANCE

1.8 SPECIFICATIONS

1.8.1 Power Sources

1.9 GAP SELECTION

1.9.1 Tools Required:

1.9.2 GAP Size

1.9.3 GAP Measurement (Approximate):

1.10 MEASURING THE GAP WITH WORN WHEELS

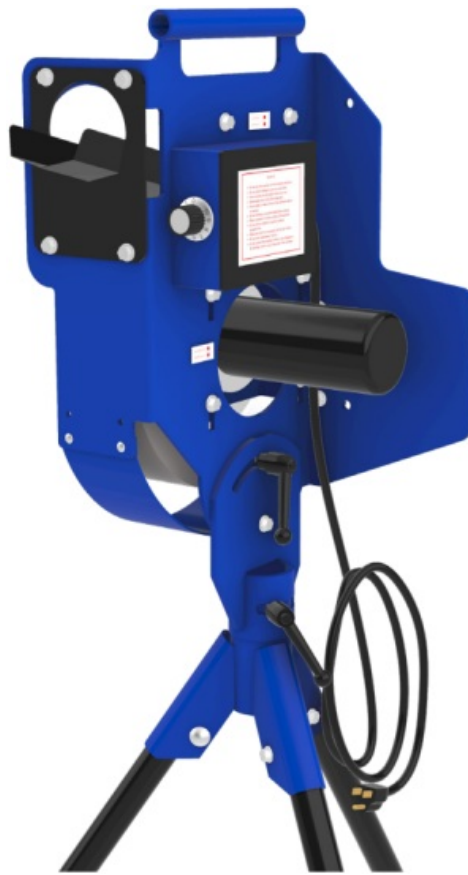
1.11 WHEEL POSITION

1.12 TROUBLESHOOTING

2 Documents / Resources

2.1 References

BATA 1 OPERATING MANUAL



ABOUT THE BATA 1

Our economical BATA-1 Pitching Machine throws fastballs and pop flies up to 62 mph with pinpoint accuracy. Ideal for batting practice. It is made in the USA and has a 10 year limited warranty!

NOTE:

If you purchased your BATA Machine through a dealer, please contact the dealer with any issues you are having. If you purchased it directly from us, please contact us [800-762-2282](tel:800-762-2282)

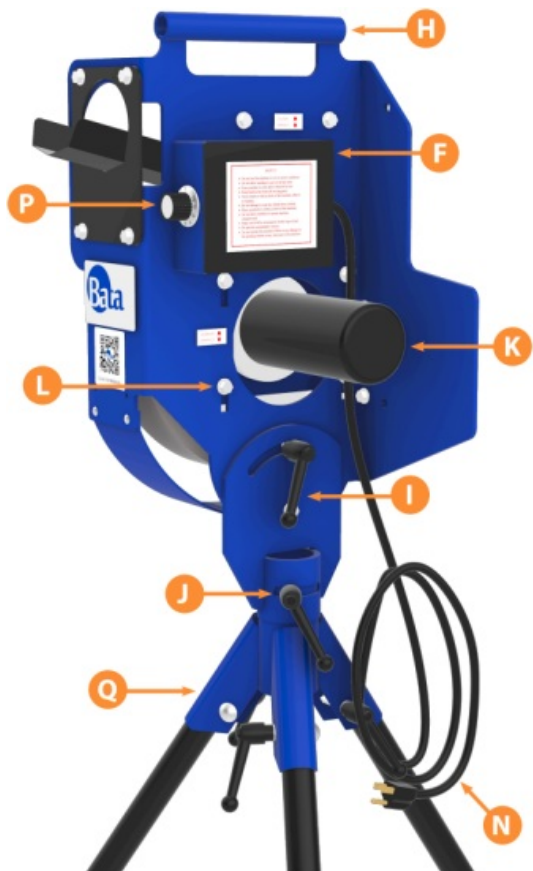
BEFORE YOU BEGIN

Read these instructions fully before starting the assembly process or use the machine. Please make sure you have all of your parts and pieces. If not, contact our customer service.

BACK VIEW



SIDE VIEW



BASEBALL LEGS

SOFTBALL LEGS



What's Included

- (A) Baseball Chute (if purchased)
- (B) Baseball Legs x3 (if purchased)
- (C) Softball Chute (if purchased)
- (D) Softball Legs x3 (if purchased)
- (E) Compression Friction Pad
- (F) Control Box
- (G) Fender
- (H) Handle
- (I) Height Adjustment Handle
- (J) Lateral Adjustment Handle
- (K) Motor
- (L) Motor Mount Bolts
- (M) Pitching Machine Wheel
- (N) Power Cord
- (O) Rubber Leg Tips x3
- (P) Speed Control Dial Knob
- (Q) Tripod Base

GUIDELINES FOR THE SAFE ENJOYMENT OF YOUR PITCHING MACHINE

Hitting with a pitching machine involves a degree of risk; here are our suggestions to

minimize that risk:

- 1) Never use this machine in wet or moist conditions.
- 2) **DO NOT** use the machine in temperatures less than 40°F or more than 100°F
- 3) Never stand or walk in front of the machine while it is running.
- 4) Wear eye protection while manually feeding.
- 5) Keep hands away from all moving parts.
- 6) Wear a batting helmet when batting.
- 7) DO NOT attempt to stop the wheel from rotating or touch anything to the wheels even after turning off the machine.
- 8) Place a protective screen in front of the machine to protect the machine and operator. The warranty does not cover damage from batted balls.
- 9) If any unusual or loud noises occur with the machine, disconnect the power immediately and discontinue use until the cause can be resolved. Contact Bata customer service: [800-762-2282](tel:800-762-2282).
- 10) Turn the machine OFF and wait for the wheel to stop rotating before making adjustments to the machine (other than speed and location).

WARNING:

This machine is **NOT** guaranteed to be 100% accurate. Although each machine is thoroughly inspected and tested before leaving the factory, occasional errant pitches may occur (and should be expected). This can be due to balls in poor condition, moisture or debris, careless/negligent use, improper settings, improper maintenance, mechanical failure, or other factors.

Expect to have to react to errant pitches in the same way you would if you were batting off a real pitcher. It is important to make sure that all safety precautions are taken, and to instruct all participants on proper operating procedures and rules prior to use. It is your responsibility to make sure that your machine is maintained in proper operating condition.

UNBOXING THE PITCHING MACHINE

How to unbox and set up your pitching machine for the first time.

- 1) Remove the machine from the box. Lift the machine out of the box and set it to rest on the front guard of the machine that is connected to the fender.
- 2) If you ordered the Quick Release Leg Lock Kit with the machine, it has been factory installed. Slide each of the straight baseball legs or bent softball legs into the tripod base and secure them with the nuts and bolts provided or Quick Release Leg Lock Kit. Hold each leg with your hand as you tighten the nut. Tighten the nut or QRL handle until the leg will not rotate.
- 3) If you ordered the Transport Wheel Kit, you may install it now. Refer to the transport kit instructions (found on the website).
- 4) If you ordered a baseball only machine, it is factory set for baseball. If you ordered a softball only machine, it is factory set for softball. If you ordered a combo (baseball & softball) machine, it is factory set for baseball unless otherwise specified.

OPERATING INSTRUCTIONS

Before using your machine, perform the following routine checks to ensure optimal performance.

- 1) Is the machine set to the right GAP?
- 2) Is the proper feed chute installed?
- 3) Is the wheel in the proper position on the motor shaft?
- 4) Are the motor cords connected properly at the plug connection?
- 5) Are there any loose nuts and bolts?
- 6) Are the balls dry and in good condition?
- 7) Do you have the proper power source? (see specifications)
- 8) Are you using a surge protector?

NOTE:

There is a **break-in period** for the wheels. You need to pitch 100 balls or more before the rubber is adequately scuffed up. Do not pitch to batters or expect the machine to pitch accurately until the wheels are broken in.

How to use the Bata 1 pitching machine.

- 1) Place the machine in the pitching area. Visually aim it in the direction of home plate.

- 2) Choose the power source. Before plugging the machine into the power source, make sure that the speed control dial knob is in the OFF position. Plug a surge protector into the power source.
- 3) Start the machine by turning the speed control dial knob clockwise and set it at the chosen speed. (see speed control). Allow the wheel to get up to speed before pitching the first ball.
- 4) Do not allow anyone to stand near home plate yet.
- 5) Feed one ball into the feed chute.
- 6) Adjust the location up, down, inside, or outside as needed.
 - a) To adjust the height, loosen the height adjustment lock handle about 1/4 turn and rotate the head of the machine up or down to change the location. Lock the handle.
 - b) To adjust the inside/outside location, loosen the lateral adjustment lock handle about 1/4 turn and rotate the head of the machine side to side to change the location. Lock the handle.
- 7) After setting the location, pitch at least 10 balls to check the location before allowing batters to step in.

NOTE:

There will be some variation from pitch to pitch due to the balls themselves. Do not adjust the location pitch to pitch unless it is off by a significant amount.

MAINTENANCE

How to maintain your Bata pitching machine.

- 1) **DO NOT** use the machine in temperatures less than 40°F or more than 100°F. Extreme temperatures will affect the rubber tread on the pitching wheels and the motors.
- 2) Store the machine in a clean, dry place. If you choose to leave your machine outside in your batting cage, just make sure that it is covered well enough to keep it dry.
- 3) Keep the pitching wheels clean, dry, and free of debris. Residue from balls does not need to be removed unless it is affecting the pitching. If you do need to clean the rubber surface of the wheels, do not use any chemicals. Instead, use 60 grit sandpaper at a diagonal direction. DO NOT sand while the machine is running.
- 4) After a prolonged period of non-use, the rubber on the pitching wheels will become oxidized, making the rubber slick. This will affect the wheels ability to grip the ball and

pitch it properly. You may need to scuff the rubber to get it back to a fresh rubber surface. Once the rubber scuffed, regular use will prevent oxidation.

5) Check the GAP between the pitching wheels. It is extremely important that the GAP is adjusted properly for each type of ball (See GAP SELECTION).

SPECIFICATIONS

Information about your Bata pitching machine.

Power Sources

Standard Outlet: 110 – 120 volt AC

Generator: 110 – 120 volt AC output, 400 watts per motor minimum

Extension Cords:

Length (ft)	Gage (minimum)
25' or less	16
50'	14
100'	12
150'	10
200'	8

GAP SELECTION

Important information about the gap between the wheel and friction pad.

The term “GAP” refers to the space between the pitching wheel and the Compression Pad. This machine will throw different types and sizes of balls. However, a different GAP is required for each. For example, a softball requires a larger GAP than a baseball. **It is not necessary to change the GAP very often, if at all, unless you plan to use different types of balls.**

For example, if you are going to pitch only leather baseballs, you can leave the GAP at the factory setting. If you are going to pitch baseballs and softballs, you will need to

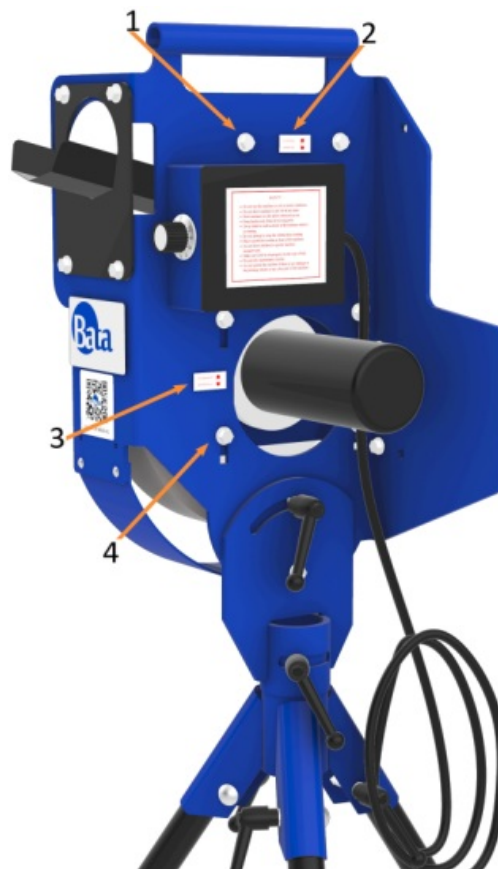
change the GAP accordingly for each type of ball.

Tools Required:

- 1/2" Socket OR Box End Wrench

The two bolts for the compression plate are elongated to allow 2/10" of adjustment. As indicated, the upper end of the slots set the machine for LEATHER balls. The lower end of the slots set it for DIMPLED balls.

The four slots for the motor mount bolts are elongated to allow an inch of adjustment. As indicated, the upper end of the motor mount slots set the machine to BASEBALL mode. The lower end of the slots set it to SOFTBALL mode.



1. Compression Plate Bolts
2. Leather/Dimpled
3. Baseball/Softball
4. Motor Mount Bolts

When pitching at faster speeds, or when using softer balls, adjustment may be required.

NOTE: The Compression Plate **MUST** be set in the **LEATHER** position when pitching real leather balls, for either baseball or softball. Pitching leather balls with it in the **DIMPLED** position will damage the machine.

To change the motor mount setting, using a wrench, loosen all four motor mount nuts just enough to allow the motor mount to slide, and position it as needed. Tighten the nuts to secure it. The compression plate setting also uses a 1/2" wrench.

Keep your operating manual for future reference. If, at some point, the pitching wheels have worn significantly you may experience inconsistent or errant pitching. The following information may help you trouble-shoot.

GAP Size

If the GAP is too large, the wheels will not grip the ball tightly enough to pitch it accurately and consistently. This results in pitches that sometimes fall short of the plate and/or miss the strike zone. We recommend closing the GAP about 1/16" at a time until you get consistent pitching. Once you have determined the ideal GAP to match your dimpled balls, make a note of it. When the wheels wear, you may need to re-adjust the GAP.

If the GAP is too small It will cause erratic pitching. There are many different brands of dimpled balls on the market, and they are **NOT** all the same. Our machines are designed and calibrated to pitch dimpled balls and regulation leather balls. The gap can be adjusted to accommodate other varieties of balls, but we cannot guarantee that our machines will pitch them properly. Your best bet is to use balls that are proven to provide quality results. Dimpled balls and low seam balls pitch consistently in BATA machines. Double-check your setting.

GAP Measurement (Approximate):

- Dimpled Baseball: 2-1/8"
- Leather Baseball: 2-5/16"
- Dimpled Softball: 3"
- Leather Softball: 3-3/16"

You may also pitch 11" softballs in your machine. You can pitch 11" softballs at the 12" softball setting up to about 40 mph. If you want to pitch 11" softballs faster than 40 mph, you may need to reduce the GAP using the DIMPLED SOFTBALL setting. DO NOT PITCH 12" SOFTBALLS WITH THE GAP AT THIS WIDTH. It will damage the motors.

NOTE: The feed chute and legs must also be changed if switching from baseball to softball or vice versa.

WARNING: Failure to set the gap properly may damage the machine.

MEASURING THE GAP WITH WORN WHEELS

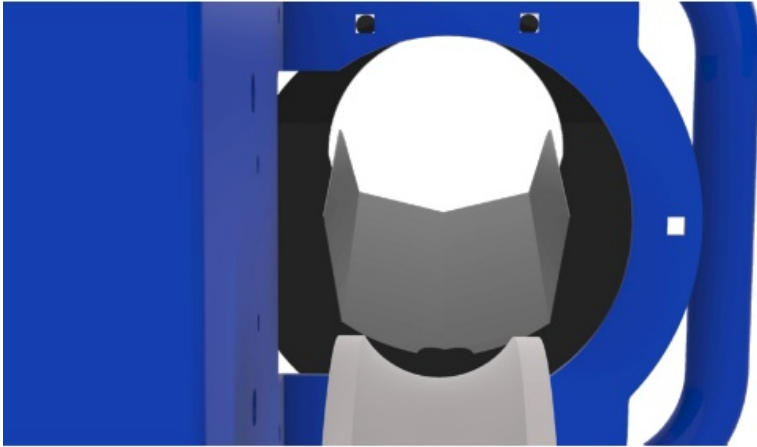
Important information about the gap between the wheel and friction pad when the wheels are worn.

After a lot of use, you will notice a "concave dip" being worn into the rubber on the wheel. This is normal wear and tear. As the dip becomes deeper, the GAP becomes larger. There may come a time when you will need to make adjustments to the machine to shorten the GAP. How much can the wheel wear before you have to adjust the GAP? That depends on how fast you're pitching the ball. At lower speeds, a wider GAP will still work. At higher speeds, too large of a GAP will allow inconsistent pitching.



To measure the GAP, take a ruler or tape measure and measure from the edge of the wheel to the compression pad at the closest point. When the wheel is new, this measurement will be about 2-5/16" (with the GAP at the factory baseball setting), or 3-3/16" (at the factory softball setting). When the wheel is worn, you must do a calculation to determine the ideal GAP. The ideal GAP will be the average between the

measurement at the edge of the wheel and the bottom of the concave dip.

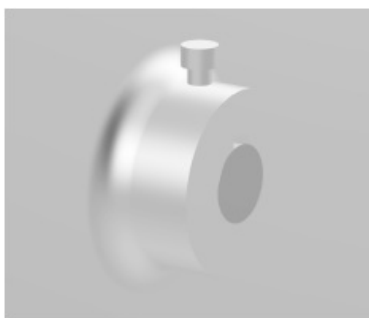


For example, if the wheel has $\frac{3}{8}$ " of wear, divide the total wear ($\frac{3}{8}$ ") by 2, that gives you $\frac{3}{16}$ ". So, you would need to reduce the GAP by a total of $\frac{3}{16}$ ".

WHEEL POSITION

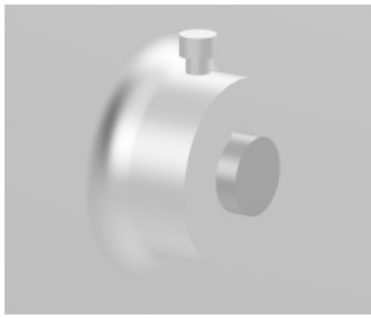
Important information about the position of the wheel on the motor shaft.

Occasionally you will need to check the position of the wheels on the motor shaft. This is very important for two reasons. First, the wheel must be positioned properly so that it is centered to the feed chute. Second, if the wheel is not properly positioned, the hub of the wheel may rub against the motor bolts, which can cause damage to the machine.



Correct Position

To correct it, using a $\frac{3}{16}$ " Allen wrench, loosen (do not remove) the set screw about $\frac{1}{2}$ turn. Slide the wheel back to the proper position with about $\frac{1}{32}$ " $\frac{1}{16}$ " of the end of the motor shaft sticking out past the outside of the wheel hub and tighten the set screw. It threads into aluminum, so be careful not to over-tighten or strip the threads.



Incorrect Position

TROUBLESHOOTING

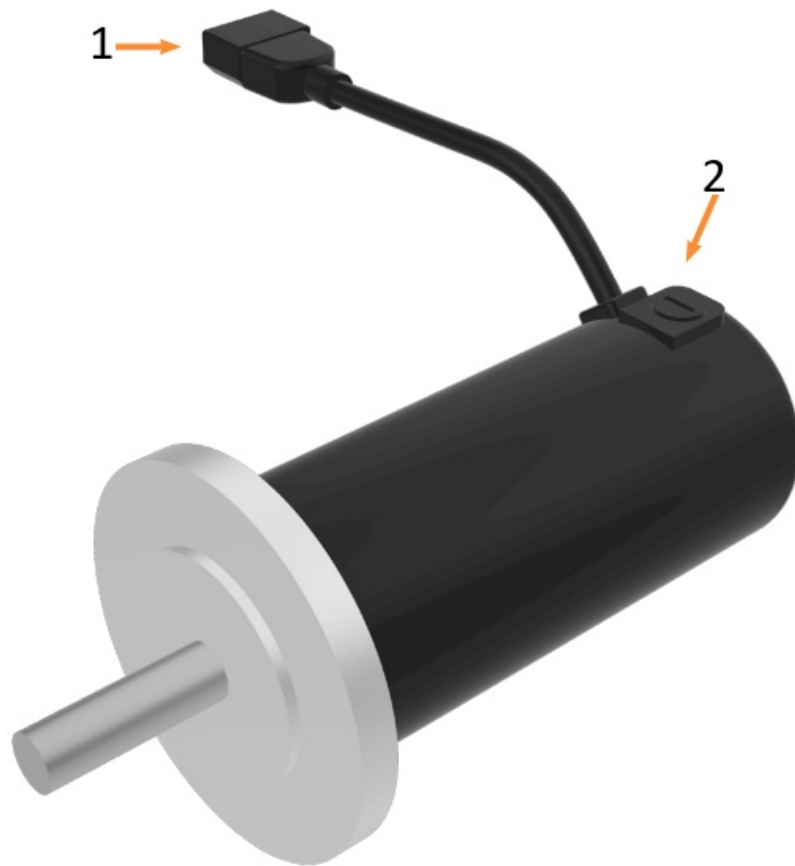
Having an issue with your machine? Read through these questions and answers. If the machine is still not fixed please contact Bata [800-762-2282](tel:800-762-2282) or sales@batabaseball.com.

PROBLEM 1: Motor will not turn on.

SOLUTION 1: Check to make sure the plug connection (2010 machines and later) between the motor and speed control box is properly connected.

SOLUTION 2: Check the motor brushes.

The brushes are not actually brushes at all. They are an assembly consisting of a small metal tab, connected to a small rectangular piece of carbon via a spring and thin cable. The spring is supposed to feed the carbon “brush” into the part of the motor that is turning inside. This gives it electrical connection. If the carbon block does not feed easily into the armature, the circuit is interrupted. This may be caused by the carbon block hanging up in the socket, which may be caused by friction.



1. Plug/Cord Connection

2. Brush Compartment

To check the brushes, first unscrew the small cap that has the screwdriver slot. The first thing you will see is the metal tab. Using a very small screwdriver, lift the metal tab up until you can get it to pop up enough to get your fingers on it. Pull the brush assembly out of the socket by the metal tab.

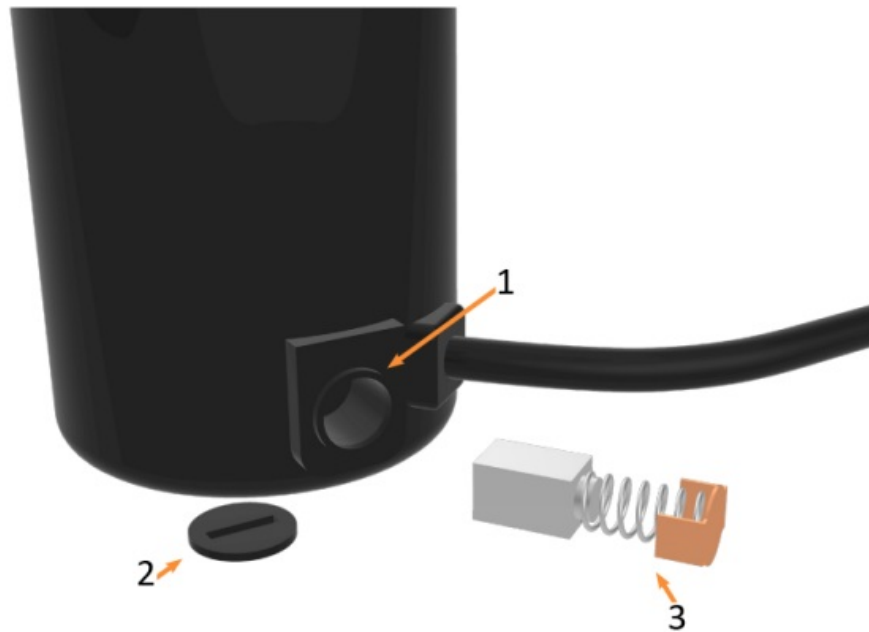
The assembly should slide in and out of the socket easily. If there is any friction, this would cause the carbon block to not feed in properly. In this case, the easiest solution is to very lightly sand the side of the carbon block with very fine sandpaper (400 grit).

Lay the sandpaper down on a flat surface and lightly drag the carbon block over it one time. Check the fit. Repeat if necessary.

When the brush assembly is out, check to make sure the spring and cable are not broken. If they are, the brush needs to be replaced.

Replace the brush assembly. Slide it into the socket, push down on the metal tab, compressing the spring, until the metal tab sits down into the socket. Install the cap. Be

careful when tightening the cap. It is thin and fragile.



1. Brush Compartment
2. Cap
3. Brush

SOLUTION 3: Remove the cover of the speed control box and check the connections.

Gently tug on each wire connection to make sure that there are no loose wires. Gently wiggle each connection on the circuit board to see if any of the soldered connectors have broken loose from the circuit board. If so, the circuit board needs to be replaced.

SOLUTION 4: Check the HP resistor.

For machines (2023 and newer) check to make sure the solder points are intact. If they are not intact you will need a new circuit box. The HP resistor actually plugs into the circuit board into two tiny sockets. Sometimes the resistor can get knocked loose or out of the sockets completely. If it is out of the sockets, push it back in. Get it started with your fingers and push down on each end of the resistor where the wires are soldered. Do a little on each end at a time until it is all the way in. Check very closely to see if the small wires that come out of each end of the resistor are intact or broken. If they are broken, or if the block is broken, the HP resistor needs to be replaced.

SOLUTION 5: Check for burned areas on the circuit board assembly.

If there is any burned areas, it is likely that your speed controller was damaged by a power surge. In this case, the control box needs to be replaced.

NOTE: You can avoid power surge damage by using a Surge Protector.

SOLUTION 6: Check for water damage.

If your machine got wet, it may be that your circuit has water damage. Sometimes you can blow the moisture out with an air hose, and it will dry out enough to work again, sometimes not. If there is water damage, it probably means that you will need to replace the control box.

PROBLEM 2: Motor speed fluctuates or runs full speed all the time


SOLUTION 1: Most likely a circuit board malfunction.

PROBLEM 3: Wheel stopped rotating or is making a grinding noise.

SOLUTION 1: Check the position of the wheel on the motor shaft (see page 9)

[800-762-2282](tel:800-762-2282) | sales@batabaseball.com

Documents / Resources

	bata baseball BATA-1 Pitching Machine [pdf] Instruction Manual BATA 1, BATA-1 Pitching Machine, BATA-1, Pitching Machine, Machine
---	--

References

- [User Manual](#)

📁 bata
baseball

📎 BATA 1, bata baseball, BATA-1 Pitching Machine, Machine, Pitching
Machine

—

Leave a comment

Your email address will not be published. Required fields are marked *

Comment *

Name

Email

Website

☐ Save my name, email, and website in this browser for the next time I comment.

Post Comment

Search:

e.g. whirlpool wrf535swhz

Search

[Manuals+](#) | [Upload](#) | [Deep Search](#) | [Privacy Policy](#) | [@manuals.plus](#) | [YouTube](#)

This website is an independent publication and is neither affiliated with nor endorsed by any of the trademark owners. The "Bluetooth®" word mark and logos are registered trademarks owned by Bluetooth SIG, Inc. The "Wi-Fi®" word mark and logos are registered trademarks owned by the Wi-Fi Alliance. Any use of these marks on this website does not imply any affiliation with or endorsement.