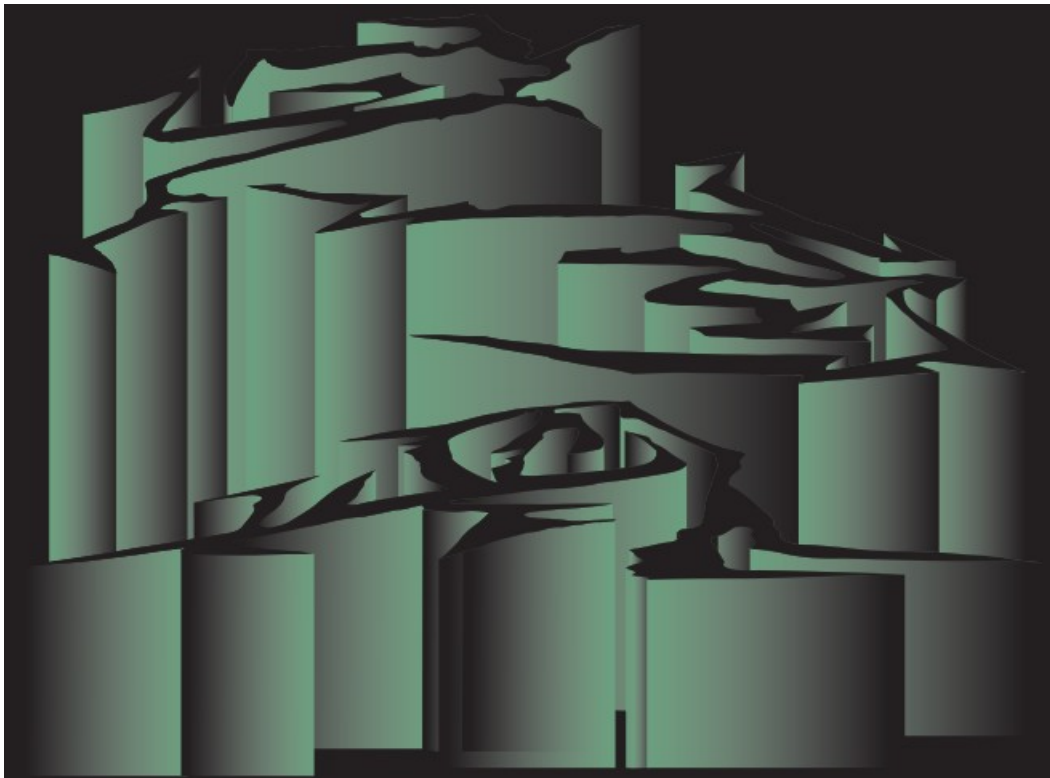


BASTL Soffpop Sp II Portable Experimental Analog Synth Instruction Manual

[Home](#) » [BASTL](#) » BASTL Soffpop Sp II Portable Experimental Analog Synth Instruction Manual 

BASTL

SOFTPOP SP II



Contents

1 INTRODUCTION

2 SEQUENCER

3 OSCILLATOR

4 FILTER

5 ENVELOPE

6 SEQUENCER

INTRODUCTION

7 BUTTON COMBOS

8 Documents / Resources

8.1 References

9 Related Posts

INTRODUCTION

FIG. 01

0. Connect USB power, flip POWER switch UP and connect headphones or speaker to the OUTPUT
1. Put all controls into the indicated position to start
2. Start playing with PITCH and CUTOFF
3. Bring PITCH MOD and CUTOFF MOD faders UP to modulate them
4. Use the envelope RATE and SHAPE to change the modulation
5. Explore the RESONANCE and POP faders along with the filter mode HP/BP/LP switch

SEQUENCER

is the digital brain of the softPop2 and will make it sound musical in no time.

OSCILLATOR

is your source of tonality.

Left fader is the PITCH of the oscillator.

SCALE selects the semi-tones used. Hold SCALE and press one of the 8 GATE buttons to select a scale.

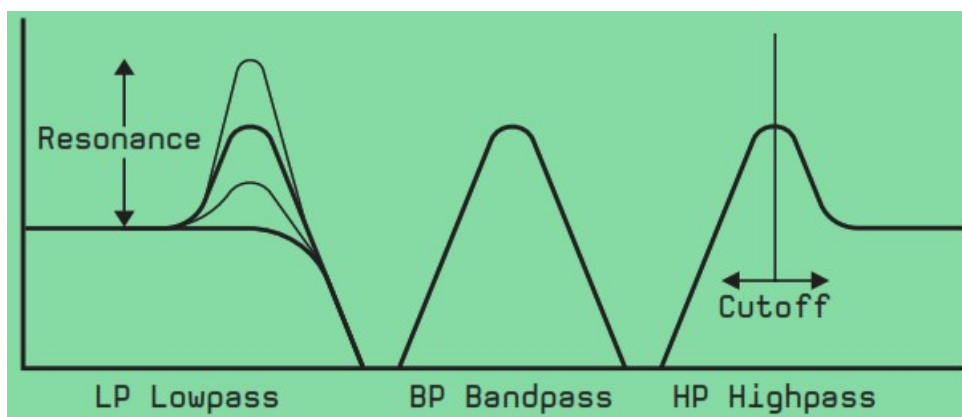
Right fader is the PITCH MOD. It adds pitch modulation which is randomized each time the envelope is triggered.

FINE-TUNE adjusts the tuning. Keep it to the right.

FILTER

shapes the color/timbre of your sound by cutting the sound spectrum at the CUTOFF frequency.

Left fader is the CUTOFF frequency.



The HP/BP/LP switch selects the filter type.

HP=Highpass: passes frequencies above cutoff (cuts bass)

BP=Bandpass: passes frequencies around cutoff (cuts bass and treble)

LP=Lowpass: passes frequencies below cutoff (cuts treble)

Right fader is CUTOFF MOD: how much the envelope affects the cutoff frequency.

RESONANCE makes the filter self-oscillate and emphasize frequencies around the cutoff frequency.

POP increases the cross modulation between the oscillator and filter, resulting in a harsher sound to the right.

Keep left for softer sounds.

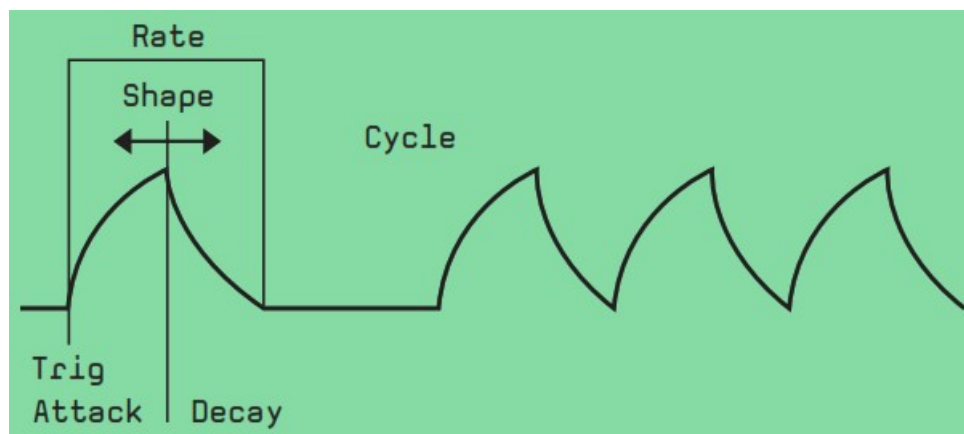
ENVELOPE

shapes the character of your sound in time.

RATE controls the speed of the envelope.

SHAPE adjusts the proportion between the attack and decay phase of the envelope.

CYCLE makes the envelope oscillate like an LFO.

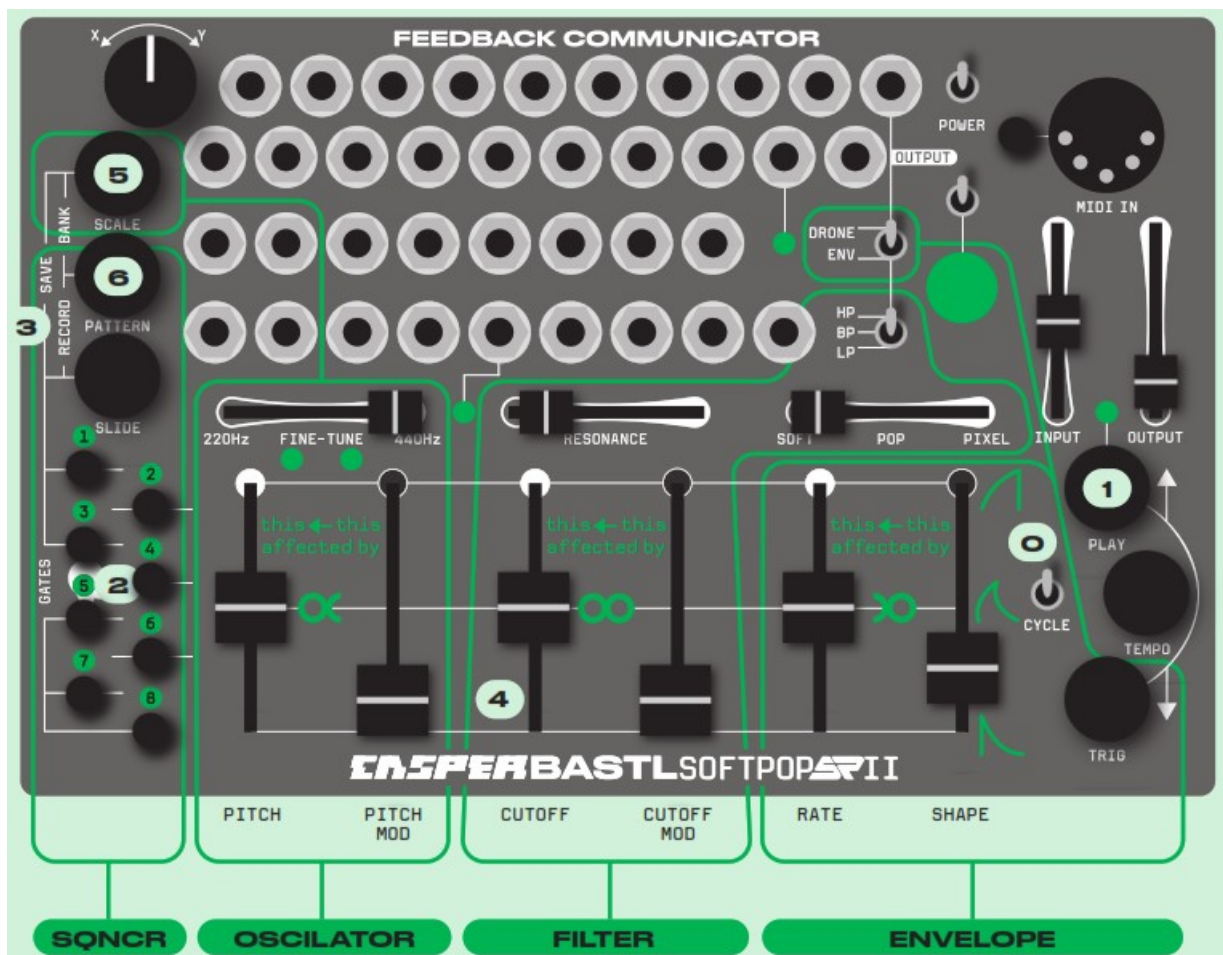


TRIG will trigger the envelope once.

The DRONE/ENV switch lets you select between DRONE (sound always on) or ENV (volume increases with the envelope).

FIG. 01

FIG. 02

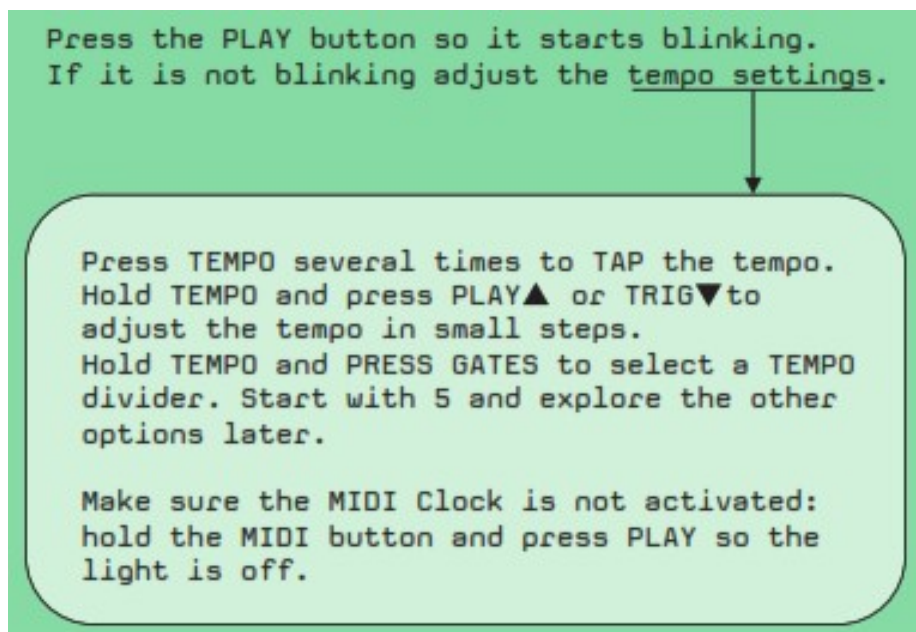


SEQUENCER INTRODUCTION

FIG. 02

0. To start, set the CYCLE switch of the envelope to the lower position (off).

1.



2. Press the GATE buttons to select when the envelope is triggered. Flip the DRONE/ENV switch or pull the CUTOFF MOD fader to hear the effect of the envelope.

3. To RECORD a melody:

a) hold down PATTERN+SLIDE to RECORD

- b) move the PITCH FADER to RECORD (keep the PITCH MOD fader down for start)
- c) release PATTERN+SLIDE buttons to hear your melody.
4. Bring up PITCH MOD to apply randomness to your melody.
5. Hold SCALE and press GATE to select a scale. Press multiple GATES to chain scales.
6. Hold PATTERN and press GATE to select and repeat from step 2.
7. When you have more patterns, let's make them play one after another. Hold PATTERN and press several GATES to chain the patterns.
8. Press SLIDE + SCALE to SAVE all your music for the next time you turn on the softPop2.



QUICK START

TUNE THE SOFTPOP BY HOLDING SLIDE+MIDI BUTTONS FOR 2 SECONDS.

Keep the FINE-TUNE fader all the way to the right to be in tune with most other instruments.

Softpop SP2 has a fully analog signal path. The oscillator tuning can be sensitive to various conditions. We recommend tuning it a few minutes after powerup and when necessary.

Pressing SLIDE+MIDI for less than 2 seconds will not tune all the octaves but only quickly fix potential pitch drift.



WWW.BASTL-INSTRUMENTS.COM

BUTTON COMBOS

BASICS

PLAY= ▲ and TRIG=▼ when used with other buttons

GATE=press any one gate

GATES=press multiple gates one after another while still holding the context button

PATTERN+SLIDE=RECORD pitch sequence

SLIDE+MIDI=fix oscillator pitch drift

SLIDE+MIDI >2s=full automatic tuning in all octaves

SCALE+SLIDE=SAVE bank

SCALE+PATTERN+GATE=LOAD bank

SCALE+GATE=select a scale

SCALE+GATES=chain scales

SCALE+ ▲/▼ =select a semitone

SCALE+TEMPO=semitone on/off (indicated by PLAY LED and GATE 1)

SCALE+TEMPO+ ▲/▼ =transpose whole scale by one semitone

SCALE+MIDI=copy MIDI defined scale to currently edited scale

MIDI

MIDI >5s=MIDI learn

MIDI+GATE=set MIDI channel to 1 to 8

MIDI+ selected GATE=set MIDI channel to 8+1 to 8

MIDI+PLAY=activate/deactivate MIDI clock

MIDI+SCALE=activate/deactivate MIDI scale mode

MIDI+PATTERN=activate/deactivate CV Out generating Velocity CV

FIRMWARE UPDATE

Hold MIDI at startup and play wav file into Reset input.

SEQUENCER

PATTERN+GATE=select a pattern

PATTERN+GATES=chain patterns

PATTERN+ ▲/▼ =shift a whole pattern by 1 step

PATTERN+TEMPO=copy currently selected pattern to the next selected pattern

SLIDE+GATE=activate/deactivate slide on that step SLIDE+ ▲/▼ =set slide rate (1=no slide)

PLAY (short)=start and stop sequencer

PLAY+GATE=select playmode

PLAY+GATES=chain playmodes

TEMPO+TEMPO=tap tempo

TEMPO+ ▲/▼ =increase/decrease tempo

TEMPO+ ▲/▼ >1s= gradually increase/decrease tempo

TEMPO+GATE=select divider/multiplier

TEMPO+ ▲+▼ =learn tempo from looping envelope

TRIG=trigger envelope

TRIG+GATE=activate temporary FX (hold several to combine)

TRIG+PLAY+GATES=record loop of temporary FX

TRIG+PLAY=erase loop of temporary FX

STEP EDIT MODE

PATTERN+SLIDE (when seq. stopped)=enter/leave step edit mode

In the step edit mode (one step is blinking):

GATE=preview and select step (always triggers envelope)

GATE+ move PITCH FADER=edit steps pitch

GATE+ ▲/▼ =transpose step in quarter tones


**EXPLORE THE UNIT AND TRY TO DECODE
ALL THE COOL THINGS YOU CAN DO WITH SOFTPOP2!**

Documents / Resources



[BASTL Soffpop Sp II Portable Experimental Analog Synth](#) [pdf] Instruction Manual
Soffpop Sp II, Portable Experimental Analog Synth, Soffpop Sp II Portable Experimental
Analog Synth, Experimental Analog Synth, Analog Synth

References

-  bit.ly/softpop2
-  [Bastl Instruments](#)

Manuals+.