



[Home](#) » [BASTL INSTRUMENTS](#) » **BASTL INSTRUMENTS SOFTPOP SP2 Oscillator Synthesizer**

Instruction Manual 



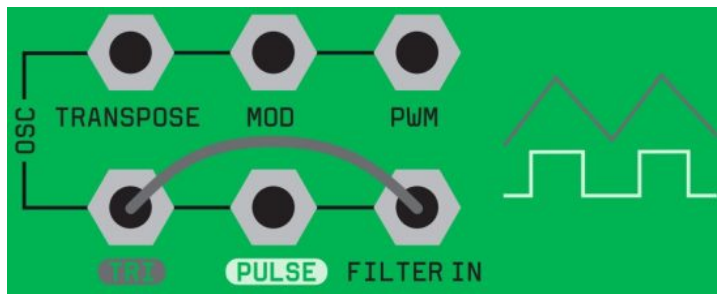
Contents [[hide](#)]

- [1 SOFTPOP SP2 Oscillator Synthesizer](#)
- [2 BUTTON COMBOS](#)
- [3 INTRODUCTION](#)
- [4 SEQUENCER](#)
- [5 OSCILLATOR](#)
- [6 FILTER](#)
- [7 ENVELOPE](#)
- [8 SEQUENCER INTRODUCTION](#)
- [9 Documents / Resources](#)
 - [9.1 References](#)

SOFTPOP SP2 Oscillator Synthesizer

THIS SOFTPOP SP2 IS RUNNING THE DIGITAL VCO FIRMWARE.

By default, the Softpop SP2 oscillator produces a PULSE wave. By patching TRI into FILTER IN, you can change the waveform.



To switch oscillator waveforms at the TRI output, hold SLIDE + MIDI and press GATE buttons 1-8.

Hold SLIDE and move the FINE TUNE fader to alter the shape of each waveform.



<https://bastl-instruments.com/content/files/softpop2-digitalvco-manual.pdf>

<ul style="list-style-type: none"> ● Fractal Triangle ● Animated Fractal Triangle ● Super Triangle ● Triangle To Noise 	<ul style="list-style-type: none"> ● 2×Fractal Triangle ● Exp Saw Detune ● Super Saw ● Glitch Radio
--	---

See the full manual here

WWW.BASTL-INSTRUMENTS.COM



Join our Community here

BUTTON COMBOS

BASICS

PLAY= ▲ and TRIG= ▼ when used with other buttons

GATE=press any one gate

GATES=press multiple gates one after another while still holding the context button

PATTERN+SLIDE+PITCH FADER = RECORD pitch sequence

PATTERN+SLIDE+TRIG = RECORD gate sequence

SLIDE+MIDI+GATE = select waveform

SLIDE+FINE TUNE = alter the wave shape of the waveform

SCALE+SLIDE=SAVE bank

SCALE+PATTERN+GATE=LOAD bank

SCALE+GATE=select a scale

SCALE+GATES=chain scales

SCALE+ ▲/▼ =select a semitone

SCALE+TEMPO=semitone on/off (indicated by PLAY LED and GATE 1)

SCALE+TEMPO+ ▲/▼ =transpose whole scale by one semitone

SCALE+MIDI=copy MIDI-defined scale to the currently edited scale

MIDI

MIDI >5s=MIDI learn

MIDI+GATE=set MIDI channel to 1 to 8

MIDI+selected GATE=set MIDI channel to 8+1 to 8

MIDI+PLAY=activate/deactivate MIDI clock

MIDI+SCALE=activate/deactivate MIDI scale mode

MIDI+PATTERN=activate/deactivate CV Out generating Velocity CV

MIDI+TRIG=activate automatic envelope triggering from MIDI Notes

FIRMWARE UPDATE

Hold MIDI at startup and play a WAV file into the Reset input.

SEQUENCER

PATTERN+GATE=select a pattern

PATTERN+GATES=chain patterns

PATTERN+ ▲/▼ =shift a whole pattern by 1 step

PATTERN+TEMPO=copy currently selected pattern to the next selected pattern

PATTERN+MIDI=activate triggered pitch mode = pitch is only updated on active gates

SLIDE+GATE=activate/deactivate the slide on that step SLIDE+ ▲/▼ =set slide rate

(1=no slide)

PLAY (short)=start and stop sequencer

PLAY+GATE=select playmode

PLAY+GATES=chain playmodes

TEMPO+TEMPO=tap tempo

TEMPO+ ▲/▼ =increase/decrease tempo

TEMPO+ ▲/▼ >1s= gradually increase/decrease tempo

TEMPO+GATE=select divider/multiplier

TEMPO+ ▲ + ▼ =learn tempo from looping envelope

TRIG=trigger envelope

TRIG+GATE=activate temporary FX (hold several to combine)

TRIG+PLAY+GATES=record loop of temporary FX

TRIG+PLAY=erase loop of temporary FX

TRIG+SLIDE=set ENV G to GATE/TRIGGER

TRIG+PATTERN=set SLIDE G to GATE/TRIGGER

DIRECT STEP EDITING

GATE+ ▲/▼ = edit step pitch

GATE+PITCH FDER = edit step pitch

GATE+TEMPO = preview step pitch

BOOT/POWER UP SETTINGS

Hold SCALE at power up=shorten the range of the PITCH fader

Hold SLIDE at power up=make FINE-TUNE fader control waveshape by default, FINE-TUNE is hidden under SLIDE+FINE-TUNE

Hold PATTERN at power up=toggle CV Pitch tracking mode for CV out

Hold SCALE+SLIDE at power up = calibration and test mode

Hold PLAY+TEMPO+TRIG at power up=factory reset



INTRODUCTION

FIG. 01

0. Connect USB power, flip the POWER switch UP, and connect headphones or a speaker to the OUTPUT
1. Put all controls into the indicated position to start
2. Start playing with PITCH and CUTOFF
3. Bring PITCH MOD and CUTOFF MOD faders UP to modulate them
4. Use the envelope RATE and SHAPE to change the modulation
5. Explore the RESONANCE and POP faders along with the filter mode HP/BP/LP switch

SEQUENCER

It is the digital brain of the softPop2 and will make it sound musical in no time.

OSCILLATOR

is your source of tonality.

Left fader is the PITCH of the oscillator.

SCALE selects the semitones used. Hold SCALE and press one of the 8 GATE buttons to select a scale.

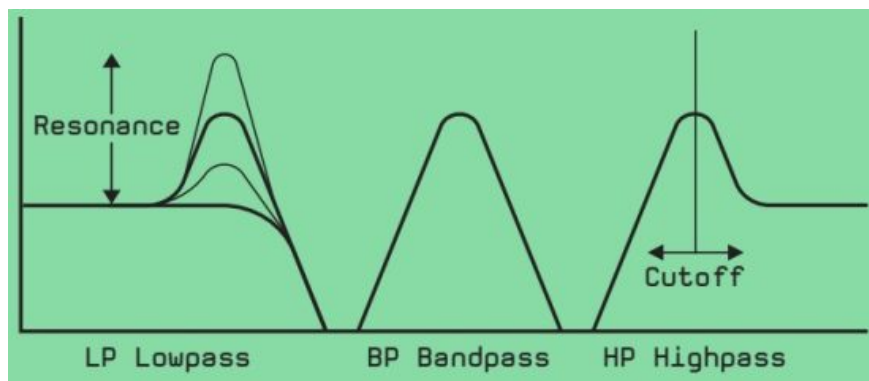
The right fader is the PITCH MOD. It adds pitch modulation, which is randomized each time the envelope is triggered.

FINE-TUNE adjusts the tuning. Keep it to the right.

FILTER

shapes the color/timbre of your sound by cutting the sound spectrum at the CUTOFF frequency.

Left fader is the CUTOFF frequency.



The HP/BP/LP switch selects the filter type.

HP=Highpass: passes frequencies above the cutoff (cuts bass)

BP=Bandpass: passes frequencies around the cutoff (cuts bass and treble)

LP=Lowpass: passes frequencies below the cutoff (cuts treble)

Right fader is CUTOFF MOD: how much the envelope affects the cutoff frequency.

RESONANCE makes the filter self-oscillate and emphasizes frequencies around the cutoff frequency.

POP increases the cross-modulation between the oscillator and filter, resulting in a harsher sound to the right. Keep left for softer sounds.

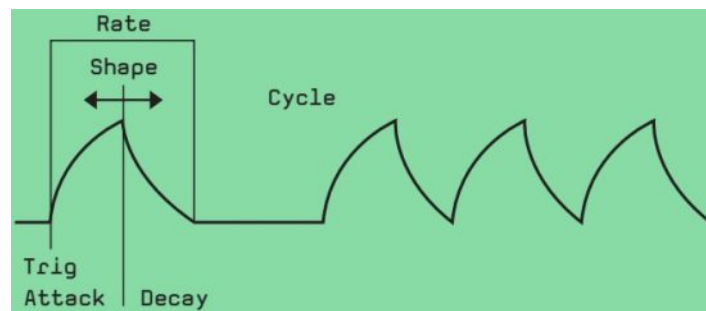
ENVELOPE

shapes the character of your sound in time.

RATE controls the speed of the envelope.

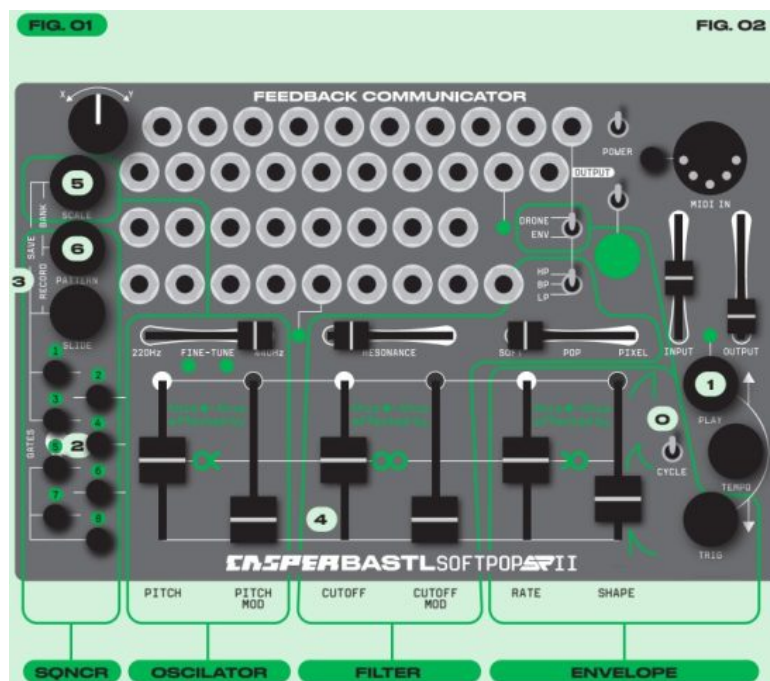
SHAPE adjusts the proportion between the attack and decay phase of the envelope.

CYCLE makes the envelope oscillate like an LFO.



TRIG will trigger the envelope once.

The DRONE/ENV switch lets you select between DRONE (sound always on) or ENV (volume increases with the envelope).



SEQUENCER INTRODUCTION

FIG. 02

0. To start, set the CYCLE switch of the envelope to the lower position (off).

1. Press the PLAY button so it starts blinking.

If it is not blinking, adjust the tempo settings.

Press TEMPO several times to TAP the tempo. Hold TEMPO and press PLAY▲ or TRIG▼ to adjust the tempo in small steps. Hold TEMPO and PRESS GATES to select a TEMPO divider. Start with 5 and explore the other options later.

Make sure the MIDI Clock is not activated: hold the MIDI button and press PLAY so the light is off.

2. Press the GATE buttons to select when the envelope is triggered. Flip the DRONE/ENV switch or pull the CUTOFF MOD fader to hear the effect of the envelope.
3. To RECORD a melody:
 - a) hold down PATTERN+SLIDE to RECORD
 - b) move the PITCH FADER to RECORD (keep the PITCH MOD fader down for start)
 - c) release PATTERN+SLIDE buttons to hear your melody.
4. Bring up PITCH MOD to apply randomness to your melody.
5. Hold SCALE and press GATE to select a scale. Press multiple GATES in a row to chain scales.
6. Hold PATTERN and press GATE to select and make a new pattern.
7. When you have more patterns, let's make them play one after another. Hold PATTERN and press several GATES in a row to chain the patterns.
8. Press SLIDE + SCALE to SAVE all your music for the next time you turn on the softPop2.
9. Hold a GATE and press UP/DOWN or move the PITCH FADER to edit the pitch of the step.
10. Hold GATE and press TEMPO to preview the pitch of the step.


EXPLORE THE UNIT AND TRY TO DECODE

ALL THE COOL THINGS YOU CAN DO WITH SOFTPOP2!

B A S T L

INSTRUMENTS

Documents / Resources

	<p>BASTL INSTRUMENTS SOFTPOP SP2 Oscillator Synthesizer [pdf] Instru</p> <p>ction Manual</p> <p>SOFTPOP SP2, SOFTPOP SP2 Oscillator Synthesizer, Oscillator Synthe</p> <p>sizer, Synthesizer</p>
---	--

References

- [User Manual](#)

Leave a comment

Your email address will not be published. Required fields are marked *

Comment *

Name

Email

Website

☐ Save my name, email, and website in this browser for the next time I comment.

Post Comment

Search:

e.g. whirlpool wrf535swhz

Search

[Manuals+](#) | [Upload](#) | [Deep Search](#) | [Privacy Policy](#) | [@manuals.plus](#) | [YouTube](#)

This website is an independent publication and is neither affiliated with nor endorsed by any of the trademark owners. The "Bluetooth®" word mark and logos are registered trademarks owned by Bluetooth SIG, Inc. The "Wi-Fi®" word mark and logos are registered trademarks owned by the Wi-Fi Alliance. Any use of these marks on this website does not imply any affiliation with or endorsement.