



Basil Hook Mounting Instructions

[Home](#) » [BASIL](#) » Basil Hook Mounting Instructions 

Contents

- [1 Basil Hook Mounting](#)
- [2 Translations](#)
- [3 Optional adjustability](#)
- [4 How to secure the straps during cycling](#)
 - [4.1 Strap Safety warnings](#)
- [5 Option a: Single bag](#)
- [6 Option b: Backpack](#)
- [7 Documents / Resources](#)
 - [7.1 References](#)
- [8 Related Posts](#)



Basil Hook Mounting

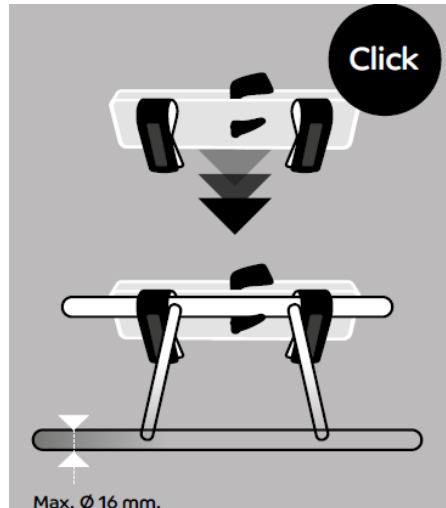


More information at www.basil.com

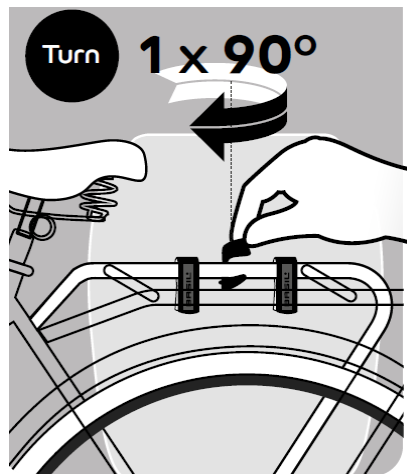
'All rights reserved'

Translations

1. Click your bag with the hooks onto the bicycle carrier



2. Turn the "green flag" to lock your bag on the carrier



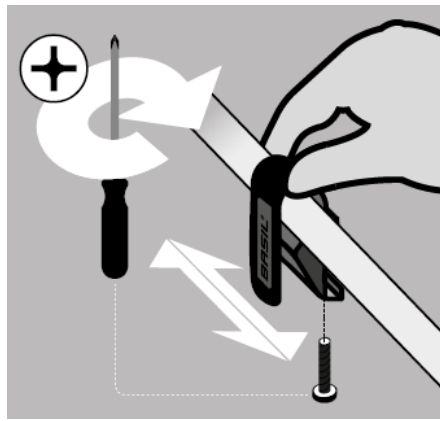
May only be mounted by adults

1. Please make sure that you regularly check if the Basil products are properly and safely installed on your bicycle
2. The warranty will be no longer valid once modifications have been made to the product by its owner and/or when the product has not been assembled and/or used according to the instructions supplied.
3. Weather influences can affect the product.
4. When using Basil products, that are also compatible with / or can be mounted onto third-party products please make sure that the instructions with regards to assembly and/or use of the products supplied by the manufacturer are being followed. In this case Basil cannot be held liable for the assembly and/or the use of the products delivered by third parties

Optional adjustability

Horizontal adjustability / Replacement

Adjust the position of the hooks to avoid that it will slide over the carrier



In case of carriers with small tubes there is an alternative hook available which avoids that the bag will rattle on your carrier.



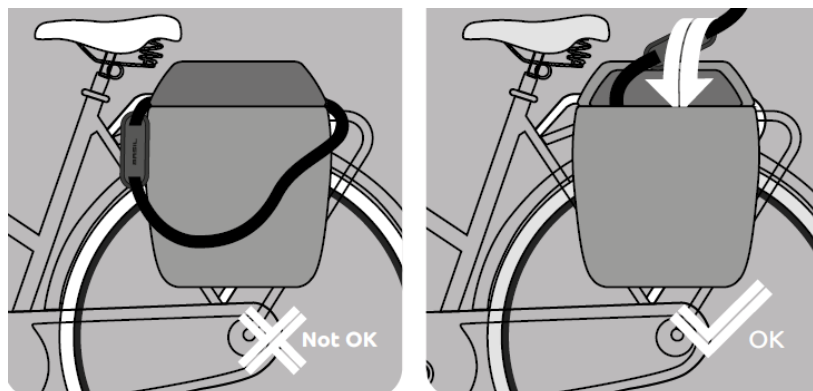
How to secure the straps during cycling

Strap Safety warnings

- Option a Single bag
- Option b Backpack

Option a: Single bag

1. Don't leave the shoulder straps outside the bag during cycling.
 - Shoulder strap has to be placed in the bag.



Option b: Backpack

2. Don't leave the shoulder straps outside the bag during cycling.

- Pull shoulder straps to the front and click them together.



Documents / Resources

	<p>BASIL Basil Hook Mounting [pdf] Instructions Basil Hook Mounting, Basil Hook, How to Mount Basil Hook on System, Hook Mounting</p>
--	--

References

-  [Basil Bicycle bags & Baskets - Spread the cycling joy! - Basil](#)