

baseus
**Security App
Function**



Baseus Security App Function User Manual

[Home](#) » [Baseus](#) » Baseus Security App Function User Manual 

Contents

- [1 Baseus Security App Function User Manual](#)
- [2 How to add the H1 HomeStation?](#)
- [3 How to add the N1 Outdoor Camera?](#)
- [4 References](#)
- [5 Related Posts](#)

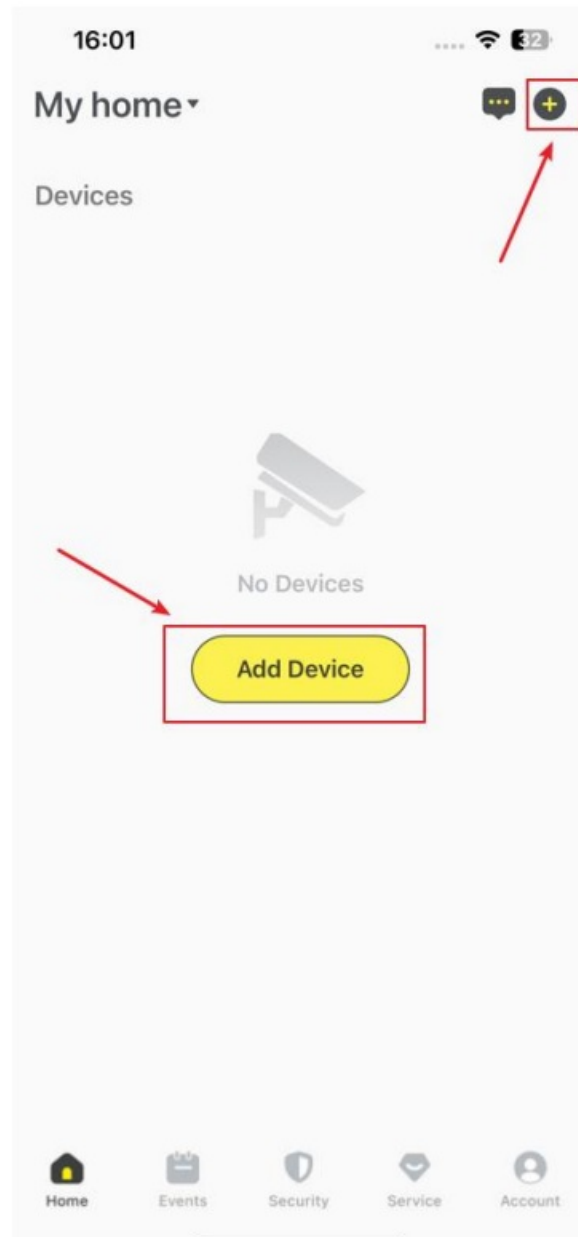
baseus

Baseus Security App Function User Manual

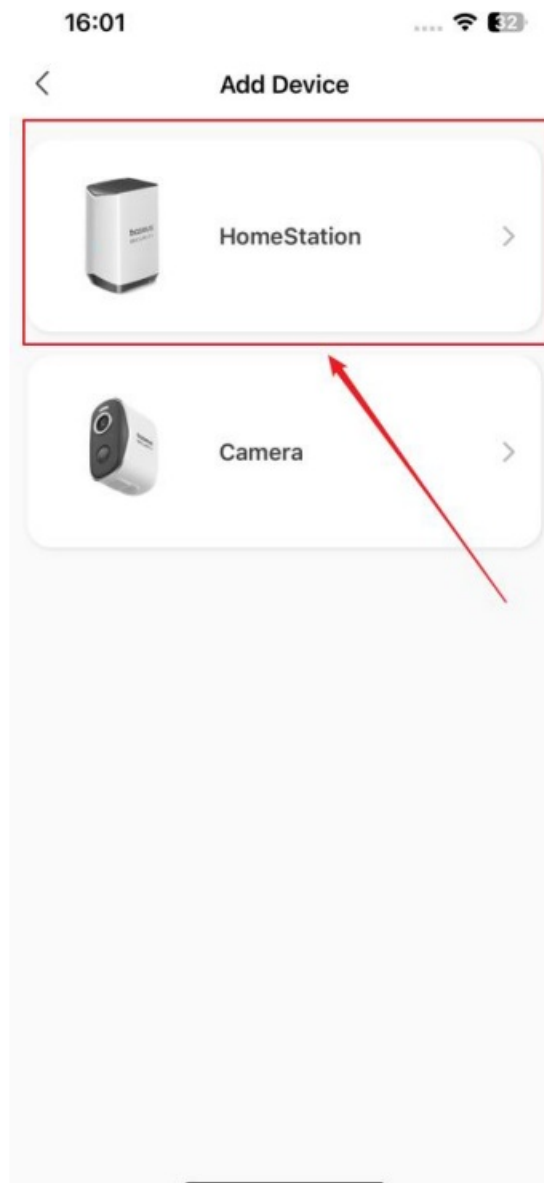


How to add the H1 HomeStation?

1. Enter the homepage, and click the [Add Devices] button in the middle or the “+” icon button on the top right corner to enter into the device adding list.



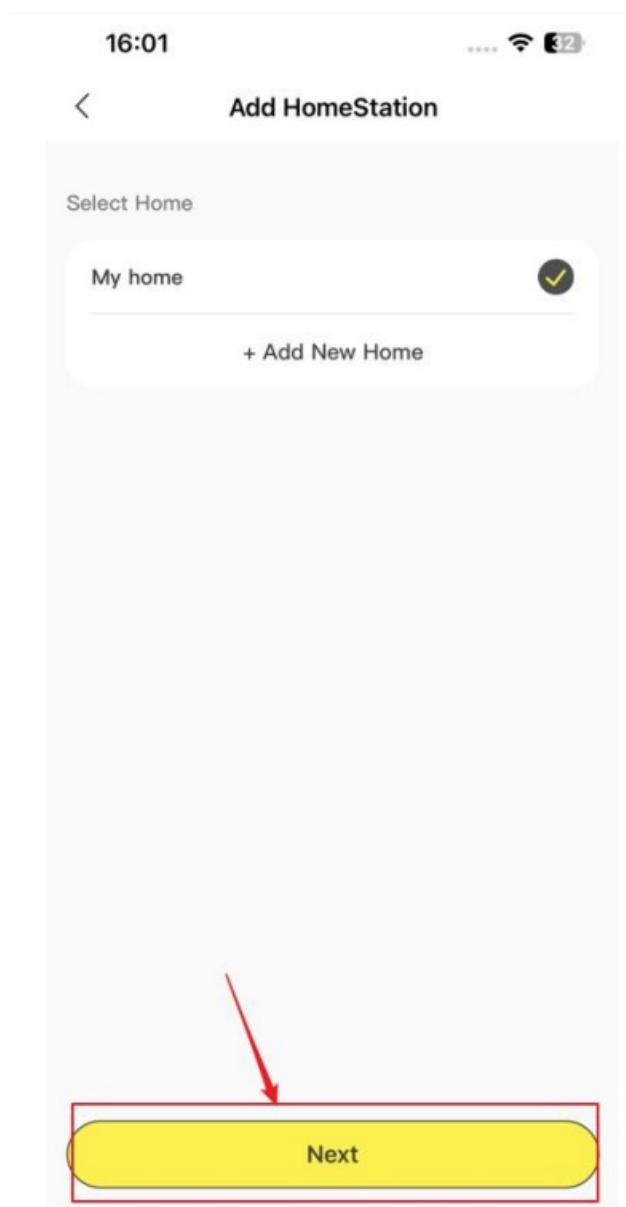
2. Click the “HomeStation” category



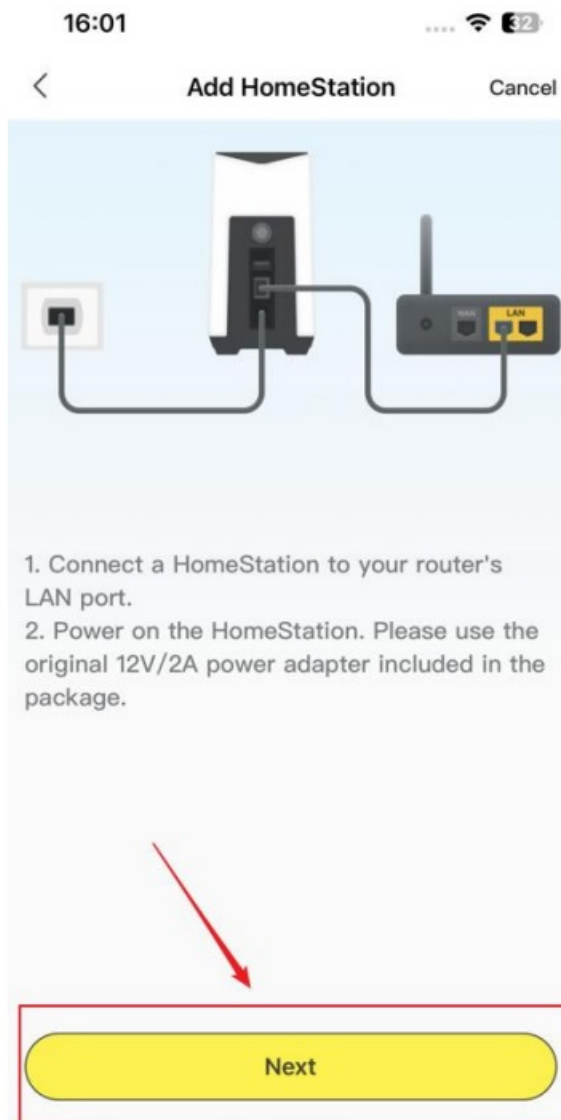
3. Choose the corresponding model number of the HomeStation.



4. Bind the desired HomeStation to "My home", and click the [Next] button.



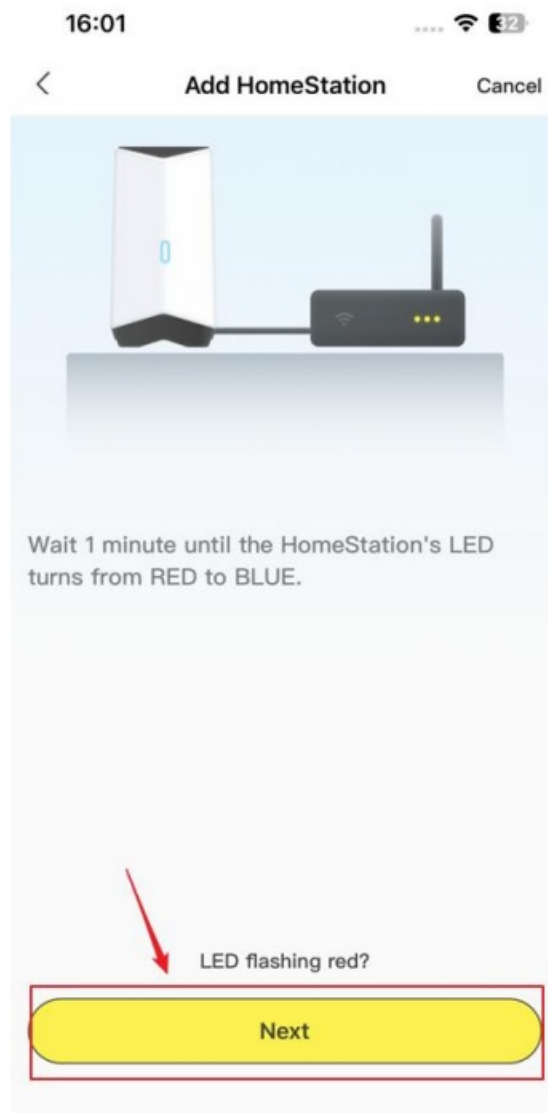
5. According to the on-page guide, power up the HomeStation and connect it to your router. And click the [Next] button.



6. Connect your phone to the same WiFi the HomeStation is connected to. Then, click the [Next] button.



7. Wait until the HomeStation's LED turns to blue, and click the [Next] button.



8. Long press the SYNC/ALARM OFF button for about 5 seconds, wait until HomeStation's LED starts to flash blue, and then click the [Next] button.

16:02



Add HomeStation

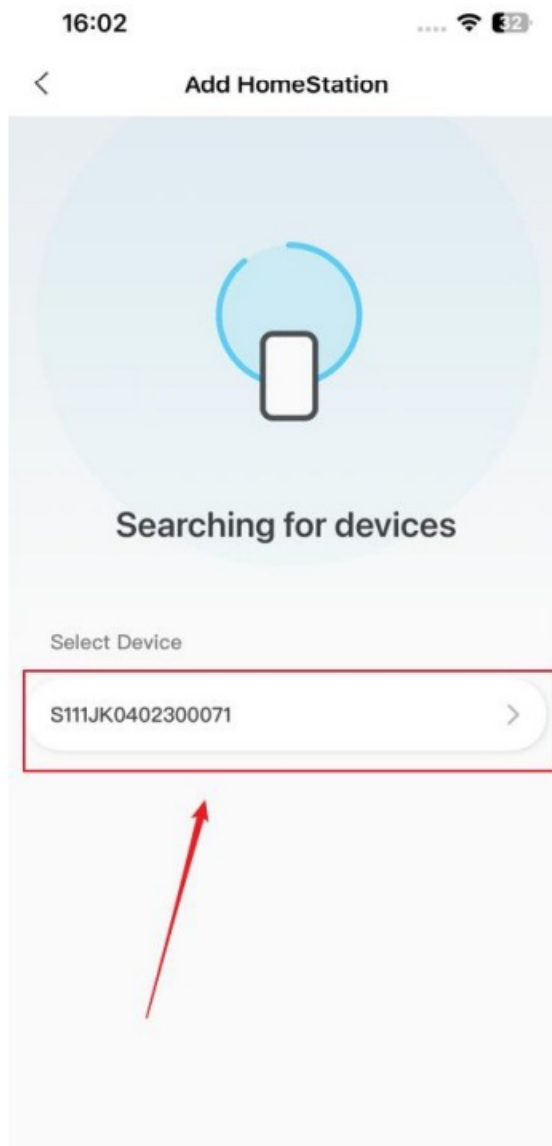
Cancel



When the HomeStation's LED is blue, press and hold the SYNC/ALARM OFF button for more than 5 seconds, and the HomeStation's LED will change from blue to flashing blue.



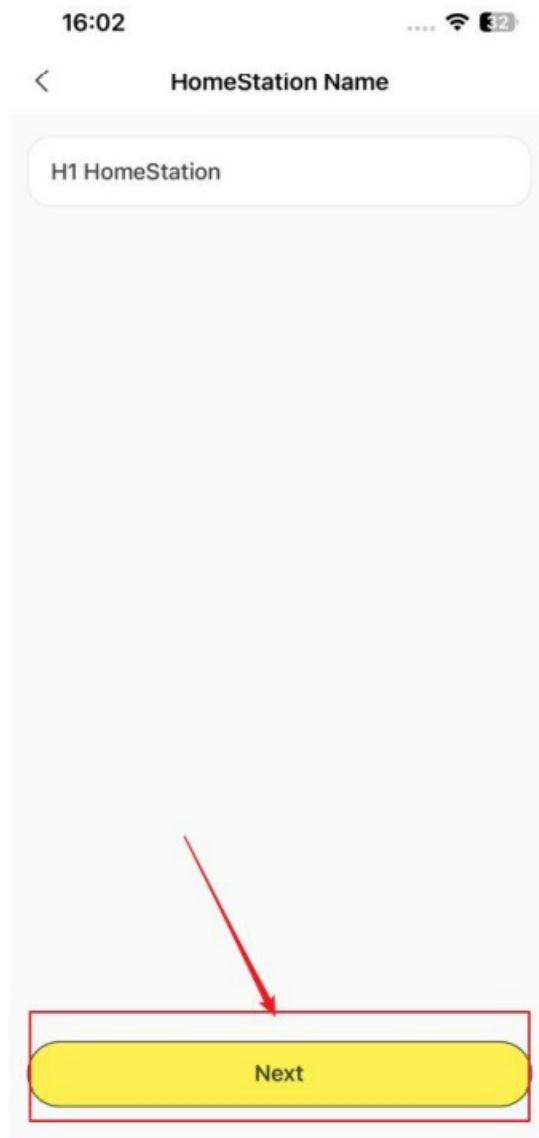
9. Select the corresponding SN code of the HomeStation connected to your phone.



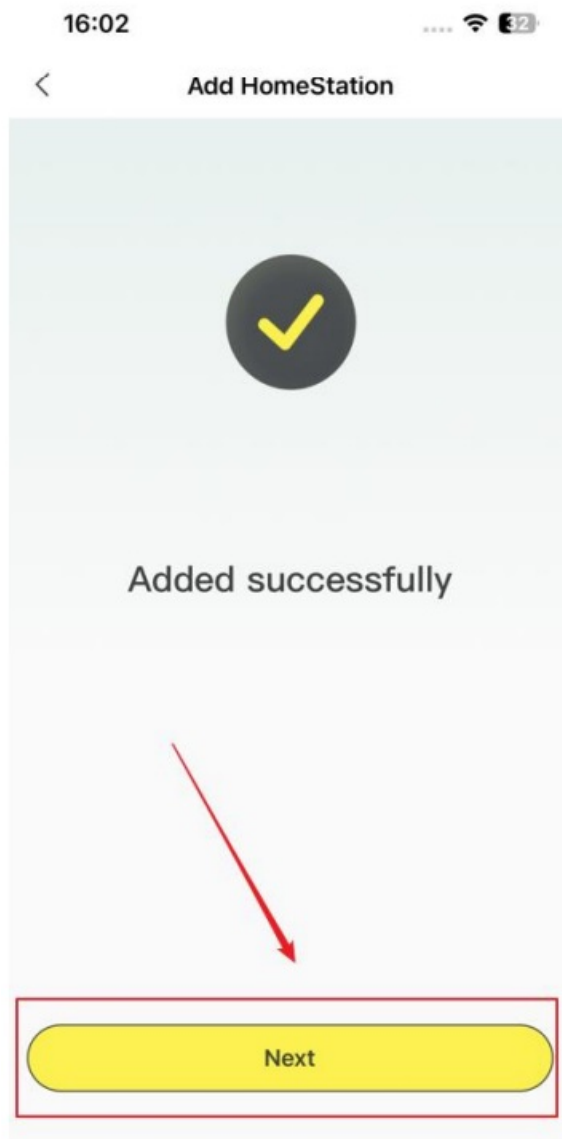
10. Wait until the App binds to the HomeStation.



11. After binding the HomeStation, you can edit to name the device and click the [Next] button to enter another page.



12. When you see “Added successfully”, click the [Next] button to enter into the operation guide.



13. Click the [Finish] button and return to the homepage, then, you check the bound HomeStation status.

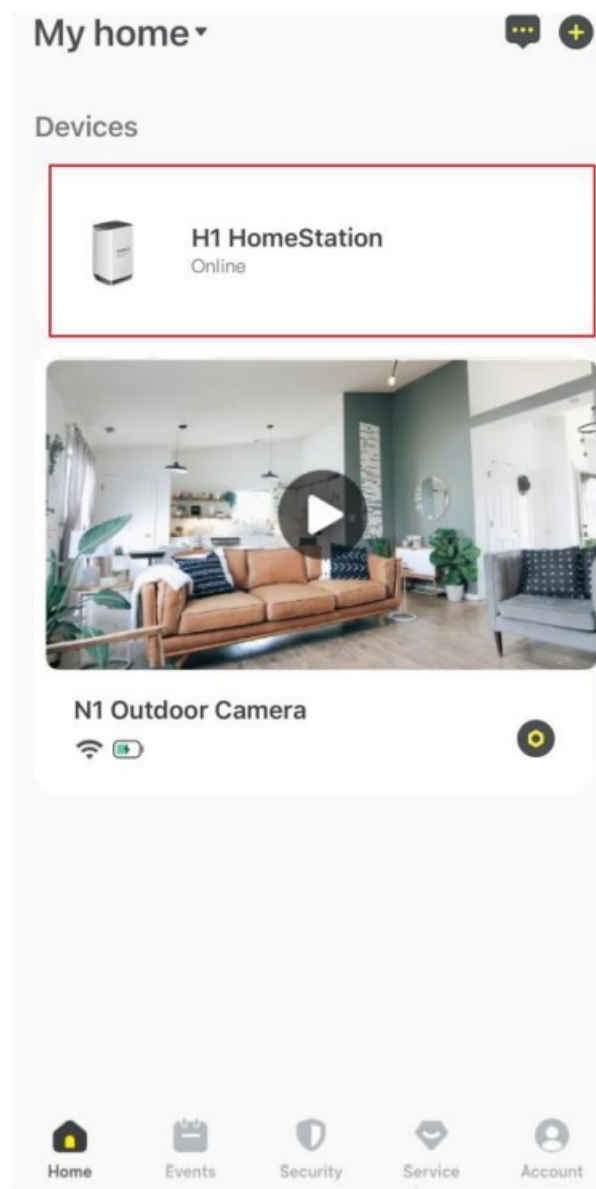


Add HomeStation



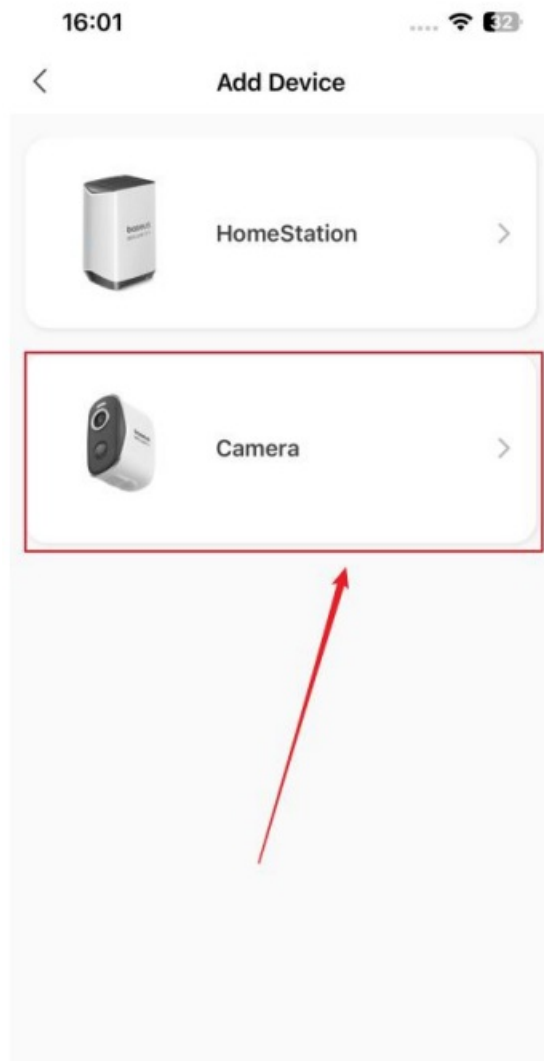
1. By adjusting the placement of your HomeStation, you can optimize the coverage range and quality of your wireless signal.
2. Place the HomeStation in a central location that is free from signal interference.

**Finish**

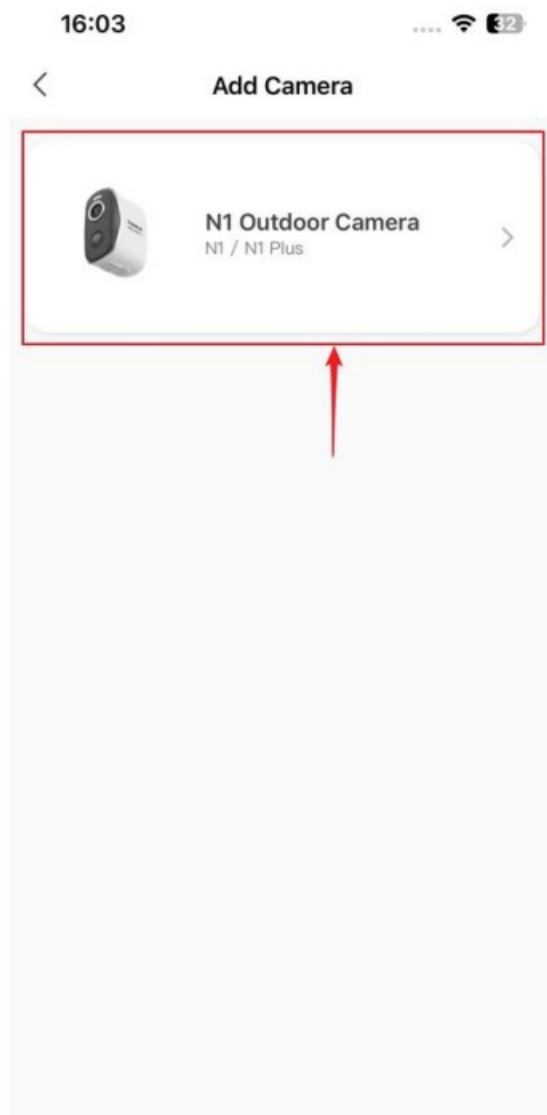


How to add the N1 Outdoor Camera?

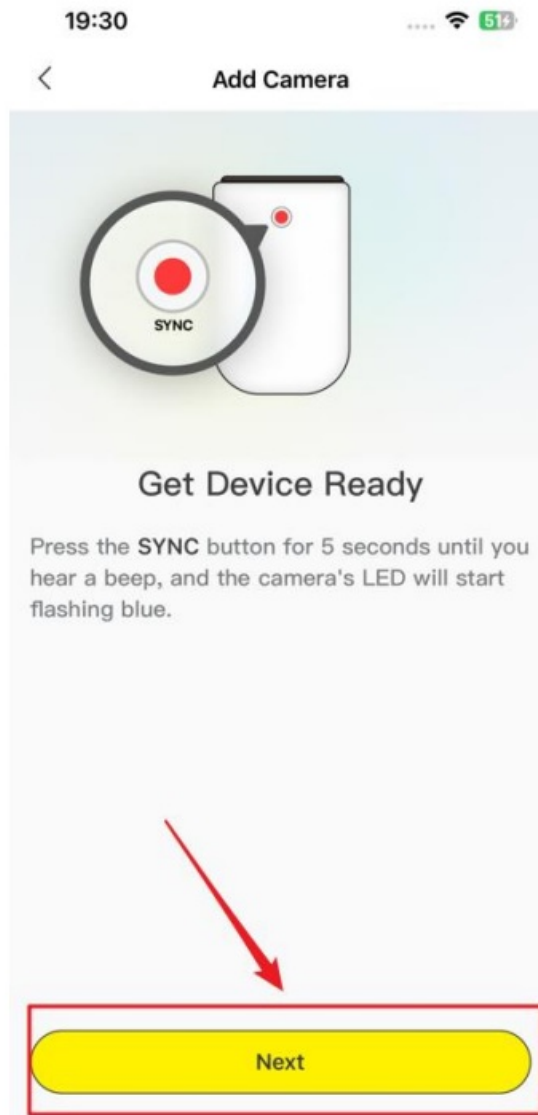
1. Choose the "Camera" category on the "Add Device" page.
- 2.



Choose the desired model of the camera selected.



3. Power up the selected camera, long press the SYNC button for 5seconds until you hear a beep, then click the [Next] button.(this requiresthe logged account to be bound to a HomeStation)



4. Choose the HomeStation to bind the selected camera. (ensure the home station is powered on and near the camera)

16:03

****   32



Add Camera

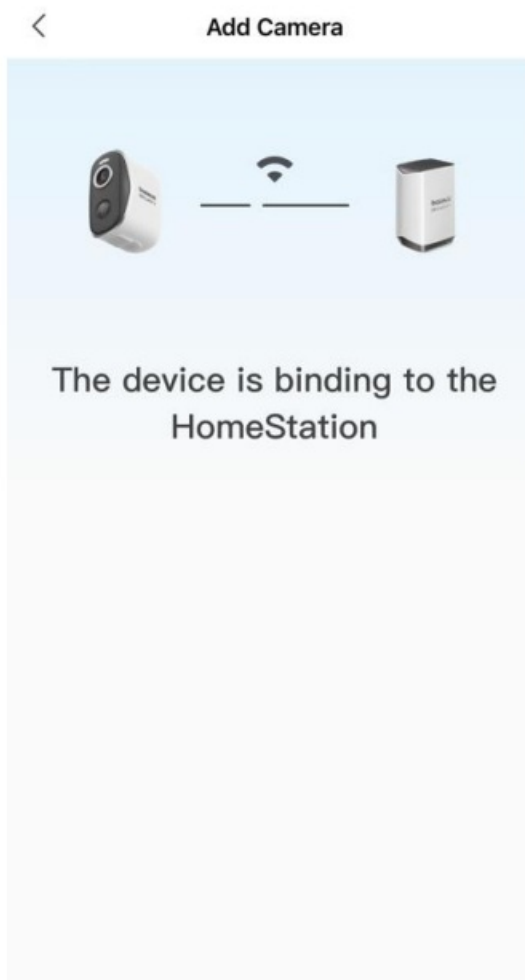
Please select a HomeStation to
bind a camera



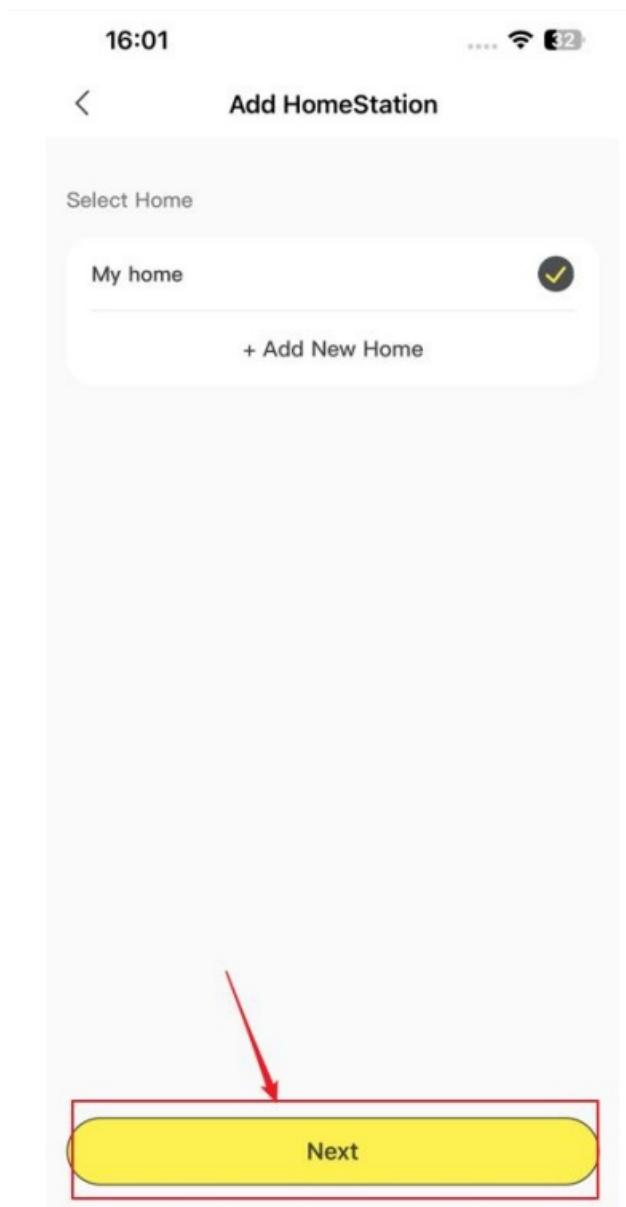
H1 HomeStation
My home



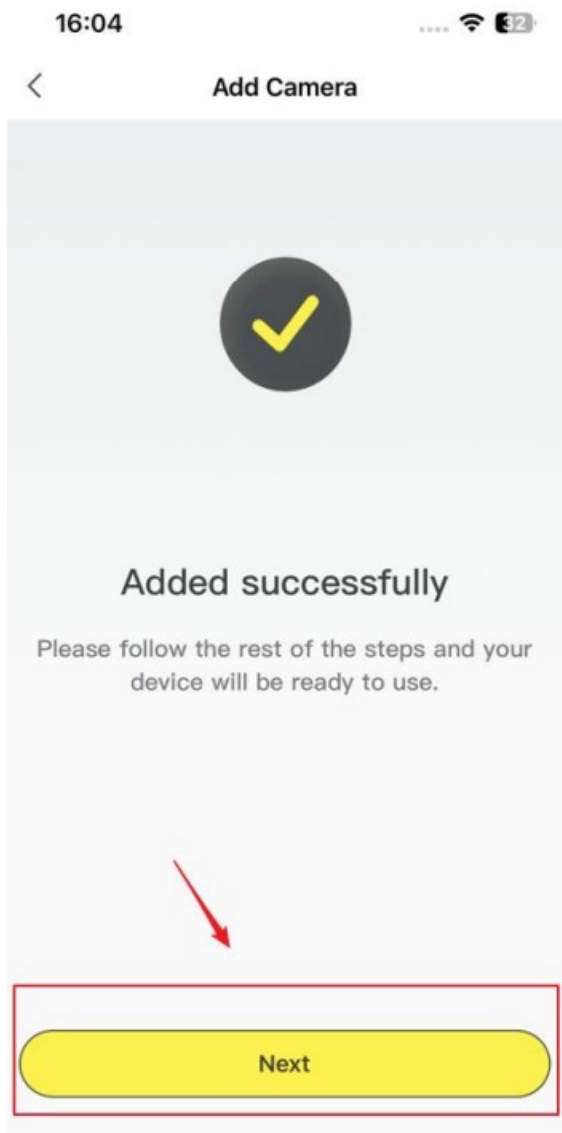
5. Wait until the camera is bound to the HomeStation.



6. After successful binding, enter the Camera Name page to choose or edit the name, then click the [Next] button.



7. Click the [Next] button and turn to the operation guide.



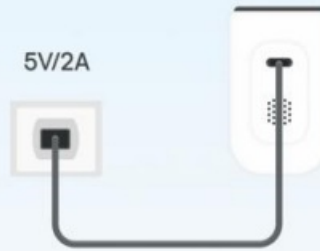
8. Check and follow the operation guide, click the [Finish] button, and return to the homepage. Then, you can start camera monitoring.

16:04



Charging

Cancel



Before installation, fully charge the battery.
The battery lasts for approximately seven months of monitoring.

It takes approximately 4–5 hours to fully charge from empty using the 5V/2A power adapter.

After charging, please remember to close the USB port cover.



Next

16:04



Pre-Installation

Cancel



Please make sure to close the USB protective plug at the bottom of the camera before installing it.



Next

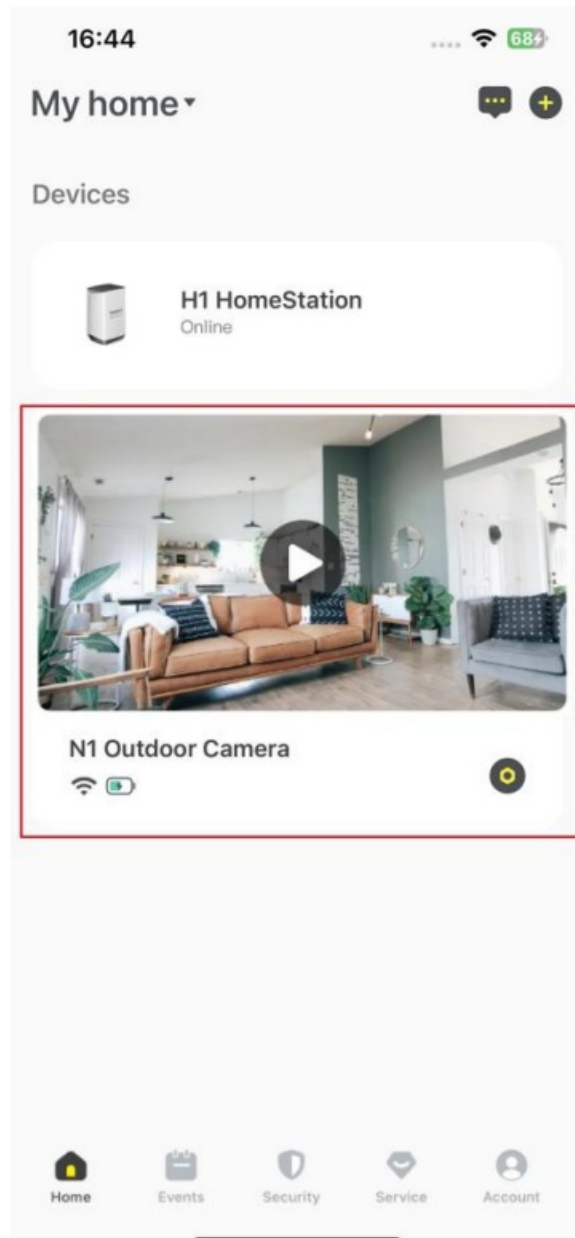


Mounting Camera



1. Choose a location with an ideal viewing angle. We recommend mounting the camera 7–10 feet (2–3 meters) above the ground.
2. Turn the knob of the mounting bracket counterclockwise to loosen and remove it.
3. Drill holes with a 15/64-inch (6 mm) drill bit and insert expansion bolts into the holes. Using expansion bolts is necessary for walls made of hard materials such as concrete, brick, or stucco.

**Finish**



Download PDF: [Baseus Security App Function User Manual](#)

References

- [User Manual](#)

[Manuals+](#), [Privacy Policy](#)

This website is an independent publication and is neither affiliated with nor endorsed by any of the trademark owners. The "Bluetooth®" word mark and logos are registered trademarks owned by Bluetooth SIG, Inc. The "Wi-Fi®" word mark and logos are registered trademarks owned by the Wi-Fi Alliance. Any use of these marks on this website does not imply any affiliation with or endorsement.