



BARSKA AX11930 Large Keypad Depository Safe User Manual

[Home](#) » [BARSKA](#) » BARSKA AX11930 Large Keypad Depository Safe User Manual 



Contents

- [1 AX11930 Large Keypad Depository Safe](#)
- [2 INSTALL BATTERIES](#)
- [3 OPEN SAFE WITH EMERGENCY KEY](#)
- [4 CARE AND MAINTENANCE](#)
- [5 MOUNTING INSTRUCTIONS](#)
- [6 Documents / Resources](#)
 - [6.1 References](#)

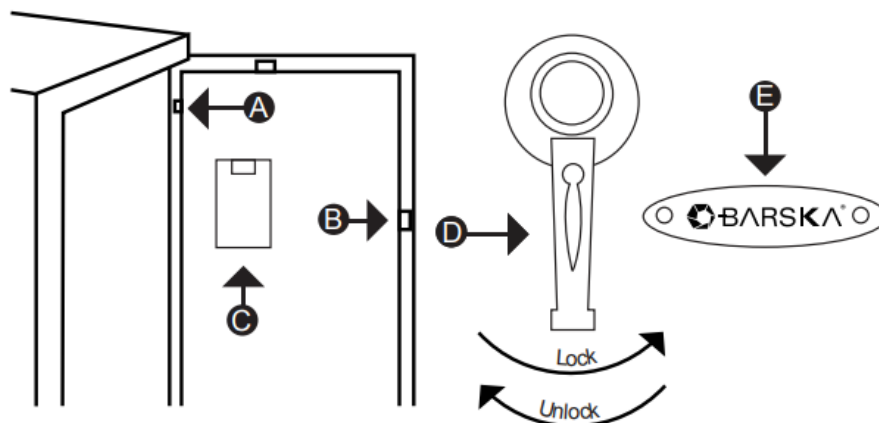
AX11930 Large Keypad Depository Safe

WARNING

- Test registered pin code a few times before closing the safe door.
- Avoid leaving door open and unattended; it will allow unauthorized individuals to reprogram the safe, gaining full access to the safe and its contents.
- Test the Emergency Keys and store them in a secure place, NOT inside of the safe.
- Test and make sure the safe works properly before mounting.
- Mount the safe before use because the safe has a small base with a heavy door, and will tip forward if not properly mounted.
- Keep children away from safe; they should not play with or around the safe at anytime. Children at play could accidentally get locked inside the safe or accidentally pull on the safe door causing safe to tip over if not properly mounted.
- Failure to follow these warnings could result in serious injury or death.

NOTE: BARSKA is not responsible for any damage or lost contents in the safe due to moisture.

NOTE: BARSKA is not responsible if the safe is stolen or contents in the safe.



A. Initialization Button

B. Bolts

C. Battery Compartment

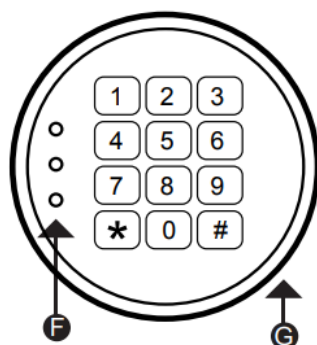
D. Handle

E. Emergency Key Access

F. Indicator Lights

G. Keypad

* Actual model may vary



GETTING STARTED

1. Remove Emergency Keys from accessory package
2. To expose the Emergency Key access, remove Logo Plate screws with provided tool
3. Insert Emergency Key into key access, push and turn counter-clockwise
4. Turn Handle clockwise to open the safe

INSTALL BATTERIES

1. Remove Battery Compartment cover
2. Insert 4 AA batteries and restore battery cover

FACTORY DEFAULT MODE \ CREATING A PERSONAL PIN CODE

Safe retains two 4-6 digit pin code.

Register first pin code

Press initialization button then enter desired pin code and press "*" when finished 4-6 digits.

Register second pin code

Press 00 and then press. Then, enter desired pin code and press "*" when finished 4-6 digits.

TESTING PERSONAL PIN CODE

1. With the safe door open and the Bolts extended in the locked position, enter in your personal pin code on the Keypad and press the “#” symbol.
2. Turn the Handle.
If pin code was registered correctly the Bolts will retract.
If pin code was NOT registered correctly the Bolts will stay in the locked position.
If pin code was NOT registered correctly repeat steps in “FACTORY DEFAULT MODE \ CREATING A PERSONAL PIN CODE”.
3. Test a pin code that is not registered to ensure the Bolts will stay in the locked position.

OPENING & CLOSING SAFE WITH PERSONAL PIN CODE OPEN:

1. Enter in your personal pin code on the Keypad and press the “#” symbol.
2. Turn the Handle clockwise to the unlock and pull the safe door open.

CLOSE:

To close safe, close door and turn Handle counter clockwise to the lock position.

CHANGING PERSONAL PIN CODE

Follow steps in “FACTORY DEFAULT MODE \ CREATING A PERSONAL PIN CODE ”

LOCK OUT MODE

When the wrong pin code is entered 3 consecutive times lock out mode will activate for 5 min; safe cannot be used during this time; please wait or open with emergency keys.

SOUND OPTIONS

Sound OFF Press *633 on keypad Beep ON Press *66 on keypad

OPEN SAFE WITH EMERGENCY KEY

1. To expose the Emergency Key access, remove Logo Plate screws with provided tool
2. Insert Emergency Key into key access, push and turn key counter-clockwise, and turn Handle clockwise to open the safe

NOTE: Store Emergency Keys in a secure place, NOT inside of the safe

LOW BATTERY WARNING

1. When the door is closed and 3 repetitive beeps are heard, and Indicator Lights flash red, it indicates the batteries are low
2. Replace batteries immediately
 - Open safe, remove Battery Compartment cover and all 4 AA batteries
 - Insert 4 new AA batteries and restore Battery Compartment cover

NOTE: After batteries are out over 24 hours, all the registered PIN codes will not be retained. Please use the key to open the safe and reset the PIN codes.

CARE AND MAINTENANCE

- To maximize the security and performance of the safe, keep keypad clean; use a dry cloth to remove any smudges after each use
- Keep liquids away from the control panel. Spills on the control panel will cause damage and possibly electric

shock

- Secure safe in a proper area to prevent from falling and causing damage or injury
- DO NOT disassemble the product. For all repairs, contact BARSKA Customer Service
- DO NOT use chemicals or cleaning agents to clean the safe

MOUNTING INSTRUCTIONS

The safe must be mounted to a wall or floor. Be aware of the load bearing. Failure to do so can result in personal injury and/or damage to property. Use appropriate tools when performing work and always use eye protection

Wall Mounting

Do not mount the safe without anchoring to the wall

- Find the studs in the wall, at your desired location. Most studs are 16 inches or 24 inches apart
- Check the wall for concealed wires or pipes Measure the location of the pre-set drill holes; mark their exact position onto the wall ensuring that the studs or anything else behind will not interfere
- Drill the appropriate size holes for the anchors you are using
- Carefully press the anchor into the holes at this time
- Mount the safe by running screws from inside of the safe and securing to anchors; ensure the safe is mounted securely

Floor Mounting

- Use proper drill tools depending on the type of floor you are mounting the safe (wood, tile, or concrete)
- Measure the location of the pre-set drill holes; mark their exact position onto the floor
- Drill the appropriate size holes for the anchors you are using
- Carefully press the anchor into the holes at this time
- Mount the safe by running screws from inside of the safe and securing to anchors; ensure the safe is mounted securely

1 YEAR LIMITED WARRANTY

SAFE/LOCK BOX

BARSKA warrants this new safe/lock box to be free of defects in material and/ or workmanship under normal use for a period of twelve (12) months from the date product is purchased. This limited warranty is delimited to repair or replacement only. This warranty does not cover damage caused by improper installation or maintenance. BARSKA disclaims all liability for incidental or consequential damages resulting from misuse, abuse, accident (such as dropping), fire, flood, service or repairs other than those performed by BARSKA, acts of nature, or arising out of any breach of this warranty. Altering the product under any circumstances will automatically void the warranty.

For service under this limited warranty, please have available the proof of purchase and the purchase date and location as well as a detailed description of the problem. This warranty is not transferable and only applies to the original purchaser with a proof of purchase from BARSKA or from an authorized dealer. This warranty applies only to products purchased within the United States, excluding Alaska, the Hawaiian Islands and all U.S. territories in the Caribbean and the Pacific.

BARSKA will examine and go through troubleshooting procedures, product repair or replacement of defective part(s) or units with new part(s) or provide a new unit, if necessary, during the warranty period. Reasonable shipping/handling charges may apply and are based on Barska sole discretion. Purchaser shall be required to prepay Shipping/handling charges with a check or money order to BARSKA at time product is returned. The Return Merchandise Authorization Number (RMA#) and shipping/handling charge MUST be obtained from BARSKA in advance of return. BARSKA shall not be liable for damages or loss occurring during shipping. Please visit via www.barska.com or call 909.445.8168 to obtain the RMA#, Shipping/handling amount, and for more information.

BARSKA reserves the right to modify or discontinue, without prior notice to the purchaser, any model or style of the product. BARSKA will determine, at its sole discretion, whether a product will be repaired or replaced. BARSKA reserves the right to discontinue or change any feature of its products at any time. If an exact replacement or product is not available, BARSKA reserves the right to provide a part or product that matches as closely as possible.


LIMITATION OF REMEDIES

BARSKA disclaims any warranties, express or implied, whether of merchantability or fitness for a particular use, except as expressly set forth herein. The sole obligation of BARSKA under this limited warranty shall be to repair or replace the covered product, in accordance with the terms set forth herein. BARSKA expressly disclaims any lost profits, general, special, indirect or consequential damages which may result from breach of any warranty, or arising out of the use or inability to use any BARSKA product. Any warranties which are implied and which cannot be disclaimed shall be limited in duration to a term of one year from the date of original retail purchase. Some states do not allow the exclusion or limitation of incidental or consequential damages or limitation on how long an implied warranty lasts, so the above limitations and exclusions may not apply to you.

BARSKA
855 Towne Center Drive, Pomona, CA 91767

©2024 BA Pomona, CA 91767 www.barska.com
See reverse side for more information

Documents / Resources

	<p>BARSKA AX11930 Large Keypad Depository Safe [pdf] User Manual AX11930 Large Keypad Depository Safe, AX11930, Large Keypad Depository Safe, Depository Safe, Safe</p>
---	--

References

- [Barska - Your Ultimate Source for Premium Safes and Outdoor Gear](#)
- [User Manual](#)

[Manuals+](#), [Privacy Policy](#)

This website is an independent publication and is neither affiliated with nor endorsed by any of the trademark owners. The "Bluetooth®" word mark and logos are registered trademarks owned by Bluetooth SIG, Inc. The "Wi-Fi®" word mark and logos are registered trademarks owned by the Wi-Fi Alliance. Any use of these marks on this website does not imply any affiliation with or endorsement.