



BARRET BCM90204 Base Station and Rapid Deployment Masts User Guide

[Home](#) » [BARRET](#) » BARRET BCM90204 Base Station and Rapid Deployment Masts User Guide 

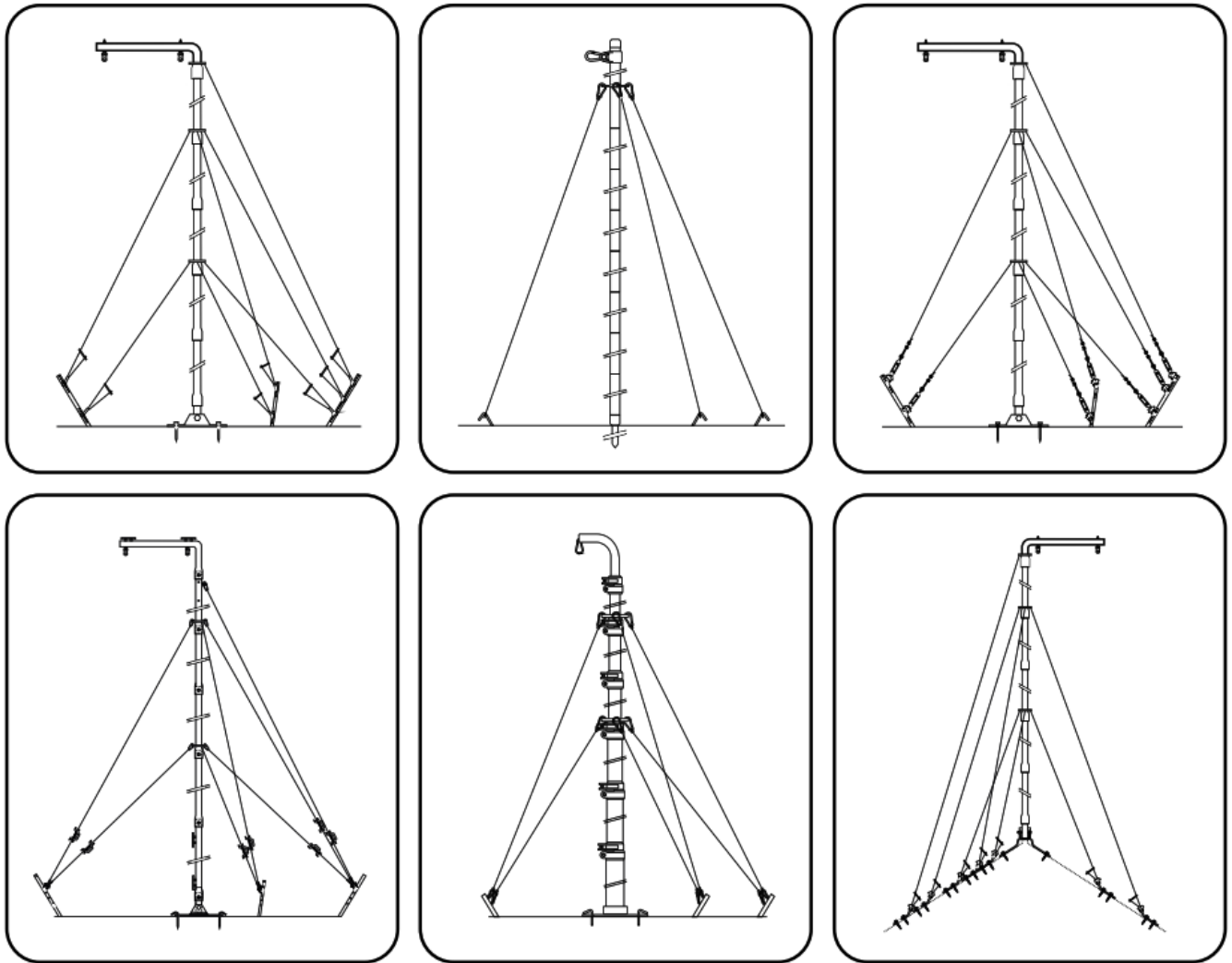


Contents

- [1 Mast Guide](#)
- [2 Specifications](#)
- [3 Documents / Resources](#)
- [4 Related Posts](#)

Mast Guide

Base Station and Rapid Deployment Masts



P/N BCM 90204/4

© Barrett Communications

**10 Metre Mast – (P/N 90205)
With Nylon Guys for Ground Mounting
Compatible Barrett antennas**

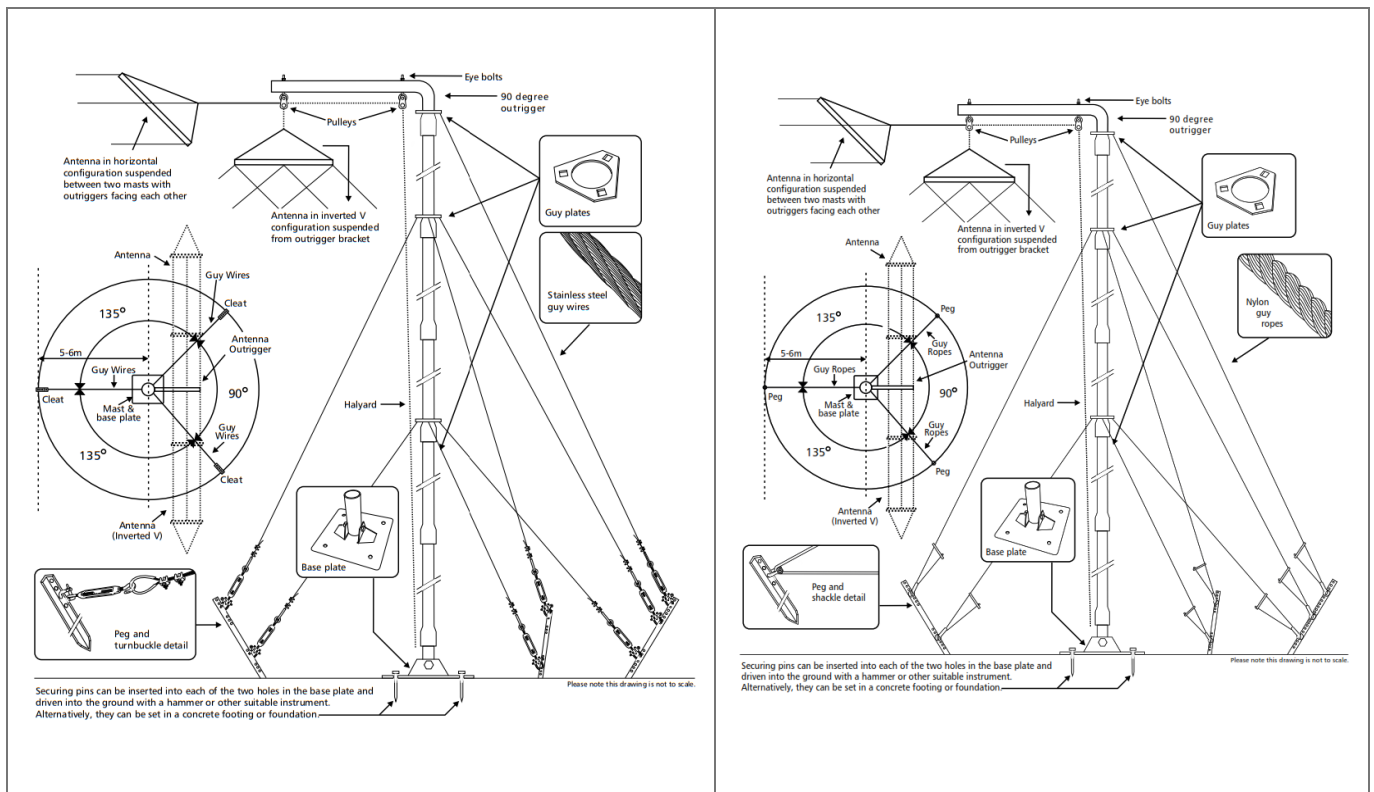
912 Single-wire broadband dipole 150 W HF	P/N: BC 91201
912 Multi-wire broadband dipole 150 W HF	P/N: BC 91200
912 Multi-wire broadband dipole 500 W HF	P/N: BC 91202
912 HF Multi-wire broadband dipole 1kW	P/N: BC91203

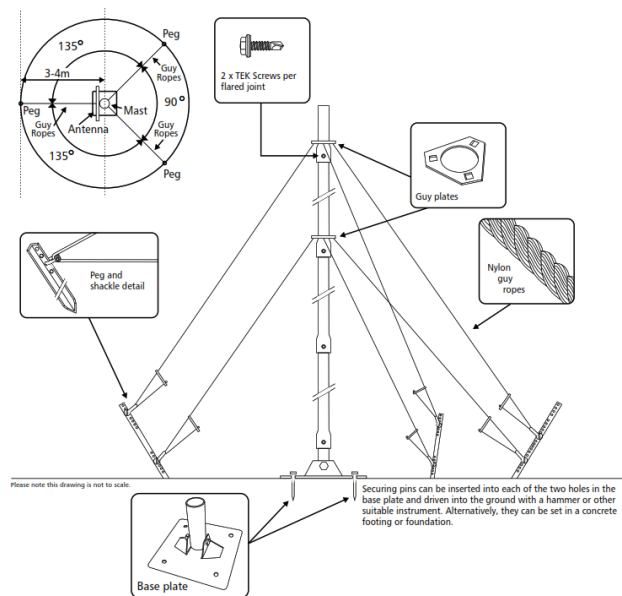
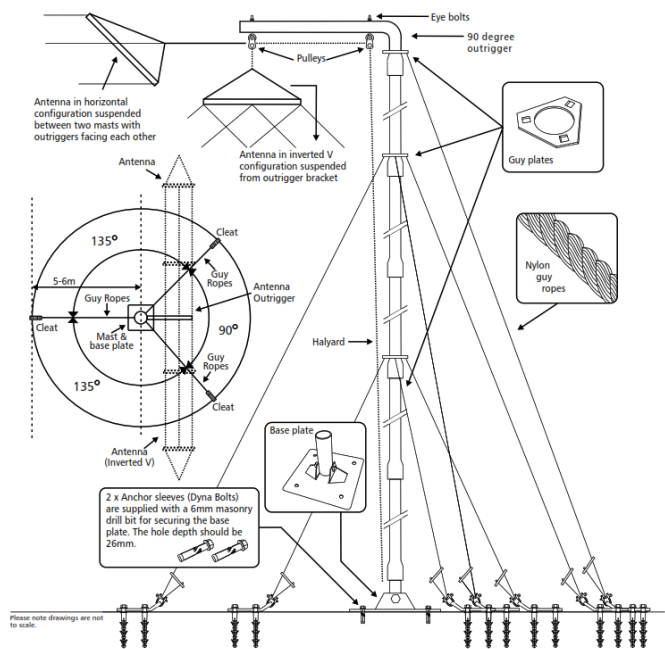
Specifications

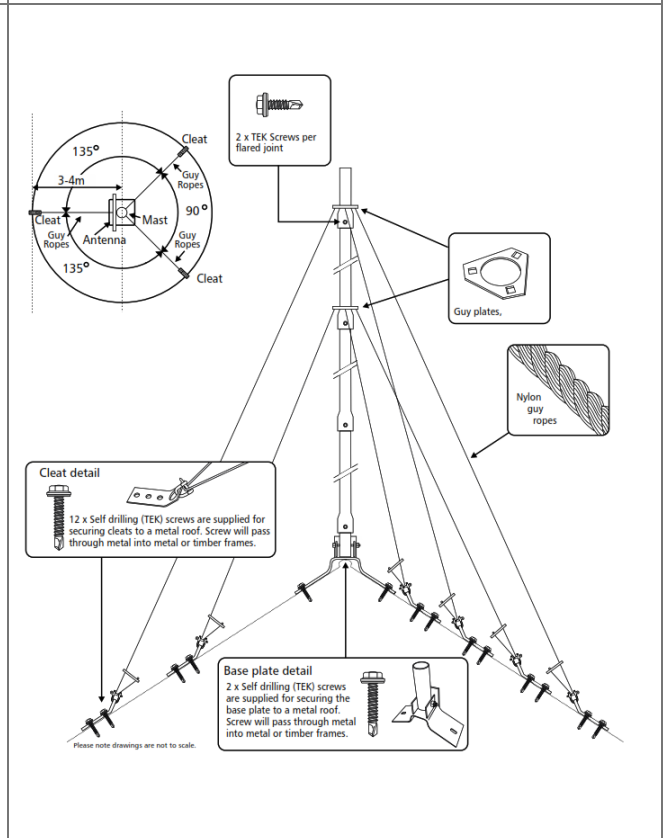
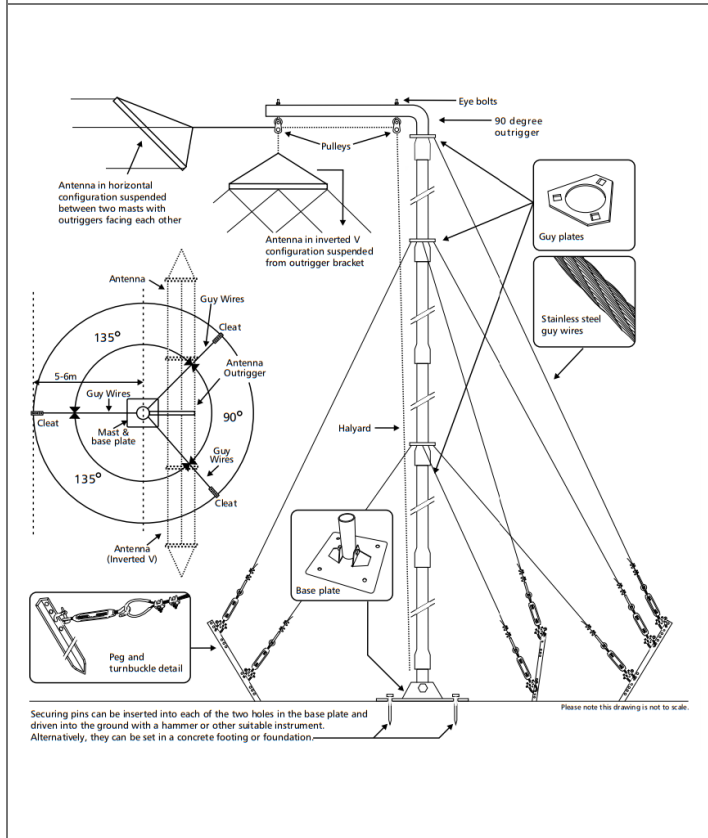
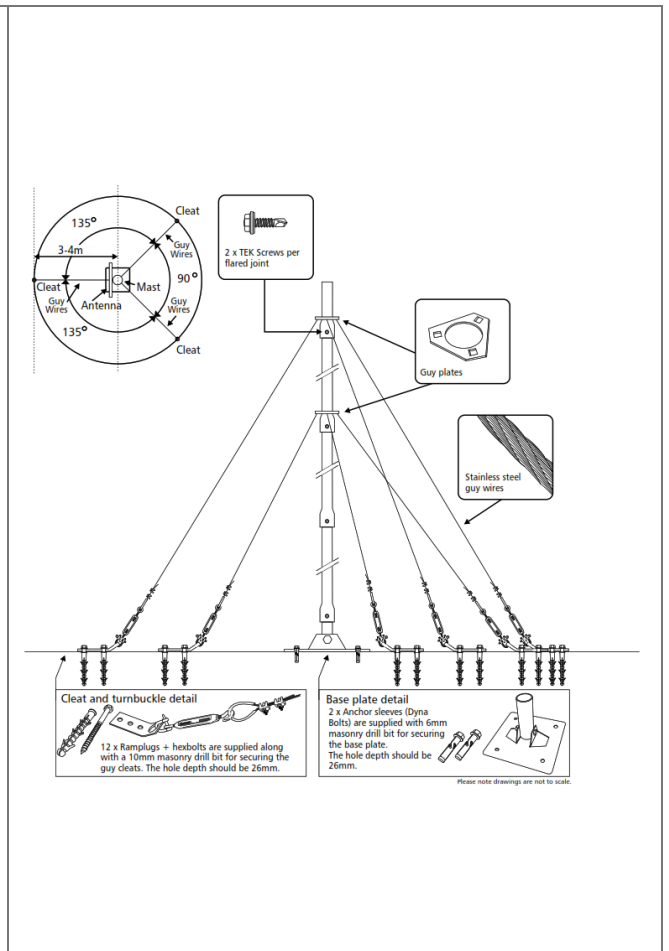
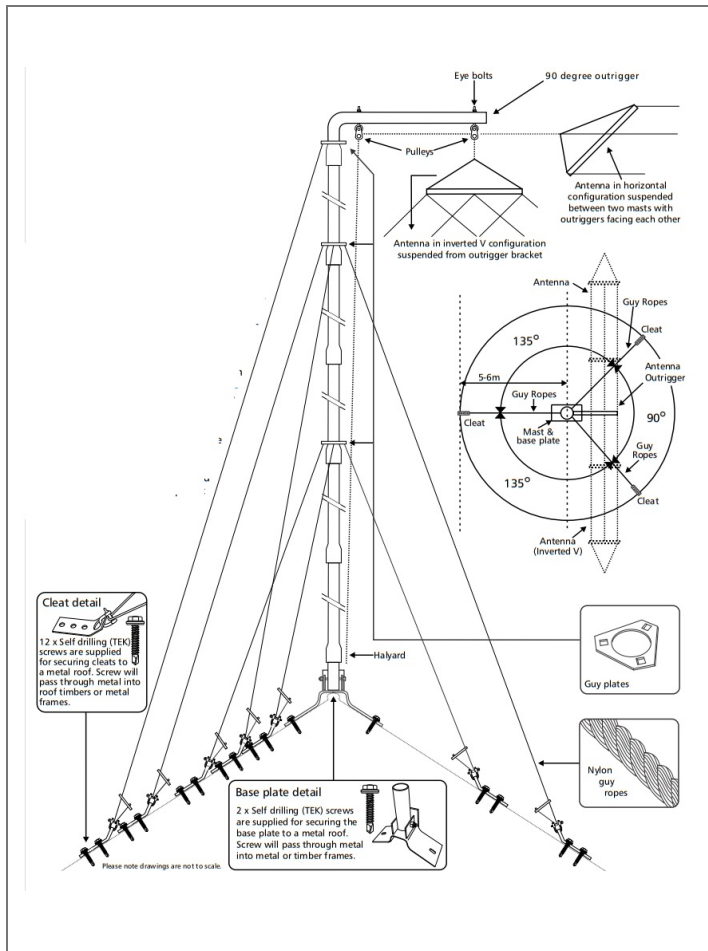
Packed dimensions: 2000 mm x 200 mm x 350 mm
Packed weight: 27 kg
Wind rating: 120 kph

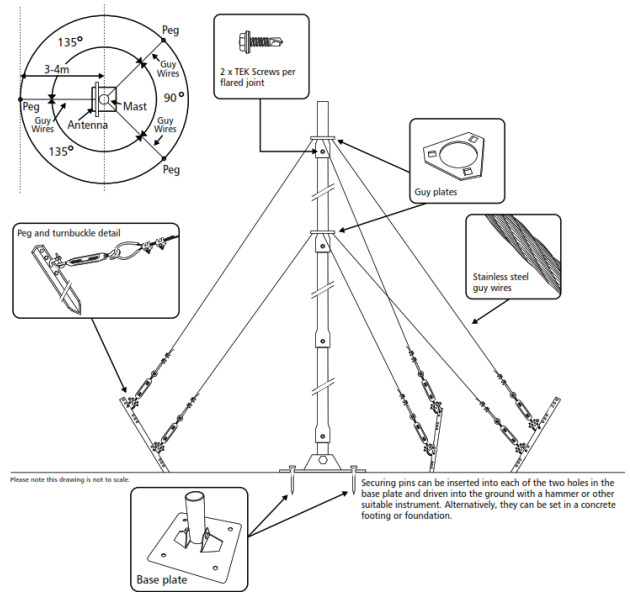
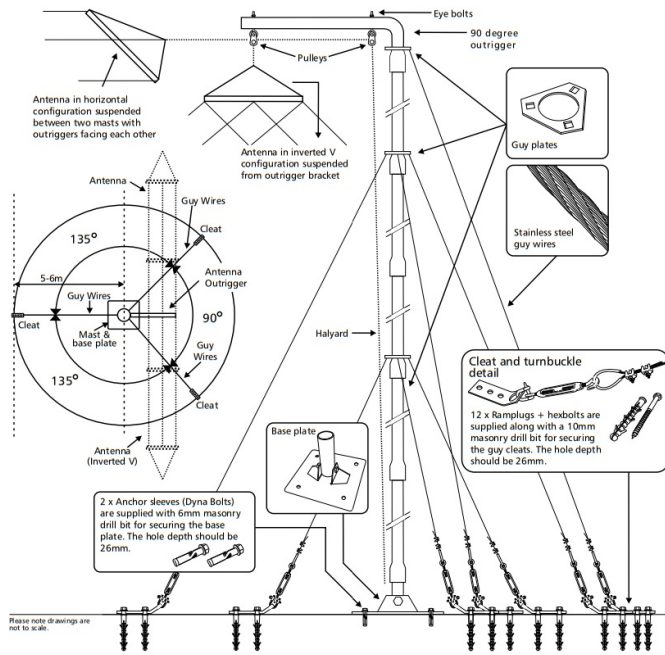
This air transportable mast consists of 2m aluminium 5 x sections with an m antenna support outrigger on the 0.85 top section. There are sets of guy rope and one back- 23 s stay guy rope to counter the weight of the antenna. The erection of the mast requires a minimum of two people. Atobe ll sections are assembled as shown below.Peg

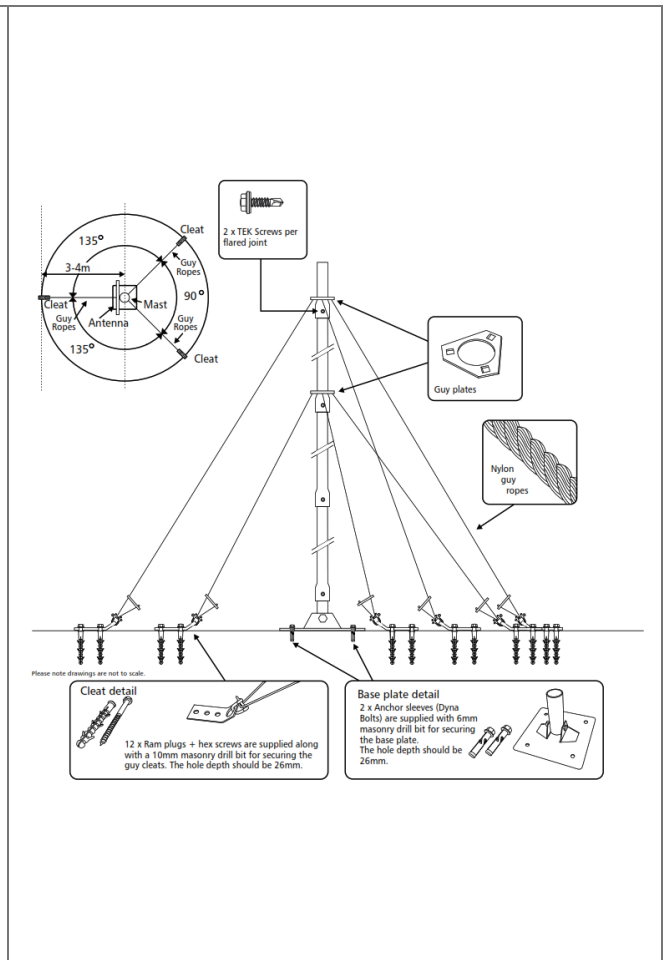
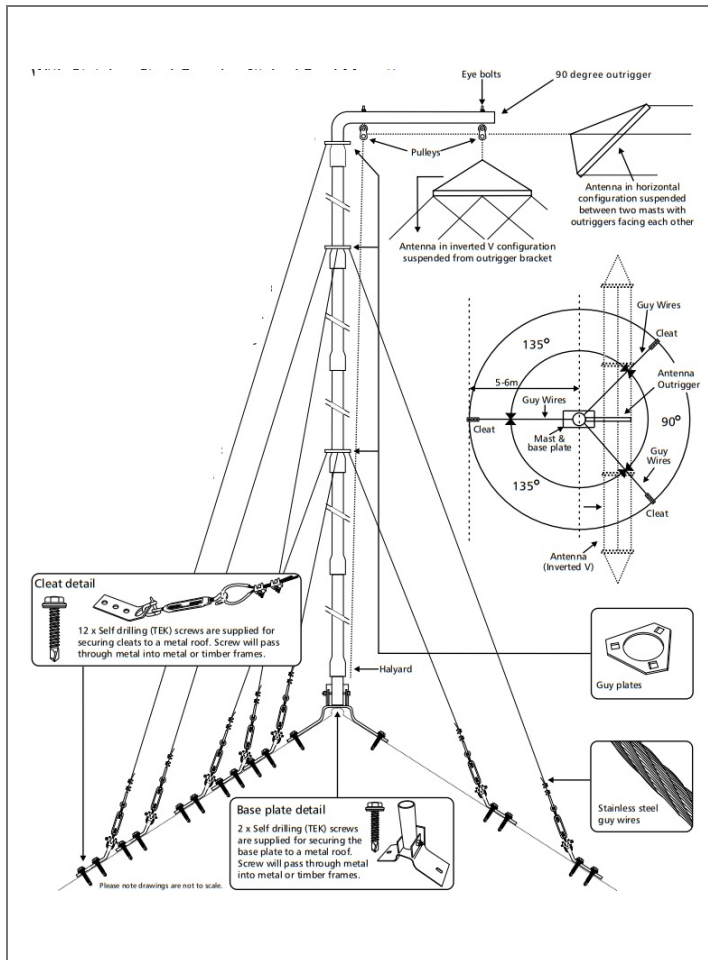
spacing should be m in 5 metres/ max 6 metres from the mast and at the angles shown below. Once the pegs and base plate have been positioned and secured, fit the guy ropes, lift the mast into position and tighten the guy ropes. Please note that the supplied hardware and fixings are suitable for most standard installations. However some, end user sourced hardware and fixings may be required for specific locations.

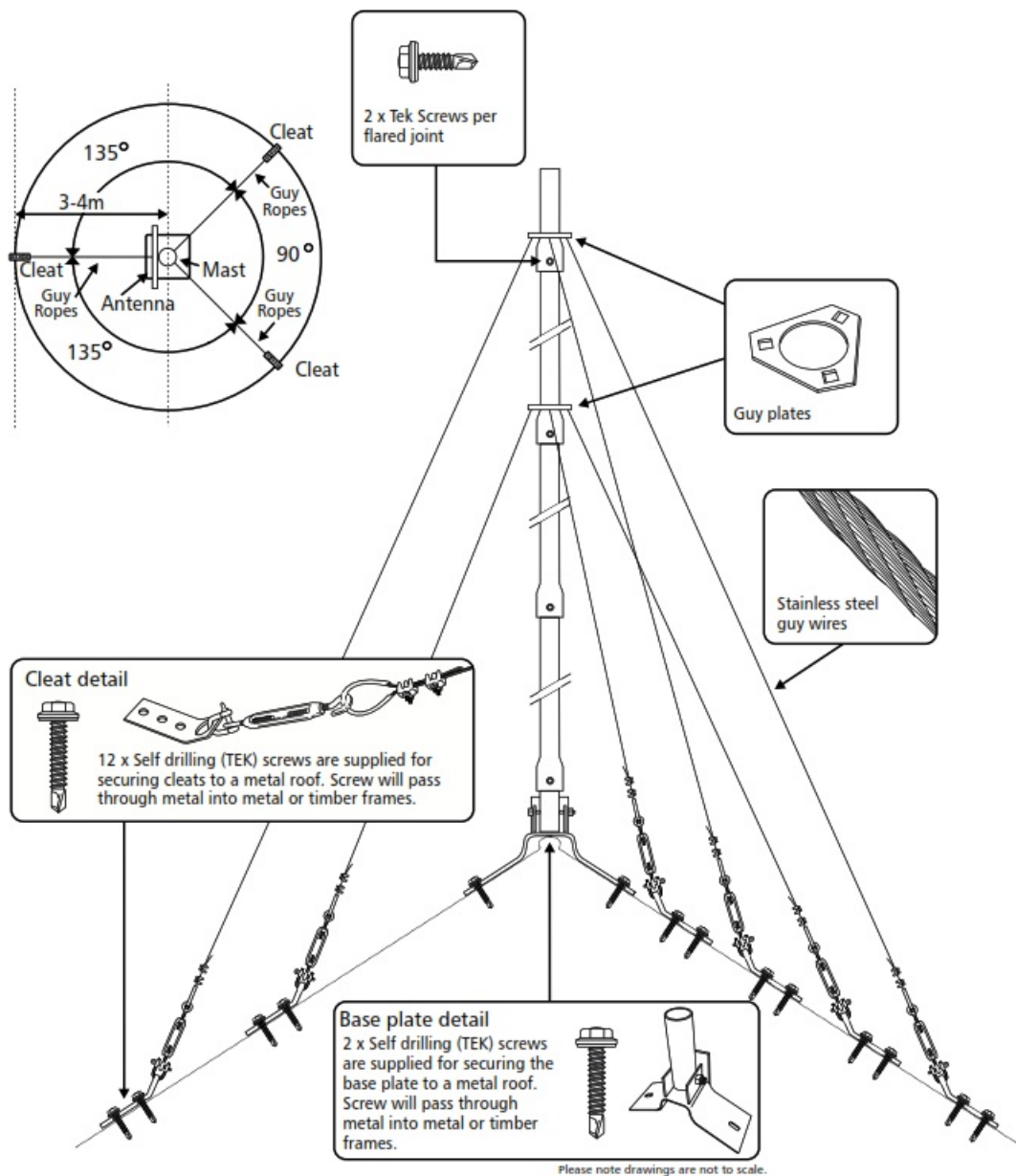










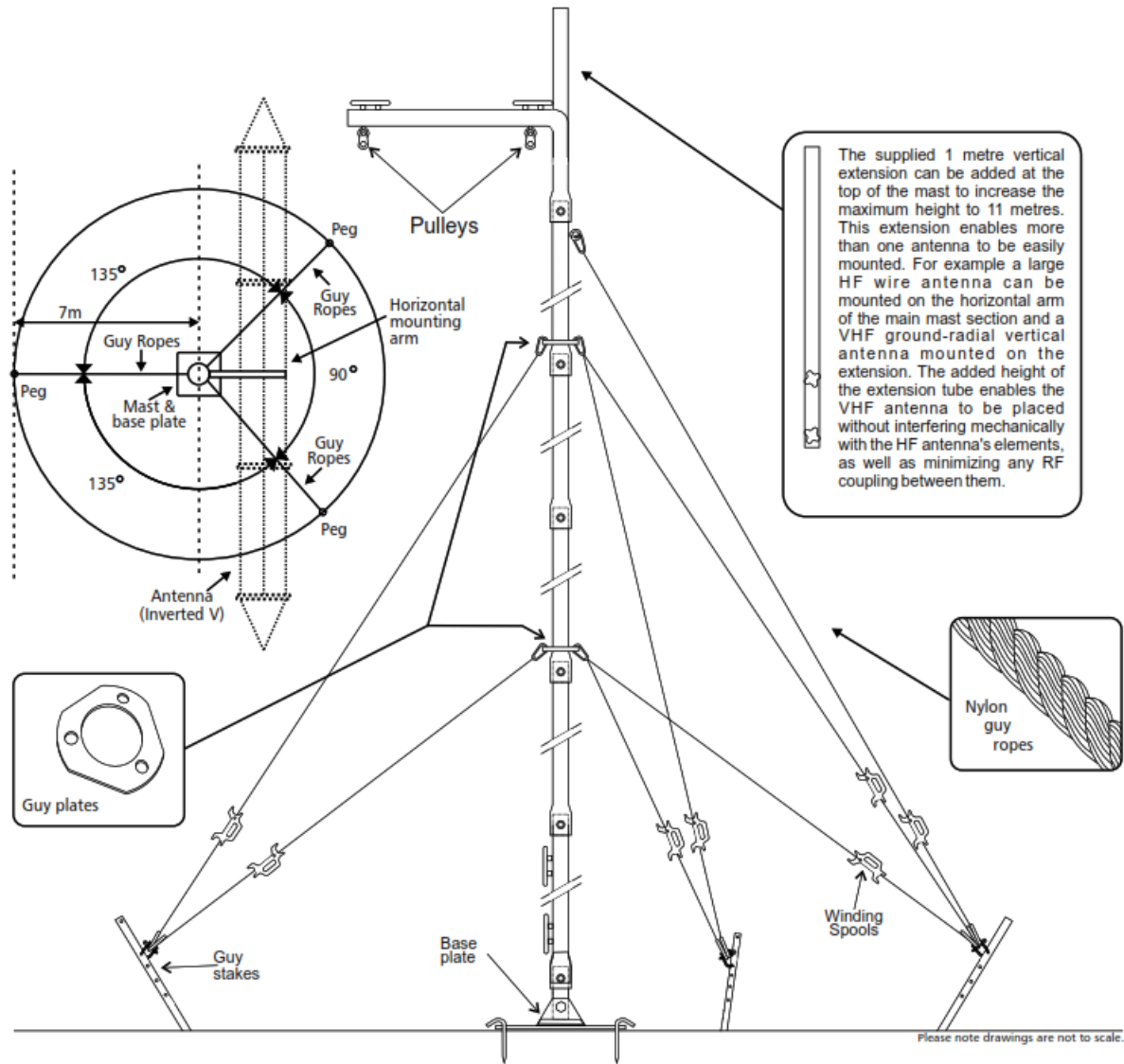


10 Metre Rapid Deployment Mast – (P/N 2090-02-21) Compatible Barrett antennas

HF 912 Single-wire broadband dipole 150 W	P/N: BC91201
HF 912 Multi-wire broadband dipole 150 W	P/N:BC 91200
HF 912 Multi-wire broadband dipole 500 W	P/N: BC91202
HF- Rapid deployment wire dipole antenna 1 W 50	P/N: 2090-02-01
HF- Rapid deployment broadband dipole antenna 1 W 50	P/N: 2090-02-03
HF Rapid deployment two wire broadband dipole 150 W	P/N: 2090-02-20c
VHF Tactical rapid deployment antenna	P/N 2086-02-10
VHF 30 to 108 z elevated wideband antenna MH	P/N: 2083-02-03
VHF 30 to 108 z centre-fed whip antenna MH	P/N: 2083-02-01

This rapid deployment air transportable 10m mast consists of 2.1-metre aluminium sections with collared end

joints. The collars are self-locking to prevent rotation/twisting along the length of the mast. Lower heights are achievable by using fewer sections. A tubular horizontal mounting arm, with pulleys, attaches to the top of the mast to enable large wire antennas to be raised in place once the mast is erected. A rope halyard is included for this purpose. In addition, a 1 metre vertical extension is also supplied (details below). Guy ropes and halyards are supplied on winding spools to facilitate rapid deployment of the mast. The mast is supplied with all components required for deployment. The complete mast kit is contained in a rugged canvas carry bag. The erection of the mast requires a minimum of two persons. Assemble all mast sections as per the diagram below. Peg spacing is m 7 in metres from the mast at the angles indicated the opposite. Once the pegs and base plate have been positioned, and the guy ropes attached simply lift the mast into position and tie off the guy ropes and tighten.



5 Metre Rapid Deployment Mast – (P/N 2090-02-04)
Compatible Barrett antennas

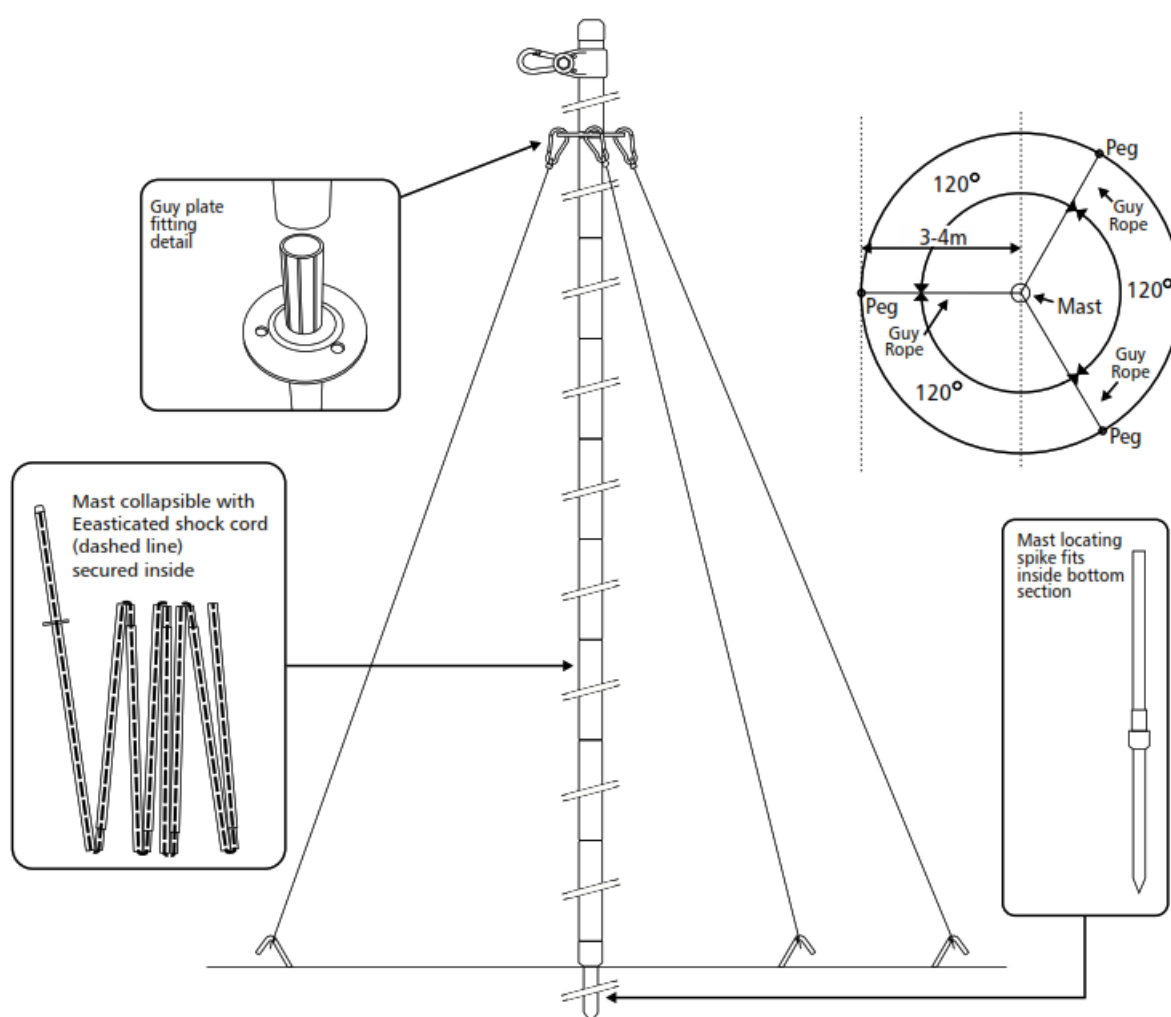
HF- Rapid deployment wire dipole antenna 1 W 50	P/N: 2090-02-01
HF- Rapid deployment broadband dipole antenna 1 W 50	P/N: 2090-02-03
HF- Long wire throw-out antenna	P/N: 2090-02-06

Specifications

Mast material: 25mm round aluminium tube, NATO Green.
Packed dimensions: L-830mm x W-220mm x H-140mm
Packed Weight: 6.2kg

The Barrett Rapid Deployment Mast is a lightweight, transportable pole construction kit for use as a temporary 5m tower solution in the field.

1. Place the mast on the ground. The 8 sections of the mast which are held together with an elasticated shock cord can now be fully extended.
2. Clip the guy ropes including winder/tensioner to the guy plate.
3. Attach the antenna to the snap hook at the top of the mast
4. Connect the coaxial cable to the antenna and secure to the length of the mast with the velcro loops provided
5. Drive the mast base locating spike into the ground for approx half its length then slide the grey collar over the top of the spike with the narrow end pointing up.
6. Drive the 3 pegs into the ground at 120-degree intervals 3-4metres from the mast pole as shown in the diagram below.
7. Raise the mast, sliding its base over the top of the locating spike. Tie off the guy ropes to the pegs once mast is in the correct position.



10 Metre Rapid Deployment Composite Mast (P/N 0 -02-) 290 24
Compatible Barrett antennas

VHF 30 to 108 z elevated wideband MH VHF antenna	P/N: 2083-02-03
HF-Rapid deployment wire dipole antenna 1 W 50	P/N: 2090-02-01
HF-Rapid deployment broadband dipole antenna 1 W 50	P/N: 2090-02-03
HF-Long wire throw-out antenna HF	P/N: 2090-02-06
Rapid deployment of two wire broadband dipole 150 W	P/N: 2090-02-20

Specifications

Retracted height 1 m 960m

Mast Material: Composite telescopic tube, Black.

Packed Weight: 8.6kg

Mast Kit Contents

Base Plate Qty 1

Offset bracket Qty 1

Tent Pegs Qty 4

Guy Anchors Qty 3

Long Guy Ropes Qty 3

Short Guy Ropes Qty 3

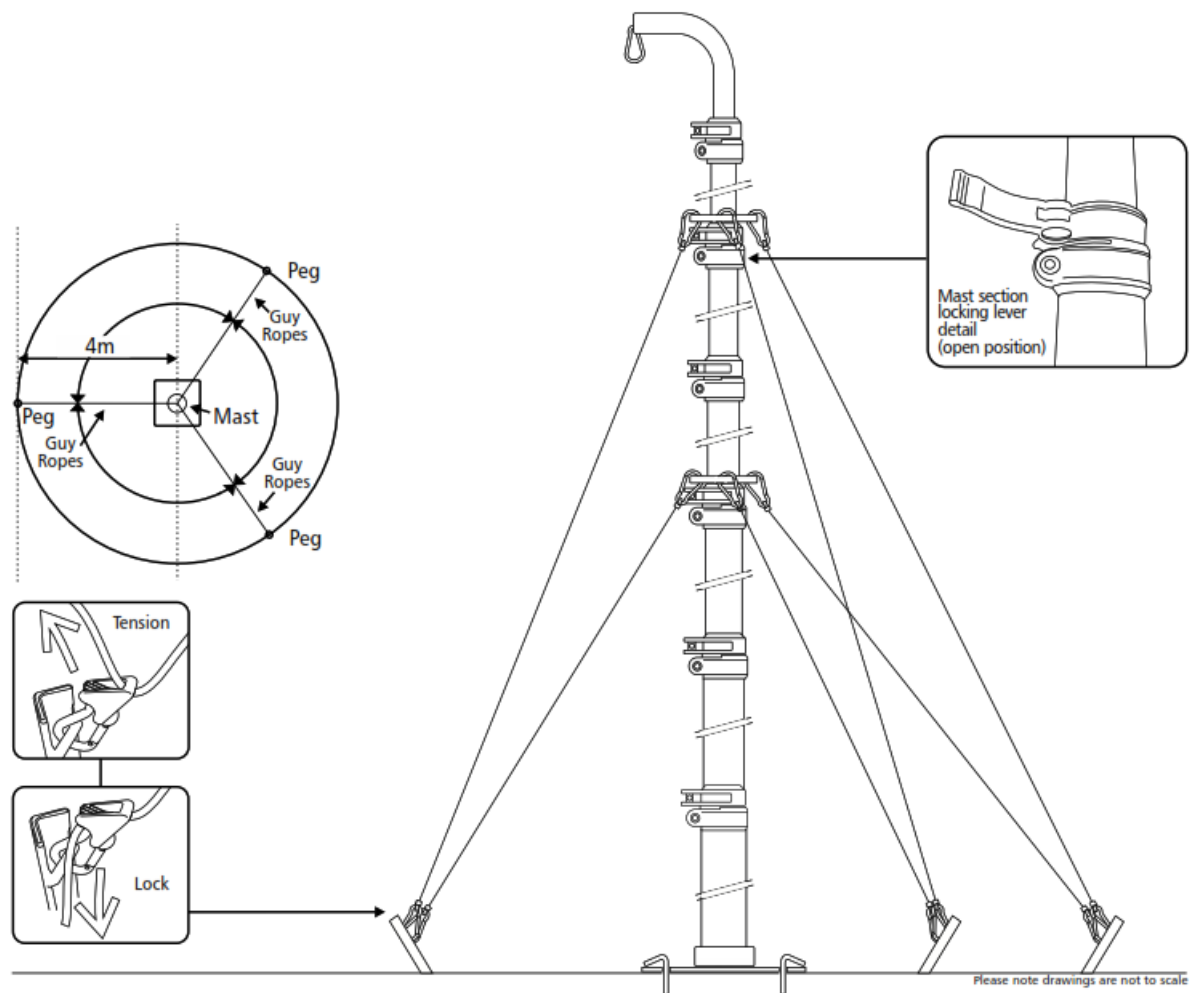
Mast Qty 1

Hammer/Mallet Qty 1

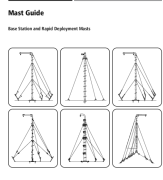
Carry Bag Qty 1

Instructions Qty 1

This rapid deployment mast consists of 7 sections (including the offset bracket) of the composite tube which is extended telescopically with locking levers. The mast can be erected to any desired height. The last extension at the top of the mast (thinnest section) is only suitable for very light head loads. Guy ropes were re-supplied on winding spools to facilitate a rapid deployment of the mast. The mast is supplied with all components required for deployment. The complete mast kit is contained in a rugged canvas carry bag. Please note a halyard for raising an antenna is not included. The erection of the mast requires a minimum of two persons. Peg spacing is m 4 in metres from mast at the angles indicated below. Once the pegs and base plate have been positioned and the guy ropes attached, simply extend the mast sections to the desired height locking off each section as required. Once the mast is at the correct height, tie off the guy ropes and tighten. The guy ropes (once tensioned) are secured with the "Clam Cleats" which are attached to the guy rope snap locks. Pull the guy rope up to tension and then pull down with the rope in the cleat groove as shown below.



Documents / Resources

 <p>Mast Guide Base Station and Rapid Deployment Masts</p>	<p>BARRET BCM90204 Base Station and Rapid Deployment Masts [pdf] User Guide BCM90204, Base Station and Rapid Deployment Masts, Rapid Deployment Masts, Base Station, Deployment Masts, BCM90204, Masts</p>
--	--