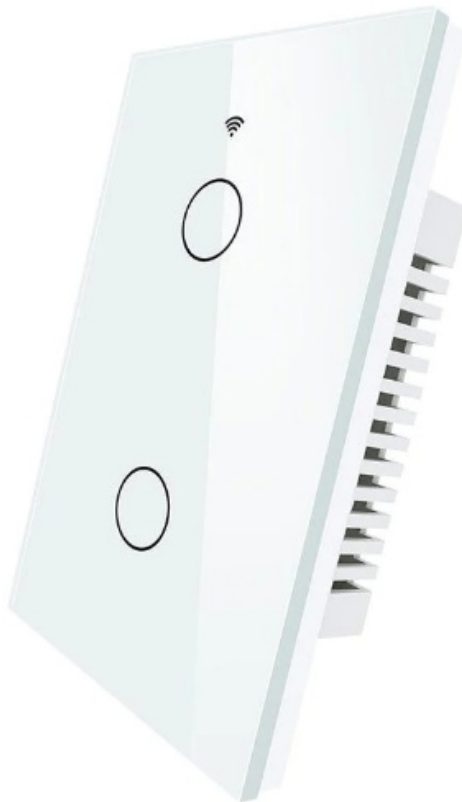




BAREP BSM-003 Smart WiFi Touch Switch User Manual

[Home](#) » [Barep](#) » BAREP BSM-003 Smart WiFi Touch Switch User Manual 

BAREP BSM-003 Smart WiFi Touch Switch User Manual



Contents

- [1 PRODUCT OVERVIEW](#)
- [2 PRODUCT FEATURE](#)
- [3 How to Get the device working](#)
- [4 PRODUCT STRUCTURE](#)
- [5 Button activities and LED indicator](#)
- [6 PRODUCT SPECIFICATIONS](#)
- [7 ADD DEVICE](#)
- [8 Blink slowly mode](#)
- [9 Delete devices](#)
- [10 FCC NOTICE](#)
- [11 Documents / Resources](#)
- [12 Related Posts](#)

PRODUCT OVERVIEW

- This smart Wi-Fi touch switch allows you to easily turn it on or off through Alexa & Google and other smart speakers. It doesn't need you to walk in the room to control, bringing great convenience and comfort to life. Meanwhile, it supports remote intelligent control of your lights through Smart Life APP application software. With timing and countdown functions, it's very convenient to preset the switch to turn on or off the light at a certain time point.

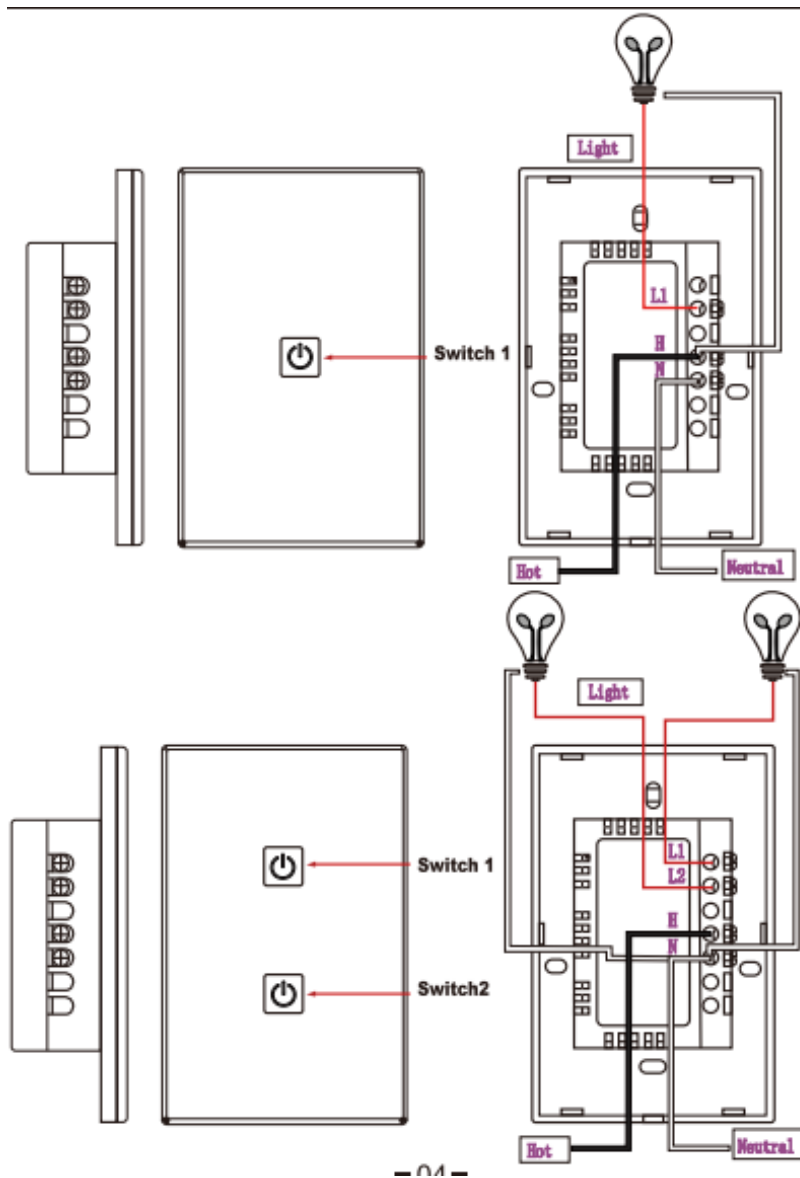
PRODUCT FEATURE

- Google and other smart speakers
- **APP control:** support remote control through Smart Life APP
- **Timing:** support timing, countdown
- **Switch function:** support local manual on/off
- ETL, FCC certified

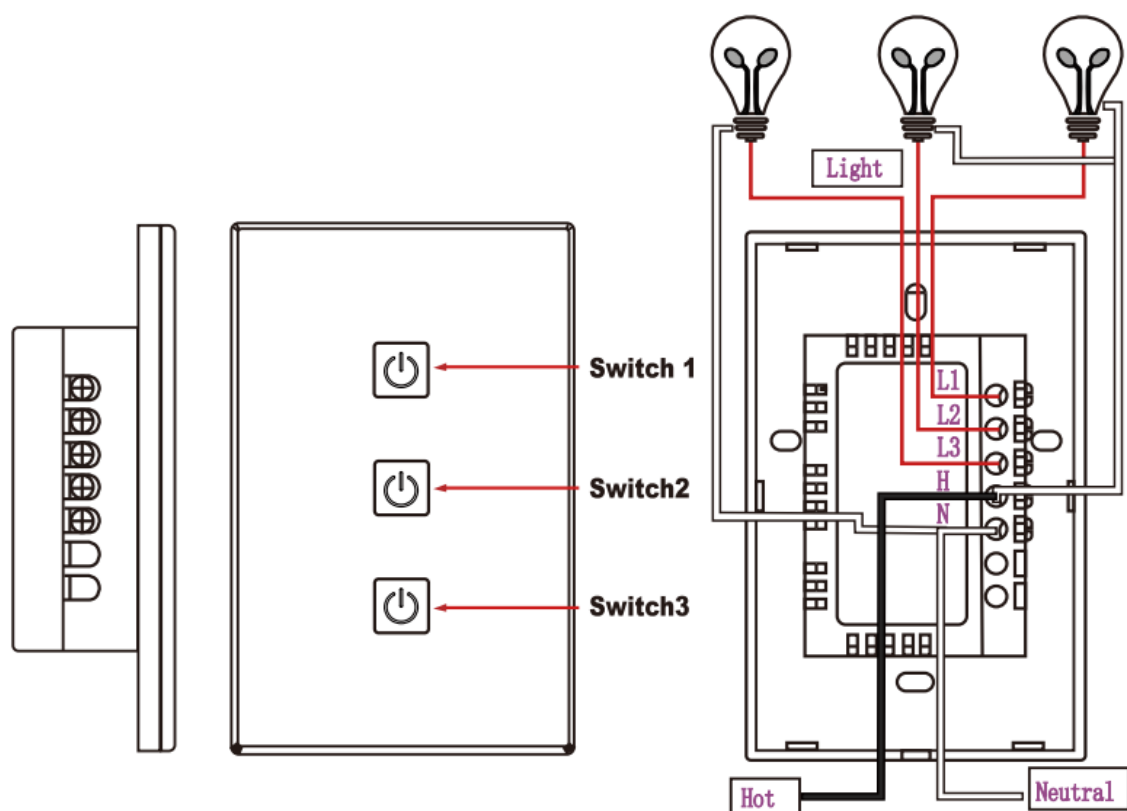
How to Get the device working

- Make sure your Wi-Fi network works in 802.11b/g/n 2.4GHz and internet available;
- Download the APP Play; from Apple store or Google
- Register an account in APP and login with your email address or Mobile phone number; necessary;
- Setup the device Wi-Fi connection;
- Mount device on specified location;
- Test and check the Device and APP working state;
- Check working with Alexa and Google Home if necessary.

PRODUCT STRUCTURE



- 04 -



Button activities and LED indicator

1. Press and hold the Switch1 for at least 5 seconds to enter into Wi-Fi connection (or configuration). The blue LED indicator will blink quickly or slowly blink rapidly connection s set as default in Wi-Fi configuration. Press and hold the button for 5 seconds will enable the device switch between blink quickly and slowly
2. Short press the button to manually on/off control the device. The Green LED indicator will light on/off when receptacle is on/of.

PRODUCT SPECIFICATIONS

Input voltage range	AC 90-135V,60HZ
Nominal input voltage	AC 120V
Rated current	10Amax
Standby Power Loss	s1.ow
Wireless transmitting and receving frequency	Wi-Fi: 2412MHz-2462MHz BI E: 2402-2480MHz.
Network protocol supported	TEEEB02. 11 bign BLE5.2
Encryption type	WEP/TKIP/AES, WPS
Working temperature	10— +40C
Storage temperature	-20-+60C
Relative humidity	8% B0%RH

NOTE

- This product is intended for indoor use only in dry locations.
- Please ensure the security of electricity: Max. current load cannot be higher than 10A; Max. power load cannot be higher than 1200W.

Scan the QR code below to download APP for Android nd iOS system. Or you cqr

an download the“Smart Life” APP on Apple Store and Google Play.



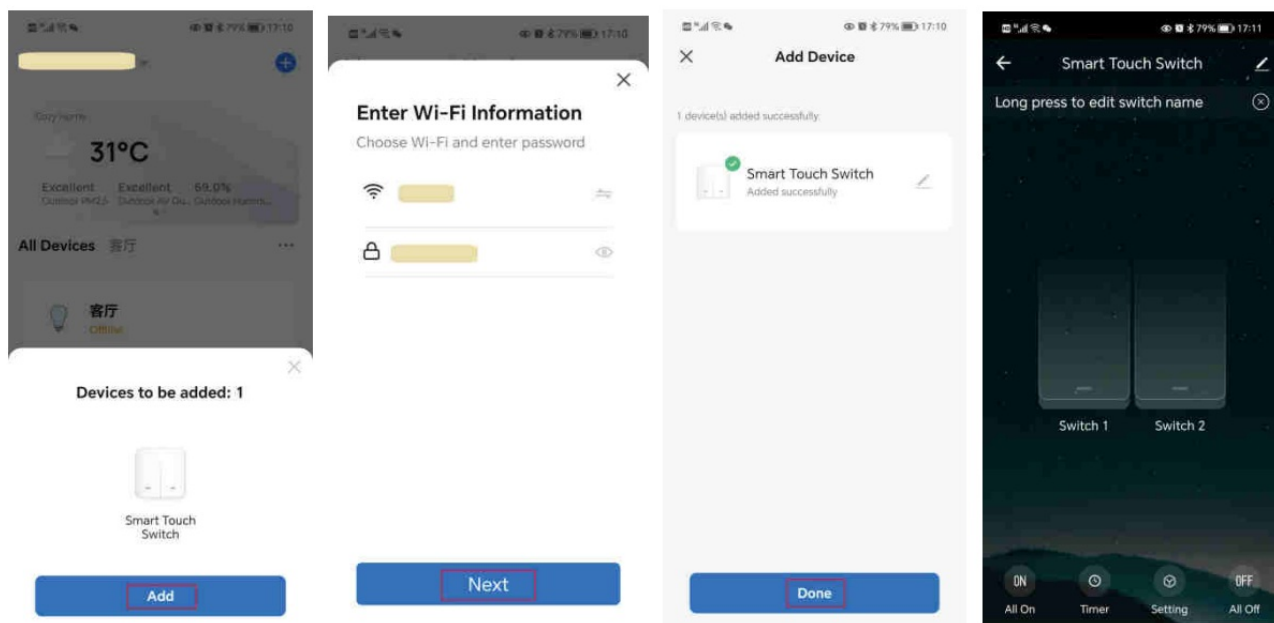
For the first download, please click the “Register” button to register. If you already have an account, click the “Login” button

The image shows the registration and login interface of the Smart Life app. On the left, a grey overlay titled "Complete the account" contains a "User Agreement and Privacy Policy" section. It includes a paragraph about privacy and service terms, followed by links for "Privacy Policy", "User Agreement", "Children's Privacy Statement", and "Third Party Information Sharing List". Below this is a blue "Agree" button and a grey "Disagree" button. At the bottom of the overlay is a blue "Complete the account" button. On the right, the main app interface is visible. It features a blue header with a back arrow and a "Register" button. In the center is the Smart Life house icon. Below the icon are two buttons: a blue "Log In" button and a white "Try as Guest" button. At the bottom, there are links for "Privacy Policy", "User Agreement", "Children's Privacy Statement", and "Third Party Information Sharing List", along with social media icons for WeChat and QQ.

ADD DEVICE

BLE network configure mode

When the device is out of network, make sure to turn on the mobile phone Bluetooth and connect the mobile phone to the Wi-Fi router.
Then open the Smart Life AP, the Bluetooth will automatically configure the network and the device to be added will pop up on the APP by itself



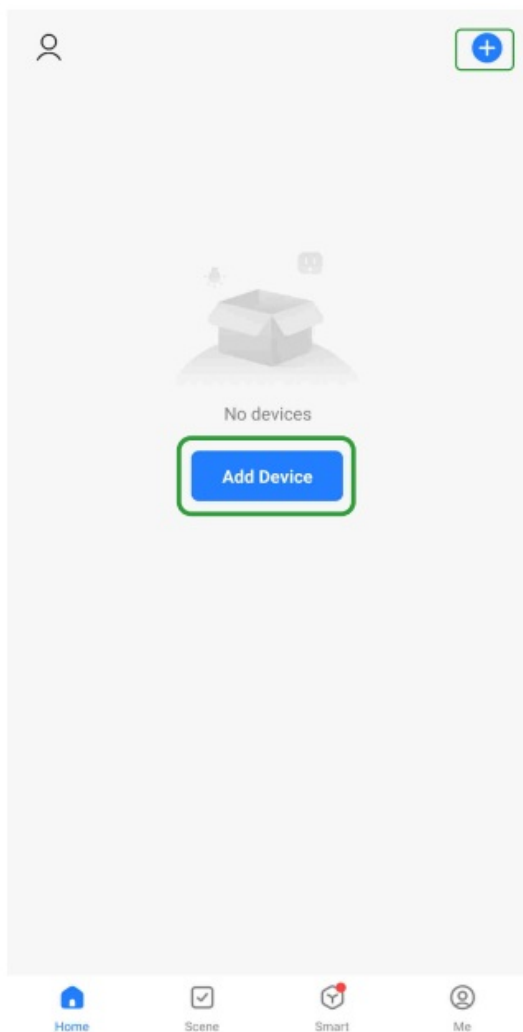
Wi-Fi network configure mode

Notice: The Bluetooth of the mobile phone must be turned off, otherwise it will be under BLE configure mode as default

Click “Add device” or “+” in the upper right corner, select “Electrical” and “Switch (Wi-Fi)”, enter the Wi-Fi account and password, and click “Next” to enter the

“Reset the device” interface

Power on the device, long press Switch1 for 5 seconds to enter the Wi-Fi connection (or configuration), and the green LED indicator of Switch 1 flashes rapidly,

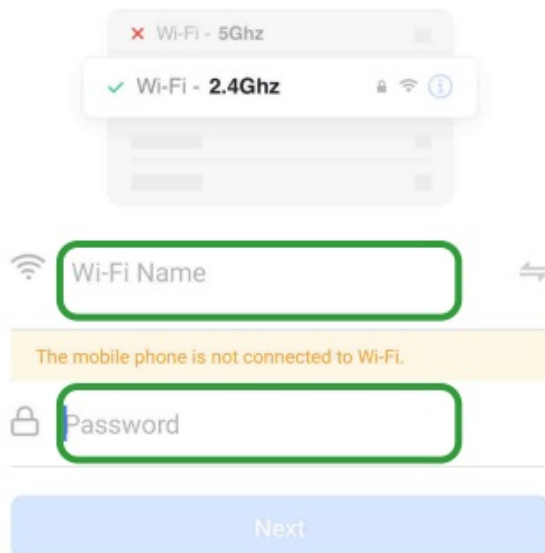


interface, click “Confirm the indicator is blinking”, select Blink Quickly’, wait for the device to be connected until the device is added successfully, then click *Finish” to enter the device operation interface and complete the device addition.



Select 2.4 GHz Wi-Fi Network and enter password.

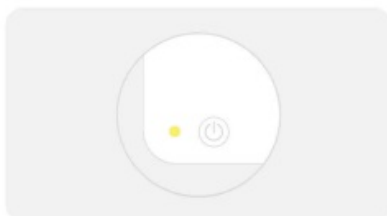
If your Wi-Fi is 5GHz, please set it to be 2.4GHz.
[Common router setting method](#)



The interface shows a Wi-Fi selection screen. At the top, there's a header with a close button (X) and a toggle for 'Wi-Fi - 5Ghz' (which is turned off). Below this, a list of available networks is shown. The first network is 'Wi-Fi - 2.4Ghz' with a green checkmark, indicating it's the selected network. Below the network list, there's a text input field for 'Wi-Fi Name' and a password input field. A yellow warning banner states 'The mobile phone is not connected to Wi-Fi.' Below the password field, there's a blue 'Next' button.



Reset the device



Power on the device and confirm that the indicator is blinking rapidly.
Note: please complete the network distribution within 3 minutes after resetting the device.

Confirm the indicator is blinking

[Reset Device Step by Step](#)



Wi-Fi Mode ➡

Reset the device



Press and hold the RESET button for 5 seconds until the indicator blinks (subject to the user manual).

Select the status of the indicator light or hear the beep:

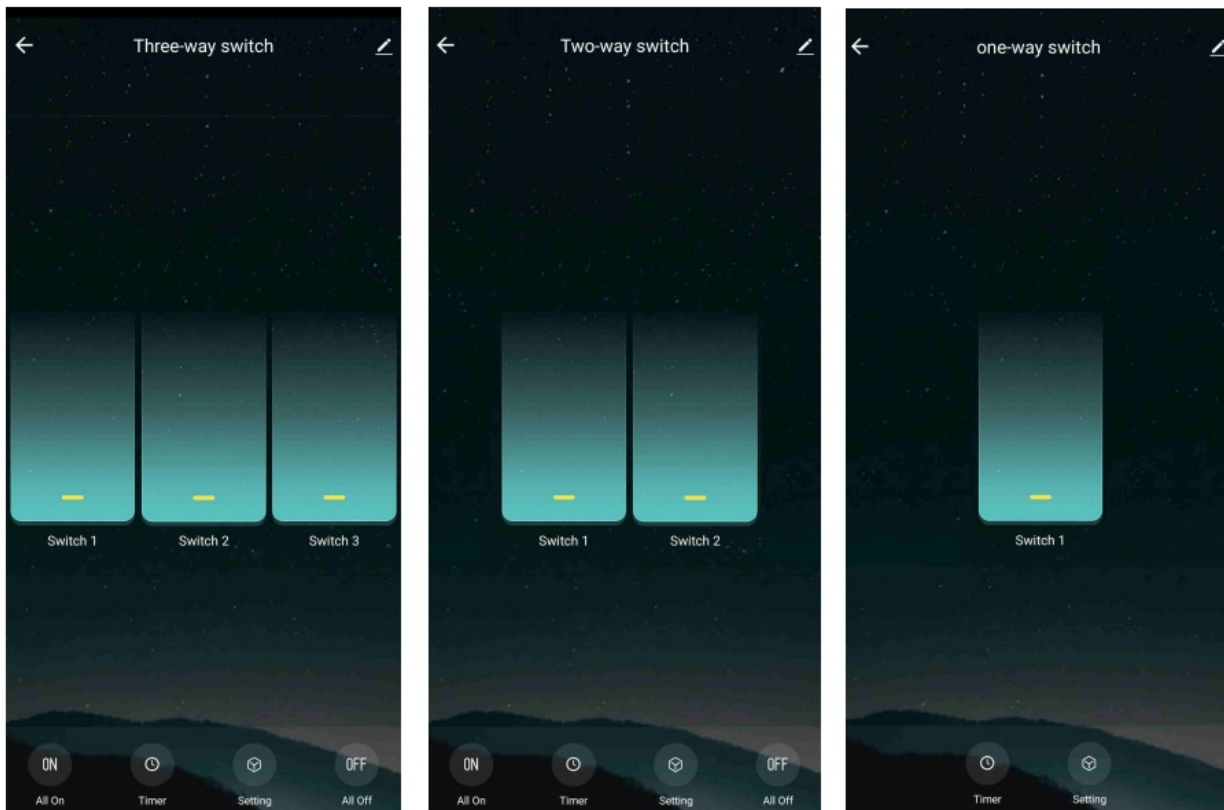
Blink Slowly



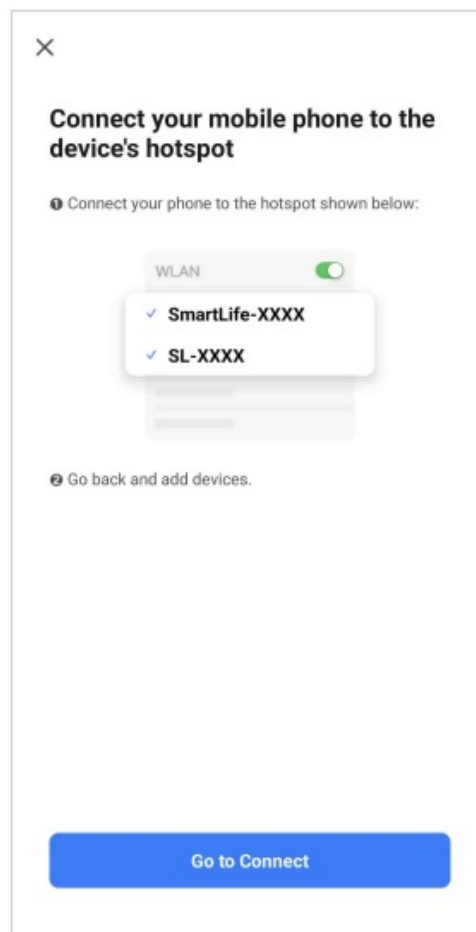
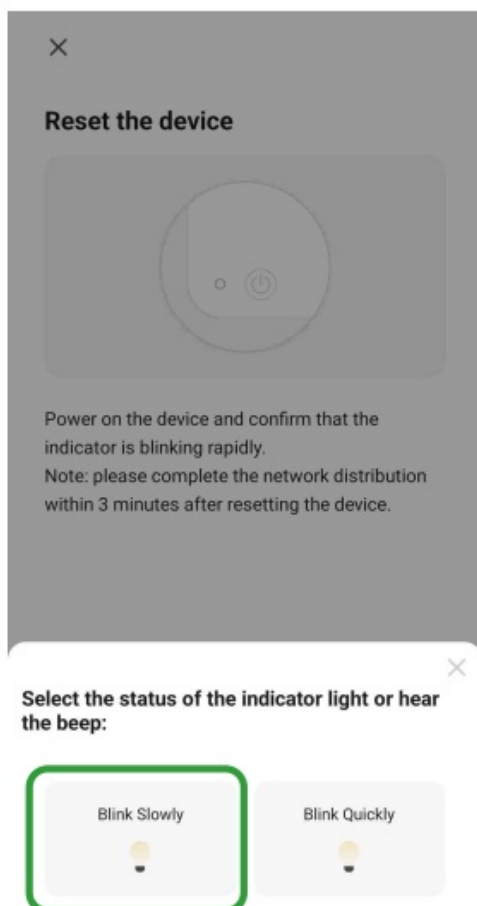
Blink Quickly

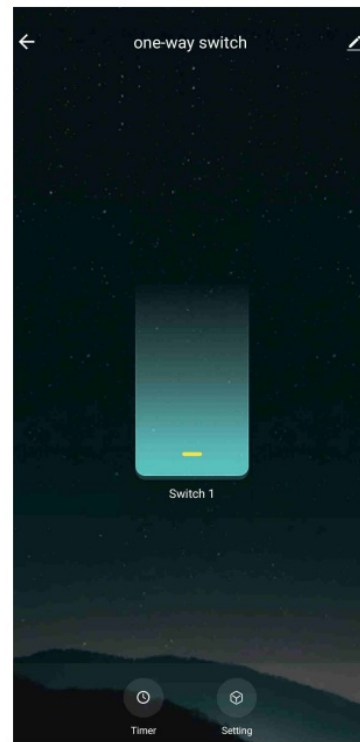
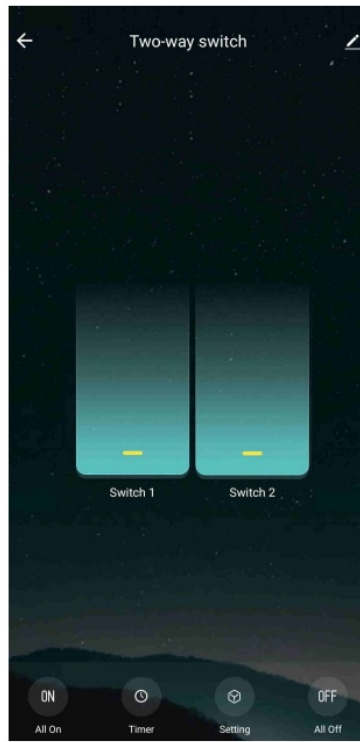
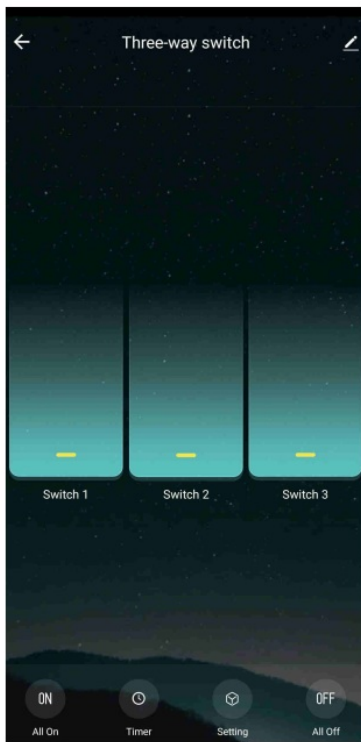


Blink slowly mode



Long press Switch1 for 5 seconds to enter the Wi-Fi connection (o configuration). The green LED indicator of Switch1 flashes slowly to enter the “Reset the device” interface. Click “Confirm the indicator is blinking’, select “Blink slowly” to enter the “Connect your mobile phone to the devices hotspot” interface. Open the WiFi list of smart phones, select SmartLife – XXXX, and return after the connection is successful. Wait for the. device to connect until the device is added successfully. Click *Finish’ to enter the device operation interface and complete the device addition.

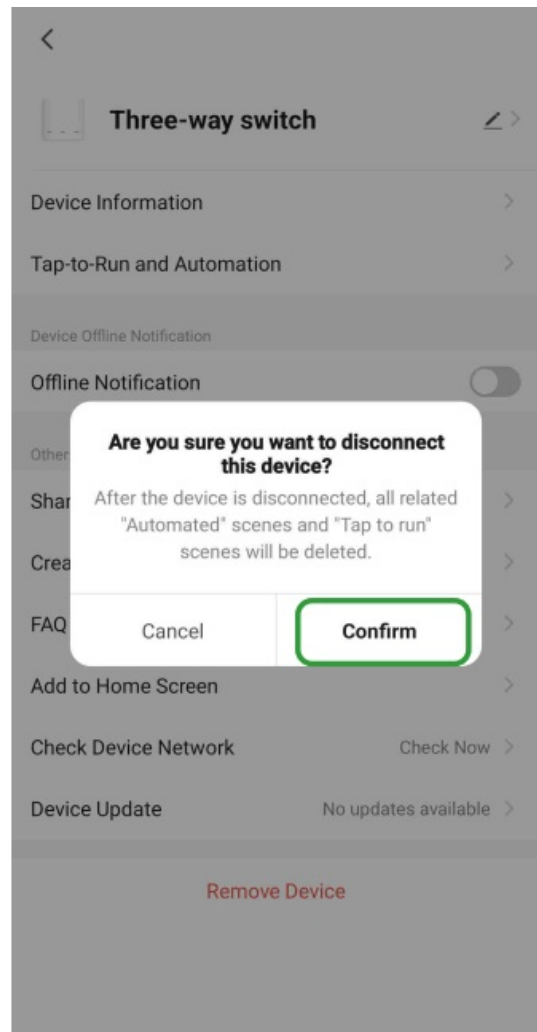
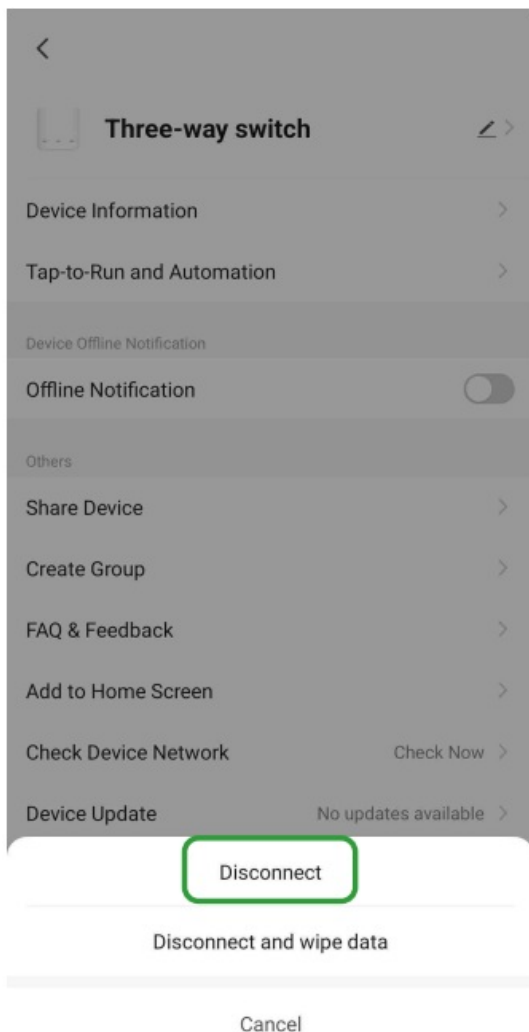
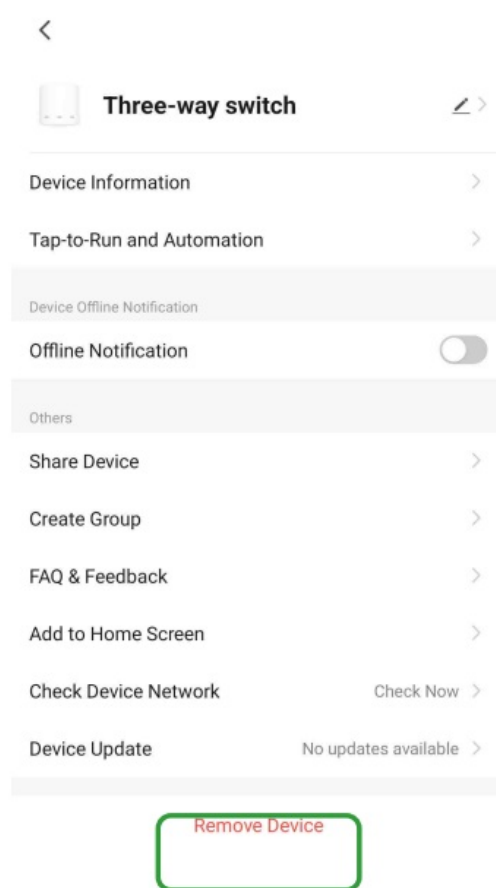
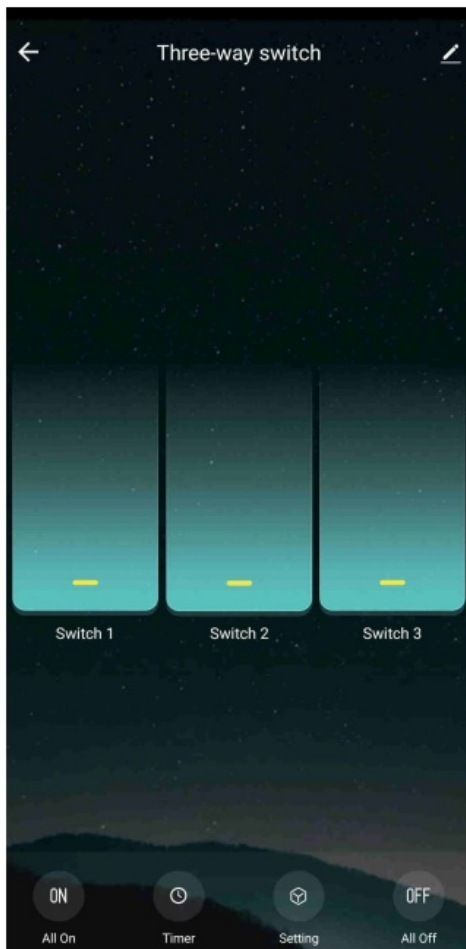




The user can rename the device after it is connected. Click the “switch button” on the main interface of the device to control on/off.

Delete devices

Click the sign in the upper right corner of the device main interface, and click “Remove Device”, select “Disconnect” and then click “Confirm” to remove this device from APP. Select “Disconnect and wipe data” and then click “Confirm” to remove this device from APP and all related data will be wiped.



FCC NOTICE

This device complies with Part 15 of the FCC Rules Operation s subject to the following two conditions: this device may not cause harmful interference, and (2) this device must accept any interference received, including interference that may cause undesired operation.

Changes or modifications to this unit not expresslyapproved by the party responsible for compliance could void the user’s authority to operate the equipment.


NOTE: This equipment has been tested and found to comply with the limits for a Class B digital device, pursuant to Part 15 of the FCC Rules. These limits are designed toprovide reasonable protection against harmul interference in a residential installation. This equipment generates uses and can radiate radio frequency energy and, if not installed and used in accordance with the instructions,may cause harmful interference to radio communications. However, there is no guarantee that interference will not occur in a particular installation. If this equipment does cause harmful interference to radio or television reception, which can be determined by turning the equipment off and on, the user is encouraged to try to correct the interference by one or more of the following measures:

- Reorient or relocate the receiving antenna.
- Increase the separation between the equipment and receiver.
- Connect the equipment nto an outlet on a circuit different from that to which the receiver is connected
- Consut the dealer or an experienced radio/TV technician for help.

RF Warning statement

This equipment complies with FCC radiation exposure limits set forth for an uncontrolled environment. This equipment should be installed and operated with a minimum distance of 20cm between the radiator & your body. This transmitter must not be co-located or operating in conjunction with any other antenna or transitter.

Documents / Resources

	<p>BAREP BSM-003 Smart WiFi Touch Switch [pdf] User Manual 2A3RZ-BSM-003, 2A3RZBSM003, bsm 003, BSM-003, Smart WiFi Touch Switch, BSM-003 S mart WiFi Touch Switch, WiFi Touch Switch, Touch Switch, Switch</p>
---	---