

B&G

BandG ZEUS SR
Chart Plotter



BandG ZEUS SR Chart Plotter User Guide

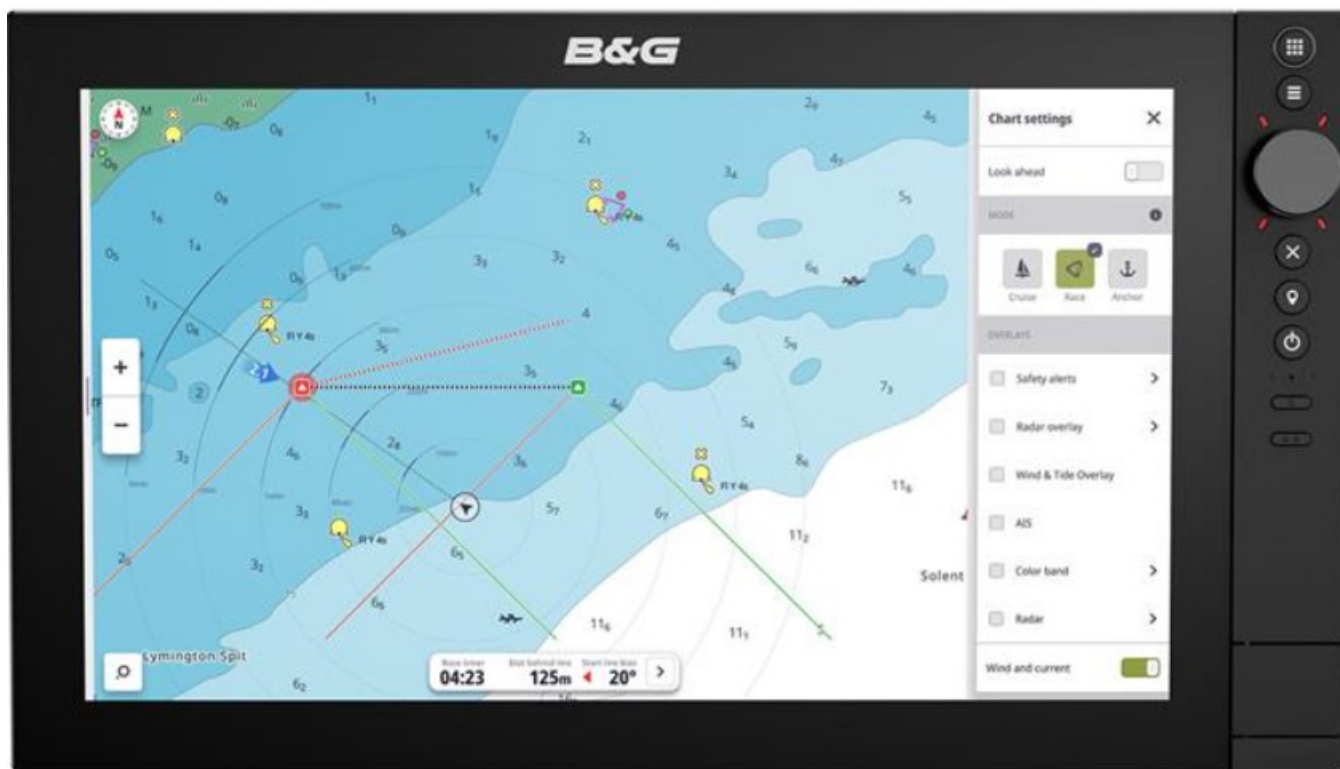
[Home](#) » [BandG](#) » BandG ZEUS SR Chart Plotter User Guide 

Contents

- [1 BandG ZEUS SR Chart Plotter](#)
- [2 Product Information](#)
- [3 BASIC CONTROLS](#)
- [4 FIRST STARTUP](#)
- [5 SETUP GUIDE](#)
- [6 QUICK ACCESS MENU](#)
- [7 HOME SCREEN](#)
- [8 EMERGENCY AND MOB](#)
- [9 CONNECT TO MOBILE APP](#)
- [10 FAQ](#)
- [11 Documents / Resources](#)
 - [11.1 References](#)
- [12 Related Posts](#)

B&G

BandG ZEUS SR Chart Plotter



Product Information

Specifications

- Model Number: 988-13244-001
- Language: English
- Features: Touchscreen, Quick Access Menu, Apps, Alerts
- Power Control: External power control

ZEUS® SR

QUICK START GUIDE

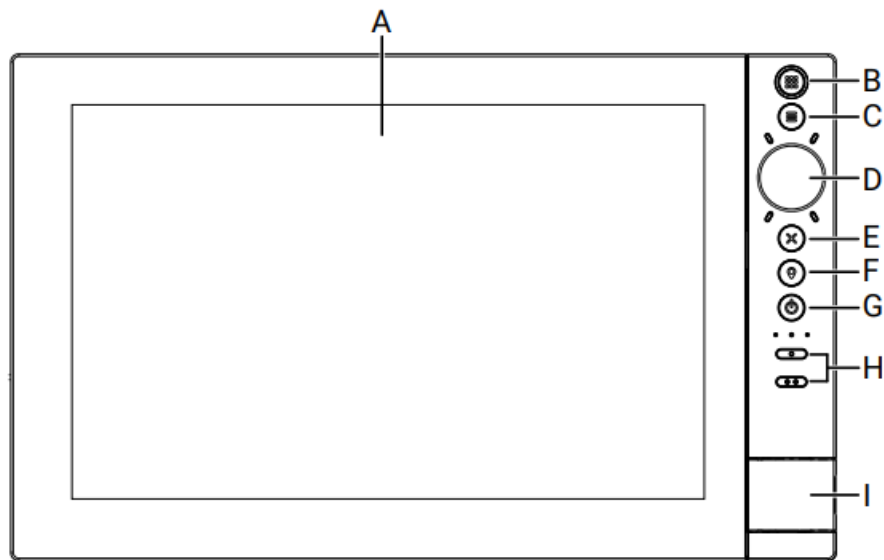
This document describes the basic controls of the B&G Zeus® SR multi-function display (MFD).

For the latest version of this document and other app guides, download the B&G mobile app, scan the QR code®, and connect with your Zeus® SR, or visit: www.bandg.com/downloads/zeus-sr.

Note: Refer to the enclosed installation manual before you turn on the unit.

BASIC CONTROLS

- To turn the unit on, press and hold the power button (G). A beep indicates the unit is powering up.
- To turn the unit off, press and hold the power button, or select Power off from the quick access menu.



- A Touchscreen
- B Home
- C App Menu
- D Scroll wheel
- E Exit
- F Waypoint
- G Power
- H Customizable keys
 - 1x 10" unit
 - 2x 12" and 16" units
- I Memory card door

External power control

Power to the unit can be controlled by an external switch or other units. For details about available power options, refer to the unit's installation manual.


Note: If your MFD is controlled by an external power source, it can't be powered off using the power button. Instead, pressing and holding the power button puts the unit in standby mode. To wake the unit, press the power button again.

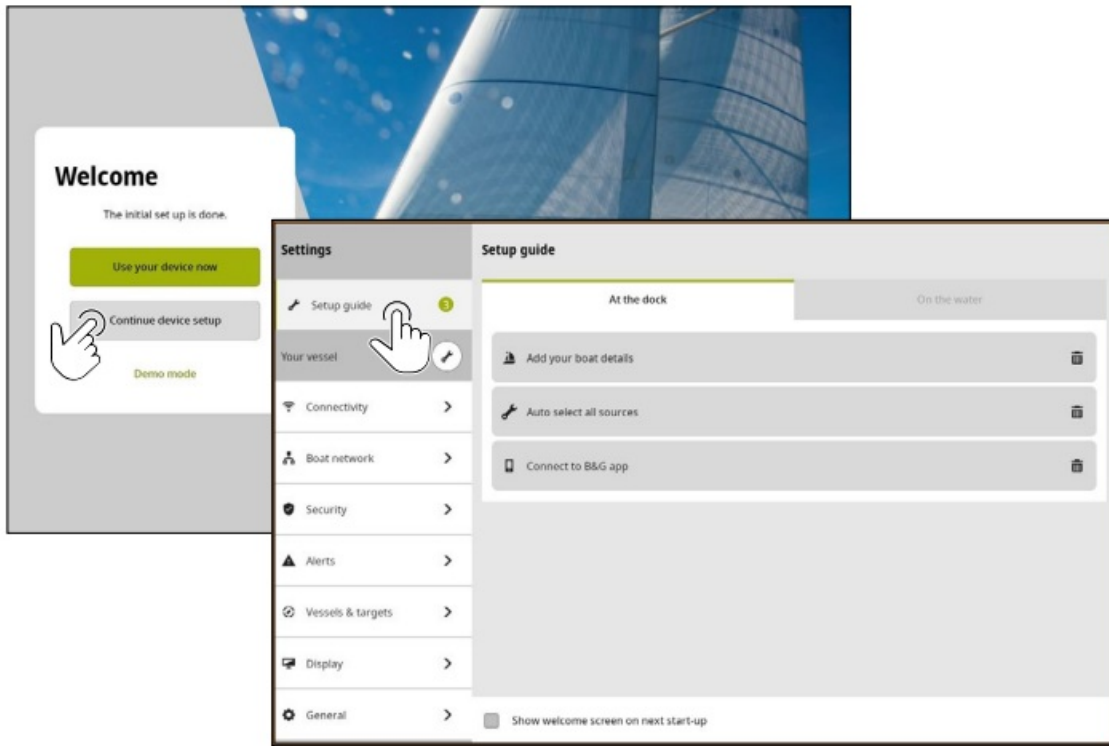
FIRST STARTUP

When you start the unit for the first time, or when you start it after a factory reset, you need to complete the initial setup for language, country, timezone, boat network, and follow the on-screen prompts.

SETUP GUIDE

On the Welcome screen, select Continue device setup to complete the device settings. Alternatively, select the

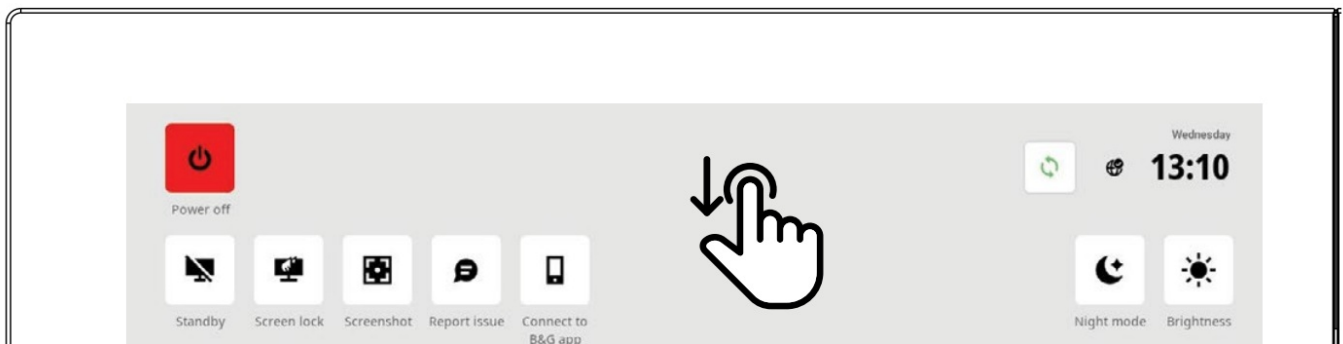
settings icon  , located on the home screen, then select Setup guide to set up the unit.



Note: It is important to set up the MFD for accurate navigation and safety at sea.

QUICK ACCESS MENU

The quick access menu gives you immediate access to basic system settings and features. Press the power button once to display the quick access menu, or swipe down from the top of the screen.



Note: To hide the quick access menu, swipe up or tap anywhere on the screen.

APPS

An app is a program for a unique feature or function. The availability of some apps depends on the size of your unit and the hardware that is connected.

For app-specific user guides, download the B&G app on your mobile device and connect it to your display unit, or visit: www.bandg.com/downloads/zeus-sr.

HOME SCREEN



Select the activity bar icon to open the activity bar, and select it again to access your home screen. You can access all apps, settings, and alert messages from the home screen.

- A Home — select to view the home screen
- B Alerts list — select to view recent and historic system alerts
- C Settings — select to view MFD settings
- D Status bar — displays the current day and time, along with the status of cloud sync, navigation, and internet connection
- E Apps — a grid layout of all system and custom apps
- F Exit — select to exit the home screen and return to the last-used app

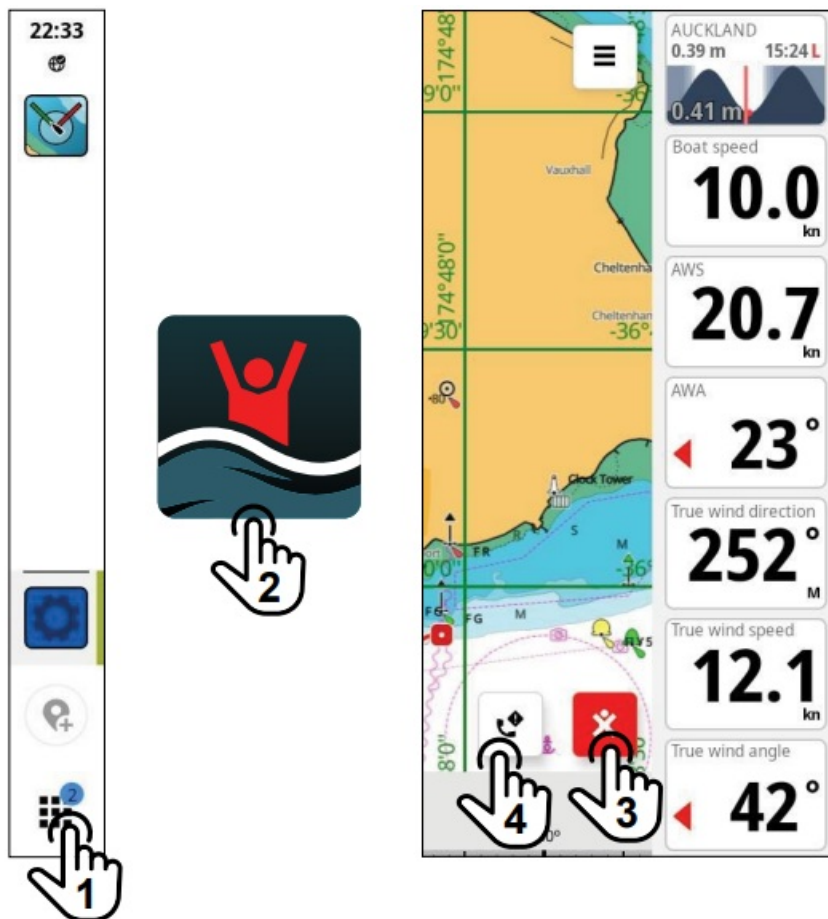


Note: Exit is disabled if there are no active apps.

EMERGENCY AND MOB

Use the person overboard (MOB) app for emergency situations. To open the app, select the MOB icon (2) on the home screen.

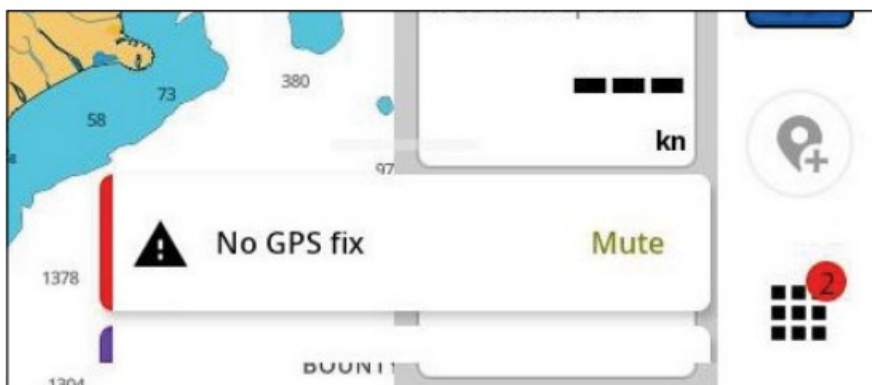
Select the overboard marker (3) to create a MOB waypoint at your vessel's location. Now select the call assistance button (4) Follow the instructions to respond to the emergency.



Note: Use the Waypoints & Routes app to remove your MOB waypoint.

ALERTS

The unit continuously monitors connected sensors and devices for alerts, system faults, and environmental changes. Alerts can be configured by setting up rules, navigate to Settings > Alerts.



CONNECT TO MOBILE APP

Select Connect to B&G app from the quick access menu to connect your mobile device (phone or tablet) to the unit.

Download the B&G mobile app from the App Store® or Google Play®, then scan the QR® code.



Once connected, you can use the mobile app to:

- View and download app guides on your mobile device
- Register your display unit
- Subscribe to Premium charts
- Create your own waypoints, routes and tracks
- Explore points of interest (POI)
- Monitor marine traffic and weather
- Download and apply software updates to the display unit

Note: An active internet connection is required for this feature.

© 2024 Navico Group. All Rights Reserved. Navico Group is a division of Brunswick Corporation.
®Reg. U.S. Pat. & Tm. Off, and ™ common law marks. Visit www.navico.com/intellectual-property to review the global trademark rights and accreditations for Navico Group and other entities.

FAQ

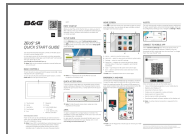
- **Q: How do I access the Quick Access Menu?**

A: Press the power button once or swipe down from the top of the screen to display the menu.

- **Q: Where can I find app-specific user guides?**



A: Download the B&G app on your mobile device or visit www.bandg.com/downloads/zeus-sr.

Documents / Resources



[BandG ZEUS SR Chart Plotter](#) [pdf] User Guide
988-13244-001, ZEUS SR Chart Plotter, ZEUS SR, Chart Plotter, Plotter

References

-  [Zeus SR | B&G Sailing USA](#)
-  [Intellectual Property](#)
- [User Manual](#)

[Manuals+](#), [Privacy Policy](#)

This website is an independent publication and is neither affiliated with nor endorsed by any of the trademark owners. The "Bluetooth®" word mark and logos are registered trademarks owned by Bluetooth SIG, Inc. The "Wi-Fi®" word mark and logos are registered trademarks owned by the Wi-Fi Alliance. Any use of these marks on this website does not imply any affiliation with or endorsement.