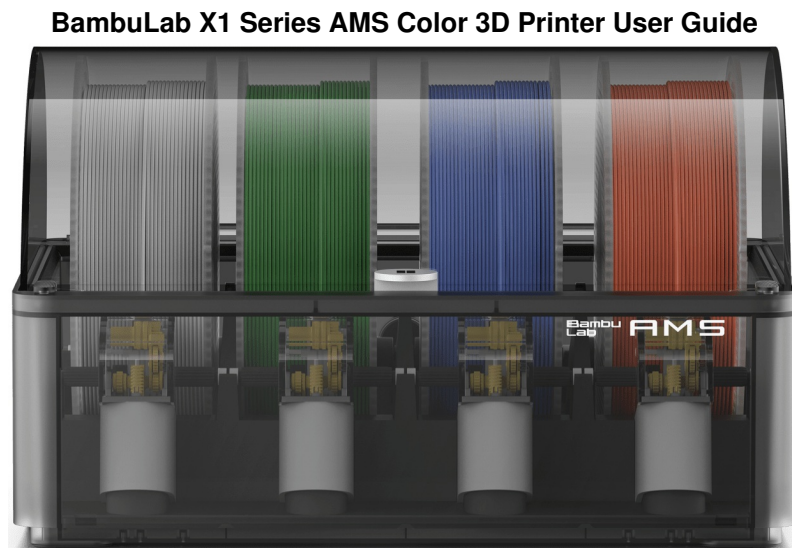


## BambuLab X1 Series AMS Color 3D Printer User Guide

[Home](#) » [BambuLab](#) » BambuLab X1 Series AMS Color 3D Printer User Guide 



**Safety Notice:** Do not connect to power until the assembly is complete.

**\*Warning:**

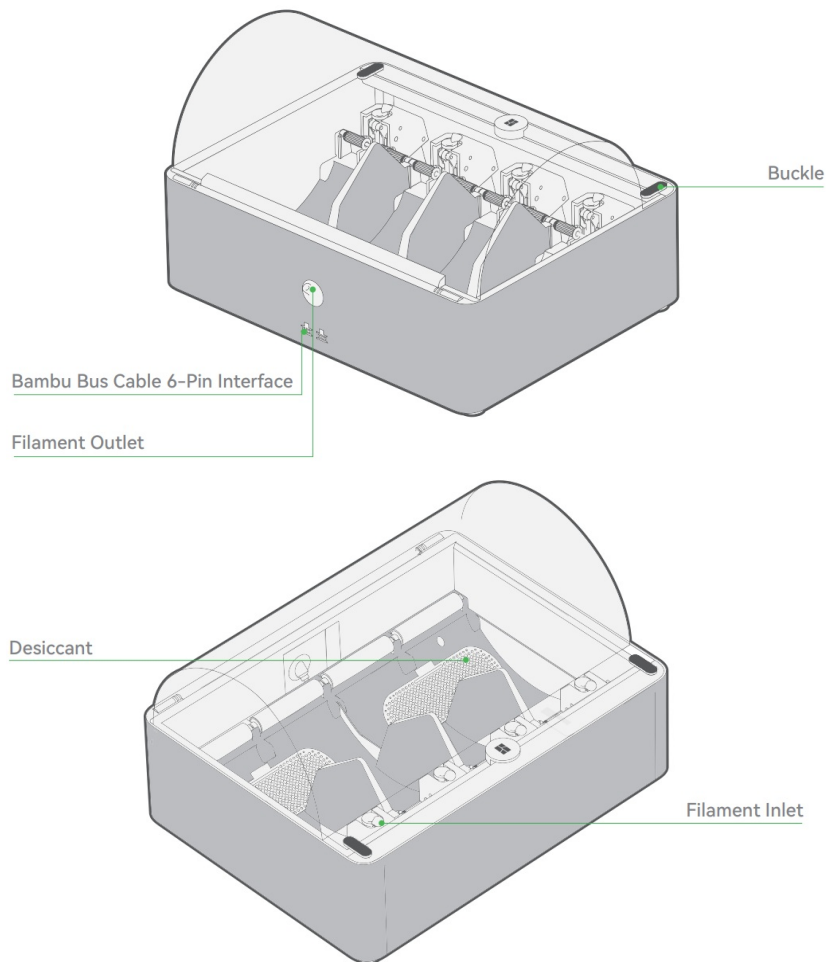
When operating the AMS, we recommend using Bambu Filament, which has been thoroughly tested to work with the AMS. Please make sure to avoid using soft materials like TPU or damp PVA, as they can get stuck in the AMS, and please avoid using cardboard spools as the spool may slip. If you run into any issues with specific filaments, please let us know so that we can provide better advice to our community.



## Contents

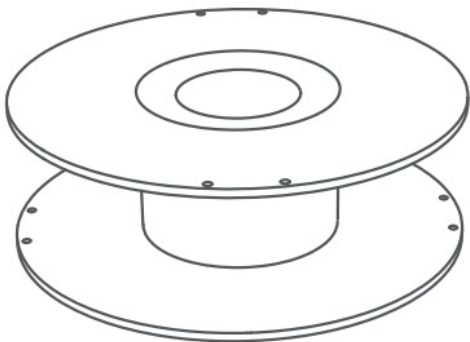
- [1 Component Introduction](#)
- [2 Accessory Specification](#)
- [3 Description](#)
- [4 Documents / Resources](#)
- [5 Related Posts](#)

## Component Introduction

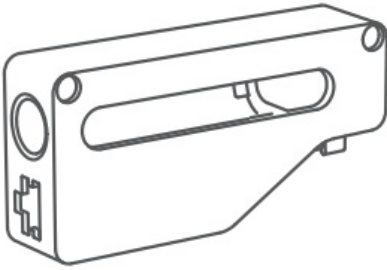


## Accessory Specification

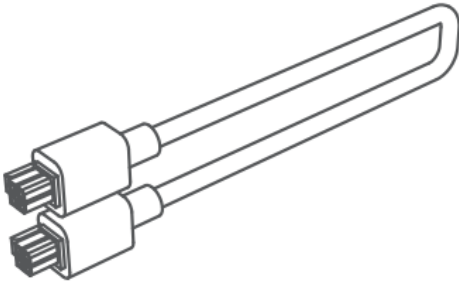
- Bambu Reusable Spool (x4)



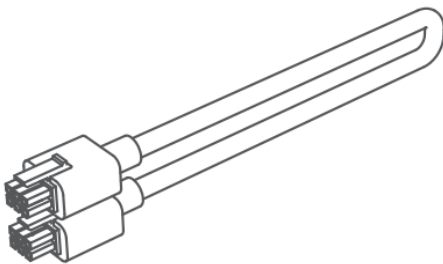
- Filament Buffer



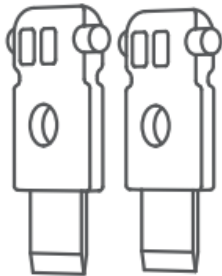
- Bambu Bus Cable-4Pin



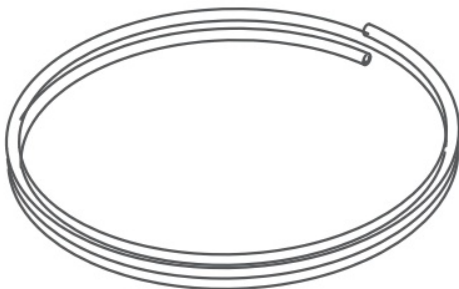
- Bambu Bus Cable-6Pin



- Spare Filament Cutter(x2)



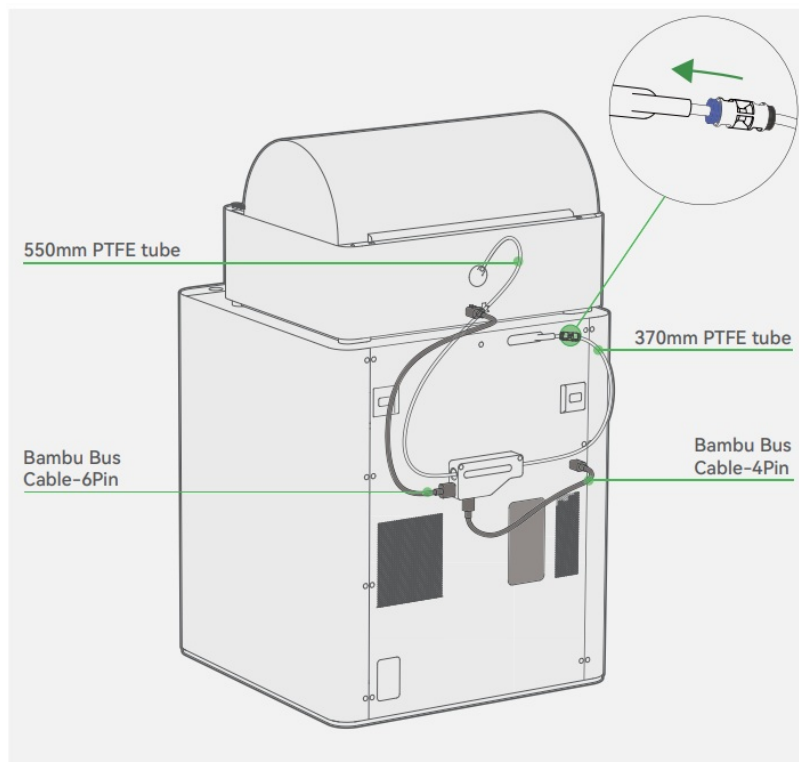
- PTFE Tube



- PTFE Tube Connector



## Description



## Documents / Resources

|   |  |
|---|--|
|  | <p><a href="#">BambuLab X1 Series AMS Color 3D Printer</a> [pdf] User Guide</p> <p>SA001, 2A6J8-SA001, 2A6J8SA001, X1 Series, AMS Color 3D Printer, X1 Series AMS Color 3D Printer</p> |
|---|--|