



[Home](#) » [Bambu Lab](#) » **Bambu Lab SA008 Automatic Material System User Guide** 

Contents [[hide](#)]

- [1 Bambu Lab SA008 Automatic Material System](#)
- [2 Specification](#)
- [3 Read before use](#)
- [4 Component introduction](#)
- [5 Included accessories](#)
- [6 Connect the AMS HT to the 2 series printers.](#)
- [7 Connect the AMS HT to X1 and P1 series printers](#)
- [8 Place the desiccant](#)
- [9 How to load filament in the AMS HT](#)
- [10 Regular maintenance](#)
- [11 Technical Support](#)
- [12 Documents / Resources](#)
 - [12.1 References](#)



Bambu Lab SA008 Automatic Material System



Please review the entire guide before using the product.

Specification

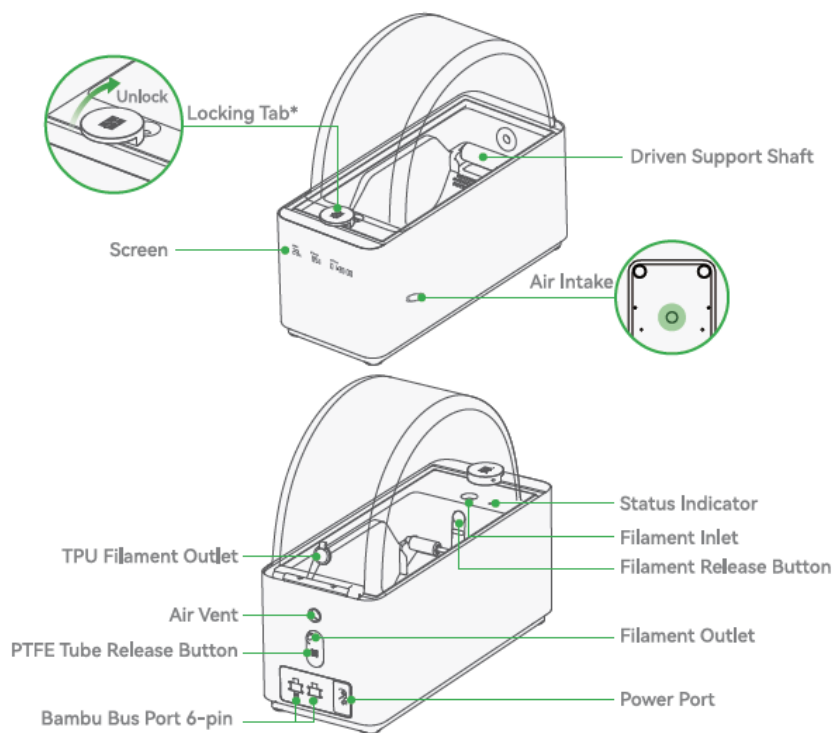
	Item	Description
Body	Dimensions	114*280*245 mm ³
	Net Weight	1.21 kg
	Housing Material	PC/PA
	Flame Retardant Grade	UL 94 V-0
	Screen	Supports displaying real-time temperature and humidity, and remaining drying duration.
Printing	Filament Supported	PLA, PETG, ABS, ASA, PET, PA, PC, PVA (dried), BVOH (dried), PP, POM, HIPS, Bambu PLA-CF/PAHT-CF/PETG-CF/Support for PLA/PETG, and TPU for AMS
	Filament Not Supported	TPE, generic TPU, PVA (damp), BVOH (damp), PET-CF/TPU 95A, and other filament that contains carbon fiber or glass fiber
	Filament Diameter	1.75 mm
	Spool Dimension	Width: 50 mm–68 mm Diameter: 197 mm–202 mm
	RFID Identification	Supported
	Filament Odometry	Supported
Drying	Maximum Temperature	85 °C
	Filament Supported	PLA, PETG, Support for PLA/PETG, ABS, ASA, PET, PA, PC, PVA, BVOH, PP, POM, HIPS, Bambu PLA-CF/ PAHT-CF/ PETG-CF, and TPU for AMS
	Active Moisture Discharge	Supported
	Rotating Drying Mode	Supported
	Sealed Storage	Supported
	Top Lid Open Detection	Supported
	Temperature, Humidity Detection and Maintenance	Supported. Real-time information can be displayed on the screen, Bambu Studio, and Bambu Handy.
	Voltage	DC: 24 V AC: 100 V–240 V~, 50 Hz/60 Hz
Average Power	150 W	

Read before use

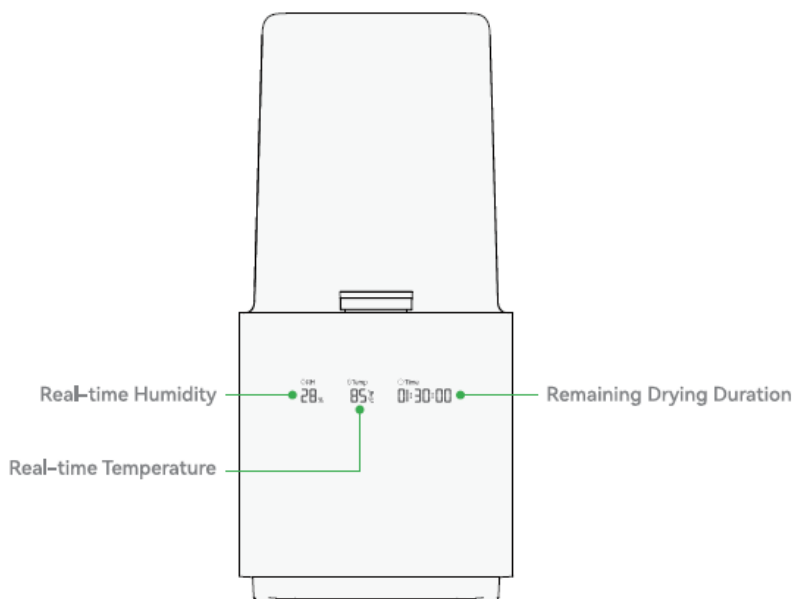
- For best results, we recommend using Bambu filaments, which have been rigorously tested for compatibility, safety, and stability with the AMS HT.
- To prevent the filament getting stuck, do not print flexible filaments such as TPU with a hardness level below 95A or damp PVA with the filament inlet of the AMS HT.
- The AMS HT supports a spool width between 50 mm to 68 mm and a diameter between 197 mm to 202 mm. We recommend using plastic spools in the AMS HT. If filaments with cardboard spools are used, it is recommended to pair them with a spool adapter to reduce roll slipping and debris.

- If you need to use the drying function of the AMS HT, you must connect the provided power cord to it.
- During the filament drying process, the AMS HT removes moisture through external air circulation via the air inlets. Please ensure the air intake and vent are not blocked to ensure optimum drying efficiency.

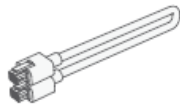
Component introduction



AMS HT can detect if the top lid is closed. If it is not closed when starting drying, the printer screen will display a message.



Included accessories



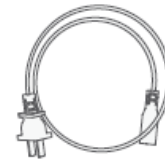
Bambu Bus
Cable 6-pin



Desiccant

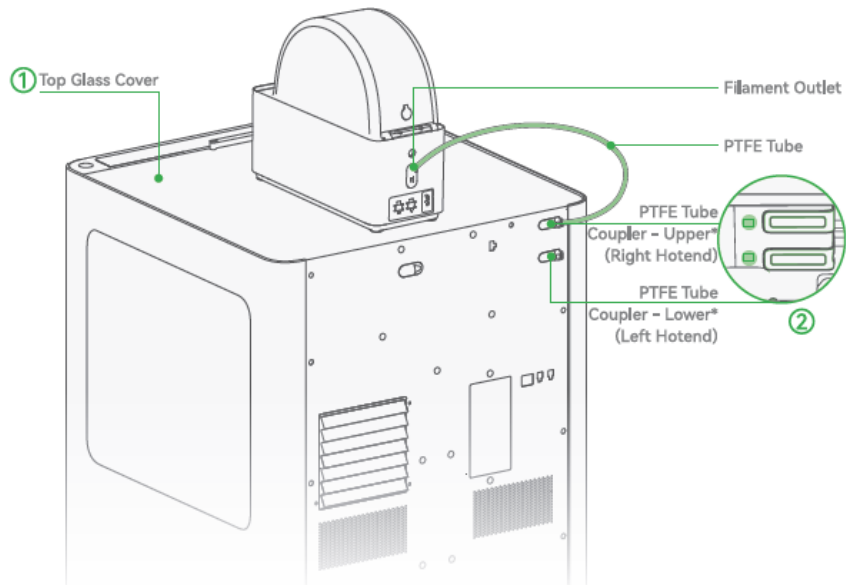


PTFE Tube

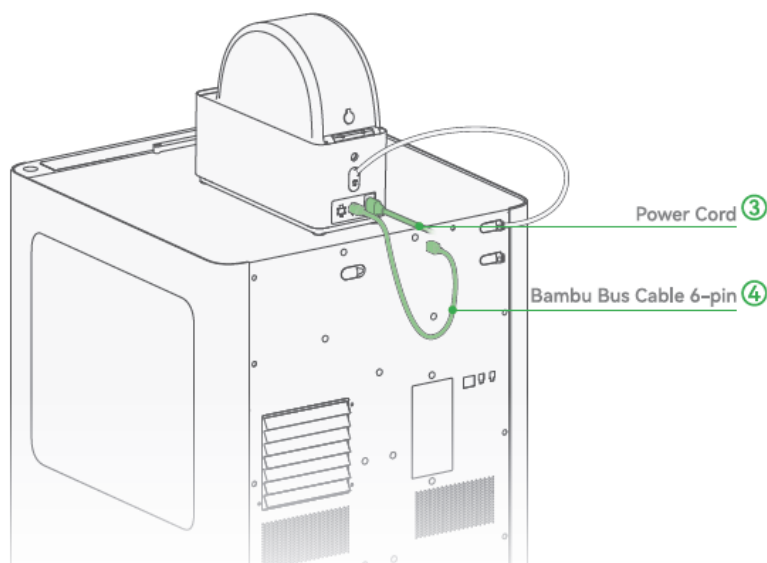


Power Cord

Connect the AMS HT to the 2 series printers.



1. Place the top glass cover and the AMS HT on top of the printer.
2. Insert one end of the PTFE tube into the AMS HT's filament outlet, and the other end into any PTFE tube coupler of the printer, and push the tube forward for about 10 cm until it stops (if you can see the PTFE tube from the window next to the buffer from the front of the printer, it is correctly inserted).



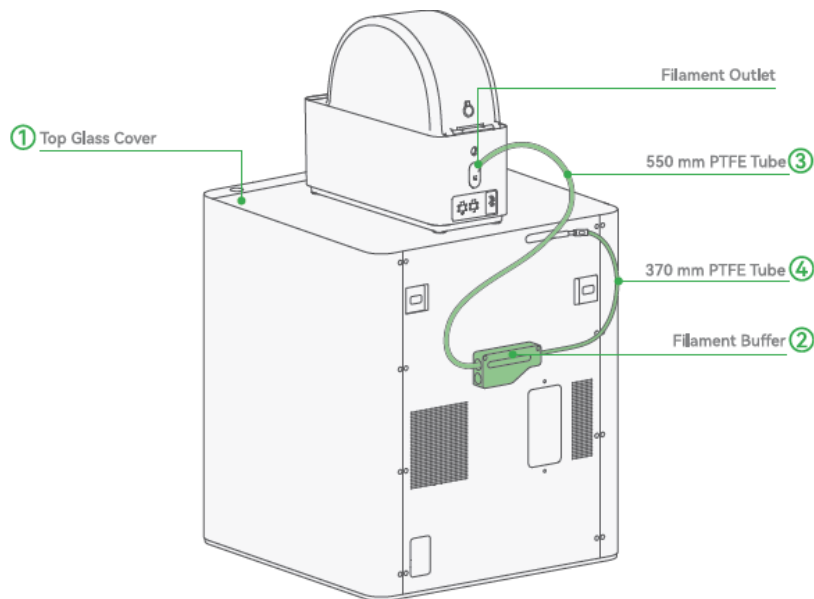
3. Connect the power cord to the power port of the AMS HT.

4. Connect the Bambu Bus Cable 6-pin to the printer and either the 6-pin port of the AMS HT.

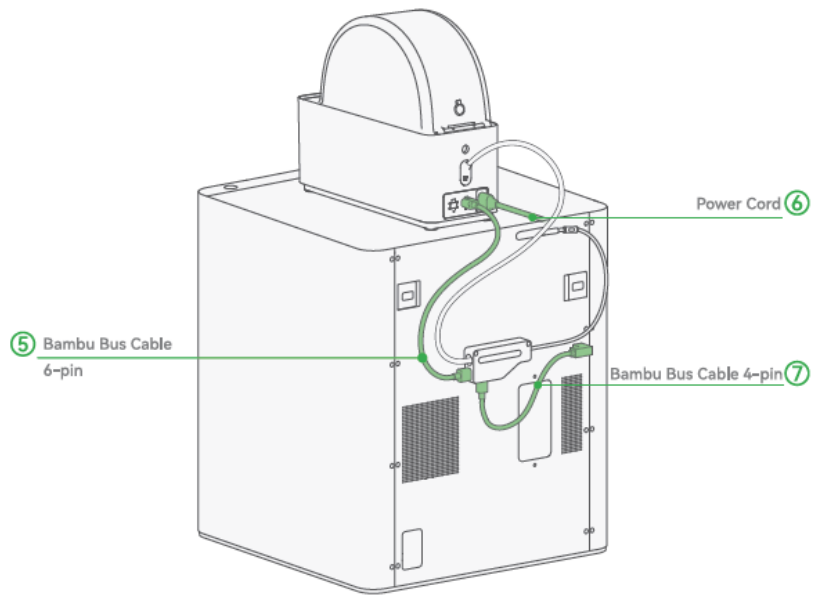
The upper and lower PTFE tube couplers correspond to different hotends. Connecting to the upper coupler allows the right hotend to print with the AMS HT, while connecting to the lower coupler allows the left hotend to print with the AMS HT.

Connect the AMS HT to X1 and P1 series printers

1. Place the top glass cover and the AMS HT on top of the printer.
2. Use 2 M3*21.5 screws to fix the filament buffer to the printer.
3. Insert one end of the 550 mm PTFE tube to the filament outlet of the AMS HT, and the other end to the left of the filament buffer.
4. Insert one end of the 370 mm PTFE tube into the PTFE tube coupler of the printer, and the other end into the right of the filament buffer.

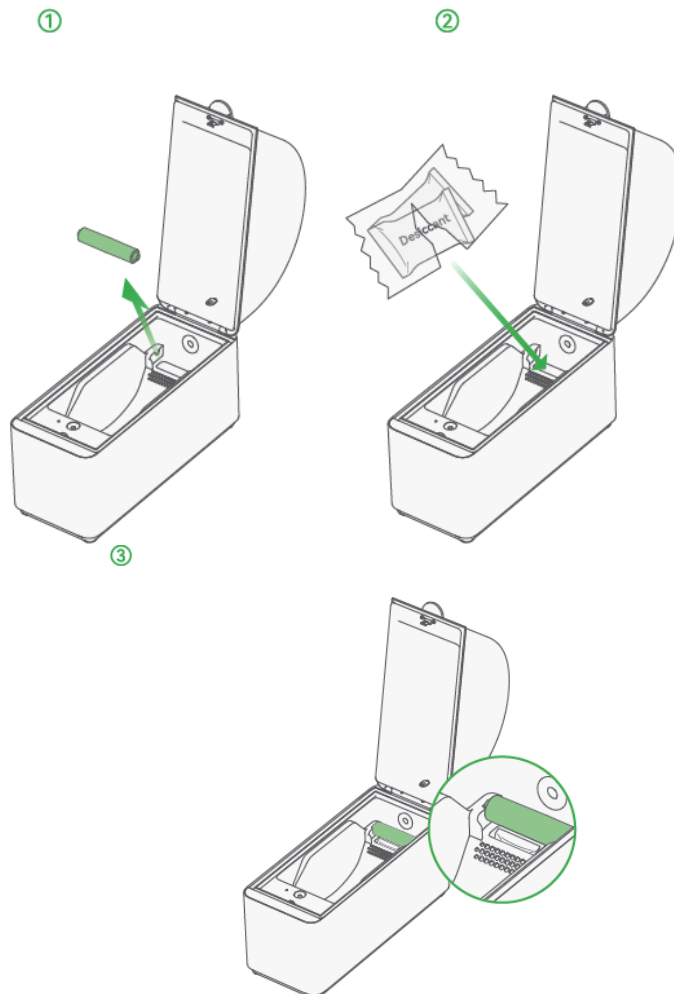


5. Connect one end of the Bambu Bus cable 6-pin to either 6-pin port of the AMS HT, and the other end to the left of the filament buffer.
6. Connect the power cord to the power port of the AMS HT.
7. Connect the L-shape end of the Bambu Bus cable 4-pin to the printer, and the other end to the bottom of the filament buffer.



Place the desiccant

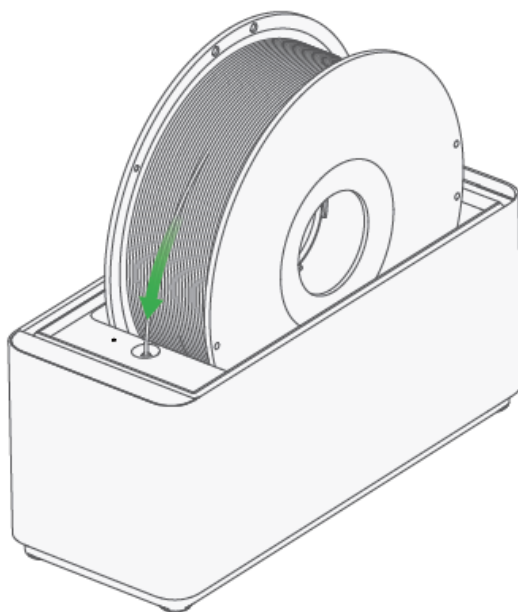
1. Remove the tape from the driven support shaft. Then, carefully slide out the shaft while ensuring the bearings on both sides remain secure.
2. Take out the desiccant from its outer plastic packaging material and place it in the space beneath the driven support shaft.



Install the driven support shaft by pressing firmly on both ends to click it into place.

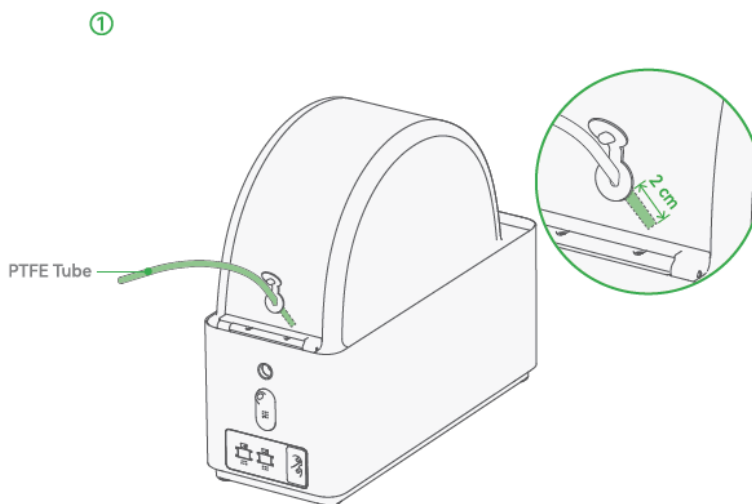
How to load filament in the AMS HT

Power on the printer and place a spool inside the AMS HT. Insert the filament into the AMS HT. The AMS HT will pre-load it after it is detected. When the status indicator next to the filament inlet is on, the AMS HT is ready to print.



If you need to use TPU filament with a hardness level below 95A, you must feed it through the TPU filament outlet on the back of the top lid. Insert a PTFE tube into the TPU filament outlet, and push the tube inside for about 2 cm.

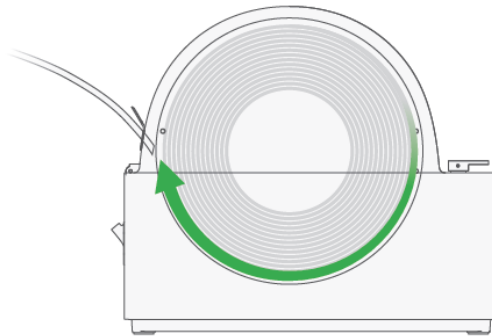
When not using TPU, keep the TPU filament outlet closed to prevent moisture exposure.



Place a spool of TPU filament inside the AMS HT, ensuring it is rotating in the direction

indicated in the picture above. Then, manually guide the filament through the PTFE tube and continue feeding it until it reaches the extruder and cannot move forward.

②



How to use the AMS HT drying function on H2 and X1 series printers


Close the top lid and tap the humidity icon



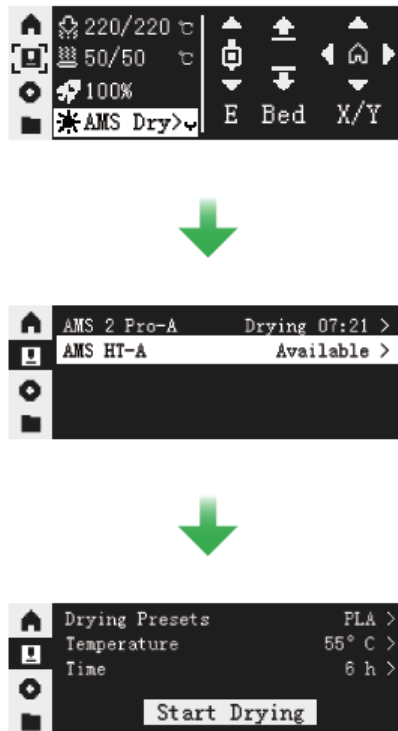
to access the drying function screen. Select the filament type, set the desired drying temperature and duration, and then tap Start to initiate the process.



How to use the AMS HT drying function on P1 series printers

1. Close the top lid. Select  – AMS Dry on the screen.
2. Select the AMS HT. The filament inside will rotate once to indicate the selection.

3. Select the filament type, set the drying temperature and duration, and then select Start Drying.



Regular maintenance

The Bambu Lab AMS HT is an intelligent system that requires regular maintenance to ensure optimal performance and longevity.

- **PTFE Tube:** Over time, the PTFE tube can experience wear as filament passes through it, leading to feeding issues or clogs. Inspect the tube periodically for signs of damage and replace it as needed to maintain smooth filament feeding.
- **Pneumatic Connector:** If the PTFE tube becomes loose or filament struggles to pass through the pneumatic connector, try reseating the connector or replacing it to restore proper filament flow.
- **Feeder Unit:** To prevent excessive resistance during filament loading or unloading, regularly clear any residual filament dust from the feeder unit.
- **Heating Unit:** Keep the heating unit clean, including the fan and heat sink, to ensure it can effectively dry filament and prevent buildup that could impair performance.
- **Active Support Shaft Assembly:** If the active support shaft assembly is misaligned or damaged, it can cause the gears to mesh improperly. If you encounter this issue, follow the provided guides from the Wiki to reinstall or replace the assembly.

- Desiccant: Desiccant packs help maintain a dry environment inside the AMS HT and prevent filament from absorbing moisture. Periodically check the desiccant and replace it if it has lost its effectiveness.



bambulab.com/support/maintenance

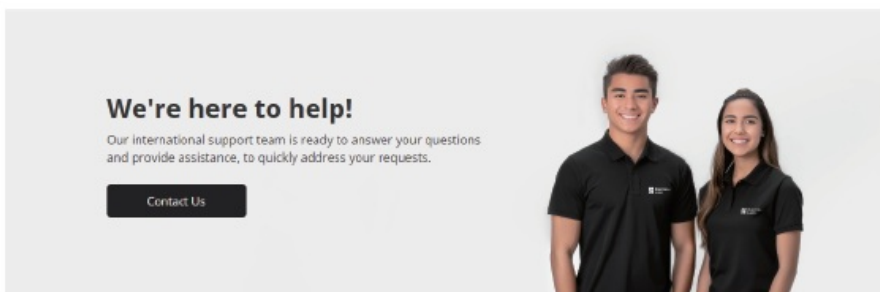
Please refer to the “Regular Maintenance Recommendations” section on our wiki for more information.

Technical Support

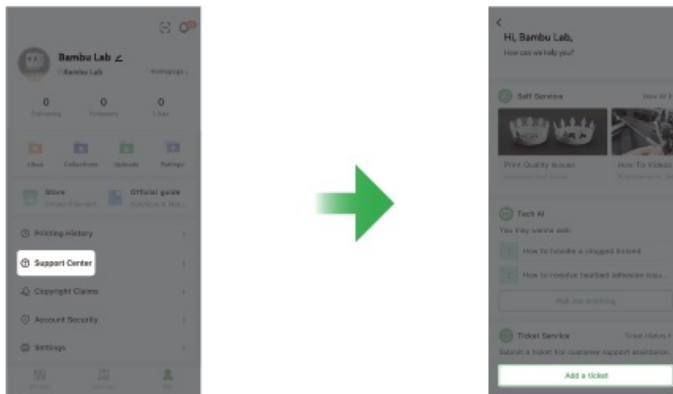
If you need technical support, please follow either of the following methods:

Method 1: Get in touch by using the Contact Us button in our Support Center.

bambulab.com/support



Method 2: Create a support ticket on Bamblu Handy from the Support Center section.



You can also visit the Bamblu Lab Wiki for more tutorials and maintenance guidance.

wiki.bambulab.com/home



www.bambulab.com

Unboxing Guide

Scan the QR code to access our online guides for detailed instructions on how to unbox, assemble, set up the printer, and start your first print.

bambulab.com/support/unboxing

Download Bambu Handy and Bambu Studio

Scan the QR code to download Bambu Handy, or visit the link below to download Bambu Studio. You can remotely control your printer and monitor your prints in real time on both your phone and computer.

bambulab.com/download

Explore more cool models

Scan the QR code to visit MakerWorld, our models community, where you can find a variety of free models, and quickly bring your ideas to life using the creativity tools in Makerlab and accessories in Maker's Supply. makerworld.com


Get help

Scan the QR code to visit our support center, contact technical support, and access more useful tutorials.

bambulab.com/support



Documents / Resources

	<p>Bambu Lab SA008 Automatic Material System [pdf] User Guide N3S_20250109_EN, BAMBU_LAB_AMS_HT_ANL-EN, SA008 Automatic Material System, SA008, Automatic Material System, Material System</p>
---	--

References

- [User Manual](#)

■ Bambu Lab

◆ Automatic Material System, Bambu Lab, BAMBU_LAB_AMS_HT_ANL-EN, Material System, N3S_20250109_EN, SA008, SA008 Automatic Material System

—Previous Post

[Bambu Lab K016 Endless Loop Express Kit Installation Guide](#)

Leave a comment

Your email address will not be published. Required fields are marked *

Comment *

Name

Email

Website

Save my name, email, and website in this browser for the next time I comment.

Post Comment

Search:

e.g. whirlpool wrf535swhz

Search

[Manuals+](#) | [Upload](#) | [Deep Search](#) | [Privacy Policy](#) | [@manuals.plus](#) | [YouTube](#)

This website is an independent publication and is neither affiliated with nor endorsed by any of the trademark owners. The "Bluetooth®" word mark and logos are registered trademarks owned by Bluetooth SIG, Inc. The "Wi-Fi®" word mark and logos are registered trademarks owned by the Wi-Fi Alliance. Any use of these marks on this website does not imply any affiliation with or endorsement.