

BALDR CL0007STH DIGITAL SHOWER CLOCK



BALDR CL0007STH Digital Shower Clock User Manual

[Home](#) » [BALDR](#) » BALDR CL0007STH Digital Shower Clock User Manual 

Contents

- [1 BALDR CL0007STH Digital Shower Clock](#)
- [2 OVERVIEW](#)
- [3 LCD SCREEN DISPLAY](#)
- [4 FEATURES](#)
- [5 DISPLAY](#)
- [6 POSITIONED METHODS](#)
- [7 PRECAUTIONS](#)
- [8 WARRANTY](#)
- [9 FREQUENTLY ASKED QUESTIONS](#)
- [10 VIDEO – PRODUCT OVERVIEW](#)
- [11 References](#)
- [12 Related Posts](#)

BALDR

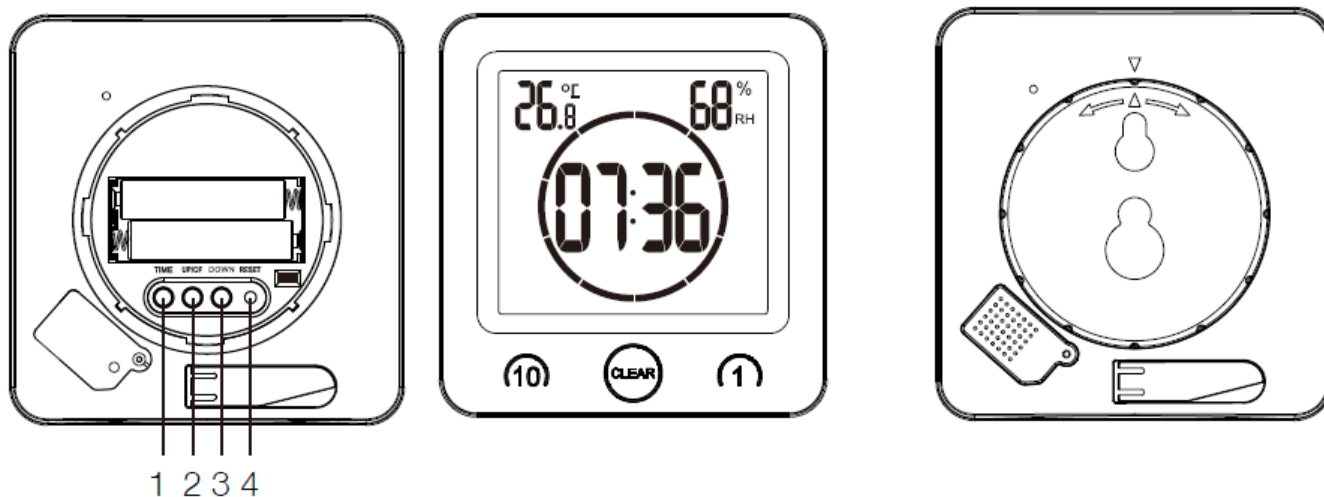
BALDR CL0007STH Digital Shower Clock



We Thank You for Your Purchase of the Baldr Shower Clock with Humidity and Temperature. It has Been Designed and Constructed Using Innovative Components and Techniques to Enable the Perfect Display of Time and Temperature by this Device. Please Read the Instructions Carefully to Become Familiar with The Properties and Functions, Before You Use the Unit.

For the start-up of this device, you require: 2xAAA Batteries

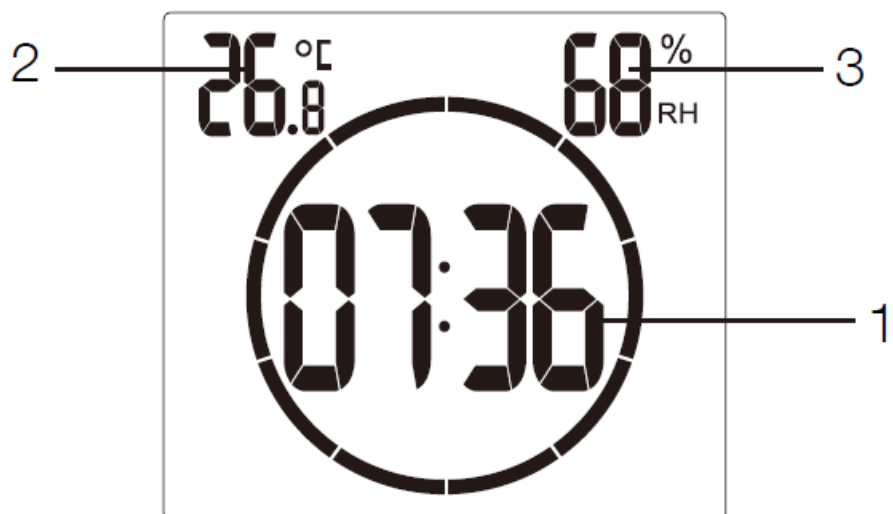
OVERVIEW



MAIN UNIT

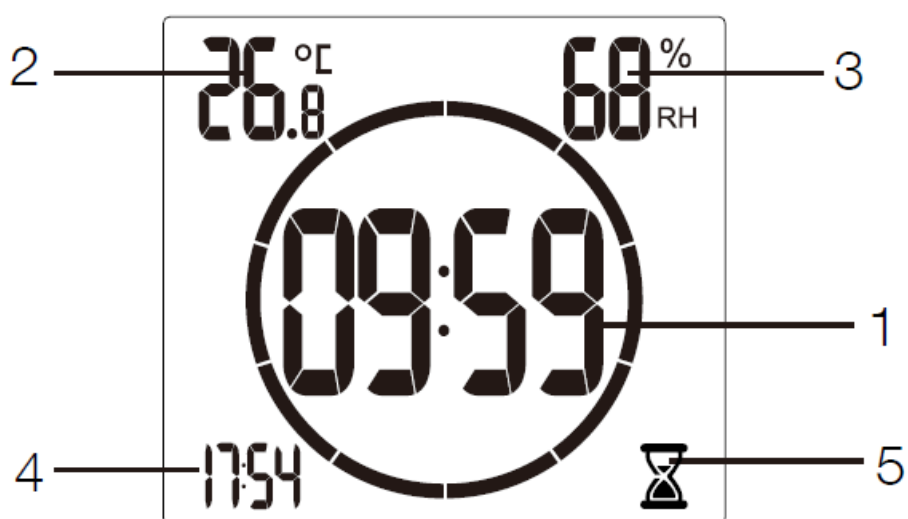
1. TIME
2. UP/CF
3. DOWN
4. RESET

LCD SCREEN DISPLAY



Time Display Mode

1. Time Display
2. Temperature
3. Humidity



Timer Display Mode

1. Timer
2. Temperature

3. Humidity
4. Time
5. Timer Indicator

FEATURES

1. Waterproof for water splashes
2. Easy set timer by touching buttons on the front
3. Time display in big digits
4. 12/24 hours selectable
5. Indoor temperature display with °C/°F selectable.
6. **Indoor temperature range:** 32°F ~ 122°F (0°C ~ +50°C)
7. Indoor humidity display
8. **Humidity range:** 15% ~ 95%

GETTING STARTED


1. Twist and lift the back cover.
2. Insert 2x AA batteries matching the polarity (and-).

TIME SET

1. Press and hold the "TIME" key to enter into time setting.
2. The figure to be set will be flashing.
3. Press the "UP/CF" key or the "DOWN" key to adjust the data; holding the "UP/CF" key or the "DOWN" key will quickly adjust the data.
4. Press the "TIME" key to confirm and go to the next setting.
5. The setting order is Minute → Hour → Exit.
6. When setting time, if no operation within 15 seconds, it will save the current data and exit the setting.
7. For 12/24H, press the "TIME" key on normal display mode to make a selection.

Note: On normal time display mode, press the "DOWN" key can turn on/off the key tone.

TIMER SET

1. On normal time display mode, touch the "10" or "1" key to set the desired timer time. For example, when the desired timer time is 5 minutes, you can just press "1" key for 5 times. Then the timer time will display inside the circle on the screen. While the current time display is shifted to the left-down corner. And when the timer working, there will be a signal  flashing on the right-down corner of the screen.
2. Press and hold the "10" or "1" key will quickly add the data. The max timer time is 99 minutes.
3. When setting the timer time, touching the "Clear" key will clear the timer time and return to normal time display mode.
4. When setting the timer, if no operation within 3 seconds, the timer will start with a 'Bi' sound. The timer time will display inside the circle on the screen.

5. When the timer working, pressing the “Clear” key will clear the timer and return to normal time display mode with a ‘Bi’ sound.
6. When the timer ends, there will be a ‘BiBi’ sound for 3 minutes alarming. Touch the “Clear” key to stop the alarm sound.

DISPLAY

TEMPERATURE DISPLAY

1. The indoor temperature will display automatically after the power is on.
2. Press the “UP/CF” key to switch°C/°F
3. **Temperature range:** 32°F~ 122°F(0°C ~ +50°C)

HUMIDITY DISPLAY

1. The indoor humidity will display automatically after the power is on.
2. **Humidity range:** 15%~95%.

POSITIONED METHODS

The bathroom clock can be positioned in 3 ways as desired.

- Pull out the table stand from the back of the clock, and place on the table or desk as desired.
- Hang on the wall by hanging a hole
- Attach to the smooth place with the strong suction cup.

RESET

- Press the “RESET” key to return to the default settings.

PRECAUTIONS

- Do not clean any part of the product with benzene, thinner or other solvent chemicals. When necessary, clean it with a soft cloth.
- Never immerse the product in water. This will damage the product.
- Do not subject the product to extreme force, shock, or fluctuations in temperature or humidity.
- Do not tamper with the internal components.
- Do not mix new and old batteries or batteries of different types.
- Do not mix alkaline, standard or rechargeable batteries with this product. Remove the batteries if storing this product for a long period of time. Do not dispose of this product as unsorted municipal waste. Collection of such waste separately for special treatment is necessary.

WARRANTY

- BALDR provides a 1-year limited warranty on this product against manufacturing defects in materials and

workmanship.

- Warranty service can only be performed by our authorized service center. The original dated bill of sale must be presented upon request as proof of purchase to us, or our authorized service center.
- The warranty covers all defects in material and workmanship with the following specified exceptions:(1) damage caused by accident, unreasonable use or neglect (including the lack of reasonable and necessary maintenance); (2) damage occurring during shipment (claims must be presented to the carrier); (3) damage to, or deterioration of any accessory or decorative surface;(4) damage resulting from failure to follow instructions contained in your owner's manual.
- This warranty covers only actual defects within the product itself, and does not cover the cost of installation or removal from a fixed installation, normal set-up or adjustments, claims based on misrepresentation by the seller or performance variations resulting from installation-related circumstances.
- To receive warranty service, the purchaser must contact with BALDR nominated service center for the problem determination and service procedure.
- Thank you for your choice of BALDR products!

www.baldr.com

service@baldr.com

FREQUENTLY ASKED QUESTIONS

What type of display does the BALDR CL0007STH Digital Shower Clock have?

The BALDR CL0007STH Digital Shower Clock features a digital display for easy reading of time and humidity levels.

What are the dimensions of the BALDR CL0007STH Digital Shower Clock?

The dimensions of the BALDR CL0007STH Digital Shower Clock are 4.5 inches in width and 4.5 inches in height.

How is the BALDR CL0007STH Digital Shower Clock powered?

The BALDR CL0007STH Digital Shower Clock is powered by 2 AA batteries.

How much does the BALDR CL0007STH Digital Shower Clock weigh?

The BALDR CL0007STH Digital Shower Clock weighs 6.4 ounces.

What is the model number of the BALDR CL0007STH Digital Shower Clock?

The model number of the BALDR CL0007STH Digital Shower Clock is CL0007STH.

What is the price of the BALDR CL0007STH Digital Shower Clock?

The price of the BALDR CL0007STH Digital Shower Clock is \$21.95.

Why is my BALDR CL0007STH Digital Shower Clock not turning on?

Ensure that the 2 AA batteries are properly installed and have sufficient charge. If the BALDR CL0007STH Digital Shower Clock is still not turning on, replace the batteries with new ones.

What should I do if the humidity reading on my BALDR CL0007STH Digital Shower Clock is inaccurate?

Place the BALDR CL0007STH Digital Shower Clock away from direct water contact and ensure it is in a stable environment. If the reading remains inaccurate, replace the batteries and make sure the clock is properly sealed.

Why does my BALDR CL0007STH Digital Shower Clock reset itself?

Frequent resets can indicate weak or improperly installed batteries. Replace the 2 AA batteries and ensure they are correctly installed in the BALDR CL0007STH Digital Shower Clock.

How can I stop my BALDR CL0007STH Digital Shower Clock from fogging up?

Ensure the BALDR CL0007STH Digital Shower Clock is placed in a well-ventilated area and not directly under the shower spray. If fogging persists, consider using a protective cover designed for humid environments.

What should I do if the buttons on my BALDR CL0007STH Digital Shower Clock are unresponsive?

If the buttons are unresponsive, check for any debris or moisture that might be obstructing them. Remove the batteries, clean the clock gently, and reinstall the batteries to see if this resolves the issue.

Why is my BALDR CL0007STH Digital Shower Clock not displaying the humidity level?

Ensure that the BALDR CL0007STH Digital Shower Clock is placed in a location where it can accurately measure humidity. If the display is blank or incorrect, replace the batteries and check the clock's placement.

How can I fix the dim display on my BALDR CL0007STH Digital Shower Clock?

Dim display issues can often be resolved by replacing the batteries. Ensure the 2 AA batteries in the BALDR CL0007STH Digital Shower Clock are fresh and properly installed.

How can I fix the suction cup mount on my BALDR CL0007STH Digital Shower Clock if it is not sticking?

Clean both the suction cup and the surface where you intend to mount the BALDR CL0007STH Digital Shower Clock. Make sure both surfaces are dry and free from soap residue. Press firmly to ensure a secure

attachment.

What should I do if the BALDR CL0007STH Digital Shower Clock is not keeping time accurately?

Inaccurate timekeeping can be due to weak batteries. Replace the 2 AA batteries with new ones and ensure the clock is not exposed to extreme temperatures or moisture.

VIDEO – PRODUCT OVERVIEW



[Download the PDF link: **BALDR CL0007STH Digital Shower Clock User Manual**](#)
[Shower-Clock-User-Manual.mp4](#)

References

- [User Manual](#)

[Manuals+ Privacy Policy](#)

This website is an independent publication and is neither affiliated with nor endorsed by any of the trademark owners. The "Bluetooth®" word mark and logos are registered trademarks owned by Bluetooth SIG, Inc. The "Wi-Fi®" word mark and logos are registered trademarks owned by the Wi-Fi Alliance. Any use of these marks on this website does not imply any affiliation with or endorsement.