

**BAILUN YACHEN
B04 Smart Lock**



BAILUN YACHEN B04 Smart Lock User Guide

[Home](#) » [BAILUN YACHEN](#) » BAILUN YACHEN B04 Smart Lock User Guide 

Contents

- [1 BAILUN YACHEN B04 Smart Lock](#)
- [2 Specifications](#)
- [3 Installation](#)
- [4 FAQs](#)
- [5 Documents / Resources](#)
 - [5.1 References](#)
- [6 Related Posts](#)

BAILUN YACHEN

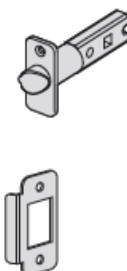
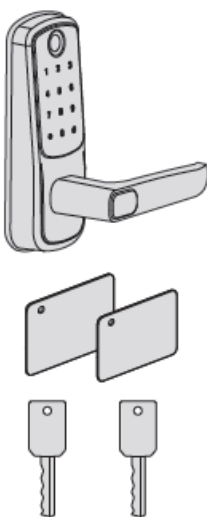
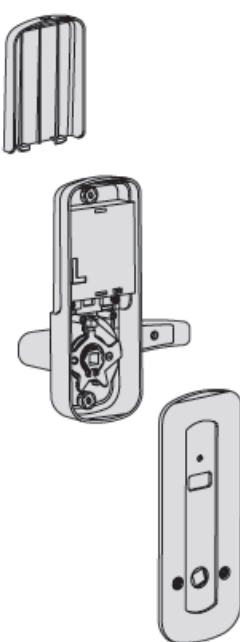
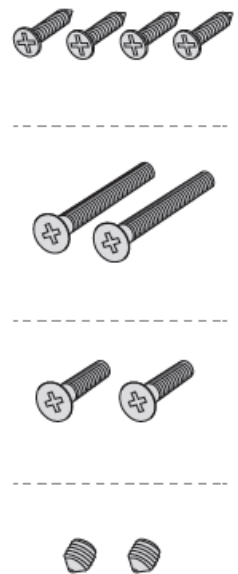


BAILUN YACHEN B04 Smart Lock



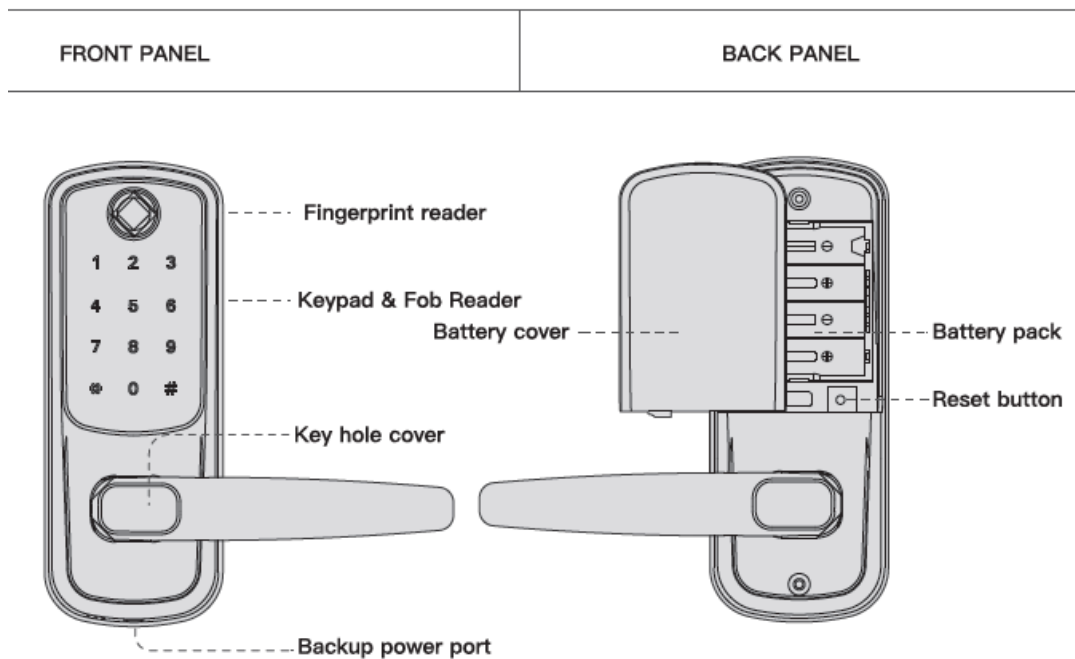
Specifications

- **Device Type:** Smart Lock
- **Compatibility:** Android and iOS devices
- **Connectivity:** Bluetooth
- **App:** Smart Lock App (available on Google Play and App Store)

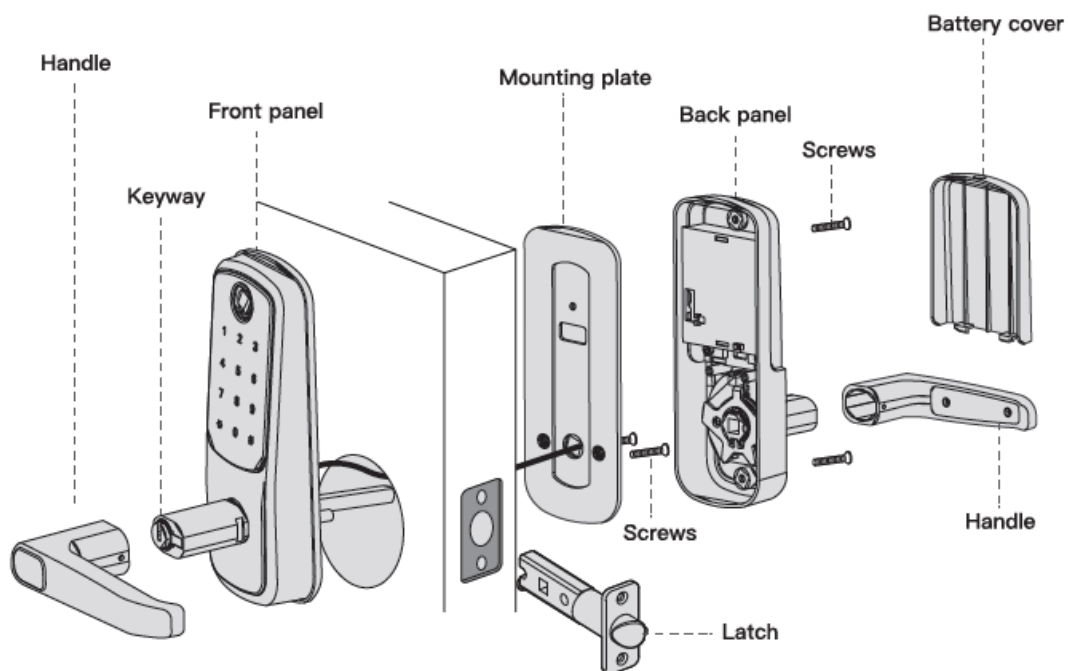
WHAT'S INCLUDED

Latch and strike	Exterior Assembly	Interior Assembly	Screws
			
  <p>Phillips headscrew driver Note: No drill needed</p>			

PRODUCT OVERVIEW

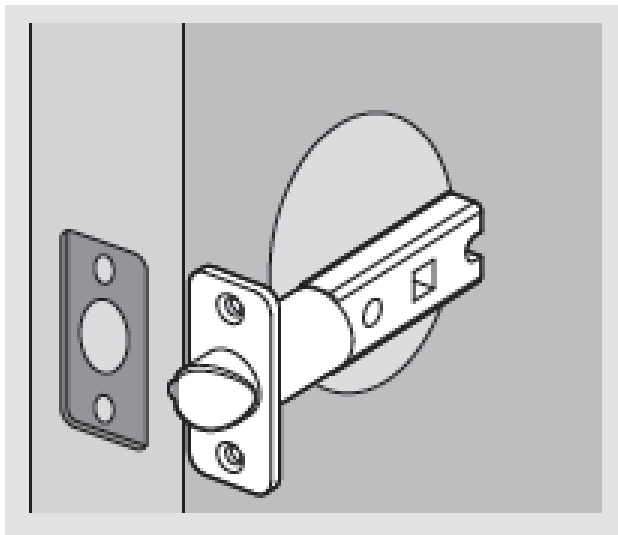


EXPLOSIVE VIEW

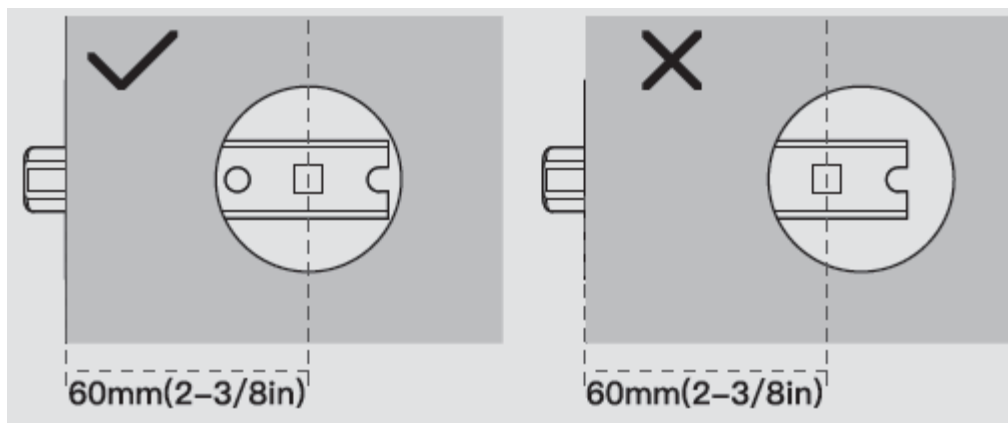


Adjust the backset of the latch (if needed)

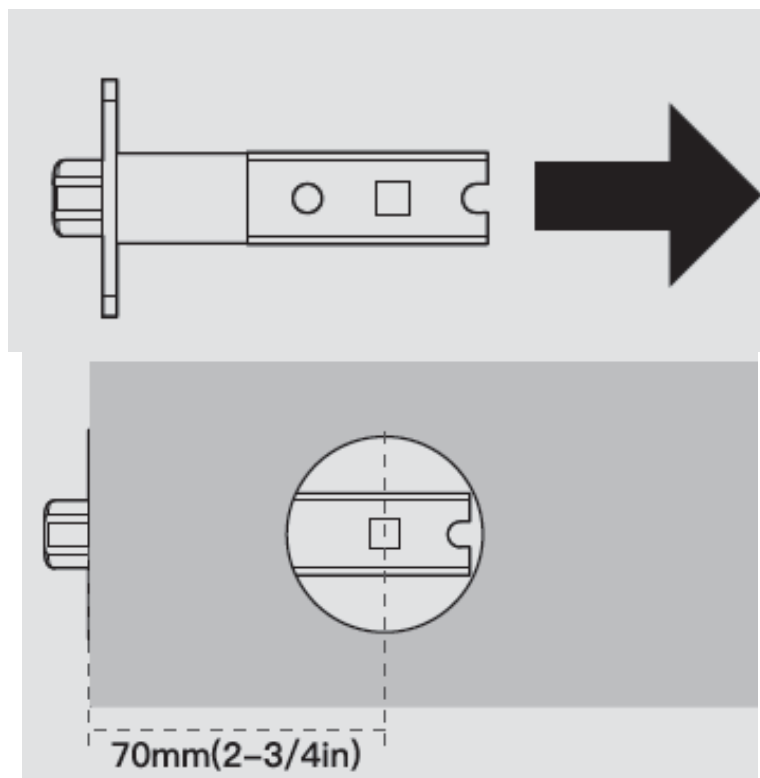
- Hold the latch in front of the door hole, with the latch face flush against the door edge.
-



If the latch holes are centered in the door hole, no adjustment is required. Proceed to step 2. If the latch holes are NOT centered, adjust latch. See “Latch Adjustment.”

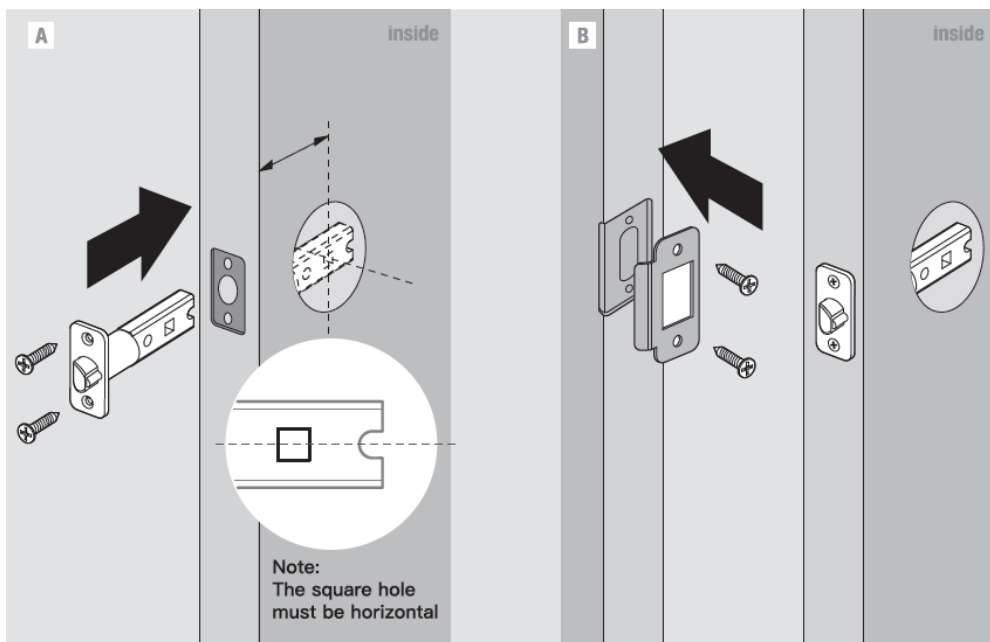


- Latch adjustment (only if needed)

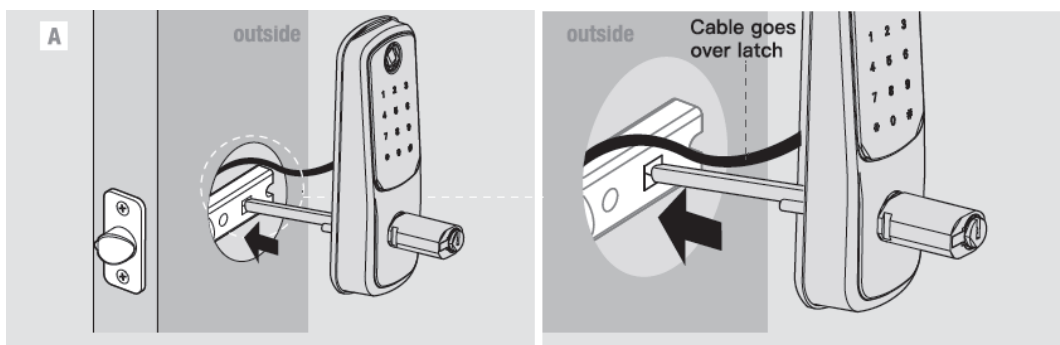


Installation

Install latch

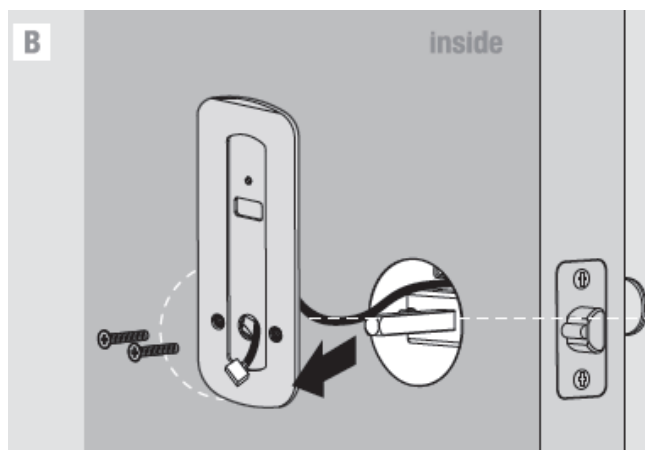


- Install front panel and interior mounting plate

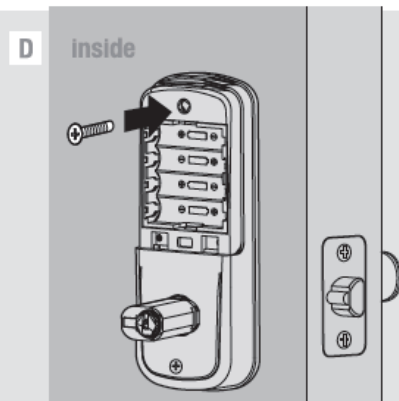
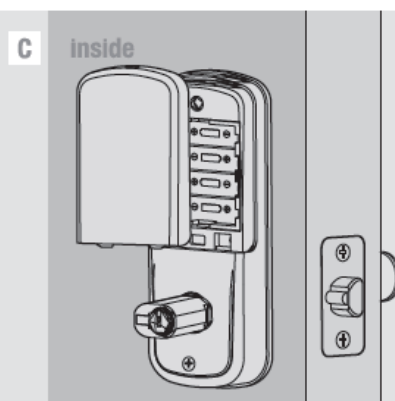
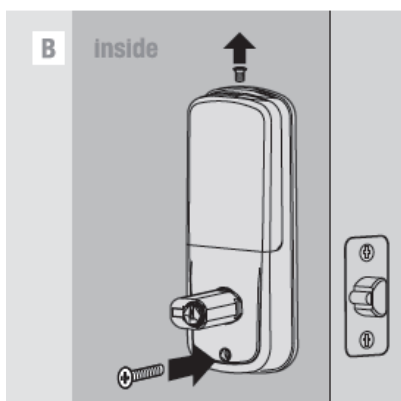
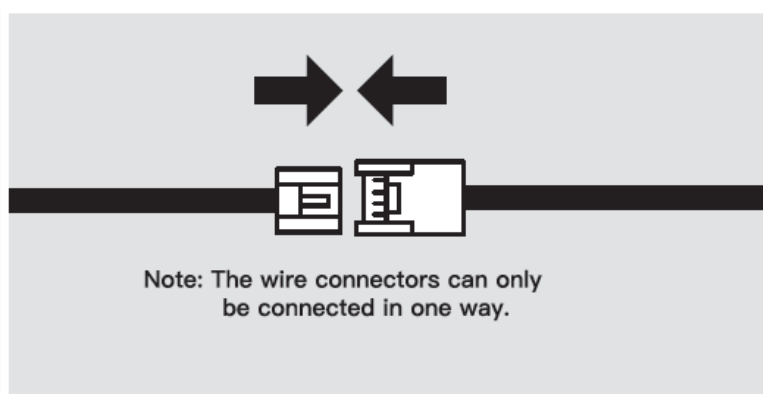
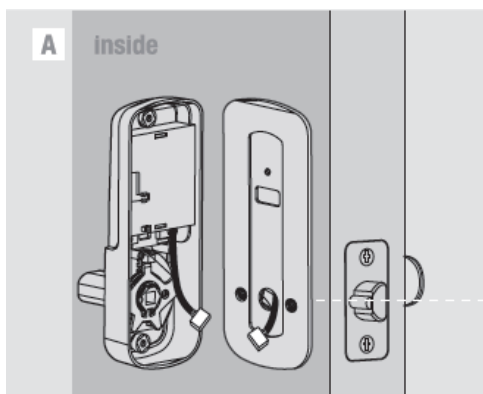


Note:

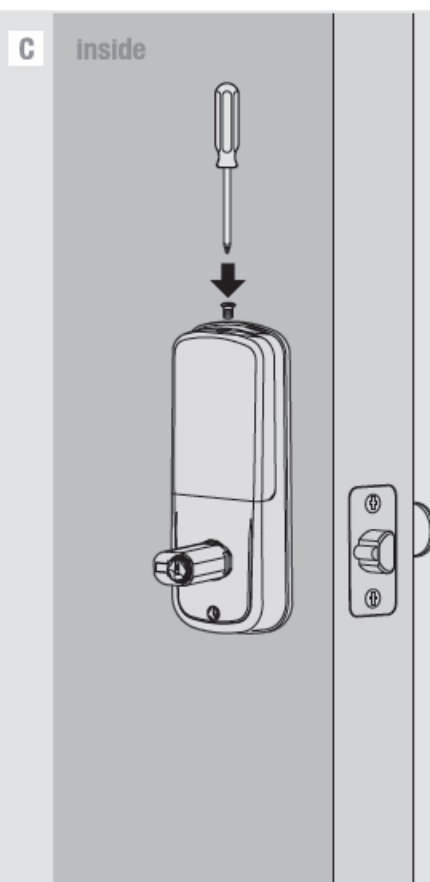
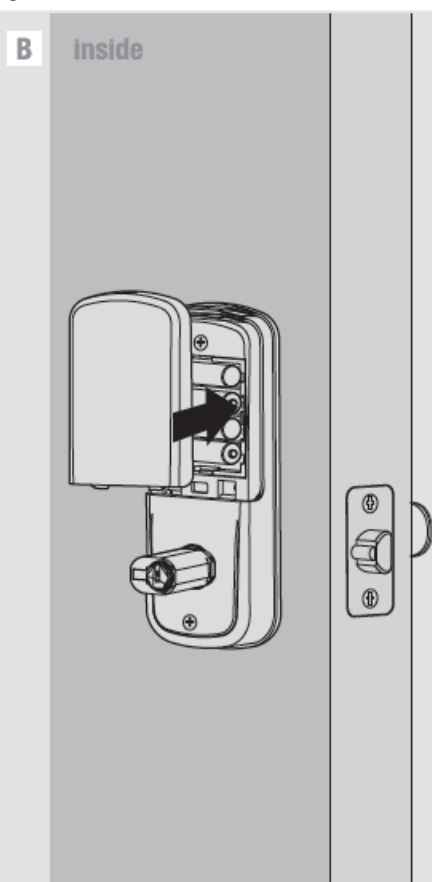
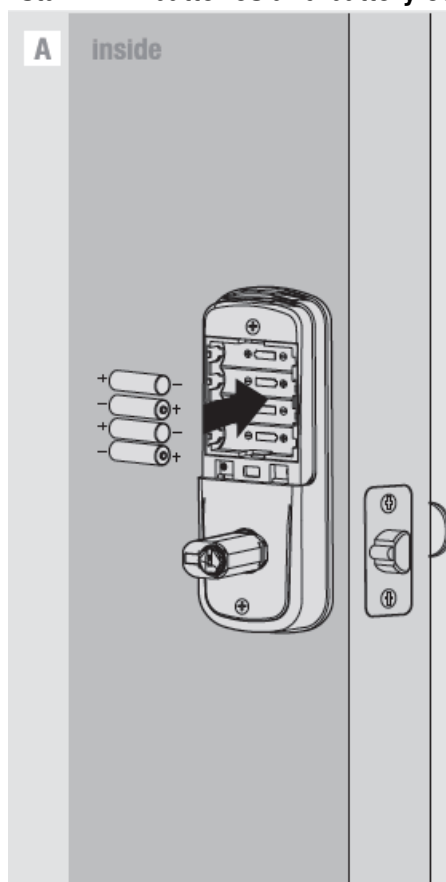
- Choose the screws that will fit the thickness of your door. Check labels on the screw bags.



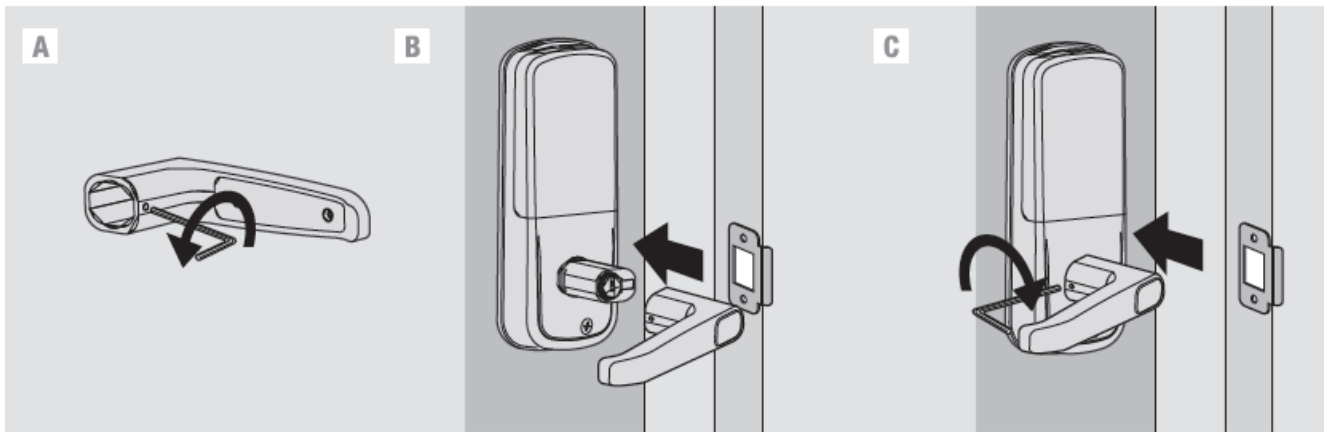
- Connect the wire connector and install the back panel



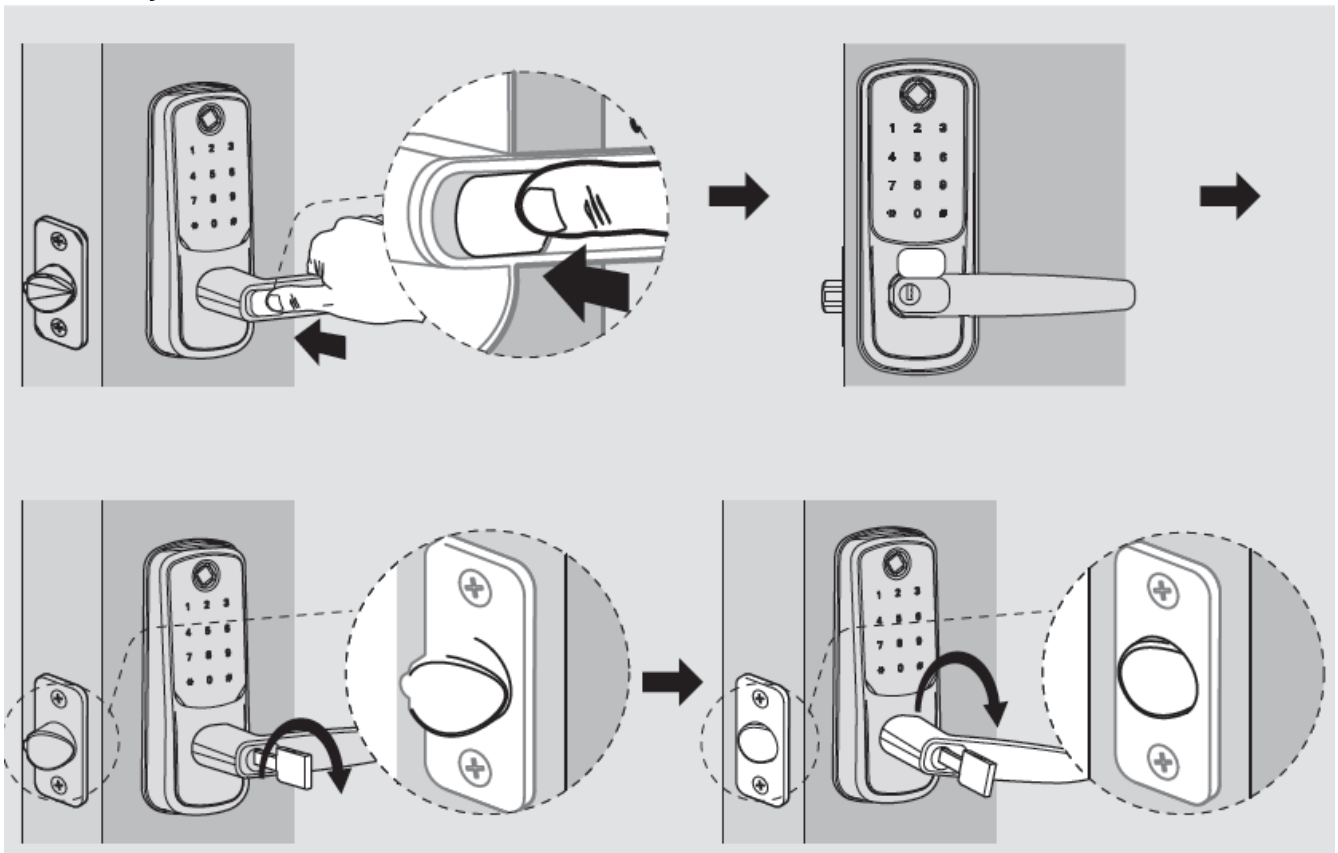
Install 4 AA batteries and battery cover



Install the door handles



Insert the key and test the installation

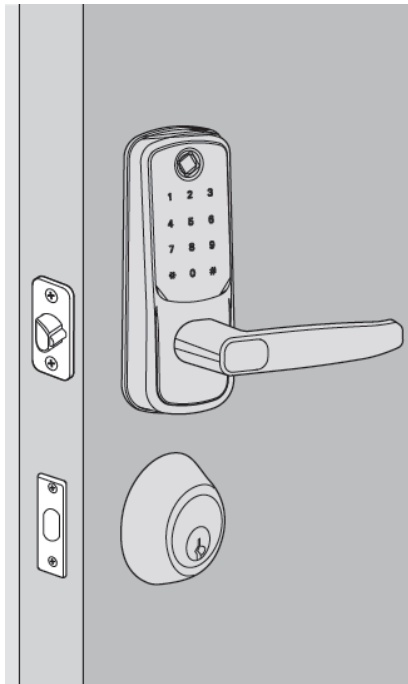


Install our lock on top (only if needed)

Install our lock on top

- If you have a deadbolt lock on top, please move the deadbolt lock to the bottom and install our lock on top to

avoid installation issues.



HOW TO REGISTER

- Download the Smart Lock app from Google Play or App Store Search " TT Lock."

STEP 1

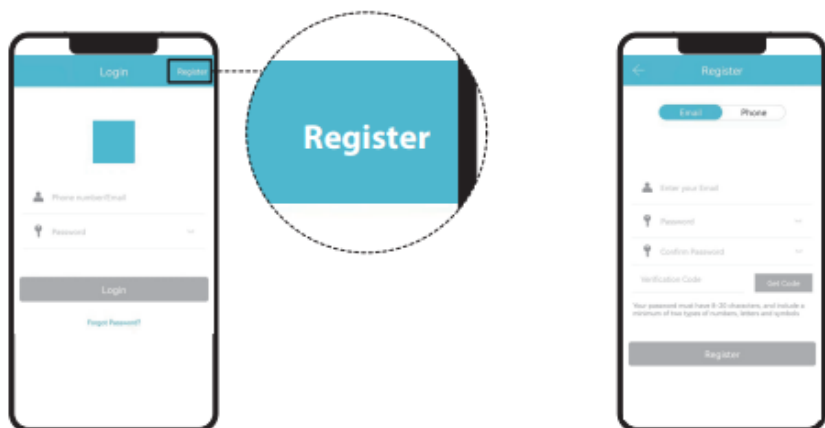
- Tap on register to get started!

STEP 2

- Fill out this and then tap "Get Code". You will be sent a verification code to verify your account! Once, you receive it, tap on "Register"

Note:

- The Smart Lock app is needed to use this lock. If this lock was professionally installed (or installed by someone other than the homeowner), make sure this step is performed by the homeowner.



PAIRING YOUR LOCK

STEP 1

- Tap on the three horizontal lines.

STEP 2

- Tap on “+ Add Lock”

STEP 3

- Tap on “Next”

STEP 4

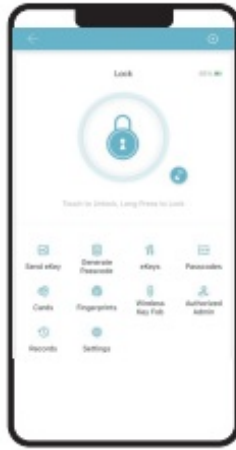
- Tap on the blue plus sign.

Note:

- You may need to tap on the lock keypad.



LOCK PAGE OVERVIEW



Unlock/Lock

- Unlock/Lock using the phone's bluetooth

Generate Passcode Page

- Generate 6 different types of passcodes

eKey Page

- View and modify current eKeys

Remote Unlock

- Unlock remotely if Sifely Gateway is connected nearby

Records Page

- View entry times, attempts, and methods

Settings Page

- View and modify settings

Send eKey

- Set up and send eKeys

Cards/Fobs Page

- Set up your fobs here

Fingerprints Page

- Set up fingerprints



Passcode Page

- View and modify the passcode



Authorized Admin Page

- Create and edit admins



Wireless Key Fob Page

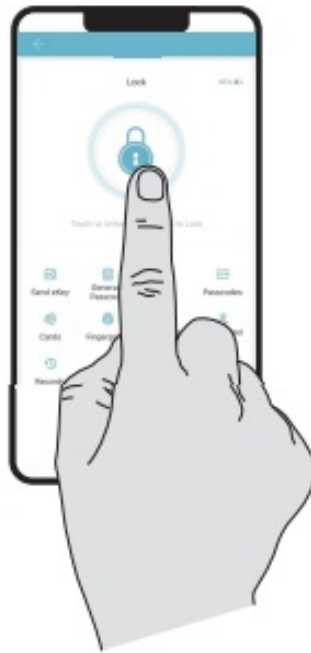
- Wireless Key Fob Page




Unlock/Lock Status

- Check the status of the lock

APP UNLOCK/LOCK



-  To unlock the lock, tap this icon once. To lock the lock, press and hold on this icon.

Note:

- This will only work while you are within bluetooth range of the lock. Refer to Gateway Guide page for remote unlock /lock information.

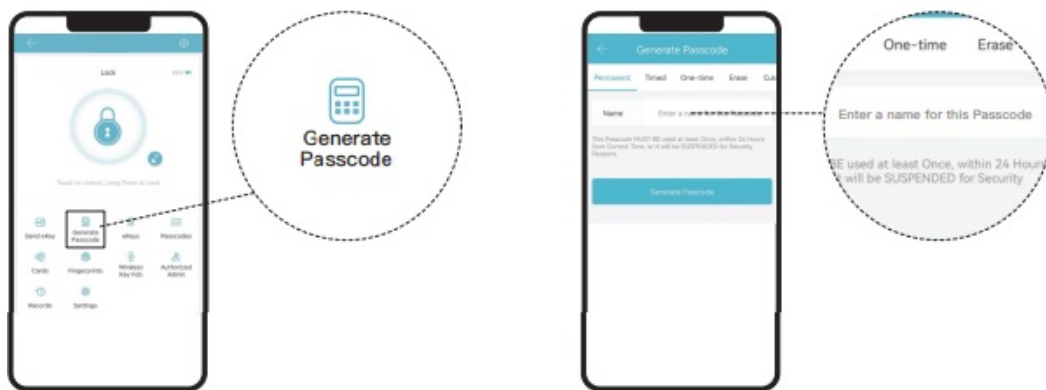
PASSCODES

STEP 1

- To access the passcode menu, tap on “Generate Passcode”. This will take you to the passcode page.

STEP 2

- Enter a name for this Passcode.



Here is a breakdown of the 6 different code types for different durations.

- **Permanent** Lasts permanently
- **Timed** Lasts between selected hours
- **One-time** Lasts for one use
- **Erase** Erases all codes on the lock
- **Custom** Choose your digits such as 4321 (permanent or timed)
- **Recurring** Lasts during scheduled hours weekly

Pay attention to this text when generating a code. You may experience issues if these instructions are not followed.

Note:

- To generate custom codes, you will need to be within bluetooth range of the lock unless a Gateway is connected.

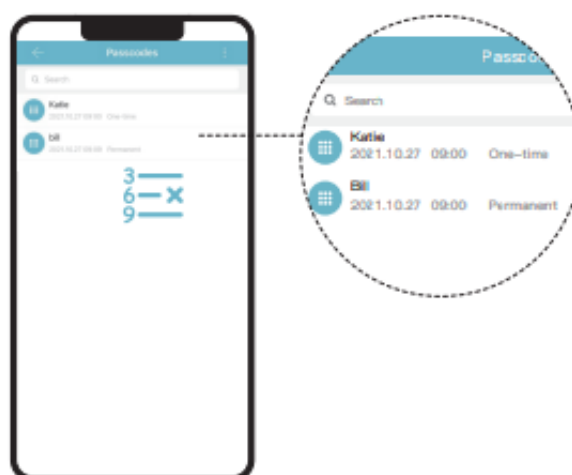
Best Practice:

- When inputting the passcode, use # + Code + #.



Note:

- The above can only be done within bluetooth range unless a Gateway is connected.



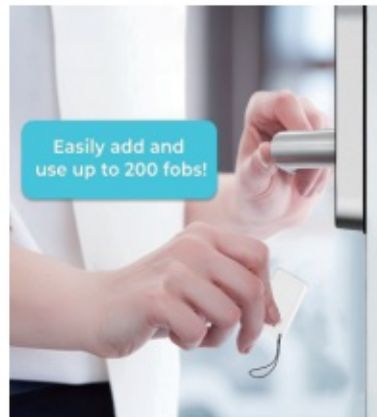
IC CARD / FOBS

- To add a fob to your lock. Follow these steps.

1. Tap on "Cards".

2. Tap on “Add Card”

- Choose the validity period of the lock.
- Once the lock says “Please swipe your card”, place the fob against 5 on the keypad.
- If you hear “input successful”, the fob can be used to unlock your lock.



FINGERPRINTS

- To add a fingerprint follow these instructions:

Step1

- Tap on Fingerprints.

Step2

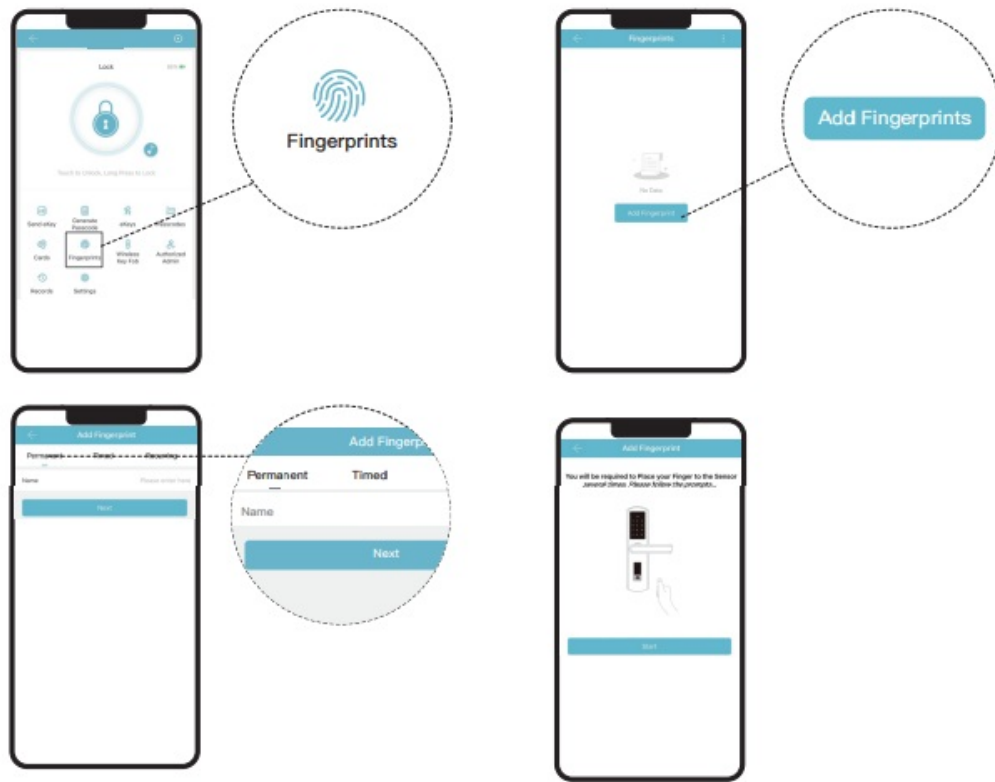
- Tap on “Add Fingerprints”

Step3

- Select the Fingerprint type depending on when you would like it to be valid.

Step4

- Follow the instructions on the app. You will be asked to place your finger on the sensor 4 times.



Experiencing issues with fingerprint recognition?

- Ensure the sensor surface is clean.
- Try a different finger.
- Ensure your finger is moist enough.
- Take out batteries for a minute and place them back in.

eKEYS

Best Practices:

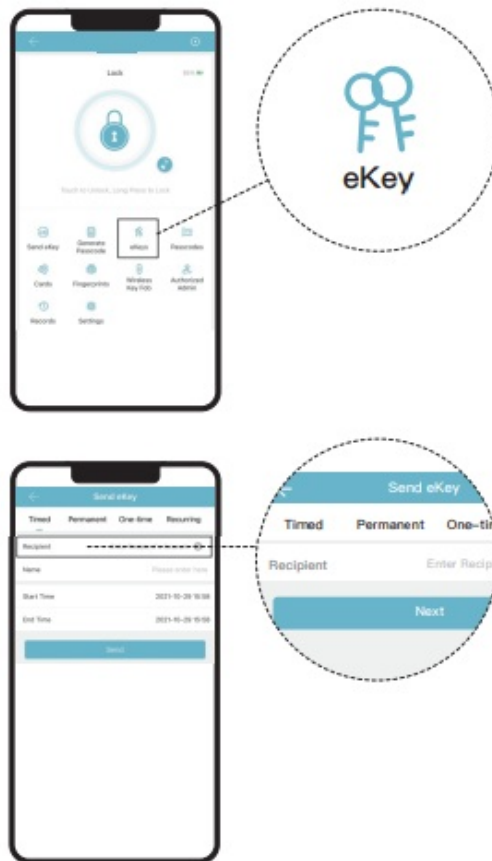
- It is strongly recommended that the recipient first register for an account using the Smart Lock app.

Step1

- eKeys works by sharing app access of your lock with another Smart Lock account. eKey recipients will be able to use their phone to unlock/lock the lock.

Step2

- Enter the recipient's username. It will be the phone number or email address used during registration. eKeys do not require wifi or bluetooth to be sent or revoked.



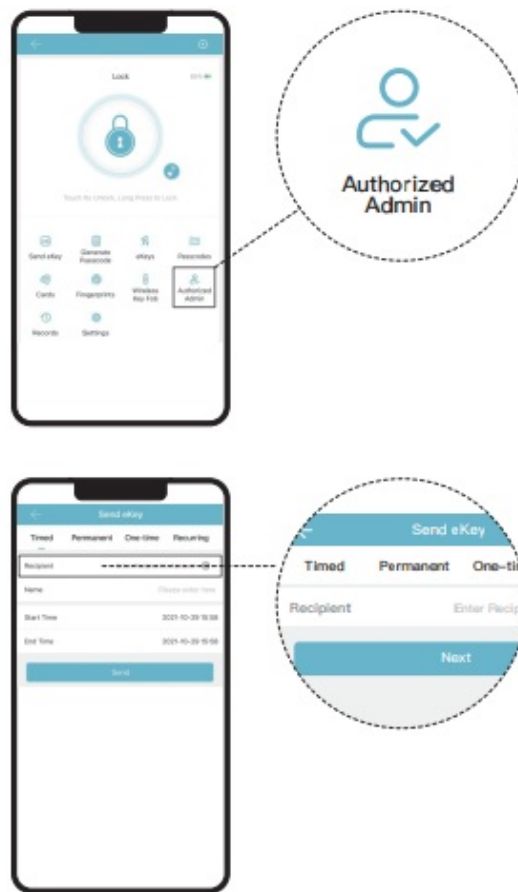
AUTHORIZED ADMIN

Step1

- Authorized Admins are similar to eKeys; however, an authorized admin can do the following:
 1. Unlock/lock via the app.
 2. Generate, Edit, Delete passcodes, IC cards, & fingerprints.
 3. Adjust settings like passage mode, and auto-lock timer, & turn on/off the lock sound.

Step2

- Enter the recipient's username. It will be the phone number or email address used during registration.



PASSAGE MODE & AUTO-LOCK

Step1

- Auto-lock will automatically lock the lock when it has been opened after 5 seconds by default. This can be adjusted with Passage Mode and Auto-lock timer. Outlined below is how to adjust these settings related to auto-lock.

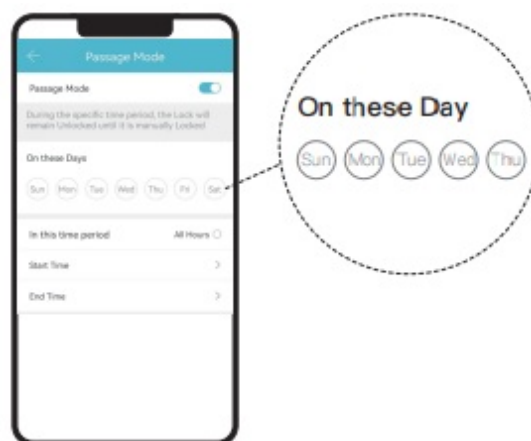
Step2

- Select Passage Mode



Step3

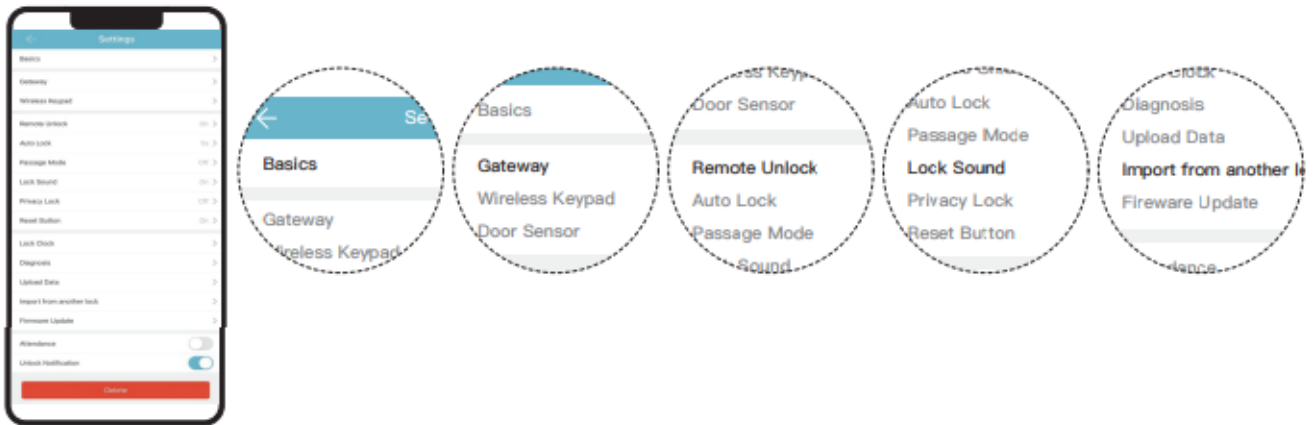
- Passage Mode disables auto-lock during a set schedule.



LOCK SETTINGS

- Here are some settings you should familiarize yourself with.
- Under Basics you can view and change information such as Lock Name.
- Gateway shows signal strength if Gateway is connected.
- With Remote Unlock on and a Gateway connected, you can remotely unlock/lock your lock.

- Lock Sound adjusts the lock's sound level.
- Import from another lock allows for the transfer of passcodes and fobs from one lock to another.
- Delete will remove the lock from your account and clear any settings on the lock. You must be near the lock to do this.



WIRELESS KEY FOB

1. Tap on "Wireless Key Fob"
 2. Tap on "Add Key Fob"
 3. Choose a validity period.
 4. Follow on app instructions to pair the wireless key fob.
 5. Use unlock and lock to interact with the lock.
- Do something similar with "Wireless Key Fob" Follow these steps.

Note:

- A Wireless Key Fob can only connect to one lock.



INTEGRATIONS

- Our locks work with the following software:
-



With more to come shortly.

GATEWAY

- The Gateway bridges any nearby locks to your local wifi allowing for remote control.



With the Gateway connected.

- Receive unlock notifications wherever you are. Remote unlock/lock.
- Check access logs whenever you need them. Generate, edit, or delete custom codes for your guests.
- Access the features of the web portal version of our app for free!
- Check battery level remotely.

FCC

- This device complies with Part 15 of the FCC rules. Operation is subject to the following two conditions: 1) this device may not cause harmful interference, and 2) this device must accept any interference received, including interference that may cause undesired operation.
- **Note:**
- This equipment has been tested and found to comply with the limits for a Class B digital device, under part 15 of the FCC Rules. These limits are designed to provide reasonable protection against harmful interference in a residential installation.
- This equipment generates uses and can radiate radio frequency energy and, if not installed and used by the instructions, may cause harmful interference to radio communications.
- However, there is no guarantee that interference will not occur in a particular installation. If this equipment does cause harmful interference to radio or television reception, which can be determined by turning the equipment off and on, the user is encouraged to try to correct the interference by one or more of the following measures:
 - Reorient or relocate the receiving antenna.
 - Increase the separation between the equipment and the receiver.
 - Connect the equipment into an outlet on a circuit different from that to which the receiver is connected.
 - Consult the dealer or an experienced radio/TV technician for help. Changes or modifications not expressly approved by the party responsible for compliance could void the user's authority to operate the equipment.

FCC Radiation Exposure Statement

- This device complies with FCC RF radiation exposure limits set forth for an uncontrolled environment. This transmitter must not be co-located or operating in conjunction with any other antenna or transmitter.
- This device can operate without distance restriction between the radiator and user's body

FAQs

I entered a code or fingerprint incorrectly too many times and my lock will not accept any new inputs.

Unlock the lock once via the app or wait 5 minutes.

How can I manually lock the lock?

Press and hold # to lock the lock.

The batteries died before I could replace them. What can I do?

Use the provided physical keys to open or plug in a powerbank into the slot on the underside of the keypad to power it up to be able to enter and change the batteries.

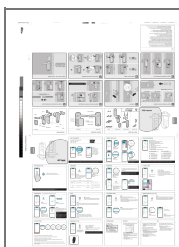
How do I share access of the lock on 2 different phones?

Refer to eKeys or Authorized Admin section on how to do that is.

Not working like it should? Contact us with the following information for quicker resolution.

Which product you do have? Where are you in the setup process? Installing the product. Setting up the app and pairing the product. Already set up app with the product. How long have you had our products for?

Documents / Resources



[BAILUN YACHEN B04 Smart Lock](#) [pdf] User Guide
2BNF9-B04, 2BNF9B04, b04, B04 Smart Lock, B04, Smart Lock, Lock

References

- [User Manual](#)

[Manuals+](#), [Privacy Policy](#)

This website is an independent publication and is neither affiliated with nor endorsed by any of the trademark owners. The "Bluetooth®" word mark and logos are registered trademarks owned by Bluetooth SIG, Inc. The "Wi-Fi®" word mark and logos are registered trademarks owned by the Wi-Fi Alliance. Any use of these marks on this website does not imply any affiliation with or endorsement.