



BAGTAG Fix App User Manual

[Home](#) » [BAGTAG](#) » BAGTAG Fix App User Manual 

Contents

- 1 BAGTAG Fix App
- 2 Registering the BAGTAG Fix
 - 2.1 Check-in & label your bag
- 3 Activate your BAGTAG
 - 3.1 Location on your case
- 4 Attach to the BAGTAG Belt
- 5 Regulatory information
- 6 Documents / Resources
- 7 Related Posts

BAGTAG LOGO

BAGTAG Fix App



Welcome to BAGTAG.

Your device works in combination with the BAGTAG app and with connected airlines. For a list of connected airlines, please check our website.

To activate your BAGTAG, download the BAGTAG mobile application in the Apple App Store or Google Play Store.

Registering the BAGTAG Fix

Step 1: Log in the BAGTAG app

Download the BAGTAG application from the AppStore or Google Play Store to register the BAGTAG device (which you only need to do once). Before you can register the device, you must first sign up or log in.

Step 2: Add the device

After login in, go to the device page (suitcase icon) and select the 'Add device' option. Make sure your location sharing, Internet, and Bluetooth are all turned on.

Step 3: Register with the button

To pair your BAGTAG with your phone, push the device's bottom button once and wait for the e-paper display to display the registration confirmation screen.

The BAGTAG is now ready for its first flight.

Check-in & label your bag

Step 1: Check-in

Check-in your bag through the supported airline app. The luggage label is transferred to the BAGTAG from within the airline's mobile app. This option is available after check-in.

Step 2: Updating the BAGTAG display

Choose your upcoming flight and activate the BAGTAG with the button. Follow the instructions in the airline app to update the BAGTAG display.

The label should be successfully sent to the BAGTAG, and the flight information will appear on the e-paper display. You will also receive a confirmation e-mail that your bag was successfully checked in and labeled.

Please note that this process can differ per airline. Check your airline's website for more information on how to update the tag.

Activate your BAGTAG

Button

The button on your BAGTAG has two functions:

Function

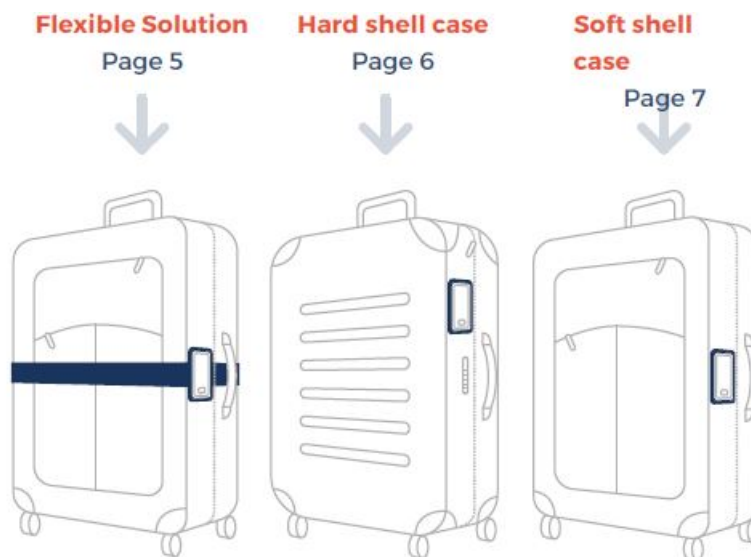
1. Pressing it once activates Bluetooth communication for 15 seconds.
2. Pressing it three times in rapid succession blanks the screen. This means your baggage information is not visible. Pressing it three times again brings back the information.



Location on your case

Attachment location

The BAGTAG should be attached on the narrow, long side of your suitcase as indicated on the image. There are 3 different methods to attach the BAGTAG.

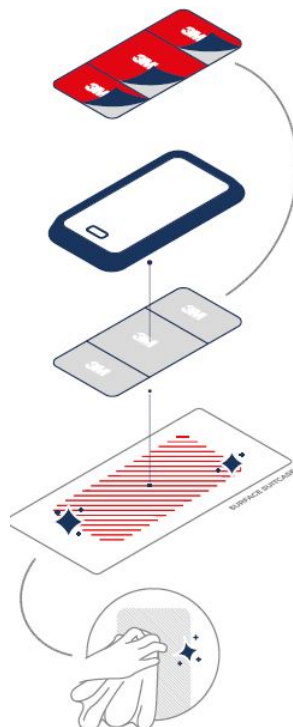


Attach to the BAGTAG Belt



- **Step 1:** Clean the surface of the attachment plate & make sure it's dry.
- **Step 2:** Place one band of your luggage belt in the gap of the attachment plate.
- **Step 3:** Remove the two outermost segments of the 3M adhesive tape.
- **Step 4:** Firmly press the BAGTAG on the attachment plate and belt.
- **Step 5:** Let rest for 12 hours.

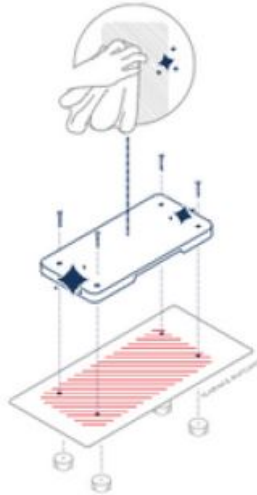
Attach to a hard shell case



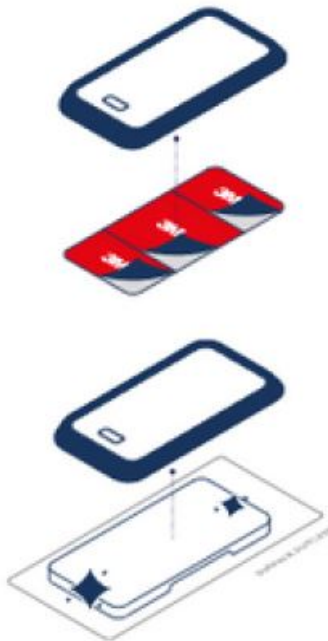
- **Step 1:** Find a clear and flat surface that fits the BAGTAG.

- **Step 2:** Clean the surface of the desired location on your suitcase & make sure it's dry.
- **Step 3:** Remove all three segments of the 3M adhesive tape.
- **Step 4:** Firmly press the BAGTAG on the desired surface.
- **Step 5:** Let rest for 12 hours.

Attach to a soft shell case



- **Step 1:** Put the attachment plate, with the gap facing downwards, on the desired location on your suitcase.
- **Step 2:** Firmly screw the 4 screws through the holes of the plate and your suitcase.
- **Step 3:** Place the screw studs over the sharp ends of the screws on the inside of your suitcase.
- **Step 4:** Clean the attachment plate and make sure it's dry.
- **Step 5:** Remove all three segments of the 3M adhesive tape.
- **Step 6:** Firmly press the BAGTAG on the attachment plate and let it rest for 12 hours.



Regulatory information

COMPLIANCE STATEMENT (PART 15.19)

This device complies with part 15 of the FCC rules. Operation is subject to the following two conditions:

1. This device may not cause harmful interference, and
2. This device must accept any interference received, including interference that may cause undesired operation.

WARNING (PART 15.21)

Changes or modifications not expressly approved by the party responsible for compliance could void the user's authority to operate the equipment.

RF EXPOSURE (OET BULLETIN 65)

To comply with CC RF exposure requirements for mobile transmitting devices, this transmitter should only be used or installed at locations where there is at least 20cm separation distance between the antenna and all persons.

MANUFACTURER PERFORMANCE SPECIFICATION


The BAGTAG device has been certified according to IEC 61000-4-3, the UHF RFID scanning function of the Airport interface of the BAGTAG device could be sensitive to radiated emissions between 600Mhz and 700Mhz resulting in performance criterion B. After the influencer of the emissions in the afore mentioned spectrum have stopped, the BAGTAG device will self-recover its functionality with respect to the UHF RFID scanning function without operator intervention. During normal operating conditions the afore mentioned emissions should not be present in the environment where the BAGTAG is used with the UHF RFID scanning function.

EUROPEAN UNION – DISPOSAL INFORMATION

According to local laws and regulations your product and/or its battery shall be disposed of separately from household waste. When this product reaches its end of life, take it to a collection point designated by local authorities. The separate collection and recycling of your product and/or its battery at the time of disposal will help conserve natural resources and ensure that it is recycled in a manner that protects human health and the environment.

Questions? E-mail us at support@bagtag.com

Documents / Resources

 The image shows the cover of the 'BAGTAG Fix App' user manual. It features the BAGTAG logo at the top, followed by the text 'User Manual BAGTAG Fix'. Below the text is a photograph of a smartphone displaying the app's interface, with several small circular icons floating around it.	<p>BAGTAG Fix App [pdf] User Manual Fix App, Fix, App</p>
--	---