



BAFANG SR SD021.01 Mid Motor Speed Sensor Owner's Manual

[Home](#) » [BAFANG](#) » BAFANG SR SD021.01 Mid Motor Speed Sensor Owner's Manual 



9 DEALER MANUAL FOR
SR SD021.01



DEALER MANUAL FOR SENSOR

Contents

1 INTRODUCTION OF SENSOR

2 SPECIFICATIONS

2.1 Outline and Geometric Size

2.2 Cautions

3 SENSOR INSTALLATION

3.1 Installation Requirements

3.2 Installation Steps

4 Documents / Resources

5 Related Posts

INTRODUCTION OF SENSOR

- **Appearance:**

- ① Speed sensor



- ② Magnet unit



- **Name:** Speed sensor
- **Model:** SR SD021.01
- **Material:** The main body of the speed sensor is PA66 + 30%CF, and the cabling is PVC.



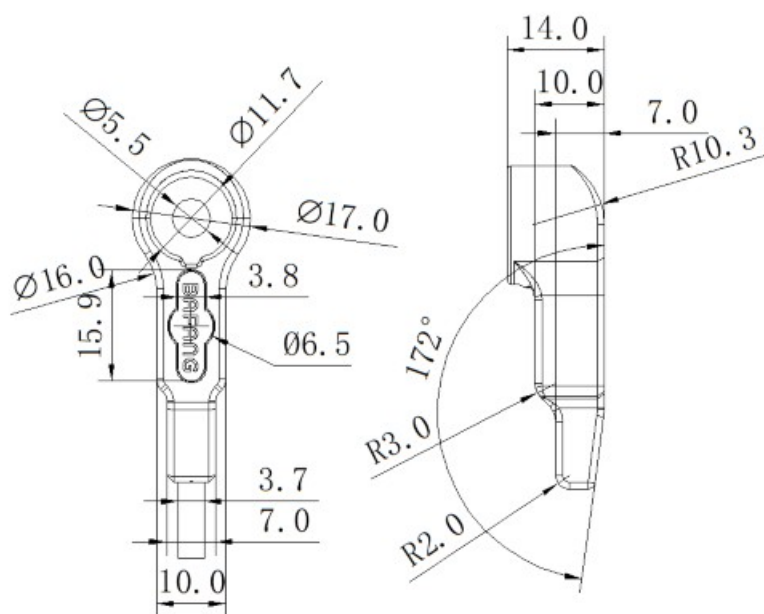
In the e-bike system, the speed sensor is used with the magnet unit to detect wheel's rotation signal. Thus the controller in the system can calculate the riding speed according to the number of turns and the interval time of this signal. Double hall ensures the security of signal detection and meets the safety requirements of EN15194.

SPECIFICATIONS

Model: SR SD021.01

| | |
|-----------------------|-----------|
| Rated Voltage | 5±0.5V |
| Rated Current | <10mA |
| Operating Temperature | -40℃~125℃ |
| Storage Temperature | -50℃~150℃ |
| Storage Humidity | 30%-70% |
| Waterproof | IP65 |

Outline and Geometric Size






Cautions

- The pedelec should be stored in a ventilated dry room. Avoid storing the pedelec near strong magnetic objects.
- Should not be used for a long time overload.
- Should avoid wading to use.

Do not contact magnetic materials with products (mainly axes)

It is forbidden to be knocked during product transportation and installation.

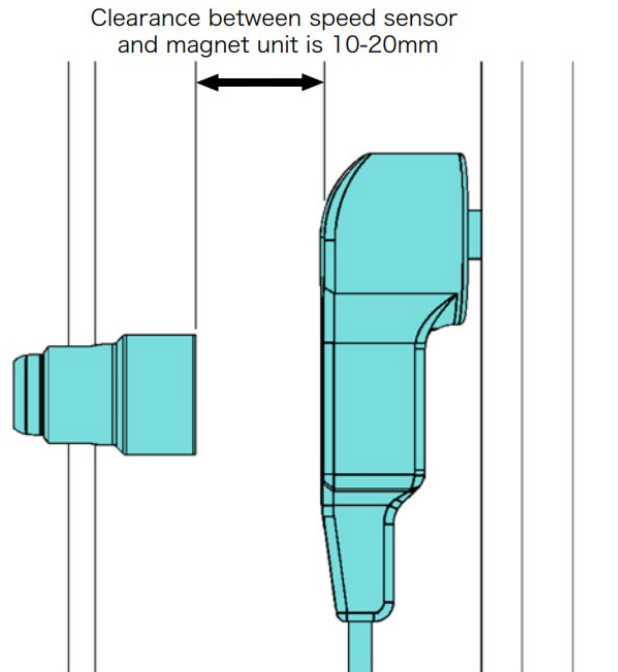
At installation and disassembly it shall be carried out in accordance with the prescribed procedures to prevent break line.

| | |
|---|---|
|  | Do not contact magnetic materials with products (mainly axes) |
|  | It is forbidden to be knocked during product transportation and installation. |
|  | At installation and disassembly it shall be carried out in accordance with the prescribed procedures to prevent break line. |

SENSOR INSTALLATION

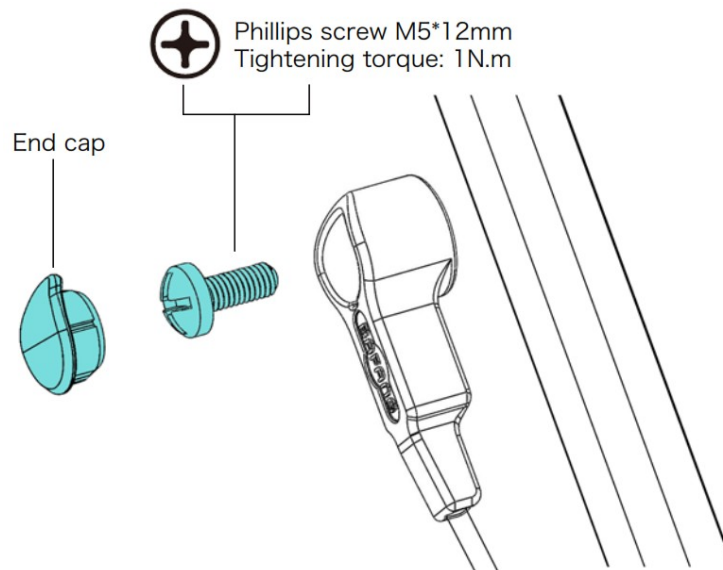
Installation Requirements

1. Make sure that the clearance between the speed sensor and the magnet unit is from 10 to 20 mm.

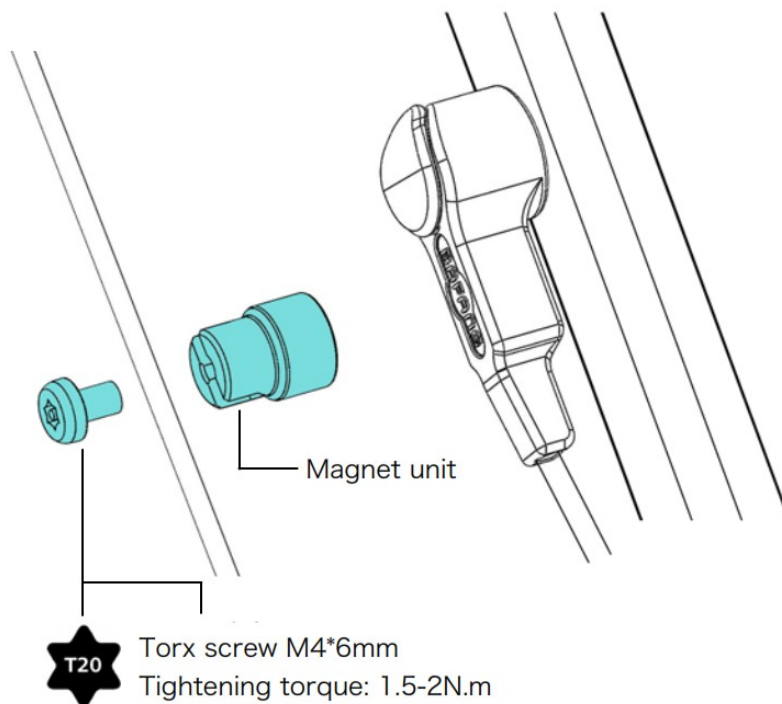


Installation Steps

1. Place the speed sensor on the rear fork, fasten the philips screw M5*12 clockwise at the tightening torque of 1 N.m. Then insert the end cap onto the screw.



2. Place the magnet unit on the spoke, secure it with the torx screw M4*6 at the tightening torque of 1.5-2 N.m.




TECH TIPS

Make sure that the clearance between speed sensor and magnet unit is 10-20mm.

BF-DM-C-SR SD021-EN September 2022

BAFANG®

Documents / Resources

| | |
|---|---|
| <p>9 DEALER MANUAL FOR SR SD021.01</p>  <p>CONTENT</p> <ul style="list-style-type: none"> 1. Introduction 2. Installation 3. Maintenance 4. Troubleshooting 5. Appendix | <p>BAFANG SR SD021.01 Mid Motor Speed Sensor [pdf] Owner's Manual SR SD021.01 Mid Motor Speed Sensor, SR SD021.01, Mid Motor Speed Sensor, Motor Speed Sensor, Speed Sensor, Sensor</p> |
|---|---|