



BADGER Attachment Assembly Addendum Instruction Manual

[Home](#) » [BADGER](#) » BADGER Attachment Assembly Addendum Instruction Manual 



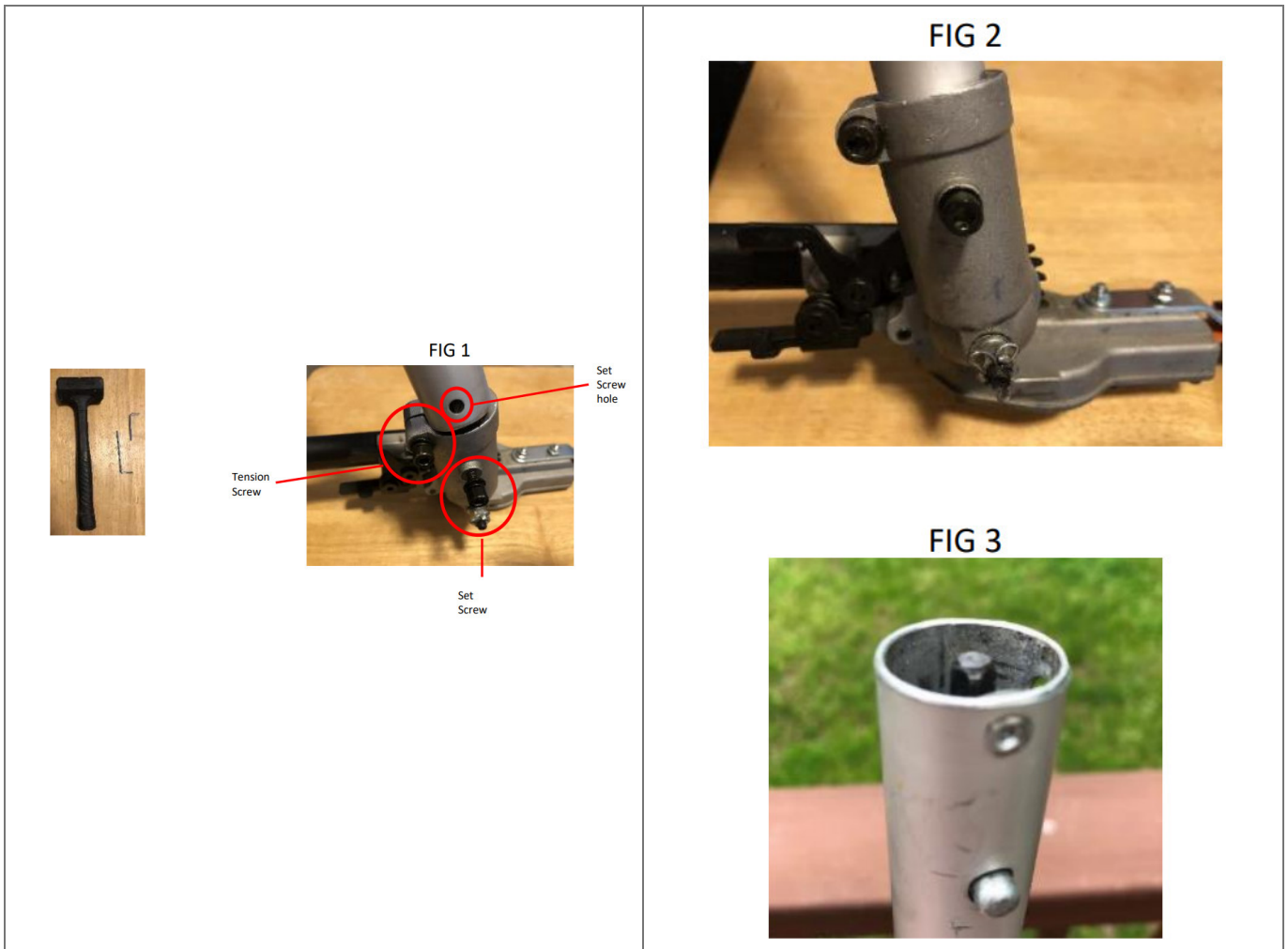
Attachment Assembly Addendum

Contents

- [1 Hedge Trimmer Attachment](#)
- [2 Pole Saw Attachment](#)
- [3 String Trimmer Attachment](#)
- [4 Edger Attachment](#)
- [5 Brush Cutter Blade Install](#)
- [6 Edger Attachment](#)
- [7 Blower Attachment Assembly](#)
- [8 Documents / Resources](#)
- [9 Related Posts](#)

Hedge Trimmer Attachment

Tools: Rubber mallet Allen wrenches included with kit



It is crucial that the attachment tubes are seated all the way into the attachment housings for the drive shafts to register properly.

1. Back the tension and set screws all the way out but do not remove them from the housing
2. Insert tube with set screw hole aligned with set screw
 - (you may need to use the mallet to gently tap the tube all the way in)
3. Spin the set screw in by hand until you feel it contact the tube then rotate the tube as needed to align the hole. Once you have the alignment cinch down the screw being careful to not overtighten. A quarter-turn past bottom will do.
4. Tighten tension screw to a good snug fit.

The final assembly should look like fig 2 and 3

Pole Saw Attachment

Same Process As Hedge Trimmer

FIG 1

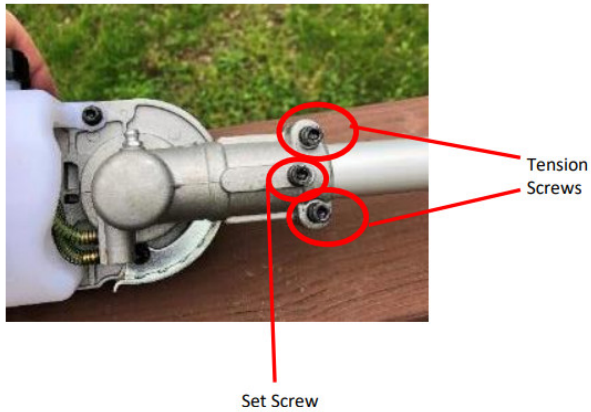


FIG 2



It is crucial that the attachment tubes are seated all the way into the attachment housings for the drive shafts to register properly.

1. Back the tension and set screws all the way out but do not remove from the housing
 2. Insert tube with set screw hole aligned with set screw
 - (you may need to use the mallet to gently tap the tube all the way in)
 3. Spin the set screw in by hand until you feel it contact the tube then rotate the tube as needed to align the hole. Once you have the alignment cinch down the screw being careful to not overtighten. A quarter-turn past the bottom will do.
 4. Tighten tension screws to a good snug fit.
- The final assembly should look like fig 1 and 2

String Trimmer Attachment



This unit is preassembled with the exception of the shield and should be seated correctly.

FIG 1



FIG 2



FIG 3



FIG 4

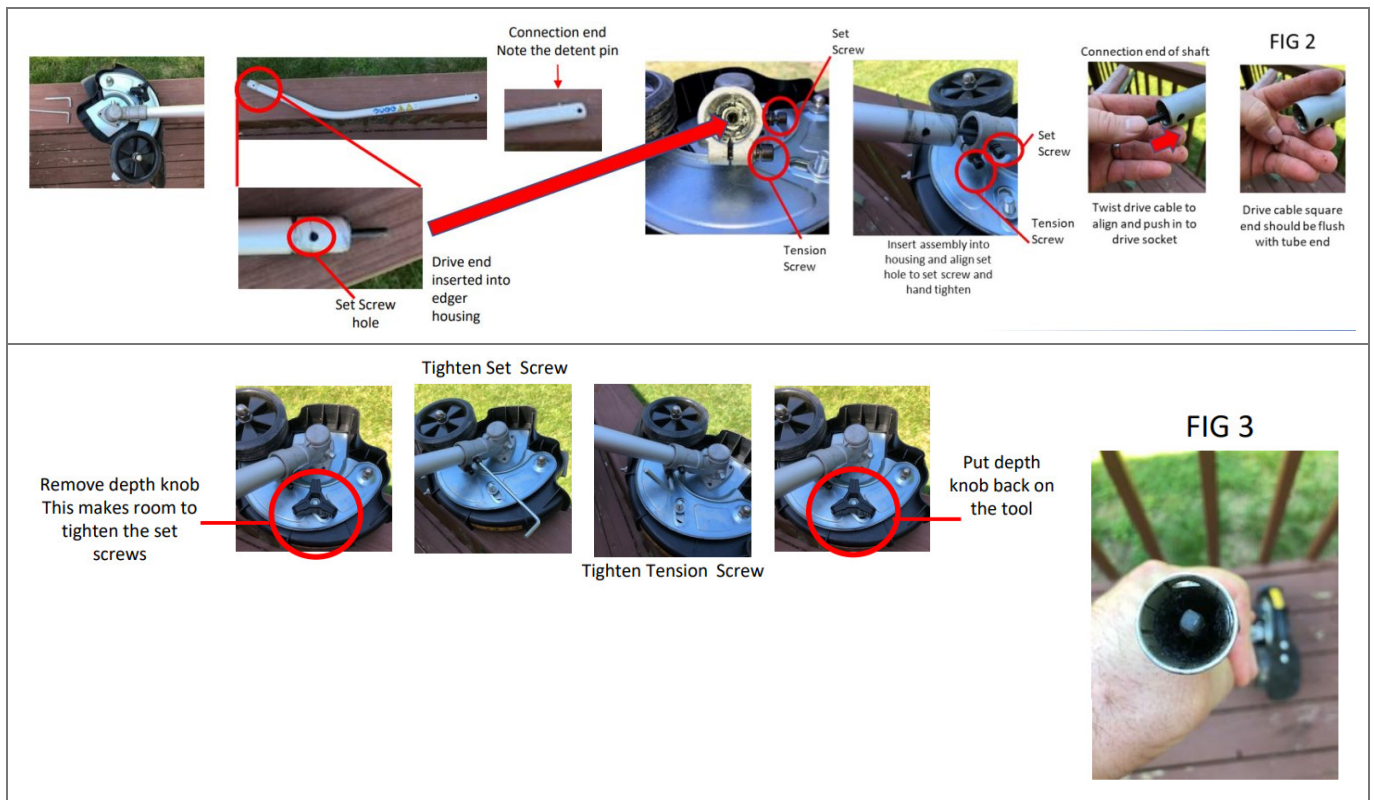


Connection end should look like this

One issue that we commonly see is users inadvertently removing the Spacer Washer on the string trimmer head. This creates a situation where the Tap –N- Go The spool head gets pinched onto the shroud and cannot spin freely. The washer is shown in Fig 1; proper install is shown in Figures 2 through 4. Please note the spark plug wrench is inserted onto the head locking hole in order to properly tighten the Tap –N-Go Head.

Edger Attachment

Tools: Allen wrenches included with kit



It is crucial that the attachment tubes are seated all the way into the attachment housings for the drive shafts to register properly.

Driveshaft square end should be flush with connection tube end.

1. Back the tension and set screws all the way out but do not remove from the housing
2. Insert tube with set screw hole aligned with set screw
3. Spin the set screw in by hand until you feel it contact the tube then rotate the tube as needed to align the hole.
Once you have the alignment cinch down the screw being careful to not overtighten. A quarter-turn past the bottom will do.
4. Tighten tension screw to a good snug fit.
The final assembly should look like fig 2 and 3

Brush Cutter Blade Install

Items needed



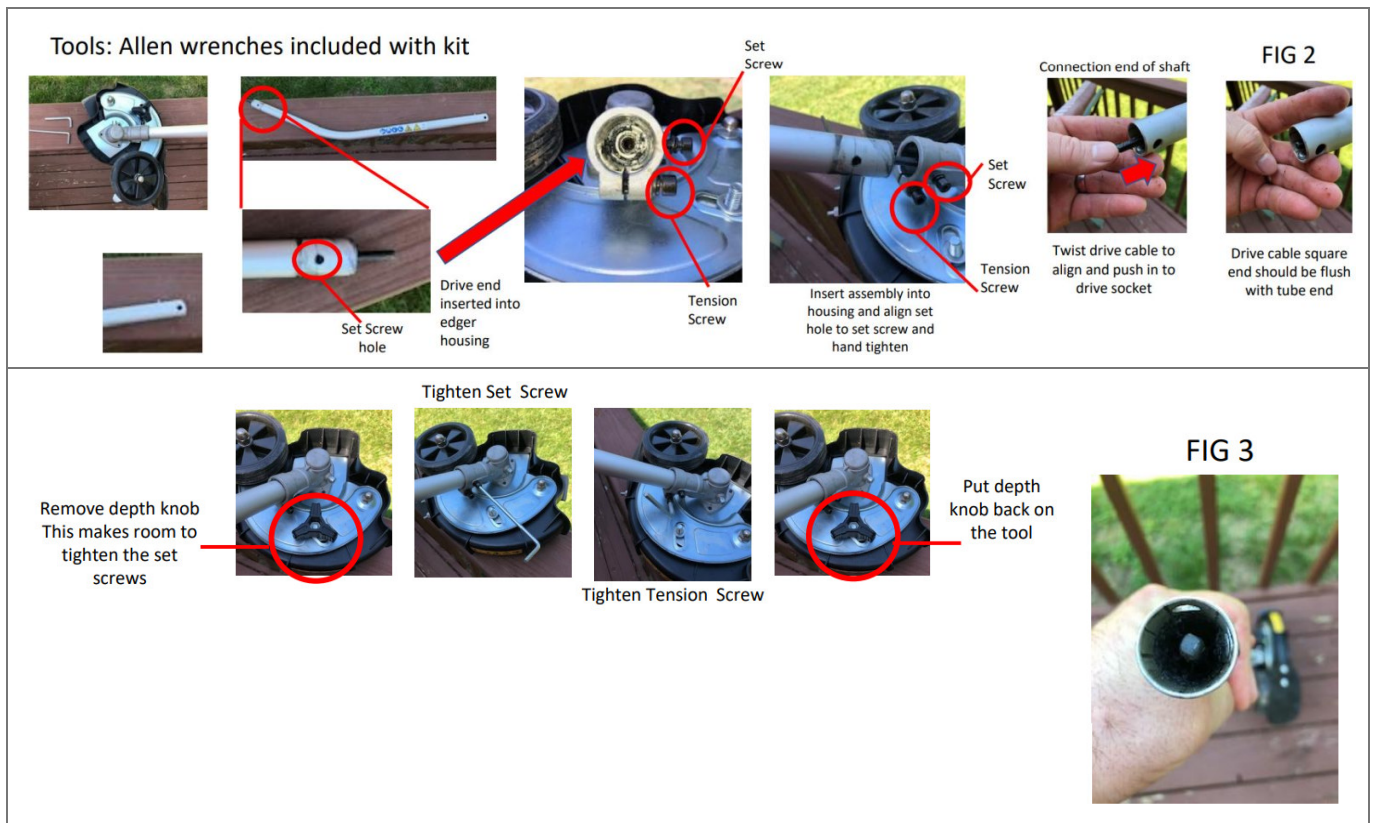
1. Remove String Trimmer Spool
2. Remove clamp washer/spacer
3. Install brush cutter blade (note: the blade is made to spin in either direction)
4. Put on clamp washer
5. Put on nut protector washer
6. Put on nut (note: this is reversely threaded)
7. Put Allen wrench in the arbor lock hole
8. Tighten lock nut down as tight as you can make it. (note: the blade fits onto the thrust washer by setting onto the raised 1" arbor space, you will need to ensure it is aligned or it will not seat correctly.
9. It should look like picture 12 when assembled.



Pic 12

Edger Attachment

Tools: Allen wrenches included with kit



It is crucial that the attachment tubes are seated all the way into the attachment housings for the drive shafts to register properly.

Driveshaft square end should be flush with connection tube end.

1. Back the tension and set screws all the way out but do not remove from the housing
2. Insert tube with set screw hole aligned with set screw
3. Spin the set screw in by hand until you feel it contact the tube then rotate the tube as needed to align the hole. Once you have the alignment cinch down the screw being careful to not overtighten. A quarter-turn past the bottom will do.
4. Tighten tension screw to a good snug fit.

The final assembly should look like fig 2 and 3

Blower Attachment Assembly

Items needed



Housing Bottom

Housing Top



Fan – Top View



Curve Shaft With Lower Connection



Insert Shaft into housing top



Fasten with three screws provided



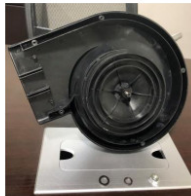
Arbor – Fan mounts here



Washer
Nut
Lock Washer



Mount fan onto arbor with the top (hex pocket) up. Align with hex on arbor. Fan will be flush to top of housing by spin freely.



Should look like this



Put on Washer, lock washer and nut. Use pliers or wrench to tighten nut. Just hold the fan to snug up the nut.



Should look like this



Mount bottom of housing and fasten with the 5 provided screws



Slide nozzle on and fasten with screws provided.

Your blower is ready to use.

Documents / Resources



[BADGER BADGER Attachment Assembly Addendum](#) [pdf] Instruction Manual
BADGER, Attachment, Assembly, Addendum