



Bactiscope EIT Preventative Controls and Detection System User Manual

[Home](#) » [Bactiscope](#) » Bactiscope EIT Preventative Controls and Detection System User Manual 

Contents

- [1 Bactiscope EIT Preventative Controls and Detection System](#)
- [2 Manuals and Guides](#)
- [3 Technical Support](#)
- [4 What's in the box?](#)
- [5 Operating the Bactiscope](#)
- [6 Specifications](#)
- [7 Documents / Resources](#)
 - [7.1 References](#)
- [8 Related Posts](#)



Bactiscope EIT Preventative Controls and Detection System



- This User Manual contains information that is subject to change
- No part of this User Manual may be reproduced or transmitted in any form, electronic or mechanical, including but not limited to photocopying, recording, information retrieval systems, or computer network without the written permission of EIT International.
- Bactiscope and all other EIT International product names are trademarks or registered trademarks of Easytesters Ltd. t/a EIT International.
- The Bactiscope product may be protected by one or more patents.

Manuals and Guides

To reduce our use of paper and to conform to our environmental/sustainability policies and responsibility, we have moved our product documentation online. For the latest Bactiscope User Manual or Product Guide, please go to www.eit-international.com/products/#scope

Technical Support

E-Mail: support@eit-international.com or speak to your regional in-country EIT International approved associate.

Web Site: Visit our web site at www.eit-international.com/support where you can browse our FAQ's, or request assistance.

www.eit-international.com

What's in the box?

Fundamentally, the Bactiscope™ is a miniature camera, or probe, on a flexible cable (in cable lengths of 1m, 2m or 5m) housed in its own carry case which also holds the video screen. The Bactiscope™ has a single camera

head with an external diameter of 37mm, that can be maneuvered into awkward areas such as pipework or behind hard-to-reach areas, that then transmits a video feed that allows you to see a close-up, real-time view of inspection areas using its unique wave alternating UV system.

Operating the Bactiscope

1. To turn on screen press the power button on the monitor for 0.5sec
2. To turn on the camera press the camera button, there will also be a blue and red light on the lefthand side of the device which will turn on.
3. Press the Light button to activate the Bactiscan Light
4. In order to record videos press the Rec button on the monitor for 0.5sec, this will cause the blue light to flash indicating the recording has started

1. LED Status

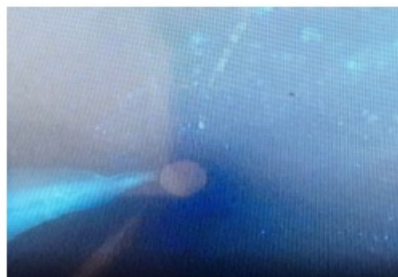
1. Red LED Constantly on — Power status light
2. Blue LED is Constantly on In standby mode
3. Blue LED Blink slowly (1 time per second) — In recording mode
4. Blue LED Blink quickly (2 times per second) — Micro SD is full or failed to be recognized

2. Format SD Card

1. In standby mode, long press the Rec button for 5 seconds, the SD card will be formatted and recording will start.
5. To stop recording press the Rec button again for 0.5sec, the blue light will then stay on.
6. To turn the camera off press the camera button, the monitor will no longer show an image
7. To turn the light off press the Light button

Please note

- Recording files will be saved automatically in segments lasting 5 minutes and recording stops when Micro SD card is full.
- It takes about 2G capacity for 1 hour recording. Thus an 8G Micro SD card can record about 3.5 hours.
- Ensure you stop recording before power off. Otherwise, you will miss your last recording



Watch recordings

1. Remove the SD card from the unit
2. Place SD card in computer
3. Open files and view recordings
4. Place SD card back in unit

Specifications

Specifications	
Power on	1 hour 30 mins
Charge time	6 hours 30 mins
Warranty	1 year
UV light type	UV-A
UV bulb life	6,000 hours
IP rating	IP65
Battery	7.4V6.6AhLi-ion
Impact resistance	1.5 metres
Dimensions	123 x 274 x 248 (mm)
Carry case dimensions	357 x 470 x 176 (mm)
Weight	1.5KG
Video capture	Yes

- EIT International
- Biopharma House
- Winnall Valley Road
- Winnall
- Winchester
- United Kingdom
- SO23 0LD

For service and support e-mail us at support@eit-international.com
www.eit-international.com

EIT International

Documents / Resources



[Bactiscope EIT Preventative Controls and Detection System](#) [pdf] User Manual
EIT Preventative Controls and Detection System, Reliable Portable Bacteria and Biofilm
Detection System, EIT Preventative Controls System, EIT Preventative Detection System

References

- [International.com](#)
- [EIT International | Suppliers Of Preventative Controls And Detection Systems](#)
- [EIT Products Page - EIT International](#)
- [EIT After Sales Support & Product Training | EIT International](#)

Manuals+.