

BACKNETS Thermostatic Shower System with Tub Spout and Handheld



BACKNETS Thermostatic Shower System with Tub Spout and Handheld Instruction Manual

[Home](#) » [Backnets](#) » BACKNETS Thermostatic Shower System with Tub Spout and Handheld Instruction Manual



Contents

- [1 BACKNETS Thermostatic Shower System with Tub Spout and Handheld](#)
- [2 DIAGRAM AND PARTS LIST](#)
- [3 RECOMMENDED TOOLS](#)
- [4 INSTALLATION STEPS](#)
- [5 Pipeline chematic](#)
- [6 Documents / Resources](#)
 - [6.1 References](#)
- [7 Related Posts](#)

BACKNETS

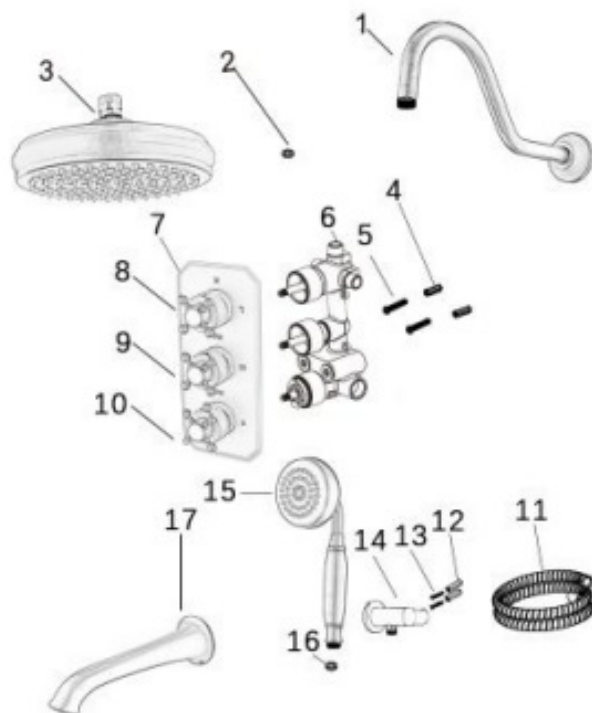
BACKNETS Thermostatic Shower System with Tub Spout and Handheld



Thermostatic valve

- Brass material, strong and durable Retro styling

DIAGRAM AND PARTS LIST



1. Shower arm
2. Gasket
3. Showerhead

4. Setscrew
5. Tapping screws
6. Valve Body
7. Panels
8. 3-function control handle
9. Flow control switch
10. Cold and hot water control switch (with constant temperature lock)
11. Flexible hose
12. Secure the screws
13. Tapping screws
14. Shower holder
15. Showerhead
16. Spacers
17. Bathtub outlet

THERMOSTATIC MIXING VALVE



RECOMMENDED TOOLS

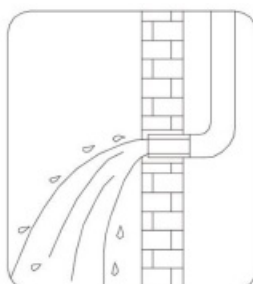


Allen key Philips Screwdriver Electric drill Adjustable wrench Pipe tape Eye protection Flashlight

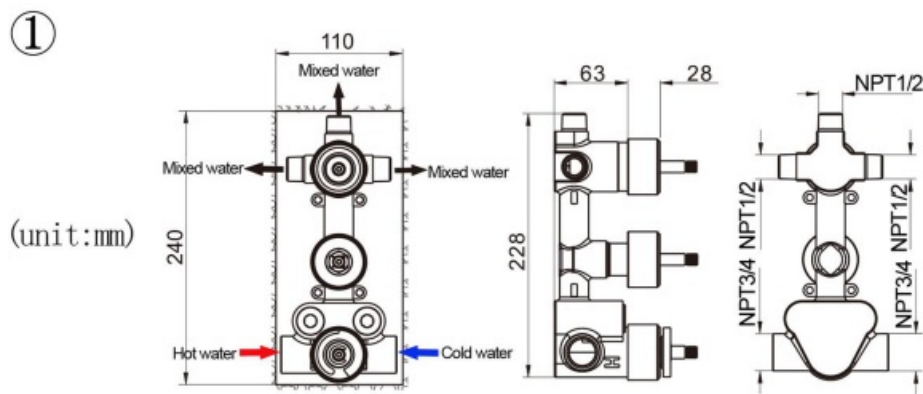
INSTALLATION STEPS

PRECAUTIONS FOR INSTALLATION

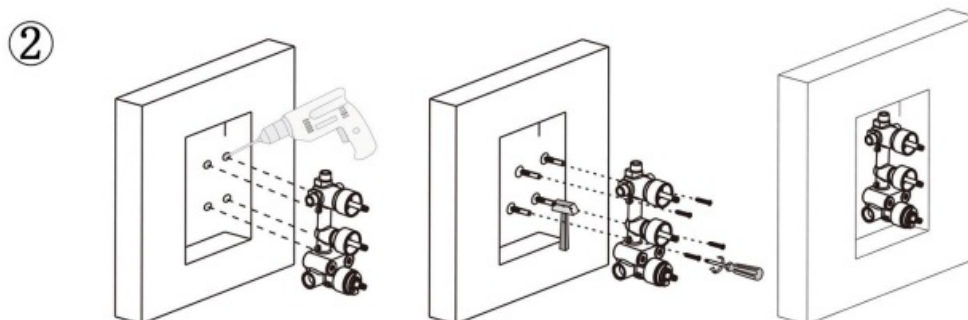
- **Water pressure:** 0.05MPa~0.5MPa
- The water supply line must be “hot water on the left, cold water on the right”
- Before installation, water must be released to flush the pipe sediment to prevent sediment blockage affecting normal use.
- After pipe connections are complete, a leakproof test must be conducted to check that all connections are properly installed.



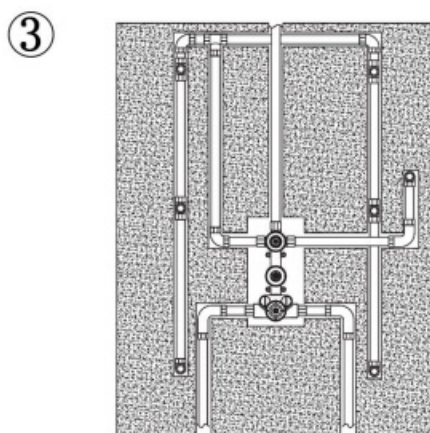
1. Slot on the wall according to the size of the valve body. The recommended length is 240mm, width is 110mm and depth is 70-85mm.



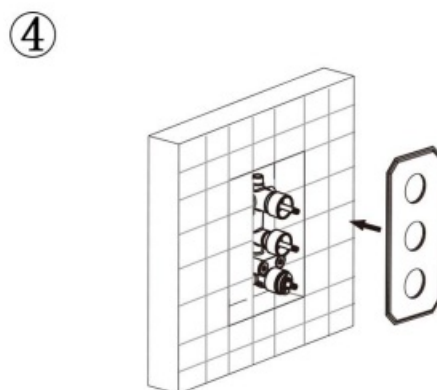
2. Drill 4 fixed holes in the wall according to the product size, Hammer the expanded screw in the 4 drilled holes, Position the valve body on the 4 screws,use a phillips screwdriver to tighten the 4 self-tapping screws, fix the valve body on the wall.



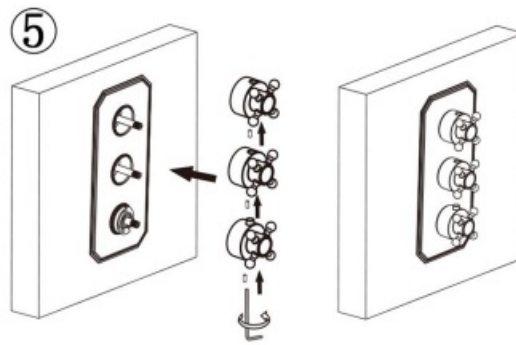
3. Connect all the pipes to check leakage, and confirm no leak occurs when turning on the water.



4. Cover with decorative panels.

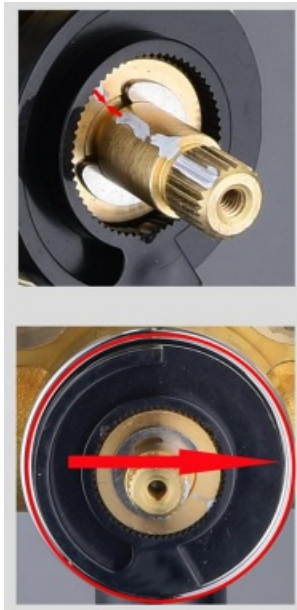


5. Install the handwheel in the direction shown in the picture above and lock it with hexagon screws.



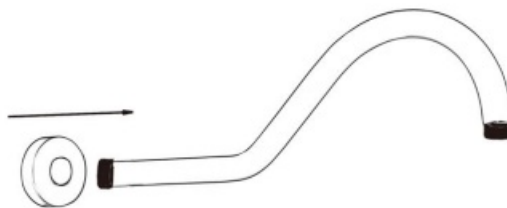
PRECAUTIONS FOR INSTALLATION

1. Align the marks on the temperature valve stem.
2. Sleeve the plastic ring onto the valve stem with the "C" shape opening facing the right.

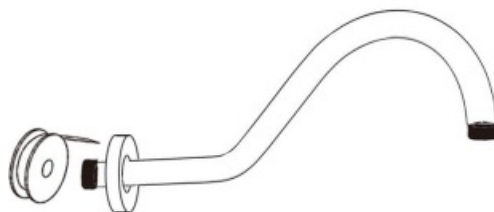


Install shower arm and overhead shower

1. Set the decorative cup on the shower arm.



2. Roll the Teflon tape on the thread.



3. Tighten the shower arm Then it is the overhead shower on the shower arm.

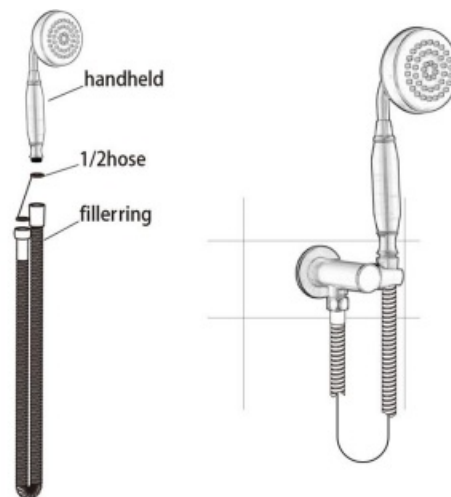


Install shower seat

1. Roll the Teflon tape on the thread of the shower seat.

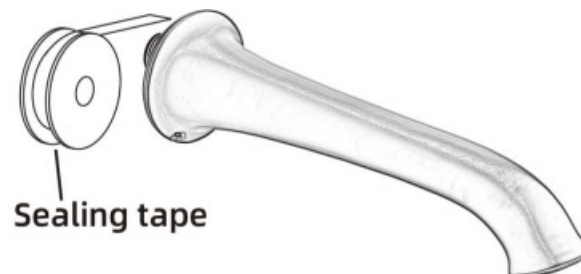


2. Tighten the shower seat clockwise on the outlet hole of the outlet socket.
3. Connect the shower, tube, and shower seat, and finally insert the shower seat.

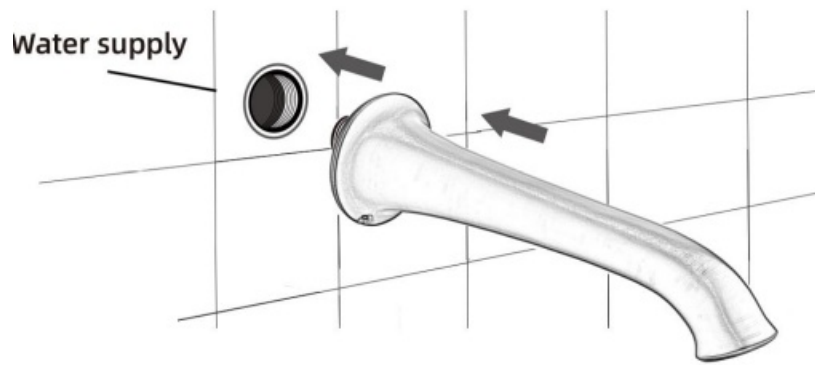


Install faucet

1. Wrap the sealing tape around the screw.



2. Connect to water supply hole.



3. Installation is complete.



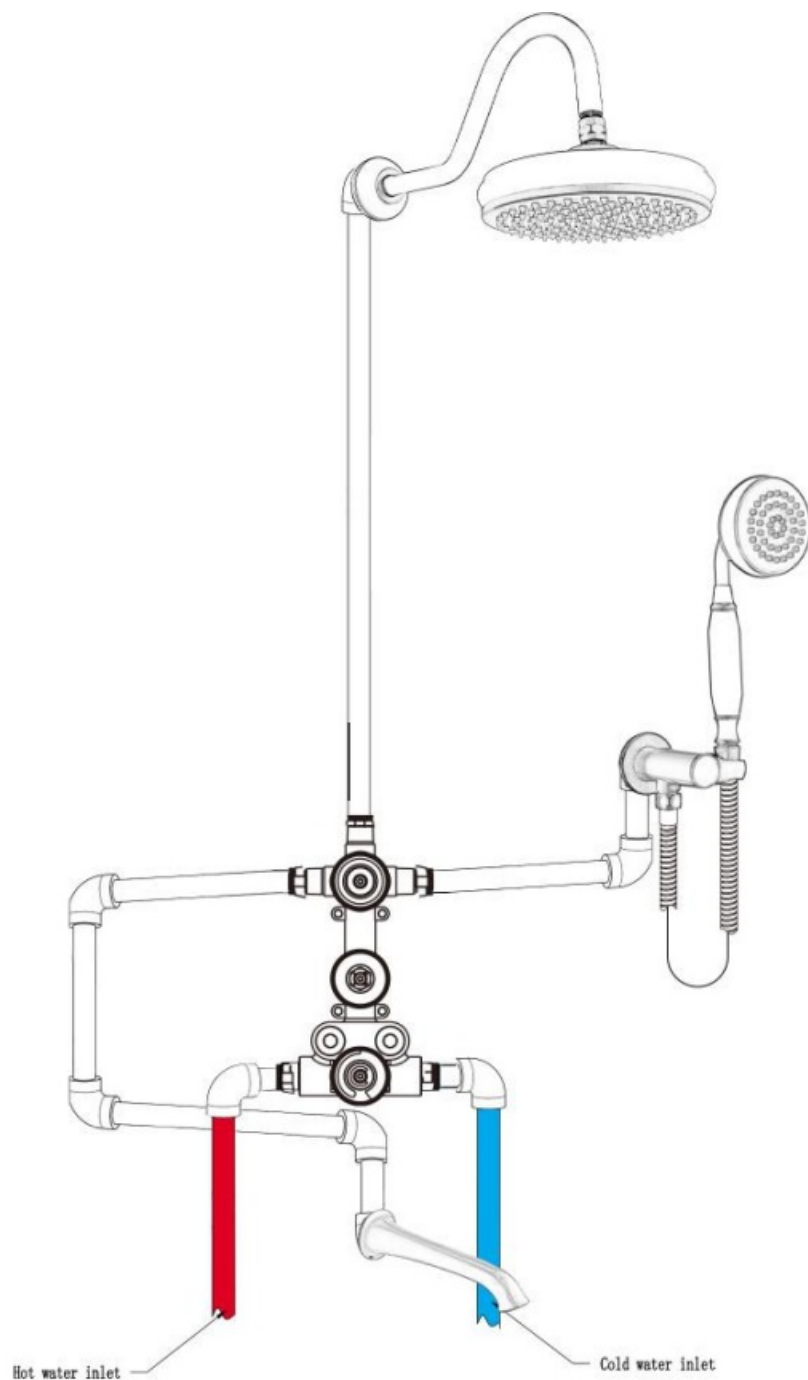
Pipeline chematic

BACKNETS warrants to the original consumer purchaser that you will get a free replacement for defects in material and workmanship within the warranty period;

- For commercial purchasers, the warranty period is two (2) years for Backnets products from the date of purchase. For homeowner purchasers, five (5) years from the date of purchase;
- This warranty is non-transferable.

This warranty does not cover Backntes products purchased from unauthorized sellers.

Email address: Backnets@126.com.



- Please do not hesitate to contact us with your questions, concerns, and/or problems, we're here to help.
- Email address: Backnets@126.com

Documents / Resources



[BACKNETS Thermostatic Shower System with Tub Spout and Handheld](#) [pdf] Instruction Manual

Thermostatic Shower System with Tub Spout and Handheld, Thermostatic, Shower System with Tub Spout and Handheld, System with Tub Spout and Handheld, Tub Spout and Handheld, Spout and Handheld, Handheld

References

- [User Manual](#)

[Manuals+](#), [Privacy Policy](#)

This website is an independent publication and is neither affiliated with nor endorsed by any of the trademark owners. The "Bluetooth®" word mark and logos are registered trademarks owned by Bluetooth SIG, Inc. The "Wi-Fi®" word mark and logos are registered trademarks owned by the Wi-Fi Alliance. Any use of these marks on this website does not imply any affiliation with or endorsement.