



BACHMANN ZG2 Monitor Arm Instruction Manual

[Home](#) » [BACHMANN](#) » BACHMANN ZG2 Monitor Arm Instruction Manual 

Contents

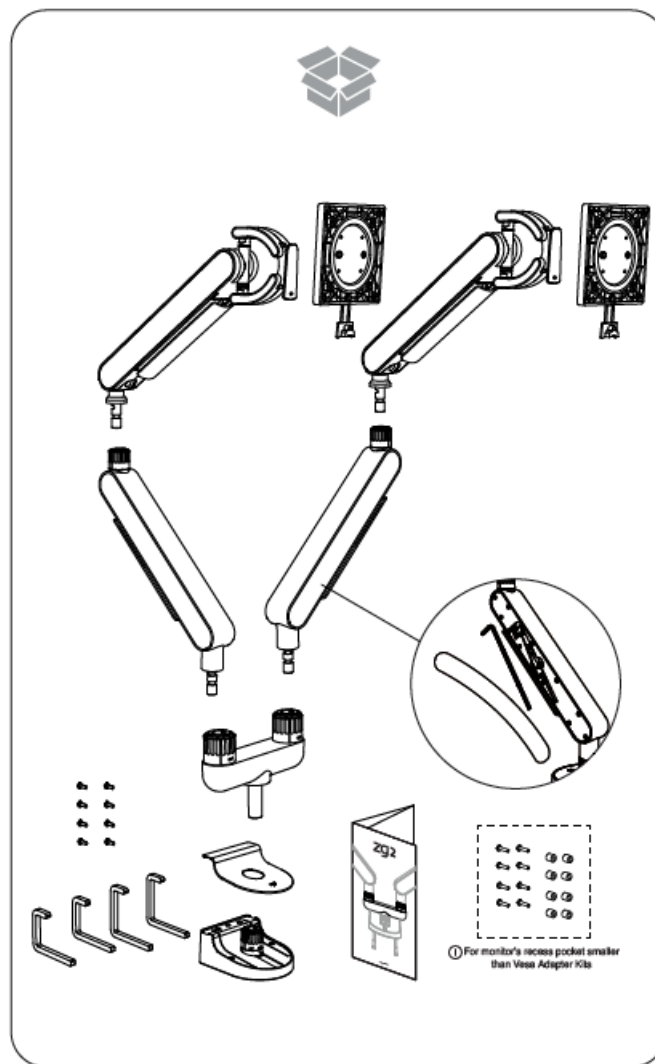
- [1 BACHMANN ZG2 Monitor Arm](#)
- [2 WHATS IN THE BOX](#)
- [3 HOW TO USE](#)
- [4 INSTALLATION INSTRUCTIONS](#)
- [5 Documents / Resources](#)
- [6 Related Posts](#)

BACH MANN

BACHMANN ZG2 Monitor Arm



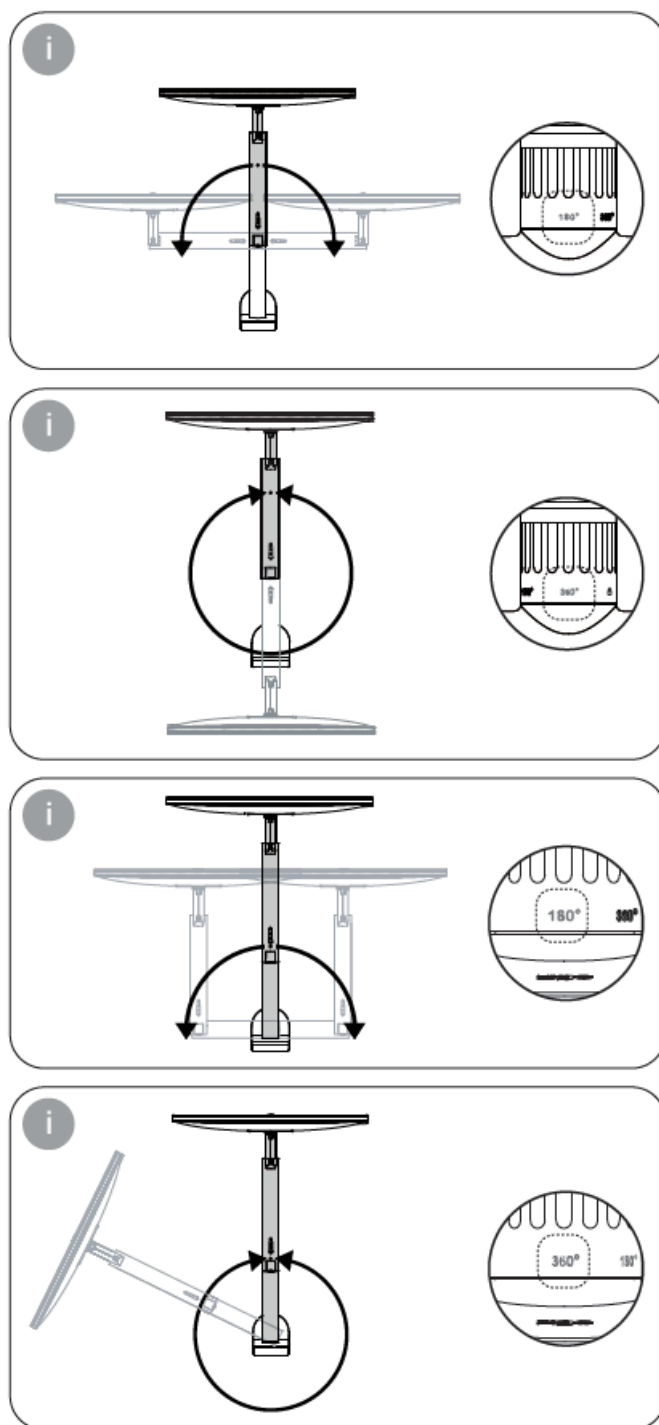
WHATS IN THE BOX



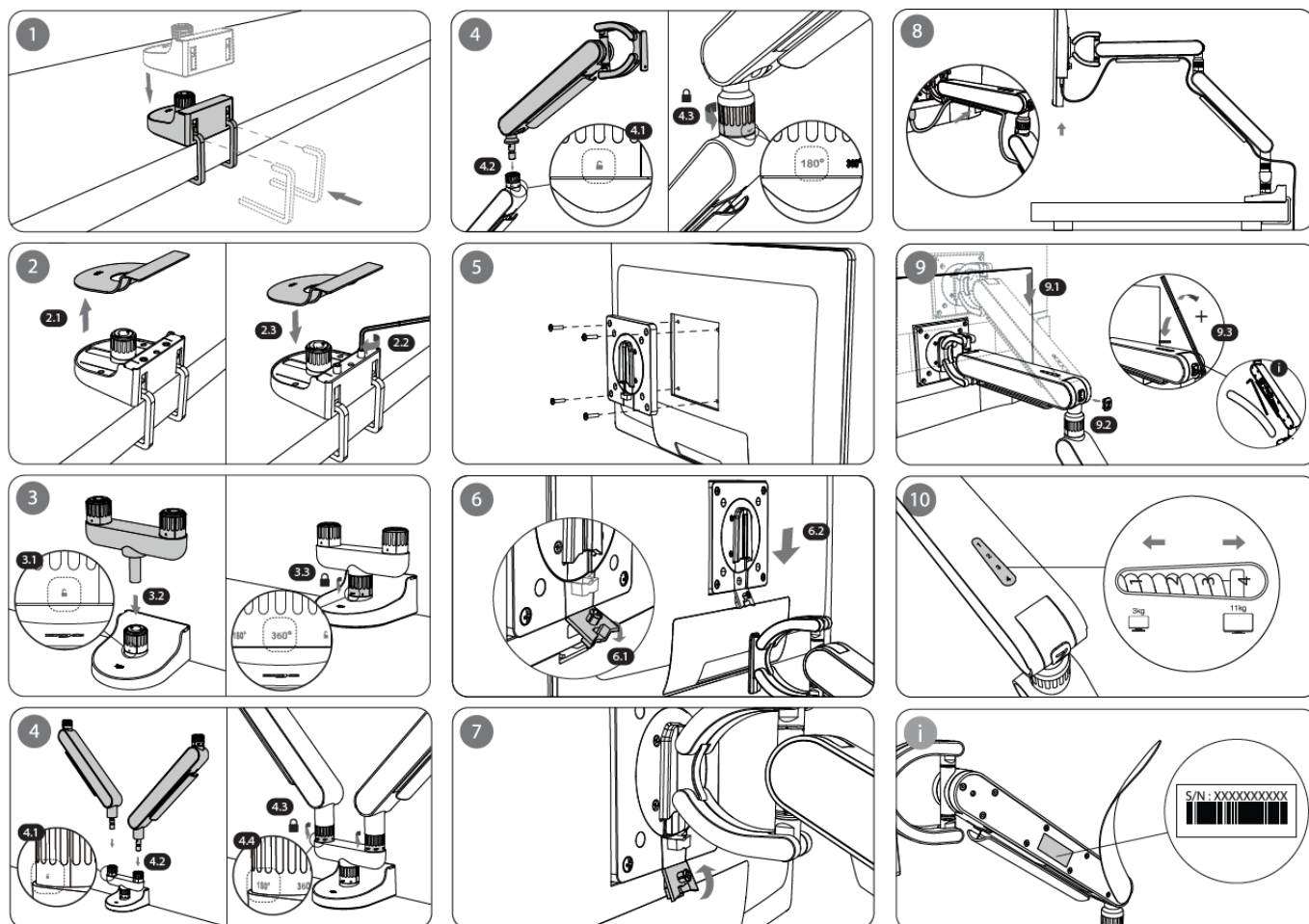
WARNING! Stored Energy Hazard:

The arm mechanism is under tension and will move up rapidly, on its own, as soon as attached equipment is removed. For this reason, **DO NOT** remove equipment unless the arm has been moved to the highest position! Failure to follow this instruction may result in serious personal injury and/or equipment damage!

HOW TO USE



INSTALLATION INSTRUCTIONS



www.bachmann.com

Documents / Resources

	<p>BACHMANN ZG2 Monitor Arm [pdf] Instruction Manual ZG2 Monitor Arm, ZG2, Monitor Arm, Arm</p>
--	---